

# NEXT NX-XSDOCK Side Dock Charging Station Owner's Manual



## Contents

- [1 QUICK SETUP GUIDE](#)
- [2 SIDE DOCK CHARGING STATION FOR XBOX® SERIES S](#)
  - [2.1 NX-XSDOCK](#)
  - [2.2 PACKAGE CONTENTS](#)
  - [2.3 FEATURES](#)
  - [2.4 SAFETY INFORMATION/CAUTION](#)
  - [2.5 SETTING UP THE SIDE DOCK CHARGING STATION](#)
  - [2.6 REMOVING THE SIDE DOCK CHARGING STATION](#)
  - [2.7 INSTALLING THE RECHARGEABLE BATTERY PACK](#)
  - [2.8 SPECIFICATIONS](#)
  - [2.9 TROUBLESHOOTING](#)
  - [2.10 LEGAL NOTICES](#)
    - [2.10.1 FCC Information](#)
  - [2.11 ONE-YEAR LIMITED WARRANTY](#)
- [3 Documents / Resources](#)
  - [3.1 References](#)
- [4 Related Posts](#)

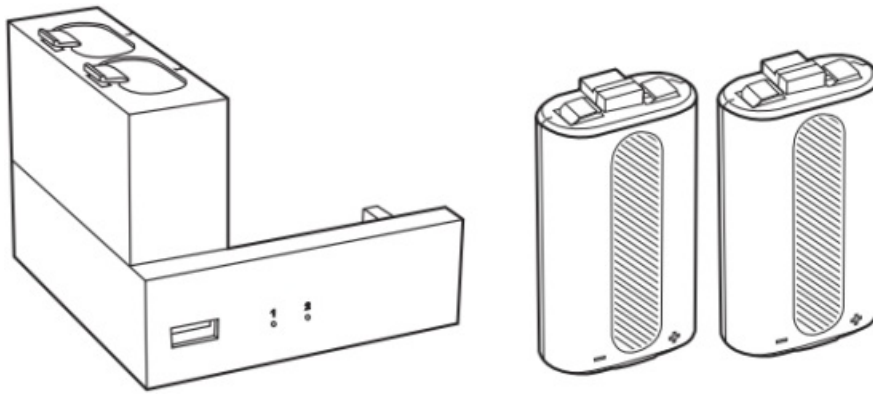
## QUICK SETUP GUIDE

## SIDE DOCK CHARGING STATION FOR XBOX® SERIES S

NX-XSDOCK

### PACKAGE CONTENTS

- Side Dock Charging Station for Xbox Series S
- Rechargeable Battery Packs (2)



Before using your new product, please read these instructions to prevent any damage.

## FEATURES

- Works with Xbox Series S console only
- Charge two battery packs simultaneously
- Dual LED Charge indicators
- USB pass-thru with data and power support
- Fully UL certified battery cell

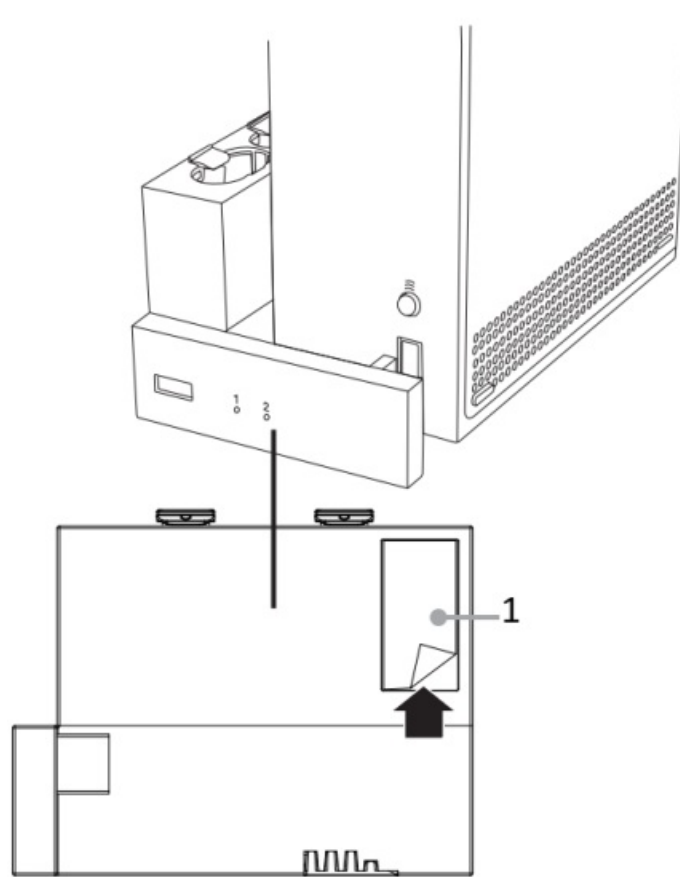
## SAFETY INFORMATION/CAUTION

Incorrect battery use may result in battery leakage, overheating, or explosion. When using batteries, make sure that you follow these instructions:

- Keep batteries out of the reach of children.
- Do not heat, open, puncture, mutilate, or dispose of batteries in fire.
- If a battery leaks, remove the battery, taking care to keep the leaked fluid from touching your skin or clothes. If fluid from the battery comes into contact with skin or clothes, flush skin with water or remove the clothing immediately. Before inserting a new battery, thoroughly clean the controller with a damp paper towel.
- Do not allow metal objects to touch the battery terminals, because they can become hot and cause burns. For example, do not carry the battery in a pocket with keys or coins.
- Remove the battery when the product will not be used for an extended period of time.

## SETTING UP THE SIDE DOCK CHARGING STATION

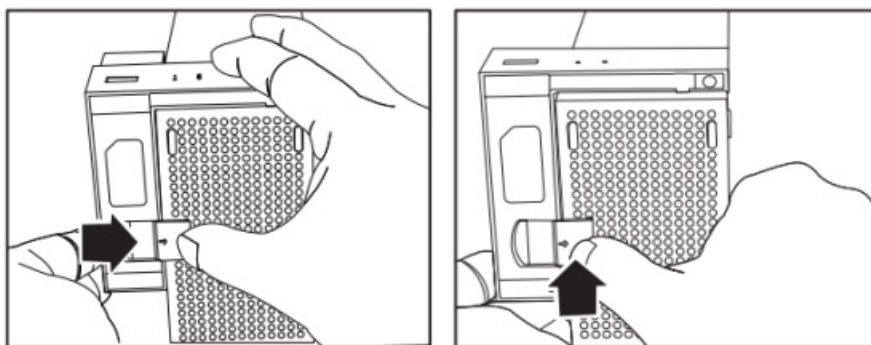
- 1 Plug the Side Dock Charging Station into the USB port on the front of the Xbox Series S.



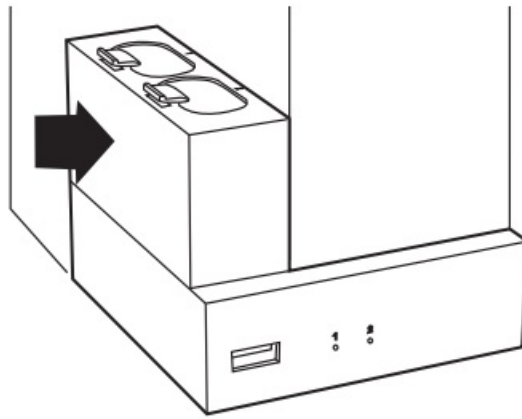
# 1. \* Mounting Pad

\* Peel off the film that is on top of the mounting pad that will help to secure the Side Dock Charging Station to the Xbox Series S.

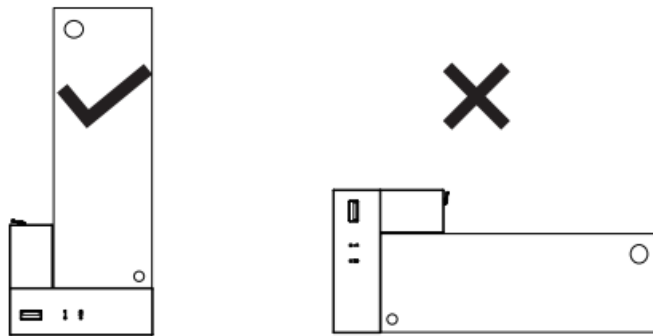
**3** Carefully place the Xbox Series S console on it's side. Slide the locking switch on the Side Dock Charging Station to fasten it to the bottom of the console.



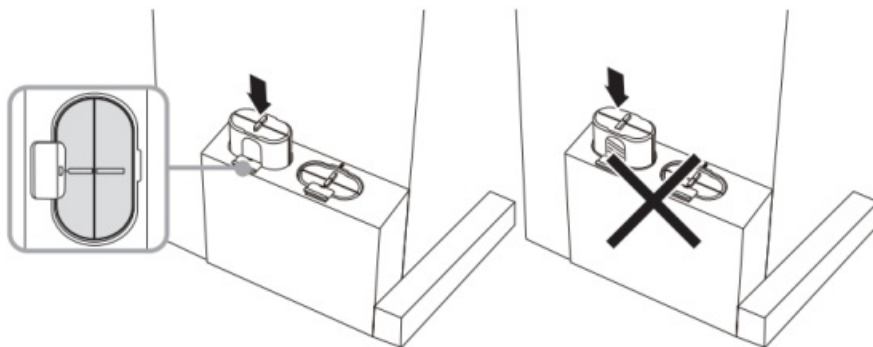
**4** Gently press the Side Dock Charging Station against the Xbox Series S to assure there is solid contact between the mounting pad and the console.



Note: For use with Xbox Series S in vertical position.

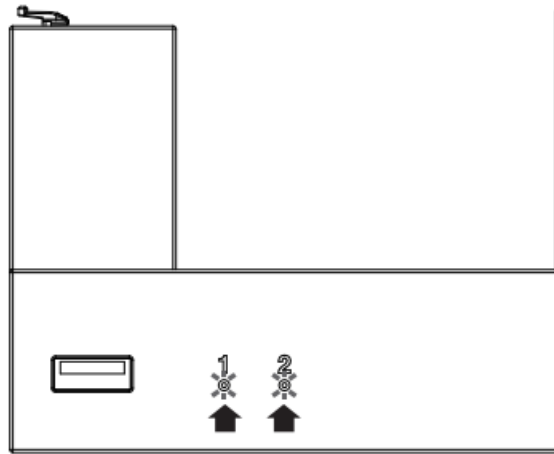


**5** Orient the battery packs so that the diagonal stripes are facing the locking tabs with the metal contacts facing towards the inside of the Side Dock Charge station. Carefully slide the battery packs into the charge station until they lock in place.

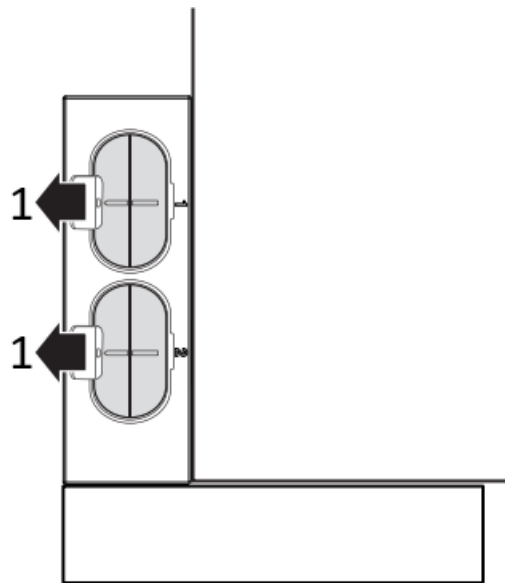


- Status light information:

STATUS LIGHT	DESCRIPTION
Amber	Charging
Green	Charging Complete



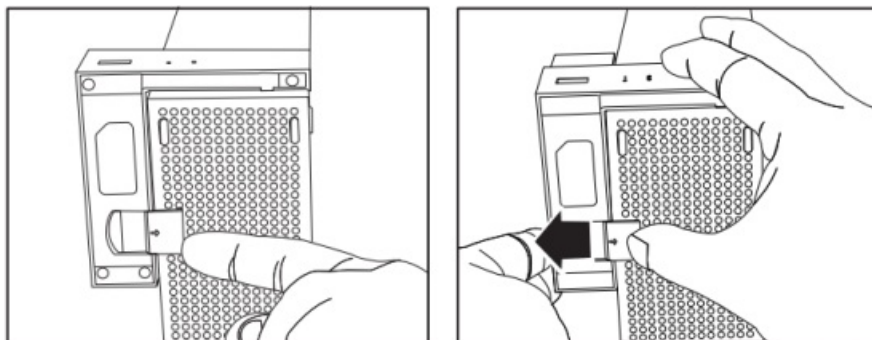
**6** When the battery pack is fully charged, slide the locking Unlock switch up to unlock. The battery automatically pops out.



1. Unlock

#### REMOVING THE SIDE DOCK CHARGING STATION

- 1** Slide the locking switch into the unlocked position.
- 2** Hold on to the console, then pull the charging station back to remove it.

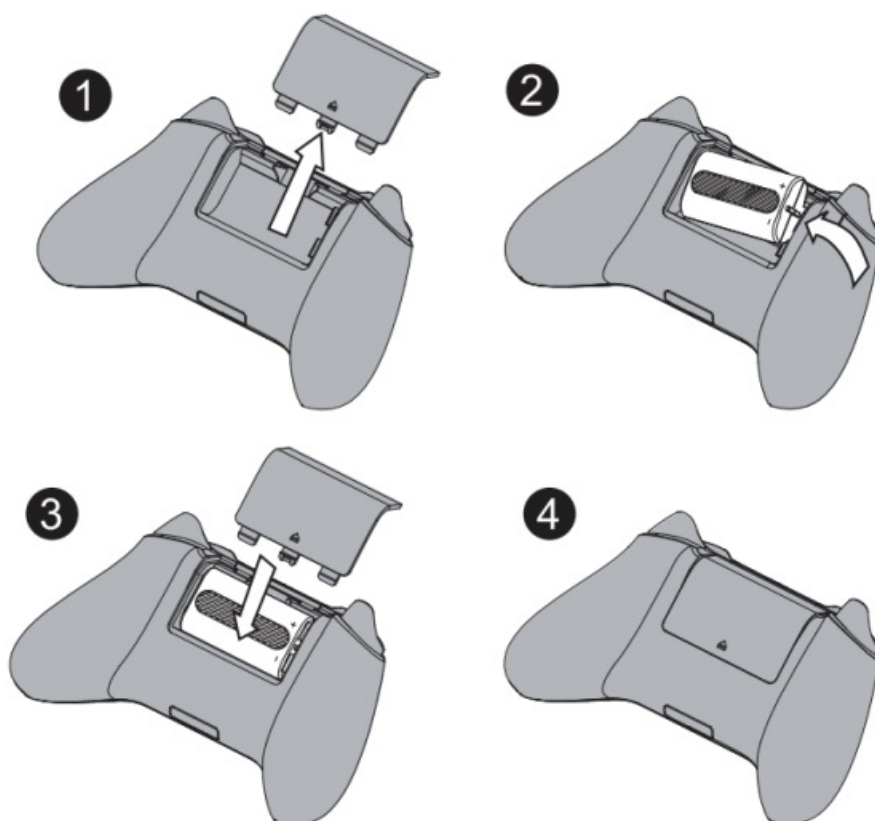


**Note:** The charging station is designed to stay connected to your Xbox Series S console. We recommend that you leave it connected.

#### INSTALLING THE RECHARGEABLE BATTERY PACK

1 Open the battery cover and insert the rechargeable battery pack into the battery compartment as shown below. The contacts should be facing left and the diagonal stripes should be facing outward. Replace the battery cover.

**Warning:** If you find that the battery is requiring force or does not fit correctly, do not force the battery in. Carefully reevaluate the position of the battery and try again – the battery should not be forced into the controller!



## SPECIFICATIONS

External dimensions: charging station (W×H×D)	Approx.3.6× 1.6× 3.1in. (9.2 ×4.1 × 7.9cm)
Battery capacity	1200mAh
Battery type	Ni-MH LSD battery
External dimensions: battery (W×H×D)	Approx. 2.13×1.18 × .59 in. (5.4 × 3 ×1.5 cm)
Operating temperature	32°F~104°F(0°C~40°C)

## TROUBLESHOOTING

### The side dock charging station doesn't charge?

- Confirm the charging station is properly connected to the Xbox Series S.
- Confirm that the battery is fully inserted in the correct orientation is locked in place.
- Confirm the battery pack is properly installed on the Xbox Series X controller.

## LEGAL NOTICES

### FCC Information

This device complies with part 15 of the FCC Rules. Operation is subject to the following two conditions: (1) This device may not cause harmful interference, and (2) this device must accept any interference received, including interference that may cause undesired operation.

**Warning:** Changes or modifications to this unit not expressly approved by the party responsible for compliance

could void the user's authority to operate the equipment.

**Note:** This equipment has been tested and found to comply with the limits for a Class B digital device, pursuant to Part 15 of the FCC Rules. These limits are designed to provide reasonable protection against harmful interference in a residential installation. This equipment generates, uses and can radiate radio frequency energy and, if not installed and used in accordance with the instructions, may cause harmful interference to radio communications. However, there is no guarantee that interference will not occur in a particular installation. If this equipment does cause harmful interference to radio or television reception, which can be determined by turning the equipment off and on, the user is encouraged to try to correct the interference by one or more of the following measures:

- Reorient or relocate the receiving antenna.
- Increase the separation between the equipment and receiver.
- Connect the equipment into an outlet on a circuit different from that to which the receiver is connected.
- Consult the dealer or an experienced radio/TV technician for help.

**ICES-003 Statement**

This Class B digital apparatus complies with Canadian ICES-3(B) / NMB-3(B) standard.

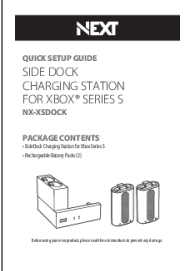
**ONE-YEAR LIMITED WARRANTY**

Visit [www.next-accessories.com](http://www.next-accessories.com) for details.

This product is not approved, endorsed or affiliated with Microsoft.  
©2024. All Rights Reserved.  
Made in China

English V1-24-0819

**Documents / Resources**

	<p><a href="#">NEXT NX-XSDOCK Side Dock Charging Station</a> [pdf] Owner's Manual</p> <p>NX-XSDOCK Side Dock Charging Station, NX-XSDOCK, Side Dock Charging Station, Dock Charging Station, Charging Station, Station</p>
-------------------------------------------------------------------------------------	----------------------------------------------------------------------------------------------------------------------------------------------------------------------------------------------------------------------------

**References**

- [NEXT-HOME](#)
- [User Manual](#)

[Manuals+](#), [Privacy Policy](#)

This website is an independent publication and is neither affiliated with nor endorsed by any of the trademark owners. The "Bluetooth®" word mark and logos are registered trademarks owned by Bluetooth SIG, Inc. The "Wi-Fi®" word mark and logos are registered trademarks owned by the Wi-Fi Alliance. Any use of these marks on this website does not imply any affiliation with or endorsement.