

NEXT
NX-XBX9PC
Play Plus
Charge Kit



NEXT NX-XBX9PC Play Plus Charge Kit User Guide

[Home](#) » [NEXT](#) » NEXT NX-XBX9PC Play Plus Charge Kit User Guide 

Contents

- [1 NEXT NX-XBX9PC Play Plus Charge Kit](#)
- [2 Product Usage Instructions](#)
- [3 FAQs](#)
- [4 PACKAGE CONTENTS](#)
- [5 FEATURES](#)
- [6 SAFETY INFORMATION](#)
- [7 SETTING UP YOUR PLAY AND CHARGE KIT](#)
- [8 SPECIFICATIONS](#)
- [9 TROUBLESHOOTING](#)
- [10 FCC](#)
- [11 WARRANTY](#)
- [12 Documents / Resources](#)
 - [12.1 References](#)
- [13 Related Posts](#)



NEXT NX-XBX9PC Play Plus Charge Kit



Product Usage Instructions

Setting Up Your Play and Charge Kit

1. Open the battery cover on your Xbox Series X or S controller and insert the rechargeable battery pack into the battery compartment as shown below. The contacts should be facing left and the diagonal stripes should be facing outward. Replace the battery cover.
 - **Warning:** If you find that the battery requires force or does not fit correctly, do not force the battery in. Carefully reevaluate the position of the battery and try again- the battery should not be forced into the controller!
2. Plug the USB Charge Cable (USB Type C plug) into the Xbox Series X | S controller.
3. Plug the USB Charge Cable (USB Type A plug) into one of the open USB ports on your Xbox console.
 - **Note:** You can also charge your battery by connecting the controller and charge cable to any compatible USB Type A power source.

Troubleshooting

If the rechargeable battery pack isn't charging, follow these

steps:

- Confirm the battery pack is properly installed on the Xbox Series X | S controller.
- Please only use the included rechargeable battery pack or replacement rechargeable battery pack, other regular rechargeable batteries do not recharge in the controller.
- Confirm the controller is connected to a powered USB port, and the charge cable is attached securely at both ends. If charging via the USB port from Xbox Series X | S console, please make sure to turn the power ON before charging.
- The Play + Charge Kit uses a standard USB-A to USB-C cable. You can use any standard USB-A to USB-C cable to test whether the cable is the problem.

FAQs

- **Q: How do I know if my battery pack is properly installed?**

- A: Ensure that the contacts of the battery pack are facing left and the diagonal stripes are facing outward when inserted into the battery compartment of the controller.

- **Q: Can I use regular rechargeable batteries with this kit?**

- A: No, please only use the included rechargeable battery pack or a replacement rechargeable battery pack recommended for use with this controller.

- **Q: What should I do if the battery pack isn't charging?**

- A: Refer to the troubleshooting section in the user manual to check for common issues and follow the recommended steps for resolving charging problems.

PACKAGE CONTENTS

- Rechargeable battery pack
- USB charge cable (9 feet)

FEATURES

- Rechargeable battery eliminates disposable batteries
- 1200mAh pack lets you longer between charges
- 100% compatible with standard Xbox Series X | S controllers
- Fully UL-certified battery cell

SAFETY INFORMATION

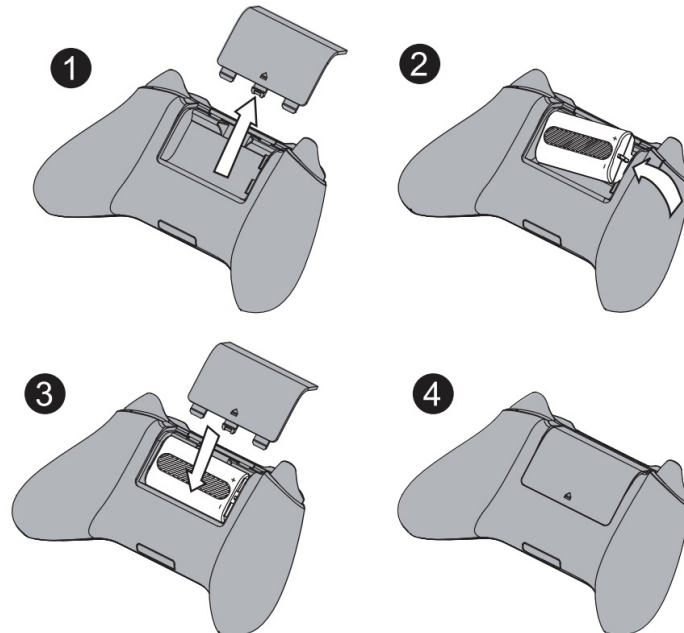
CAUTION

- Incorrect battery use may result in battery leakage, overheating, or explosion. When using batteries, make sure that you follow these instructions:
- Keep batteries out of the reach of children.
- Do not heat, open, puncture, mutilate, or dispose of batteries in a fire.
- If a battery leaks, remove the battery, taking care to keep the leaked fluid from touching your skin or clothes. If fluid from the battery comes into contact with skin or clothes, flush the skin with water or remove the clothing immediately. Before inserting a new battery, thoroughly clean the controller with a damp paper towel.
- Do not allow metal objects to touch the battery terminals, because they can become hot and cause burns. For example, do not carry the battery in a pocket with keys or coins.
- Remove the battery when the product will not be used for an extended period of time.

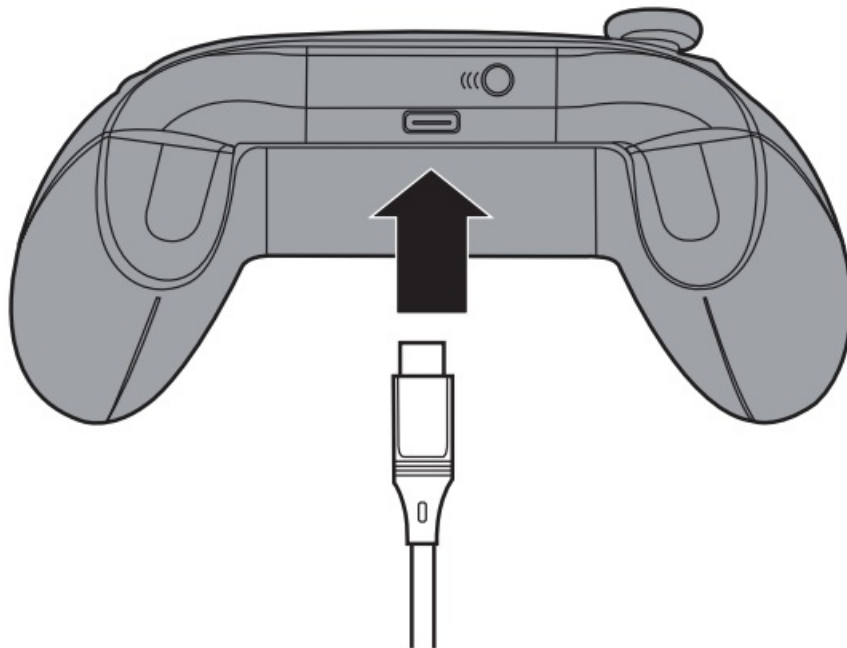
SETTING UP YOUR PLAY AND CHARGE KIT

1. Open the battery cover on your Xbox Series X or S controller and insert the rechargeable battery pack into the battery compartment as shown below. The contacts should be facing left and the diagonal stripes should be facing outward. Replace the battery cover.
 - **Warning:** If you find that the battery requires force or does not fit correctly, do not force the battery in. Carefully reevaluate the position of the battery and try again – the battery should not be forced into the

controller!

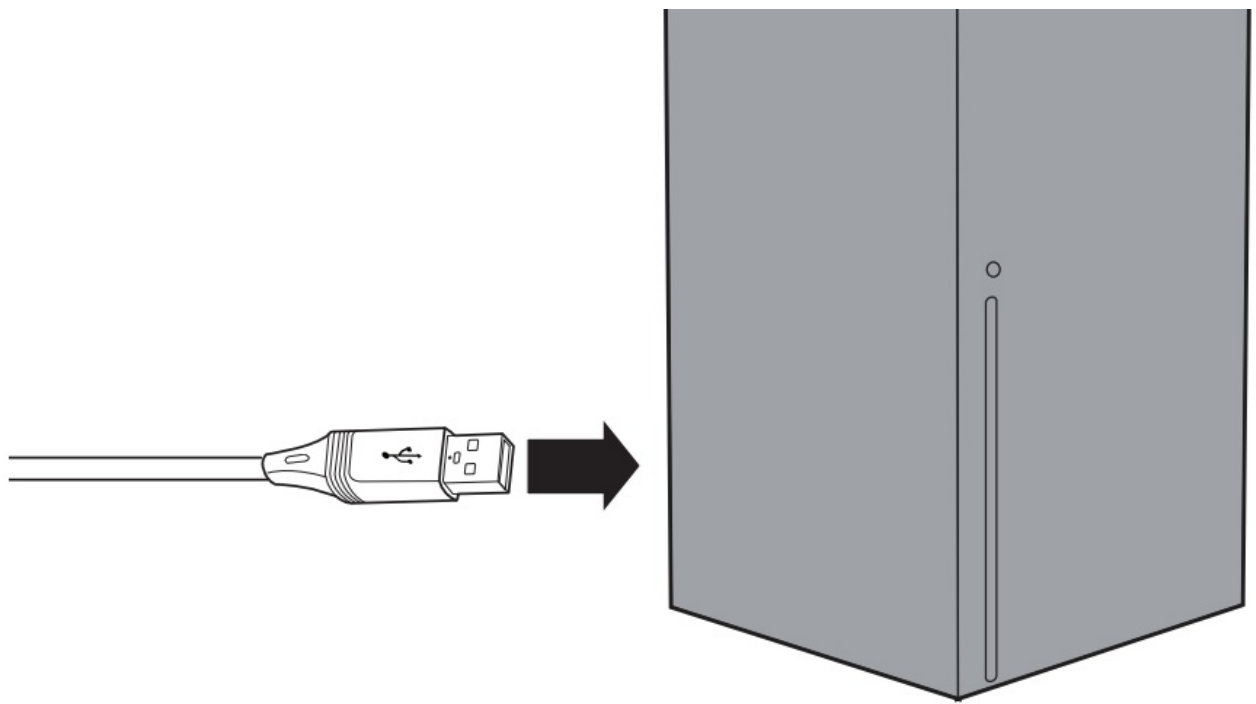


2. Plug the USB Charge Cable (USB Type C plug) into the Xbox Series X | S controller.



3. Plug the USB Charge Cable (USB Type A plug) into one of the open USB ports on your Xbox console.

- **Note:** You can also charge your battery by connecting the controller and charge cable to any compatible USB Type A power source.



SPECIFICATIONS

- **Cable length** 9 ft
- **Battery capacity** 1200mAh
- **Battery type** Ni-MH LSD battery
- **External dimensions (W×H×D)** Approx. 1.96×1.18× .59 in. (5 × 3 × 1.5 cm)
- **Operating temperature** 32°F~104°F(0°C~40°C)

TROUBLESHOOTING

The rechargeable battery pack isn't charging?

- Confirm the battery pack is properly installed on the Xbox Series X | S controller.
- Please only use the included rechargeable battery pack or replacement rechargeable battery pack, other regular rechargeable batteries do not recharge in the controller.
- Confirm the controller is connected to a powered USB port, and the charge cable is attached securely at both ends, if charging via the USB port from the Xbox Series X S console, please make sure to turn the power ON before charging.
- The Play + Charge Kit uses a standard USB-A to USB-C cable, You can use any standard USB-A to USB-C cable to test whether the cable is the problem.

FCC

FCC Information

This device complies with part 15 of the FCC Rules. Operation is subject to the following two conditions: (1) This device may not cause harmful interference, and (2) this device must accept any interference received, including interference that may cause undesired operation.

Warning: Changes or modifications to this unit not expressly approved by the party responsible for compliance could void the user's authority to operate the equipment.

Note: This equipment has been tested and found to comply with the limits for a Class B digital device, pursuant to Part 15 of the FCC Rules. These limits are designed to provide reasonable protection against harmful interference in a residential installation. This equipment generates, uses, and can radiate radio frequency energy and, if not installed and used in accordance with the instructions, may cause harmful interference to radio communications. However, there is no guarantee that interference will not occur in a particular installation. If this equipment does cause harmful interference to radio or television reception, which can be determined by turning the equipment off and on, the user is encouraged to try to correct the interference by one or more of the following measures:

- Reorient or relocate the receiving antenna.
- Increase the separation between the equipment and the receiver.
- Connect the equipment to an outlet on a circuit different from that to which the receiver is connected.
- Consult the dealer or an experienced radio/TV technician for help.

ICES-003 Statement

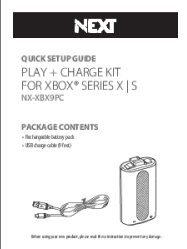
This Class B digital apparatus complies with the Canadian ICES-3(B) / NMB-3(B) standard.

WARRANTY

ONE-YEAR LIMITED WARRANTY

Visit www.next-accessories.com for details

Documents / Resources

	<p>NEXT NX-XBX9PC Play Plus Charge Kit [pdf] User Guide</p> <p>NX-XBX9PC, NX-XBX9PC Play Plus Charge Kit, NX-XBX9PC, Play Plus Charge Kit, Plus Charge Kit, Charge Kit, Kit</p>
---	---

References

- [NEXT-HOME](#)
- [User Manual](#)

[Manuals+](#), [Privacy Policy](#)

This website is an independent publication and is neither affiliated with nor endorsed by any of the trademark owners. The "Bluetooth®" word mark and logos are registered trademarks owned by Bluetooth SIG, Inc. The "Wi-Fi®" word mark and logos are registered trademarks owned by the Wi-Fi Alliance. Any use of these marks on this website does not imply any affiliation with or endorsement.