



Next METERS NR4 Next Universal and Fully Programmable Register User Guide

[Home](#) » [NEXT METERS](#) » Next METERS NR4 Next Universal and Fully Programmable Register User Guide 

Next METERS NR4 Next Universal and Fully Programmable Register



Contents

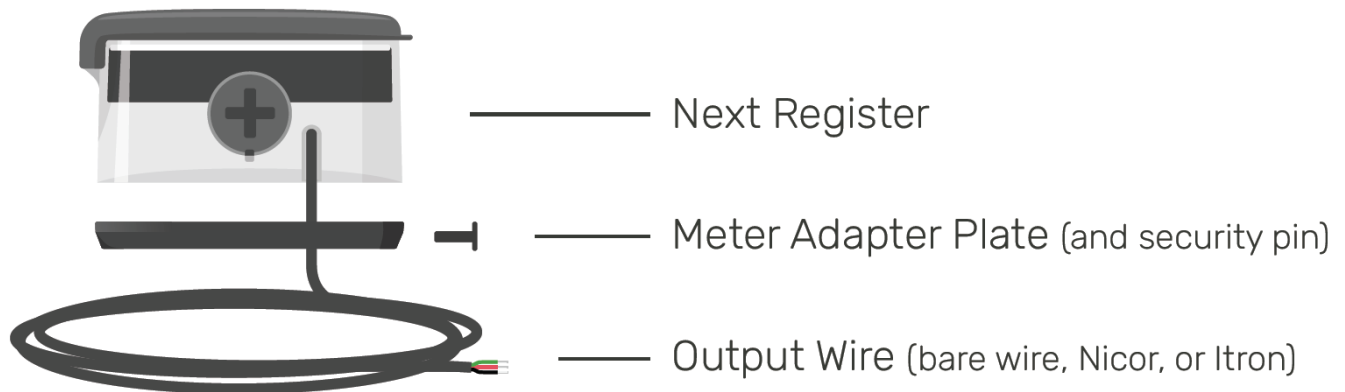
- [1 INTRODUCTION](#)
- [2 Installation Components](#)
- [3 Accuracy Boost Technology](#)
- [4 Additional Resources](#)
- [5 In Field Installation](#)
- [6 Configure](#)
- [7 Configuration Options](#)
- [8 Wiring](#)
- [9 Splice Connection](#)
- [10 Mobile App Download](#)
- [11 Documents / Resources](#)
 - [11.1 References](#)

INTRODUCTION

Welcome to your new solid state smart register! The Next Register is a universal and fully programmable register that can be retrofitted on most water meters.

Installing your Next Register is quick and easy, and our intuitive mobile app will guide you through your configuration options. Enjoy the benefits of smarter and more accurate meters throughout your utility deployment.

Installation Components



Accuracy Boost Technology

Through precisely reading the magnetic signature within your mechanical meter, the Next Register converts a traditional system into a smart, plug-n play solution without the need to replace your meter.

The Next Meters **Accuracy Boost Technology** will increase your meter's accuracy by adaptively measuring the current flow velocity and applying an enhanced measurement profile specific to your meter model.

Additional Resources



For full installation guide, spec sheets, and additional resources, please visit:

products.nextmeters.com/nr4 Contact Information

Phone: 844.538.8203

Email: support@nextmeters.com

In Field Installation

Remove Old Register

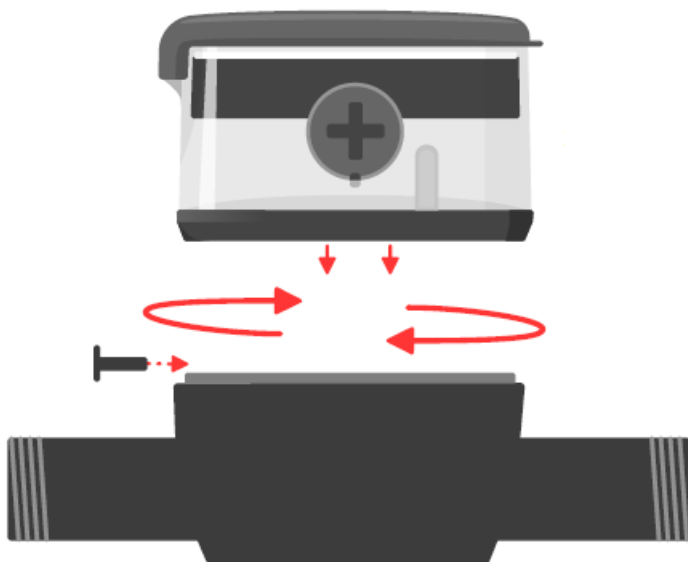


1. Remove the security pin or screw from the register
2. Rotate and/or pull the register up to remove from the meter body

Note: some meter models will require additional tools to help remove the register. See manufacturer instructions, or contact Next Meters Product Support for additional tips.

Attach the Next Register

1. Set the register onto the meter body and slowly rotate to find the alignment grooves
2. Insert the Security Pin
3. Rotate 1/8th turn to secure the Register to the meter

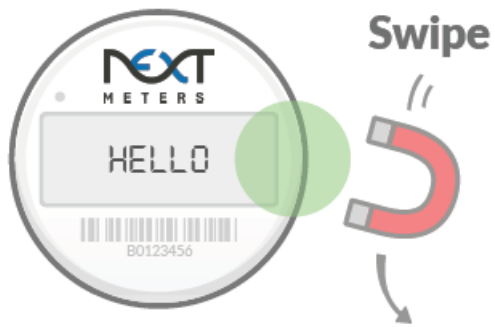



Configure

Swipe and Configure

The Next Register's configuration must be set for the meter body it will be paired with. If your Register was not ordered pre-configured, then you can easily configure it using your mobile device.

1. Swipe your magnet next to the right side of the register



2. The  gear icon will display on the LCD showing it is ready to connect
3. In the Next Meters Mobile App select the Connect tab



4. Select the meter body that you are pairing with your Next Register

Configuration Options

Wire Output

- Pulse Output
- Encoded Protocol
- Sensus
- Neptune
- Elster/AMCO

Unit of Measure

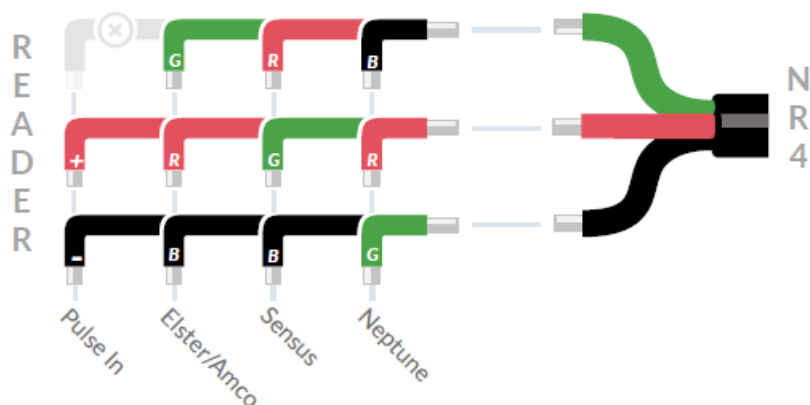
- Gallons
- Cubic Feet
- Liters
- Cubic Meters

Alerts

- Leak Alert
(Icon shows when leak is occurring)
- Freeze Alert
(Icon shows if freezing)

Wiring

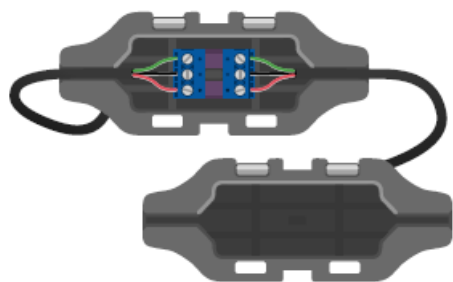
When installing an NR4 Register with bare-wire connection, match the color coding to the protocol of your transmitter.



Splice Connection

To splice the bare wire connections, use the Field Splice Kit (available separately).

1. Secure the Next Register wires, and transmitter wires using the screw terminals
2. Ensure the transmitter is able to read the Next Register to verify the wiring
3. Snap the cover closed to seal



Mobile App Download



App Store iOS App




Google Play Android App

For more, visit: www.nextmeters.com or contact sales@nextmeters.com



Documents / Resources

	<p>Next METERS NR4 Next Universal and Fully Programmable Register [pdf] User Guide NR4 Next Universal and Fully Programmable Register, NR4, Next Universal and Fully Programmable Register, Fully Programmable Register, Programmable Register, Register</p>
---	--

References

- [NextCentury](#)