




[Home](#) » [next level RACING](#) » **Next Level RACING NLR-S044 Flight Simulator Microsoft Flight Simulator Edition Instruction Manual** 

# Next Level RACING NLR-S044 Flight Simulator Microsoft Flight Simulator Edition Instruction Manual

July 20,  
2025

## Contents [ [hide](#) ]

### 1 NLR-S044 Flight Simulator Microsoft Flight Simulator Edition

#### 1.1 NEXT LEVEL RACING FLIGHT SIMULATOR MICROSOFT FLIGHT SIMULATOR EDITION INSTRUCTION MANUAL

#### 1.2 YOUR FLIGHT JOURNEY STARTS HERE

#### 1.3 TAKE IT TO THE SKIES NEXTLEVELRACING.COM

#### 1.4 PRE-FLIGHT CHECKS

#### 1.5 IN THE BOX: FRAME \*NOT TO SCALE NOTE: Some Items Come with Rust Resistant Coating

#### 1.6 IN THE BOX: SEAT \*NOT TO SCALE

### 2 MOUNTING LOCATIONS HOTAS PLATE

#### 2.1 PRODUCT LEGEND:

#### 2.2 FLIGHT PLATE

#### 2.3 PRODUCT LEGEND:

#### 2.4 MOUSE PLATE

#### 2.5 PRODUCT LEGEND:

#### 2.6 NOT TO SCALE

### 3 CENTRE YOLK FLIGHT PLATE

#### 3.1 PRODUCT LEGEND:

#### 3.2 COLLECTIVE BRACKET

### 3.2 COLLECTIVE BRACKET

### 3.3 PRODUCT LEGEND:

### 3.4 ADJUSTMENT POINTS

### 3.5 OPTIONAL CROSS MEMBER POSITION

### 3.6 PARTS:

### 3.7 SEAT RECLINER ADJUSTMENT

### 3.8 SIDE ARM ADJUSTMENT

### 3.9 CENTRE YOKE PLATE INSTALL

### 3.10 OPTIONAL TURTLE BEACH

### 3.11 YOKE/CLAMP PLATE INSTALL

### 3.12 CENTRE KEYBOARD PLATE INSTALL

### 3.13 OPTIONAL SUPPORT BRACKET INSTALL

### 3.14 PEDAL PLATE ANGLE ADJUSTMENT

### 3.15 HOTAS POLE HEIGHT ADJUSTMENT

### 3.16 TPR RUDDER INSTALLATION

### 3.17 EXTENDED HOTAS INSTALLATION

### 3.18 HOTAS BRACKET ANGLE ADJUSTMENT

### 3.19 COLLECTIVE BRACKET INSTALLATION

### 3.20 EXTENDED COLLECTIVE INSTALLATION (RECOMMENDED FOR EXTENDED COLLECTIVES)

### 3.21 COLLECTIVE BRACKET ADJUSTMENT

### 3.22 BUTTKICKER POLE INSTALL

### 3.23 MOUSE MAT INSTALL

### 3.24 KEYBOARD MAT INSTALL

## 4 Documents / Resources

### 4.1 References

# NLR-S044 Flight Simulator Microsoft Flight Simulator Edition

## NEXT LEVEL RACING FLIGHT SIMULATOR MICROSOFT FLIGHT SIMULATOR EDITION INSTRUCTION MANUAL



support@nextlevelracing.com

## YOUR FLIGHT JOURNEY STARTS HERE

We know you're eager to start flying! Take your time with the instructions and follow this guide to assemble your product. You'll be setting yourself up for success by following the instruction booklet to fully optimize your product.



**TAKE IT  
TO THE SKIES  
NEXTLEVELRACING.COM**

support@nextlevelracing.com

## PRE-FLIGHT CHECKS

## WARNING & ASSEMBLY TIPS

- Please do not use power tools for assembly as over tightening can damage your frame.
- Lay out and build the cockpit on a level surface.
- Do not force parts together.
- Avoid cross threading bolts.
- If in doubt consult the installation video.
- Ensure all assembly fittings are properly tightened and periodically thereafter for safety and stability.
- Moving parts present a pinch hazard. Take care when adjusting to avoid injury.
- Do not use the seating if any part is broken, torn, or missing.

If you require any support with your product, please contact our friendly team at:  
[support@nextlevelracing.com](mailto:support@nextlevelracing.com)

**WARNING CHOKING HAZARD** – Small parts not for children under 3 years or any individuals who have a tendency to place inedible objects in their mouths.



NLR-S044 NEXT LEVEL RACING FLIGHT SIMULATOR

MICROSOFT FLIGHT SIMULATOR EDITION

NLR-S044 INSTRUCTIONS

Date of Document: May, 2025

Manufactured by:

Next Level Racing Simulations PTY LTD

23 Olympic CCT,

Southport, QLD 4215,

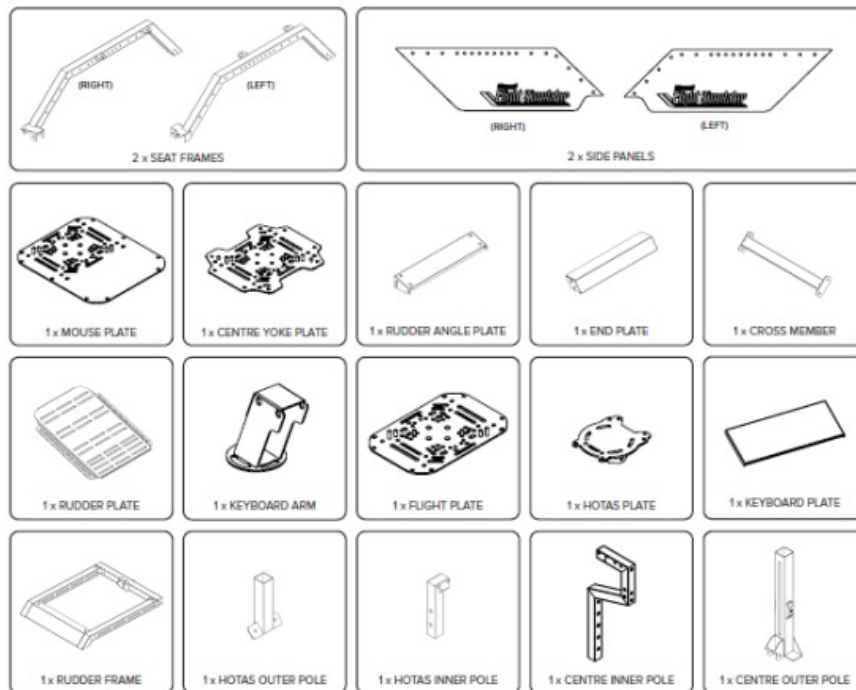
Australia

Video Instruction: [bit.ly/nlrbuild](https://bit.ly/nlrbuild)

## IN THE BOX: FRAME

**\*NOT TO SCALE**

**NOTE: Some Items Come with Rust Resistant Coating**



[support@nextlevelracing.com](mailto:support@nextlevelracing.com)

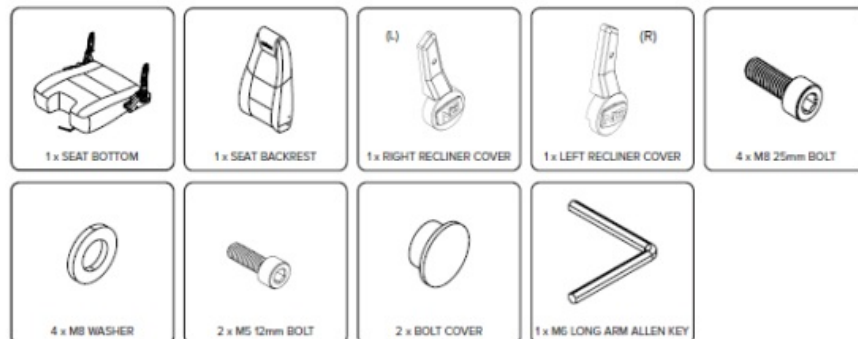


Video Instruction: [bit.ly/nlrbuild](https://bit.ly/nlrbuild)

## IN THE BOX: SEAT \*NOT TO SCALE

NOTE: Some Items Come with Rust Resistant Coating

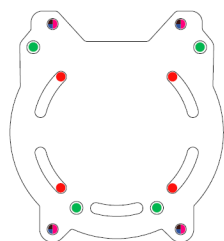
(R) (L)



[support@nextlevelracing.com](mailto:support@nextlevelracing.com)

## MOUNTING LOCATIONS HOTAS PLATE

### PRODUCT LEGEND:



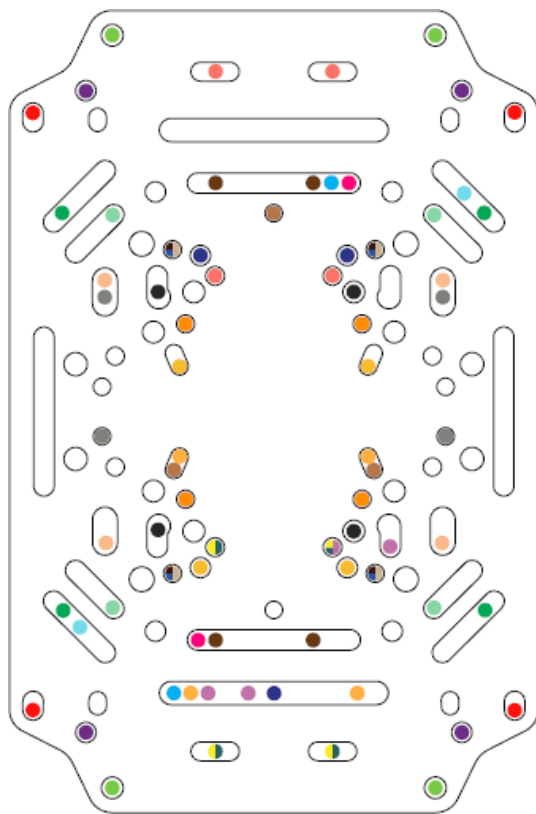
### PRODUCT LEGEND:

- MOZA AB9 FFB HOTAS Base
- TM HOTAS Warthog Stick / Winwing HOTAS Orion 2
- Virpil Mongoos T-50CM2 Base
- Virpil Mongoos T-50CM3 with WarBRD Base

Winwing Super Libra

Video Instruction: [bit.ly/nlrbuild](https://bit.ly/nlrbuild)

## FLIGHT PLATE



## PRODUCT LEGEND:

- Logitech G X56 Throttle/HOTAS
- Logitech G X52 Throttle/HOTAS
- MOZA AB9 FFB HOTAS Base
- MOZA MTP Throttle Panel-T00
- TMT.16000M / TCA Sidestick Airbus
- TM HOTAS Warthog Stick / Winwing HOTAS
- Orion 2
- TM HOTAS Warthog Duel Throttle / Winwing
- Orion 2 Throttle
- TM TCA Quadrant Airbus Edition Throttle
- TM TCA Throttle Quadrant Boeing Edition
- TM TWCS Throttle
- Turtle Beach VelocityOne Flightstick
- Virtual Fly TQ3+
- Virtual Fly TQ6+

Virtual Fly V3RNIO+

VKB Gladiator NXT

VKB Gunfighter PRO MK.II

Virpil CDT-AEROMAX Flightstick

Virpil Mongoos T-50CM2 Base

Virpil Mongoos T-50CM3 with WarBRD Base

Virpil Universal Control Panel 1, 2 & 3

Virpil CDT-VMAX Throttle

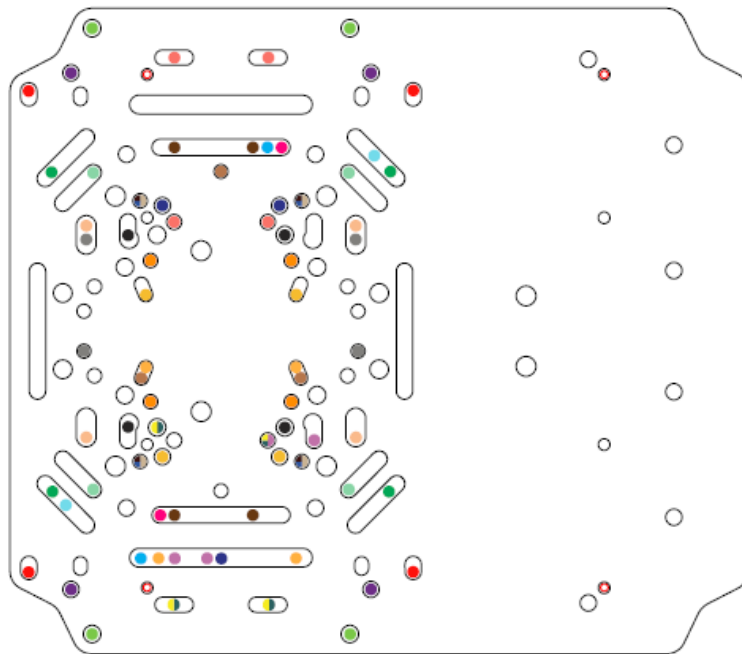
Virpil Mongoos T-50CM3 Throttle

Virpil Rotor TCS Plus Base

Winwing Gemini Throttle Base

[support@nextlevelracing.com](mailto:support@nextlevelracing.com)

## MOUSE PLATE



## PRODUCT LEGEND:

- Honeycomb Bravo Throttle Quadrant
- Logitech G X52 Throttle/HOTAS
- Logitech G X56 Throttle/HOTAS
- MOZA AB9 FFB HOTAS Base
- MOZA MTP Throttle Panel-T00
- TM 16000M / TCA Sidestick Airbus
- TM HOTAS Warthog Stick / Winwing HOTAS Orion 2
- TM HOTAS Warthog Duel Throttle / Winwing Orion 2 Throttle
- TM TCA Quadrant Airbus Edition Throttle
- TM TCA Quadrant Boeing Edition Throttle
- TM TWCS Throttle
- Turtle Beach VelocityOne Flightstick

**NOT TO SCALE**



- Virtual Fly TQ3+
- Virtual Fly TQ6+
- Virtual Fly V3RNIO+
- VKB Gladiator NXT
- VKB Gunfighter PRO MK.II
- Virpil CDT-AEROMAX Flightstick
- Virpil CDT-VMAX Throttle

Virpil Mongoos T-50CM2 Base

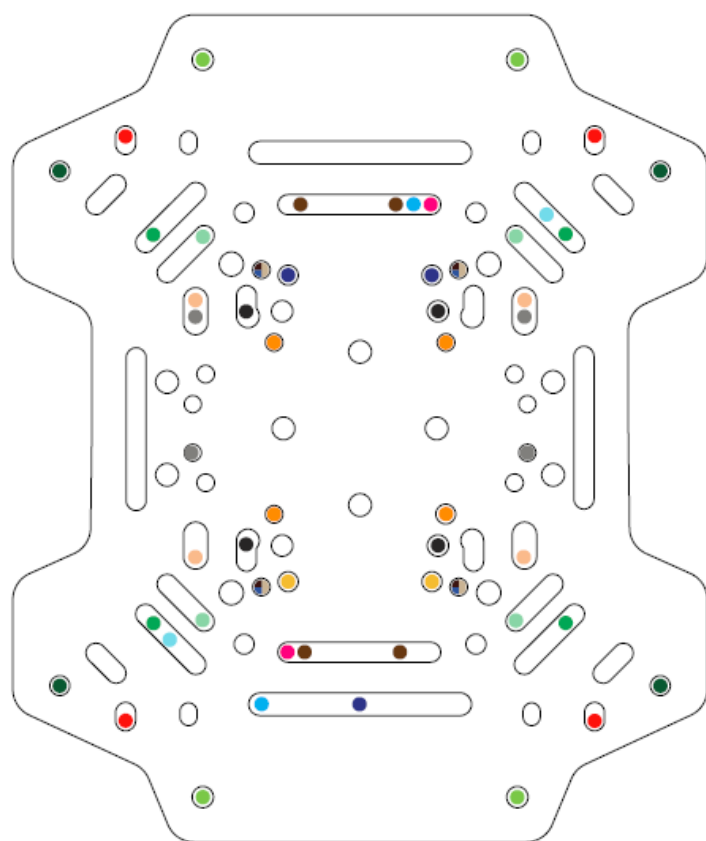
Virpil Mongoos T-50CM3 with WarBRD Base Virpil Mongoos T-50CM3 Throttle

Virpil Universal Control Panel 1, 2 & 3 Virpil Rotor TCS Plus Base

Winwing Gemini Throttle Base

Video Instruction: [bit.ly/nlrbuild](https://bit.ly/nlrbuild)

## CENTRE YOLK FLIGHT PLATE



### PRODUCT LEGEND:

- Logitech G X56 Throttle/HOTAS
- Logitech G X52 Throttle/HOTAS
- MOZA AB9 FFB HOTAS Base
- MOZA MTP Throttle Panel-T00
- TMT.16000M / TCA Sidestick Airbus
- TM HOTAS Warthog Stick / Winwing
- HOTAS Orion 2
- TM HOTAS Warthog Duel Throttle /
- Winwing Orion 2 Throttle
- TM TCA Quadrant Airbus Edition
- Throttle

TM TCA Throttle Quadrant Boeing Edition

TM TWCS Throttle

Virtual Fly TQ3+

Virtual Fly TQ6+

Virtual Fly V3RNIO+

Virtual Fly Yoko / Yoko+

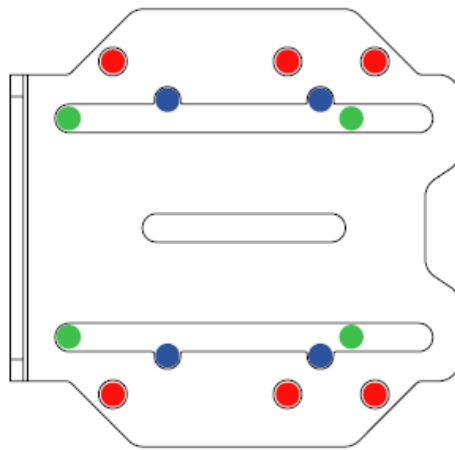
Virpil Mongoos T-50CM2 Base

Virpil Mongoos T-50CM3 with WarBRD Base

Winwing Gemini Throttle Base

NOT TO SCALE [support@nextlevelracing.com](mailto:support@nextlevelracing.com)

## COLLECTIVE BRACKET



NOT TO SCALE

## PRODUCT LEGEND:

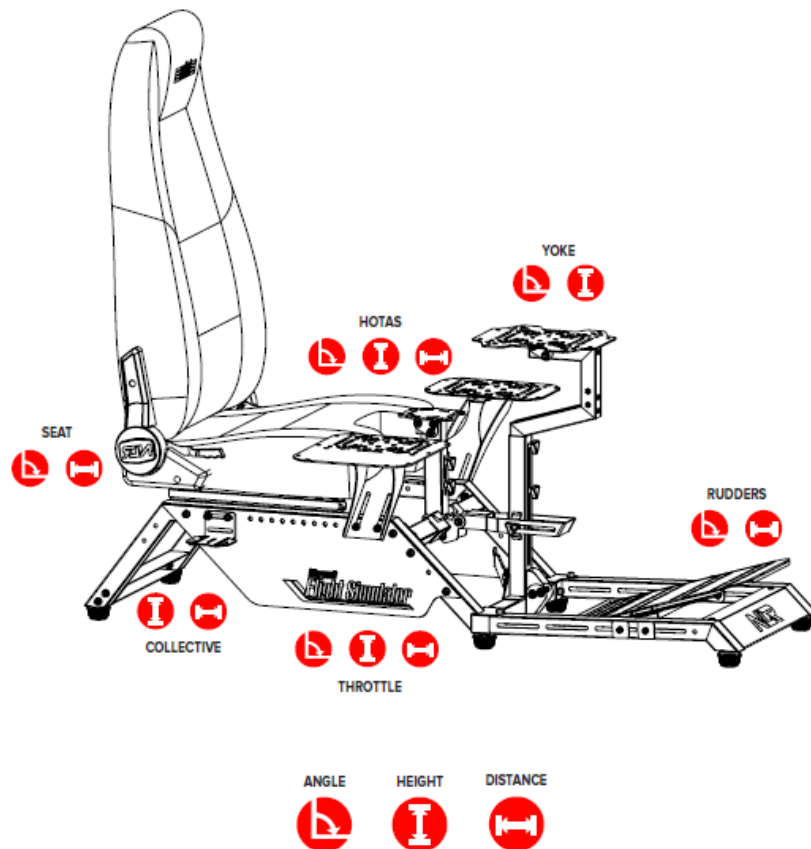
- Winwing Gemini Collective
- Virpil Collective with Bracket – Vertical Setup
- Virpil Collective with Bracket – Horizontal Setup

Video Instruction: [bit.ly/nlrbuild](https://bit.ly/nlrbuild)

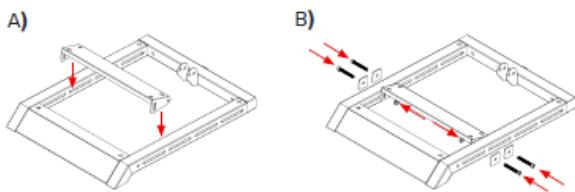
## ADJUSTMENT POINTS

The Flight Simulator is a fully adjustable cockpit making it perfect for flight enthusiasts of all sizes.

Utilize the various adjustment points to achieve the most comfortable position.



support@nextlevelracing.com



## PARTS:

1. A) B)

- 1 x Rudder Frame
- 1 x Rudder Angle Plate
- 4 x M8 55mm Bolts
- 4 x Square Washers
- 4 x M8 Flange Nuts

A) Align the mounting holes on the Rudder Angle Plate with the slots on the Rudder Frame.

B) Bolt through and secure with 4 x M8 Bolts, Square Washers and Flange Nuts.

## PARTS:

- 1 x Rudder Plate
- 4 x M8 16mm Bolts
- 4 x M8 Washers

02 A) Align the mounting slots on the Rudder Plate with the threaded inserts on the Rudder Angle Plate. B) Bolt through and secure with 4 x M8 Bolts and Washers.

#### **PARTS:**

- 2 x Seat Frames
- 2 x M8 55mm Bolts
- 2 x M8 16mm Bolts
- 4 x M8 Washers
- 2 x M8 Flange Nuts

A) Align the mounting holes on the Seat Frames with the mounting holes and threaded inserts on the Rudder Frame.

B) On the top of the frame, bolt through and secure the Seat Frames with 2 x M8 16mm Bolts and Washers.

C) Bolt through the centre of the frame and secure with 2 x M8 55mm Bolts, Washers and Flange Nuts.

Video Instruction: [bit.ly/nlrbuild](https://bit.ly/nlrbuild)

#### **PARTS:**

- 1 x End Plate
- 4 x M8 55mm Bolts
- 4 x M8 Washers

04 A) Align the threaded inserts on the End Plate with the mounting holes on the Left and Right Seat Frames.

B) Bolt through and secure with 4 x M8 Bolts and Washers.

#### **PARTS:**

- 2 x Side Panels
- 4 x M8 55mm Bolts
- 4 x M8 Washers

- 4 x M8 Flange Nuts

05 Align the mounting holes on the Side Panels with the through holes on the Seat Frames. Bolt through and secure with 4 x M8 Bolts, Washers and Flange Nuts.

**PARTS:**

- 1 x Cross Member
- 4 x M8 55mm Bolts
- 4 x M8 Washers
- 4 x M8 Flange Nuts

A) Align the mounting holes on the Cross Member with the through holes on the Left and Right Seat Frames and Side Panels.

B) Bolt through and secure with 4 x M8 Bolts, Washers and Flange Nuts.

[support@nextlevelracing.com](mailto:support@nextlevelracing.com)

**OPTIONAL CROSS MEMBER POSITION**

**NOTE:** To lower your Flight Stick for the optional HOTAS assembly, see Step 16, you can use this position. This adjustment also moves the stick further forward.

Additionally, in this position, the center pole support bracket for the YOKE assembly will not connect.

**PARTS:**

- 1 x Cross Member (from Step 06)
- 4 x M8 55mm Bolts (from Step 06)

A) B)07 A) Uninstall the hardware and Cross Member.

- 4 x M8 Washers (from Step 06)
- 4 x M8 Flange Nuts (from Step 06)

B) Align the mounting holes on the Cross Member with the through holes on the Left and Right Seat Frames and Side Panels.

**PARTS:**

- 1 x Seat Backrest

- 1 x Seat Bottom
- 4 x M8 25mm Bolts
- 4 x M8 Washers

**WARNING:** Make sure both Seat Recliner Arms are set to the same angle before Side assembling the seat. If an adjustment is required use a cloth to protect your hand while adjusting. Remove warning labels once adjustment has been made.

A) Align the threaded inserts on the Seat Backrest with the mounting holes on the Seat Recliners.

B) Bolt through and secure with the M8 Bolts and Washers.

#### **PARTS:**

- 1 x Right Seat Recliner Cover 1 x Left Seat Recliner Cover
- 2 x M5 12mm Bolts
- 2 x Bolt Covers

A) Align the mounting hole on the Seat Recliner Covers with the Seat Recliners.

B) Bolt through and secure with the M5 Bolts and press fit the Bolt Covers to cover the hole.

### **SEAT RECLINER ADJUSTMENT**

**WARNING:** The Seat Recliners are spring loaded, take care when adjusting to avoid injury.

Video Instruction: [bit.ly/nlrbuild](https://bit.ly/nlrbuild)

#### **PARTS:**

- NIL

Lift both Seat Recliner Levers to change the angle of the Seat Backrest. Release the levers adjusting 10 the backrest to lock in place.

(4x Seat Mounting Locations)

(Two Each Side of Seat Frames)

**PARTS:**

- 2 x M8 16mm Square Neck Bolts (preinstalled to seat rails)
- 2 x M8 Nylon Lock Nuts
- 2 x M8 Washers (preinstalled to seat rails)

A) Remove Preinstalled Hardware and pull the Seat Slider handle up and adjust the Seat to the forward-most position.

B) Align the mounting holes on the Seat Sliders with the seat mounting locations (Refer to image) on the Left and Right Seat Frames.

C) At the rear, bolt through and secure with 2 x M8 Square Neck Bolts, Nylon Lock Nuts and Washers.

**PARTS:**

- 2 x M8 16mm Square Neck Bolts (preinstalled to seat rails)
- 2 x M8 Nylon Lock Nuts
- 2 x M8 Washers (preinstalled to seat rails)

A) Pull the Seat Slider handle up and adjust the Seat to the rear-most position.

B) At the front, bolt through and secure with 2 x M8 Square Neck Bolts, Nylon Lock Nuts and Washers.

[support@nextlevelracing.com](mailto:support@nextlevelracing.com)

**PARTS:**

A) B)L) R) • 2 x Side Arms

- 4 x M8 55mm Bolts

- 4 x M8 Washers

- 4 x M8 Flange Nuts

A) Align the mounting slots on the Left and Right Side Arms with the through holes on the Left and Right Seat Frames and Side Panels.

B) Bolt through and secure with 4 x M8 Bolts, Washers and Flange Nuts.

## **SIDE ARM ADJUSTMENT**

PARTS:

- NIL

Loosen the Bolts to adjust the Side Arms to the desired height and angle. Tighten the Bolts to lock in place. Utilize the extra through holes on the Seat Frames for back and forward adjustment.

NOTE: The plates are interchangeable and can be mounted to accommodate either left or right-handed users.

PARTS:

- 1 x Mouse Plate
- 1 x Flight Plate
- 8 x M8 Flange Nuts

Align the Threaded Studs on the Mouse Plate and Flight Plate with the mounting holes on the Left and Right Side Arms. Secure with 8 x M8 Flange Nuts.

OPTIONAL HOTAS INSTALL (SKIP TO PAGE 24 FOR EXTENDED HOTAS SETUP)

Video Instruction: [bit.ly/nlrbuild](https://bit.ly/nlrbuild)

**PARTS:**

- 1 x HOTAS Outer Pole



- 2 x M8 55mm Bolts
- 2 x M8 Washers
- 2 x M8 Flange Nuts

A) Align the mounting holes on the HOTAS Outer Pole with the through holes on the Cross Member.

B) Bolt through and secure with 2 x M8 Bolts, Washers, and Flange Nuts.

**PARTS:**

- 1 x HOTAS Inner Pole
- 2 x 20mm Knobs

A) Align the threaded inserts on the HOTAS Inner Pole with the slot on the HOTAS Outer pole.

B) Bolt through and secure with 2 x Knobs.

**PARTS:**

- 1 x HOTAS Plate
- 3 x M8 55mm Bolts
- 3 x M8 16mm Washers
- 3 x M8 Flange Nuts

A) Align the mounting holes on the HOTAS Plate with the through holes on the HOTAS Inner Pole.

B) Bolt through and secure with 3 x M8 Bolts, Washers and Flange Nuts.

[support@nextlevelracing.com](mailto:support@nextlevelracing.com)

**PARTS:**

- 1 x Centre Outer Pole
- 2 x M8 55mm Bolts
- 2 x M8 Washers
- 2 x M8 Flange Nuts

- 1 x Barrel Spacer

A) Align the mounting holes on the Centre Outer Pole with the holes on the Rudder Frame.

B) Align the Barrel Spacer with the holes on the Centre Outer Pole. Bolt through and secure with 2 x M8 Bolts, Washers and Flange Nuts.

Gently place the Centre Pole on top of the Rudder Frame and make sure the latch is down.

Hook the U-Bolt into the locking tab on the

Rudder Frame.

NOTE: Periodically tighten the nuts.

Make sure the U bolt is sitting properly in the locking tab and pull the latch until its tight.

For a tighter lock, undo the latch, adjust the nuts at the top of the latch and close it back again.

Video Instruction: [bit.ly/nlrbuild](https://bit.ly/nlrbuild)

## **PARTS:**

- 1 x Centre Inner Pole
- 2 x 20mm Knobs
- 1 x Felt Pad

A) Install 1 x Felt Pad onto the top of the Centre Inner Pole. Align the threaded inserts on the Centre Inner Pole with the slots on the Centre Outer Pole.

B) Bolt through and secure with 2 x Knobs.

## **CENTRE YOKE PLATE INSTALL**

### **PARTS:**

- 1 x Centre Yoke Plate
- 3 x M8 55mm Bolts

- 3 x M8 16mm Washers
- 3 x M8 Flange Nuts

A) Align the mounting holes on the Centre Yoke Plate with the through holes on the Centre Inner Pole.

B) Bolt through and secure with 3 x M8 55mm Bolts, Washers and Flange Nuts.

## **OPTIONAL TURTLE BEACH**

ADAPTOR INSTALL (Continue from Step 19a)

### **PARTS:**

- 1 x Turtle Beach Adaptor Plate
- 2 x M6 20mm Press Fit Studs
- 2 x M6 Flange Nuts

A) Insert the 2 x M6 Studs into the rear-most holes on the Centre Yoke Plate.

B) Align the mounting holes on the Turtle Beach Adaptor Plate with the threaded studs, secure with 2 x M6 Flange Nuts.

[support@nextlevelracing.com](mailto:support@nextlevelracing.com)

## **YOKE/CLAMP PLATE INSTALL**

Place the Clamp Plate on top of the Centre Inner Pole.

### **PARTS:**

- 1 x Clamp Plate
- 2 x M8 55mm Bolts
- 2 x M8 Washers
- 2 x M8 Flange Nuts

B) Slide the Clamp Plate forward and align the mounting holes on the Centre Inner Pole and Clamp Plate.

C) Bolt through and secure with 2 x M8 Bolts, Washers and Flange Nuts.

## **CENTRE KEYBOARD PLATE INSTALL**

## **PARTS:**

- 1 x Keyboard Plate
- 2 x M8 55mm Bolts
- 2 x M8 Washers
- 2 x M8 Flange Nuts

A) Align the mounting holes and slots on the Keyboard Plate with the through holes on the Centre Inner Pole.

B) Bolt through and secure with 2 x M8 Bolts, Washers and Flange Nuts.

Video Instruction: [bit.ly/nlrbuild](https://bit.ly/nlrbuild)

## **PARTS:**

- 6 x Adjustable Feet

A) Align the Adjustable Feet with the threaded inserts on the bottom of the Rudder Frame and Seat Frames.

B) Lock into place by twisting the Adjustable feet into the threaded inserts. To raise an Adjustable Feet, twist anti-clockwise.

## **PARTS:**

- NIL

24 Your Flight Simulator cockpit is complete.

## **OPTIONAL SUPPORT BRACKET INSTALL**

### **PARTS:**

- 1 x Support Bracket
- 1 x Support Bracket Mount

- 1 x M8 70mm Bolt
- 1 x Barrel Spacer
- 1 x M8 Washer
- 1 x M8 Flange Nut

25 Align the pivot point on the Support Bracket with the mounting holes on the Support Bracket Mount. Bolt through and secure with 1 x M8 Bolt, Washer, Barrel Spacer and Flange Nut.

support@nextlevelracing.com A) B)

**PARTS:** • NIL

) Uninstall the Knobs securing the Centre Inner Pole to the Centre Outer Pole and remove the Centre Outer Pole.

B) Uninstall the 2 x M8 Flange Nuts securing the HOTAS Outer Pole to the Cross Member.

**PARTS:**

A) B)

- 2 x M8 Flange Nuts

A) Align the mounting holes on the Support Bracket with the through holes on the Cross Member.

B) Secure with 2 x M8 Flange Nuts previously uninstalled in Step 26.

**PARTS:**

- 1 x Centre Inner Pole
- 4 x 12mm Knobs

A) Align the threaded inserts on the Centre Outer Pole with the slots on the Support Bracket. Bolt through with 2 x Knobs.

B) Fit the Centre Inner Pole into the Centre Outer Pole. Align the threaded inserts on the Centre Inner Pole with the slot in the Centre Outer Pole. Bolt through and secure with 2 x Knobs previously uninstalled in Step 26.

## OPTIONAL KEYBOARD PLATE SIDE MOUNT

Video Instruction: [bit.ly/nlrbuild](https://bit.ly/nlrbuild)

### **PARTS:**

- 1 x Keyboard Arm
- 2 x M6 16mm Bolts
- 2 x M6 Washers
- 2 x M6 Flange Nuts

Align the mounting slots on the Keyboard Arm with the holes on the Mouse Plate. Bolt through and secure with 2 x M6 Bolts, Washers and Flange Nuts.

### **PARTS:**

- 1 x Keyboard Plate
- 2 x M8 55mm Bolts
- 2 x M8 Washers
- 2 x M8 Flange Nuts

A) Align the mounting holes on the Keyboard Plate with the through holes on the Keyboard Arm.

B) Bolt through and secure with 2 x M8 Bolts, Washers and Flange Nuts.

## OPTIONAL STRAIGHT SIDE ARM

### PARTS:

- NIL

A) Uninstall 2 x M8 Bolts, Washers and Flange Nuts securing the Side Arm. Detach the Flight Plate from the Side Arm.

B) Uninstall 2 x M8 Bolts, Washers and Flange Nuts securing one side of the Cross Member to the Seat Frame.

[support@nextlevelracing.com](mailto:support@nextlevelracing.com)

A) B)NOTE: The Straight Side Arm is interchangeable and works on both sides of the cockpit.

### PARTS:

- 1 x Straight Side Arm
- 2 x M8 55mm Bolts
- 2 x M8 Washers
- 2 x M8 Flange Nuts

A) Align the Straight Side Arm with the through holes in the Seat Frame and Cross Member.

B) Bolt through and secure with 2 x M8 Bolts, Washers and Flange Nuts uninstalled in Step 31.

### PARTS:

- 4 x M8 Flange Nuts

1 x Mouse Plate

A) Align the Mouse Plate Threaded Studs with the mounting holes on the Straight Side Arm.

B) Secure with 4 x M8 Flange Nuts.

## PEDAL PLATE ANGLE ADJUSTMENT

PARTS: • NIL

34 Uninstall the front Bolts, Square Washers and Flange Nuts securing the Rudder Angle Plate to the Rudder Frame and loosen the rear Bolts. Adjust to the desired angle. Bolt through and secure with the Bolts, Square Washers and Flange Nuts previously uninstalled.

## **HOTAS POLE HEIGHT ADJUSTMENT**

Video Instruction: [bit.ly/nlrbuild](https://bit.ly/nlrbuild)

PARTS:

• NIL

35 Loosen the Knobs securing the HOTAS Inner Pole to the HOTAS Outer Pole. Adjust to desired height and tighten Knobs to lock in place.

## **HOTAS POLE ANGLE ADJUSTMENT**

PARTS: • NIL

36 Uninstall the front Bolts, Washers and Flange Nuts securing the HOTAS Plate to the HOTAS Inner Pole. Angle to the desired position. Bolt through and secure with 1 x Bolt, Washer and Flange Nut previously uninstalled.

## **CENTRE POLE HEIGHT ADJUSTMENT**

PARTS: • NIL

37 Loosen the Knobs securing the Inner Centre Pole to the Outer Centre Pole. Adjust the Inner Centre Pole to the desired height and tighten the Knobs to secure in place. Utilize the multiple threaded inserts for a perfect fit.

[support@nextlevelracing.com](mailto:support@nextlevelracing.com) CENTRE PLATE ANGLE ADJUSTMENT



PARTS: • NIL

38 Uninstall the front Bolts, Washers and Flange Nuts securing the Centre Plate to the Inner Centre Pole. Angle to the desired position. Bolt through and secure with 1 x Bolt, Washer and Flange Nut previously uninstalled.

## **TPR RUDDER INSTALLATION**

39 Install 4 x M6 Threaded Studs into the TPR Adaptor.

PARTS:

- 1 x TPR Adaptor
- 4 x M6 20mm Threaded Studs

PARTS:

- 2x M6 Flange Nuts
- TPR Rudder (not included)

A) Align the mounting holes on the front of the TPR Rudder with the Threaded Studs on the TPR Adaptor.

B) Secure with 2 x M6 Flange Nuts. The TPR Rudders are ready to install onto the cockpit.

## **EXTENDED HOTAS INSTALLATION**

NOTE: To achieve the lowest Flight Stick position, install the extended HOTAS Bracket in the lower cross-member position as shown in Step 07.

Video Instruction: [bit.ly/nlrbuild](https://bit.ly/nlrbuild)

PARTS:

- 1 x Extended HOTAS Bracket

- 2 x 55mm Sockethead Bolts
- 2 x M8 Washers
- 2 x M8 Flange Nuts

41 Align the mounting holes on the Extended HOTAS Bracket with the mounting holes on the cross member. Bolt through and secure with 2 x M8 Bolts, Washers and Flange Nuts.

**PARTS:**

- 1 x HOTAS Plate
- 2 x 55mm Sockethead Bolts
- 2 x M8 Washers
- 2 x M8 Flange Nuts

42 Align the mounting holes on the HOTAS Plate with the mounting holes on the Extended HOTAS Bracket. Bolt through and secure with 2 x M8 Bolts, Washers and Flange Nuts.

## **HOTAS BRACKET ANGLE ADJUSTMENT**

**PARTS:** • NIL

43 Uninstall the front M8 Bolt, Washer and Flange Nut securing the HOTAS PLATE to the HOTAS Bracket. Adjust the HOTAS Plate to the desired angle and re-install hardware to secure.

[support@nextlevelracing.com](mailto:support@nextlevelracing.com)

## **COLLECTIVE BRACKET INSTALLATION**

**PARTS:**

- 1 x Collective Bracket
- 2 x 55mm Sockethead Bolts
- 2 x M8 Washers
- 2 x M8 Flange Nuts

44 Align the horizontal slots on the Collective Bracket with the mounting holes on the frame of the cockpit. Bolt through and secure with 2 x M8 Bolts, Washers and Flange Nuts.

## **EXTENDED COLLECTIVE INSTALLATION (RECOMMENDED FOR EXTENDED COLLECTIVES)**

PARTS:

- 1 x Collective Bracket
- 2 x 55mm Sockethead Bolts
- 2 x M8 Washers
- 2 x M8 Flange Nuts

45 Align the horizontal slots on the Collective Bracket with the mounting holes on the frame of the cockpit. Bolt through and secure with 2 x M8 Bolts, Washers and Flange Nuts.

## **COLLECTIVE BRACKET ADJUSTMENT**

PARTS: • NIL

46 Loosen the bolts securing the Collective Bracket to the cockpit. Adjust to the desired position and tighten bolts to secure.

## **BUTTKICKER POLE INSTALL**

Video Instruction: [bit.ly/nlrbuild](https://bit.ly/nlrbuild)

#### PARTS:

- 1 x Buttkicker Pole
- 2 x M8 16mm Bolts
- 2 x M8 Washers

47 Align the mounting holes on the Buttkicker Pole with the threaded inserts under the Seat Bottom. Bolt through and secure with 2 x M8 Bolts and Washers.

### **MOUSE MAT INSTALL**

#### PARTS:

- 1 x Mouse Mat

48 A Mouse mat may be installed on top of the Flight or Mouse Plate. A mouse may now be used.

### **KEYBOARD MAT INSTALL**

#### PARTS:


- 1 x Keyboard Mat

49 Place the Keyboard Mat on top of the Keyboard Plate. A keyboard may now be used.

[support@nextlevelracing.com](mailto:support@nextlevelracing.com)

#### NOTES

## **Documents / Resources**

	<p><a href="#">Next Level RACING NLR-S044 Flight Simulator Microsoft Flight Simulator Edition [pdf]</a> Instruction Manual</p> <p>NLR-S044, NLR-S044 Flight Simulator Microsoft Flight Simulator Edition, NLR-S044, Flight Simulator Microsoft Flight Simulator Edition, Simulator Microsoft Flight Simulator Edition, Microsoft Flight Simulator Edition, Microsoft Flight Simulator Edition, Flight Simulator Edition, Simulator Edition</p>
---	--

## References

- [User Manual](#)

next level

RACING

Flight Simulator Edition, Flight Simulator Microsoft Flight Simulator Edition, Microsoft Flight Simulator Edition, next level RACING, NLR-S044, NLR-S044 Flight Simulator Microsoft Flight Simulator Edition, Simulator Edition, Simulator Microsoft Flight Simulator Edition

---

## Leave a comment

Your email address will not be published. Required fields are marked \*

Comment \*

Name

Email

Website

☐ Save my name, email, and website in this browser for the next time I comment.

**Post Comment**

**Search:**

e.g. whirlpool wrf535swhz

**Search**

[Manuals+](#) | [Upload](#) | [Deep Search](#) | [Privacy Policy](#) | [@manuals.plus](#) | [YouTube](#)

This website is an independent publication and is neither affiliated with nor endorsed by any of the trademark owners. The "Bluetooth®" word mark and logos are registered trademarks owned by Bluetooth SIG, Inc. The "Wi-Fi®" word mark and logos are registered trademarks owned by the Wi-Fi Alliance. Any use of these marks on this website does not imply any affiliation with or endorsement.