

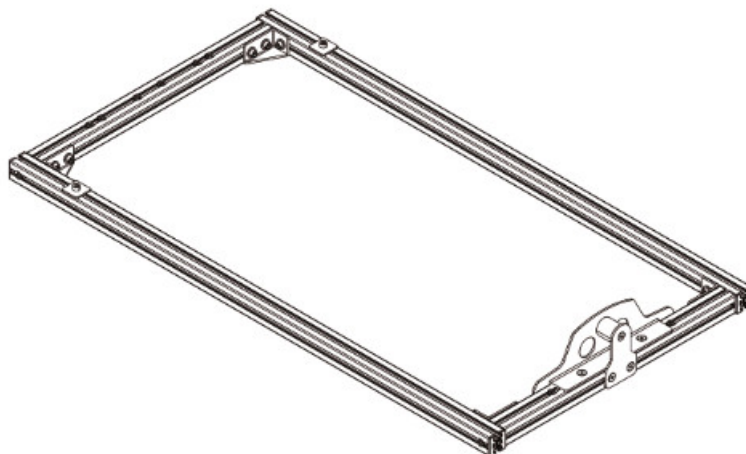


Next Level Racing NLR-E044 Traction Adapter Frame Instruction Manual

[Home](#) » [next level RACING](#) » Next Level Racing NLR-E044 Traction Adapter Frame Instruction Manual



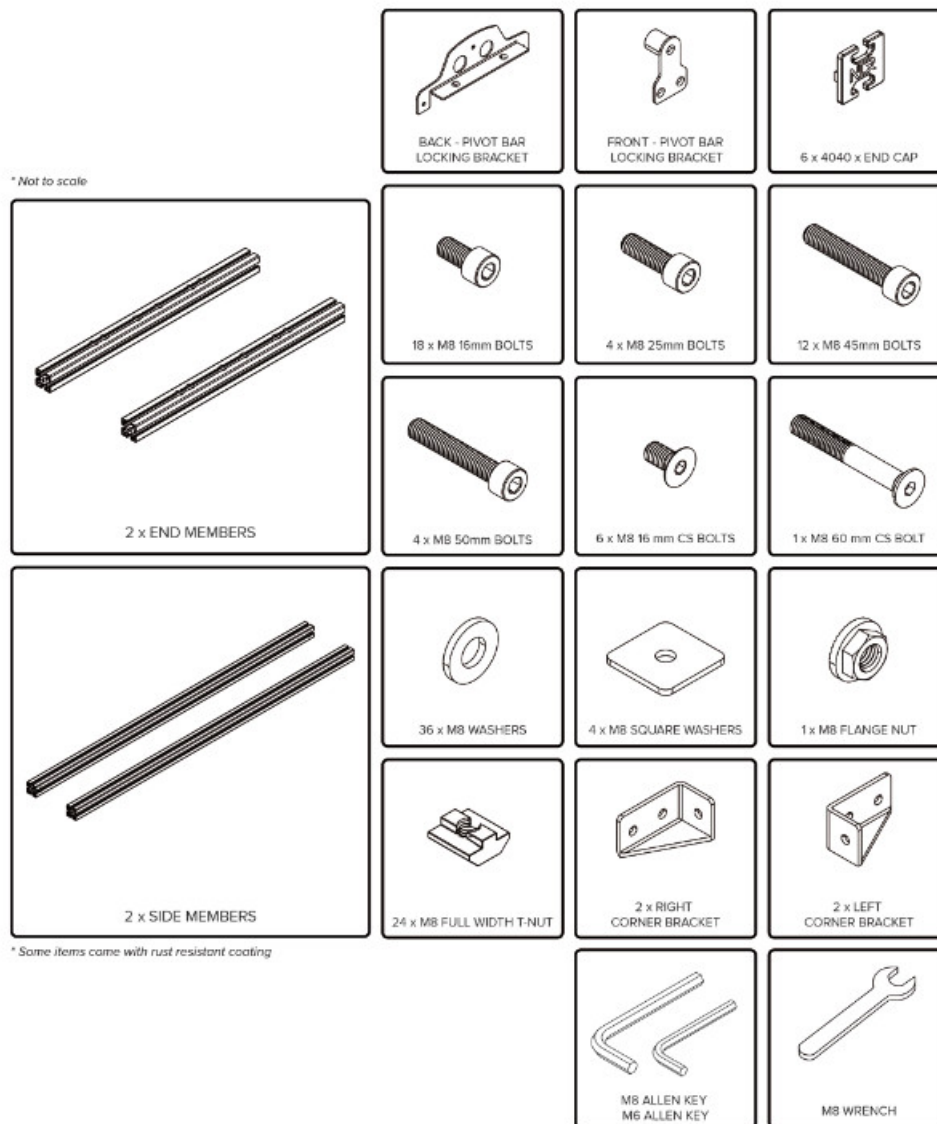
**Motion Plus &
Traction Plus
Adaptor Frame
INSTRUCTION MANUAL**



Contents [[hide](#)]

- 1 IN THE BOX
- 2 ASSISTANCE
- 3 Documents / Resources
- 4 Related Posts

IN THE BOX



If you require any support with your product please contact our friendly team at:
support@nextlevelracing.com



WARNING CHOKING HAZARD– Small parts not for children under 3 years or any individual what have a tendency to place inedible objects in their mounts

Please do not use power tools for assembly as over tightening can damage your frame.

Please ensure T-Nuts are correctly placed within the extrusion to prevent damaging parts.

Lay out and build the Frame on a soft and protected level surface.

Do not force parts together.

Avoid cross threading threaded items.

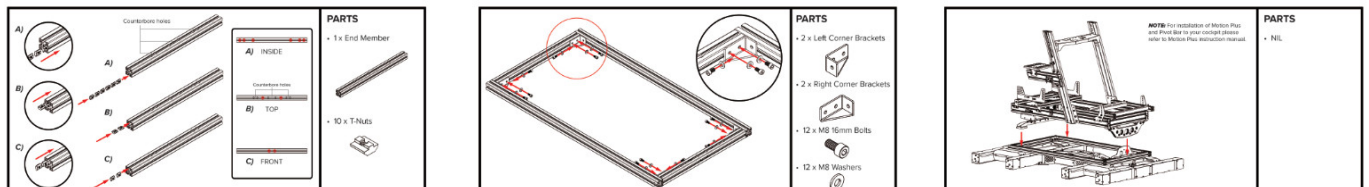
T-Nuts must be installed from the end of the profile and cannot be installed mid channel.

Beware of sharp edges on extrusion pieces.
Plan the placement of cable management clips at the beginning of your build.

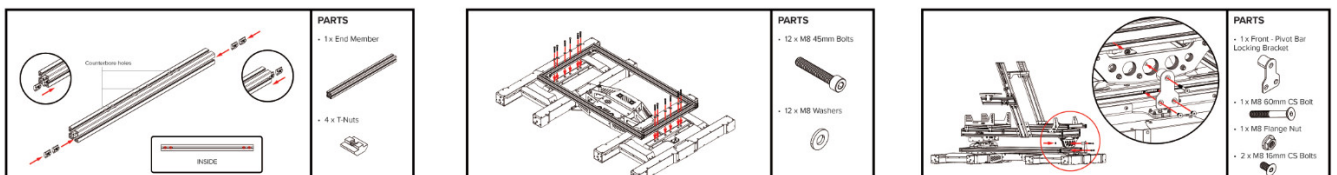
ASSISTANCE



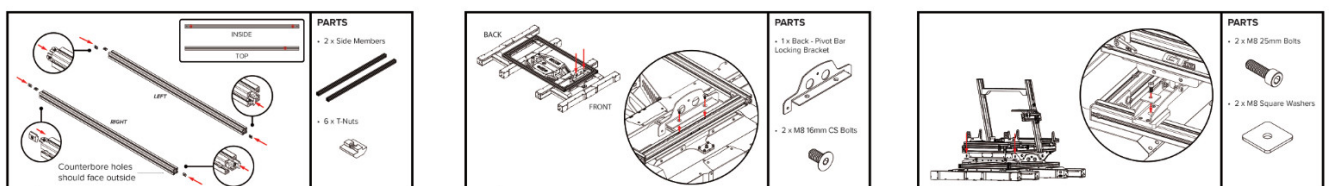
If you require further support with your product please contact our friendly team at:
support@nextlevelracing.com



1. Install 6 x T-Nuts into the inside channel, B) 2 x T-Nuts into the top channel, C) and 2 x T-Nuts into the front channel of the Front End Member. Red dots show T-nuts locations.
2. Align the holes on the Corner Brackets with the T-Nuts previously installed in Steps 01, 02 and 03. Bolt through and secure with 12 x M8 Bolts and Washers.
3. Align the Pivot Bar installed to your cockpit with the Back – Pivot Bar Locking Bracket. Align the mounting holes on the Motion Plus platform feet with the T-Nuts previously installed in Step 03.

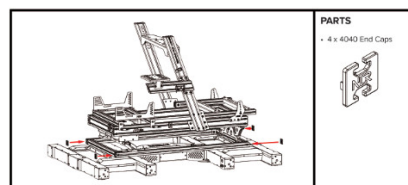
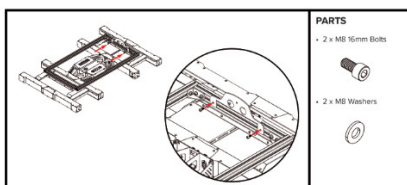
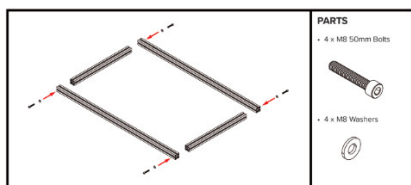


4. Install 4 x T-Nuts into the inside channel of the Back End Member. Red dots show T-Nuts locations.
5. Align the mounting holes on the Front and Back End Members with the mounting holes on the Traction Plus Platform. Bolt through and secure with 12 x M8 Bolts and Washers.
6. Align the top hole on the Front and Back Pivot Bar Locking Brackets. Bolt through and secure with 1 x M8 Countersunk Bolt and Flange Nut. Align the bottom holes on the Front – Pivot Bar Locking Bracket with T-Nuts previously installed in Step 01. Bolt through and secure with 2 x M8 Countersunk Bolts.



7. Install 2 x T-nuts into the inside channel and 1 x T-nut into the top channel of the Side Member. Repeat for both Side Members. Red dots show T-nuts locations.
8. Align the top mounting holes on the Back – Pivot Bar Locking Bracket with the T-Nuts previously installed in Step 01. Bolt through and secure using 2 x M8 Countersunk Bolts.

9. Align the mounting holes on the Motion Plus Platform feet with the T-Nuts previously installed in Step 03. Bolt through and secure with 2 x M8 Bolts and Square Washers.



10. Align the holes on the Side Members with the threaded holes on the Front and Back End Members. Bolt through and secure with 4 x M8 Bolts and Washers.
11. Align the inside mounting holes on the Back – Pivot Bar Locking Bracket with the T-Nuts installed in Step 101. Bolt through and secure using 2 x M8 Bolts and Washers.
12. Install 4 x 4040 End Caps at the end of the Side Members



@next_level_racing



@nextlevelracingOfficial



bit.ly/NLRowner



@nextlviracing



Next Level Racing



support@nextlevelracing.com



**FOLLOW
US**

<https://www.nextlevelracing.com/follow-us/>

Documents / Resources



[Next Level Racing NLR-E044 Traction Adapter Frame](#) [pdf] Instruction Manual
NLR-E044 Traction Adapter Frame, NLR-E044, Traction Adapter Frame, Adapter Frame

