



[Home](#) » [next level RACING](#) » **next level RACING Elite Series Monitor Stand Instruction Manual** 

## Contents [ [hide](#) ]

- 1 Next Level RACING Elite Series Monitor Stand
- 2 IN THE BOX
- 3 INSTALLATION
  - 3.1 SINGLE FREE STANDING MONITOR STAND
  - 3.2 TRIPLE MONITOR SETUP
  - 3.3 OVERHEAD MONITOR SETUP
- 4 Frequently Asked Questions
- 5 Documents / Resources
  - 5.1 References



## Next Level RACING Elite Series Monitor Stand



## YOUR SIM RACING JOURNEY STARTS\ HERE

We know you're eager to start racing! Take your time with the instructions and follow this guide to assemble your product. You'll be setting yourself up for success by following the instruction booklet to fully optimize your product.



- [bit.ly/nlrbuild](https://bit.ly/nlrbuild)
- INST: @next\_level\_racing
- FB: @nextlevelracingOfficial
- TWITTER: @nextlvlracing
- YOUTUBE: Next Level Racing
- [support@nextlevelracing.com](mailto:support@nextlevelracing.com)



## **PRE-RACE CHECKS**

## **WARNING & ASSEMBLY TIPS**

- Please do not use power tools for assembly as over-tightening can damage your frame.
- Please ensure T-Nuts are correctly placed within the extrusion to prevent damaging parts.
- Lay out and build the Monitor Stand on a soft and protected level surface.
- Do not force parts together.
- Avoid cross-threading threaded items.
- If in doubt consult the installation video. (see QR code below or contact us at [support@nextlevelracing.com](mailto:support@nextlevelracing.com))
- Do not hang additional loads on the monitor stand.
- Beware of sharp edges on extrusion pieces.
- Plan the placement of cable management clips at the beginning of your build.
- T-Nuts must be installed from the end of the profile and cannot be installed mid-channel.

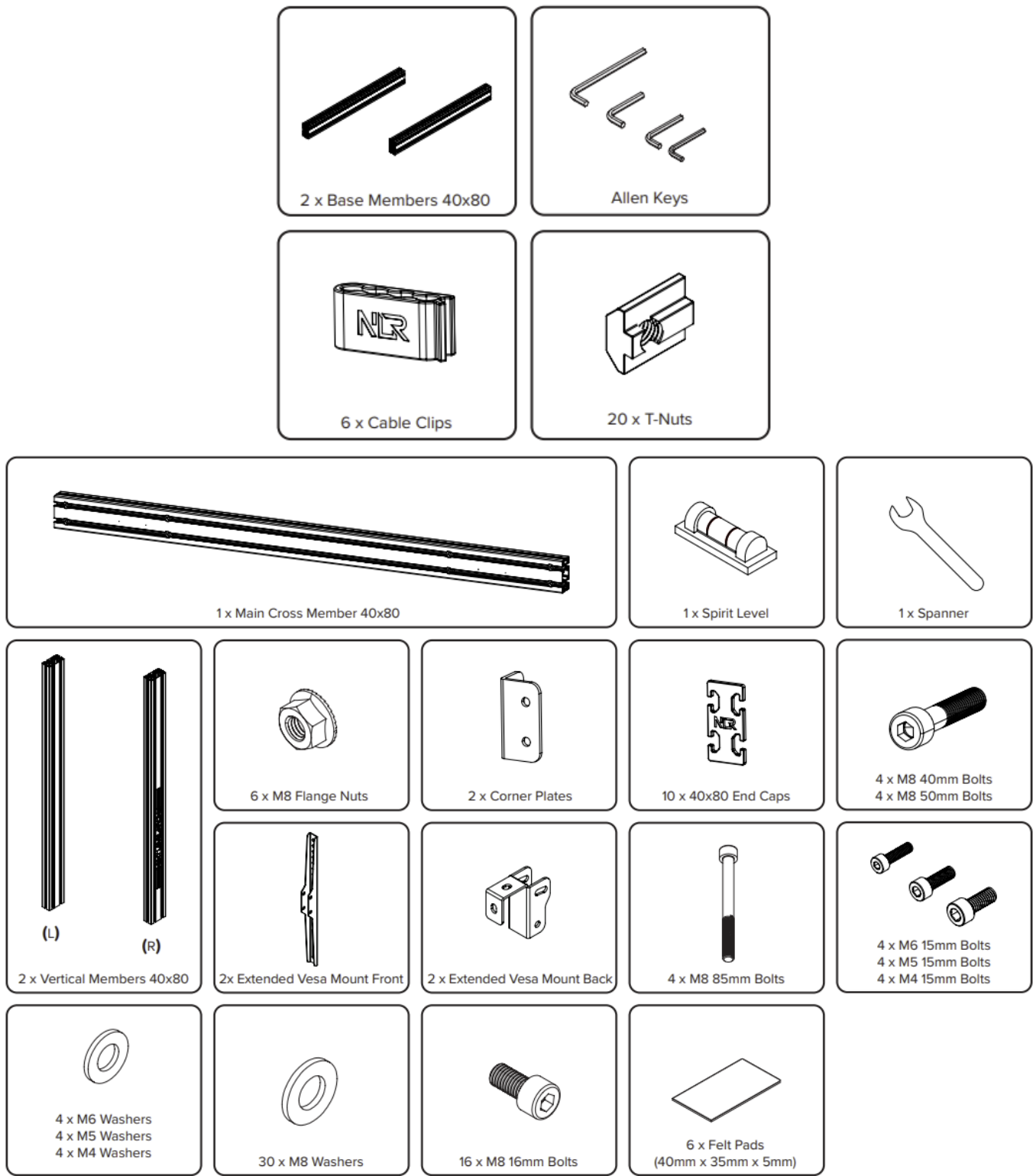
## **WARNING**

CHOKING HAZARD – Small parts not for children under 3 years or any individuals who have a tendency to place inedible objects in their mouths.

## **IN THE BOX**

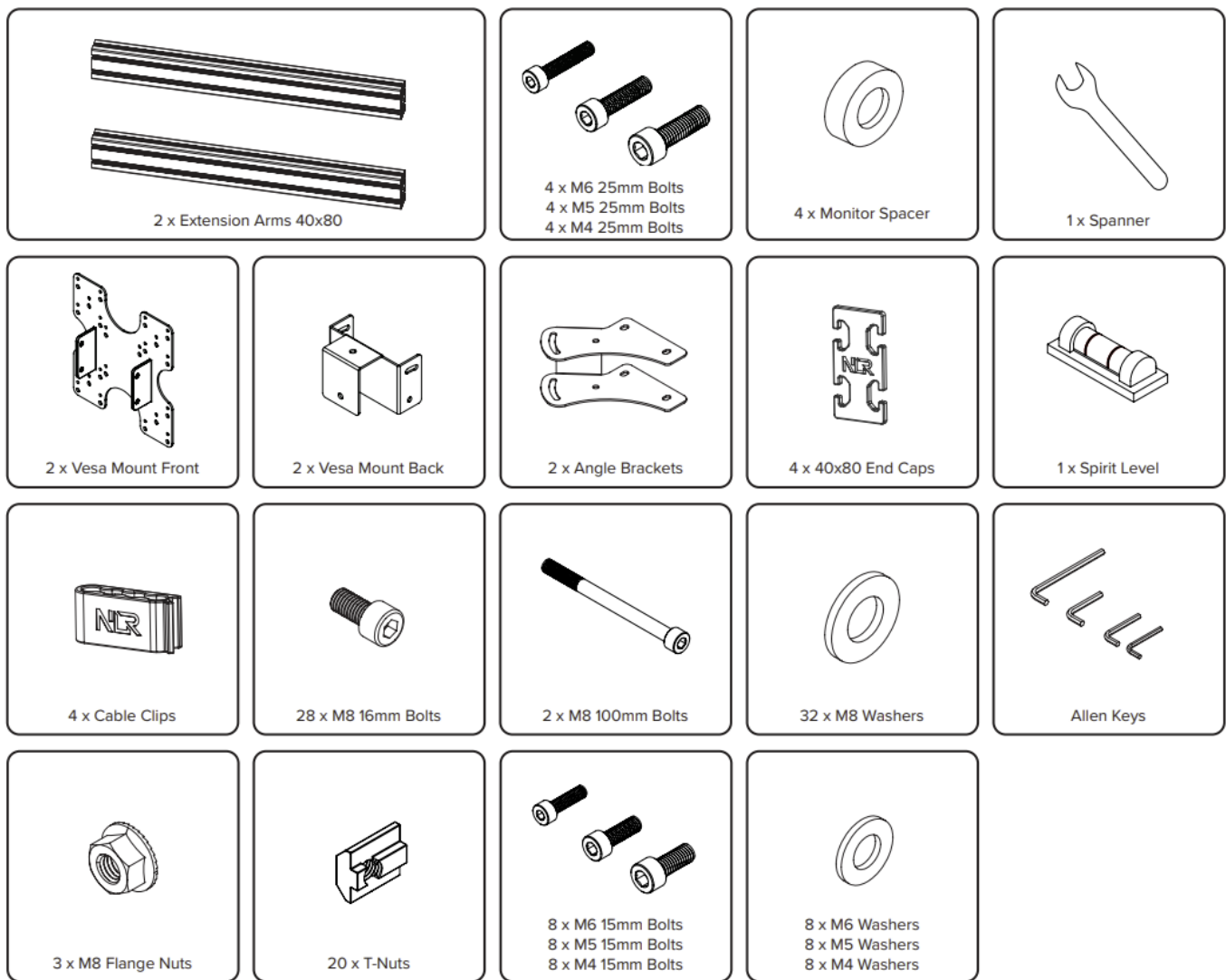
SINGLE MONITOR STAND

NOTE: Some Items Come with Rust Resistant Coating



TRIPLE MONITOR ADD-ON

NOTE: Some Items Come with Rust Resistant Coating



## OVERHEAD MONITOR ADD-ON

NOTE: Some Items Come with Rust Resistant Coating



## TRIPLE COMPLETE MONITOR STAND

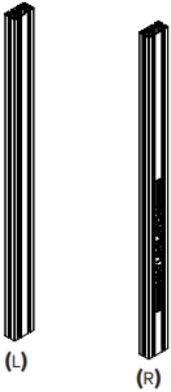
NOTE: Some Items Come with Rust Resistant Coating



1 x Main Cross Member 40x80



2 x Extension Arms 40x80



2 x Vertical Members 40x80



2 x Base Members 40x80



8 x Cable Clips



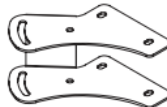
1 x Spanner



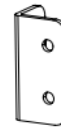
Allen Keys



58 x M8 Washers



2 x Angle Brackets



2 x Corner Plates



4 x 85mm Bolts



12 x 40x80 End Caps



8 x M8 Flange Nuts



2 x M8 100mm Bolts



12 x M6 Washers  
12 x M5 Washers  
12 x M4 Washers



38 x T-Nuts



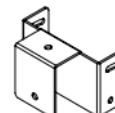
2 x Extended Vesa Mount Front



2 x Extended Vesa Mount Back



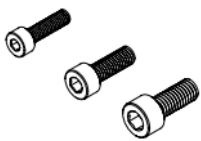
2 x Vesa Mount Front



2 x Vesa Mount Back



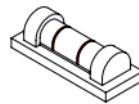
6 x Felt Pads  
(40mm x 35mm x 5mm)



12 x M6 15mm Bolts  
12 x M5 15mm Bolts  
12 x M4 15mm Bolts



42 x M8 16mm Bolts



1 x Spirit Level



4 x M8 40mm Bolts  
4 x M8 50mm Bolts



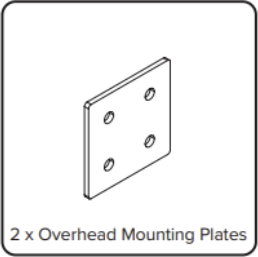
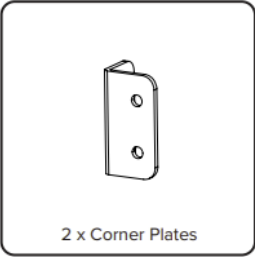
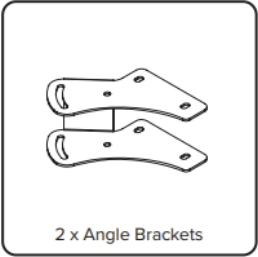
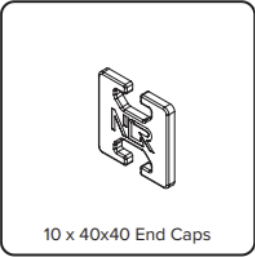
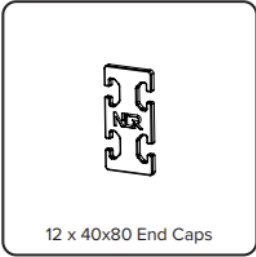
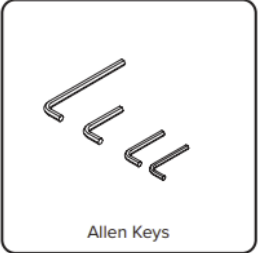
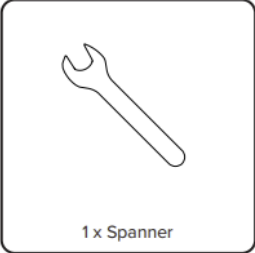
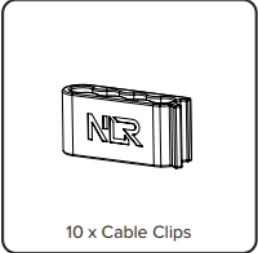
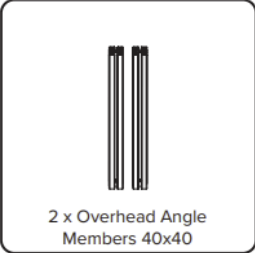
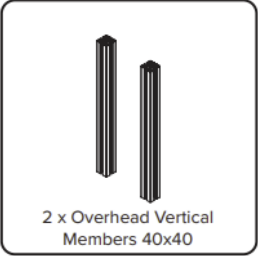
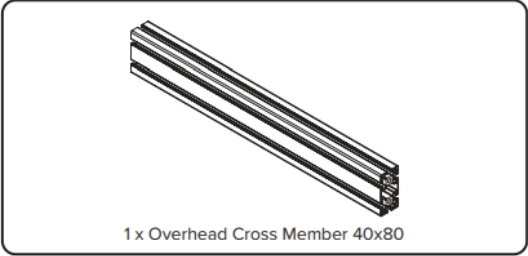
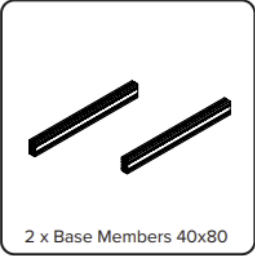
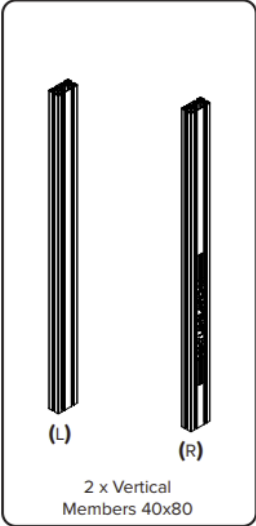
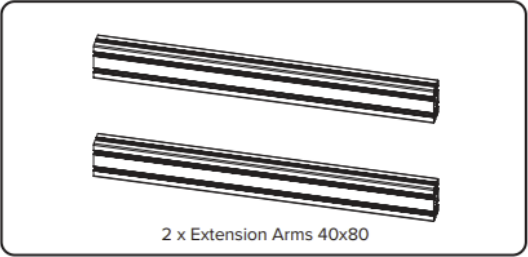
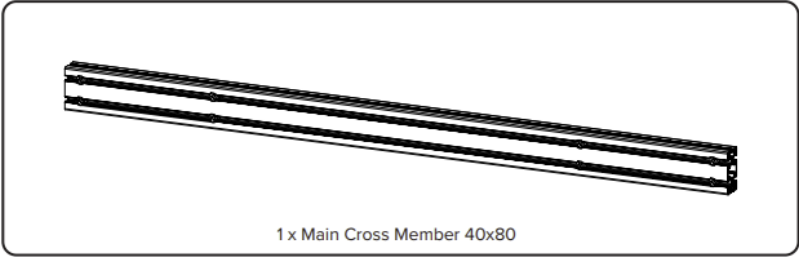
4 x Monitor Spacer



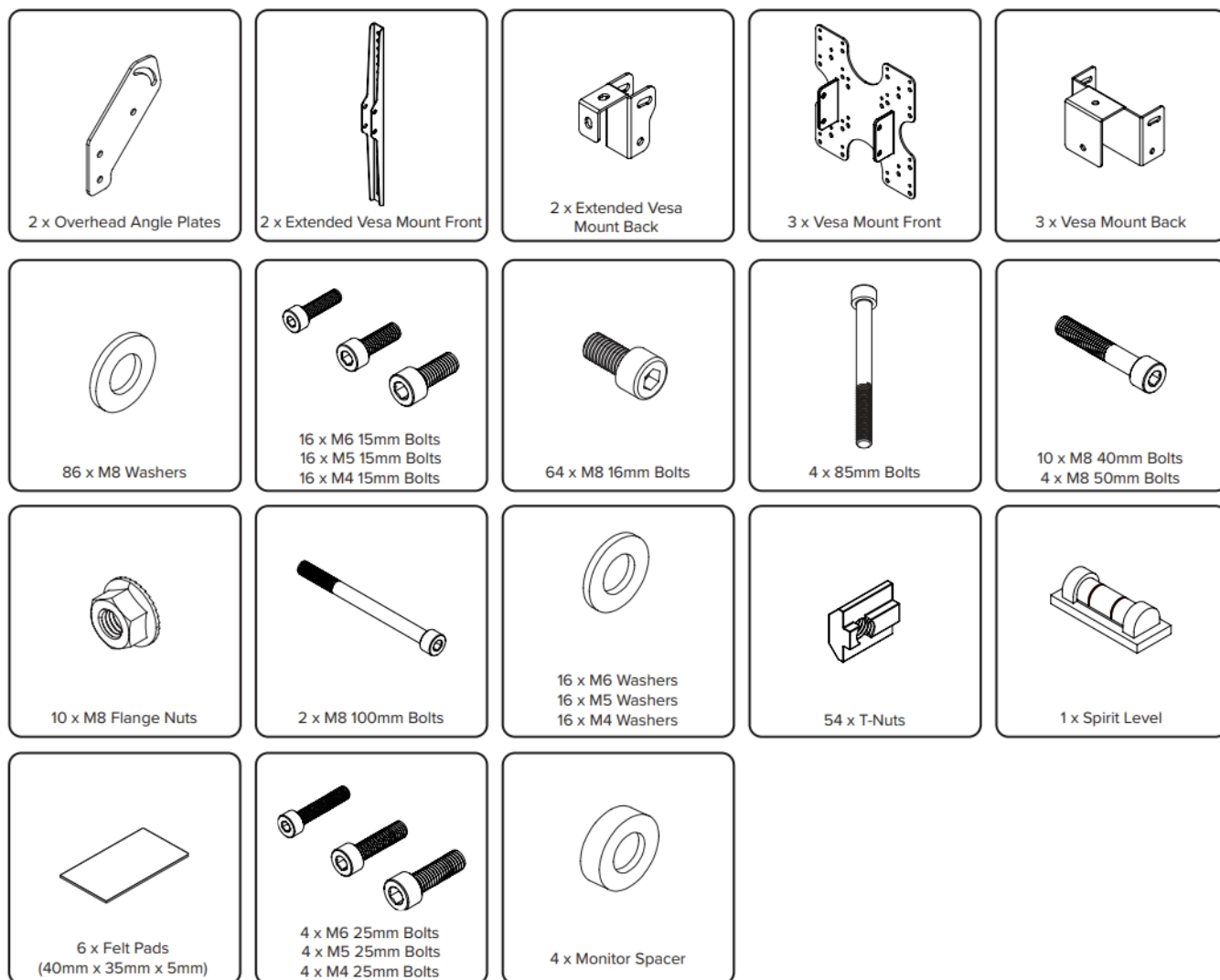
4 x M6 25mm Bolts  
4 x M5 25mm Bolts  
4 x M4 25mm Bolts

## QUAD COMPLETE MONITOR STAND

NOTE: Some Items Come with Rust Resistant Coating



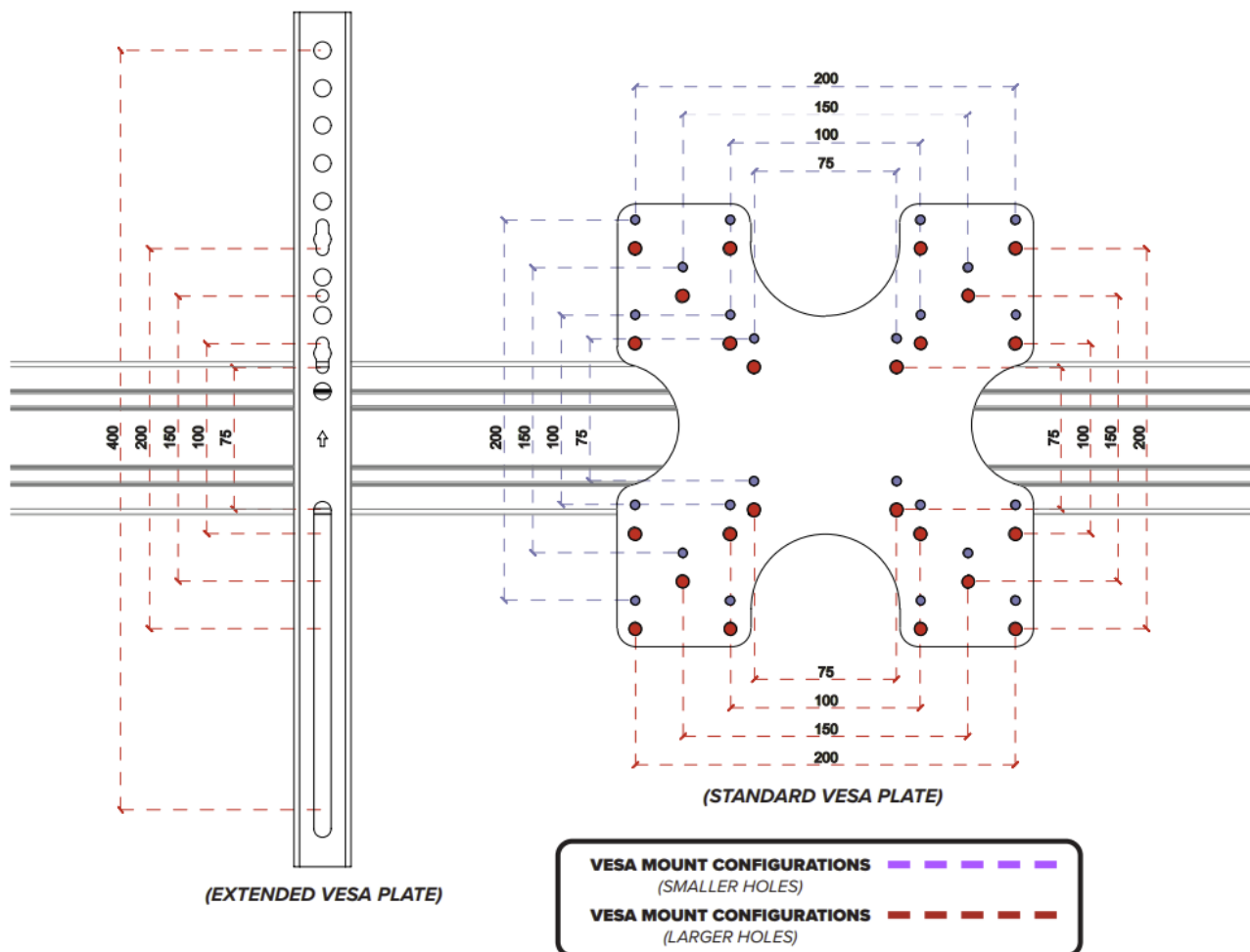




## INSTALLATION

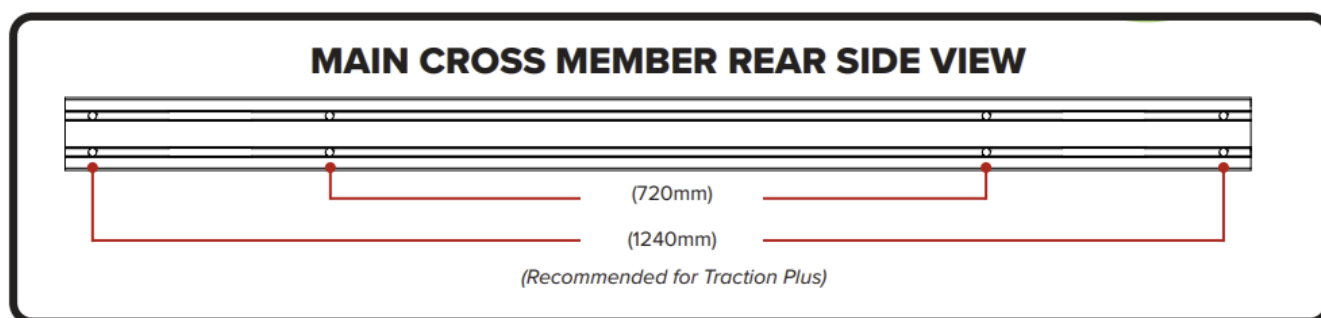
### SINGLE FREE STANDING MONITOR STAND

### VESA MOUNT CONFIGURATIONS



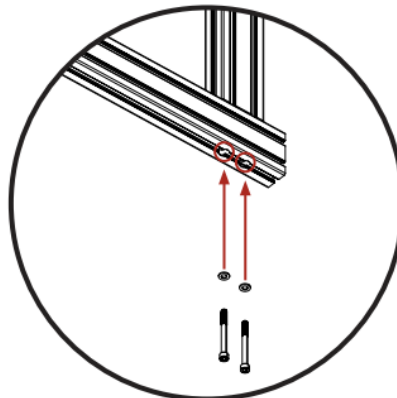
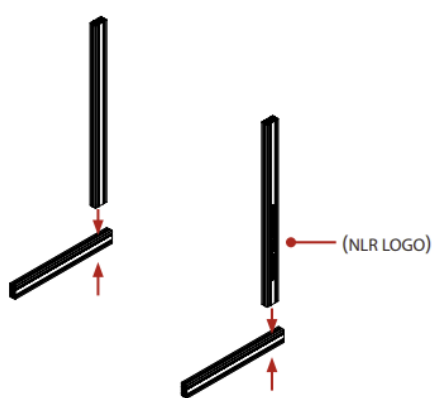
NOTE: If setting up a Triple / Overhead monitor setup please ensure the mounting holes (Marked in RED) on the Standard Vesa Plate are aligned with the mounting holes on the Extended Vesa Bracket to align your screens.

## MAIN CROSS MEMBER REAR SIDE VIEW



NOTE: Before assembling the Monitor Stand check the width of your cockpit setup and choose the suitable mounting holes on the Main Cross Member.

1. Align the through holes on the Base Members with the threaded holes on the Vertical Members. Bolt through and secure with 4 x M8 Bolts and Washers.



#### PARTS:

• 2 x Vertical Members 40x80

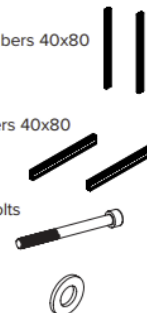
• 2 x Base Members 40x80

• 4 x M8 85mm Bolts

• 4 x M8 Washers

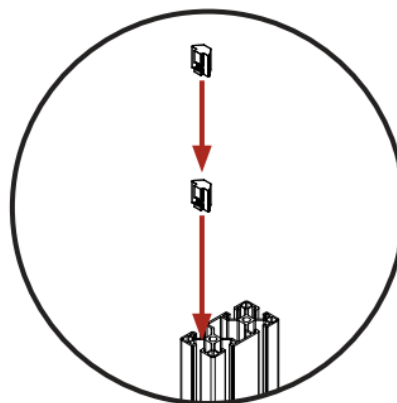
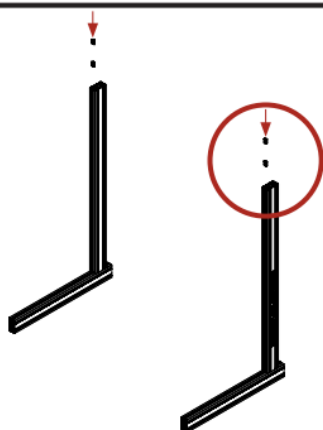
#### TIPS:

Upright 40x80 pieces have threaded holes for easy installation.  
Be careful not to cross thread during installation.



**01**

Align the through holes on the Base Members with the threaded holes on the Vertical Members. Bolt through and secure with 4 x M8 Bolts and Washers.



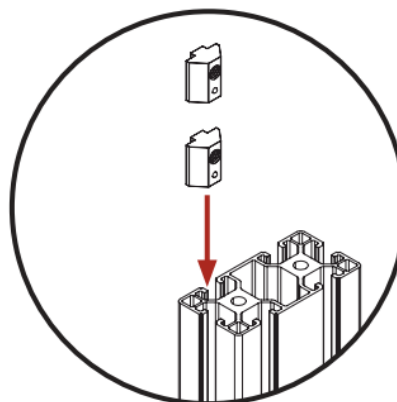
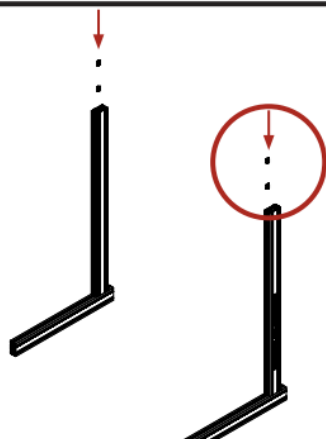
#### PARTS:

• 4 x T-Nuts



**02**

Install 2 x T-Nuts into the front channel of each Vertical Member as shown.



#### PARTS:

• 4 x T-Nuts



**03**

Install 2 x T-Nuts into the inner front channel of each Vertical Member as shown.

**NOTE:** Do not install the Overhead Member T-Nuts if not required.

**MAIN CROSS MEMBER REAR VIEW**

Top Channel

2 x T-Nuts for the Left Vertical Member

2 x T-Nuts for the Overhead Vertical Member

2 x T-Nuts to the middle for the Vesa Mount

2 x T-Nuts for the Overhead Vertical Member

2 x T-Nuts for the Right Vertical Member

**PARTS:**

- 1 x Main Cross Member
- 12 x T-Nuts

**TIPS:**

Red dots indicate general T-Nuts positioning.

Counterbore holes in Main Cross member to be on the front. The T-Nuts should be installed on the opposite side.

**04**

Install 12 x T-Nuts into the Main Cross Member as shown.

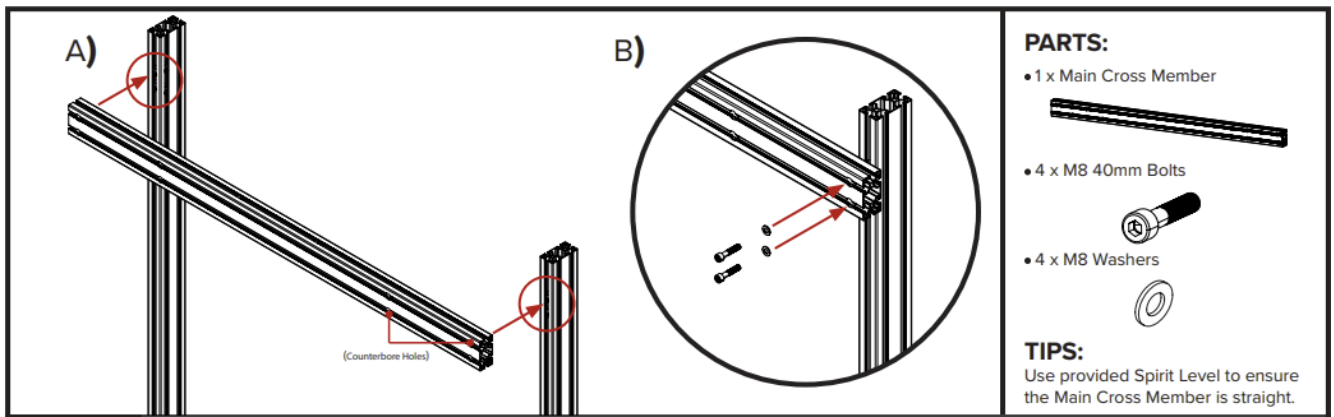
**PARTS:**

- 4 x Felt Pads (40mm x 35mm x 5mm)

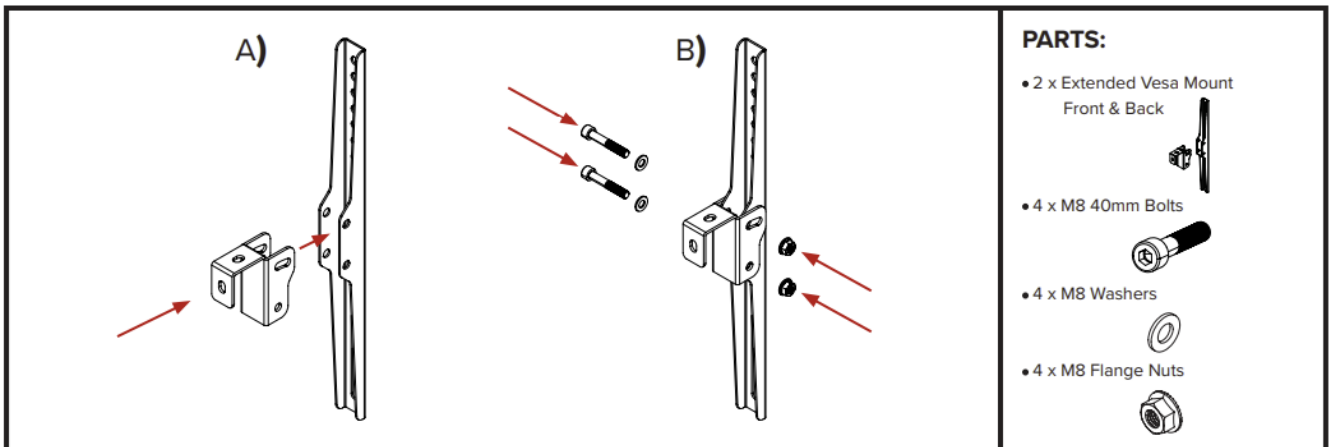
**05**

Install 4 x Felt Pads onto the bottom ends of both Base Members.

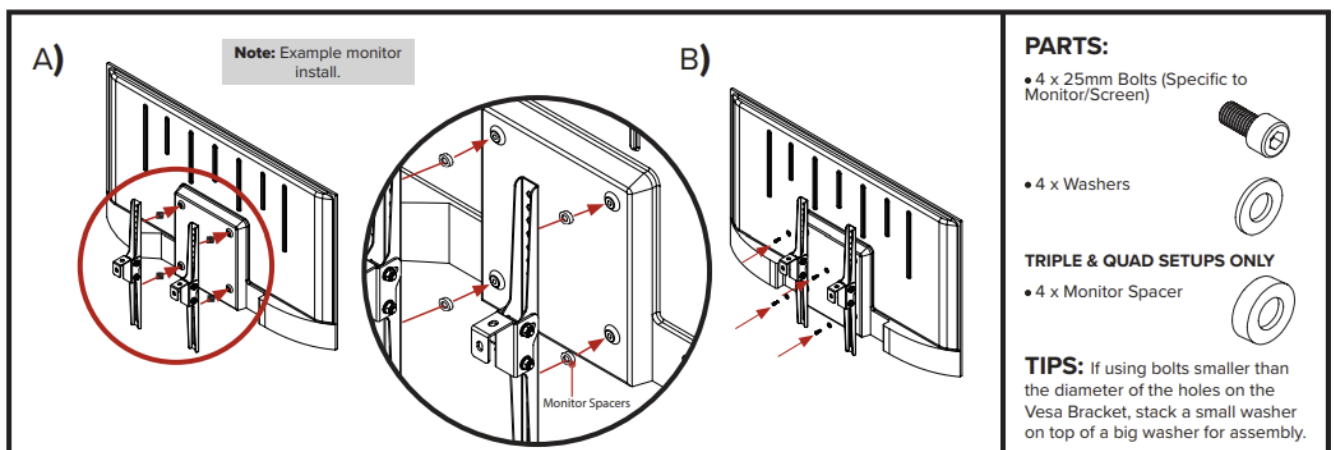
- 6 A) Choose the Main cross-member mounting holes suitable for your cockpit setup and align them with the T-Nuts previously installed in Step 02.
- B) Bolt through and secure with 4 x M8 Bolts and Washers.



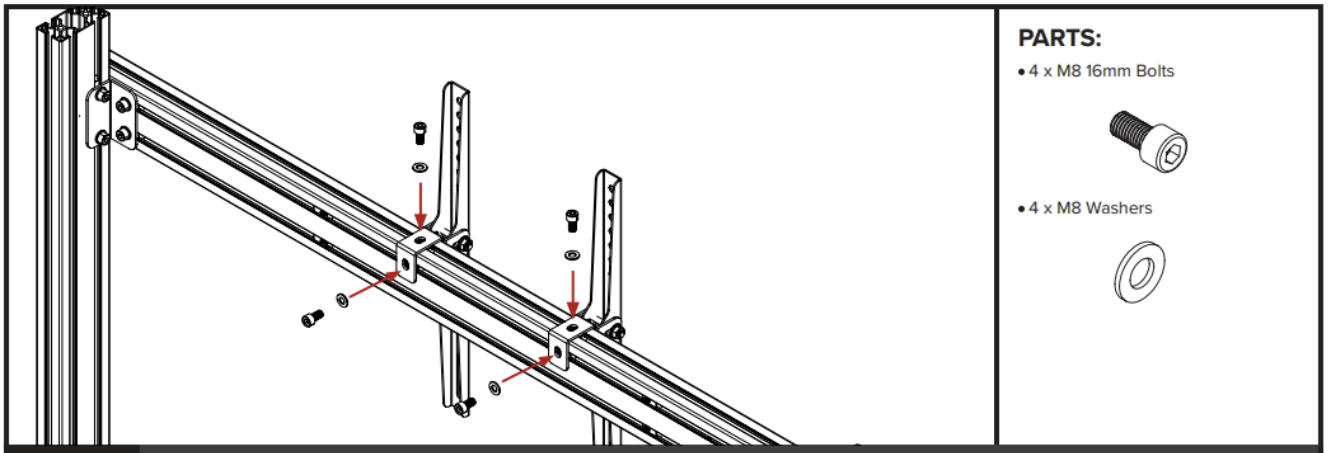
- 7 Align the Corner Plates with the T-Nuts previously installed in Step 03 and 04. Bolt through and secure with 8 x M8 Bolts and Washers.
- 8a A) Align the holes on the Extended Vesa Mount Back with the holes on the Extended Vesa Mount Front.  
B) Bolt through and secure using 2 x M8 Bolts, Washers, and Flange Nuts. Repeat for the other Vesa assembly.



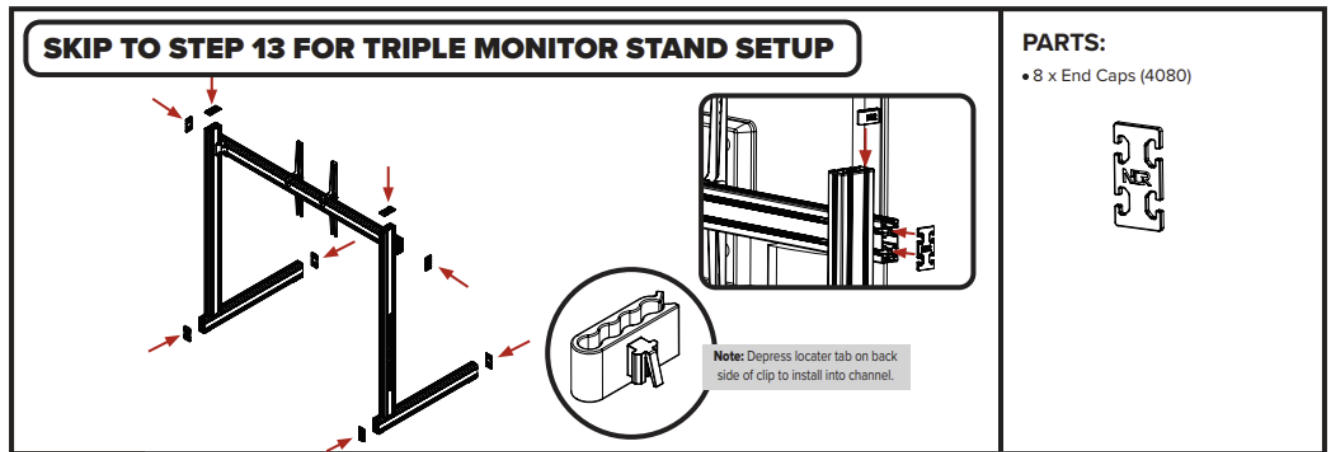
- 8b A) Align the Vesa Assembly holes with the mounting holes on the Monitor. If installing Triple/Quad monitors, place 4 x Monitor Spacers between the Extended Vesa Mounts and monitor.  
B) Bolt through and secure with the monitor's specified hardware.



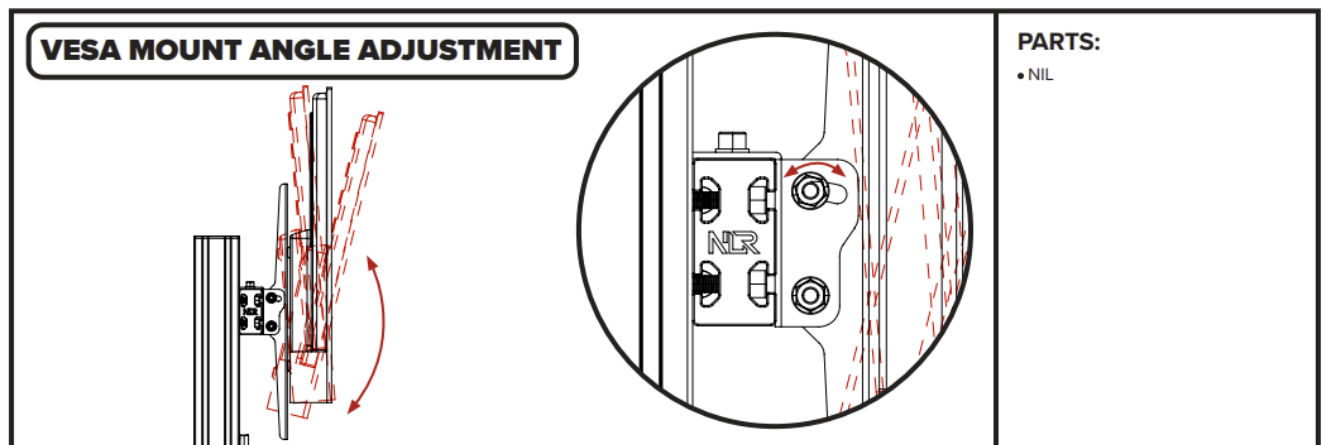
- 9 Align the holes on the mounted Vesa Assemblies with T-Nuts previously installed in Step 04. Bolt through and secure the top and rear with 4 x M8 Bolts and Washers.



- 10 Install Cable Management clips where necessary and Install End Caps onto the Main Cross Member, Base Members and Vertical Members.

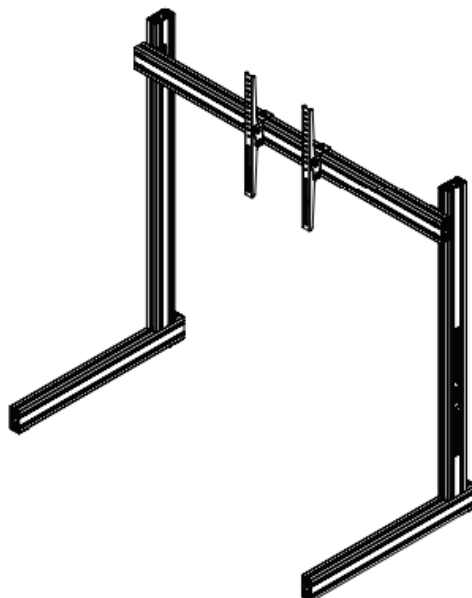


- 11 Loosen the Bolts securing the Extended Vesa Mount Back to the Extended Vesa Mount Front. Adjust to the desired angle and tighten the Bolts to lock in place.

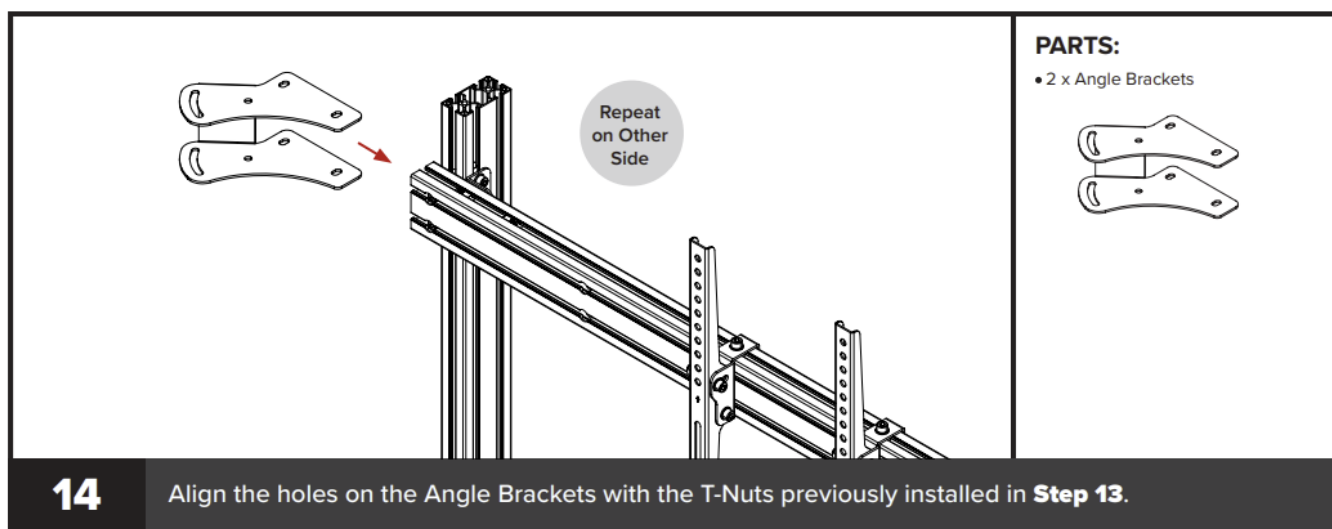
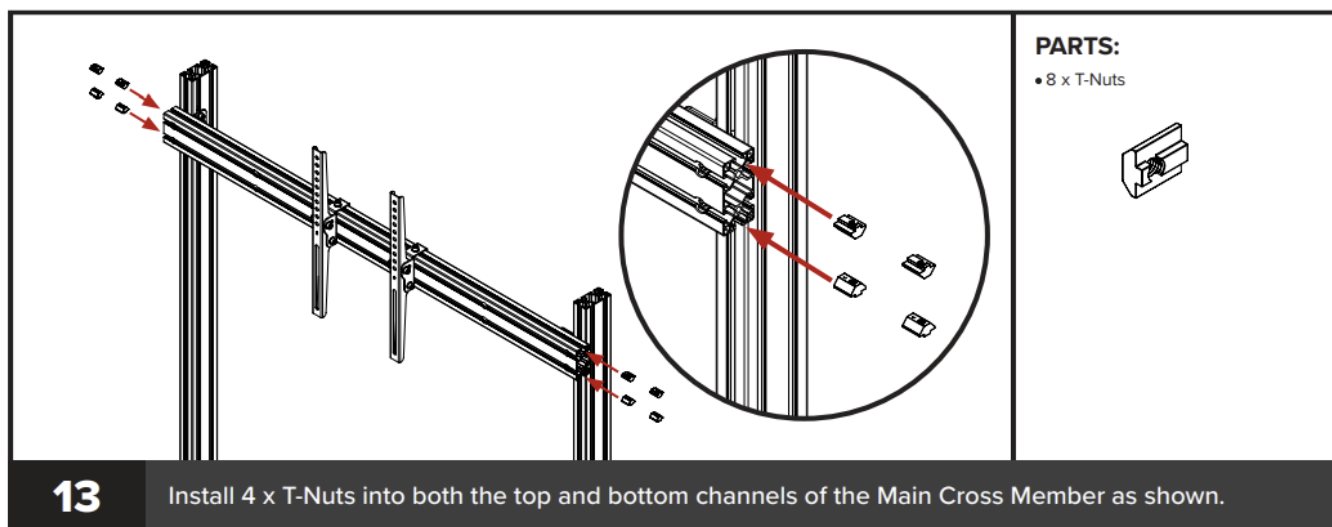


- 12 Loosen the Bolts securing the Main Cross Member and Corner Plates to the Vertical Members. Adjust to the desired height and tighten the Bolts to lock in place.

**SINGLE MONITOR STAND IS COMPLETE. TO INSTALL TRIPLE MONITORS, PLEASE CONTINUE.**

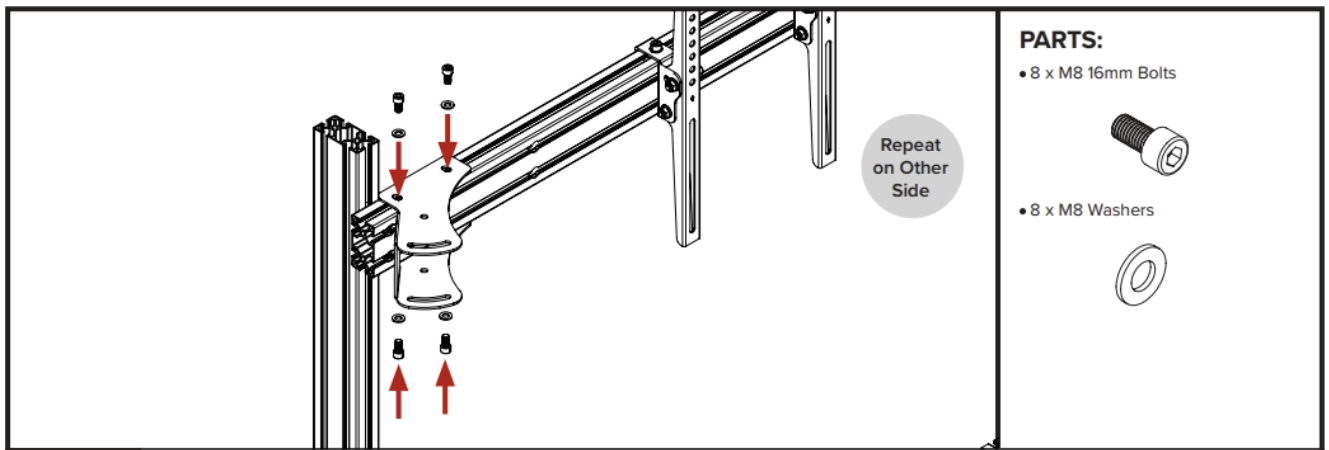


## TRIPLE MONITOR SETUP

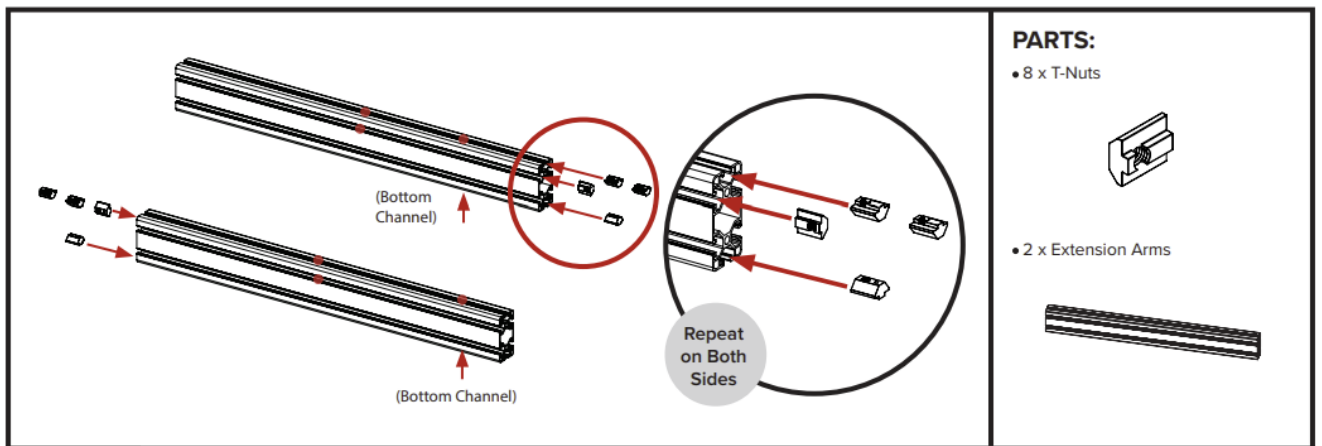


- 15 Bolt through and secure using 8 x M8 Bolts and Washers.



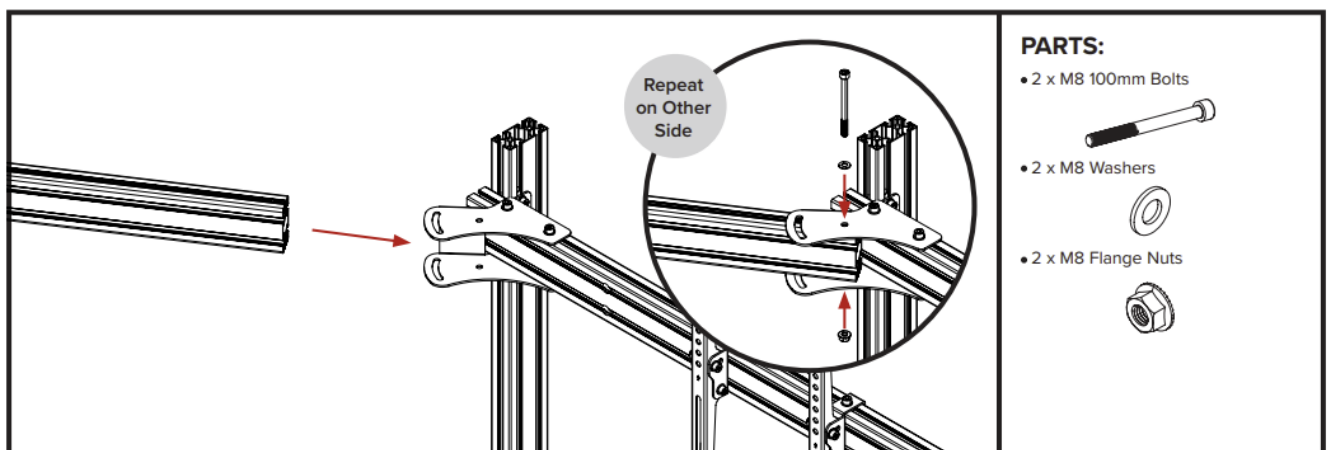


- Install 2 x T-Nuts into the top channel, 1 x T-Nut into the bottom channel and 1 x T-Nut in the rear upper channel of each Extension Arm.



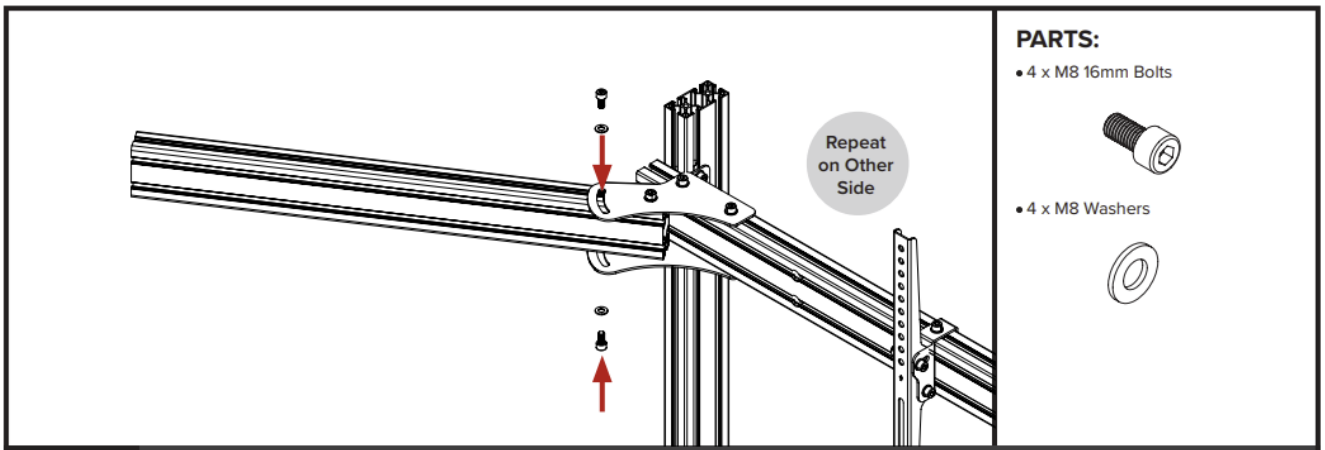
- 17 A) Align the through holes on the Extension Arms with the holes on the Angle Brackets.

B) Bolt through and secure with 2 x M8 Bolts, Washers and Flange Nuts.

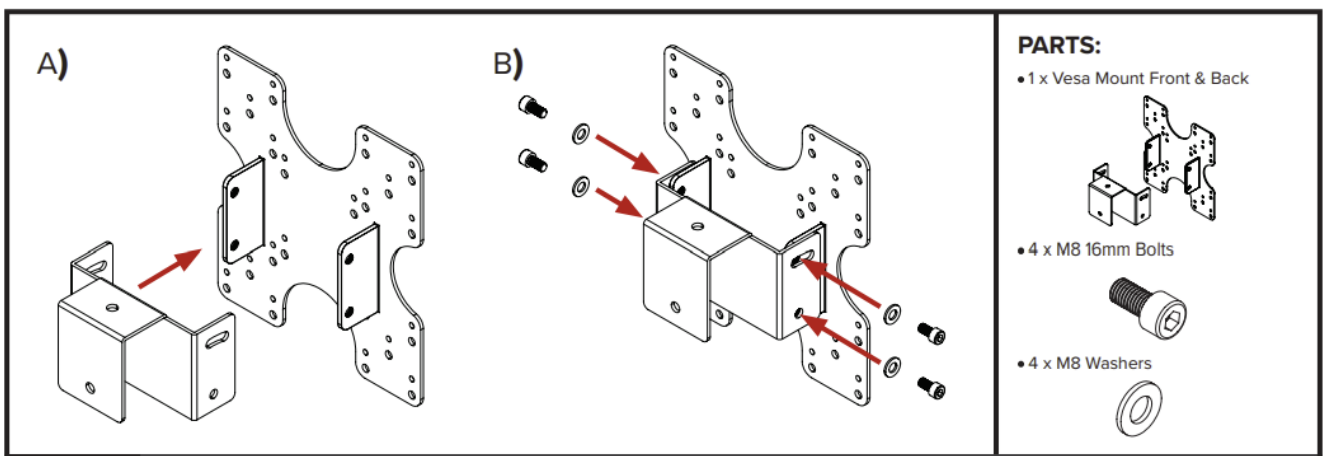


- Align the Angle Brackets adjustment slots with the T-Nuts previously installed in Step 16. Bolt through and secure with 2 x M8 Bolts and Washers. Repeat on other side.

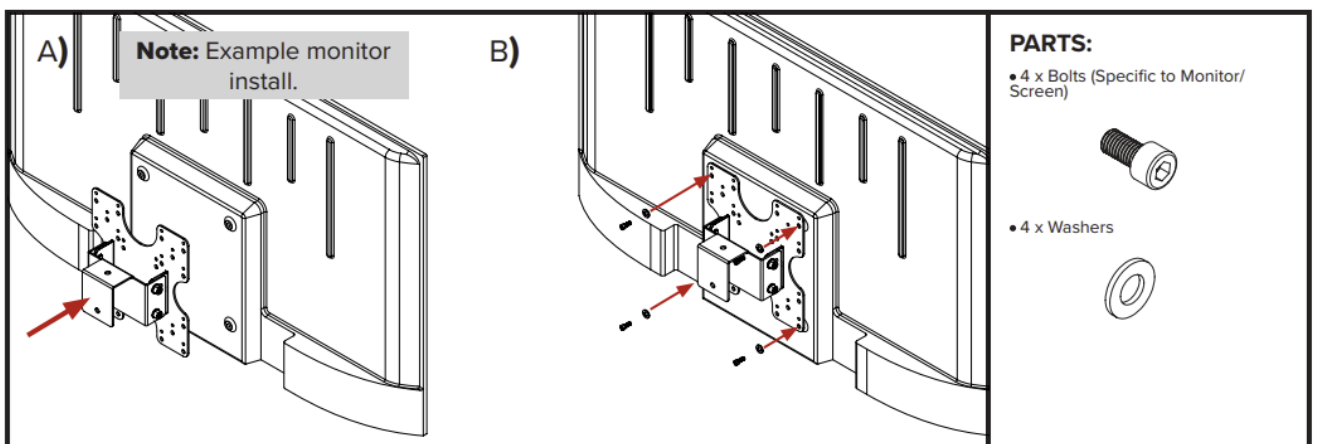




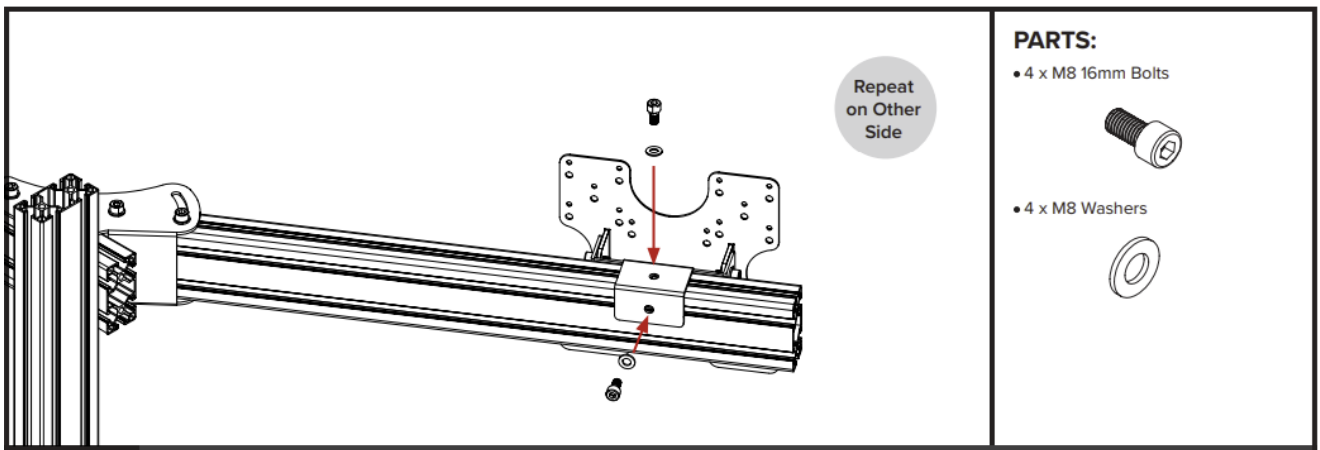
- 19a A) Align the holes on the Vesa Mount Back with the threaded holes on the Vesa Mount Front.
- B) Bolt through and secure with 4 x M8 Bolts and Washers.



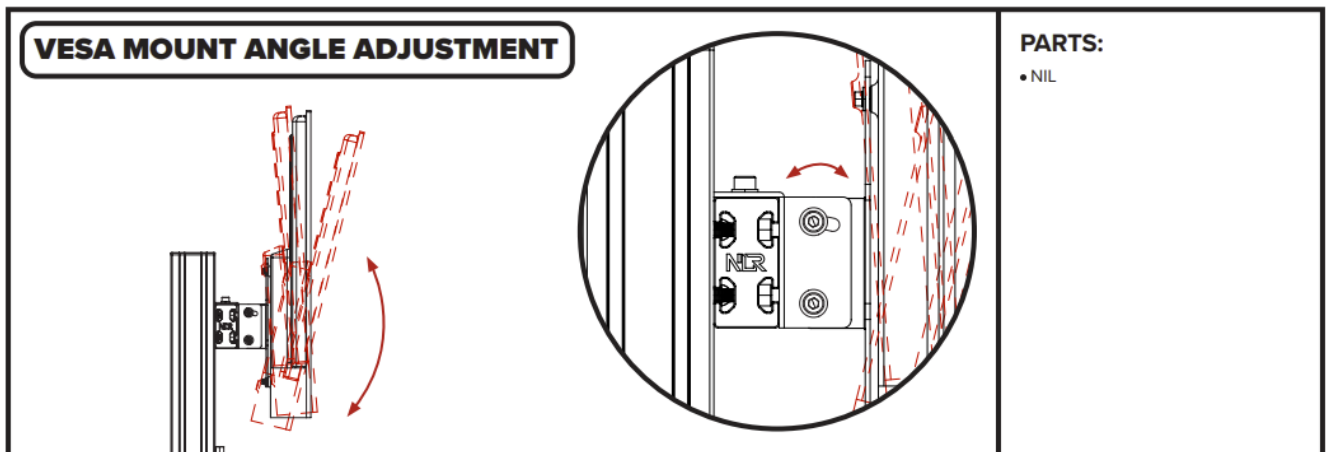
- 19b A) Align the Vesa Assembly holes with the mounting holes on the Monitor.
- B) Bolt through and secure using the monitor's appropriate hardware.



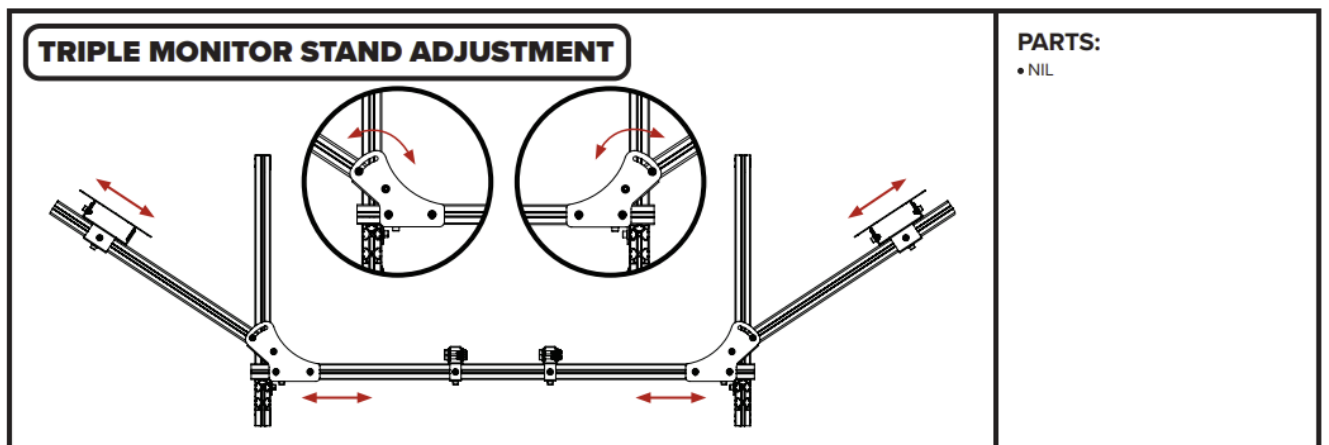
- 20 Align the holes on the Vesa Assemblies with T-Nuts previously installed in Step 16. Bolt through and secure with 2 x M8 Bolts and Washers per side.



- 21 Loosen the bolts securing the Vesa Mount Front to the Vesa Mount Back. Adjust to the desired angle and tighten bolts to secure in place.

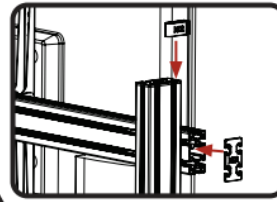
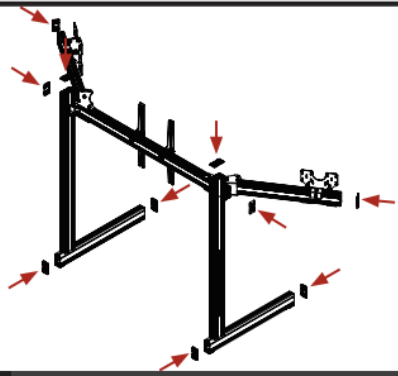


- 22 Loosen the Bolts securing; the Vesa Mount assemblies to the Extension Arms, the Extension Arms to the Angle Brackets, and the Angle Brackets to the Main Cross Member. Adjust to the desired position and tighten the Bolts to lock in place.



- 23 Install Cable Management clips where necessary and Install End Caps onto the Main Cross Member, Base Members, Vertical Members and Extension Arms.

**SKIP TO STEP 24 FOR OVERHEAD MONITOR STAND SETUP**



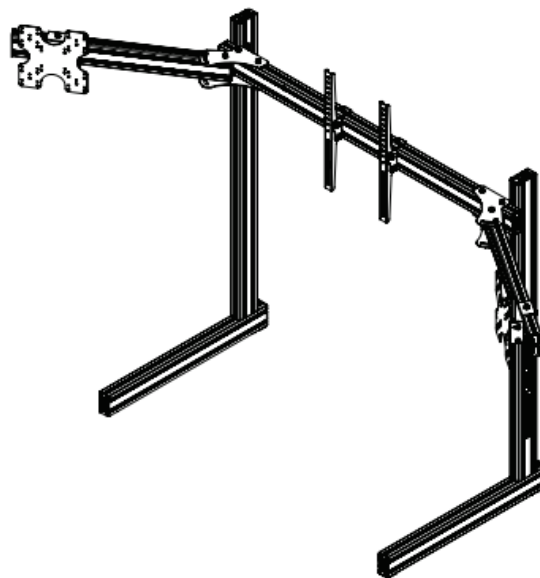
**Note:** Depress locator tab on back side of clip to install into channel.

**PARTS:**

- 10 x End Caps (4080)

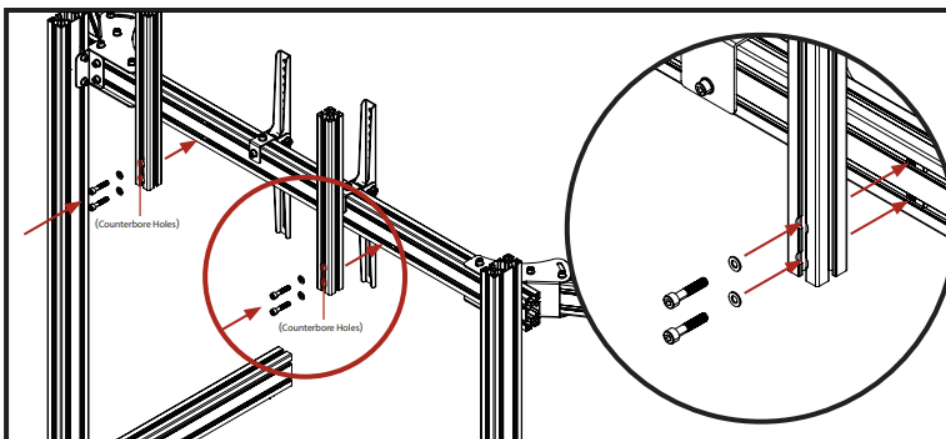


**TRIPLE MONITOR STAND IS COMPLETE. TO INSTALL THE OVERHEAD MONITOR, PLEASE CONTINUE.**



**OVERHEAD MONITOR SETUP**

- 24 Align the holes on the Overhead Vertical Members with the T-Nuts previously installed in Step 04.



**PARTS:**

- 2 x Overhead Vertical Members



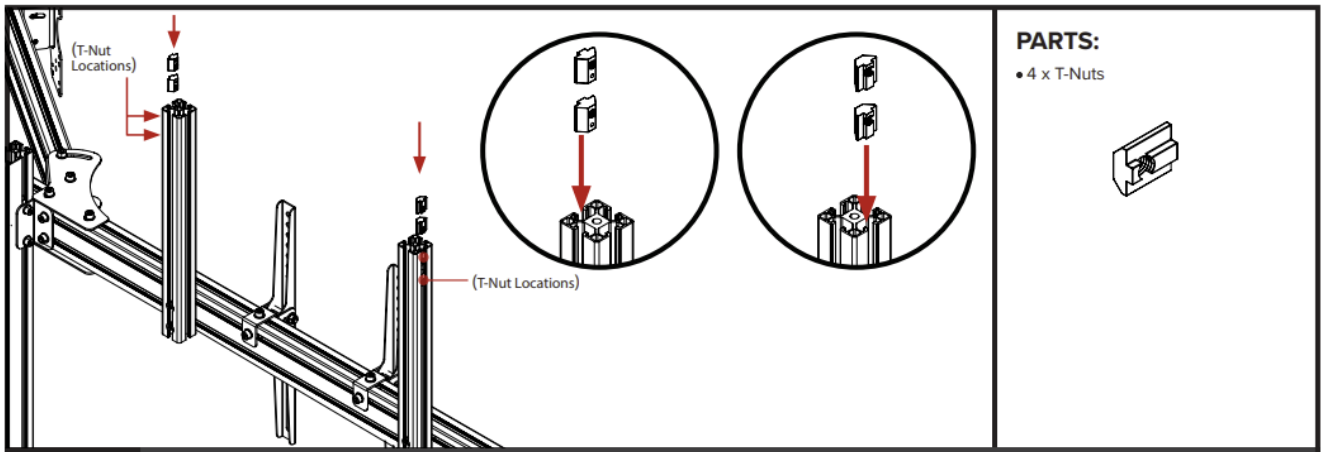
- 4 x M8 40mm Bolts



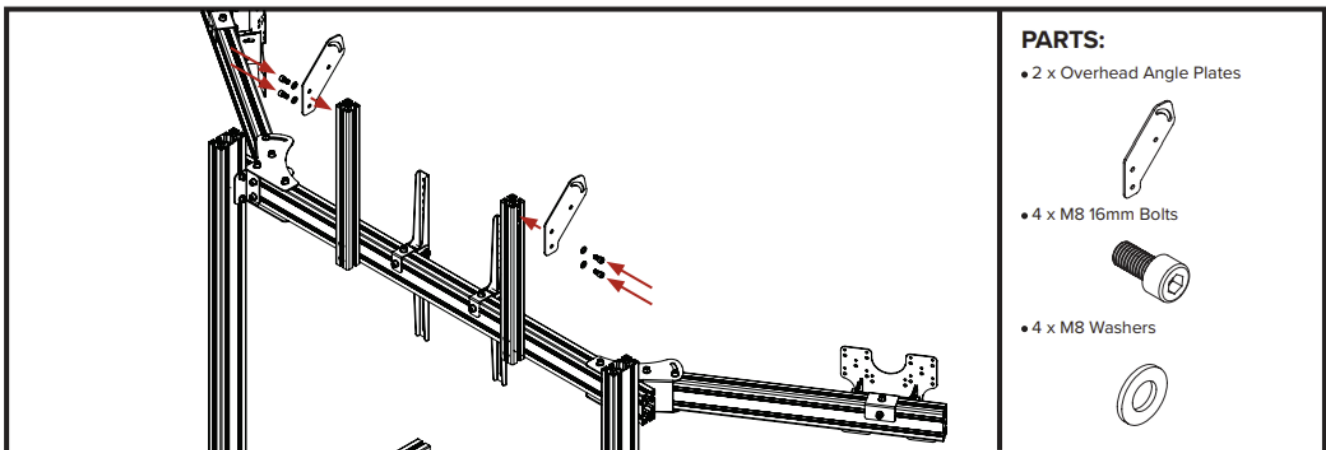
- 4 x M8 Washers



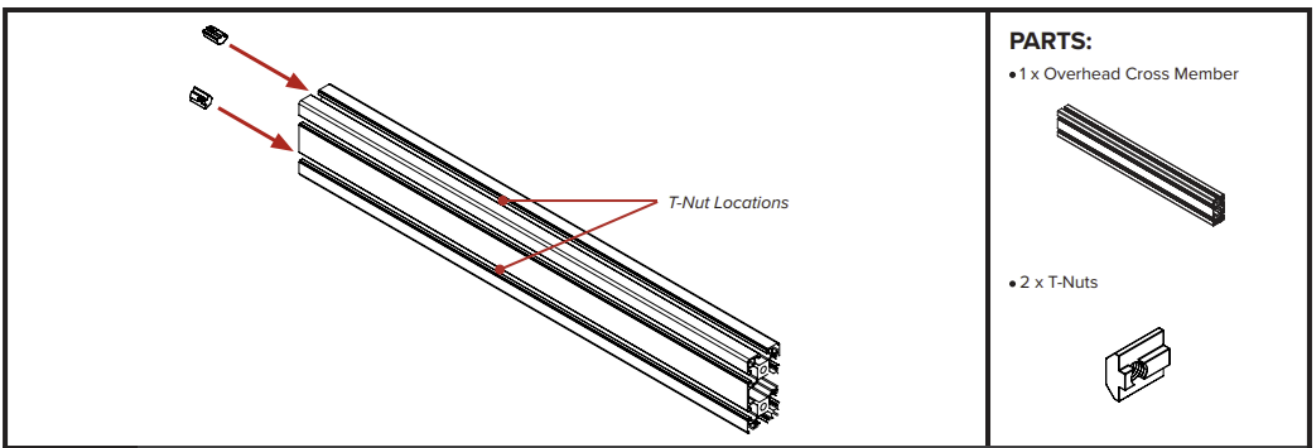
- 25 Install 2 x T-Nuts into the outer channel of both Overhead Vertical Members.



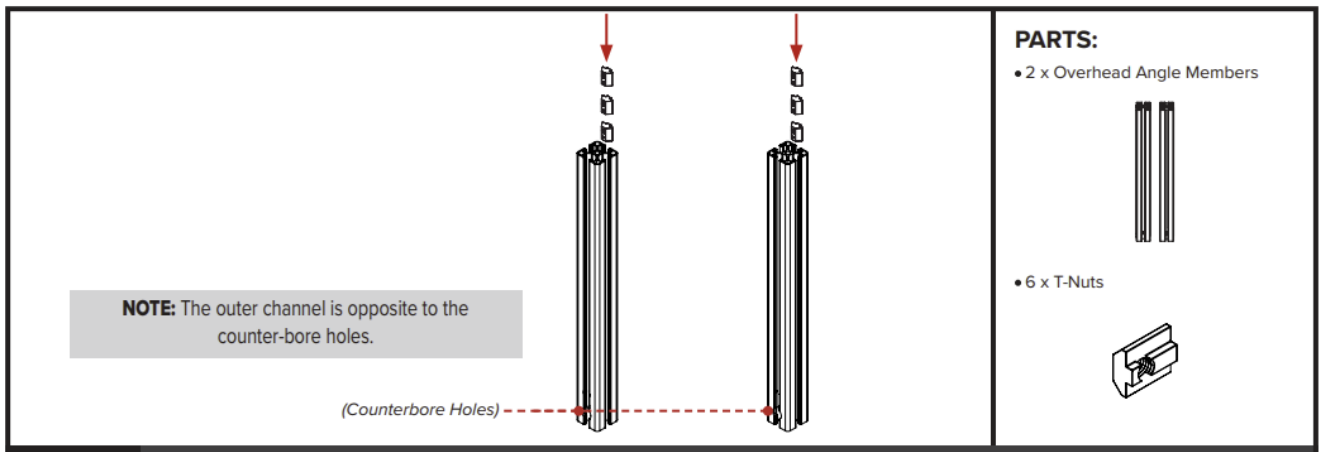
- 26 Align the holes on the Overhead Angle Plates with the T-Nuts previously installed in Step 25. Bolt through and secure using 4 x M8 Bolts and Washers.



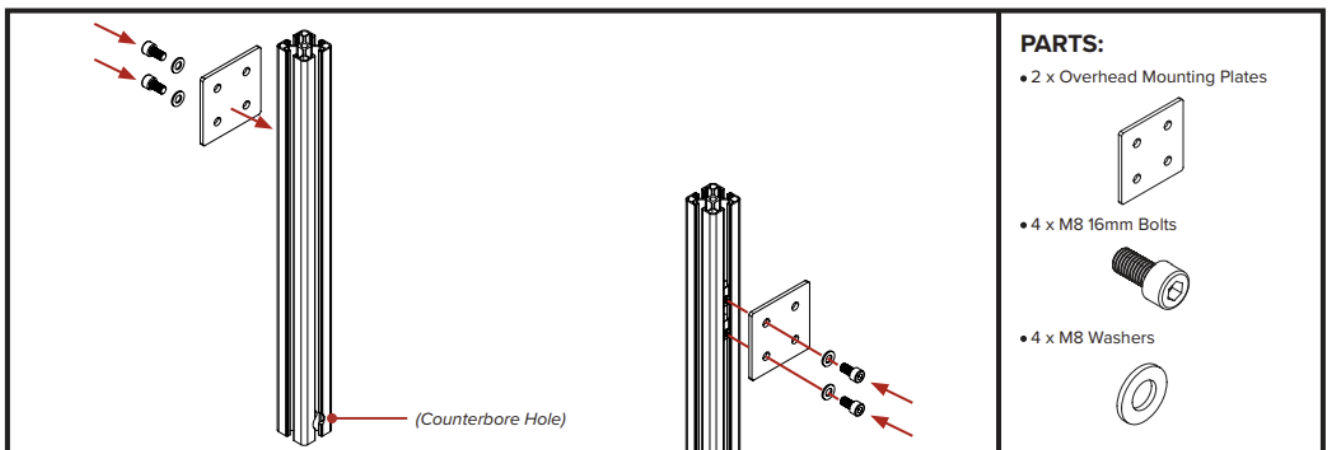
- 27a Install 1 x T-Nut into both the top and rear bottom channel of the Overhead Cross Member.



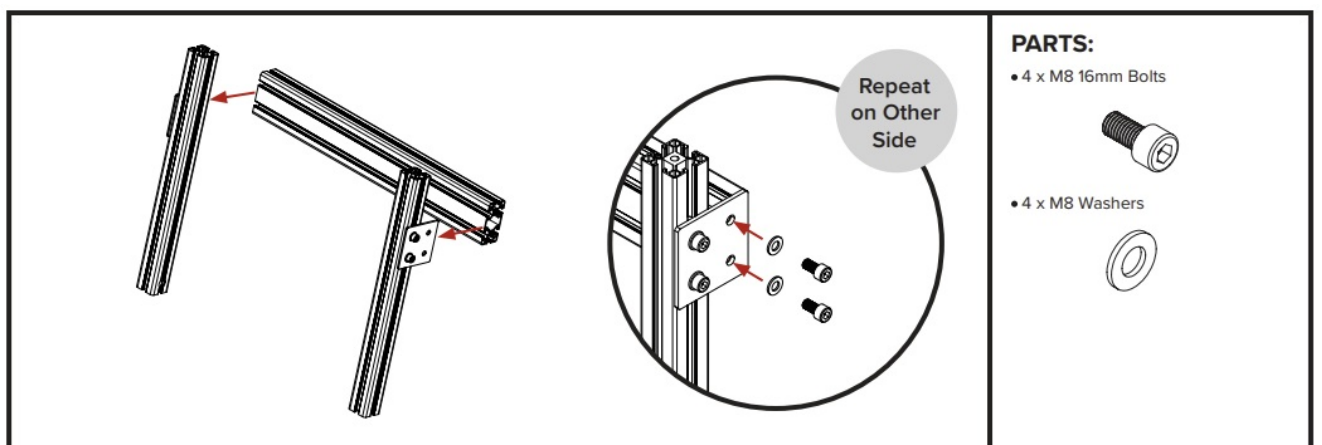
- 27b Install 3 x T-Nuts into the Outer Channels of both Overhead Angle Members.



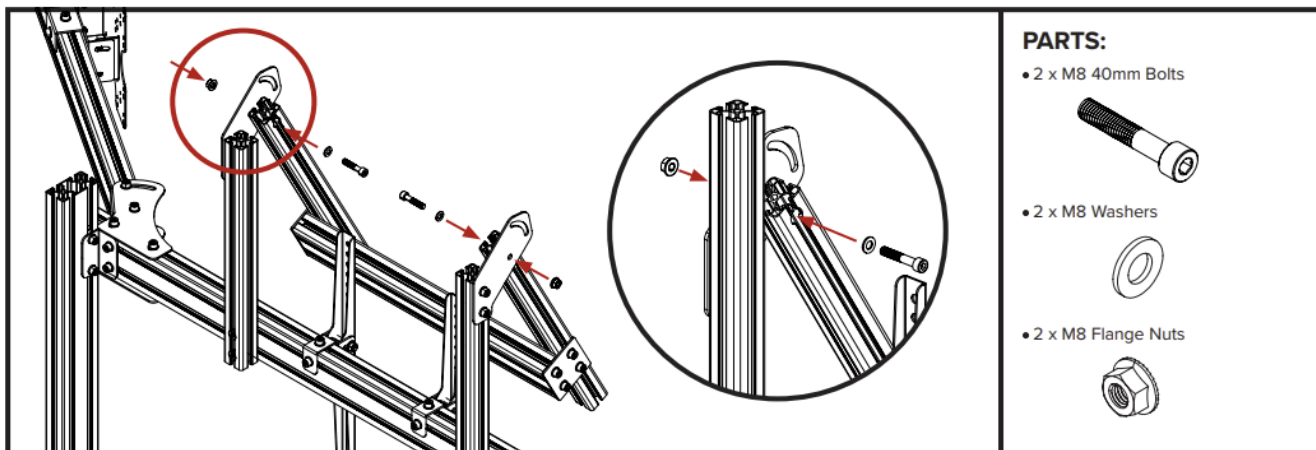
- 27c Align the holes on the Overhead Mounting Plates with the T-Nuts previously installed in Step 27b. Bolt through and secure using 4 x M8 Bolts and Washers.



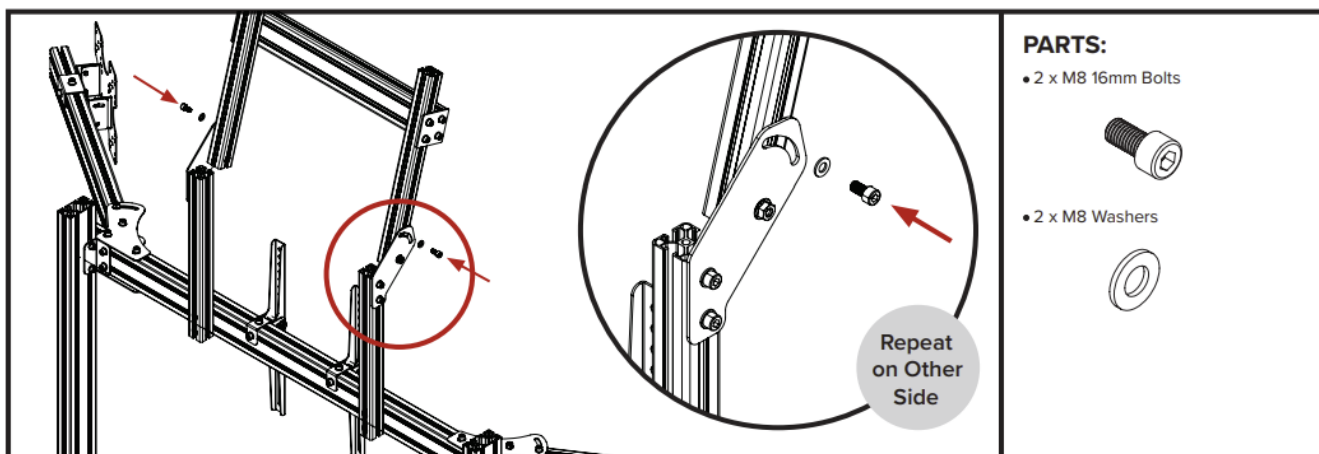
- 27d Align the threaded holes on the Overhead Cross Member ends with the holes on the Overhead Mounting Plates. Bolt through and secure using 2 x M8 Bolts and Washers.



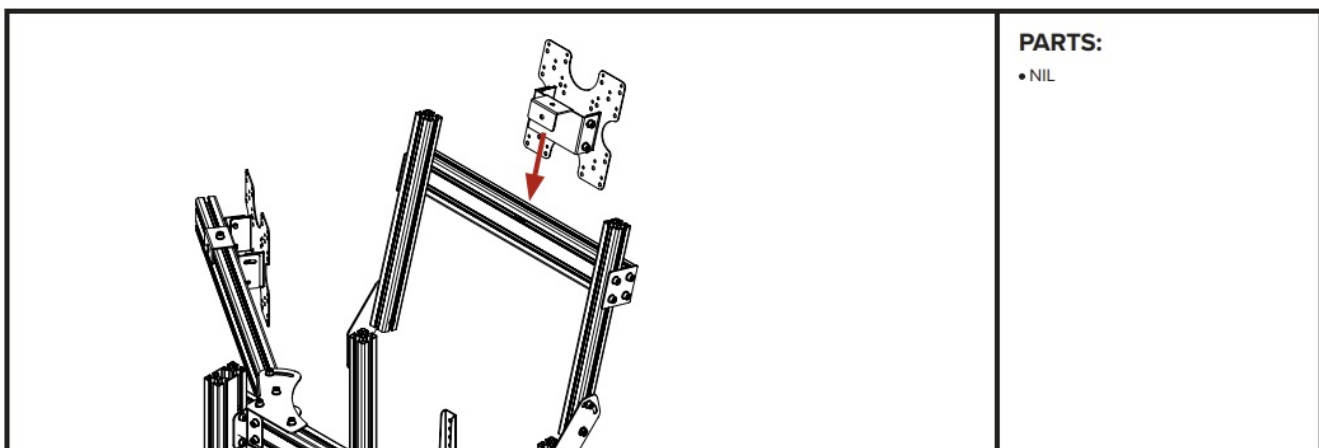
- 28 Align the through holes on the Overhead Angle Member Assembly with the holes on the Overhead Angle Plates. Bolt through and secure using 2 x M8 Bolts, Washers and Flange Nuts.



- 29 Align the T-Nuts previously installed in Step 27b with the slots on the Overhead Angle Plates. Bolt through and secure using 2 x M8 Bolts and Washers.

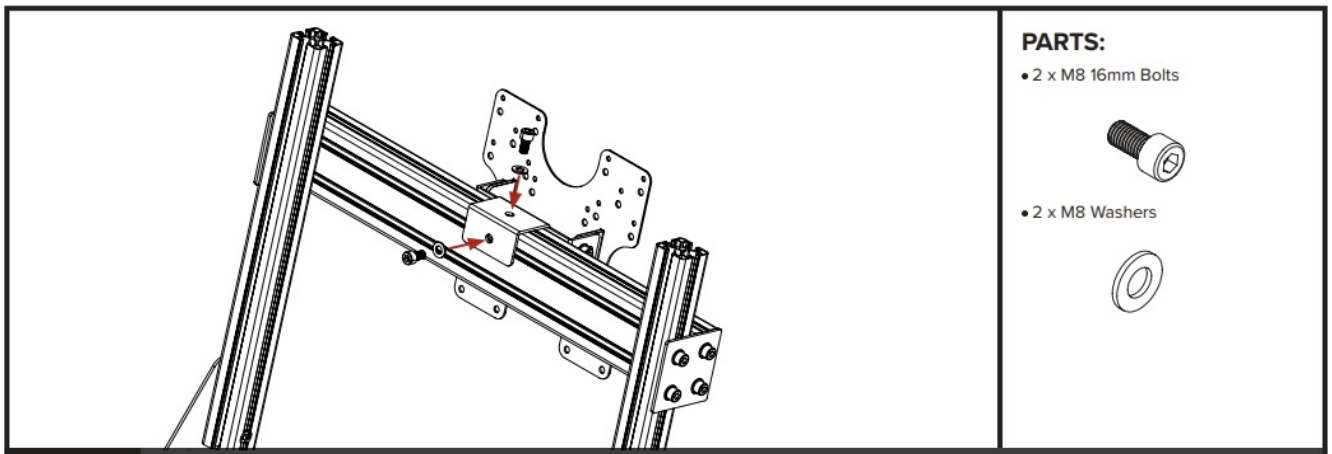


- 30 Install the Vesa Mount to a Monitor/Screen (Refer to Steps 19a and 19b). Align the holes on the Vesa Mount Assembly with the T-Nuts previously installed in Step 27a.

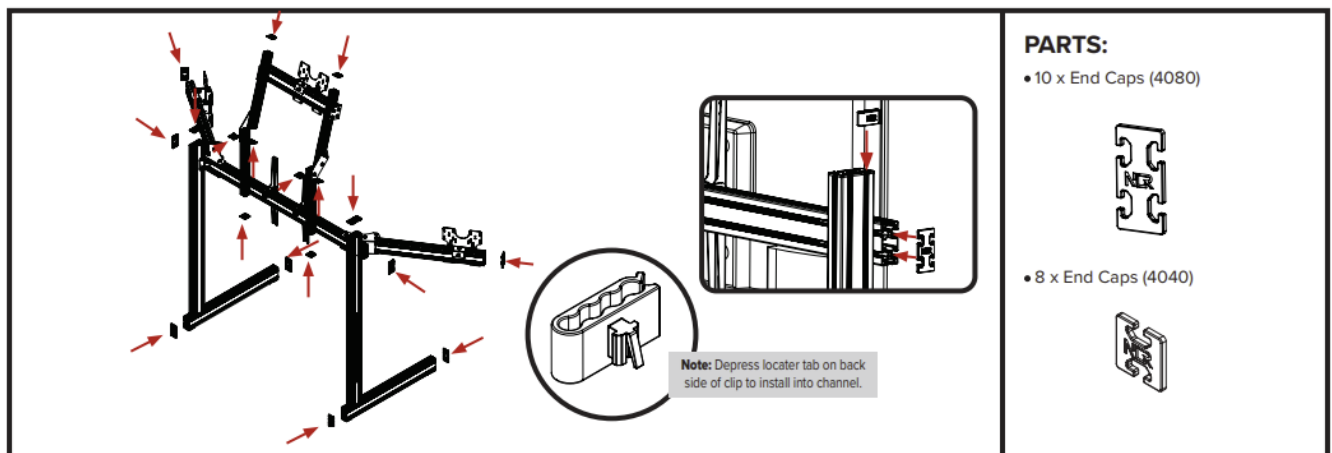


- 31 Bolt through and secure with 2 x M8 Bolts and Washers.

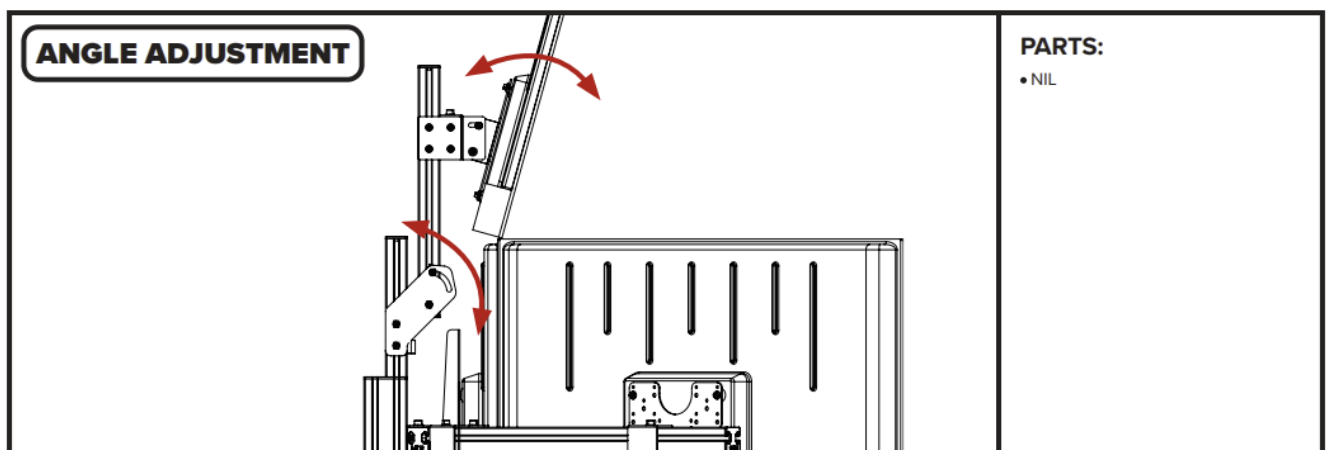




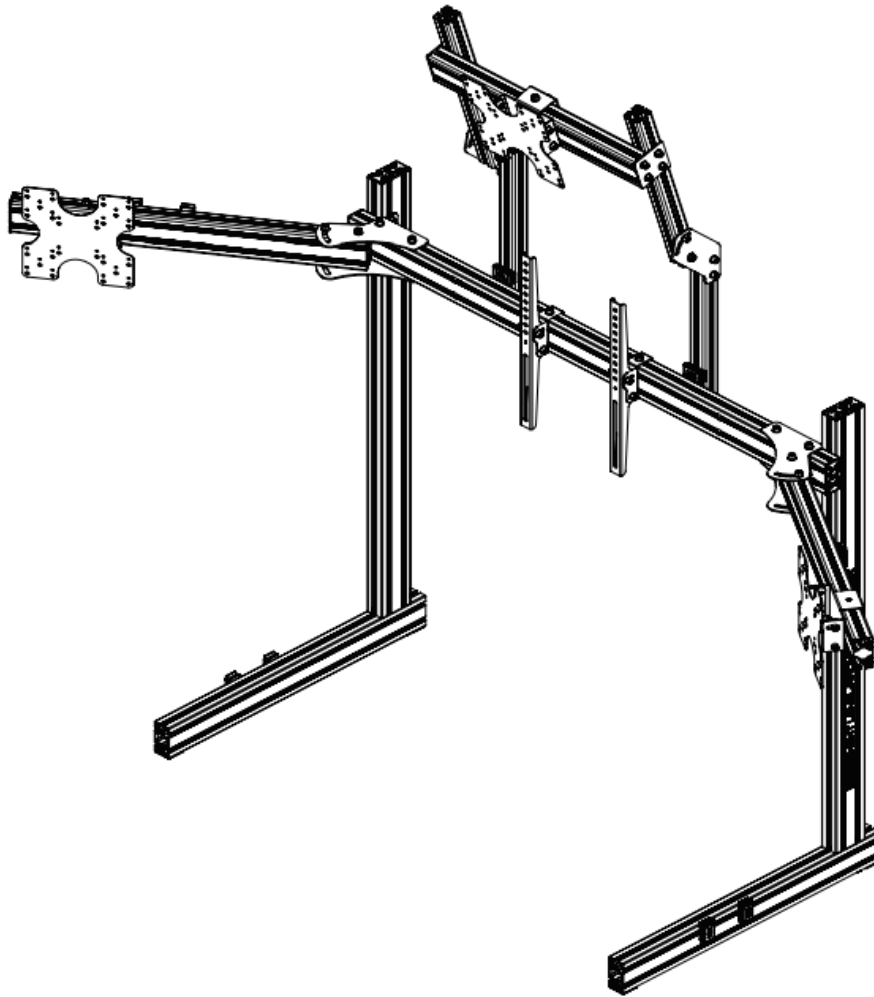
- 32 Install Cable Management clips where necessary and Install End Caps onto the Main Cross Member, Base Members, Vertical Members, Extension Arms, and Overhead Vertical and Angle Arms.



- 33 Loosen the Bolts securing the Overhead Angle Plate to the Overhead Angle Members. Adjust to the desired angle and tighten the bolts to secure in place.



- 34 A) Loosen the Bolts securing the Overhead Angle Plates to Overhead Vertical Members. Adjust to the desired height and tighten the bolts to secure in place.  
B) Loosen the Bolts securing the Overhead Mounting Plates to the Overhead Angle Members. Adjust to the desired height and tighten the Bolts to secure in place.



## **WARNING**

- Please do not use power tools for assembly as over tightening can damage your frame.
- Please ensure T-Nuts are correctly placed within the extrusion to prevent damaging parts.
- Lay out and build the Monitor Stand on a soft and protected level surface.
- Do not force parts together.
- Avoid cross threading threaded items.
- Do not hang additional loads on the monitor stand.
- Beware of sharp edges on extrusion pieces.
- Plan the placement of cable management clips at the beginning of your build.
- T-Nuts must be installed from the end of the profile and cannot be installed mid channel.

## **ASSISTANCE**





If you require further support with your product please contact our friendly team at:

[support@nextlevelracing.com](mailto:support@nextlevelracing.com)

- [bit.ly/nlrbuild](https://bit.ly/nlrbuild)
- [support@nextlevelracing.com](mailto:support@nextlevelracing.com)

## Frequently Asked Questions

- **Q: Is this stand compatible with monitors of all sizes?**
  - A: The stand is designed to accommodate standard monitor sizes. Please refer to the specifications for more details.
- **Q: Can I customize the stand for a different setup?**
  - A: While the stand is versatile, any modifications should be done with caution to maintain stability and safety.
- **Q: How do I adjust the angle of the monitors on the stand?**
  - A: The stand allows for some adjustments based on the mounting positions provided. Follow the manual for guidance on adjusting monitor angles.

## Documents / Resources

	<p><a href="#">next level RACING Elite Series Monitor Stand [pdf]</a> Instruction Manual</p> <p>Single, Triple, Overhead, Elite Series Monitor Stand, Elite Series, Monitor Stand, Stand</p>
---	--

## References

- [User Manual](#)

📁 next level

RACING

🔍 Elite Series, Elite Series Monitor Stand, Monitor Stand, next level RACING, Overhead, SINGLE, Stand, Triple

---

## Leave a comment

Your email address will not be published. Required fields are marked \*

Comment \*

Name

Email

Website

☐ Save my name, email, and website in this browser for the next time I comment.

**Post Comment**

**Search:**

e.g. whirlpool wrf535swhz

**Search**

[Manuals+](#) | [Upload](#) | [Deep Search](#) | [Privacy Policy](#) | [@manuals.plus](#) | [YouTube](#)

This website is an independent publication and is neither affiliated with nor endorsed by any of the trademark owners. The "Bluetooth®" word mark and logos are registered trademarks owned by Bluetooth SIG, Inc. The "Wi-Fi®" word mark and logos are registered trademarks owned by the Wi-Fi Alliance. Any use of

these marks on this website does not imply any affiliation with or endorsement.