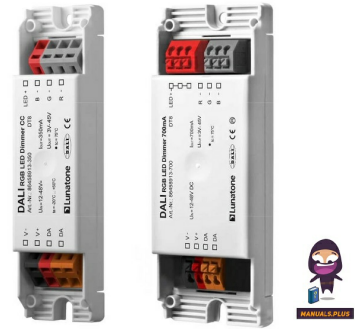


Next Design

# ETHICS LED Dimmer



## Next Design ETHICS LED Dimmer Instruction Manual

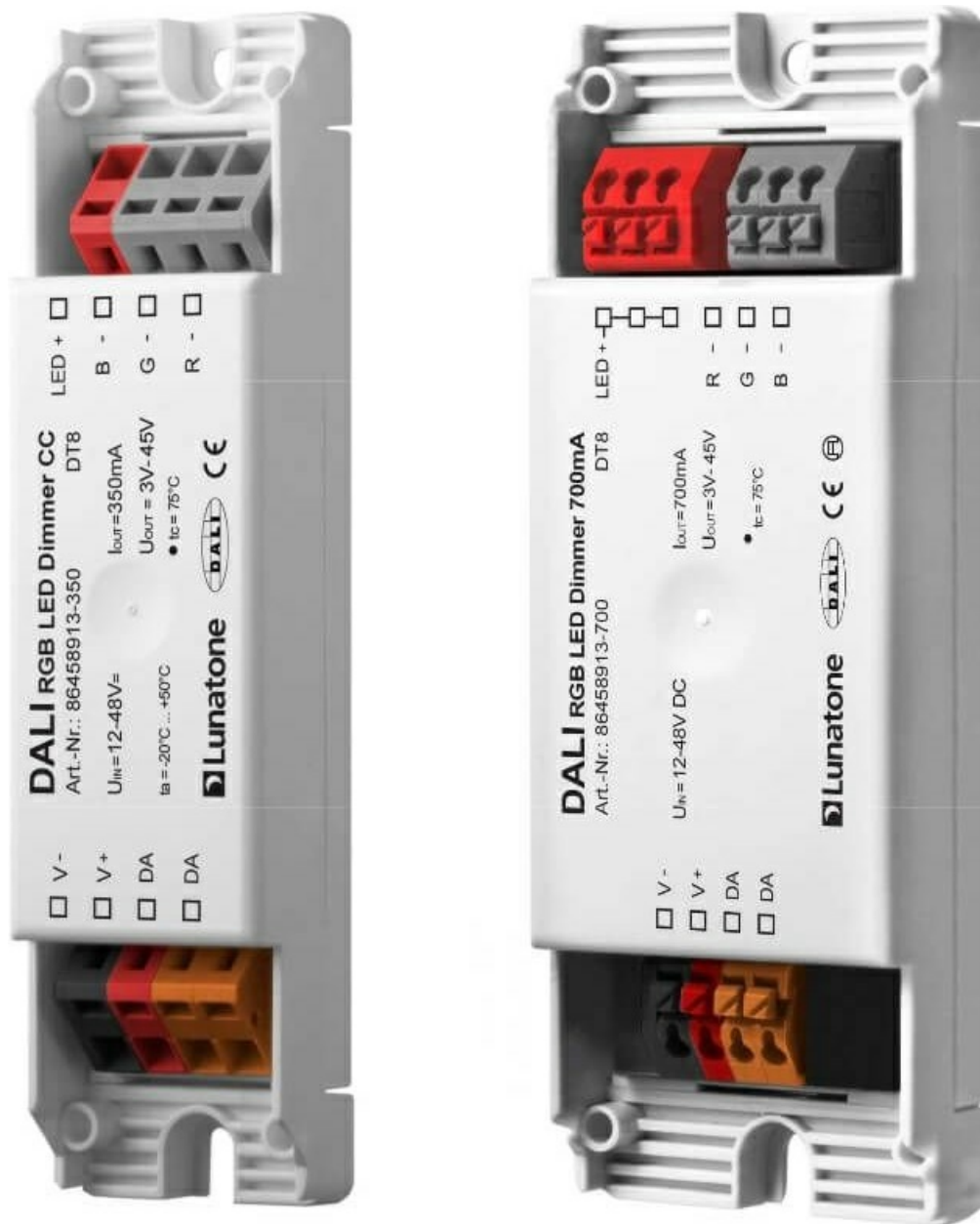
[Home](#) » [Next Design](#) » Next Design ETHICS LED Dimmer Instruction Manual 

### Contents

- 1 Next Design ETHICS LED Dimmer
- 2 Product Usage Instructions
- 3 GENERAL INSTRUCTIONS FOR USE
- 4 POWER SUPPLY
- 5 LED SERIES CONNECTION
- 6 GROUND CONNECTION
- 7 ETHICS TECHNICAL DATA
- 8 ETHICS LED EXCHANGE
- 9 CONTACT INFORMATION
- 10 FAQs
- 11 Documents / Resources
  - 11.1 References

# Next Design

Next Design ETHICS LED Dimmer



## Product Usage Instructions

### • Safety Instructions

- Before installing or operating the product, please read and follow all safety instructions provided in the manual to prevent accidents or hazards.

### • Power Supply Connection

- **PRI (Primary):** Connect the power supply to the specified input terminals. **SEC (Secondary):** Connect the LED leads (red/brown/grey) to the corresponding output terminals.

### • LED Connection

- For series connection, connect the LEDs in a series circuit. For parallel connection, connect the LEDs in a parallel circuit following the manufacturer's guidelines.

### • Phase-Cut Dimmer Recommendation

- Use compatible phase-cut dimmers like BUSCH-JAEGER LED-Dimmer 6523 U, BERKER LED-Dimmer 286710, JUNG 225 NVDE, MERTEN MEG5140, GIRA 2262 00, ELTAKO EUD61 for dimming operations.

### • Ground Connection

- Ensure proper grounding by connecting the protective earth wire to the designated ground terminal to

prevent electrical hazards.

- **Care Instructions**

- Regularly clean and maintain the product according to the care instructions provided in the manual to ensure optimal performance and longevity.

## GENERAL INSTRUCTIONS FOR USE

- Please read the assembly instructions carefully before installing the light. Pay close attention to the operating and safety instructions in this manual and keep them.
- The manufacturer assumes no liability for damage caused by disregarding the operating instructions and incorrect commissioning.

## SAFETY INSTRUCTIONS

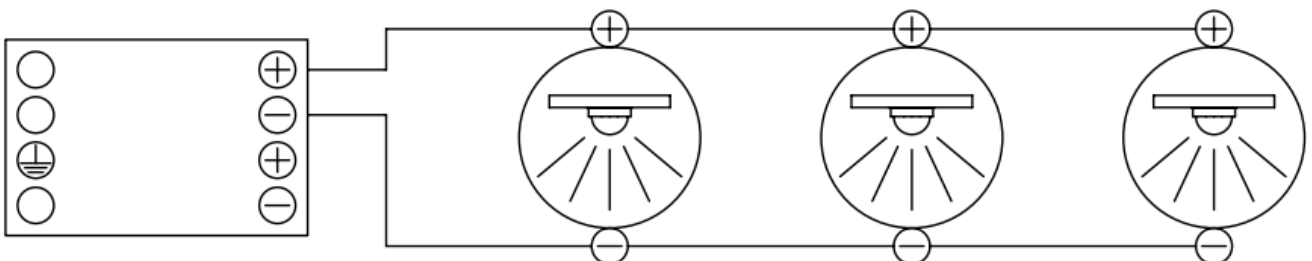
- Check the scope of delivery and its perfect condition immediately after purchasing the goods
- Avoid looking directly at the light source. This can cause damage to the eyes
- Assembly may only be carried out by qualified specialist personnel
- Repair work must only be carried out by authorized specialist personnel or the manufacturer
- Switch off the power during all assembly work

## POWER SUPPLY

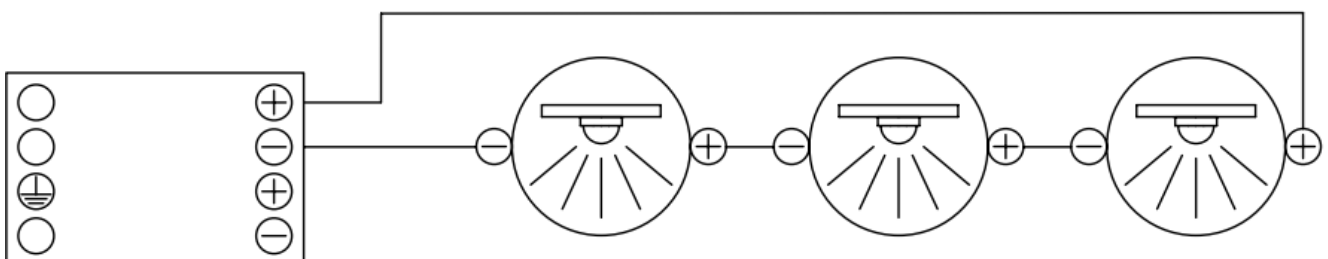
- **PRI:** power supply
- **SEC:** LED (+): lead red/brown / grey
- **LED (-):** lead black/white
- **PUSH:** TASTER lead white / white (without polarity)
- **1..10 V:** POTI lead green/yellow (without polarity)
- **POWER:** constant power control (max. 500mA)

## LED SERIES CONNECTION

- When connected in series, the voltage adds up and the current remains the same.



- In a parallel connection, the current is added together and the voltage remains the same.



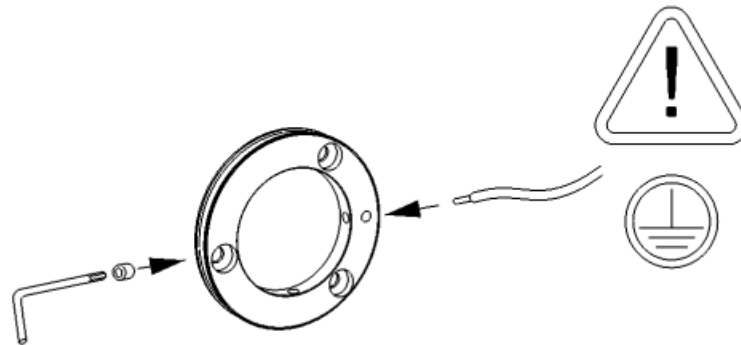
## PHASE-CUT DIMMER REFERENCE

Our recommendations are valid for all trailing edge dimmable power supplies and 230 volt LEDs and are based on our own functional tests. System-related peculiarities or external influences (e.g. voltage fluctuations) can still influence the dimming behavior. For this reason, we do not provide any guarantee or warranty on our recommendation.

- BUSCH-JAEGER LED-Dimmer 6523 U
- BERKER LED-Dimmer 286710
- JUNG 225 NVDE
- MERTEN MEG5140
- GIRA 2262 00
- ELTAKO EUD61

## GROUND CONNECTION

- Use the ground connection to all installation lights. It will protect the light to electrostatic discharge.



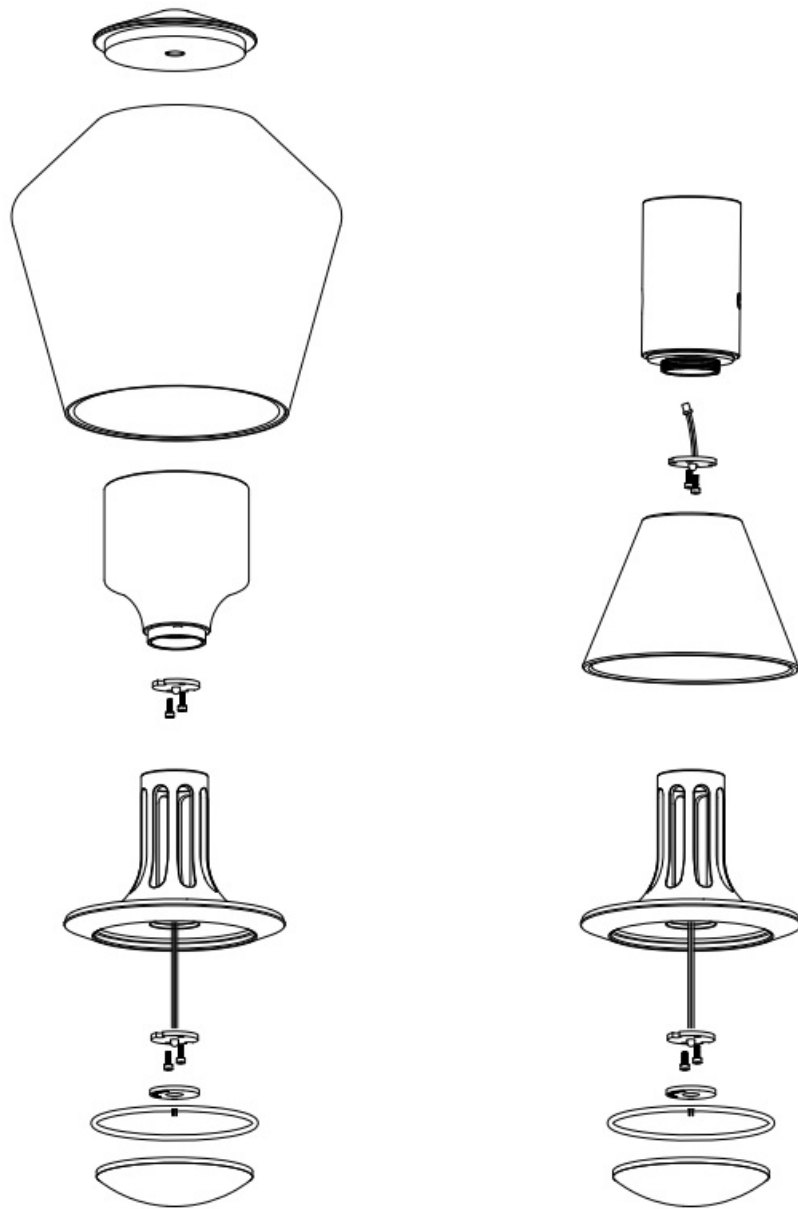
## CARE

- Use mild cleaning supplies for all surfaces. You can use some grinding fleece for strong dirtying and fine scratches.

## ETHICS TECHNICAL DATA

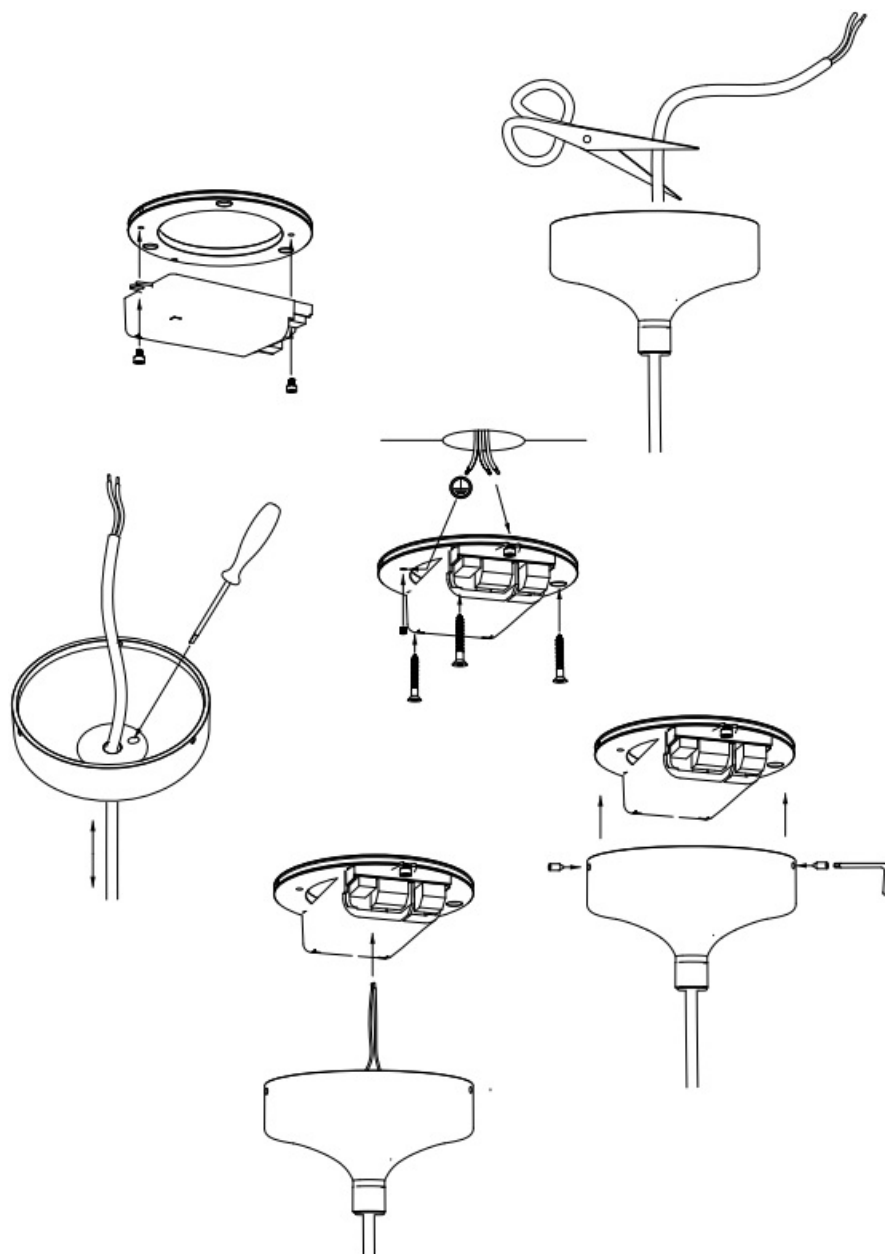
- **power:** 12 / 20 Watt
- **luminous flux:** 1.200 / 2.000 Lumen
- **operation voltage:** 12 Volt
- **operation current:** 500 / 850 mA
- **color temperature:** 2.700 Kelvin
- **color index:** CRI 95
- **angle beam:** 85°
- **dimmbar light dimmable:** Phase / PUSH / 1 – 10V / Dali / Casambi
- **LED changeable:** screwed

## ETHICS LED EXCHANGE



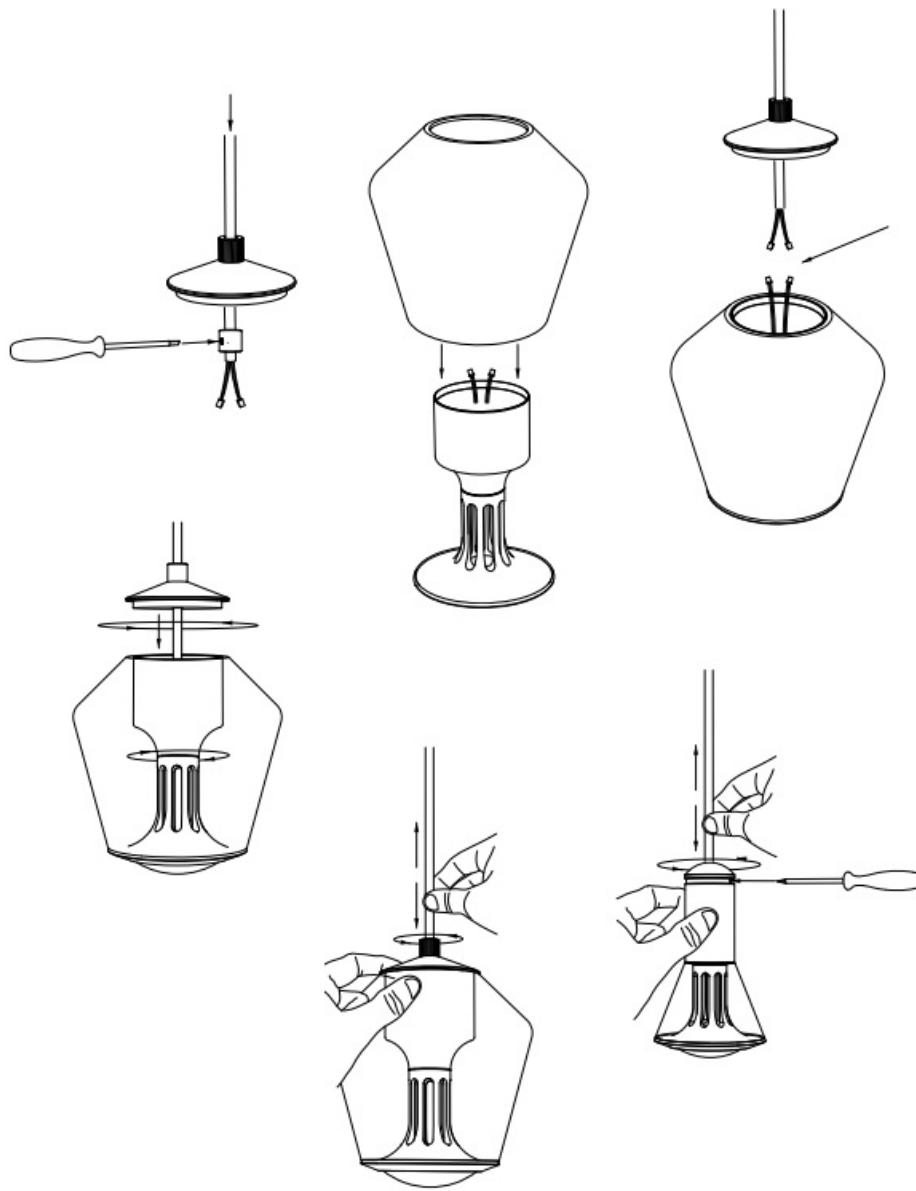
## E-WGPL

- LED direct max. 850mA (cable brown = plus / white = minus)
- LED indirect max. 850mA (cable yellow = plus / green = minus)



## E-WGPL

- LED direct max. 850mA (cable brown = plus / white = minus)
- LED indirect max. 850mA (cable yellow = plus / green = minus)



## CONTACT INFORMATION


- the next lesson more gmbh
- Scheidtweilerstr. 79
- 50933 Köln
- Deutschland
- **T:** +49 (0) 221 – 99 98 44 80
- **F:** +49 (0) 221 – 99 98 44 88
- [info@less-n-more.com](mailto:info@less-n-more.com)
- [www.less-n-more.com](http://www.less-n-more.com)
- [www.next.design](http://www.next.design)

All rights reserved. This catalog or any excerpts thereof may not be duplicated, saved in databases or transmitted in any form whatsoever without explicit written authorization from Lesser GmbH. This catalog has been checked with due care. Nevertheless, it is possible for errors to occur. We shall not be held liable for the contents. Original colours may differ from the sample colours printed. We reserve the right to carry out modifications to design details, finishes, and colors in the interests of product improvement. All of our deliveries to you are exclusively performed on the basis of our general terms and conditions. You can find them at [www.less-n-more.com](http://www.less-n-more.com).

## FAQs

- **Q: Is the product compatible with all types of dimmer switches?**
  - **A:** No, it is recommended to use specific phase-cut dimmers like BUSCH-JAEGER LED-Dimmer 6523 U, BERKER LED-Dimmer 286710, JUNG 225 NVDE, MERTEN MEG5140, GIRA 2262 00, ELTAKO EUD61 for dimming purposes.
- **Q: Can the LEDs be replaced in this product?**
  - **A:** Yes, the LEDs are changeable in this product. Refer to the manufacturer's guidelines for proper replacement procedures.

## Documents / Resources

	<a href="#">Next Design ETHICS LED Dimmer</a> [pdf] Instruction Manual ETHICS LED Dimmer, ETHICS, LED Dimmer, Dimmer
---	---

## References

- [n-more.com](https://www.n-more.com)
- [less'n'more - designer lights from Germany – Less'n'more](#)
- [User Manual](#)

[Manuals+](#), [Privacy Policy](#)

This website is an independent publication and is neither affiliated with nor endorsed by any of the trademark owners. The "Bluetooth®" word mark and logos are registered trademarks owned by Bluetooth SIG, Inc. The "Wi-Fi®" word mark and logos are registered trademarks owned by the Wi-Fi Alliance. Any use of these marks on this website does not imply any affiliation with or endorsement.