



## Next Century RR4-TR Remote Reader User Manual

[Home](#) » [Next Century](#) » Next Century RR4-TR Remote Reader User Manual 

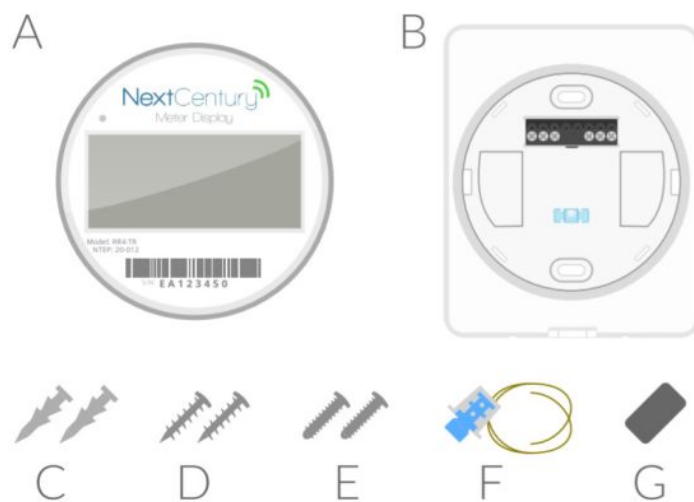


Welcome to your new Remote Reader with integrated NextCentury Transceiver (Radio). The RR4-TR is an advanced meter reading solution that provides a high visibility remote display of one or two u-lity meters. It includes wireless AMR support with the NextCentury Cloud Pla[orm. Se\ng up and installing the Remote Reader is quick and easy.

### Contents

- [1 Packaging Contents](#)
- [2 Important](#)
- [3 Addi\\$onal Resources](#)
- [4 Installation](#)
- [5 Installation Steps](#)
- [6 Configuration Options:](#)
- [7 Wiring Guide](#)
- [8 Dual Meter+™](#)
- [9 Direct Connect](#)
- [10 Programming](#)
- [11 Mobile App Download](#)
- [12 Additional Products](#)
- [13 Documents / Resources](#)
- [14 Related Posts](#)

### Packaging Contents



A) RR4-TR Remote Reader	E) Box Mount Screws #6-32
B) Mounting Plate	F) Wire Security Assembly
C) Sheetrock Anchors	G) AC-van Magnet (one per case)
D) Wall Mount Screws #6-20	

## Important



During installation, you will disconnect the Remote Reader from the Mounting Plate. It is not necessary to open the Remote Reader. The Remote Reader is a sealed, watertight design, and should only be opened to replace the battery (10-year approximate battery life).

## Additional Resources



[products.nextcenturymeters.com/rr4-tr](https://products.nextcenturymeters.com/rr4-tr)

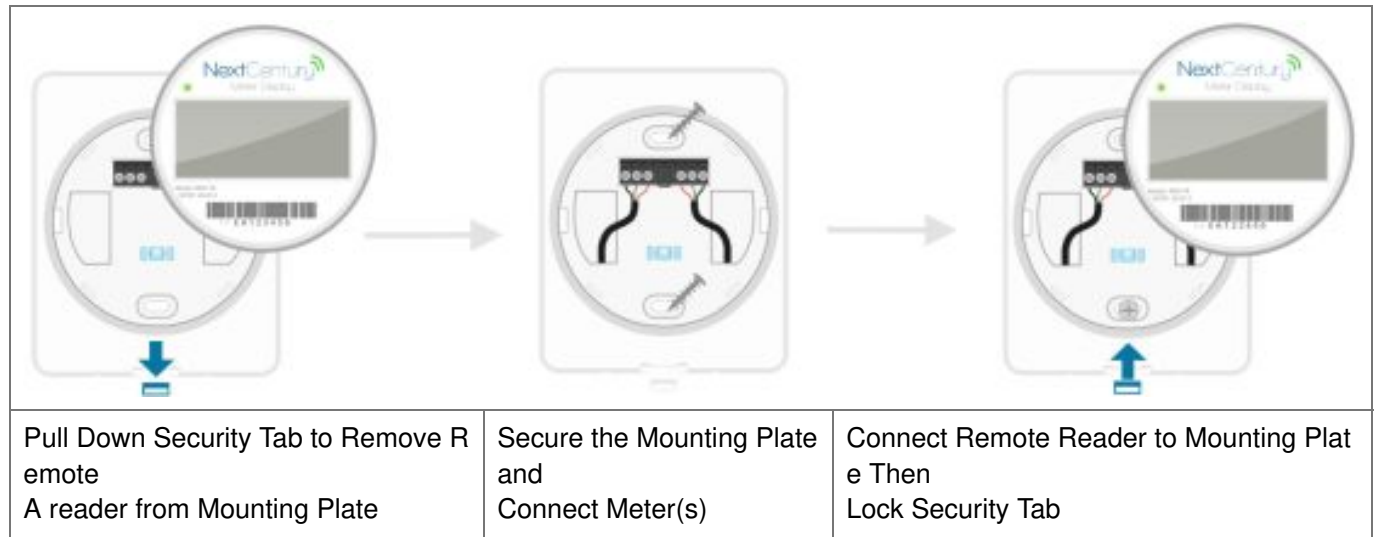
For a full installation guide, spec sheets, and additional resources, please visit:

## Contact Information

Phone: 844.538.8203

Email: [support@nextcenturymeters.com](mailto:support@nextcenturymeters.com)

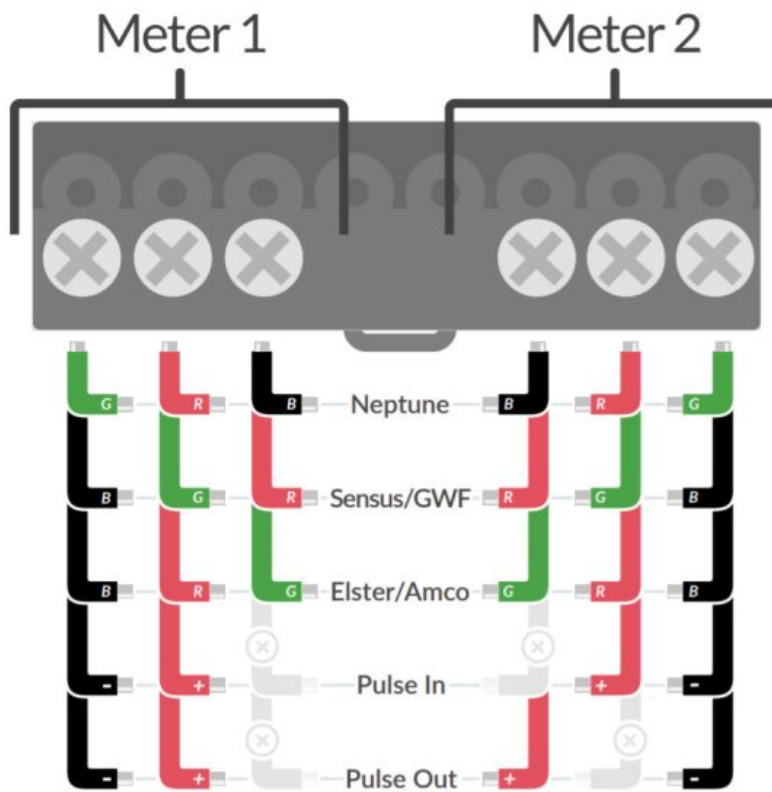
## Installation



## Installation Steps

1. Disconnect the Remote Reader from the Mounting Plate. **Remember to first pull down on the Mounting Plate Security Tab.**
2. Install the Mounting Plate using the anchors and #6-20 screws, or use the #6-32 screws to install on a single gang wall box.
3. Connect the wire output from one or two meters to the Remote Reader Mounting Plate (wiring instructions on the other side of this guide).
4. The Remote Reader ships with a default configuration to read one pulse-type water meter. To program, the Remote Reader for other configurations see the "Programming" section on the last page.
5. Test the meter connection: – For pulse meters, ensure the pulse-count increments when a pulse is sent from the connected meter. – For encoder meters, ensure the proper read is displayed. It may be necessary to tap the display or swipe a magnet to get the latest encoder meter read.
6. Test the Integrated Transceiver's network connection using a magnet to initiate a check-in. If the Remote Reader is programmed and able to communicate with the Gateway, the LED will blink green twice.

## Configuration Options:



• 1x Pulse Meter – Default (Meter 1 Port)	• 1x Encoder & 1x Pulse (Meter 1 & 2 Ports)
• 1x Encoder Meter (Meter 1 Port)	• 1x Pulse & 1x Encoder (Meter 1 & 2 Ports)
• 2x Pulse Meters (Meter 1 & 2 Ports)	• 1x Pulse with Pulse Out (Meter 1 & 2 Ports)
• 2x Encoder Meters (Meter 1 & 2 Ports)	

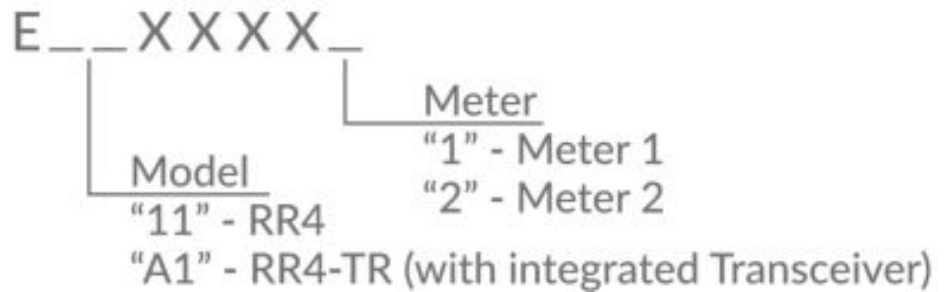
## Wiring Guide

An interac5ve Wiring Guide is also available through the NextCentury Mobile App (Android and iOS Support).

## Dual Meter+™

Meter+™ Technology has been developed to allow a single device to connect to virtually all modern meter outputs. These include a variety of different pulse-out meters as well as encoded output meters. Meter+™ Technology supports Neptune, Sensus, GWF, and Elster/AMCO 3-wire protocols. Simply wire the meter and program the Remote Reader with the applicable configura5on. The Remote Reader includes two Meter+™ Technology ports, allowing for a large variety of configurations.

The Serial Number is located on the face of the Remote Reader. This identification number always ends with a “0.” When communica5ng with the next century Web PlaXorm through a Cellular Gateway (GW4), each meter is assigned a unique Transceiver Serial Number. The Serial Number for Meter 1 will end with a “1” and the serial number for Meter 2 will end with a “2.”



## Direct Connect







**Note:** the DC301 wireless programmer is not required for configuring this model.

## Programming

Option 1: The NCSS Mobile App is used for simple in-field programming and configuraKon. The Mobile App allows your device to communicate directly with the Remote Reader to program and verify your installation.

Option 2: If a NextCentury Cellular Gateway (GW4) and an internet connection are available while programming the Remote Reader, setup and configuraKon can be completed using the Online Web Portal or Mobile App.

## Mobile App Download

	 <p>App Store iOS App</p>	 <p>Google Play Android App</p>	
<a href="http://products.nextcenturymeters.com/mobile?platform=ios&amp;device=rr301-tr">http://products.nextcenturymeters.com/mobile?platform=ios&amp;device=rr301-tr</a>		<a href="http://products.nextcenturymeters.com/mobile?platform=android&amp;device=rr301-tr">http://products.nextcenturymeters.com/mobile?platform=android&amp;device=rr301-tr</a>	

## Additional Products

- GW4: Cellular Gateway
- RE4: Wireless Network Repeater

- **Pre-Programming:** Equipment pre-configured and ready for install

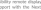
For more, visit: [www.nextcenturymeters.com](http://www.nextcenturymeters.com) or contact [sales@nextcenturymeters.com](mailto:sales@nextcenturymeters.com)

## Documents / Resources

**RR4-TR**  
**Quick Start Guide**  
Next Century Networks, Inc.




Remote, The RR4-TR is an advanced remote reading solution that automates data quality control and is easy to use with minimal training. It features remote data support and the flexibility to add features, testing up and installing the Remote Reader is quick and easy.

**Package Contents**



- 1) RR4-TR Remote Reader
- 2) Mounting Plate
- 3) Standard Reader
- 4) RR4-TR Mount Plate Kit (2)
- 5) RR4-TR Mount Plate Kit (2)
- 6) RR4-TR Mounting Plate (2)
- 7) RR4-TR Mounting Plate (2)
- 8) RR4-TR Mounting Plate (2)

**Important**

During installation you will download the Remote Reader from the Remote Reader Kit. The Remote Reader is a small device that is used to read the data from the Remote Reader. The Remote Reader is a small device that is used to read the data from the Remote Reader. The Remote Reader is a small device that is used to read the data from the Remote Reader.

**Additional Resources**

For full installation guide, user manuals, and additional resources please visit:  
[www.nextcentury.com/rr4-tr](http://www.nextcentury.com/rr4-tr)

**Contact Information**  
 Phone: 888.726.0033  
 Email: [support@nextcentury.com](mailto:support@nextcentury.com)

## Next Century RR4-TR Remote Reader [pdf] User Manual

### RR4-TR, Remote Reader, RR4-TR Remote Reader, Reader

Manuals+,