

NEXSENS CB-SS510-M Sonar Depth Sensor Mount User Guide

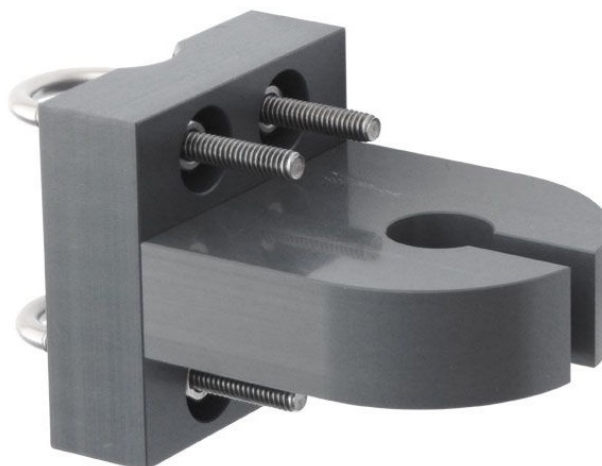
[Home](#) » [NEXSENS](#) » NEXSENS CB-SS510-M Sonar Depth Sensor Mount User Guide 

Contents

- [1 NEXSENS CB-SS510-M Sonar Depth Sensor Mount](#)
- [2 Specifications](#)
- [3 Installation Guide](#)
- [4 Overview](#)
- [5 What's Included](#)
- [6 Installation on Buoy Instrument Cage](#)
- [7 FAQ's](#)
- [8 Documents / Resources](#)
 - [8.1 References](#)
- [9 Related Posts](#)



NEXSENS CB-SS510-M Sonar Depth Sensor Mount



Specifications

- **Product Name:** CB-SS510-M Sonar Depth Sensor Mount
- **Compatible with:** Airmar EchoRange SS510 sonar sensor
- **Material:** Stainless steel
- **U-bolt Size:** 1/4 inch
- **Screw Size:** 3/8 inch

Installation Guide

Step 1: Mounting the U-bolts

1. Place the U-bolts onto an arm of the instrument cage.
2. Run the U-bolts through the slots on the cage mount bracket.
3. Place the 1/4 flat washers, lock washers, and nylon nuts onto the legs of the U-bolt.
4. Use a 7/16 socket or hex driver to tighten the nuts.

Step 2: Mounting the Sonar Sensor

1. Place the Airmar SS510 sonar sensor into the sensor mount bracket.
2. Tighten the sensor using the provided nut.

Step 3: Installation of Buoy Instrument Cage

1. Choose a location near the bottom of the cage to mount the Airmar SS510 sensor.
2. Ensure that the location is unobstructed to prevent interference of the sensor beam.

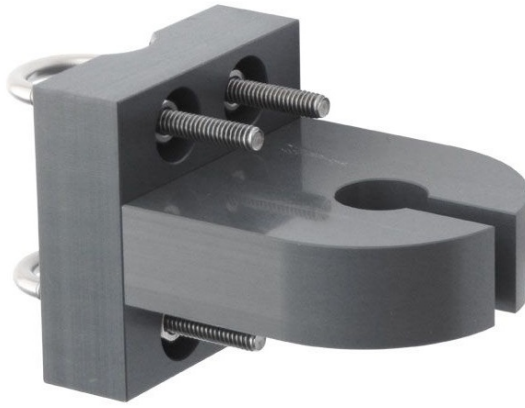
Step 4: Attaching the Sensor Mount Bracket

1. Attach the sensor mount bracket to the cage mount bracket using the 3/8 hex cap screws.
2. Tighten the screws securely with a 5/16 hex key.

Overview

The CB-SS510-M sonar depth sensor mount allows the Airmar EchoRange SS510 sonar sensor to be securely attached to the instrument cage of a CB-Series data buoy system.

Figure 1: CB-SS510-M Sonar Depth Sensor Mount



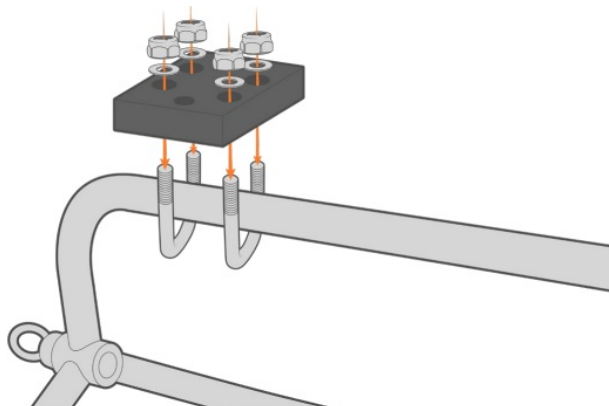
What's Included

- (1) Cage mount bracket
- (1) Sensor mount bracket
- (2) 3/8" hex cap screws, 1-1/2"
- (2) 1/4" U-bolts
- (4) 1/4" Flat washers
- (4) 1/4" Lock washers
- (4) 1/4" Nylon nuts

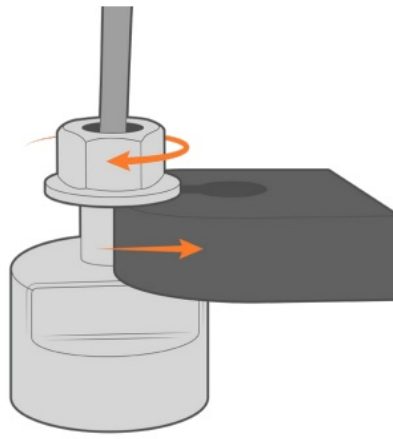
Installation on Buoy Instrument Cage

1. Choose a location near the bottom of the cage to mount the Airmar SS510 sensor.
 - Ensure the location is unobstructed to prevent interference of the sensor beam.
2. Place the U-bolts onto an arm of the instrument cage and run them through the slots on the cage mount bracket.
 - Place the 1/4" flat and lock washers, and nylon nuts onto the legs of the U-bolt.
 - Use a 7/16" socket or hex driver to tighten.

Figure 2: Mount the bracket to the instrument cage.

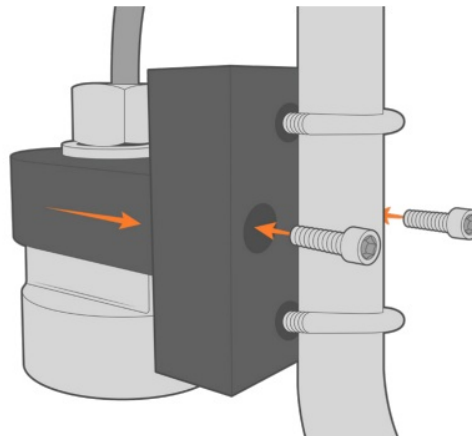


3. Place the SS510 into the sensor mount bracket and tighten using the provided nut.
 - **Figure 3:** Mount the sonar onto the bracket



4. Attach the sensor mount bracket to the cage mount bracket with the 3/8" hex cap screws
 - Tighten securely with a 5/16" hex key.

Figure 4: Attach the sensor bracket to the cage bracket.



937-426-2703 www.hexsens.com

2091 Exchange Court Fairborn, Ohio 45324

FAQ's

What is the size of the U-bolts?

The U-bolts used for mounting are 1/4 inch in size.

What is the screw size for attaching the sensor mount bracket?

The screw size for attaching the sensor mount bracket is 3/8 inch.

What tools are required for tightening the U-bolt nuts?

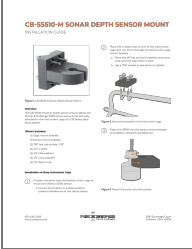
You will need a 7/16 socket or hex driver to tighten the U-bolt nuts.

What is the recommended location for mounting the Airmar SS510 sensor?


It is recommended to mount the sensor near the bottom of the cage, ensuring that the location is

unobstructed to prevent interference of the sensor beam.

Documents / Resources

	<p>NEXSENS CB-SS510-M Sonar Depth Sensor Mount [pdf] User Guide</p> <p>CB-SS510-M, CB-SS510-M Sonar Depth Sensor Mount, CB-SS510-M, Sonar Depth Sensor Mount, Depth Sensor Mount, Sensor Mount, Mount</p>
-----------------------------------------------------------------------------------	----------------------------------------------------------------------------------------------------------------------------------------------------------------------------------------------------------------------------------

References

-  [NexSens Technology Inc. - Better Data. It's what we do](#)
- [User Manual](#)