

# NEX NPA-RCU2 Bluetooth Voice Remote Control User Guide

## Contents

- [1 NEX NPA-RCU2 Bluetooth Voice Remote Control](#)
- [2 Product Information](#)
- [3 Product Usage Instructions](#)
- [4 Frequently Asked Questions](#)
- [5 DESCRIPTION](#)
- [6 BASIC PARAMETERS](#)
- [7 CONNECT](#)
- [8 CANCEL CONNECTION](#)
- [9 FCC Statement](#)
- [10 Documents / Resources](#)
  - [10.1 References](#)
- [11 Related Posts](#)



## NEX NPA-RCU2 Bluetooth Voice Remote Control

### Product Information

#### Specifications:

- **Product Name:** Bluetooth Voice Remote Control
- **Model:** NPA-RCU2
- **Size:** 130mm x 28mm x 17.5mm
- **Battery:** AAA x 2
- **Work Temperature:** -10°C to 40°C
- **Authentication:** CE/FCC/NCC/ROHS/REACH

### Product Usage Instructions

#### 1. Navigation and Selection:

Use the UP, DOWN, LEFT, RIGHT, and OK buttons for navigation and selection.

#### 2. Basic Functions:

The remote control features BACK and HOME buttons for basic\ functions.

### 3. Connecting to a Device:

Press and hold the BACK and HOME buttons simultaneously for three seconds to initiate pairing mode. The white indicator will flash. On the host device, select the device name “Playground Remote” to establish a connection. The remote’s indicator light will stay on once paired.

### 4. Canceling Connection:

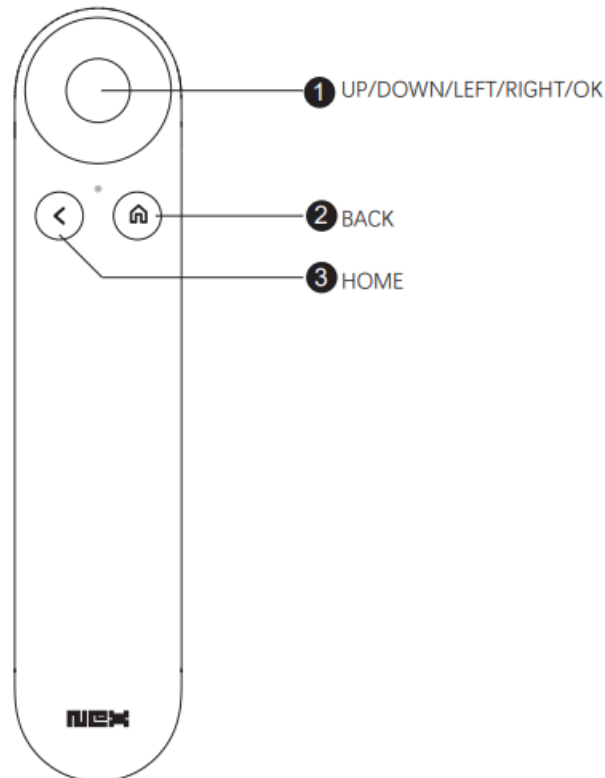
To cancel the Bluetooth pairing information, press and hold the Select and HOME buttons together for five seconds. The indicator will flash three times, indicating the cancellation of the connection.

## Frequently Asked Questions

### Q: What should I do if the indicator lights do not function as described?

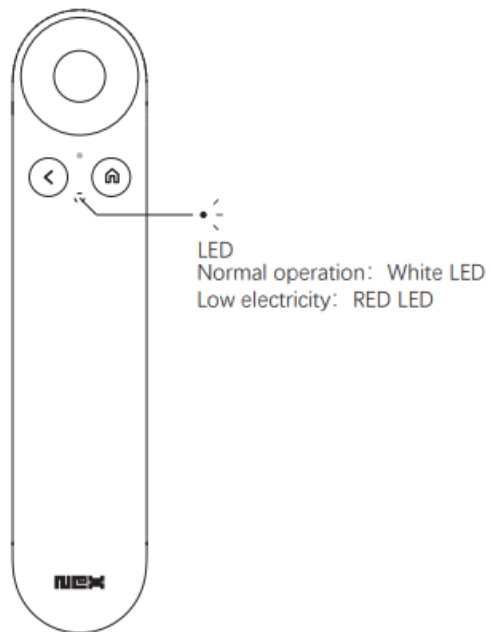
A: If the indicator lights do not behave as expected, try replacing the batteries with fresh AAA batteries. If the issue persists, contact customer support for further assistance.

## DESCRIPTION



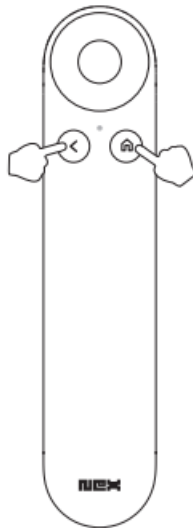
## BASIC PARAMETERS

- Product name Bluetooth voice remote control
- Model NPA-RCU2
- Size 130mm\*28mm\*17.5mm
- Battery AAA\*2
- Work Temperature -10°C~ 40°C
- Authentication CE/FCC/NCC/ROHS/REACH



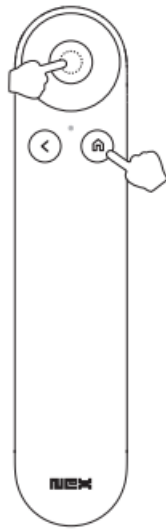
## CONNECT

When the “BACK” and “HOME” buttons are held at the same time for three seconds, the white indicator flashes. The host clicks the device name “Playground Remote” to connect to the pairing, and the remote control indicator light is always on after pairing;



## CANCEL CONNECTION

Press and hold the “Select” and “HOME” buttons at the same time for five seconds, the indicator flashes 3 times, and the Bluetooth pairing information is canceled



## FCC Statement

This device complies with part 15 of the FCC Rules. Operation is subject to the following two conditions: (1) This device may not cause harmful interference, and (2) this device must accept any interference received, including interference that may cause undesired operation. Any changes or modifications not expressly approved by the party responsible for compliance could void the user's authority to operate the equipment.

NOTE: This equipment has been tested and found to comply with the limits for a Class B digital device, pursuant to Part 15 of the FCC Rules. These limits are designed to provide reasonable protection against harmful interference in a residential installation. This equipment generates, uses and can radiate radio frequency energy and, if not installed and used in accordance with the instructions, may cause harmful interference to radio communications. However, there is no guarantee that interference will not occur in a particular installation.

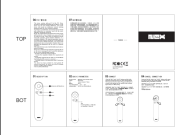
If this equipment does cause harmful interference to radio or television reception, which can be determined by turning the equipment off and on, the user is encouraged to try to correct the interference by one or more of the following measures:

- Reorient or relocate the receiving antenna.
- Increase the separation between the equipment and receiver.
- Connect the equipment into an outlet on a circuit different from that to which the receiver is connected.
- Consult the dealer or an experienced radio/TV technician for help.

The device has been evaluated to meet general RF exposure requirements. The device can be used in portable exposure condition without restriction.

FCC ID: 2A7GQ-NPG-RCU2

## Documents / Resources

	<a href="#">NEX NPA-RCU2 Bluetooth Voice Remote Control</a> [pdf] User Guide NPA-RCU2, NPA-RCU2 Bluetooth Voice Remote Control, Bluetooth Voice Remote Control, Voice Remote Control, Remote Control, Control
---	--

## References

- [User Manual](#)

[Manuals+](#), [Privacy Policy](#)

This website is an independent publication and is neither affiliated with nor endorsed by any of the trademark owners. The "Bluetooth®" word mark and logos are registered trademarks owned by Bluetooth SIG, Inc. The "Wi-Fi®" word mark and logos are registered trademarks owned by the Wi-Fi Alliance. Any use of these marks on this website does not imply any affiliation with or endorsement.