

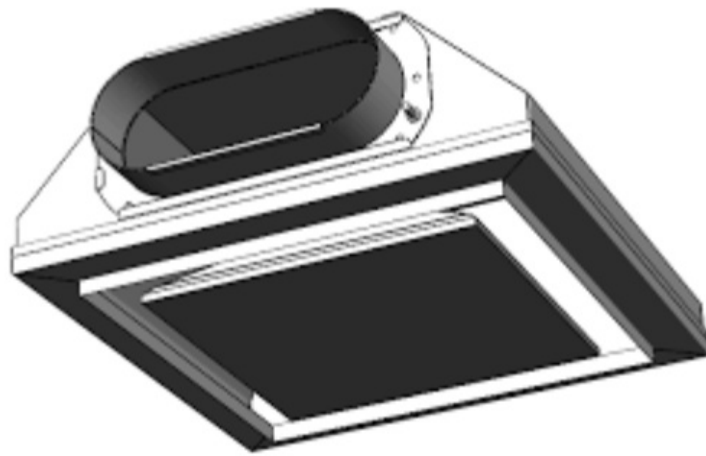
# newtech 8164 Shadowline Square Diffuser Instruction Manual

[Home](#) » [Newtech](#) » newtech 8164 Shadowline Square Diffuser Instruction Manual 

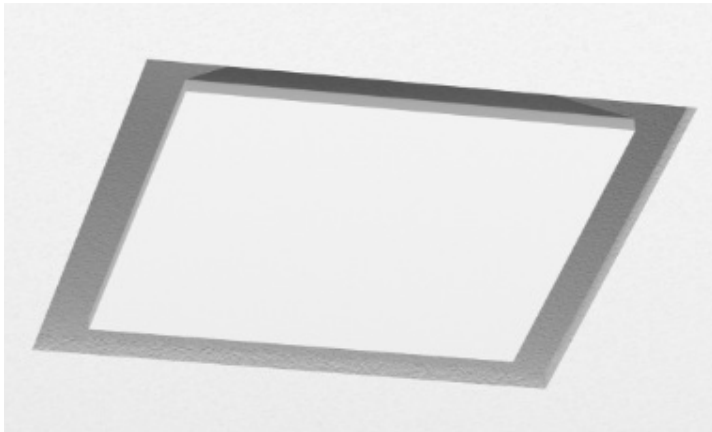
## Contents

- 1 newtech 8164 Shadowline Square Diffuser Instruction Manual
- 2 PRODUCT OVERVIEW
- 3 PACKAGE CONTENTS
- 4 DIMENSIONS
- 5 Tools/fasteners requires
- 6 Cut Ceiling Sheet
- 7 Important:
- 8 Fit frame in ceiling hole
- 9 Install Gyprock Edge Bead (Not Supplied)
- 10 Connect to exhaust system
- 11 Shadowline Square Diffuser Code: 8164
- 12 Connect to exhaust system
- 13 Install Centre Panel
  - 13.1 MAINTENANCE/CLEANING
  - 13.2 CONTACT US
  - 13.3 WARRANTY
  - 13.4 Read More About This Manual & Download PDF:
- 14 Documents / Resources
  - 14.1 References

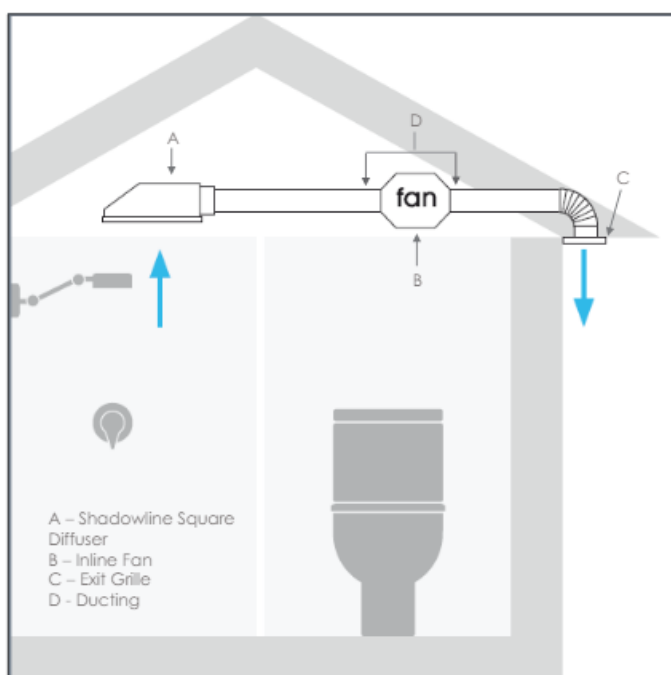
## newtech 8164 Shadowline Square Diffuser Instruction Manual



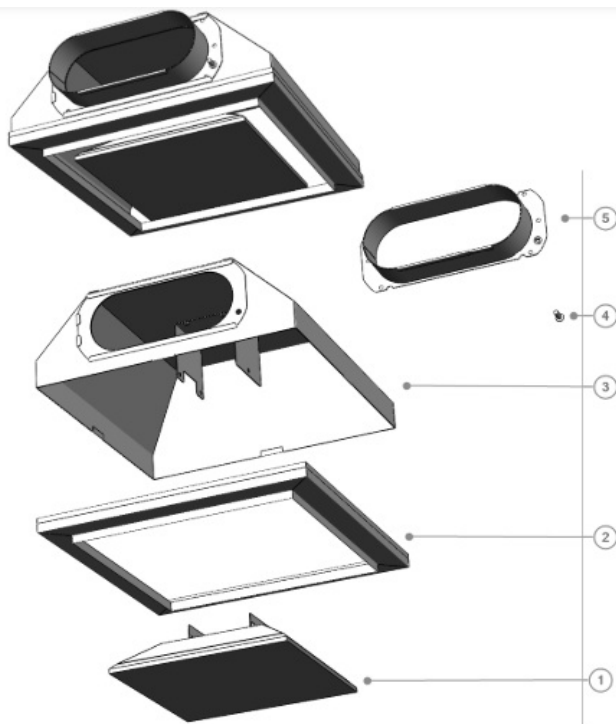
### PRODUCT OVERVIEW



\*Product includes grille only. Fan and duct sold separately. Contact Newtech for details

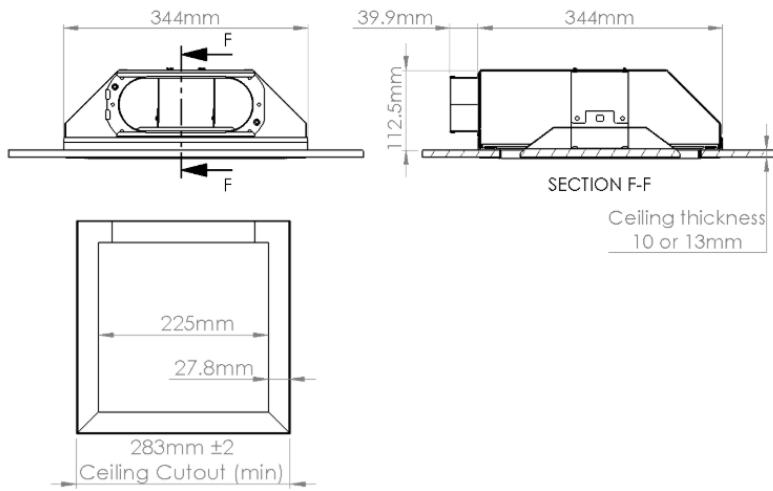


### PACKAGE CONTENTS



Item	Description
1	Centre Panel
2	Ceiling Frame
3	Plenum
4	Screw for Spigot, M5 Socket Head
5	Spigot, Oval (150mm Flex)
6	Screws, 8g x 20, Qty 4

## DIMENSIONS



## INSTALLATION

The Newtech Shadowline Square diffuser should be installed by qualified tradespeople.

### Tools/fasteners requires

- Tape measure
- Set Square
- Gyprock saw
- Allen Key Set
- Cordless Drill (3.2mm drill bit)
- Impact driver (Phillip's bit)
- General Plastering equipment
- Equipment included when purchased as an exhaust kit
  - Large cable tie
  - Duct Tape
  - 150mm Flexible Duct

### Choose Ceiling Location

- Close to source of moisture (e.g. shower or clothes drier)
- Suitable clearance for diffuser – away from ceiling framework and other services

### Install Fan

Install ducted inline fan (as instructed in fan manual). Route ducting to the diffuser location. The diffuser requires 150mm flexible ducting for connection to the diffuser spigot.

### Rough-in Diffuser Important:

Depending on the ceiling cavity height, the diffuser may be required to be located in the cavity prior to the ceiling sheet installation

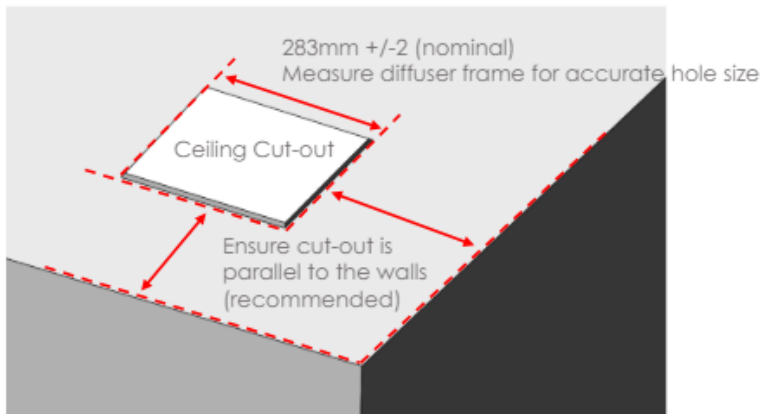
- For ceiling cavity heights greater than 350mm, the diffuser can be installed after the ceiling is fitted. It can be

fed through the hole required for mounting the diffuser

- For ceiling cavity heights less than 350mm, locate the complete diffuser inside the cavity prior to sheeting the ceiling.

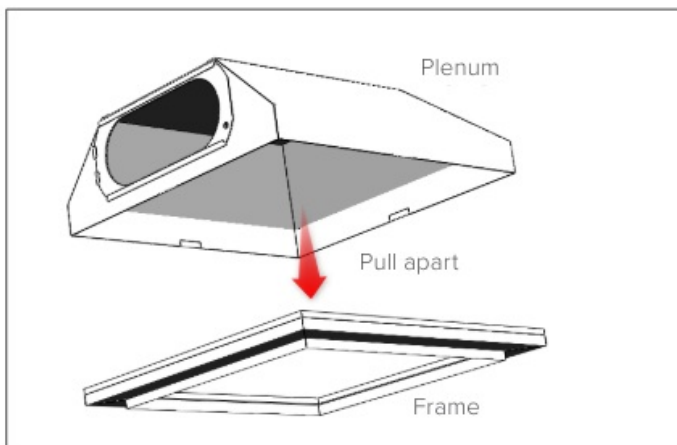
## Cut Ceiling Sheet

Mark and cut the ceiling hole. Measure the diffuser frame for accurate hole size



Install the diffuser frame

Detach frame from diffuser plenum



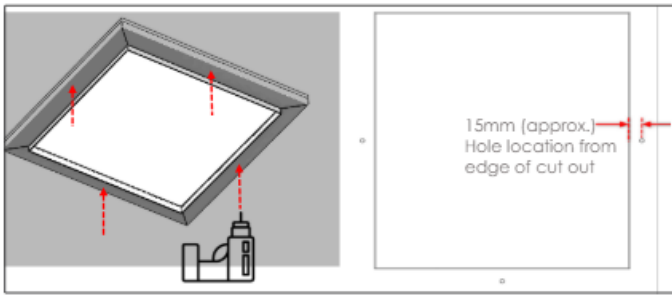
If the diffuser is located inside the ceiling cavity, access it through ceiling hole, and detach frame. Alternatively, feed the frame through the ceiling hole as shown below

## Important:

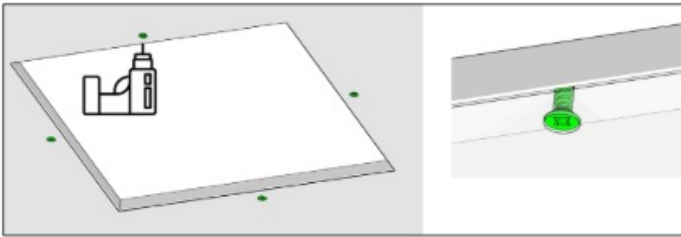
For the centre panel to align with the finished ceiling, the frame must sit **FLUSH** on the top side of the ceiling. Ensure top surface of ceiling is free from bumps or debris prior to installing frame.

## Fit frame in ceiling hole

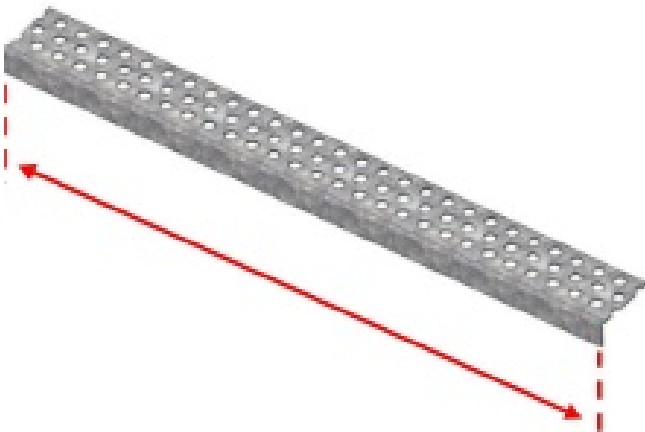
Drill 4 x pilot hole – 3.2mm through both ceiling sheet and diffuser frame



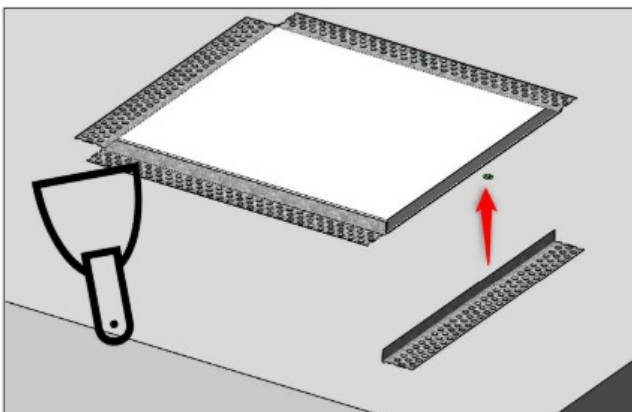
Use impact driver to secure with 4 x screws (8g x 20 countersunk)

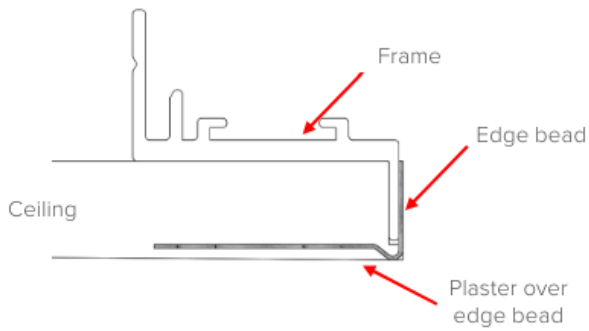


### Install Gyprock Edge Bead (Not Supplied)



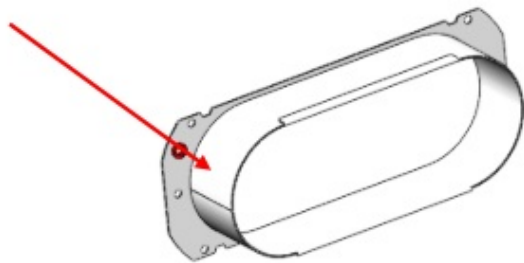
Cut length of edge bead to match frame opening. For best result, gaps should be minimal  
Install 4x edge beads to ceiling opening. Fasten and set into ceiling as per standard plastering practices



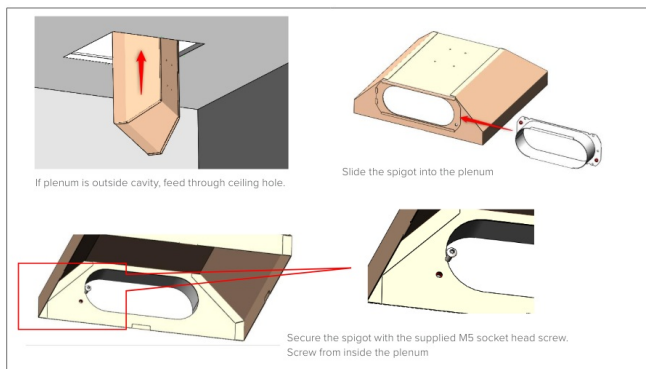


## Connect to exhaust system

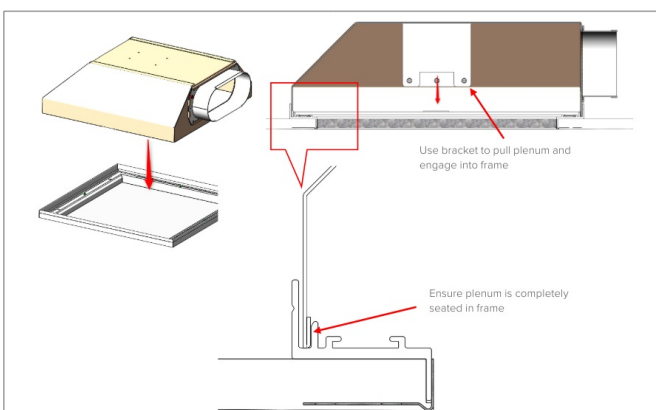
Connect the Shadowline Diffuser spigot to the flexible ducting (150mm) coming from the inline exhaust fan. Use a cable tie to deform the duct to the spigot shape. Seal the duct to the spigot with suitable duct tape (we recommend silver tape).



## Shadowline Square Diffuser Code: 8164

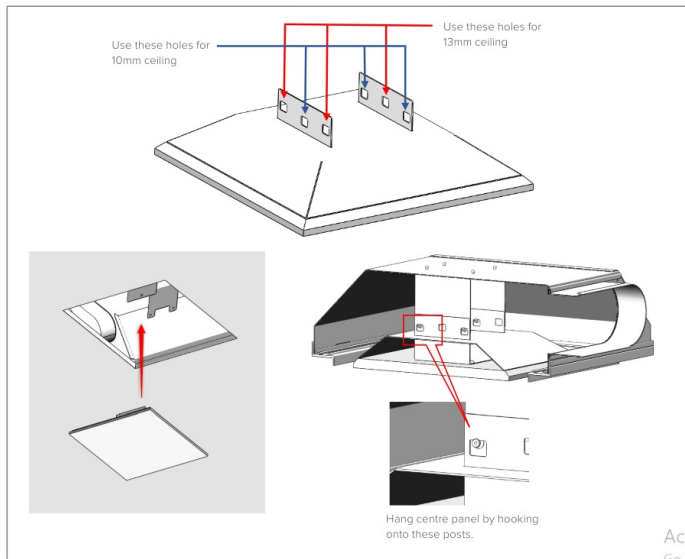


## Connect to exhaust system



## Install Centre Panel

The centre panel can be hung in two orientations – one for 10mm thick ceiling sheet and one for 13mm thick ceiling sheet. Depending on your ceiling, use the square holes in the centre panel bracket indicated below. Rotate panel 180 deg to select alternate hole set. Centre panel is primed and ready for final paint finish.



Turn on exhaust system and check airflow. Ensure there are no obstructions in the ductwork.

## MAINTENANCE/CLEANING

Remove centre panel for periodic cleaning. Clean with vacuum and dusting cloth.

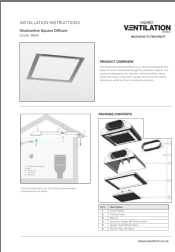
## CONTACT US

## WARRANTY

2 year warranty from date of purchase

***Read More About This Manual & Download PDF:***

## Documents / Resources

	<p><a href="#">newtech 8164 Shadowline Square Diffuser</a> [pdf] Instruction Manual</p> <p>8164 Shadowline Square Diffuser, 8164, Shadowline Square Diffuser, Square Diffuser, Diffuser</p>
---	---



## References

- [e Ventilation Solutions For A Healthy Home and Workplace | Expella](#)
- [User Manual](#)

[Manuals+](#), [Privacy Policy](#)

This website is an independent publication and is neither affiliated with nor endorsed by any of the trademark owners. The "Bluetooth®" word mark and logos are registered trademarks owned by Bluetooth SIG, Inc. The "Wi-Fi®" word mark and logos are registered trademarks owned by the Wi-Fi Alliance. Any use of these marks on this website does not imply any affiliation with or endorsement.