



NewStarLighting 51HC2 LED Highly Durable Linear Fixture Owner's Manual

[Home](#) » [NewStarLighting](#) » NewStarLighting 51HC2 LED Highly Durable Linear Fixture Owner's Manual 

NewStarLighting 51HC2 LED Highly Durable Linear Fixture



Contents

1 PRODUCT FEATURES

2 ORDERING INFORMATION

3 SPECIFICATIONS

4 DIMENSIONAL DATA

5 PERFORMANCE DATA

6 CUSTOMER SUPPORT

7 Documents / Resources

7.1 References

PRODUCT FEATURES

- Apartment Buildings, School Campuses, Public Housing Complexes, Transportation Terminals, Stairwells, Locker Rooms, and more
- Surface installation. Pendant Mount also available. Hardware by others
- This product is Made in America and complies with the Buy American Act requirements

ORDERING INFORMATION

Example: 51HC2-L2401C-B-UN

51HC					
Series	Size	Lumen Output*	Color Temp.	Circuits	Lens
	2 = 4ft	L2 = Standard	35 = 3500K	IC = 1 Circuit	B = .125 Prismatic Poly.
	4 = 4ft	CL = Custom Lumen Output**	40 = 4000K	2C = 2 Circuits*	C = .156 Prismatic Poly.
	*Nominal Size. Dimensional Data on Page 2.	*Subject to change. Performance Data on Page 2. **Must be specified at time of quote. Must not exceed fixture maximum output. Must specify "DM1" if selecting dimming.	50 = 5000K	*Refers to Inboard/Outboard control. Recommended to be used with 4ft.	D = .187 Prismatic Poly.

Voltage	Options
12 = 120V	FZ1 = Fuse (120V)
27 = 277V	FZ2 = Fuse (277V)
34 = 347V	SS = Stainless Steel Housing (Brushed finish)
UN = Universal	EL1 = Emerg. Battery LED 10W*
	EL2 = Emerg. Battery LED 20W*
	WL = Wet Location (under covered ceiling)
	AH = Allen Head screws with center pin reject
	*Consult factory for the CA Title 24 options. If stored, batteries should be fully re charged every six months and kept between 0°C-25°C to maintain optimal battery capacity

SPECIFICATIONS

CONSTRUCTION: 16-Gauge cold rolled steel internally reinforced to provide double wall thickness at ends and corners.

LENS: .125" Clear prismatic UV-stabilized polycarbonate diffuser.

LED: Available in three color temperatures: 3500K, 4000K, and 5000K with maximum 3-step MacAdam variation allowance.

Other color temperatures available, consult factory.

ELECTRICAL: 0-10V Dimming available with 1-100% range.

FASTENERS: Tamper resistant Torx® head screws with center pin reject.

FINISH: White powder coat finish following multistage iron phosphate pretreatment.

INSTALLATION: Surface installation. Pendant Mount also available. Hardware by others.

WARRANTY: New Star Promise.

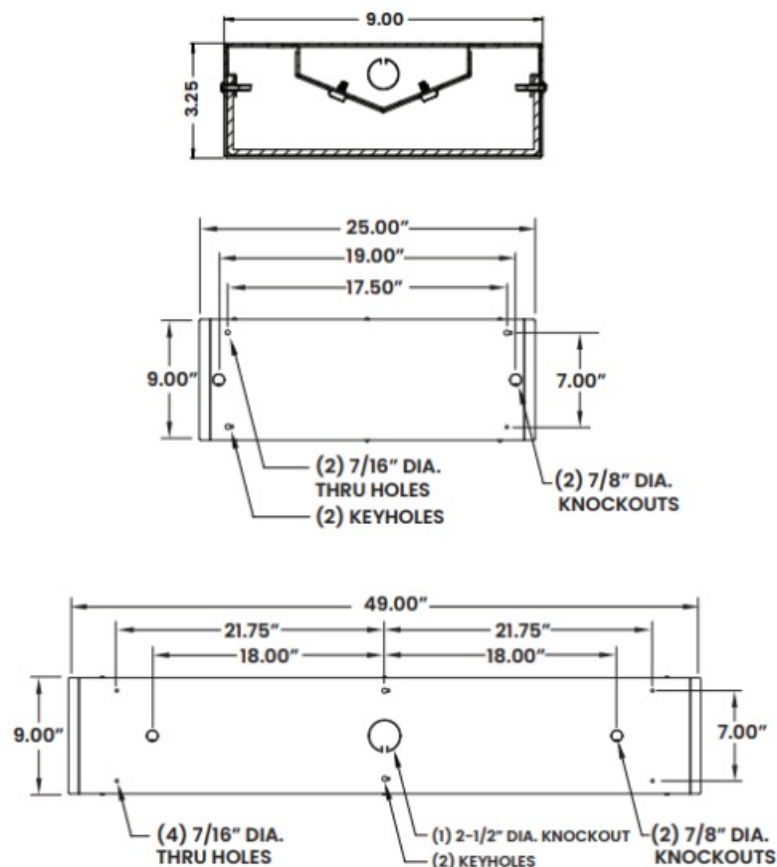
LABEL: Fixture is certified to UL standards for Damp locations.

The 51HC Series is covered by our New Star Promise.

Our promise means we will repair or replace any of our High Abuse or Vandal Resistant architectural luminaires when installed according to our instructions for the life of the original installation if the fixture should fail due to physical abuse.*

*Exclusions to the New Star Promise are gunfire and chemical reactions.

DIMENSIONAL DATA




PERFORMANCE DATA

*LEDs are frequently updated therefore values may change without notice.

MODEL	OUTPUT	COLOR TEM P.	LUMENS DELIVE RED	EFFICACY (lm/ W)	INPUT POWER (W)
51HC2	L2 = Standard	4000K	2750	110	25
51HC4	L2 = Standard	4000K	5500	110	50

CUSTOMER SUPPORT


New Star Lighting
 2225 W Pershing Rd, Chicago, IL 60609
[773-847-1400](tel:773-847-1400)
www.newstarlighting.com


Specifications and dimensions are subject to change without notice. For additional options and dimensional details, please consult your New Star Lighting representative.

© 2024, New Star Lighting. All rights reserved. Unauthorized duplication or distribution is prohibited.





Documents / Resources

	<p>NewStarLighting 51HC2 LED Highly Durable Linear Fixture [pdf] Owner's Manual 51HC2, 51HC4, 51HC2 LED Highly Durable Linear Fixture, 51HC2, LED Highly Durable Linear Fixture, Highly Durable Linear Fixture, Durable Linear Fixture, Linear Fixture</p>
---	--

References

- [User Manual](#)

Manuals+, Privacy Policy

This website is an independent publication and is neither affiliated with nor endorsed by any of the trademark owners. The "Bluetooth®" word mark and logos are registered trademarks owned by Bluetooth SIG, Inc. The "Wi-Fi®" word mark and logos are registered trademarks owned by the Wi-Fi Alliance. Any use of these marks on this website does not imply any affiliation with or endorsement.