



# NEWLUX W1050 Standing Fan with Remote Control User Manual

[Home](#) » [NEWLUX](#) » NEWLUX W1050 Standing Fan with Remote Control User Manual 

## Contents

- 1 NEWLUX W1050 Standing Fan with Remote Control
- 2 SAFETY PRECAUTIONS
- 3 Safety in use
- 4 PRODUCT FEATURES
- 5 ASSEMBLY
- 6 Pedestal fan assembly
- 7 USE AND OPERATION
- 8 Device operation
- 9 MAINTENANCE AND CLEANING
- 10 TECHNICAL DATA
- 11 WARRANTY
- 12 Documents / Resources
  - 12.1 References

# NEWLUX

**NEWLUX W1050 Standing Fan with Remote Control**



## **SAFETY PRECAUTIONS**

### **Before you start**

- Read the instructions in this manual carefully before using the device. Keep this manual for future reference.
- After use, before changing accessories, cleaning, or maintenance, switch off and disconnect the device by removing the plug, without pulling the cord.
- Do not leave the fan running unattended.
- Do not immerse the device in water or pour water over it.
- Do not place the fan near sources of heat.
- Do not allow children to handle the fan. It could be dangerous and must not be used by children.
- If the device has any damaged parts, do not use it. Contact the seller or the Technical Service (SAT).
- Do not expose the device to sunlight or the elements.
- This device is designed exclusively for domestic use. Do not use for functions not indicated in this manual.
- The device must be handled only by designated Newlux service technicians. Do not disassemble or tamper with the product; there is a risk of fire, electrical shock, or personal injury.
- This device must NOT be used by persons with a lack of experience and knowledge due to reduced physical, sensory, or mental capabilities (including children) unless they are supervised or instructed in the use of the device by a person responsible for their safety.
- If an extension cord is used, check that it is in good condition and is suitable for the power of the fan.

### **WARNING**

If the power cord is damaged, do not use the fan. It must be replaced by an authorized service center.

### **Safety in use**

- After removing the packing material, check the integrity of the fan.
- It is an electrical device, so appropriate safety precautions must be observed. Make sure the operating voltage

of the fan corresponds to that of the electrical supply.

- Do not place the appliance near sinks or other containers with liquids.
- Keep the fan away from textiles (e.g. fabrics, curtains, and sofas).
- Do not cover the air inlet or outlet.
- Make sure that the power cord is not in contact with rough or hot surfaces or twisted and coiled around the appliance.
- Place the device on a horizontal, flat surface. It should not be placed on an inclined plane as the device may tip over.
- Do not use flammable materials or aerosols near the device.
- If the fan fails or malfunctions, turn it off and contact the dealer or Technical Services (TAS).

## PRODUCT FEATURES

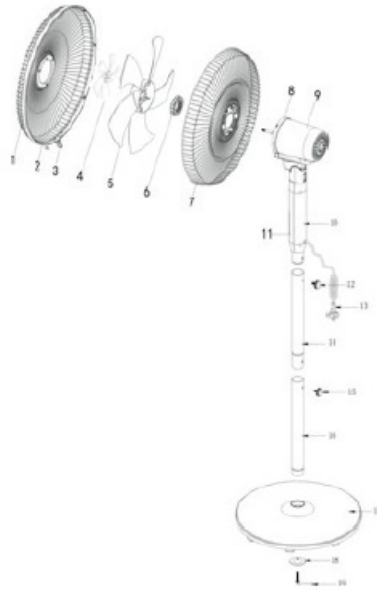
- **10-blade technology on two levels:** This creates an air vortex that increases the airflow and propels the air with more power, maximizing the sensation of freshness. It also reduces noise and distributes the air evenly throughout the room. Diameter 40 cm.
- **Smart control and LED display:** Set the fan parameters conveniently with the remote control from your sofa.
- **18-hour timer:** Set the fan to turn off automatically. Choose the time from the remote control, up to 18 hours, and you can forget about turning it off while saving energy costs. This function is ideal for really hot nights.
- **Copper technology,** exclusive latest generation copper motor. Extends the useful life of the fan and improves efficiency, reducing energy consumption. Built-in safety systems.
- **3-in-1 adjustable height:** Choose the height of the fan to suit your needs at any time: 130, 100, or 70 cm. Use it as a standing fan, with an intermediate height, or as a table fan. This feature also makes it easier to store in the winter.
- **Modern, elegant, and safe design:** Refresh and decorate your home at the same time. The fan design moves away from traditional fans with its minimalist line and subtle contrast in the blades. Available in 2 colors.
- **Oscillation system:** Widens the ventilation angle up to 85° from the remote control. Thus providing a greater sensation of freshness and total coverage. Distributes the air evenly throughout the room.
- **Adjustable air speed:** 3 operating speeds. Easy airflow control according to your needs: choose between low, medium, or high.
- **Windpure:** Instant fresh air – get a deep refreshing sensation in any room of your home.
- **Sturdy, non-slip base:** Provides stability to the fan, with built-in rubber pads to protect the floor surface.
- **Easy to use:** Use the control panel integrated into the fan or the remote control to set the fan simply and intuitively.
- **Safe, adjustable head:** Choose where you want to direct the airflow, by easily tilting the angle of the grille, up or down. Stable, safe grille (front and rear).
- **Quiet:** In silent V1 mode the noise level reaches less than < 50 dB.

## ASSEMBLY

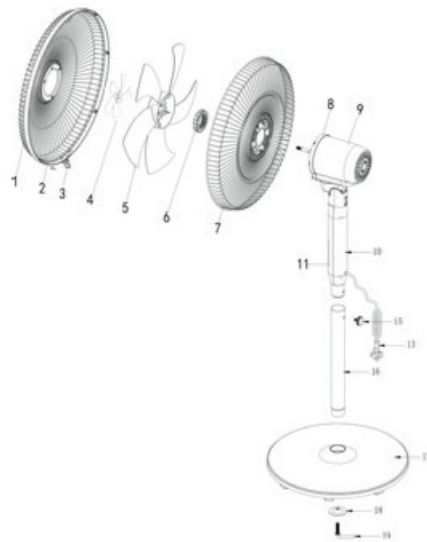
**WARNING:** Do not use the fan without assembling it first, including the support base and grilles.

To assemble the fan, please refer to the images below.

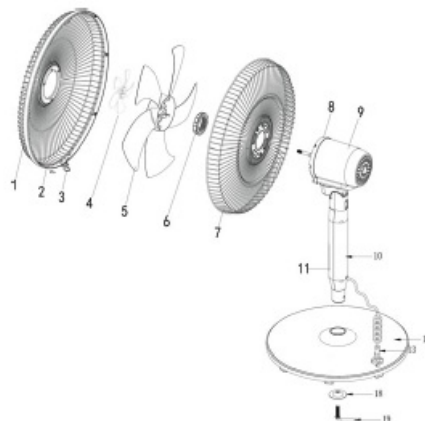
## Pedestal fan



## Intermediate height



## Table fan



1. Front grille

2. Grille attachment
3. Grille fixing screw
4. Front blades
5. Rear blades
6. Rear grille nut
7. Rear grille
8. Motor
9. Rear motor cover
10. Control panel
11. Connection joint
12. Bolt
13. Power cable
14. Upper tube
15. Bolt
16. Lower tube
17. Base
18. Gasket
19. L-shaped screw

### **Pedestal fan assembly**

1. Unpack the fan and remove all the parts from the package.
2. Insert the lower tube (16) into the hole in the base (17) with the gasket (18) under the base, then tighten the base clockwise with the L-shaped screw (19).
3. Insert the upper tube (14) into the center of the lower tube (16), and align the bolt in the screw holes. Tighten the bolt (15).
4. Insert the fan head into the middle of the upper tube (14) and align the screw hole, screw in, and tighten the bolt (12).
5. Use the rear grille nut (6) to attach the rear grille (7) to the fan head, then fit the rear blades (5) and front blades (4) with the rear grille nut (6). Use the locking nut built into the front blades (4) to hold the blades (4 and 5) in place.
6. To attach the front grille (1) to the rear grille (7), use the grille attachment (2) to hold them together carefully, then secure with the screw provided.

### **Intermediate height assembly**

The steps are the same as for the standing fan mode, explained above, except for removing the upper tube (14) and screwing the fan head to the lower tube (16).

### **Steps to follow as a desktop fan**

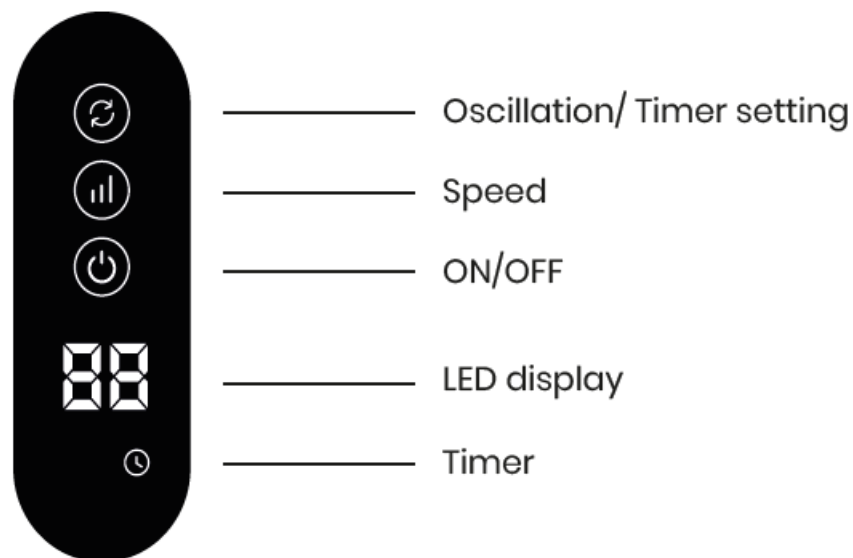
The steps are the same as for the pedestal fan assembly, except for removing both the upper (14) and lower tubes (16) and screwing the fan head to the base.

## **USE AND OPERATION**


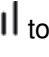

Before each use, check that the unit is in good condition and that the power cord is not damaged. If the power

cable is damaged, contact the dealer or Technical Services (TAS).

## Device operation



## Control panel


- Switch on the fan via the control panel on the top of the fan or via the remote control.
- Press the ON/OFF button  to start the fan.
- Press the SPEED button  to select the level: low, medium, or high.
- The speed is shown on the LED display.
- **V1 = Low speed V2 = Medium speed V3 = High speed**
- Press the ROTATE button  to make the fan rotate on itself automatically. If you want to stop the oscillation, press the ROTATE button again.
- Maximum angle: 90°.

## Setting the device

- Manual tilting head. The fan head assembly can be tilted to direct the breeze up or down.
- Make sure the fan is disconnected from the power supply before adjusting the tilt angle.

## Timer

This appliance is equipped with a timer and automatic switch-off.

- Press the ROTATE button  for 3 seconds on the control panel: the display will flash. Then press the ROTATE button for each 1 h to be added. The display will then stop flashing after 3 seconds, which means the timer setting is finished and the fan will run under the timer setting. The timer symbol will light up.

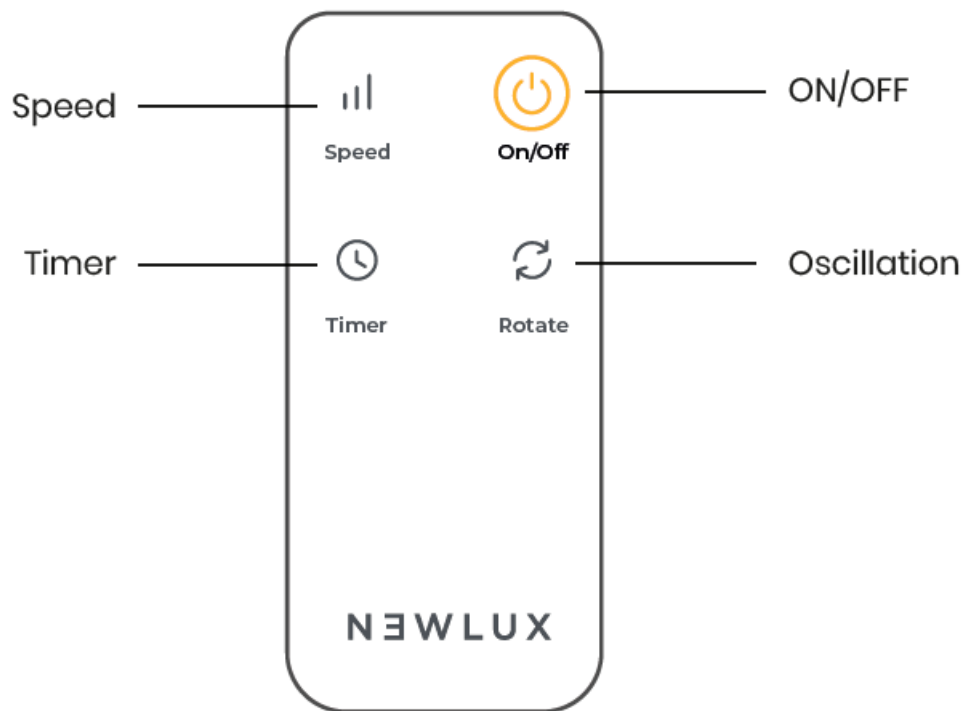
## Range: 1- 18 hours.

The time increases and decreases in 1-hour intervals.

**IMPORTANT::** Unplug the fan from the mains if it is not going to be used for a long period of time.

### Remote control

There are four function keys on the remote control. To operate the device with the remote control, you must point it at the fan. The signal reaches long distances.



### MAINTENANCE AND CLEANING

#### WARNING

Before cleaning the fan, remove the power plug from the outlet.

- Clean the main body with a soft, slightly damp cloth. Do not use abrasive or corrosive products.
- Do not immerse any part of the fan in water or any other liquid. If this occurs, do not dip your hand into the liquid; unplug it from the supply.
- Carefully dry the device and make sure all electrical parts are dry.
- The motor ventilation openings should be kept free of dust and lint.
- If you are not going to use the fan for a while, you should protect it from dust and humidity; we recommend storing it in its original packaging.

### TECHNICAL DATA

- **Dimensions:** 130x42cm.
- **Power:** 45W
- **Voltage (V):** AC220-240V
- **Frequency (F):** 50~60Hz
- **Main material:** PP
- **Blades:** 10 (40cm/16" Ø)
- **Copper motor**
- **Noise level dB:** 58dB
- **Timer:** 18 hours with remote control 7.5 hours on panel
- **Oscillation angle:** 90°, automatic

- **Foldable**
- **Control panel:** LED touch
- **RPM:** 1236
- **Remote control**
- **Cable length:** 1.50 m.
- **Adjustable height:** 130, 100, 70 cm.
- **Speeds:** 3

## WARRANTY

### ACTIVATE THE WARRANTY

- Thank you for purchasing the Newlux WindPure Stand W1050 Smart Stand Fan and have placed trust in our company. each of our Products are guaranteed for 3 years from the date of purchase, provided that the requirements mentioned in the instruction manual of the product.
- In any case, at Newlux we recommend registering the product to activate the guarantee\*.

### TWO WAYS TO ACTIVATE YOUR WARRANTY

#### ONLINE

- [newluxgroup.com](http://newluxgroup.com)

It is essential to send a copy of the purchase invoice so that the guarantee be activated.

#### Activation valid only for Spain

In compliance with current regulations on the Protection of Personal Data We inform you of the incorporation of your personal data, necessary for the development of our commercial relationship, to our files registered with the Agency Spanish Data Protection Agency on behalf of Mark Joint Venture S.L. You can exercise your rights of access, rectification, cancellation and opposition by directing an e-mail to [support@newluxgroup.com](mailto:support@newluxgroup.com), or a letter to Avenida del Rodalet, nº2, 03690, San Vicente del Raspeig (Alicante), clearly specifying the address you want to unsubscribe.

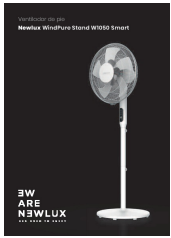
### PRODUCT DISPOSAL NB. DISPOSE OF PRODUCT IN ACCORDANCE WITH DIRECTIVE 2011/65/EC.

At the end of its useful life, you should not dispose of the product as ordinary waste, but take it to a local government waste collection centre or a distributor that provides this service. Disposing of your appliance this way prevents negative consequences for the environment and health, and means the materials can be recovered for significant savings in energy and resources. As a reminder of the need for special disposal of the appliance, it is labelled with a crossed-out rubbish bin.



## Documents / Resources





[NEWLUX W1050 Standing Fan with Remote Control](#) [pdf] User Manual  
W1050, W1050 Standing Fan with Remote Control, Standing Fan with Remote Control, Fan with Remote Control, Remote Control, Control

## References

- [W NewluxGroup – Productos de diseño, honestos, innovadores y de calidad](#)