



DisplayNote Join: Newline NT Series Non-Touch Display User Guide

[Home](#) » [newline](#) » **DisplayNote Join: Newline NT Series Non-Touch Display User Guide** 

The Newline NT Series Non-Touch Display User Guide is designed to provide users with comprehensive instructions on how to use the display and its various features. The guide covers a range of topics, including how to use the home screen menu, the remote control, and the Newline Cast app. It also provides step-by-step instructions on how to connect to Newline Cast using different devices, such as laptops, Android and iOS devices, and web browsers. To connect to Newline Cast, users can download the DisplayNote Windows App from displaynote.com/join on their laptop or use the Google Chrome Browser Extension. The guide also explains how to connect to Newline Cast from an Android or iOS device using the DisplayNote app or AirPlay. With this user guide, users can easily navigate the different features of the Newline NT Series Non-Touch Display and make the most of its capabilities.

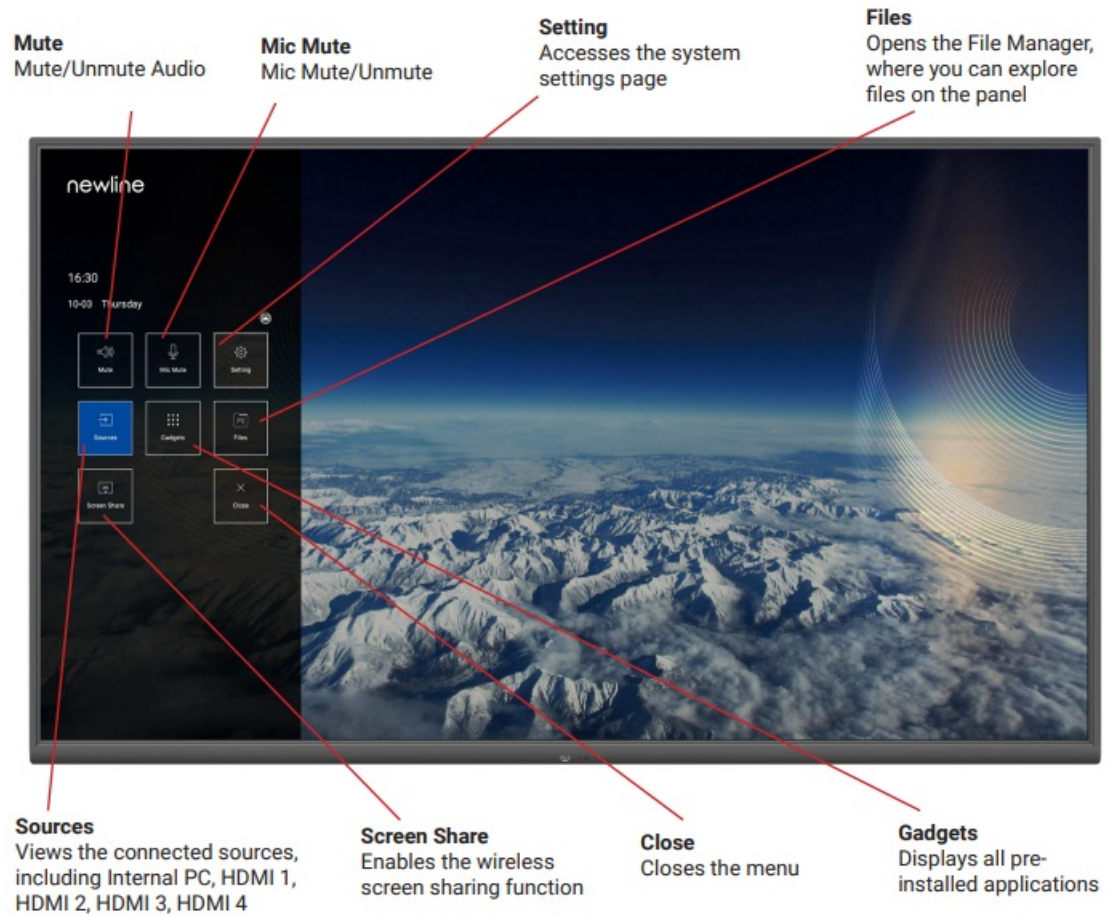
newline®

NT Series Non-Touch Display User Guide

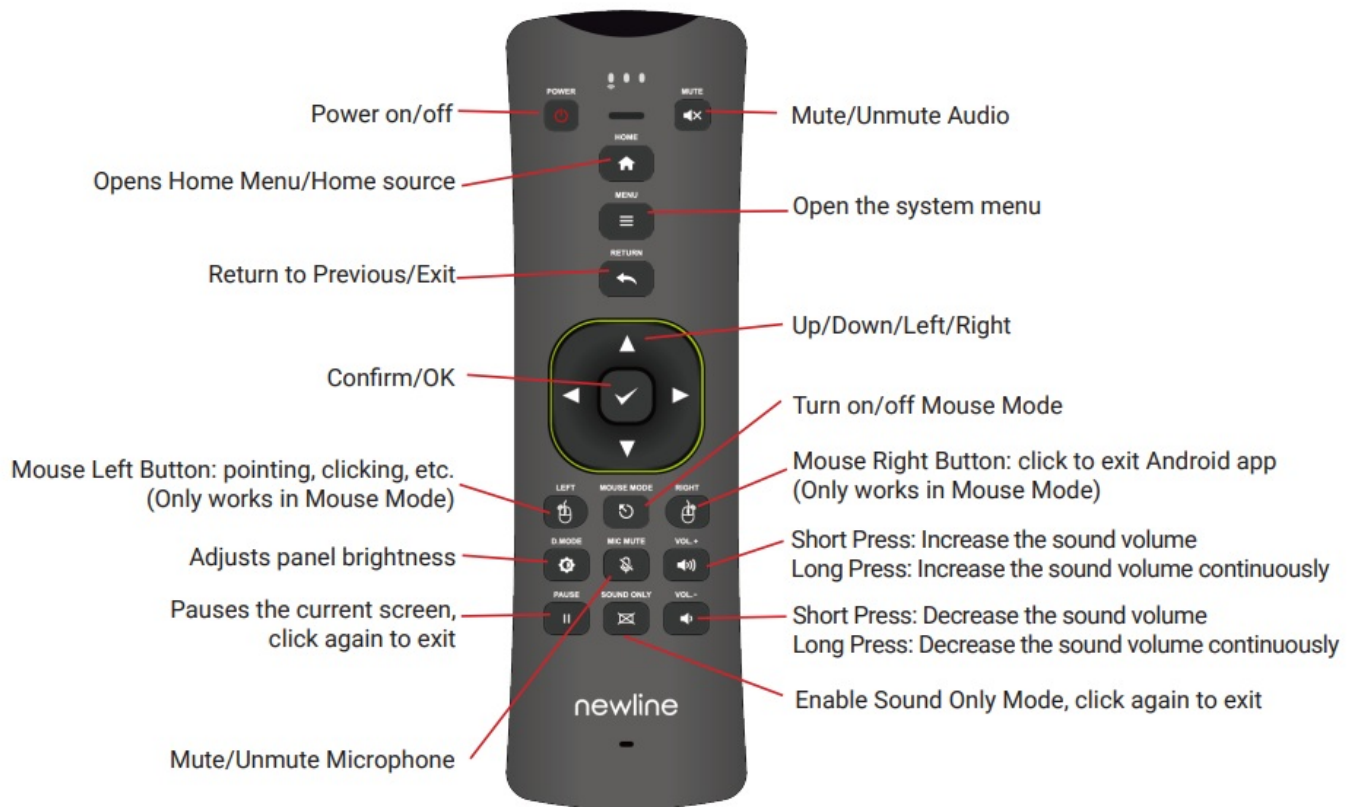
Contents

- [1 Using the Home Screen Menu](#)
- [2 Using the Remote](#)
- [3 Using Newline Cast](#)
- [4 SPECIFICATION](#)
- [5 FAQs](#)
- [6 Documents / Resources](#)
 - [6.1 References](#)
- [7 Related Posts](#)

Using the Home Screen Menu



Using the Remote



Using Newline Cast

Connecting to Newline Cast Using the DisplayNote Windows App

1. Open the Newline Cast app on your display
2. Download the DisplayNote Windows App from displaynote.com/join on your laptop

Connect your laptop...

Get the DisplayNote Montage app to wirelessly share your screen to the main display

Best for performance!



Download for Windows

Version 1.0.0 · Windows 10+

[No admin rights? Get our guest app](#)

OR



Connect via web

[View supported browsers](#)

3. Open the DisplayNote app on your laptop
4. Type in the Session ID you see on the display and your name
5. Select “Join” once both Session ID and Names are filled in

Join the session

Session ID

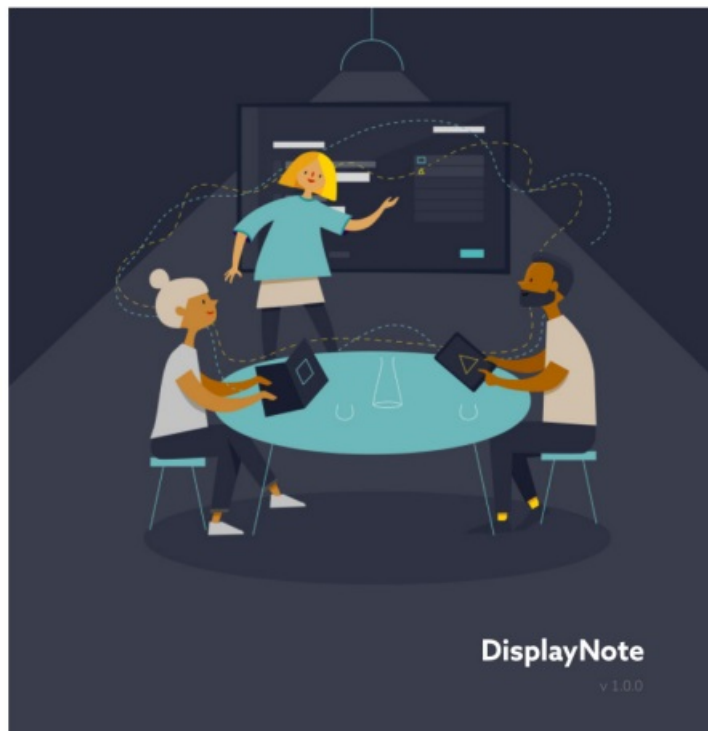
Your Session ID is a 6 or 10-digit number

Your name

Let other attendees know who you are

Join

[Settings](#) · [Need help?](#) · [Privacy policy](#)



Connecting to Newline Cast From a Web Browser

1. Open the Newline Cast app on your display
2. Visit www.displaynote.com/join on your laptop and select “Connect via web”

Connect your laptop...

Get the DisplayNote Montage app to wirelessly share your screen to the main display

Best for performance!



Download for Windows

Version 1.0.0 · Windows 10+

[No admin rights? Get our guest app](#)

OR



Connect via web

[View supported browsers](#)

3. Type in the Session ID you see on the display and your name
4. Select “Join” once both Session ID and Names are filled in

Join the session

Session ID
Your Session ID is a 6 or 10-digit number

Your name
Let other attendees know who you are

[Settings](#) · [Need help?](#) · [Privacy policy](#)


[Join](#)

DisplayNote
v 1.0.0

5. When asked, select whether you want to share your entire screen, or just a specific application window
6. Click “Share”

Connecting to Newline Cast with the Google Chrome Browser Extension

1. Open the Newline Cast app on your display
2. Visit the Google Chrome Store and search Extensions for the DisplayNote Extension
3. Select “Add to Chrome”



DisplayNote Extension

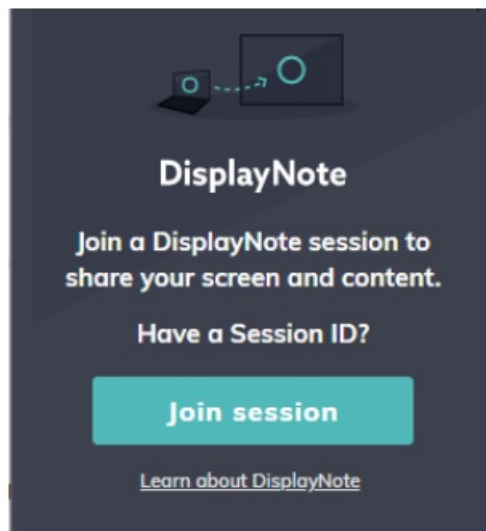
Offered by: displaynote.com

Join a DisplayNote session to share your screen and content.

Productivity

Add to Chrome

- Click the DisplayNote Extension and select “Join session”
- Type in the Session ID you see on the display and your name
- Select “Join”




Get connected

Session ID
Your Meeting ID is a 6-digit number

Your name
Let other attendees know who you are

Connect

An illustration of three people in a meeting. A woman with blonde hair is standing and pointing at a large screen. Two men are sitting at a round table, looking at laptops. Dashed lines connect the people to the screen, suggesting a shared session.

- When asked, select whether you want to share your entire screen or just a specific application window
- Click “Share”

Connecting to Newline Cast From an Android Device

- Open the Newline Cast app on your display
- Make sure your Android is connected to the Internet
- Open the DisplayNote app on your Android device
- Enter the Session ID you see on the display and your name
- Click “Connect”

The screenshot shows a mobile application interface for joining a session. At the top is a black status bar with white text and icons: 'AT&T', 'DN', a signal strength icon, a battery icon, '100%', and '2:19 PM'. Below the status bar is a white rectangular area with a light blue border. Inside this area, the title 'Join a session' is displayed in a large, dark font. Underneath the title, the text 'Session ID' is followed by the instruction 'Your Session ID is a 6 or 10-digit number'. A text input field contains the number '339526'. Below this, the text 'Your name' is followed by the instruction 'Let other attendees know who you are'. A text input field contains the name 'Tim'. At the bottom of the white area is a teal-colored button with the word 'Connect' in white text.

Join a session

Session ID
Your Session ID is a 6 or 10-digit number

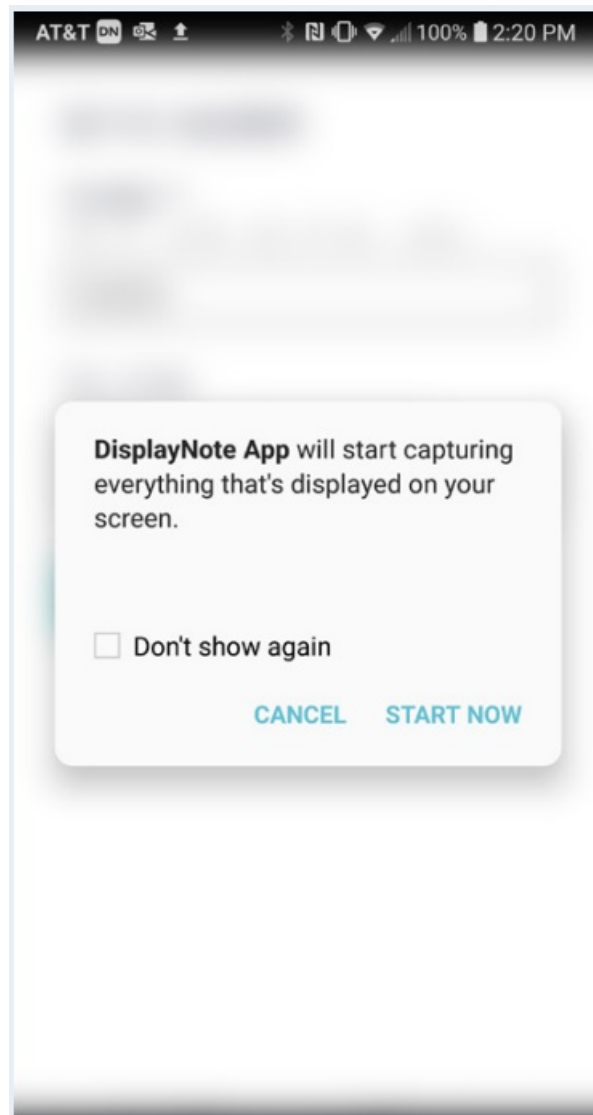
339526

Your name
Let other attendees know who you are

Tim

Connect

6. When asked, select whether you want to share your entire screen or just a specific application window
7. Click "Start Now"



Connecting to Newline Cast from an iOS Device using the DisplayNote App

1. Open the Newline Cast app on your display
2. Make sure your iOS device is connected to the Internet
3. Open the DisplayNote app on your iOS device
4. Enter the Session ID you see on the display and your name
5. Tap "Connect"

10:52 📶 🔋

Join a session

Session ID
Your Session ID is a 6 or 10-digit number

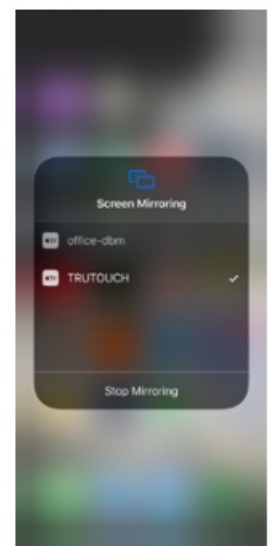
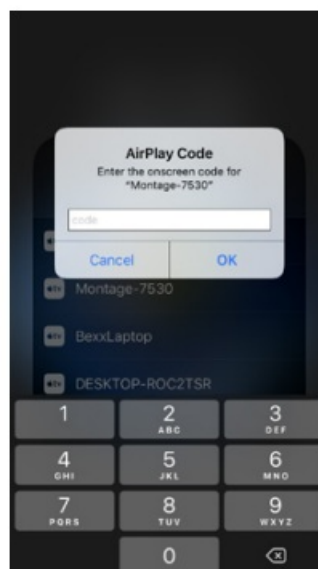
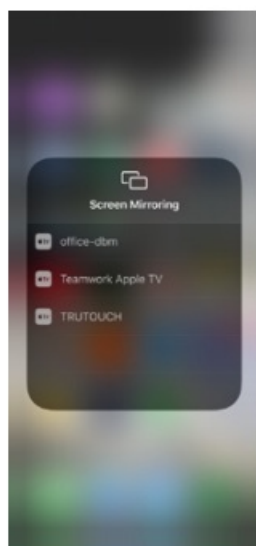
Your name
Let other attendees know who you are

[Connect](#)

[Need help?](#) · [Privacy policy](#) · v1.1.0

Connecting to Newline Cast from an iOS Device using AirPlay

1. Open the Newline Cast app on your display
2. Connect your iOS device to the same WiFi network as the display
3. Select Screen Mirroring on your iOS device
4. Find and tap the name of the display in the Available Devices list
5. In the pop-up window, enter the Session ID you see on the display
6. Tap “Ok”



SPECIFICATION

Product Name	NT Series Non-Touch Display
User Guide	Newline NT Series Non-Touch Display User Guide
Features	Home Screen Menu, Remote Control, Newline Cast App
Connectivity	DisplayNote Windows App, Web Browser, Google Chrome Browser Extension, Android Device, iOS Device
DisplayNote Windows App Connection Process	Open Newline Cast app on display, Download DisplayNote Windows App from displaynote.com/join on laptop, Open DisplayNote app on laptop, Type in Session ID and name, Select "Join"
Web Browser Connection Process	Open Newline Cast app on display, Visit www.displaynote.com/join on laptop and select "Connect via web", Type in Session ID and name, Select "Join", Select screen/application window to share, Click "Share"
Google Chrome Browser Extension Connection Process	Open Newline Cast app on display, Visit Google Chrome Store and search Extensions for DisplayNote Extension, Select "Add to Chrome", Click DisplayNote Extension and select "Join session", Type in Session ID and name, Select "Join", Select screen/application window to share, Click "Share"
Android Device Connection Process	Open Newline Cast app on display, Make sure Android device is connected to internet, Open DisplayNote app on Android device, Enter Session ID and name, Click "Connect", Select screen/application window to share, Click "Start Now"
iOS Device Connection Process (DisplayNote App)	Open Newline Cast app on display, Make sure iOS device is connected to internet, Open DisplayNote app on iOS device, Enter Session ID and name, Tap "Connect"
iOS Device Connection Process (AirPlay)	Open Newline Cast app on display, Connect iOS device to same WiFi network as display, Select Screen Mirroring on iOS device, Find and tap name of display in Available Devices list, Enter Session ID in pop-up window, Tap "Ok"

FAQS

How can users connect to Newline Cast from an iOS device using AirPlay?

Users can connect their iOS device to the same WiFi network as the display, select Screen Mirroring on their iOS device, find and tap the name of the display in the Available Devices list, and enter the Session ID they see on the display in the pop-up window.

How can users connect to Newline Cast from an iOS device using the DisplayNote app?

Users can open the DisplayNote app on their iOS device and enter the Session ID they see on the display and their name.

How can users connect to Newline Cast from an Android device?

Users can open the DisplayNote app on their Android device and enter the Session ID they see on the display and their name.

How can users connect to Newline Cast using a web browser?

Users can visit www.displaynote.com/join on their laptop and select "Connect via web".

How can users connect to Newline Cast using a laptop?

Users can download the DisplayNote Windows App from displaynote.com/join on their laptop or use the Google Chrome Browser Extension.

What topics are covered in the user guide?

The guide covers a range of topics, including how to use the home screen menu, the remote control, and the Newline Cast app.

What is the Newline NT Series Non-Touch Display User Guide for?

The Newline NT Series Non-Touch Display User Guide is designed to provide users with comprehensive instructions on how to use the display and its various features.

newline[®]

Documents / Resources

	newline NT Series Non-Touch Display [pdf] User Guide NT Series Non-Touch Display, NT Series, Non-Touch Display
---	---

References

-  [DisplayNote](#)
-  [DisplayNote](#)