



Contents [[hide](#)]

- [1 Newland NA950S COUNTER POS Terminal](#)
- [2 Specifications](#)
- [3 Product Usage Instructions](#)
- [4 Introduction](#)
- [5 Overview of the Terminal](#)
- [6 Installing Battery](#)
- [7 Installation steps](#)
- [8 Paper Roll Installation](#)
- [9 Switching On/Off the Terminal](#)
- [10 Reading Card](#)
- [11 External connections](#)
- [12 Safety](#)
- [13 Security of Your Terminal](#)
- [14 Standards](#)
- [15 FCC Statement](#)
- [16 Troubleshooting](#)
- [17 FAQs](#)
- [18 Documents / Resources](#)
 - [18.1 References](#)





Specifications

- Model: \$\$4UBUFNFOU
- Features: DIBOHFTPSNPEJDBUJPOT, FYQSFTTMZBQQSPWFE, QBSUZSFTQPOTJCMF, DPNQMJBODFDPVMEWPJEUIF
- Compatibility: VTFSTBVUIPSJUZUPPQFSBUFUIFFRVJQNFOU

Product Usage Instructions

Step 1: Setting Up

- Ensure all components are included in the package. Connect the device to a power source.

Step 2: Operating the Device

- Press the power button to turn on the device. Use the provided interface to navigate through different settings.

Step 3: Troubleshooting

- If you encounter any issues, refer to the user manual for troubleshooting tips. Contact customer support if problems persist.

Packing List

- 1 POS terminal
- 1 user manual
- 1 power supply
- 1 Ethernet Cable
- (Optional) 1 Li-ion battery
- (Optional) 1 USB to RJ11 adapter
- AC plugs shall be subject to the actual supply in the sales area.
- There are three models in total:
 - ADS-12EA-05 05010E. BI 12T-050200-IU
 - ADS-12B-06 05010E

Introduction

- Please check the items when you receive the product, and if there is anything defective or missing, please contact your terminal provider.
- For any other AC Type Plug requirement, please contact your terminal provider.
- This is a new multi-functional POS terminal – N950S.
- It has different optional configurations and accessories.
- Please select for yourself according to this document or the supplier.
- Read this guide to understand and make the best use of your terminal. It presents you the necessary information about use, installation, maintenance, safety and security recommendations.

WARNING

Use only the power adapter included with the product to ensure the best performance and safety. Maintenance should only be provided by a Newland authorized technician. Failure to comply with these instructions will void the manufacturer's responsibility.

Overview of the Terminal



Recommendations

The terminal should be kept away from a very hot zone and protected from vibrations, dust, damp, or electromagnetic radiation (computer screen, wireless intercom, et)

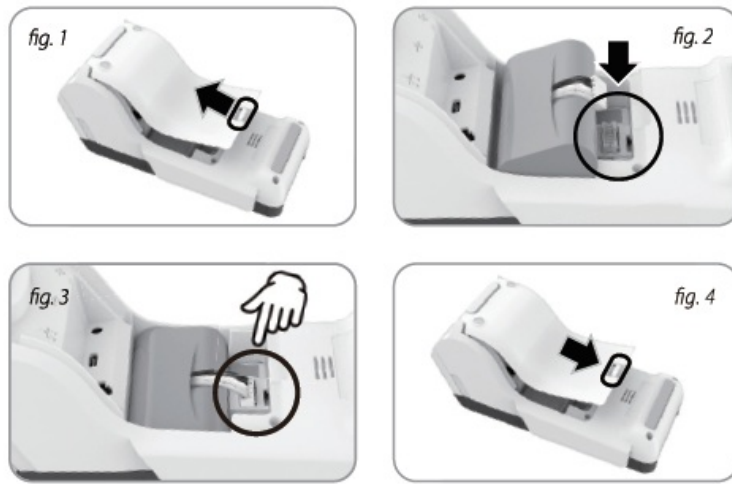
Environment condition

Operating temperature	14°F to 122°F (-10°C ~ 50°C)
Storage and transportation temperature	-4°F to 140°F (-20°C ~ 60°C)
Relative humidity	5% ~ 93% non-condensing at + 104°F (40°C)
Battery charging conditions	32°F to 113°F (0°C ~ 45°C)

Installing Battery

Caution:

1. Make sure that the terminal is powered off and the adapter power is disconnected before installing the battery.
2. Always follow the installation diagram. Improper operation will damage the battery.



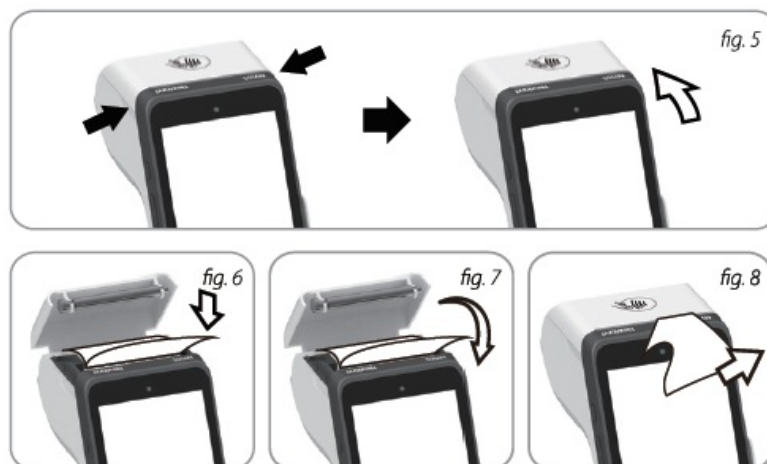
Installation steps

- Step 1: Turn the terminal upside down and push the battery cover in the direction of the arrow to open the battery cover. (Fig. 1)
- Step 2: Insert the battery plug into the socket and put the battery into the battery compartment. (fig.2)
- Step 3: After the battery is installed, press the battery cable to make the cable height lower than the battery. (fig.3)
- Step 4: Cover the battery cover. Fig. .4)

Disassembly steps

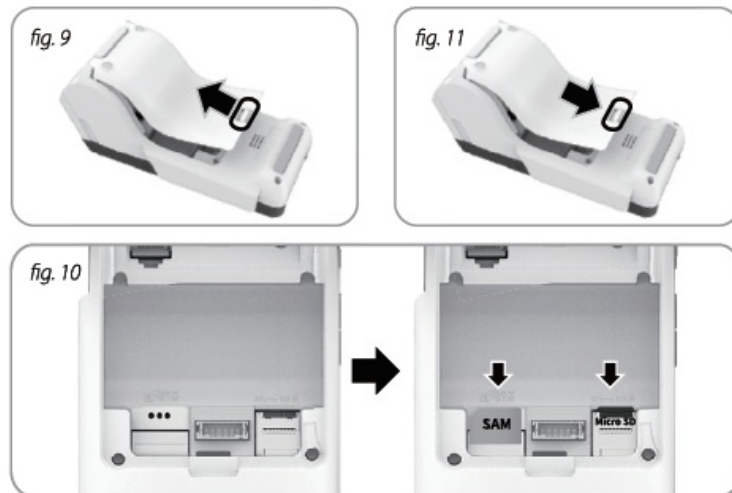
- Reverse the above steps.

Paper Roll Installation



- Step 1: Open the paper roll cover.(Fig. 5)

- Step 2: Insert the paper roll in the compartment following the directions shown on the picture, and pull 5cm of paper until it protrudes from the top of the terminal. (fig.6)
- Step 3: Maintain the paper and close the lid cover until the click sound is heard. (Fig. 7)
- Step 4: Remove the excess paper by tearing along the serrated edge. (fig.8)



Warning:

Make sure that the terminal is powered off and the adapter power is disconnected before installing the SAM/Micro SD card.

- Step 1: Turn the terminal upside down and open the battery cover. You should remove the battery first if there is a battery. (fig.9)
- Step 2: According to the SAM/Micro SD card position of the engraved marks in the lower housing, load the required card. Be sure to put the cut corner as indicated on the engraved marks. (fig.10)
- **Note:** SAM/Micris is selected subject to the product configuration.
- Step 3: Replace the battery and cover, then turn the terminal facing up.. (Fig. 11)

Charging the Battery(Optional)

Warning:

1. Only original batteries and power adapters can be used. Using other batteries or power adapters may cause damage to the device and battery, or even an explosion.
2. Do not put device with lithium batteries into fire or exposed to high temperatures for a

long time, must be away from heat sources, such as sun, heater, microwave oven or water heater.

Overheating of the battery may cause an explosion.

3. If the lithium battery is soaked, the lithium battery cannot continue to be used; water in the lithium battery may cause a fire.
4. It is recommended to unplug the charger after full charge in normal use to avoid long-term charging or long-term high power state to accelerate the aging of the lithium battery to extend the battery life.
5. If the device has not been used for more than 1 month, please take out the battery and charge the lithium battery every 3 months to keep it at 50%-80% power.

Switching On/Off the Terminal

- Power on: Press the power button for about 2 seconds till the LCD is lit to switch on.
- Power off/Reboot: Press and hold the power button to see a pop-up window, touch the screen to select
- “Power off” to power off the terminal. (Or to select
- “Reboot” and then “OK” to reboot the terminal.)
- **Note:** If there is a crash, please press power button for about 10 seconds to reboot the terminal forcibly, or re-plug the battery then boot the terminal.

Reading Card

Smart card

Insert the chip card into the terminal as shown by the arrow on the slot with its contact surface (chip) facing up. Do not remove the chip card during the transaction.

Magnetic stripe card

Swipe the magnetic card along the slot with its band facing to terminal. Keep the swiping speed uniform as much as possible. It is allowed to swipe the magnetic card from top to bottom or from bottom to top. Use a regular movement in order to ensure a reliable card reading.

Contactless card

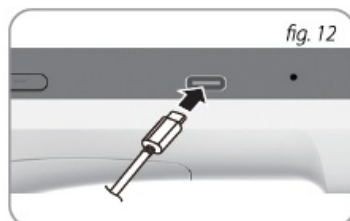
Bring the card firmly up to the RFID reader, keep the card close to the reader during the

transaction. The LED indicator at the upside of the LCD will indicate the transaction state during the transaction.



External connections

1. Connect the C and the POS terminal (fig. 12) for maintenance and download.
2. Connect the power adaptor (fig. 13) to the charging port.
3. Connect Ethernet Cable (fig. 14) to the Internet.
4. Connect USB peripherals. If you need to connect other peripherals, please contact the terminal providers. (fig.15)



Warning:

Do not connect any peripheral equipment that has not been authenticated by Newland to avoid damage.

Safety

1. Please be sure to comply with the specifications in this document.
2. Do not use in proximity of potentially flammable gases or substances.
3. Do not disassemble the terminal, power adapter, or battery.
4. Cut off the power immediately when there is an unusual smell, overheating, or smoke.
5. There is a risk of explosion if the battery is incorrectly replaced or is placed in a fire.
Life-ended batteries must be disposed of at the appropriated sites.
6. Do not use in a near-water or humid environment to prevent liquid from entering the device.
7. Do not use the terminal in extremely cold or hot zones, such as near a fire.
8. Do not drop, throw, or bend the device.
9. Use in a clean environment to avoid the entry of small objects into the POS.
10. Do not use near hospital equipment without permission.
11. Do not use terminals with radio communication on or near the aircraft, or in any other place where radio communication is prohibited.

Security of Your Terminal

Your terminal fulfills the current applicable PCI PTS security requirements. Upon receipt of your terminal you should check for signs of tampering. It is strongly advised that these checks are performed daily after receipt (Be sure the circumstance is brightness or you may use a light tool as well).

1. Check the product name and the hardware version on the label to ensure the product is correct.
2. Check if there are bugs hidden in the IC card slot before the IC card is inserted.
3. Check whether the magnetic card slot has the exception of adding a magnetic head.
4. Check the appearance of the product to guarantee that the device was not modified.
5. This is a handheld device, not allowed to be fixed on the wall.
6. Before entering the PIN, the user should be aware of his/her surrounding and use the

body, fingers or protection to block the voyeur's sight.

Standards

CE Marking

The CE marking indicates N950S complies with the requirements of European Directive 2014/53/EU of 16 April 2014 on Radio and Telecommunications Terminal Equipment for:

1. The protection of the health and the safety of the user and any other person.
2. The protection requirements concerning electromagnetic compatibility.

5 GHz band (W52, W53): Indoor use only



BE	BG	CZ	DK	DE	EE	IE	EL
ES	FR	HR	IT	CY	LV	LT	LU
HU	MT	NL	AT	PL	PT	RO	SI
SK	FI	SE	NO	IS	LI	CH	TR

FCC Statement

1. Any Changes or modifications not expressly approved by the party responsible for compliance could void the user's authority to operate the equipment.
2. This device complies with part 15 of the FCC Rules.

Operation is subject to the following two conditions:

1. This device may not cause harmful interference, and
 2. this device must accept any interference received, including interference that may cause undesired operation.
3. This equipment complies with the FCC radiation exposure requirements set forth for an uncontrolled environment.
 4. This equipment has been tested and found to comply with the limits for a Class B digital device, under part 15 of the FCC Rules. These limits are designed to provide reasonable protection against harmful interference in a residential installation. This equipment generates, uses, and can radiate radio frequency energy and, if not installed and used according to the instructions, may cause harmful interference to radio communications. However, there is no guarantee that interference will not occur in a particular installation. If this equipment does cause harmful interference to radio or

television reception, which can be determined by turning the equipment off and on, the user is encouraged to try to correct the interference by one or more of the following measures:

- Reorient or relocate the receiving antenna.
- Increase the separation between the equipment and receiver.
- Connect the equipment to an outlet on a circuit different from that to which the receiver is connected.
- Consult the dealer or an experienced radio/TV technician for help.

Specific Absorption Rate (SAR) information SAR tests are conducted using standard operating positions accepted by the FCC with the device transmitting at its highest certified power level in all tested frequency bands, although the SAR is determined at the highest certified power level, the actual SAR level of the device while operating can be well below the maximum value. Before a new product is available for sale to the public, it must be tested and certified to the FCC that it does not exceed the exposure limit established by the FCC. Tests for each POS Terminal are performed in positions and locations as required by the FCC.

Troubleshooting

The terminal does not turn on

1. Check that the battery is installed correctly
2. Please charge the battery to check if it is fully discharged.

II. Battery life is significantly reduced

1. Check if the battery is fully charged.
2. Battery life expires. Please replace the battery.

III. Can't read the magnetic card, or the card swiping has a low success rate

1. Check that the magnetic card is swiped correctly (with magnetic band on terminal side).

2. Check if there are any bugs or dirt on the magnetic head. Please clean it.

IV. IC cards can't be read

1. Make sure you have inserted the Chip card correctly into the chip card reader (with the chip facing up).
2. Check if the card slot is blocked or if the card is in the correct position.

V. Ticket cannot be printed or printed incompletely

1. Check the presence and proper positioning of the paper roll.
2. Check the type of name used is correct.

- ©2023 Fujian Newland Payment Technology Co., Ltd. All rights reserved.
- This guide is for reference only. The actual product, including but not limited to color, size, and screen layout, may vary. All statements, information, and recommendations in this guide do not constitute a warranty of any kind, express or implied.
Fujian Newland Payment Technology Co., Ltd. retains full copyright ownership, rightssand protection in this guide. No part of this guide may be added toeto d or, deleted, excerpted, reproduced, , who whollytially,n wholly ior in any form or by any means without the prior written consent of Fujian Newland.
- Payment Technology Co., Ltd. and its affiliates.
- Fujian Newland Payment Technology Co., Ltd. No. B602, Building #1, Haixia Jingmao Plaza Fuzhou Bonded Area 350015, Fujian, China
- <http://www.newlandpayment.com>

FAQs

Q: How do I reset the device?

A: To reset the device, locate the reset button on the back and press it with a pin for 10 seconds.


Q: Can the device be used without an internet connection?

A: Yes, the device can be used offline for certain functions. However, some features may require an internet connection.

Q: Is the device compatible with all operating systems?


A: The device is compatible with most major operating systems. Check the user manual for specific compatibility details.

Documents / Resources


	Newland NA950S COUNTER POS Terminal [pdf] User Guide 2AM6U-NA950S, 2AM6UNA950S, NA950S-C, NA950S COUNTER POS Terminal, COUNTER POS Terminal, POS Terminal, Terminal
---	--

References

- [User Manual](#)



Newland



2AM6U-NA950S, 2AM6UNA950S, COUNTER POS Terminal, NA950S COUNTER POS Terminal, NA950S-C, Newland, POS Terminal, Terminal

—Previous Post

[Newland P180 POS Terminal User Guide](#)

Leave a comment

Your email address will not be published. Required fields are marked *

Comment *

Name

Email

Website

☐ Save my name, email, and website in this browser for the next time I comment.

Post Comment

Search:

Search

[Manuals+](#) | [Upload](#) | [Deep Search](#) | [Privacy Policy](#) | [@manuals.plus](#) | [YouTube](#)

This website is an independent publication and is neither affiliated with nor endorsed by any of the trademark owners. The "Bluetooth®" word mark and logos are registered trademarks owned by Bluetooth SIG, Inc. The "Wi-Fi®" word mark and logos are registered trademarks owned by the Wi-Fi Alliance. Any use of these marks on this website does not imply any affiliation with or endorsement.