



NeweggBusiness BT181 Bluetooth Numeric Keypad User Manual

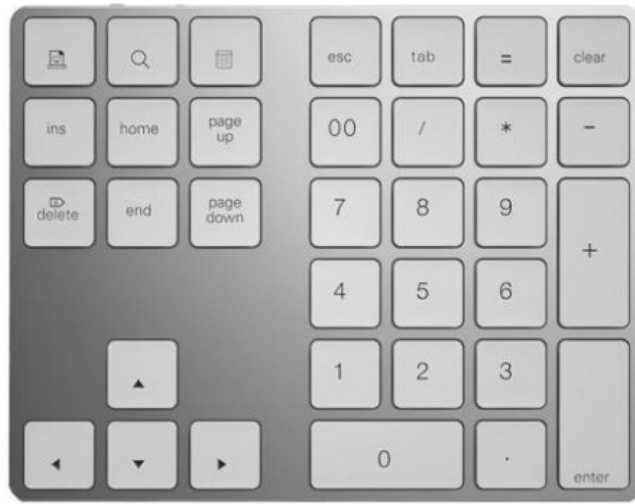
[Home](#) » [NeweggBusiness](#) » NeweggBusiness BT181 Bluetooth Numeric Keypad User Manual 

Contents

- 1 NeweggBusiness BT181 Bluetooth Numeric Keypad
- 2 Bluetooth Pairing Operation Instruction for OS
- 3 Bluetooth Pairing Operation Instruction for Windows
- 4 Keypad Maintenance
- 5 Hotkeys of keypad
- 6 Technical Specifications
- 7 Status Display LED
- 8 Troubleshooting
- 9 Warranty Card
- 10 FCC STATEMENT
- 11 Specifications
- 12 FAQ
- 13 Documents / Resources
 - 13.1 References

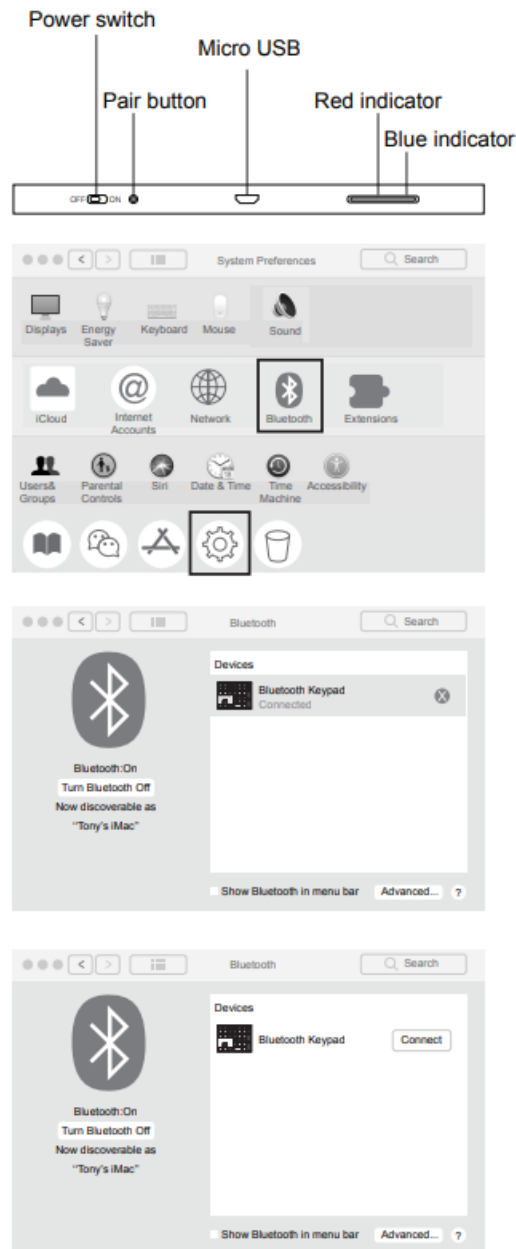


NeweggBusiness BT181 Bluetooth Numeric Keypad



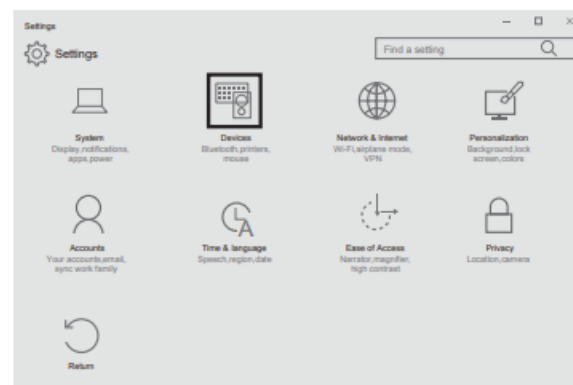
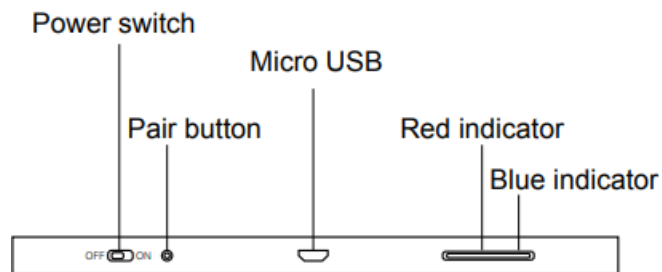
Bluetooth Pairing Operation Instruction for OS

1. Turn the power switch to green side, blue indicator will be on, press pair button, the bluetooth keypad will enter pairing condition while the blue indicator keep flashing.
2. Power on the iMac/Macbook and select the setting icon on the screen, click it to enter the system preferences list.
3. Click the Bluetooth icon to enter the iMac bluetooth device searching condition.
4. In the iMac bluetooth device searching list, you can find the "Bluetooth Keypad", click it to connect .
5. After the iMac connect the Bluetooth keypad successfully, you can start to use the keypad for typing freely.
6. In connected condition, if the blue indicator keep flashing, please use the charging cable to charge the keypad till the red indicator off.

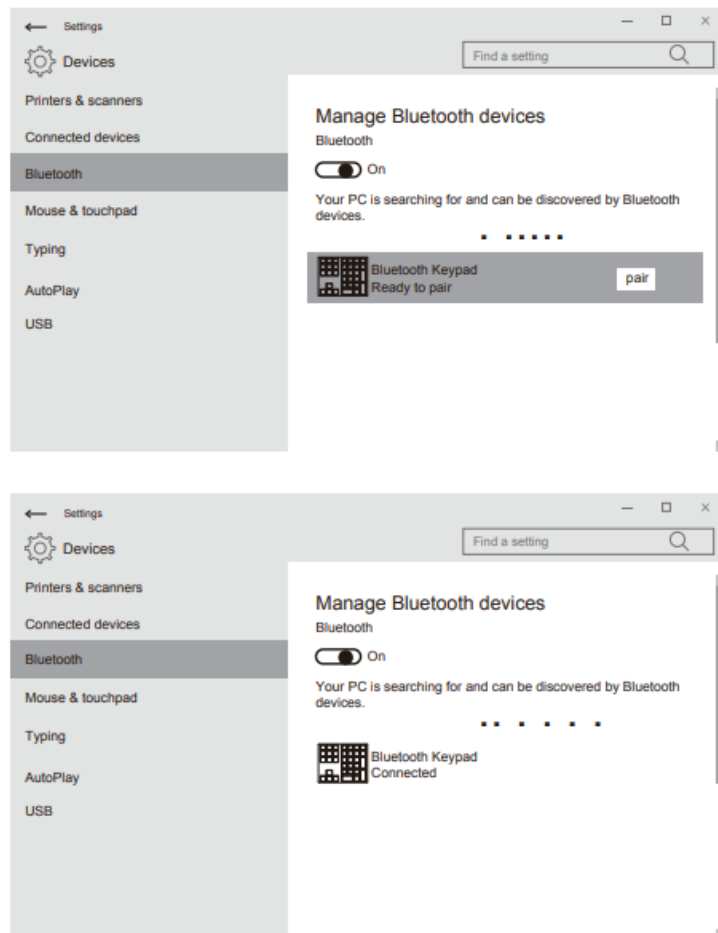


Bluetooth Pairing Operation Instruction for Windows

1. Turn the power switch to the green side, blue indicator will be on, press the pair button, and the bluetooth keypad will enter pairing condition while the blue indicator keeps flashing.
2. Power on the laptop or desktop and start the windows, click the windows icon in the left bottom side, and select and click the setting icon in the show-up menus.
3. In the setting menu, select and click the devices icon, then select and click the Bluetooth in the devices list, you will enter the bluetooth device menu.



4. Turn on the bluetooth and click the symbol “+” to add a new bluetooth device, the laptop or desktop will enter the searching condition.
5. In the bluetooth device searching list, you can find the “Bluetooth Keypad”, click it to connect
6. After the laptop or desktop connects to the bluetooth keypad successfully, you can start to use the keypad for typing freely.
7. In connected condition, if the blue indicator keeps flashing, please use the charging cable to charge the keypad till the red indicator is off.



Note


1. This keypad is perfect for smartphones, laptops, desktops and tablets, compatible with Windows, Android, iOS, and OS operation systems;
2. Please charge the keypad about 2 hours before use;
3. Please read the user manual carefully before you start using this product

Keypad Maintenance

1. Please keep the keypad away from liquid or humid environments, saunas swimming pools, and steam rooms, and don't let the keypad get wet in the rain.
2. Please don't expose the keypad at too high or too low-temperature conditions.
3. Please don't put the keypad under sun for a long time.
4. Please don't put the keypad close to the flame, such as cooking stoves, candles or a fireplace.
5. Avoid sharp objects scratching products, and timely to recharge products to ensure normal use.

Hotkeys of keypad

This keypad provides hotkeys of the top cover.

- : Print Screen
- : Search



- **Calculator icon**: Activate the calculator application(only in Windows)
 - **Esc**: Same as Esc key function (when the calculator is open, it indicates reset)
 - **Tab**: Tabulator key for Windows, to activate the bluetooth keypad in iOS calculator input Function key features may have variations depending on the operation system version and devices

Technical Specifications

- **Keypad size**: 146*113*12mm
- **Weight**: 124g
- **Working distance**: ~10m
- **Lithium battery capacity**: 110mAh
- **Working voltage**: 3.0~4.2V
- **Operation current**: <3mA
- **Standby current**: <0.5mA
- **Sleep current**: <10uA
- **Sleep time**: 20 minutes
- **Awaken way**: Arbitrarily key to awaken

Status Display LED

- **Connect**: In power on condition, the blue light keep flashing when it enter pair status.
- **Charging**: In charging conditions, the red indicator light will be on until the battery is fully charged.
- **Low Voltage Indication**: When the voltage is below 3.2V, blue light twinkles.
- **Remarks**: In order to prolong the life span of the battery, when you do not use the keypad for a long time, please switch off the power.

Troubleshooting

Please contact the after-sales service.

Copyright

It is forbidden to reproduce any part of this quick start guide without the permission of seller.

Safety instructions

Do not open or repair this device, do not use the device in a damp environment. Clean the device with a dry cloth.

Warranty

The device is provided with one-year limited hardware warranty from the purchase day.

Warranty Card

- User information
- Company or personage full name
 - TEL
 - Zip

The purchased product name and model NO.

- Purchased date

This reason due that the product is broken and damage is not include in the warranty.

1. Accident, misuse, improper operation, or any unauthorized repair, modified or removed
2. Improper operation or maintenance, when operation violation of the instructions or connection unsuitability power supply

Certification

- Inspection:
- Production:

FCC STATEMENT

This device complies with Part 15 of the FCC Rules. Operation is subject to the following two conditions: (1) this device may not cause harmful interference, and (2) this device must accept any interference received, including interference that may cause undesired operation

NOTE: This equipment has been tested and found to comply with the limits for a Class B digital device, pursuant to Part 15 of the FCC Rules. These limits are designed to provide reasonable protection against harmful interference in a residential installation. This equipment generates, uses, and can radiate radio frequency energy and, if not installed and used in accordance with the instructions, may cause harmful interference to radio communications. However, there is no guarantee that interference will not occur in a particular installation. If this equipment does cause harmful interference to radio or television reception, which can be determined by turning the equipment off and on, the user is encouraged to try to correct the interference by one or more of the following measures:

- Reorient or relocate the receiving antenna.
- Increase the separation between the equipment and the receiver.
- Connect the equipment into an outlet on a circuit different from that to which the receiver is connected.
- Consult the dealer or an experienced radio/TV technician for help.

Warning: changes or modifications not expressly approved by the party responsible for compliance could void the user's authority to operate the equipment The devices have been evaluated to meet general RF exposure requirements, and the device can be used in portable exposure conditions without restriction.

Specifications

- Power switch
- Micro USB port
- Pair button
- Red and Blue indicator lights

FAQ

The tablet PC can't connect to the BT keypad?

- Checking the BT keypad battery is enough, the battery low is also leads to can't to connect, and you need to charge.


The keypad indication light always flashing when use?

- Keypad indication always flashing when used, it means the battery is low power, please charge the keypad as soon as possible.

The table PC display BT keypad is the disconnect?

- The BT keypad will into dormant to save the battery after some time later not use it, press any key the BT keypad will reawaken and working.

Documents / Resources

| | |
|--|--|
|  | NeweggBusiness BT181 Bluetooth Numeric Keypad [pdf] User Manual 2BM97-BT181, 2BM97BT181, bt181, BT181 Bluetooth Numeric Keypad, BT181, Bluetooth Numeric Keypad, Numeric Keypad, Keypad |
|--|--|

References

- [User Manual](#)

[Manuals+](#), [Privacy Policy](#)

This website is an independent publication and is neither affiliated with nor endorsed by any of the trademark owners. The "Bluetooth®" word mark and logos are registered trademarks owned by Bluetooth SIG, Inc. The "Wi-Fi®" word mark and logos are registered trademarks owned by the Wi-Fi Alliance. Any use of these marks on this website does not imply any affiliation with or endorsement.