

Newbealer NB603C Steam Mop User Manual

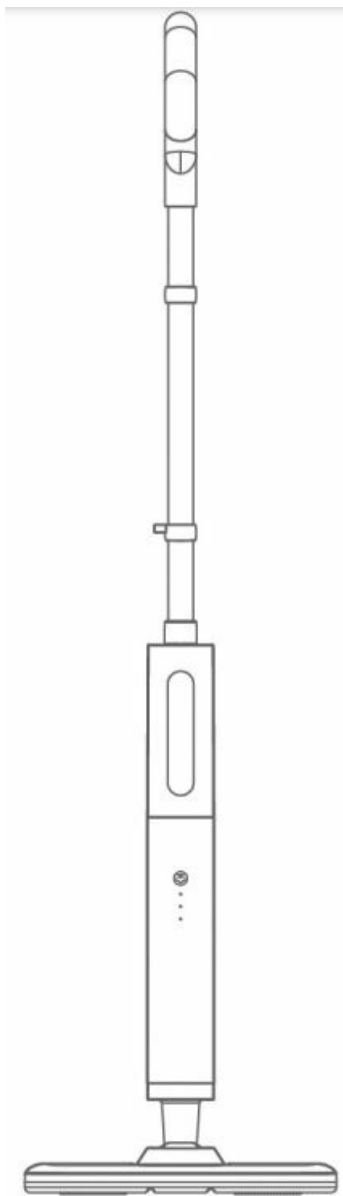
[Home](#) » [Newbealer](#) » Newbealer NB603C Steam Mop User Manual 

Contents

- 1 Newbealer NB603C Steam Mop
- 2 SAFETY INSTRUCTIONS
- 3 SPECIFICATIONS
- 4 PRODUCT DETAILS
- 5 Assembling
- 6 ACCESSORIES
- 7 OPERATION INSTRUCTIONS
- 8 MAINTENANCE
- 9 Storage
- 10 TROUBLESHOOTING
- 11 WARRANTY
- 12 Documents / Resources
 - 12.1 References

Newbealer

Newbealer NB603C Steam Mop



SAFETY INSTRUCTIONS

- **WARNING!** Please read and understand all safety precautions and operating instructions before operating this appliance. Improper usage of the product can result in damage to the product or serious injury to the user.
- Please use the correct supply voltage: 120V/60Hz. Do not share the same power supply with other high-power appliances
- Never touch any of the attachments while the steamer is in use, as they will be very hot and could burn skin.
- Do not allow steam to be sprayed onto devices that contain electrical components
- Never use the device without water in the tank.
- The mop pad must be placed on the bottom of the mop head before use. The mop pad can be used to wipe the floor and also protect the floor.
- Ensure the tank cap is securely closed before powering on the device to avoid a leak.
- Ensure the attachment you want to use is securely connected before powering on the device.
- Do not overfill the water tank. The maximum capacity is 17 fl. oz. (500 ml) of water. Excessive filling of the water tank may cause malfunctions, property damage, or injury.
- Do not use any cleaners or chemicals in the water tank.
- Do not submerge the device or power cord in water or any other liquid.

- Do not place the power cord close to the surface of a hot object to avoid damage.
- If the power cord is damaged, it must be confirmed by a designated service center staff member or an equivalent electrician.
- If the product is damaged or malfunctioning, please stop using it. Never disassemble the product on your own. Please contact the after-sales service department.
- Keep the device and its power cord out of reach of children. Cleaning and maintenance should not be done by children or people unfamiliar with the device.
- Do not leave this device unattended when connected to power.
- Always disconnect the device when not in use, left unattended, after use, and before servicing. Stop all controls before unplugging.
- This device will remain hot after unplugging it. Allow the device to cool down before handling.
- This product is suitable for the surface of high-temperature resistant materials. Do not use it on unsealed wooden floors and unglazed tiles.
- Only use accessories and replacement parts that are approved by our company. Using incompatible accessories may result in a safety risk to the user.

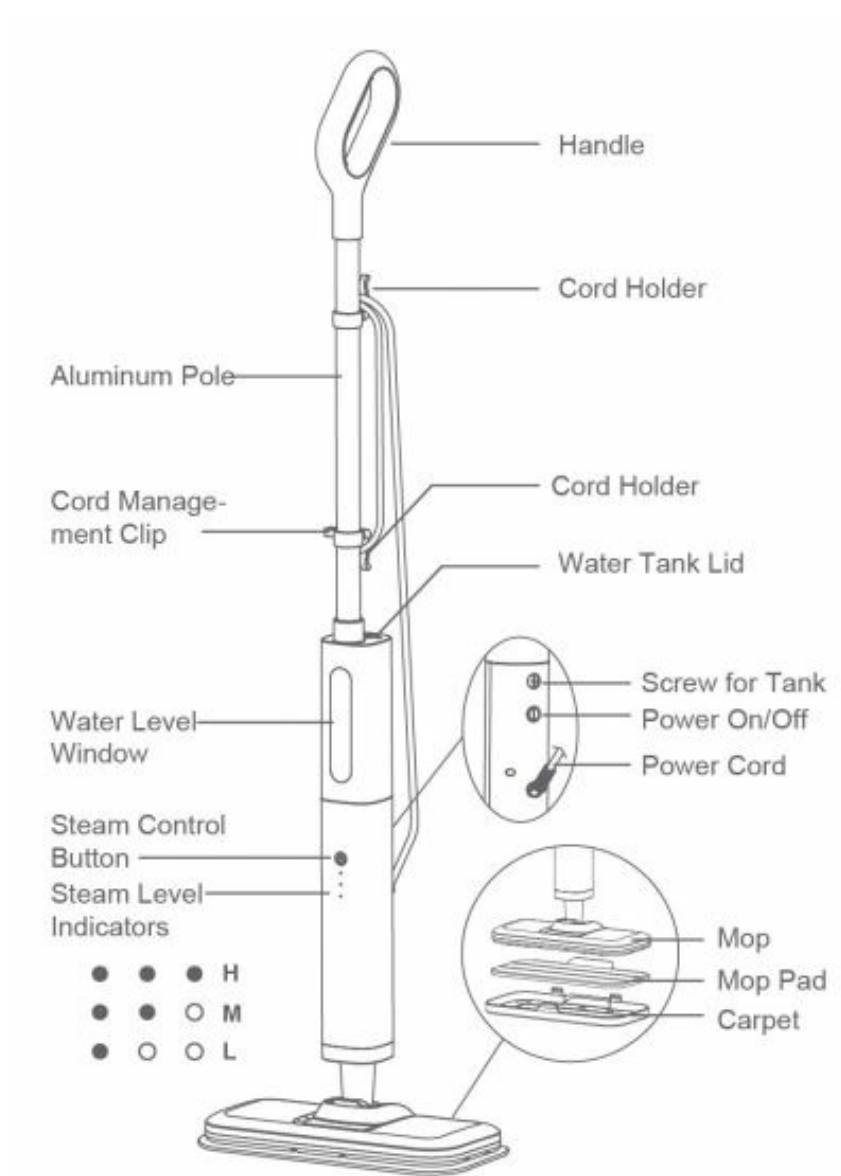
Your Steam Mop is designed to clean hard floor surfaces that will withstand high heat. DO NOT use on unsealed wood or unglazed ceramic floors. On surfaces that have been treated with wax and on some no- wax floors, the sheen may be removed by the heat and steam action. ALWAYS test an isolated area of the surface to be cleaned before proceeding. We also recommend that you check the use and care instructions from the floor manufacturer.

SPECIFICATIONS

Product: Steam Mop	Rated Power: 1200W
Model: NB603C	Rated Voltage: AC 120V ~ 60Hz
Heating Time: 15 seconds	Tank Capacity: 17oz 1500ml
Working Time: 15-30 min	Steam Temperature: 120°C(248°F)
Net Weight: 3.751b	Power Cord Length: 16ft

PRODUCT DETAILS

Parts Identification



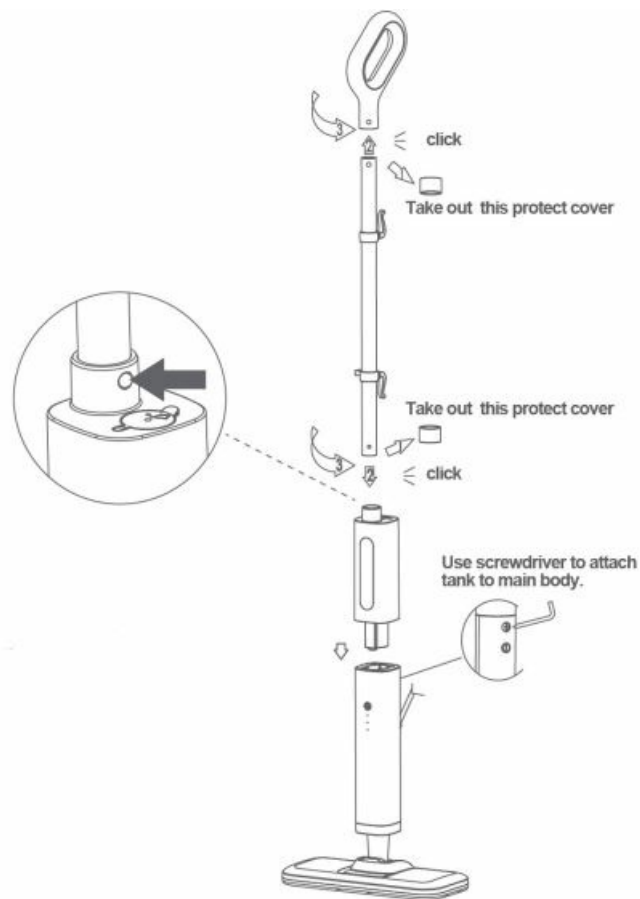
Packing List



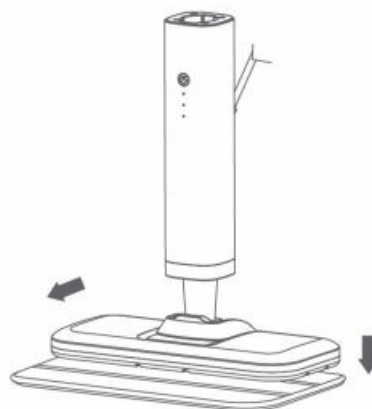
When assembling your Steam Mop there may be a little water in or around the water tank. This is because we test all our Steam Mops before you buy them, so you get a quality Newbealer Mop.

Assembling

TO REMOVE the 3 parts of Mop, press the release button on front of the mop.



1. Verified all the listed part are included.
2. Press the release button and insert the mop handle into the pole and the pole into the water tank body. Push them in separately until they click into place.
3. Insert the tank into the main body and use a screwdriver to lock it in place.
4. Install the mop pad



- Lay the microfiber pad on a flat surface with the two fastener strips facing up
 - Align the mop head directly over the microfiber pad.
 - The fastener strips will adhere to the pad grips on the bottom of the mop head
5. Install the carpet glider



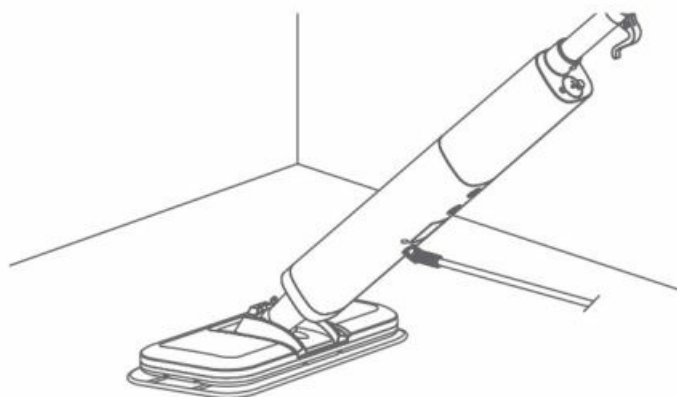
- Set the carpet glider on the carpet with the smooth side down.
- Place the mop head, with the cleaning pad attached, on top of the carpet glider.

ACCESSORIES

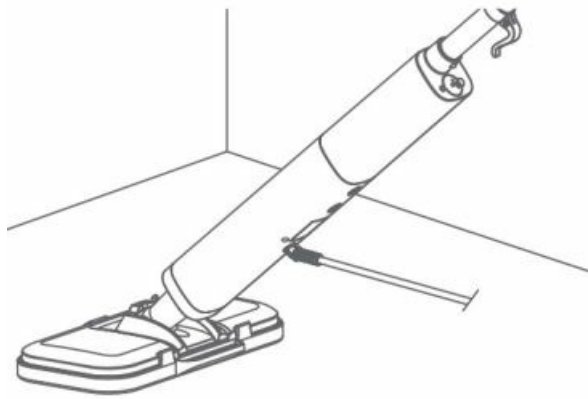
USING DIFFERENT ACCESSORIES

Mop Pads- The reusable microfiber pads are perfect for deep cleaning these hard floor surfaces:

- Sealed Hardwood
- Stained Concrete
- Sealed Laminate
- Linoleum
- Glazed Ceramic
- Granite
- Marble
- Vinyl
- Tile

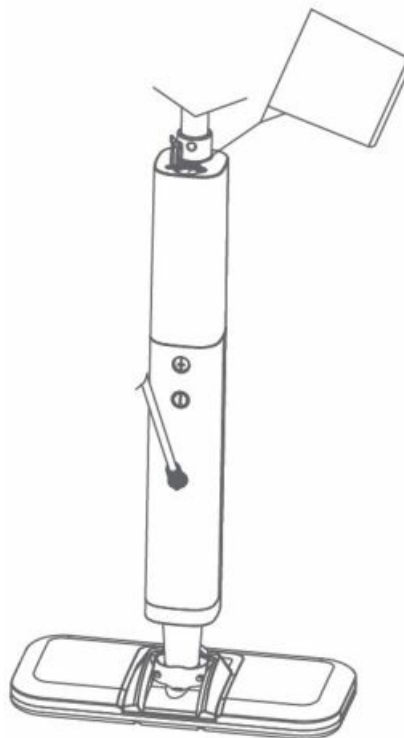


Carpet Glider- Suitable for cleaning carpets.



BEFORE USE

1. Please ensure that the power supply voltage matches the nominal voltage calibrated on the steam mop.
2. Fill the Water Tank Pull down the water tank lid and use the filling flask to pour water into the water tank. Press the water tank lid firmly to close it. Make sure not to overfill the tank. The maximum water capacity of this device is 17 fl. oz. (500 ml).



WARNING

We recommend you add distilled water to the water tank. Never put descaling, alcoholic, or detergent products into the steam mop, as this may damage it or make it unsafe for use.

OPERATION INSTRUCTIONS

Important Note for Button Functions:



Power Switch:

- To turn on/off the unit, locate the power switch at the backside. Please ensure to press the power switch firmly



for proper activation. You will hear a distinct click sound confirming that it is securely in place.




Steam Button:

- The steam button, located on the frontside, allows you to switch between three different levels. Simply apply a short, quick press to toggle among the available options.



1. Connect the Power Supply With the water tank filled and the selected attachment connected, unwrap the power cord from cord holders and plug it into an electrical outlet.
 - If you unplugged the unit after turning off the power switch last time, plug the unit back in and then turn on the power switch to start heating the unit.
 - If you unplugged the unit directly last time, plug it in and the steam mop will begin to heat up at once.
2. As the device begins to heat up, the 3 lights below the Steam Control Button begin a cycling glow.
3. After about 15 seconds, the 3 lights will blink to indicate Standby mode. Press the steam button  to start working.
 - For the first use, the MED steam level is selected by default.
 - Short press the button briefly to switch between steam levels.
4. Press the Steam Control Button  to select your desired steam level. High steam (Deep cleaning heavy traffic areas), Medium steam (regular cleaning), Low steam (delicate floors).
 - Minimum level: One light
 - Middle level: Two lights
 - Maximum level: Three lights
5. Begin cleaning by slowly passing the unit on floor surface.
6. Once complete, hold the steam button for two to three (2-3) seconds to stop the flow of steam.

7. After finish cleaning, you can short press the power button  off the unit or unplug the steam mop from outlet. on the backside to power

WARNING

The steamer will remain hot after being powered off or unplugged. Please allow the device to cool down before handling.

Intelligent Steam Control

The Newbealer Steam Mop System has 3 unique Intelligent Steam Control settings so you can use the right amount of steam for the cleaning task at hand. See below for tips on when to use each setting.

SETTING		IDEAL FOR THESE SEALED SURFACES	RECOMMENDED USAGEES
LOW	 ● ○ ○	Laminate Hardwood Marble	Cleaning delicate surfaces Light cleaning and dusting Loosening and lifting light dirt
MED	 ● ● ○	Hardwood Marble Tile Stone	Cleaning sealed surfaces and large areas Basic, everyday cleaning Removing spots and smaller messes Cleaning moderate and heavy traffic areas
HI	 ● ● ●	Tile Stone Hardwood Marble	Reaching hard-to-clean surfaces Tough cleaning and removing stuck-on messes and stains Deep cleaning heavy traffic areas Cutting through heavy dirt and grime Sanitizing* floors

Water shortage


When the water tank is empty, the Steam Mop will stop producing steam. You can refill the water tank at any time as long as the Steam Mop is powered off.

WARNING

It is strictly forbidden to let the water tank of the machine work without water at any time, which will cause damage to the machine.

MAINTENANCE

After Use

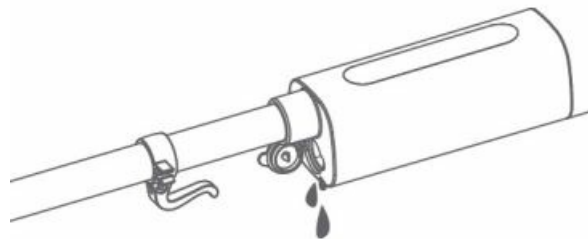
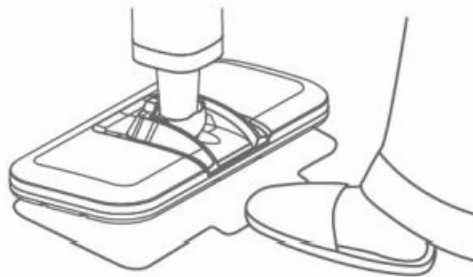
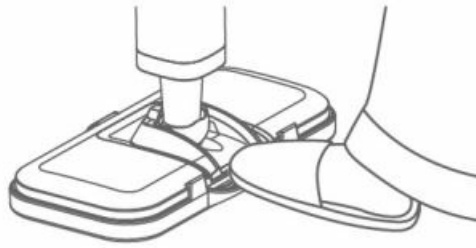
- Press the power button on the backside  to power off the unit. Unplug the cord from the outlet and place the Steam Mop into the upright position. Let it cool for 10-15 minutes.
- Carefully remove accessories from the device.
 - **Remove Carpet Glider**

Place your feet on the edge of the carpet stand and gently lift the main unit to remove the carpet glider.

- **Remove the Mop Pad**

Step on the edge of the cleaning pad and gently lift the steam mop to remove the used mop pad.

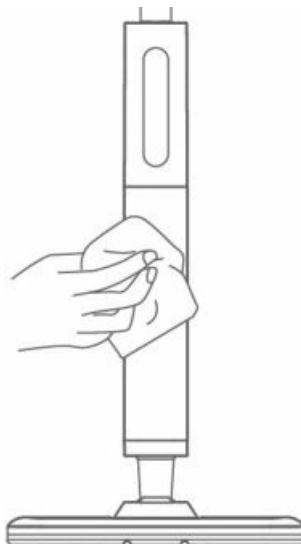
3. Empty the water tank by holding the unit beside a sink. Open the lid of the water tank and lean the unit over the sink to allow the water to drain out. Once the tank is empty, close the lid securely.



NOTE: The water tank should be emptied after each use to prevent mineral build-up and overfilling.

Cleaning

1. Make sure to regularly clean the surface of the unit body by wiping it with a soft, dry cloth to remove any dust.



WARNING

Do not immerse the steam mop in water or other liquids.

1. Wash pad in warm water, separately from other cloths. Use only liquid detergents. Do not use fabric softeners or bleach. For best results, air dry.



NOTE:

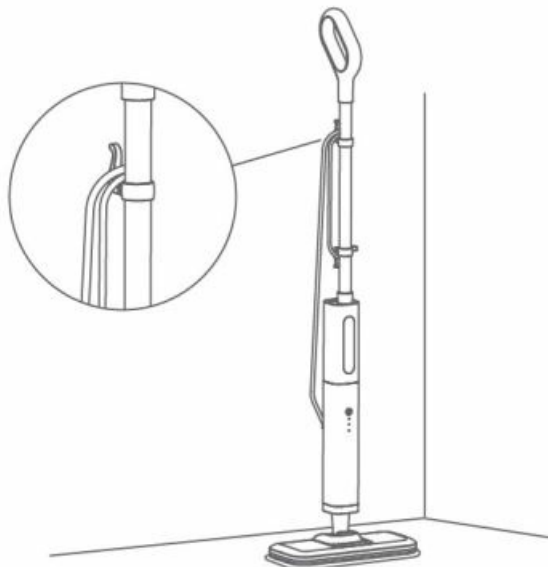
- NEVER leave the Steam Mop with a damp/wet Dirt Grip pad on any floor for an extended period of time. When replacing the mop pad, make sure the machine is powered off and no steam is being ejected.
- Be careful not to touch the steam mop outlet with your hands to avoid burns.
- The mop pad can be reused after cleaning. Keep your home clean by replacing the mop pad every 2-3 months, depending on your usage.

WARNING

Before replacing any accessories, be sure to unplug the unit and give it sufficient time to cool down. Failure to do so may result in burns or other injuries.

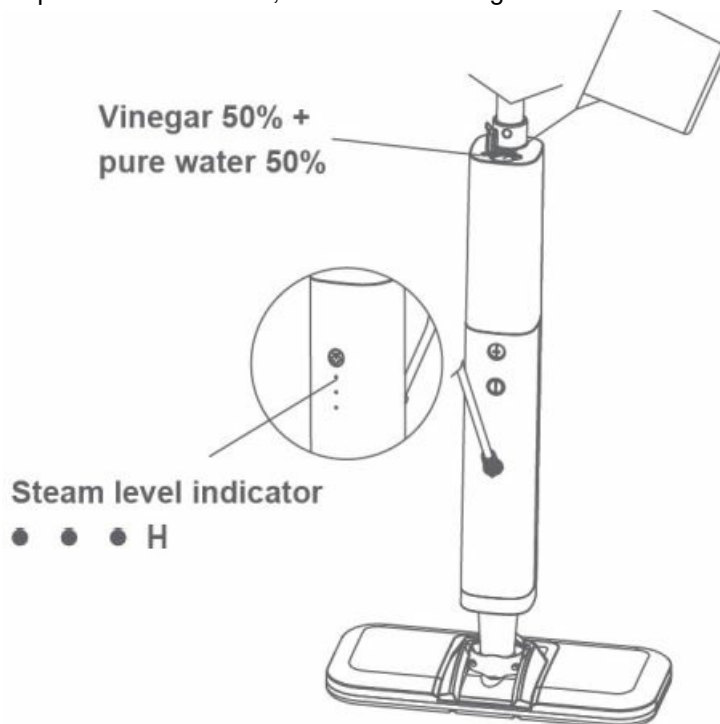
Storage

When the product is not in use, remember to unplug the power cord and wind it up on the hook provided. After the product has cooled down completely, store it in a dry and well-ventilated room.



NOTE: Water-containing mineral levels will vary depending on the place where you live in. To ensure the continuous operation of the steamer, never store it without cleaning and removing excess water from the water container or tank.

If you fill your steamer with tap water, you may experience mineral build-up due to the high mineral content in the water supply in many cities. Mineral residue inside your steamer's internal heater may cause intermittent steaming or, in severe cases no steaming at all. To avoid the problem, only use de-mineralized or distilled water in your steamer. Anti-calc operation can be done if you notice your appliance performance has decreased. Fill the tank with white vinegar 50% with purified water 50%, and clean with high level steam cleaning.



TROUBLESHOOTING

If your device is not operating properly, please check if it is related to any of the following problems or conditions. If you are still unable to detect and solve the problem, please contact the after-sales service for help.

Problems	Possible Causes	Probable Solutions
The steam mop does not heat up.	The steam mop is not plugged in.	Plug the power cord into an outlet.
	Power is not flowing to the outlet.	Check your circuit breaker or replace the fuse as needed. For additional help, contact a qualified electrician.
	The steam mop is not turned on.	If the lights below the Steam Control Button are not illuminated, check whether you have pressed the power button on the back of the unit to turn it on.

The steam mop does not create steam.	The steam mop is heating up.	If the 3 lights below the Steam Control Button begin a cycling glow, wait 15s for the unit to warm up.
	The water tank is empty.	Fill the water tank to the appropriate level.
	The steam mop is in standby mode.	If the lights below the Steam Control Button are blinking, press the Steam Control Button to select a Steam setting.
There are many water stains on the floor.	The mop pad is overwet.	We recommend you unplug the steam mop and change the microfiber cleaning pad.
Floors are cloudy, streaky or spotty after steaming.	The mop cleaning pad may be too dirty.	Disconnect the power supply and replace the mop pad. If the area to be cleaned is matted with thick oily dirt and stains, please sweep or vacuum your floors with detergent prior to cleaning with your steam mop.
The water tank is leaking.	The lid of water tank isn't closed properly.	Close the lid of tank securely.
It is really hard to push/pull the steam mop to use. The mop pad may be dirty.		Make sure the microfiber cleaning pad is attached correctly; Replace the pad if it is too dirty or wet.

WARRANTY

LIMITED ONE-YEAR WARRANTY

Thank you for your purchase!

WARRANTY:

Enjoy a warranty for the steam mop for one year.

REPLACEMENT POLICY:


Free replacements are based on manufacturing defects but not replaced for the reason of abusing, misusing, or other non-intended usages of the steam mop. Based on the specific situation of the sample back, we reserve the right for maintenance or replacement.

EXCELLENT CUSTOMER SERVICE:

If you experience any issues with this product, please contact us, Newbealer is happy to be of service all the time.

Any suggestions are also welcome.

Documents / Resources

	Newbealer NB603C Steam Mop [pdf] User Manual NB603C Steam Mop, NB603C, Steam Mop, Mop
---	--

References

- [User Manual](#)