

NEUMANN LH65 Table Stand With Horizontal



NEUMANN LH65 Table Stand With Horizontal Instruction Manual

[Home](#) » [Neumann](#) » NEUMANN LH65 Table Stand With Horizontal Instruction Manual 

Contents

- [1 NEUMANN LH65 Table Stand With Horizontal](#)
- [2 Important safety instructions](#)
- [3 Package contents](#)
- [4 ASSEMBLY](#)
- [5 Specifications](#)
- [6 Guarantee](#)
- [7 Documents / Resources](#)
 - [7.1 References](#)



» NEUMANN.BERLIN

NEUMANN LH65 Table Stand With Horizontal



Important safety instructions

- Read and follow the safety and mounting instructions, keep these instructions easily accessible, and always include them when passing the LH 65 on to third parties.
- Also, read and follow the installation instructions contained in the operating manual of the mounted studio monitor.
- When mounting, follow the local, national, and international regulations and standards.

Intended use

- The LH 65 is a table stand for decoupling a studio monitor from the installation surface and for optimum orientation. The LH 65 is only suitable for Neumann 2-way monitors and must only be used in dry and clean interiors such as studios and on desktops.
- The LH 65 must not be used for other purposes or in other environments. In case of any damage or any deviation from the safety and mounting instructions, immediately dismount the studio monitor from the LH 65.

Required Qualifications

Have the studio monitor mounted to the LH 65 by a specialist. Due to his/her technical training, know-how, and experience as well as knowledge of relevant provisions, regulations, and standards, the specialist must be able to assess assigned tasks, recognize potential hazards, and ensure appropriate safety measures.

Safety instructions for mounting

- Only mount one Neumann 2-way studio monitor to the LH 65 and proceed as described in this mounting

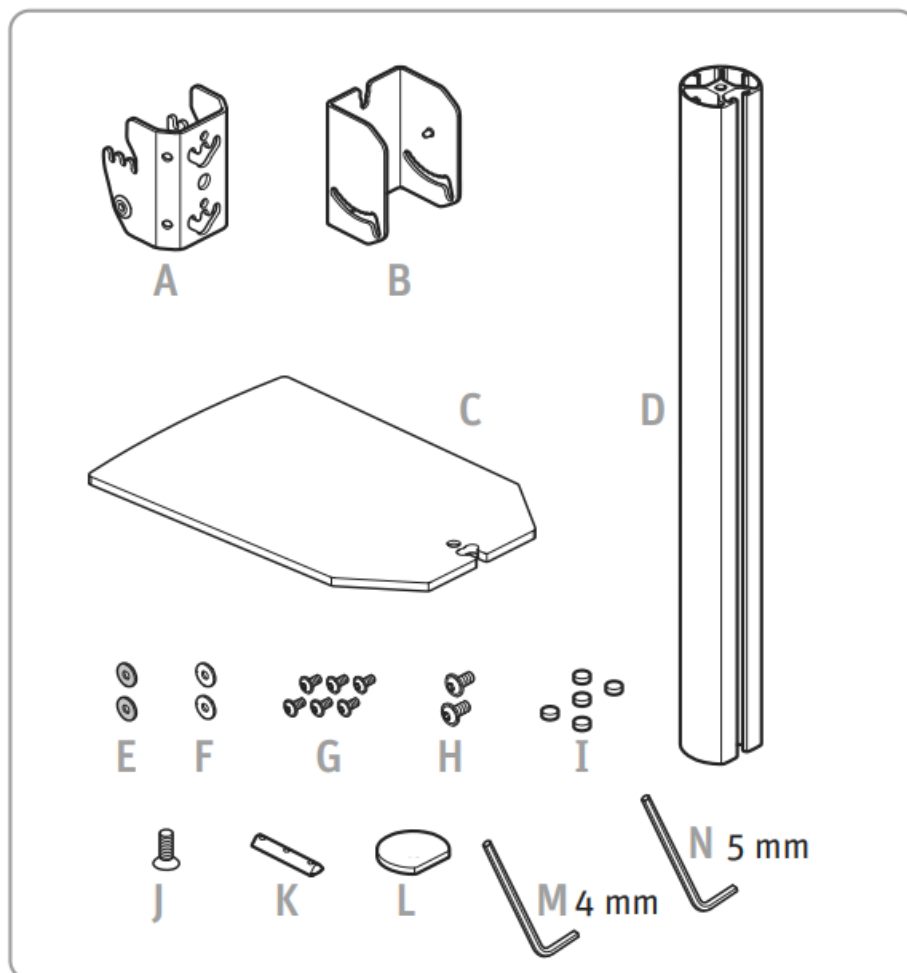
manual.

- Always use the enclosed original accessories.
- Check every 3 months if all screws are properly tightened and if the LH 65, the studio monitor, and the surface on which the LH 65 is placed are in proper condition.

Safety instructions for installation

- Do not install the LH 65 in locations where it is exposed to externally generated vibrations.
- Place the LH 65 with the mounted studio monitor on a horizontal and slip-resistant surface that can carry at least the weight of the LH 65 with the mounted monitor. Make sure that the LH 65 with the mounted monitor cannot tip over or drop down, even if the power or audio cables are pulled.
- Do not place the LH 65 on delicate surfaces, as these might get stained when they come into contact with the self-adhesive feet.

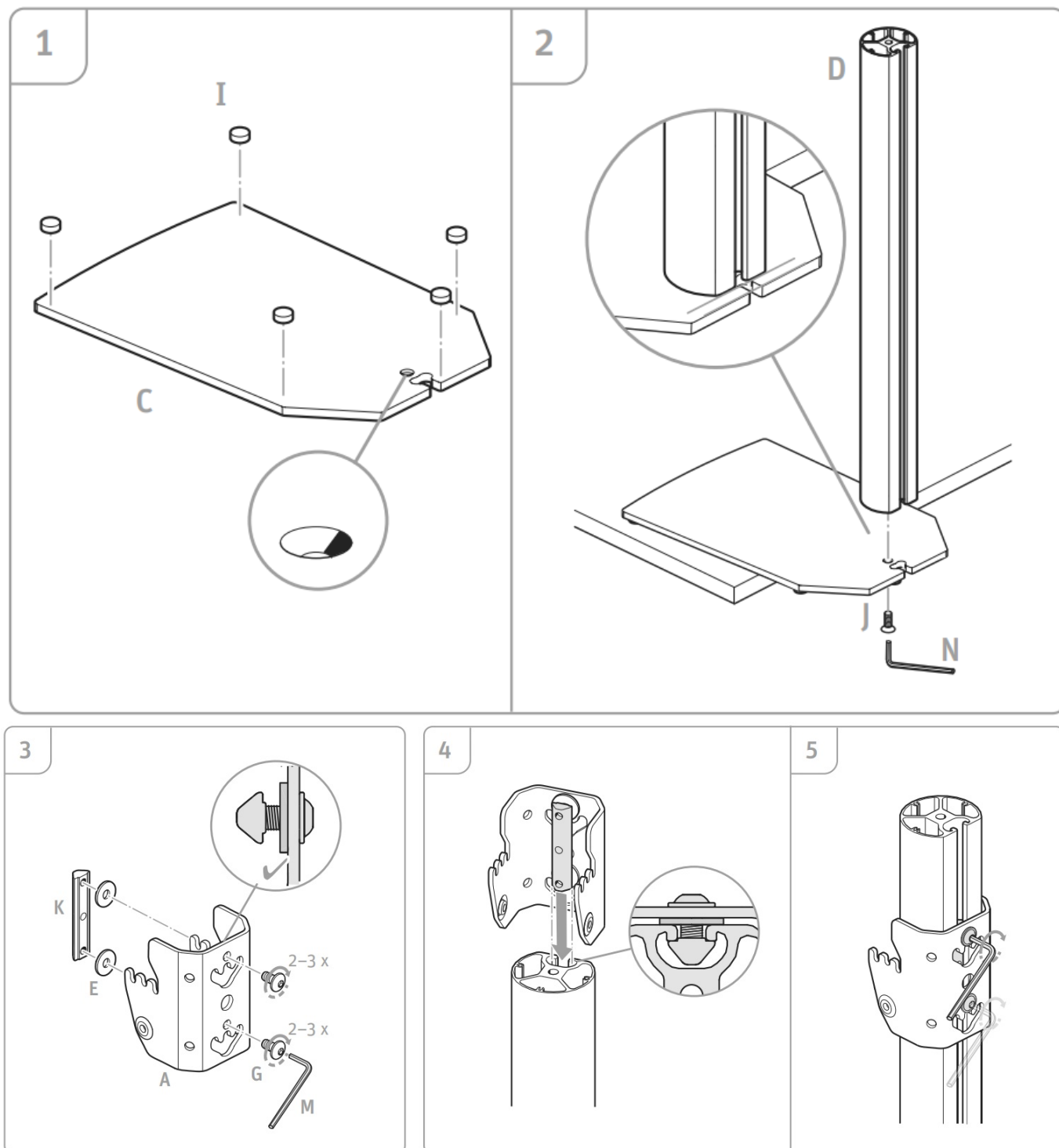
Package contents

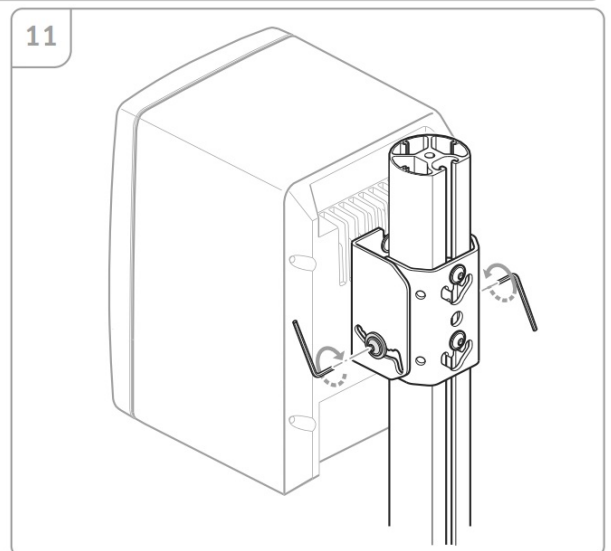
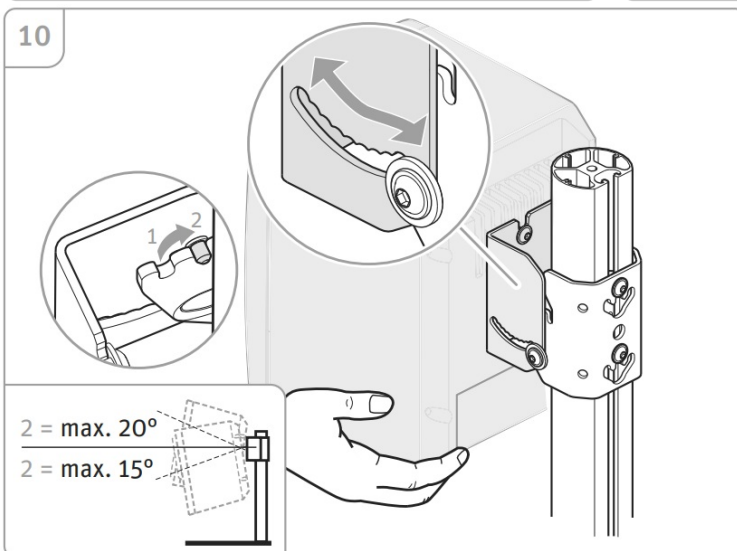
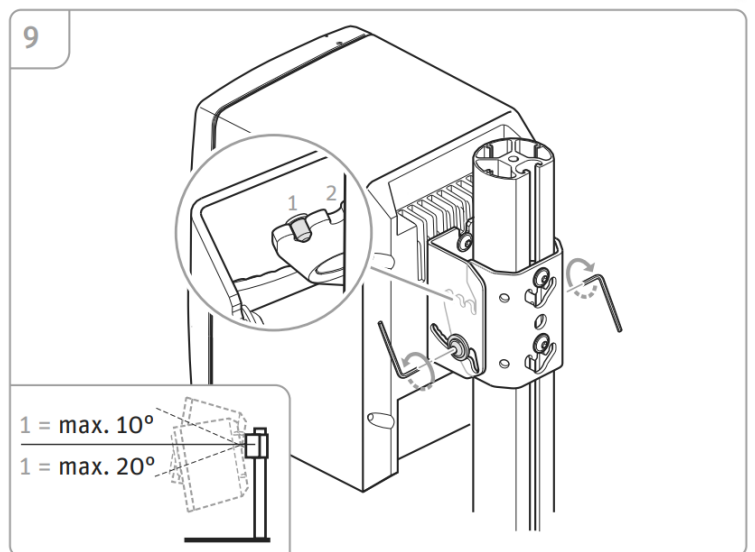
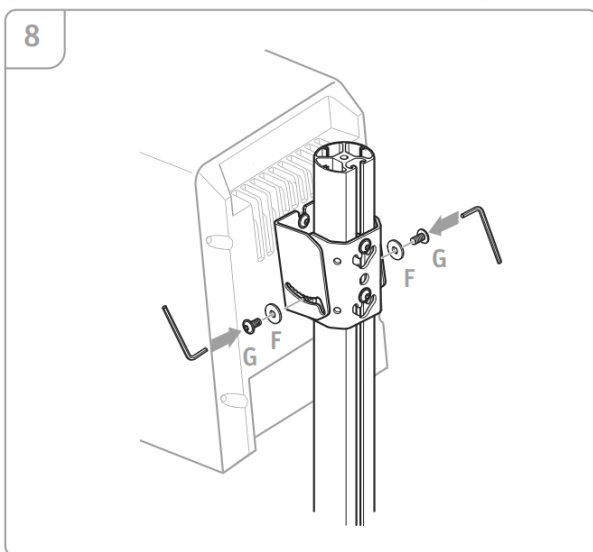
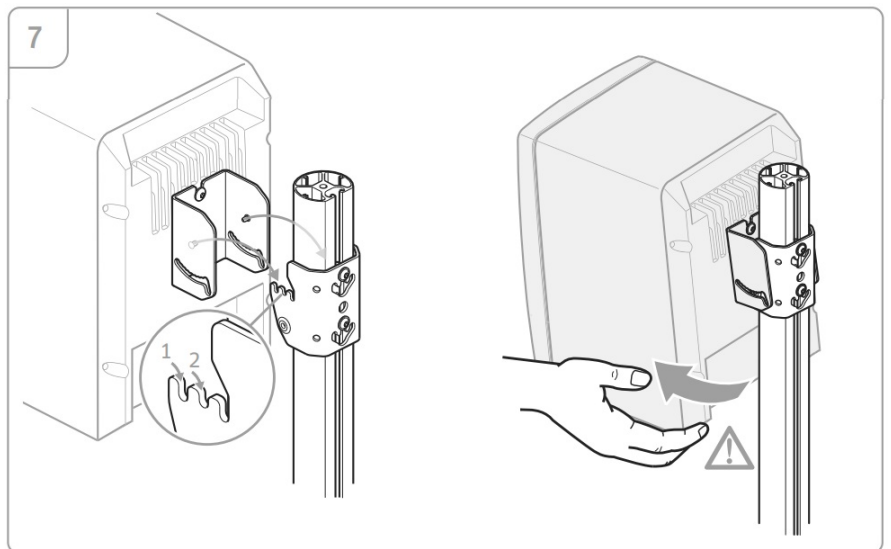
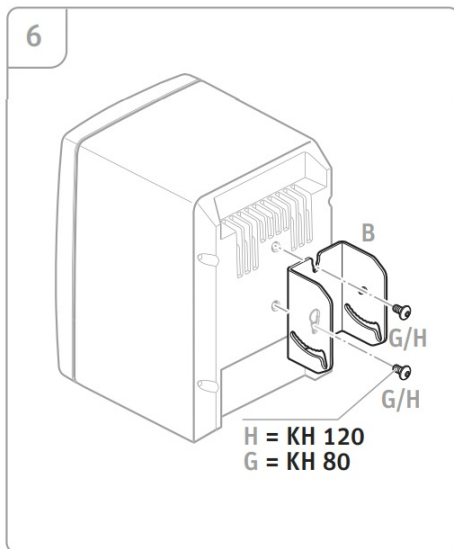


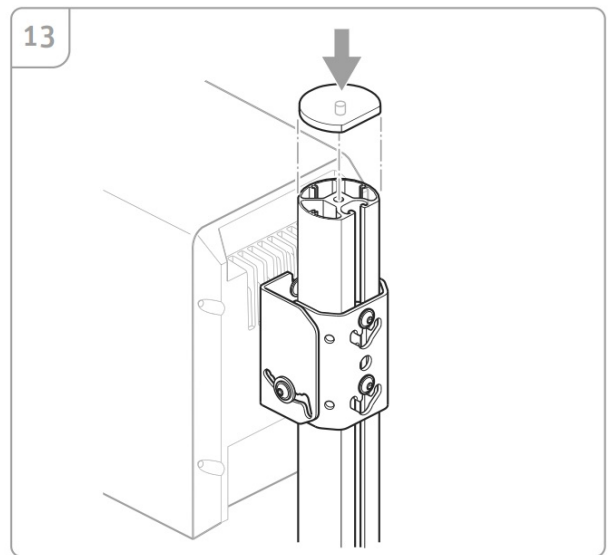
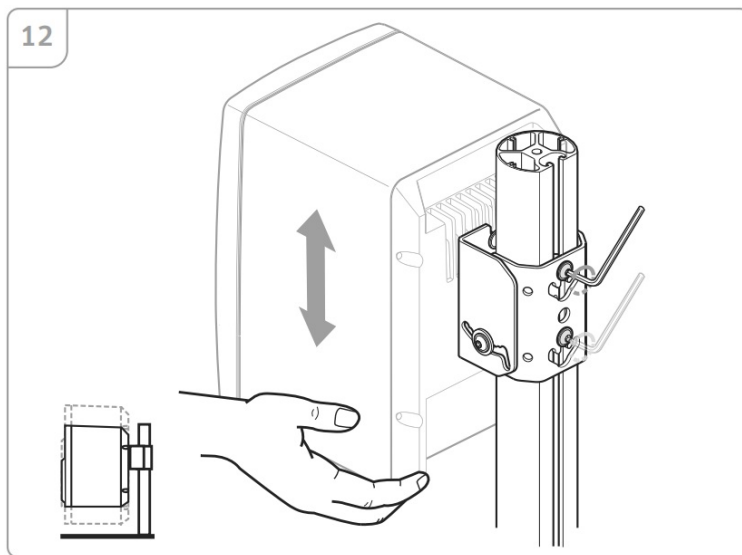
- **A:** 1 x bracket for height adjustment
- **B:** 1 x bracket for inclination adjustment
- **C:** 1 x base plate
- **D:** 1 x tube
- **E:** 2 x plastic washers
- **F:** 2 x metal washers

- **G:** 6 x M6x12 screws
- **H:** 2 x M8x12 screws
- **I:** 5 x self-adhesive feet
- **J:** 1 x M8x20 countersunk screw
- **K:** 1 x height bracket locking clamp
- **L:** 1 x cover cap
- **M:** 1 x 4 mm Allen key
- **N:** 1 x 5 mm Allen key

ASSEMBLY







Specifications

- **Weight without packaging** 3.6 kg
- **Dimensions (assembled)** 507 x 185 x 285 mm (H x W x D)
- **Max. load** 10 kg

Guarantee

For the current terms and conditions of the product guarantee please visit www.neumann.com.

georg neumann gmbh · Leipziger Str. 112 · 10117 berlin · Germany
tel +49 (0)30 / 41 77 24-0 · **fax** -50
headoffice@neumann.com
www.neumann.com

Documents / Resources



NEUMANN LH65 Table Stand With Horizontal [pdf] Instruction Manual
 LH65 Table Stand With Horizontal, LH65, Table Stand With Horizontal, Stand With Horizontal, H
 orizontal

References

- [User Manual](#)

[Manuals+.](#) [Privacy Policy](#)

This website is an independent publication and is neither affiliated with nor endorsed by any of the trademark owners. The "Bluetooth®" word mark and logos are registered trademarks owned by Bluetooth SIG, Inc. The "Wi-Fi®" word mark and logos are registered trademarks owned by the Wi-Fi Alliance. Any use of these marks on this website does not imply any affiliation with or endorsement.