



netwave NW6000 VDR Upgrade Solutions Instructions

[Home](#) » [netwave](#) » netwave NW6000 VDR Upgrade Solutions Instructions 

Contents

- [1 netwave NW6000 VDR Upgrade Solutions](#)
- [2 Product Usage Instructions](#)
- [3 Upgrade to Save Time and Money](#)
- [4 Functional benefits](#)
- [5 Documents / Resources](#)
 - [5.1 References](#)
- [6 Related Posts](#)



netwave NW6000 VDR Upgrade Solutions



Specifications

- Model: Netwave NW6000 VDR Upgrade Systems
- Compatibility: G1, G2, G3 series VDRs
- Mounting: Horizontal 19 inch rack mount
- Features: Touchscreen BCU, Core module, Automatic

- Configuration, VHF Interface, Mics, Screen Frame Grabber Player V2
- Power: Power over Ethernet (PoE)

Product Usage Instructions

Ease of replacing the Fixed Capsule

1. Use the welding plate with pre-molded holes provided in the NW6000 VDR to replace any existing capsule (L3; Fixed Capsule) on the G1/G2/G3 system.
2. This reduces installation time and eliminates the need for welding on board.

Utilizing existing wiring infrastructure:

1. Utilize the existing VDR cabling with new retrofit components to reduce engineering time and vessel disruption.
2. Attach new components to existing bolt holes using retrofit plates to avoid drilling or welding new fittings.

Functional benefits

1. The Netwave NW6000 Upgrade Systems remove and upgrade outdated components including the core module, capsule, and bridge control unit.
2. The new VDR reuses existing interface boxes to reduce installation cost and deploys upgrade plates for easy installation in the same spaces.

Additional user-friendly features

1. The NW6000 VDR offers new playback features on the touchscreen BCU.
2. Utilize Power over Ethernet (PoE) for powering components, reducing cabling requirements and allowing for future expansion of the system.

Frequently Asked Questions (FAQ)

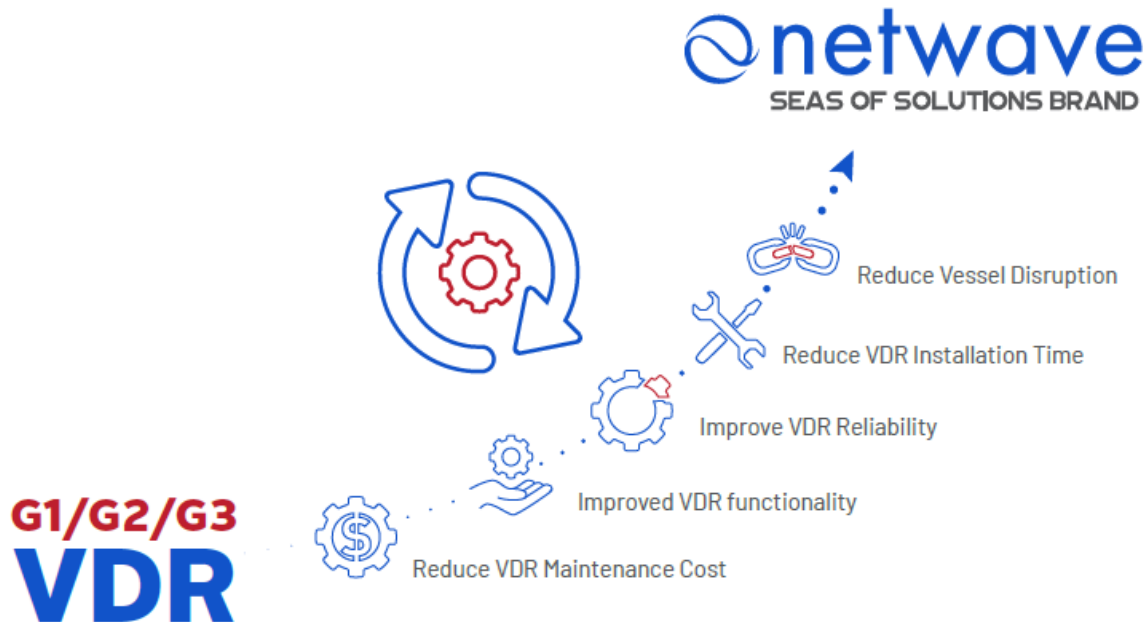
Q: What are the benefits of upgrading to Netwave NW6000 VDR?

A: The benefits include reduced vessel disruption, improved installation time, enhanced reliability, increased functionality, and decreased maintenance costs.

Netwave NW6000 VDR Upgrade Solutions



Netwave's VDR Upgrade Systems offer significant economic, innovation and installation benefits for ship owners, managers and service teams upgrading or replacing older Voyage Data Recorder systems. As a SOLAS mandated technology your VDRs dependability is integral to the effective management of your fleet. Reliability, usability and minimised downtime are the foundation blocks for a trouble free VDR. By upgrading your aging system to a Netwave NW6000 you can ensure ease of installation with minimal downtime, while providing crew friendly features and access to a global service network. Seas Of Solutions range of Netwave Upgrade Systems accelerate the upgrade of a wide range of VDR models. Vessel owners reduce the immediate installation cost and time, diminish the risk of supporting aging hardware obsolescence and enhance both the future reliability and capabilities of their VDR solution.



Upgrade to Save Time and Money

- Upgrade specialists help reduce VDR upgrade costs with pre-installation survey forms to avoid unplanned disruption, while advanced upgrade kits reduce installation time by an average of one day. There is also the option to re-utilize existing sensor modules and cabling (where feasible) to further accelerate installation.
- Improve your VDR reliability and reduce servicing downtime by removing dated equipment reliant on sometimes scarce components, which could extend service times and hold ships at port.
- Gain access to one of the largest global service networks, with approximately 1300 certified engineers.
- By upgrading older VDRs near their end service, vessels can reduce the lifetime cost of ownership by lowering maintenance and annual APT costs and gain the peace of mind of a ten-year service guarantee and seven years parts support after final manufacture date*.
- Fully compliant with July 2014 IMO installation standard MSC 333.(90), Netwave NW6000 VDRs offer technological confidence in a solution which has a global install base of more than 6,000 vessels.



Benefits of Netwave NW6000 VDR Upgrade Systems

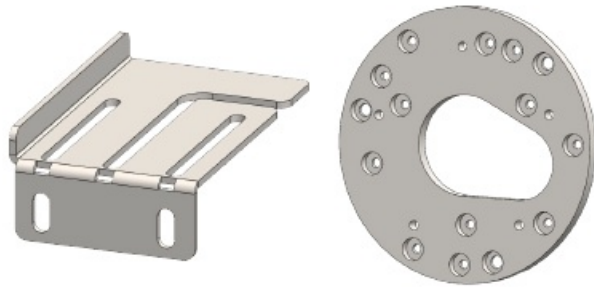
As the natural upgrade route, the Netwave NW6000 Upgrade Systems provide economic and functional benefits for the conversion of existing G1 19" rack and the G2 & G3 series VDRs.

Ease of replacing the Fixed Capsule:	NW6000 VDR standard components includes a welding plate with pre-molded holes to replace any capsule (L3; Fixed Capsule) installed on the G1/G2/G3 to reduce installation time and avoid welding on board.
Using existing wiring infrastructure:	Reduce engineering time and vessel disruption, such as ceiling access; by using existing VDR cabling with new retrofit components.
Utilize existing core module rack space and fixing:	The Upgrade Systems help avoid the need to re-allocate additional space, by incorporating the NW6000's new components into the existing VDR rack space. Attachments can be fixed to existing bolt holes using our range of retrofit plates, removing the time and hazard implications of drilling or welding new fittings. This is particularly relevant for vessels with flammable cargo.

Functional benefits

Netwave NW6000 Upgrade Systems remove and upgrade out dated components including the core module, capsule and bridge control unit. The new VDR reuses the existing interface boxes to further reduce installation cost and deploys a range of upgrade plates to ensure the new system can be installed in the same spaces.

The NW6000 VDR offers additional user- Horizontal 19 inch rack mount Capsule Fitting plate friendly benefits, including new playback features on the touchscreen BCU and the use of Power over Ethernet (PoE) to power components. This both reduces cabling requirements and allows easier future expansion of the VDR system.



Horizontal 19 inch rack mount

Capsule Fitting plate

VDR Element	Features
Bridge Control unit (BCU)	Touchscreen
Core module inside 19" rack	New VDR is installed in the existing space
Automatic Configuration	Automatic configuration of sensors reduces engineering time, with the ability to copy over existing configurations for some models.
VHF Interface	Dual function VHF interface and microphone power source
Mics	Plug and play replacement option utilising existing cabling
Screen Frame Grabber	Increased number of channels including connecting VGA and LWE
Player V2	Easy install allows both playback and offers touchscreen interface for ease of use


By using Seas Of Solutions highly skilled service network and deploying vessel-specific survey reports prior to the Netwave NW6000 VDR Upgrade Systems being deployed, Netwave VDRs reduce vessel disruption and installation costs. The NW6000 series upgrade improves VDR reliability, reduces maintenance and where viable utilizes existing sensor modules and cabling to further reduce installation time and overall project cost.



www.seasofsolutions.com sales@seasofsolutions.com

Specifications subject to change or improvement without notice NW 02.24 Iss3

Documents / Resources

	<p>netwave NW6000 VDR Upgrade Solutions [pdf] Instructions G1, G2, G3, NW6000 VDR Upgrade Solutions, NW6000, VDR Upgrade Solutions, Upgrade Solutions</p>
---	---

References

- [Seas Of Solutions – Supporting Safer Sailing, Anytime – Everywhere](#)
- [User Manual](#)

Manuals+, Privacy Policy

This website is an independent publication and is neither affiliated with nor endorsed by any of the trademark owners. The "Bluetooth®" word mark and logos are registered trademarks owned by Bluetooth SIG, Inc. The "Wi-Fi®" word mark and logos are registered trademarks owned by the Wi-Fi Alliance. Any use of these marks on this website does not imply any affiliation with or endorsement.