



NetumScan SD-800NC Portable Document Camera User Guide

[Home](#) » [NetumScan](#) » NetumScan SD-800NC Portable Document Camera User Guide 

NetumScan SD-800NC Document Camera



Quick Guide

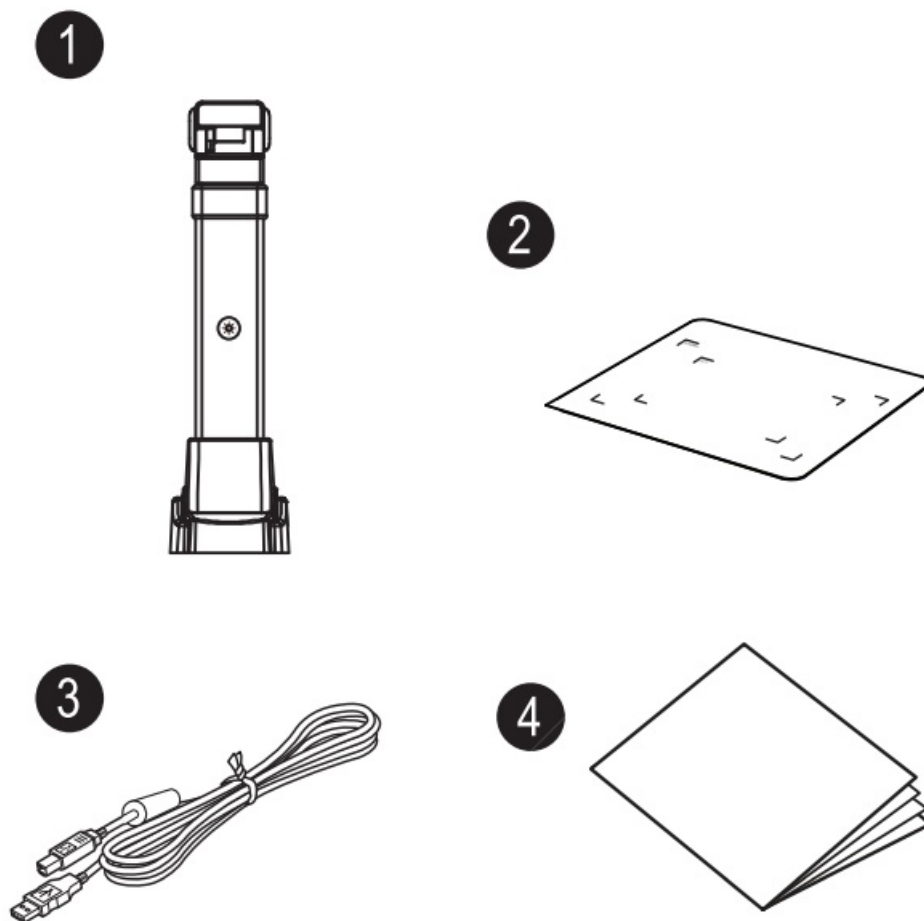
<https://www.netum.net/>

Contents

- [1 Overview](#)
- [2 Hardware Installation](#)
- [3 Getting Started](#)
- [4 Software Functions](#)
- [5 Parts Descriptions](#)
- [6 Documents / Resources](#)
 - [6.1 References](#)
- [7 Related Posts](#)

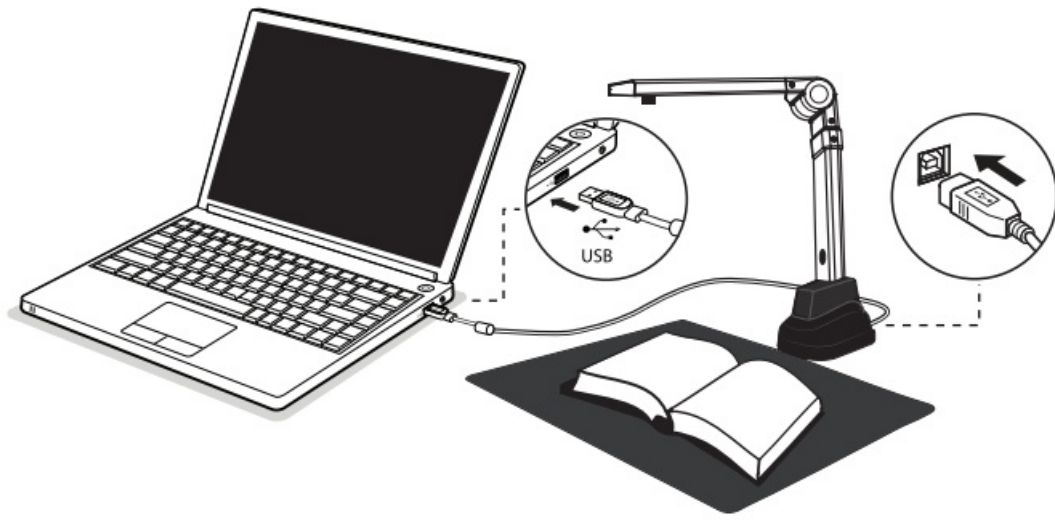
Overview

Before use, make sure the following items are included in the packag. If anything is missing, contact the retailer where you purchased the NetumScan SD-800NC product.



Hardware Installation

1. Plug the supplied USB cable into the back of the NetumScan SD-800NC and connect another end to an available USB port on your computer.



2. NetumScan SD-800NC will connect automatically to your computer. (NetumScan SD-800NC is a driverless device used with Windows 10, 8 . 7, Vistaor XP operating systems. Your computer will recognize the device under the Cameras in the Windows Device Manager menu.)

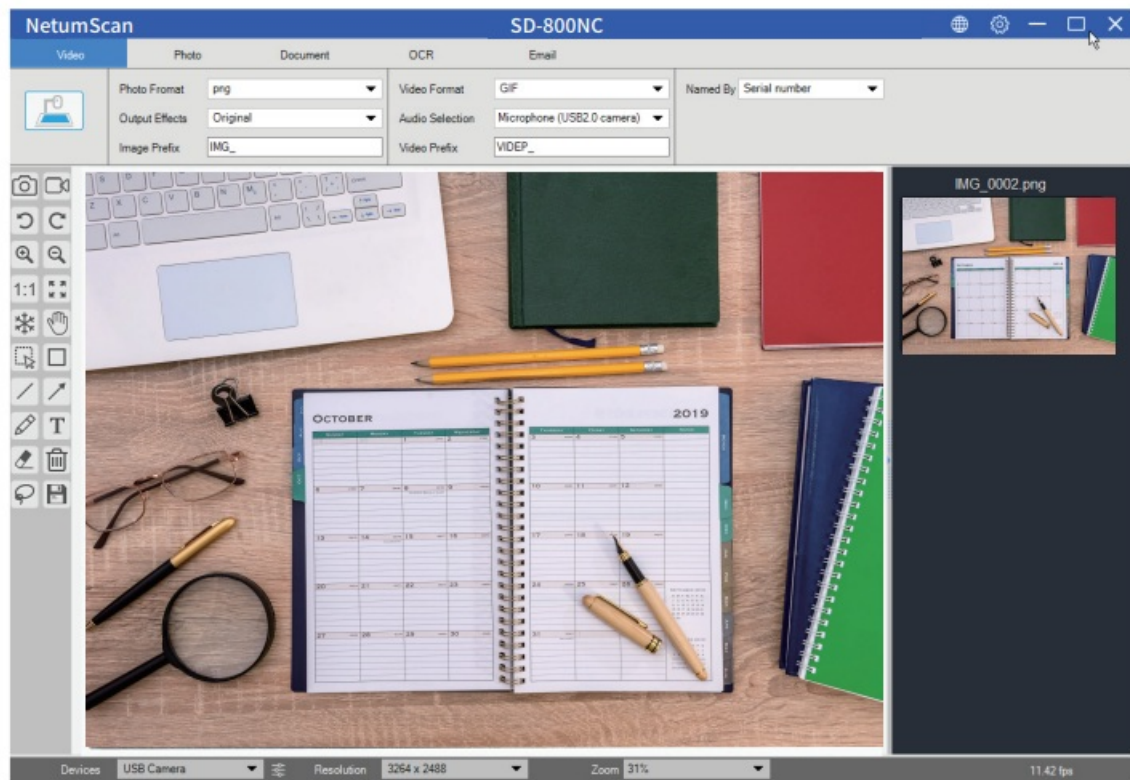
Getting Started

1. Scan QR code or use below link to download the NetumScan Pro Software



<https://www.netum.net/pages/netumscan-document-camera-setup-guide>

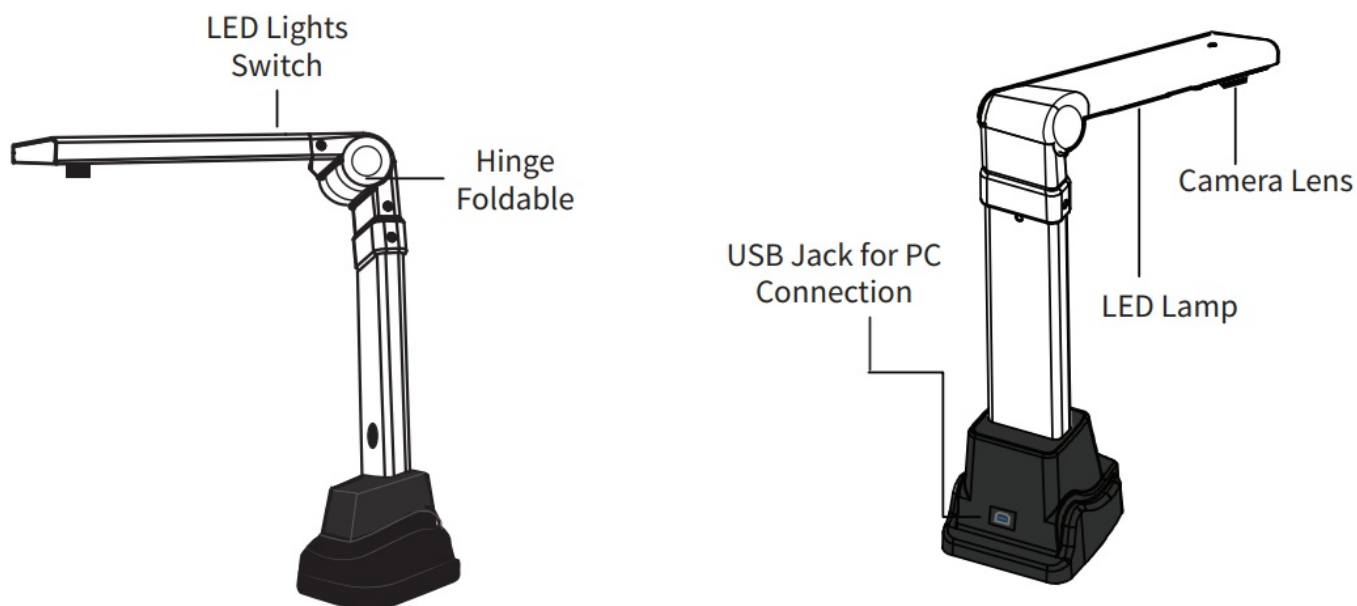
2. To start the program, please double-click on the NetumScan Pro Software icon on the desktop or click the Start Menu Windows icon then [All apps] to select NetumScan Pro Software.
3. Place a document on the positioning pad and align it to the position mark.
4. Select one of the functions to scan your material from the main menu. You can make changes to your preferences in the settings menu and then click [Scan] button to scan a document.



Software Functions

Function Modes	Descriptions
Video	The Video mode is used for record video clips and save them to different video for mats with Motion JPEG compression you can even use the video mode as a Visualizer
Photo	The Photocopy mode is used to scan documents and print them to a printer. (NOTE: Need to work with a separate printer)
Document	The Document mode is used for scan documents, name cards, ID cards, or any paper sheets to JPEG or PDF files.
OCRE	The OCR mode can convert the scanned files into editable Word/ Text/Excel formats
Mail	The E-mail mode is used to scan and save results Into PDF or JPEG files, and then send these files through E-mail

Parts Descriptions



Contact Information

Tel.: +0086 20-3222-8813


Email: support@netum.net

Addr.: Room 301, 6th Floor and full 3rd Floor, Building 1, No. 51
Xiangshan Avenue, Ningxi Street, Zengcheng District, Guangzhou,
Guangdong, China/ 511356

Website: <https://www.netum.net/>

Made in China

Documents / Resources

 <p>NetumScan SD-800NC Document Camera</p> <p>Quick Guide https://www.netum.net/</p>	<p>NetumScan SD-800NC Portable Document Camera [pdf] User Guide SD-800NC, Portable Document Camera, SD-800NC Portable Document Camera</p>
----------------------------------------------------------------------------------------------------------------------------------------------------------------------------------------------------------------------	---------------------------------------------------------------------------------------------------------------------------------------------------------------

References

- [NETUM | Barcode Scanner | Thermal Printer | PDA Terminal Device – Guangzhou Netum Electronic Technology Co., Ltd.](#)