



# NETUM DS2800 Wi-Fi Barcode Scanner Instruction Manual

[Home](#) » [NETUM](#) » NETUM DS2800 Wi-Fi Barcode Scanner Instruction Manual 

## NETUM DS2800 Wi-Fi Barcode Scanner Instruction Manual



## Contents

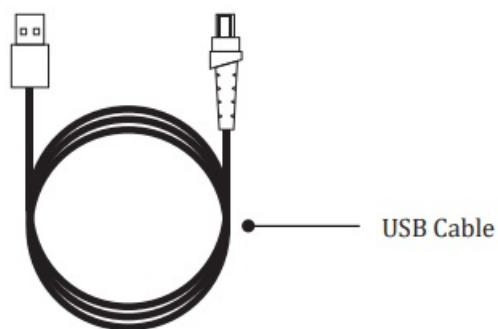
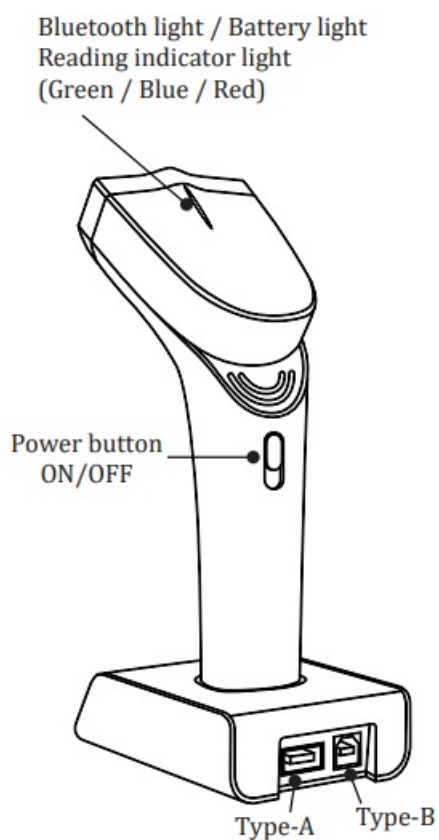
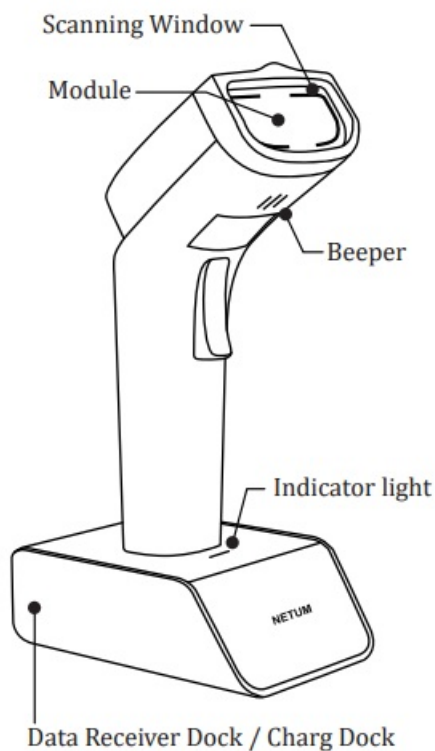
- 1 Package Included
- 2 Product Information
- 3 Charge the scanner
- 4 Get Battery Volume
- 5 Factory Defaults
- 6 Connection Way
- 7 Keyboard Language
- 8 FAQ
- 9 Documents /  
Resources
  - 9.1 References
- 10 Related Posts

## Package Included

- 1 \*Scanner;
- 1 \* Power Charging Dock;
- 1 \* USB Cable;
- 1 \* Quick Setup Guide

**Note:** This is a general manual. If you need more configurations please download it from our official website:  
<https://www.netum.net/>

## Product Information



### Firmware Version:

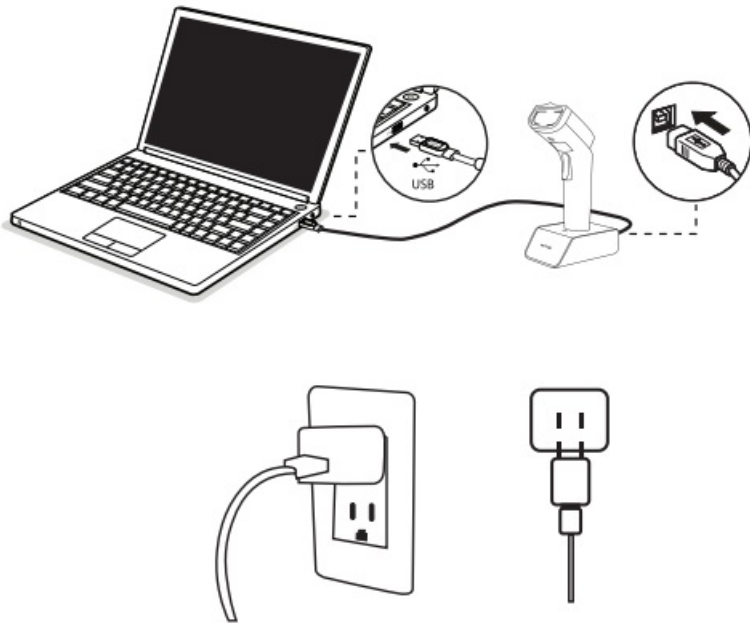
Firmware version will be displayed by scanning "\$SW#VER".



\$SW#VER  
Get Version

### Charge the scanner

Connect charge cradle with your host through USB cable (provided by Netum) or take a DC plug and charge it on an electrical wall outlet. Then plug scanner on the charge cradle to charge power for it.



**Important Notes:** DC Plug V: 5V; A>500mA

### Warning Tone

- Red Light – Charging
- Green Light – Fully charged

### Get Battery Volume

Scan below command barcode to get battery rough volume.



%BAT\_VOL#

#### 1. Voltage < 3.5V – Low battery Volume

There will have 5 beeps after each scan. Scanner can not be able to read any barcodes.

#### 2. 3.7V< Voltage < 3.5V- Low battery Volume

There will have 2 beeps after each scan.

#### 3. Voltage >4.2V , Full Volume

### Factory Defaults

Scanning the following barcode will restore the scanner to the factory.  
Scanner will power off after you scanning Factory Restore.



%#IFSNO\$B  
Factory Restore

## Barcode Programming:

Netum barcode scanners are factory programmed for the most common terminal and communication settings. If you need to change these settings, programming is accomplished by scanning the barcodes in this guide. An asterisk (\*) next to an option indicates the default setting.

### Important Notes :

Some command barcodes only work in a particular connection mode.

Please pay attention to below symbols before you scanning the command barcodes.



Command barcodes only apply to scanner transmit characters via Bluetooth.



Command barcodes only apply to scanner transmit characters via Wifi.

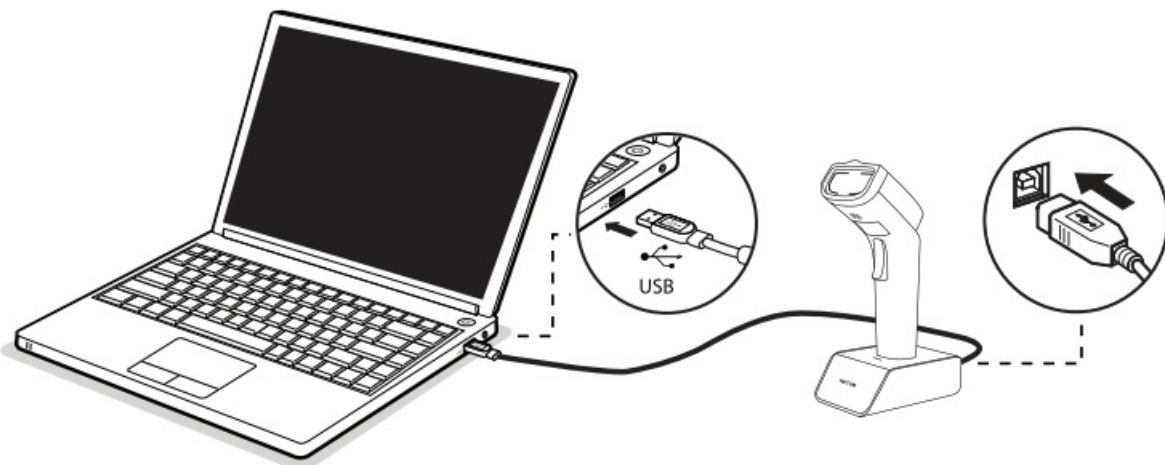
## Connection Way

Scanner transmits characters to your device via bluetooth or Wifi. You can choose either way to get started.



How to transmit characters via wifi ?

1. Connect scanner to your device like below picture.



2. Power on scanner and then scan "Wifi Mode".



\*Wifi Mode

3. ) Download “NetumWifi service.exe” from



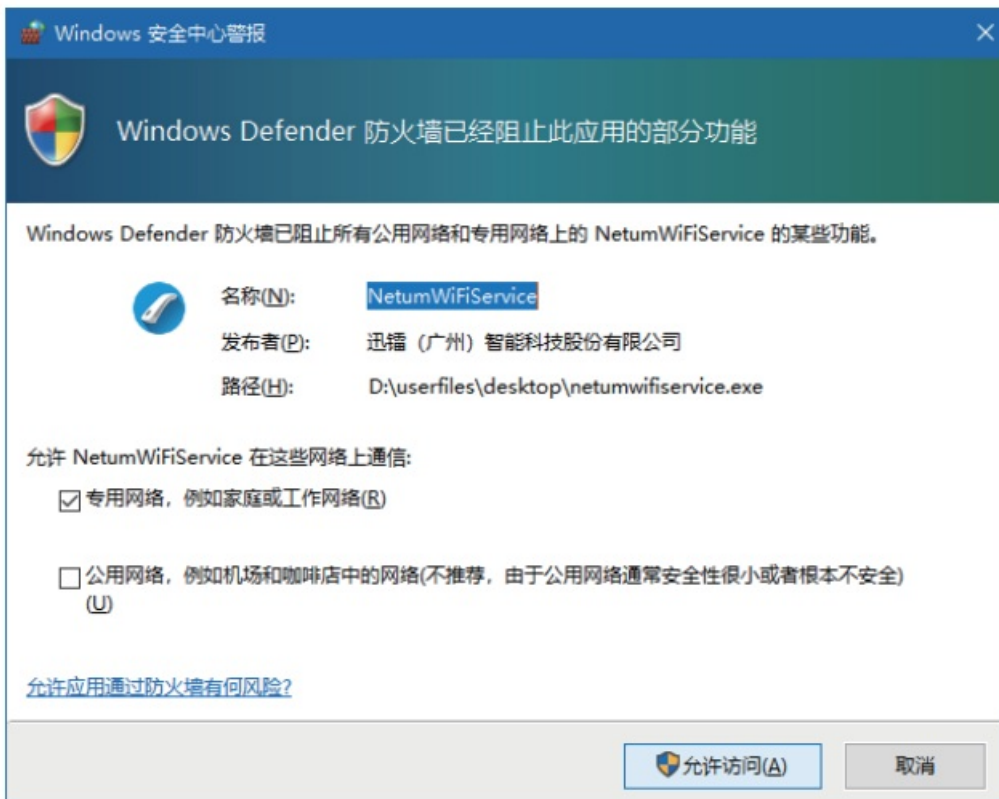
<https://cdn.shopify.com/s/files/1/2144/8019/files/NetumWiFiService.zip?v=165761621>

4. Open “Netum Wifi service.exe” to fill in all blanks. (Only do it in the first time.)



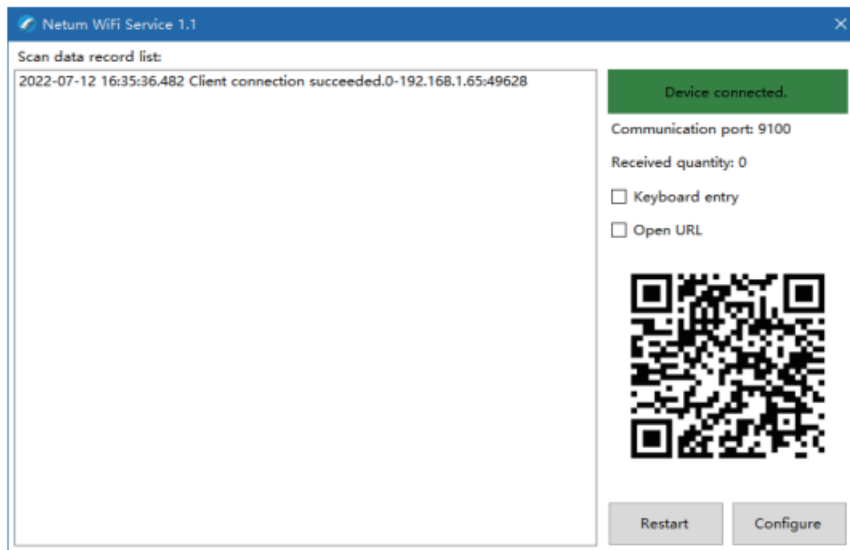
The "Parameter configuration" window is a dialog box with a blue title bar and a close button. It contains two sections for configuration. The first section, "1. Please configure the WiFi information that the device needs to connect", includes fields for "WiFi Name" (set to "NETUM"), "WiFi Password" (set to "xl20210825"), and "Encryption method" (set to "WPA2"). The second section, "2. please configure the service information of scanning gun startup", includes fields for "Service address" (set to "192.168.0.188") and "Service port" (set to "9100"). A large QR code is displayed on the right side of the window. At the bottom, there are "OK" and "Cancel" buttons.

5. A QR code will be generated after you filling all required information.  
6. Scan the QR code and close “Parameter Configuration” window.  
7. If a firewall interception prompt pop up , please click Allow to move on.



The "Windows Defender 安全中心警报" (Windows Defender Security Center Alert) window shows a warning that the firewall has blocked some functions of the application "NetumWiFiService". The window includes the Windows Defender logo and the text "Windows Defender 防火墙已经阻止此应用的部分功能". Below this, it states "Windows Defender 防火墙已阻止所有公用网络和专用网络上的 NetumWiFiService 的某些功能。". The application details are listed: "名称(N): NetumWiFiService", "发布者(P): 迅播 (广州) 智能科技股份有限公司", and "路径(H): D:\userfiles\desktop\netumwifiservice.exe". Under the heading "允许 NetumWiFiService 在这些网络上通信:", there are two checkboxes: "专用网络, 例如家庭或工作网络(R)" (checked) and "公用网络, 例如机场和咖啡店中的网络(不推荐, 由于公用网络通常安全性很小或者根本不安全) (U)". A link "允许应用通过防火墙有何风险?" is provided. At the bottom, there are "允许访问(A)" and "取消" buttons.

8. Once scanner connected with wifi and the software successfully , below notice will be displayed in the software.



#### Restart:

Restart the software

#### Configure:

Open configuration interface

9. Click “Keyboard entry” and” Open URL”.
10. Locate cursor on the place where you want scanner to output characters.
11. Setup keyboard language(please refer to the part of” keyboard language” in the manual) then you can start to scan.
12. If you want to connect multi scanners to one computer, simply by scanning the qr code in the software will make a new scanner connect to the same computer, then repeat step 11 to configure keyboard language to the new scanner.

**Note:** NetumWiFiService demo software is a software based on Windows system, which creates data receiving service through TCP/IP protocol, and contains two additional functions.

1. Keyboard input: Input received content to cursor position through keyboard.
2. Open URL: call system default browser to open received URL.



#### How to transmit characters via bluetooth ?

#### Get Started:

1. Power on scanner.
2. Scan “Bluetooth HID Mode”.



**Bluetooth HID Mode**

3. Find “NETUM WF Scanner” from your bluetooth list and tap pair.



### Important Notes:

- Make sure the device is in range with Bluetooth turned on.
- Pressing the scan button will initiate the attempts to connect
  1. If a connection is made, the blue light will stop blinking and turn solid.
  2. If a connection is not made after several attempts, the scanner will emit a long beep (and the blue light will turn off).
- Bluetooth working channel is not set by default. If you want to connect via bluetooth, you will have to scan “Bluetooth HID Mode” before pairing.
- If you want command barcode for SPP or BLE, please email us for support.

### Keyboard Language

For example If you use French Keyboard, scan command barcode of “French keyboard ”. If you use a US keyboard you can ignore this step.



\* America EN keyboard



French keyboard



Germany keyboard



Italy keyboard



Portugal keyboard



Spain keyboard



## Idle Time

Scanner will turn to sleep after idle/inactive for 3mins



Power Off



10Mins



30Mins



Disable sleep Mode

## Function Key Mapping

When Function Key Mapping is enabled, function characters are sent over the keypad.



\$KEY#M0

\*Disable Function Key Mapping



\$KEY#M1

Enable Function Key Mapping

## LED Activity/Prompt Tone /Indication under different Connections

| LED Light Status              | Beep Pattern   | Indication                          | Working Mode             |
|-------------------------------|----------------|-------------------------------------|--------------------------|
| LED Flash Green (Slow)        | No Beep        | WIFI unconnected                    | Wifi Mode                |
| LED in Solid Green(No flash ) | one long beep  | WIFI Connected                      | Wifi Mode                |
| LED Flash Blue (Slow)         | No Beep        | Bluetooth Unconnected               | Bluetooth Mode           |
| LED in Solid Blue(No flash)   | one long beep  | Bluetooth connected                 | Bluetooth Mode           |
| Blue LED On and then Off      | one short beep | Successful Scan                     | Wifi Mode/Bluetooth Mode |
| Blue LED Flash 3 times        | 3 beeps        | Data transmit failed/Memory is full | Wifi Mode/Bluetooth Mode |
| Blue LED Flash 5 times        | 5 beeps        | Running out of battery              | Wifi Mode/Bluetooth Mode |

## FAQ

### 1. Some barcodes cannot be read, why ?

- Dirty or unclear barcodes might not be read.
- The possible reason is that setting for some barcode types not commonly used is off by default. You need to activate a specific barcode type to get it to work. Please contact us for help.

### 2. How to change terminator to TAB ?

Please refer to the section of "Terminator configuration" from the manual downloaded from our official website.

### 3. Are there any barcodes for applying or removing prefix & suffix ?

Yes, you may go to our official website "[www.netum.net](http://www.netum.net)" to download the manual ,refer to the section of "prefix and suffix" or turn to customer service for help.

### 4. How to solve the messy code problem encountered while using other foreign languages?

The default language is English. Please refer to "Keyboard Language" to change the language.

### 5. Why scanner can not read Italy Pharmacy code?

Download the manual from our official website according to the scanner model number, refer to the section of Code32 then scan "Enable Code32" to enable the scanner to read Italy pharmacy code.

### 6. Why scanner can not read add-on 2 or 5 codes?

Download the manual from our official website according to the scanner model number, refer to the section of ADD-On code and scan the appropriate command barcode to enable the scanner read it.

## 7. Why scanner can not read datamatrix GS1 in a correct format ?

Scan “Enable Function Key Mapping” from this manual will enable scanner to output group separator.

### Note:

Please do not hesitate to contact us if you need any other configurations.

### Contact Information

Please do not hesitate to contact us if you need any other configurations.

**Email:** [service@netum.net](mailto:service@netum.net)

**Whatsapp:** +86 188 2626 1132

**Tel.:** +0086 20-3222-8813

**Add:** 301,6 3/F, Building 1, No. 51 ,Xiangshan Avenue, Ningxi ST  
Zengcheng, GZ China

Name: APEX CE SPECIALISTS LIMITED

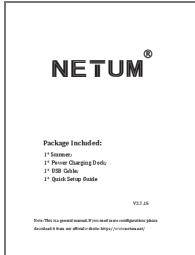
**Add:** UNIT 3D NORTH POINT HOUSE, NORTH POINT BUSINESS PARK, NEW MALLOWS  
ROAD, CORK, T23 AT2P, IRELAND

**Contact:** Wells

**Tel:** +353212066339

**E-Mail:** [Info@apex-ce.com](mailto:Info@apex-ce.com)

## Documents / Resources

|  |   |
|--|---|
|  <p><b>NETUM®</b></p> <p>Package Included:</p> <ul style="list-style-type: none"><li>1* Scanner</li><li>1* Phone Charging Cable</li><li>1* USB Cable</li><li>1* Quick Setup Guide</li></ul> <p>923-01</p> <p><small>Please Note: This is a printed manual. It is not available in PDF format. Please download it from our official website: <a href="http://www.netum.com">http://www.netum.com</a></small></p> | <p><b><a href="#">NETUM DS2800 Wi-Fi Barcode Scanner</a></b> [pdf] Instruction Manual<br/>DS2800 Wi-Fi Barcode Scanner, DS2800, Wi-Fi Barcode Scanner</p> |
|--|---|

## References

- [ce.com](http://www.netum.com)
- [NETUM | Barcode Scanner | Thermal Printer | PDA Terminal Device – Guangzhou Netum Electronic Technology Co., Ltd.](#)
- [NETUM | Barcode Scanner | Thermal Printer | PDA Terminal Device – Guangzhou Netum Electronic Technology Co., Ltd.](#)