



netis M6R AX1800 Whole Home Mesh Wi-Fi 6 System Installation Guide

[Home](#) » [netis](#) » netis M6R AX1800 Whole Home Mesh Wi-Fi 6 System Installation Guide 

Contents

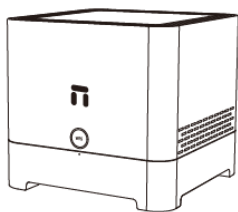
- [1 netis M6R AX1800 Whole Home Mesh Wi-Fi 6 System](#)
- [2 Package Contents](#)
- [3 LED Explanation](#)
- [4 Hardware Connection](#)
- [5 Configure the Mesh WiFi System](#)
- [6 FAQ](#)
- [7 Warning](#)
- [8 Documents / Resources](#)
- [9 Related Posts](#)



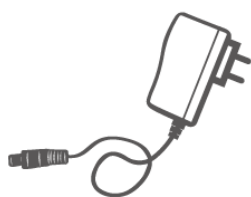
netis M6R AX1800 Whole Home Mesh Wi-Fi 6 System



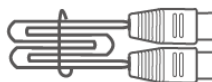
Package Contents



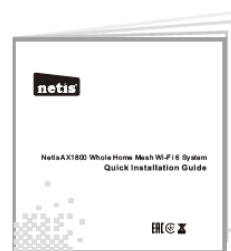
M6 (2-pack or 3-pack)



Power Adapter



Ethernet Cable



QIG

This QIG is for netis AX1800 whole home Mesh WiFi system.

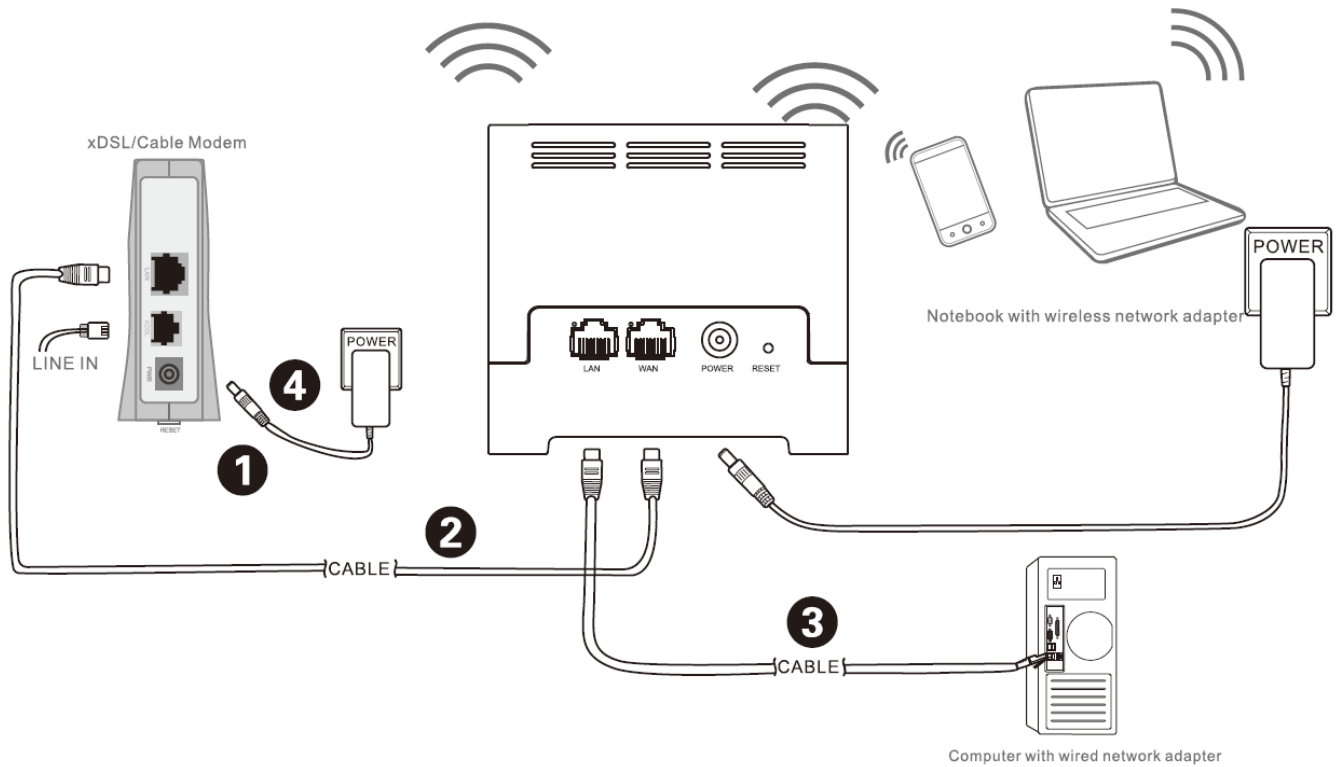
LED Explanation

Name	LED Status	Indication
Primary node	Solid green	Power on
	Solid green	Networking succeed
	Solid red	Networking fail
	Blink green fastly five times	Reset
	Blink	WPS
Secondary node	Solid green	Power on
	Solid green	Networking with primary node succeed, excellent connection quality
	Solid yellow	Networking with primary node succeed, fair connection quality
	Solid red	Networking with primary node fail
	Blink green fastly five times	Reset
	Blink	WPS

Nate:

1. Blink fast: 0.5s/time, Blink slow: 2s/time
2. WPS be overtime after 120s

Hardware Connection

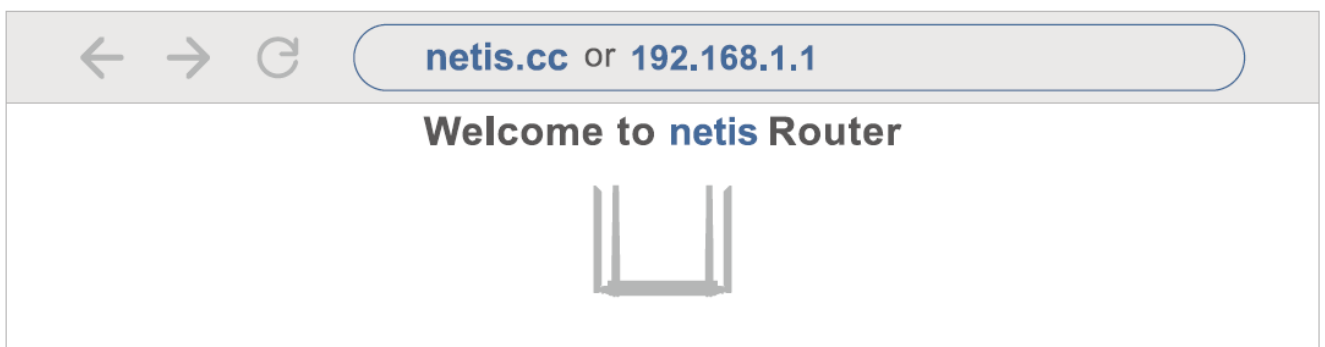


1. Power off your modem.
2. Connect the WAN port on netis router to modem's LAN port with an Ethernet cable.
3. Connect your computer to one of the LAN ports on router with an Ethernet cable.
4. Power on your modem and router

Configure the Mesh WiFi System

Choose one device from the kit to connect to the Internet as the primary node In the network.

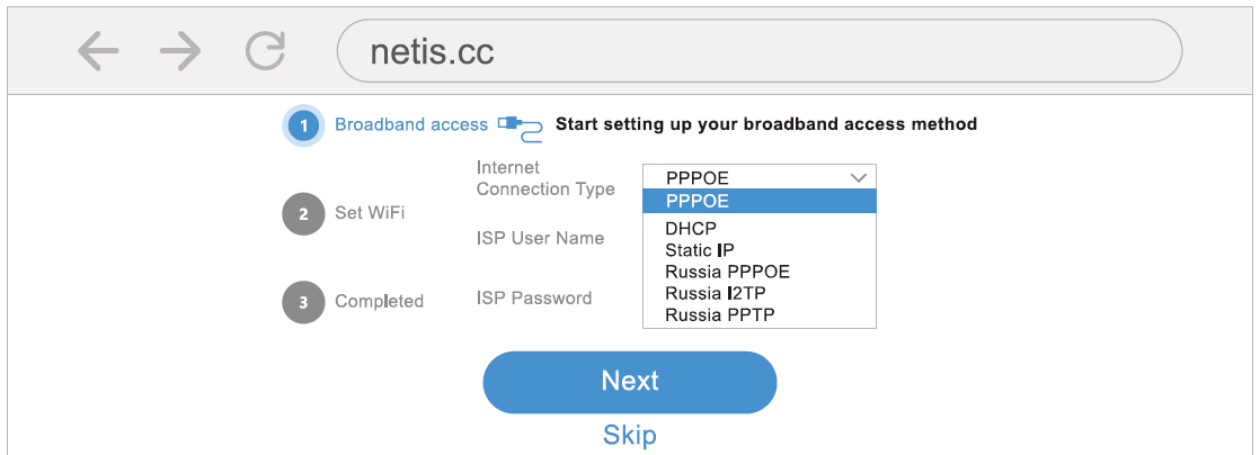
1. Connect your PC to the LAN port on router with an Ethernet cable, or connect your WiFi device to the router's default SSID listed in the bottom label of device.
Default SSID: 2.4G SSID: Netis-XXXXXX/5G SSID: Netis-XXXXXX-5G ("XXXXXX": Last 6 digits of LAN MAC)
2. Open your browser and type netis.cc or 192.168.1.1 in the address to visit router's web management page.
You can select the language as you need is the top corner, default is English.



3. Enter setup wizard to start configure.
4. Router will detect your Internet access mode automatically.
 1. If Dynamic IP(DHCP) is selected, the router will automatically receive the IP parameters from your

ISP(Internet Service Provider).

2. If PPPoE is selected, please enter the User Name and Password provided by your ISP.
3. If Internet access mode isn't detected automatically, please choose it manually.
4. If Static IP is required, please enter the IP Address/Subnet Mask/Default Gateway/DNS Servers provided by your ISP.



The screenshot shows a web browser interface for configuring a Netis router. The address bar displays 'netis.cc'. The main content area has a progress bar with three steps: 1. Broadband access (active), 2. Set WiFi, and 3. Completed. Under step 1, there is a section titled 'Start setting up your broadband access method'. It includes a dropdown menu for 'Internet Connection Type' with options: PPPOE (selected), DHCP, Static IP, Russia PPPOE, Russia L2TP, and Russia PPTP. Below this are input fields for 'ISP User Name' and 'ISP Password'. At the bottom of the configuration section are two buttons: 'Next' (blue) and 'Skip' (blue text).

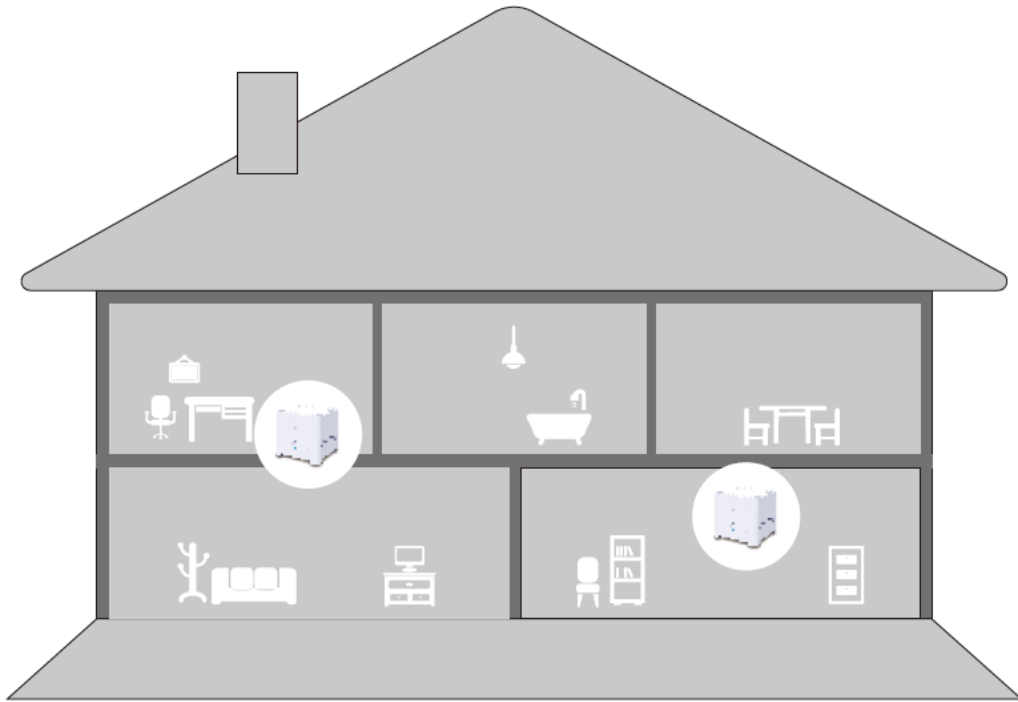
5. Configure your Wi-Fi name and password as you required and click "Save".
6. Wi-Fi setting succeeded, you can surf the Internet now.

Extend Iha Mash network with rest devices as secondary node.

1. Place the rest devices in the kit within 3 meters from the primary node to power them on. Wait for about 2 minutes. When the LED indicators of these devices light solid green, the networking is successful and these devices become secondary nodes in the network
2. Please refer to the following relocation tips to locate the secondary nodes to a proper position:
 - Ensure that the distance between any two nodes is less than 10 meters.
 - Keep your nodes away from electronics with strong interference, such as microwave oven, induction cooker, and refrigerator.
 - Place the nodes in a high position with few obstacles.
3. Power on the secondary nodes again until these LED indicators blink green slowly.
4. Observe the LED Indicator of the secondary node until it becomes solid green or solid yellow which means qualified connection. Or if it becomes solid red, please relocate it closer to primary node for optimal connection quality.

Configuration finished and enjoy the Whole-Home Mesh WiFi.

Tips: All configuration can be done in primary node, and all nodes share the same SSID and password.



FAQ

Q1. How to do I restore the router to factory default settings?

- Power on the router and press the RESET button on the back panel of the router with a pin until the router restart, so the configuration will be restored to factory settings
- Log In to the router'
- web management page, then go to "System"> "Restore", click Restore, and wait for the reset process to complete.

Q2. The phone cannot search for Wi-Fi signal

- Please try to log in to the router management page, "home page">"Wireless Network", to check whether Wi-Fi is enabled.
- Please check whether the hidden SSID function of the wireless settings is enabled, please turn off the phone and search for the Wi-Fi signal again.

Warning

FCC PART 15.105 INFORMATION:

This equipment has been tested and found to comply with the limits for a Class B digital device, pursuant to part 15 of the FCC Rules. These limits are designed to provide reasonable protection against harmful interference in a residential installation. This equipment generates, uses and can radiate radio frequency energy and, if not installed and used in accordance with the instructions, may cause harmful interference to radio communications. However, there is no guarantee that interference will not occur in a particular installation. If this equipment does cause harmful interference to radio or television reception, which can be determined by turning the equipment off and on, the user is encouraged to try to correct the interference by one or more of the following measures:

- Reorient or relocate the receiving antenna.
- Increase the separation between the equipment and receiver.

- Connect the equipment into an outlet on a circuit different from that to which the receiver is connected.
- Consult the dealer or an experienced radio/TV technician for help.

PART 1519 COMPLIANCE INFORMATION:

This device complies with part 15 of the FCC Rules. Operation is subject to the following two conditions:

1. This device may not cause harmful interference,
2. this device must accept any interference received, including interference that may cause undesired operation.

15.21 / KDB784748 D01 v08 (P4)

Caution!

Any changes or modifications not expressly approved by the party responsible for compliance could void the user-

- authority to operate this equipment.

Operations in 5150-5250 MHz band is for indoor use only.

FCC Radiation Exposure Statement

This equipment complies with fee radiation exposure limits set forth for an uncontrolled environment.

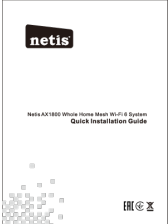
This equipment should be installed and operated with a minimum distance 20cm between the radiator and your body.

Technical Support: support@natis-systams.com

NETIS SYSTEMS CO., LTD.

www.netis-systems.com

Documents / Resources

	<p>netis M6R AX1800 Whole Home Mesh Wi-Fi 6 System [pdf] Installation Guide M6R, T58M6R, M6R AX1800 Whole Home Mesh Wi-Fi 6 System, AX1800 Whole Home Mesh Wi-Fi 6 System</p>
---	---