



NETIO PowerBOX 4KE Remote Controlled Power Sockets Installation Guide

[Home](#) » [NETIO](#) » NETIO PowerBOX 4KE Remote Controlled Power Sockets Installation Guide 

Contents

- [1 NETIO PowerBOX 4KE Remote Controlled Power Sockets](#)
- [2 Product Information](#)
- [3 Safety Notices](#)
- [4 Minimum System Requirements](#)
- [5 Package Contents](#)
- [6 Status / Control Indication](#)
- [7 Product Usage Instructions](#)
- [8 NETIO Discover](#)
- [9 NETIO Mobile2 Application](#)
- [10 Safety Notices](#)
- [11 LED and button function](#)
- [12 DECLARATION OF CONFORMITY](#)
- [13 Installation utility](#)
- [14 Documents / Resources](#)
 - [14.1 References](#)
- [15 Related Posts](#)

NETIO

NETIO PowerBOX 4KE Remote Controlled Power Sockets



Product Information

The NETIO PowerBOX 4Kx is an electrical device that allows you to control and monitors up to four electrical appliances. It comes in three models: PowerBOX 4KE, PowerBOX 4KF, and PowerBOX 4KG.

Safety Notices

1. The manufacturer is not liable for any damage caused by incorrect use of the device or by operating it in an unsuitable environment.
2. The device is not rated for outdoor use.
3. Do not expose the device to strong vibrations.
4. Unauthorized modifications may damage the device or cause a fire.
5. Protect the device from liquids and excessive temperatures.
6. Make sure the device does not fall.
7. Only electrical appliances approved for use with the electrical network may be connected to the device.
8. Do not connect multiple devices in a series.
9. The cable plug must be easily accessible.
10. The device is completely switched off only when unplugged.
11. If the device malfunctions, disconnect it from the electrical outlet and contact your vendor.
12. Do not cover the device.
13. Do not use the device if it appears to be mechanically damaged.
14. Make sure that the input and output cables are rated for the respective current.

Minimum System Requirements

A device with an Internet browser (Firefox, Opera, Mozilla, Chrome, etc.) that has JavaScript and Cookies support enabled.

Package Contents

- NETIO PowerBOX 4Kx device
- Quick Installation Guide (QIG)

Status / Control Indication

The device features a multifunction SETUP button and an M2M activity LED (red). The M2M LED flashes when

the device starts, 3x flash when the internal system restarts, or when some M2M communication is in progress. Pressing the SETUP button 3x rapidly switches all outputs and restores factory defaults.

Product Usage Instructions

Before the First Use

1. Connect your NETIO device to a LAN with a network cable (RJ45).
2. Connect the NETIO device to a mains electrical outlet with the power cable.
3. Wait about 1 minute until the device starts and receives an IP address from the DHCP server.

NETIO Discover

1. Find the NETIO Discover (MS Windows) utility at our website and install it.
2. NETIO Discover finds all NETIO devices on the network and displays them. Click on the IP address to open the web interface.
3. The displayed MAC address can be checked with the label on the device.

NETIO Mobile2 Application

You can use the NETIO Mobile2 application for Android to discover the local network and find NETIO devices there. Make sure your mobile device is connected to the same network as the NETIO device.

1. Start the NETIO Mobile2 app.
2. Click on + in the right bottom corner.
3. Click on FIND DEVICES. The list of all discovered NETIO devices will appear.

Quick Installation Guide (QIG)

Thank you for purchasing a product of NETIO product a.s. Before using your product for the first time, please read this short guide to avoid problems with incorrect installation or use. For more information, please see the User's Manual available at <http://netio-products.com>.

Please read carefully the following notice

The NETIO PowerBOX 4Kx is an electrical device. Mishandling may damage the device, void your warranty, or result in injury or death.

Safety Notices

1. The manufacturer is not liable for any damage caused by incorrect use of the device or by operating it in an unsuitable environment.
2. The device is not rated for outdoor use.
3. Do not expose the device to strong vibrations.
4. Unauthorized modifications may damage the device or cause a fire.
5. Protect the device from liquids and excessive temperatures.
6. Make sure the device does not fall.
7. Only electrical appliances approved for use with the electrical network may be connected to the device.
8. Do not connect multiple devices in a series.
9. The cable plug must be easily accessible.

10. The device is completely switched off only when unplugged.
11. If the device malfunctions, disconnect it from the electrical outlet and contact your vendor.
12. Do not cover the device.
13. Do not use the device if it appears to be mechanically damaged.
14. Make sure that the input and output cables are rated for the respective current.

Minimum system requirements

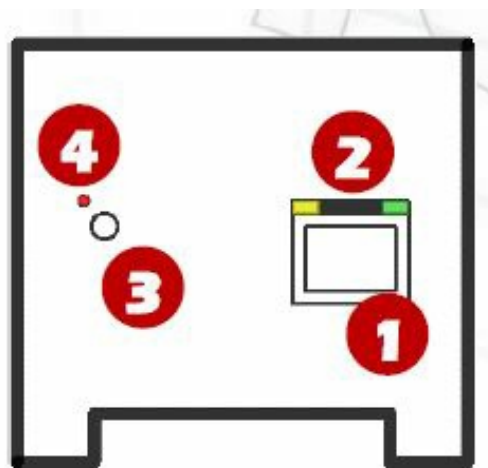
A device with an Internet browser (Firefox, Opera, Mozilla, Chrome etc.) that has JavaScript and Cookies support enabled.

Package contents

- NETIO PowerBOX 4Kx device
- Quick Installation Guide (QIG)

Status control indication

1. 1x RJ45 LAN connector
2. RJ45 LEDs – device states (yellow and green)
3. Multifunction “SETUP” button
4. M2M activity LED (red)



LED and button function

OUTPUT LEDS

RJ45 – green	Network Link (lit) + Activity (flashes)
RJ45 – yellow	1x flash when the device starts 3x flash when the internal system restarts
M2M (red)	Blink when some M2M communication is in progress

SETUP BUTTON

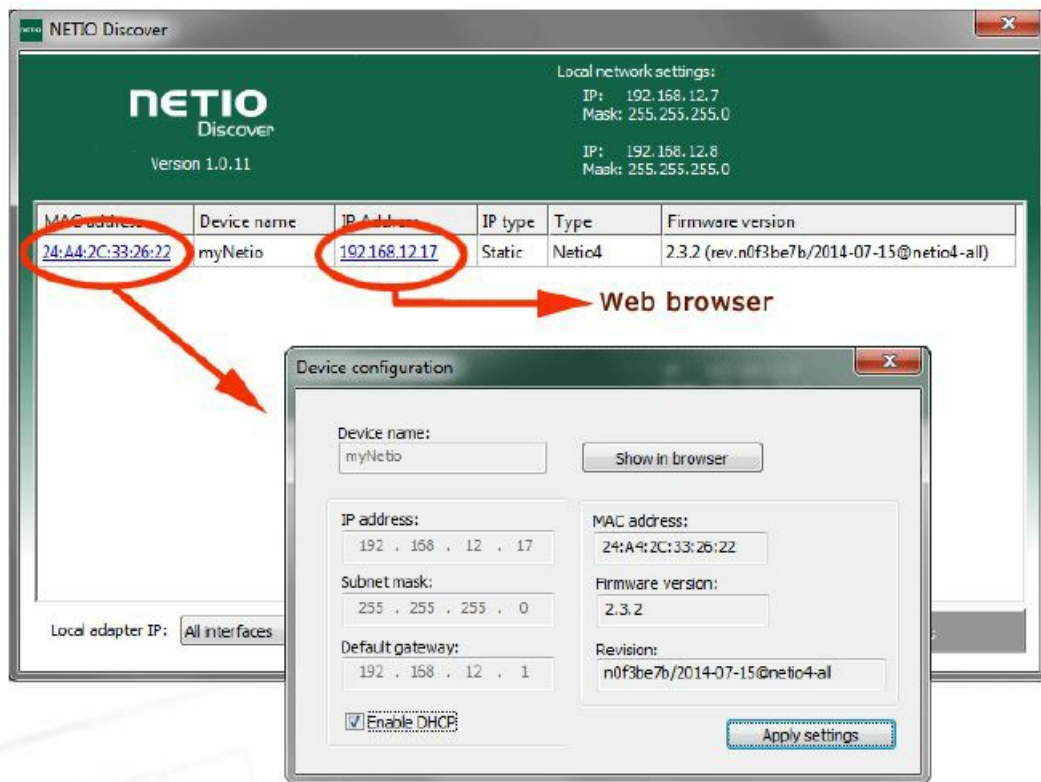
Switching all outputs	<p>Output test:</p> <p>Press the SETUP button 3x rapidly.</p> <ul style="list-style-type: none"> – If any of the output is On (1) -> Off (0). – If all outputs are Off (0), All outputs -> On (1).
Restoring factory defaults	<p>When powering on the device, hold the “SETUP” button pressed for about 10 seconds, until the yellow LED on the</p> <p>RJ45 jack flashes 3 times.</p>

Before the first use

1. Connect your NETIO device to a LAN with a network cable (RJ45).
2. Connect the NETIO device to a mains electrical outlet with the power cable.
3. Wait about 1 minute until the device starts and receives an IP address from the DHCP server.

NETIO Discover

1. Find the NETIO Discover (MS Windows) utility on our website and install it.
2. NETIO Discover finds all NETIO devices on the network and displays them. Click on the IP address to open the web interface.
3. The displayed MAC address can be checked with the label on the device.



Note: A DHCP server is required for the first installation. Fixed IP address, mask, and GW can be defined via the device web later. See the video how to find NETIO devices on the local network:

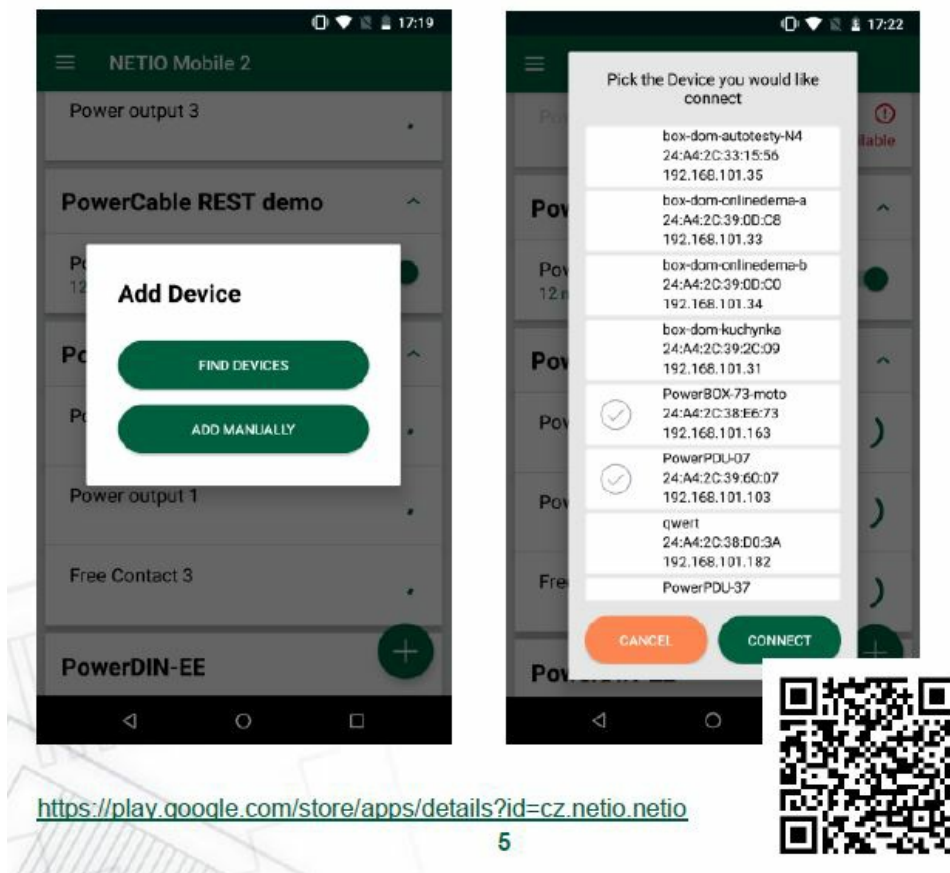
https://www.youtube.com/watch?v=Nv_rF0GTG3c



NETIO Mobile2 – Android application

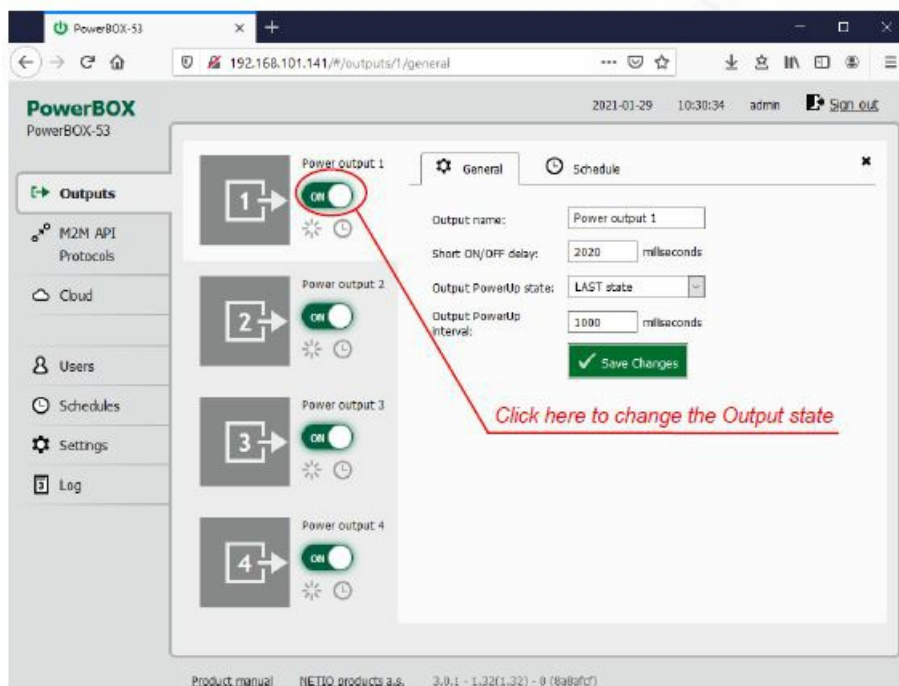
You can use the NETIO Mobile2 application for Android to discover the local network and find NETIO devices there. Make sure your mobile device is connected to the same network as the NETIO device..

1. Start the NETIO Mobile2 app.
2. Click on “+” in the right bottom corner.
3. Click on “FIND DEVICES”. The list of all discovered NETIO devices will appear (displaying name, MAC, and IP Address).
4. You can select the device and click “CONNECT” to add this device to the mobile app and control it then.



WEB interface

The default username/password combination is admin/admin.



Power	<p>100-240 V; 50/60 Hz; 16 A – PowerBOX 4KE</p> <p>100-240 V; 50/60 Hz; 16 A – PowerBOX 4KF</p> <p>100-240 V; 50/60 Hz; 13 A – PowerBOX 4KG</p>
Switched outputs	<p>16 A in total / 16 A each output – PowerBOX 4KE 16 A in total / 16 A each output – PowerBOX 4KF 13 A in total / 13 A each output – PowerBOX 4KG</p>
Maximum line breaker capacity	<p>C16A – PowerBOX 4KE C16A – PowerBOX 4KF C13A – PowerBOX 4KG</p>
Fuse	<p>Integrated, non-resettable</p>
Internal consumption	<p>Max 2 W</p>
Output relay	<p>Micro-disconnection (μ) (resistive load), SPST 1E5 switching cycles, max. 1.5 kV pulse voltage Switch heat and fire resistance class 1</p>
Interfaces	<p>1x Ethernet RJ-45 10/100 Mbit/s</p> <p>Attention! Device connected over LAN must be connected in network with same earth potential (PE).</p>

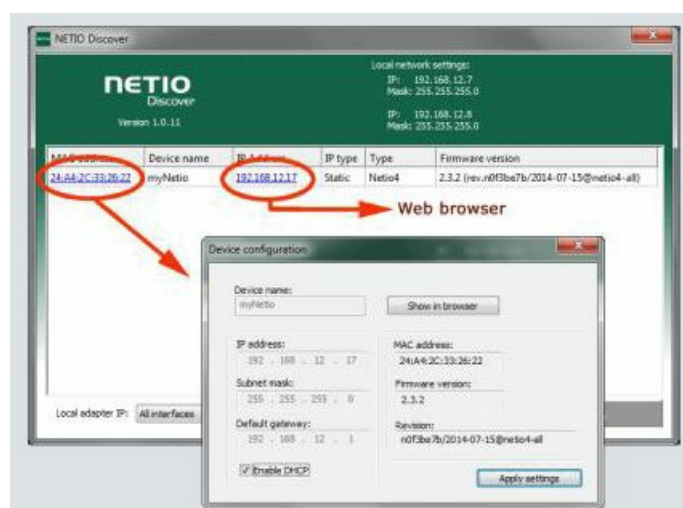
Environment	<p>IP30, protection rating = class 1</p> <p>Operating temperature -20°C to 65°C / 10A</p> <p>-20°C to 50°C / 16A</p> <p>Device rated for pollution degree 2.</p> <p>Permanent use in altitudes up to 2000 MASL (metres above sea level).</p> <p>Does not require additional cooling.</p>
--------------------	--

DECLARATION OF CONFORMITY

- **Manufacturer/Importer:** NETIO products a.s.
- **Address:** U Pily 3/103 143 00 Praha 4, Czech Republic
- **Product:** NETIO PowerBOX 4KE NETIO PowerBOX 4KF NETIO PowerBOX 4KG
- **RTTED:** The product mentioned above to which this declaration relates is in conformity with the essential requirements and other relevant requirements of the R&TTE Directive (1999/5/EC).
- **LVD:** The product mentioned above to which this declaration relates is in conformity with the essential requirements and other relevant requirements of Directive 2006/95/EC. The product mentioned above is in conformity with the following standards and/or other normative documents: EN 60950-1 EN 62368
- **RoHS:** The product mentioned above to which this declaration relates is in conformity with the essential requirements and other relevant requirements of the Directive 2011/65/EU (restriction of the use of certain hazardous substances in electrical and electronic equipment). The product mentioned above is in conformity with the following standards and/or other normative documents: EN 50581: 2012 Czech Republic, Prague, January 29th, 2021.

Installation utility

To find the device on the LAN network please install the NETIO Discover for MS Windows. Or use the mobile app "NETIO Mobile 2" for Android phones & search on the LAN.




Network mode	LAN
Cable	DHCP client
Default Web password	Username: “ admin ”, password: “ admin ”

Factory defaults

- Power off the device.
- Press and hold the SETUP button
- Power On the device and hold the button (approx. 10 seconds) until the RJ45 Yellow LED 3 times blink.
- Release the SETUP button
- www.netio-products.com

Documents / Resources

	<p>NETIO PowerBOX 4KE Remote Controlled Power Sockets [pdf] Installation Guide 4KE, 4KF, 4KG, PowerBOX 4KE, PowerBOX 4KF, PowerBOX 4KG, PowerBOX 4KE Remote Controlled Power Sockets, Remote Controlled Power Sockets, Power Sockets, Sockets</p>
--	---

References

- [NETIO products a.s. | Professional smart power sockets, strips and PDUs](#)
- [NETIO products a.s. | Professional smart power sockets, strips and PDUs](#)
- [NETIO products a.s. | Professional smart power sockets, strips and PDUs](#)
- [NETIO products a.s. | Professional smart power sockets, strips and PDUs](#)