

NETGEAR
WBE750 Insight
Manageable Wi-Fi
7 Access Point



NETGEAR WBE750 Insight Manageable Wi-Fi 7 Access Point Installation Guide

[Home](#) » [NETGEAR](#) » NETGEAR WBE750 Insight Manageable Wi-Fi 7 Access Point Installation Guide 

Contents

- [1 NETGEAR WBE750 Insight Manageable Wi-Fi 7 Access Point](#)
- [2 Product Usage Instructions](#)
- [3 FAQ](#)
- [4 Mount Kit Contents](#)
- [5 Adjusting the Size of the Mount Plate](#)
- [6 Wall and Ceiling Surface Mounting](#)
- [7 T-Bar and Recessed Ceiling Mounting](#)
- [8 Detaching the AP](#)
- [9 Documents / Resources](#)
 - [9.1 References](#)
- [10 Related Posts](#)

NETGEAR

NETGEAR WBE750 Insight Manageable Wi-Fi 7 Access Point



Specifications

- **Mount Kit Contents:** Mount plate, Deep clip (for up to 0.39 in. recessed drop ceiling), Shallow clip (for up to 0.24 in. flush or recessed drop ceiling)
- **Adjustable mount plate positions:** P1 (smallest) to P6 (largest)
- **Mounting positions:** A = Ceiling, Wall, or 4 Square Outlet Box, B = Single Gang Device Box, C = Double Gang Device Box, D = 4 Round Outlet Box, E = 3.5 Round Outlet Box, F = EU 60mm Device Box

Product Usage Instructions

Adjusting the Size of the Mount Plate

1. Loosen the screws at the current P positions on the mount plate.
2. Adjust the size by moving the upper and lower parts of the plate.
3. Tighten the screws at the new P positions.

Wall and Ceiling Surface Mounting

Position A: Ceiling, Wall, or 4 Square Outlet Box

- **Drywall Ceiling or Wall:** Use four 8-32 X 1.25 metal screws and anchors.
- **4 Square Outlet Box:** Use two or four 8-32 X 1 machine screws or thread-forming screws.
- **Position B: Single Gang Device Box, Wood Studs, or Joists**
- **Single Gang Device Box:** Use two 6-32 x 1 machine screws.
- **Wood Studs or Joists:** Use two 8-32 wood screws.

Position C: Double Gang Device Box

- Use four 6-32 x 1 machine screws.

Position D: 4-Round Outlet Box

- Use two 8-32 x 1 machine screws.

Position E: 3.5 Round Outlet Box

- Use two 8-32 x 1 machine screws.

Position F: EU 60mm Device Box

- Use two M3.5 X 25mm machine screws.

T-Bar and Recessed Ceiling Mounting

- **Step 1:** Select the deep or shallow clip based on the depth of the T-bar grid.

FAQ

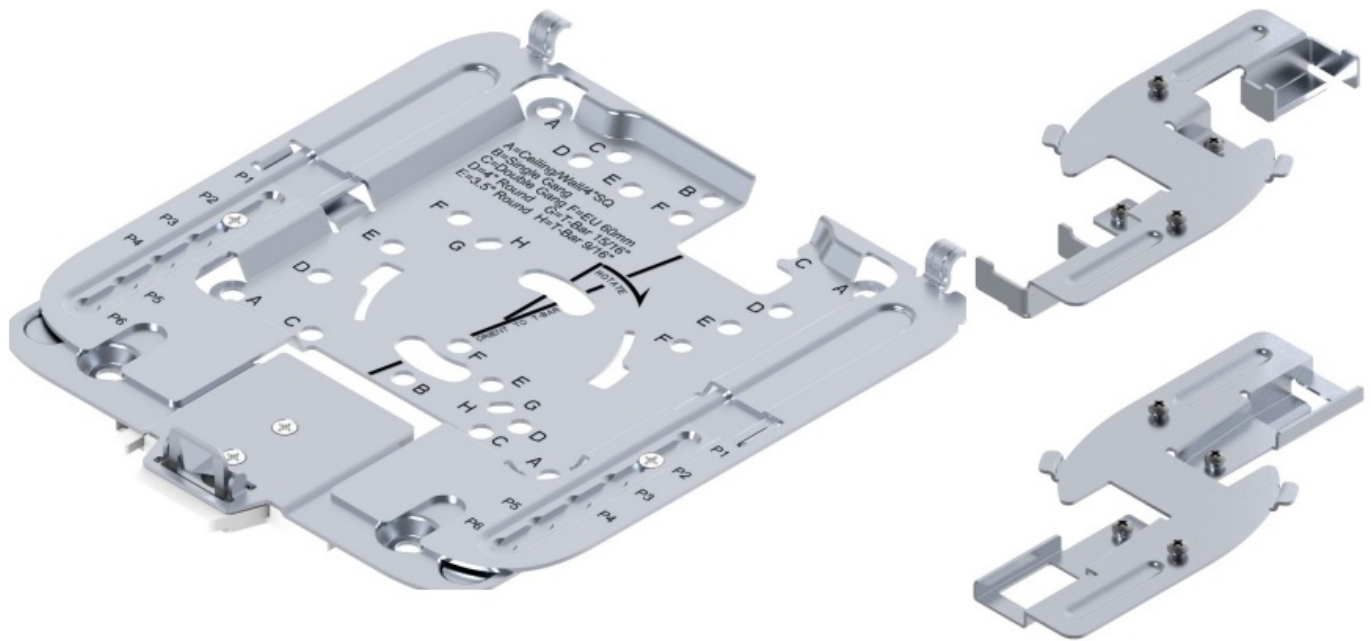
Q: Can I use fewer screws than recommended for mounting?

A: It is not recommended to use fewer screws than specified as it may compromise the stability and safety of the installation.

Q: How do I know which mounting position to use for my specific setup?

A: Refer to the mounting positions guide in the manual and choose the position that best suits your ceiling or wall type and the type of outlet box you are using.

Mount Kit Contents



Mount plate

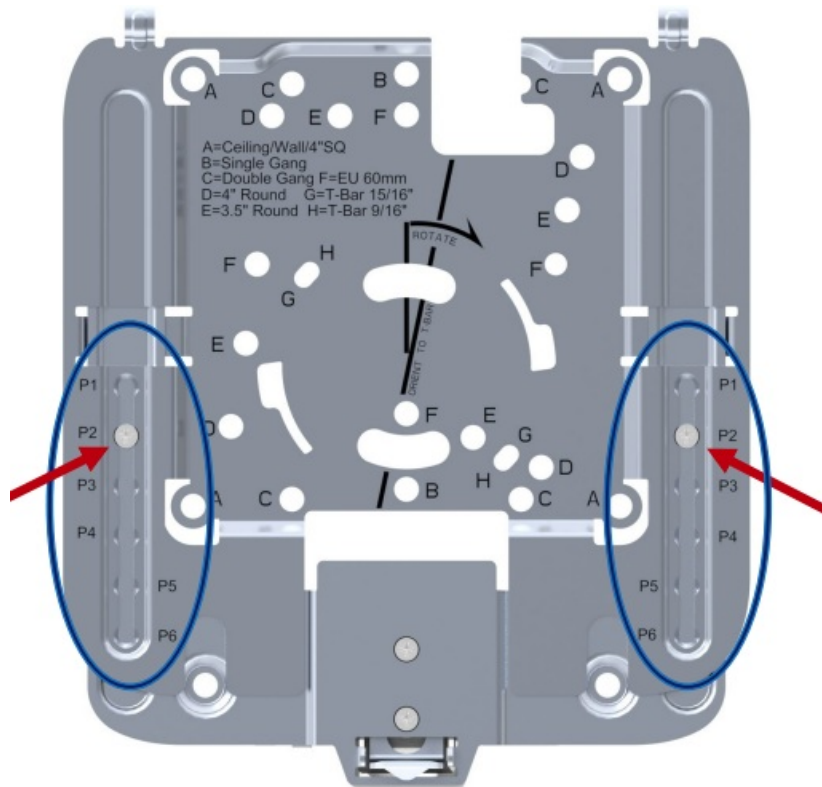
- **Deep clip**
 - Use for a recessed drop ceiling up to 0.39 in. (10 mm)
- **Shallow clip**
 - Use for a flush or recessed drop ceiling up to 0.24 in. (6 mm)
- **Note:** Screws and anchors are not included in the mount kit. You must obtain the correct screws and anchors for the mounting method that you decide on.

Adjusting the Size of the Mount Plate

- For some models, you might need to adjust the size of the mounting plate.
- Before you start any installation process, we recommend that you first hook the access point onto the mounting plate to determine if the size of the mounting plate is correct for your model access point.
- The mount plate includes adjustable positions P1 through P6. Position P1 is for the smallest size plate; Position P6 is for the largest size plate.

To adjust the size of the mounting plate:

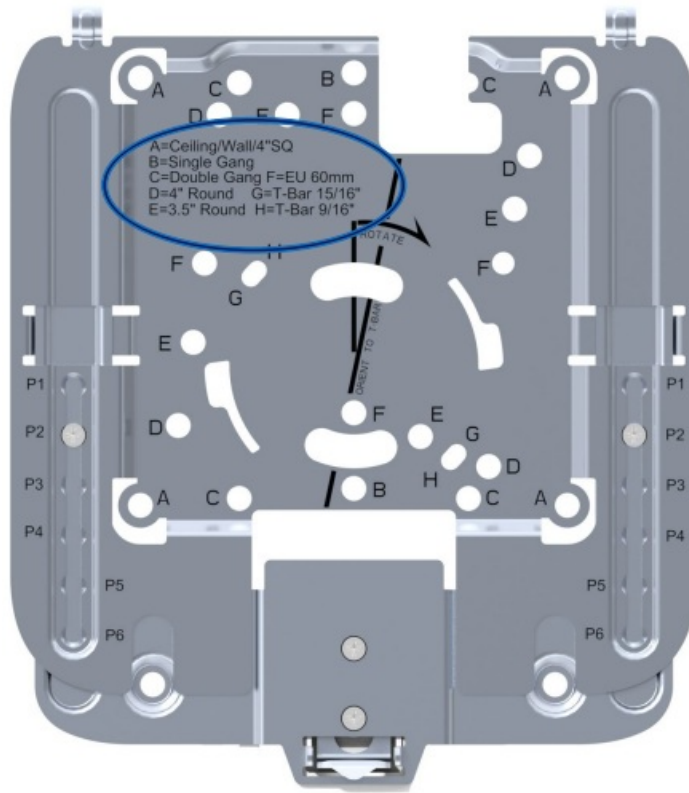
1. At the left and right side of the mounting plate, loosen the screws at their current "P" positions.
2. Move the upper and lower parts of the mounting plate to extend or reduce the size of the plate.
3. At the left and right side of the mounting plate, tighten the screws at their new "P" positions.



Wall and Ceiling Surface Mounting

Mounting positions:

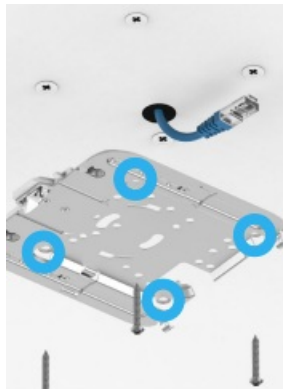
- **A** = Ceiling, Wall, or 4" Square Outlet Box
- **B** = Single Gang Device Box
- **C** = Double Gang Device Box
- **D** = 4" Round Outlet Box
- **E** = 3.5" Round Outlet Box
- **F** = EU 60mm Device Box
- **Note:** Outlet boxes and device boxes might also be called electrical junction boxes.



Position A: Ceiling, Wall, or 4" Square Outlet Box

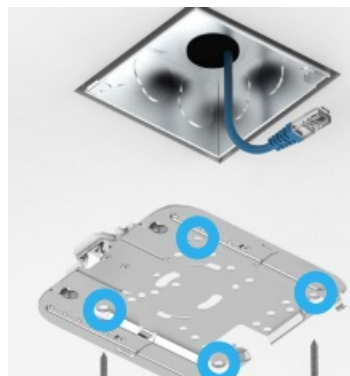
Drywall Ceiling or Wall

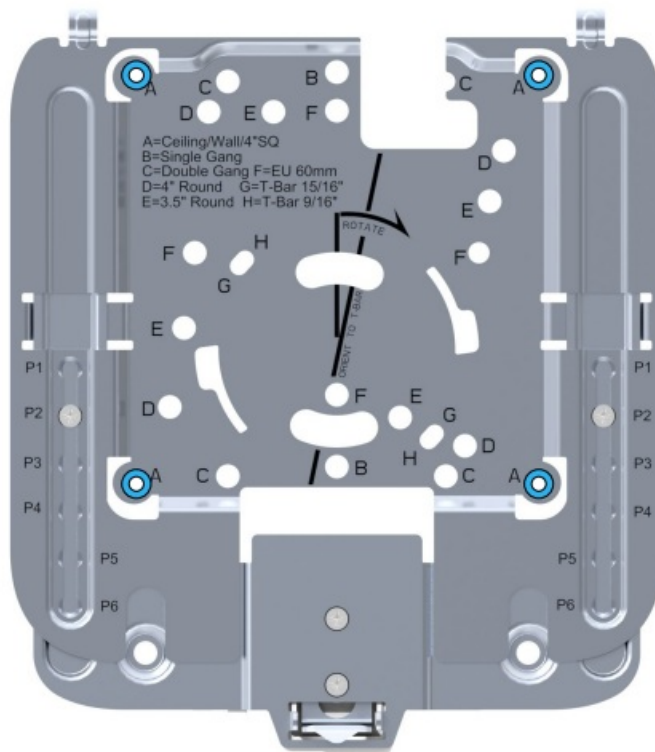
- Use four 8-32 X 1.25" metal screws and anchors. (Using only two screws and anchors is not sufficient.)



• 4" Square Outlet Box

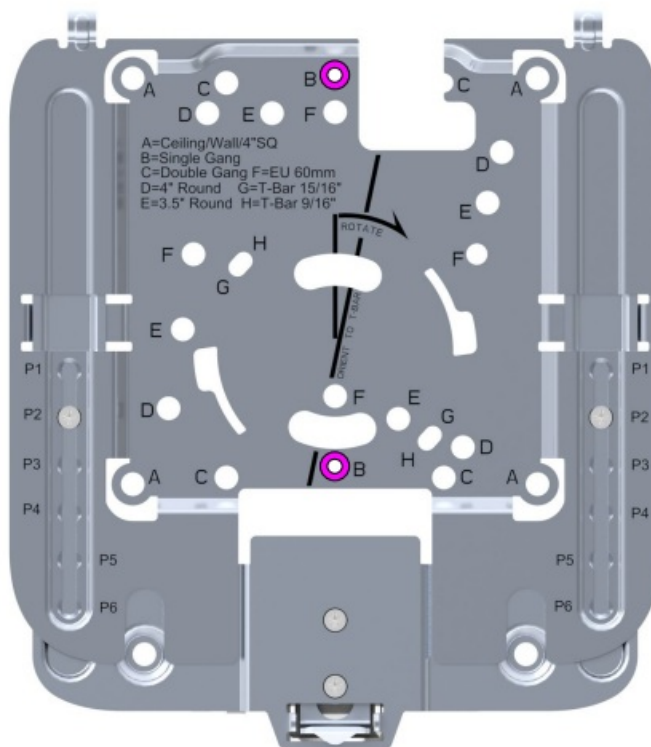
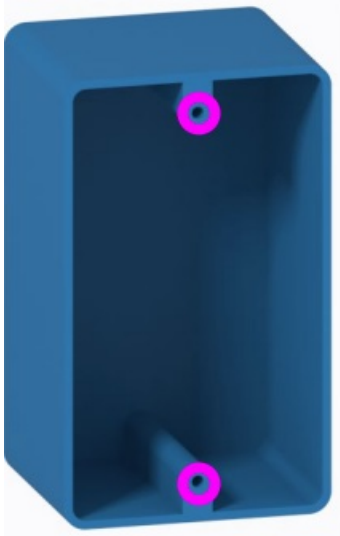
- Use two or four 8-32 X 1" machine screws or thread-forming screws.
- These screws should be supplied with the outlet box.





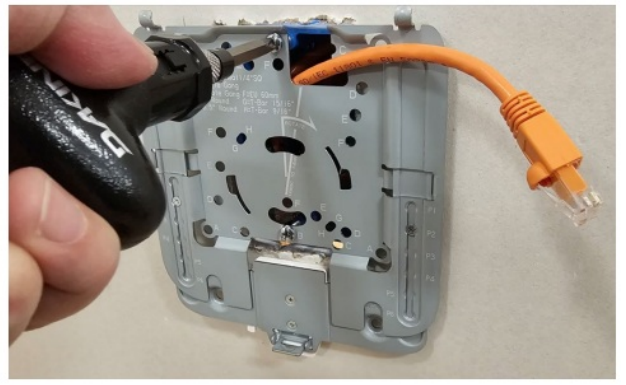
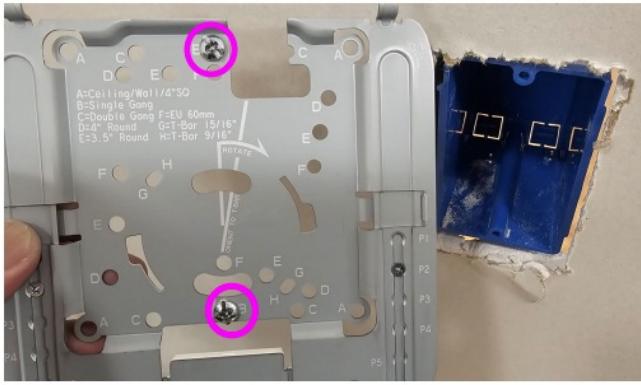
- **Caution:** We recommend that you use four 8-32 screws capable of maintaining a minimum pullout force of 20 lb. (9 kg).
- Use screws of the correct length with the correct ceiling or wall anchor based on your ceiling or wall substrate.

Position B: Single Gang Device Box, Wood Studs, or Joists

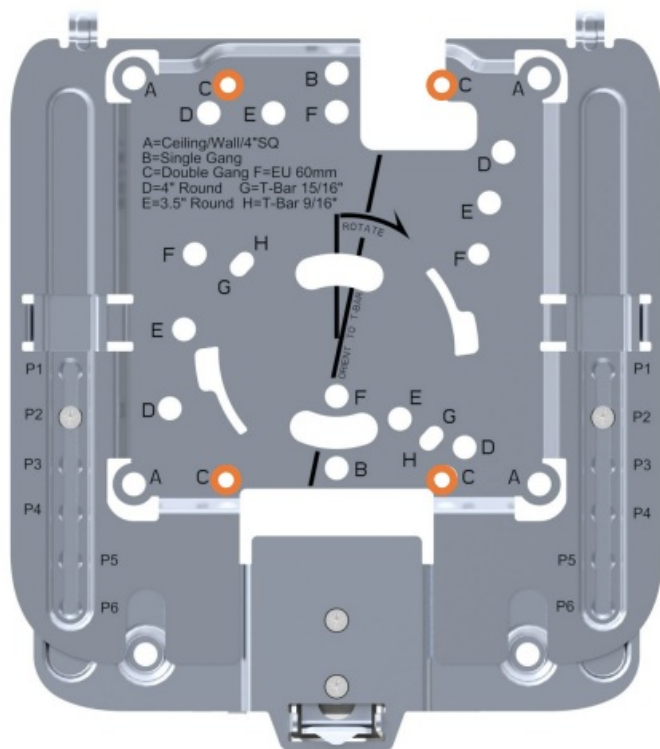
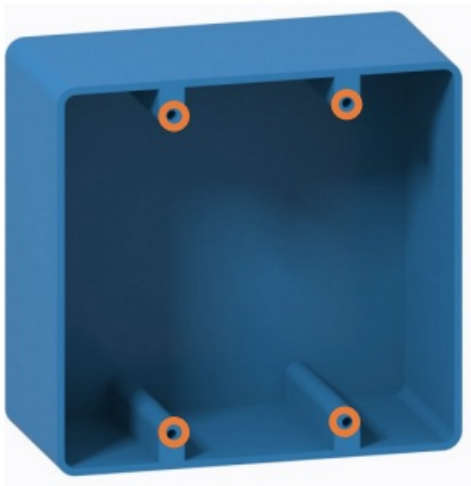


- For attachment to a single gang device box, use two 6-32 x 1" machine screws or thread-forming screws.
- These screws should be supplied with the device box.
- For attachment to a wood stud or joist, use two 8-32 wood screws of the appropriate length.

Single gang device box installation example

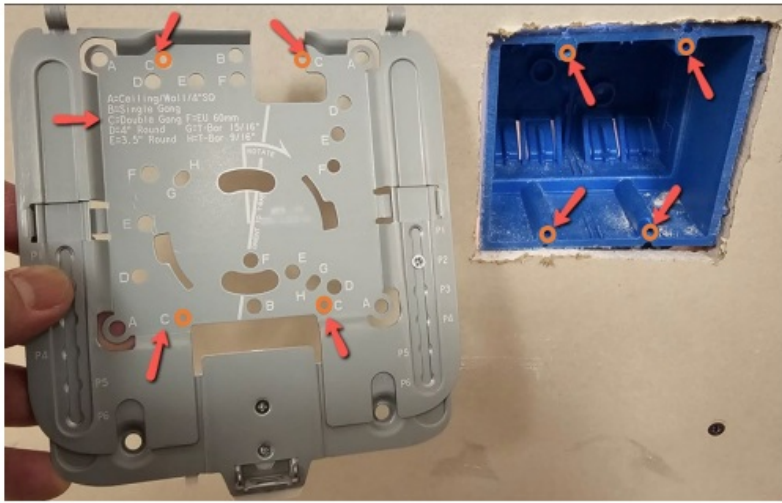


Position C: Double Gang Device Box

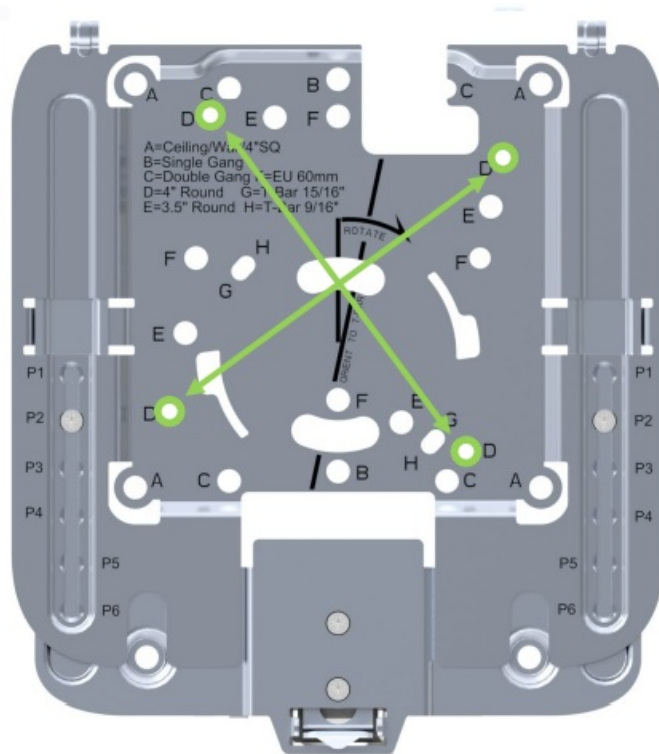
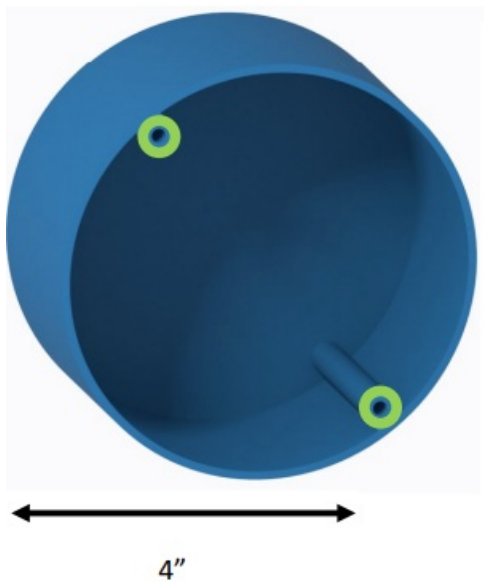


- Use four 6-32 x 1" machine screws or thread-forming screws.
- These screws should be supplied with the device box.

Double gang device box installation example



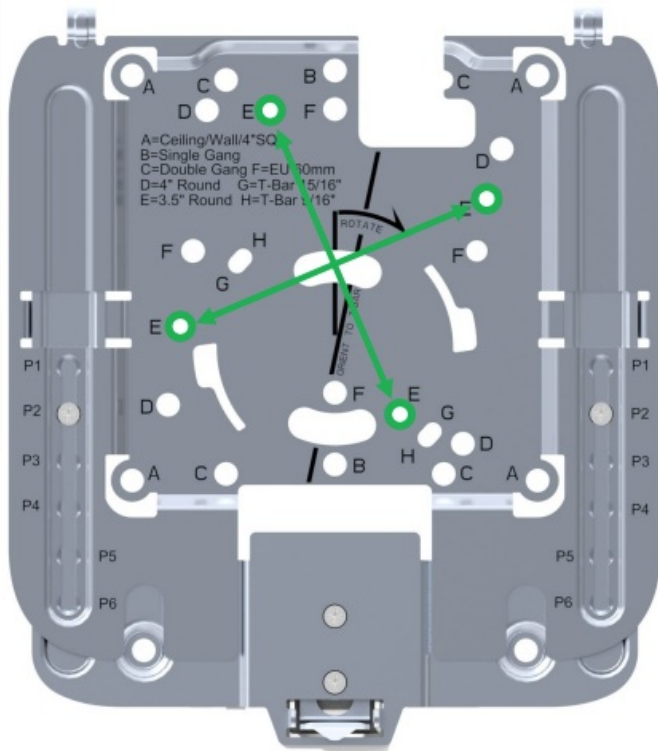
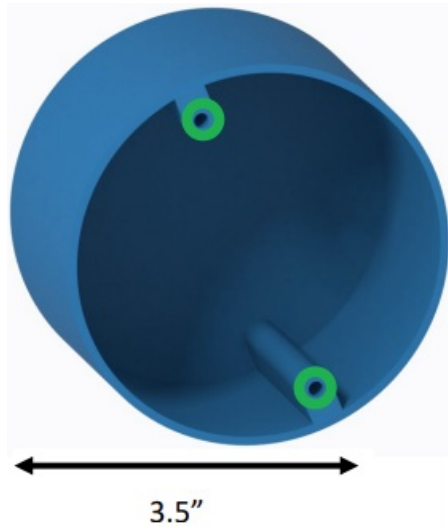
Position D: 4" Round Outlet Box



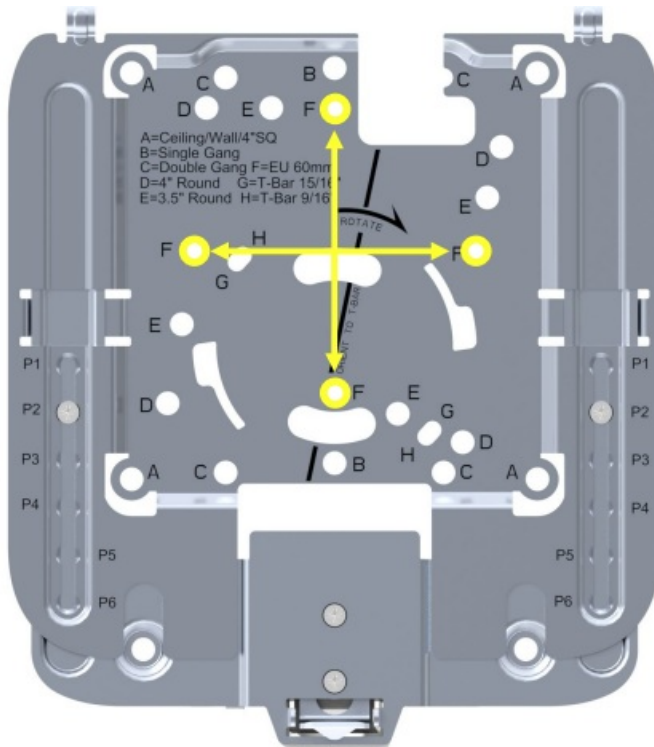
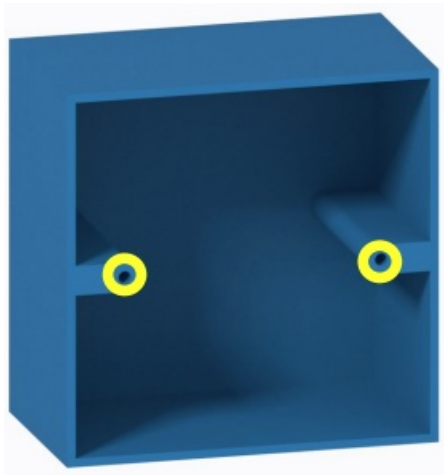
- Use two 8-32 x 1" machine screws or thread-forming screws. These screws should be supplied with the outlet box.

Position E: 3.5" Round Outlet Box

- Use two 8-32 x 1" machine screws or thread-forming screws. These screws should be supplied with the outlet box.



Position F: EU 60mm Device Box



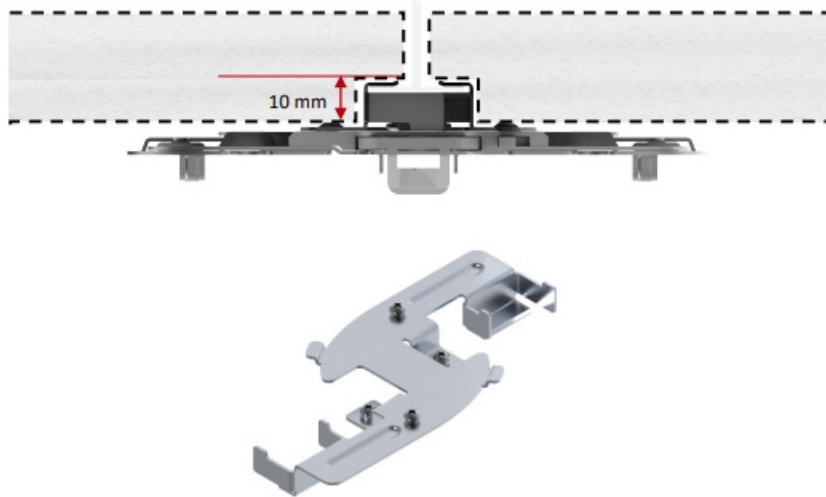
- Use two M3.5 X 25mm machine screws or thread-forming screws.
- These screws should be supplied with the device box.

T-Bar and Recessed Ceiling Mounting

Step 1. Select the deep or shallow clip based on the depth of the T-bar grid

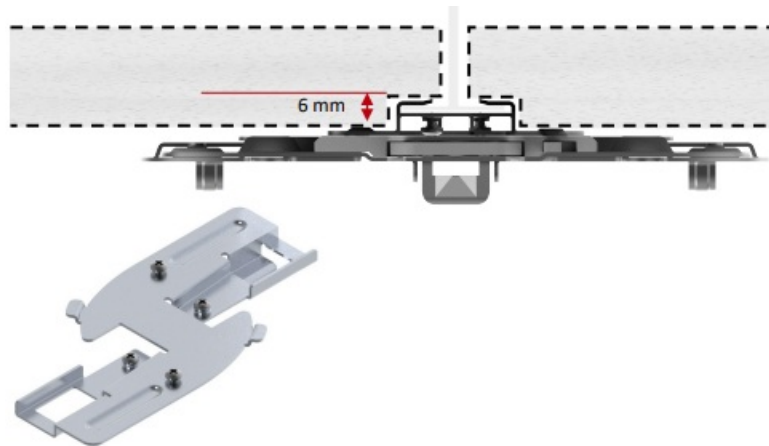
- **Deep clip**

- Use the deep clip for a drop ceiling with up to a 0.39 in. (10 mm) recessed T-bar grid



- **Shallow clip**

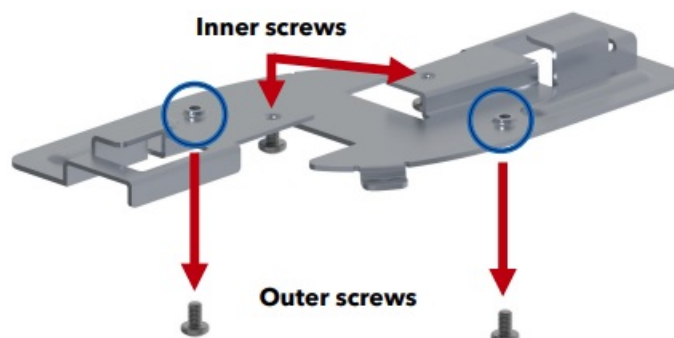
- Use the shallow clip for a drop ceiling with up to a 0.24 in. (6 mm) recessed T-bar grid



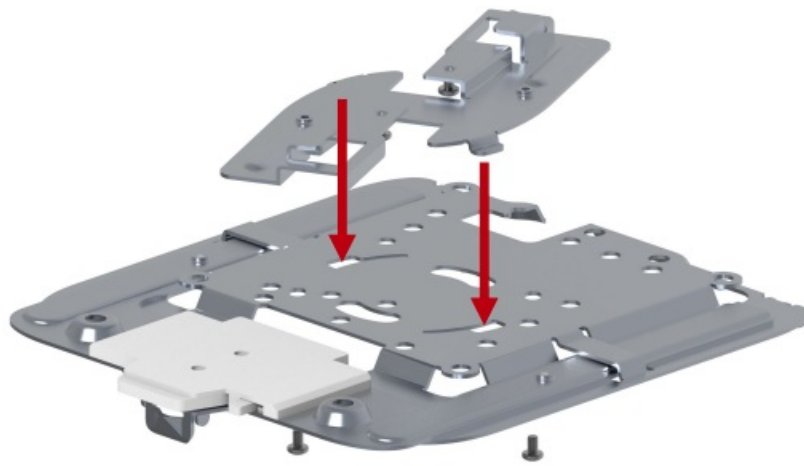
- **Note:** You can also use the shallow clip for a flush ceiling fitting.

Step 2. Attach the clip to the mounting plate

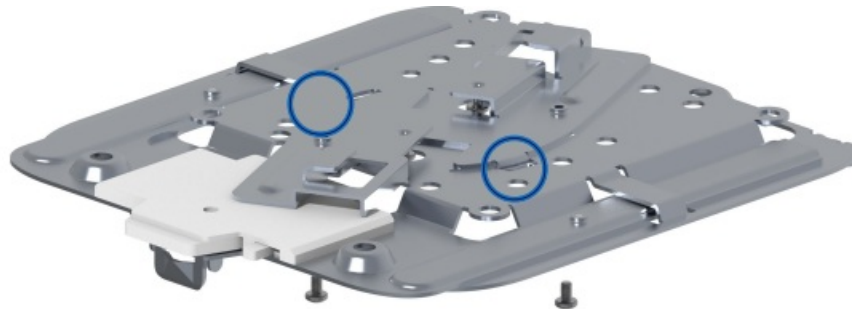
- **A.** Loosen the two inner M2 screws



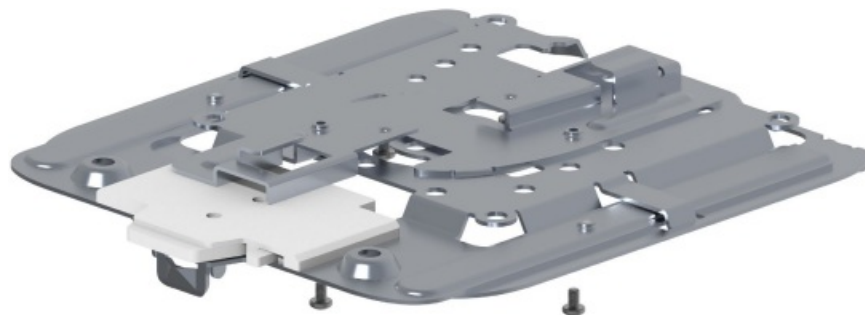
- **B.** Remove the two outer M2 screws and set them aside.



- **C.** Align the clip with the openings in the mounting plate and insert the clip in the mounting plate

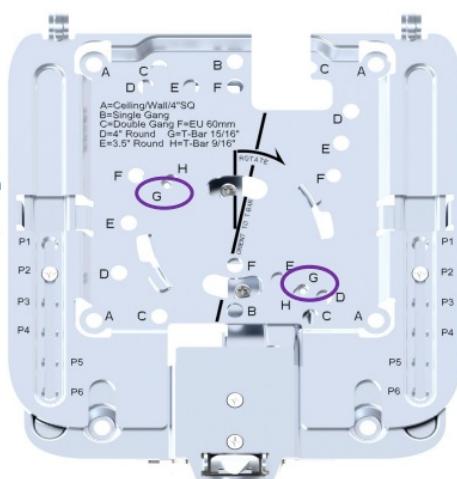


- **D.** Rotate the clip clockwise on the mounting plate.

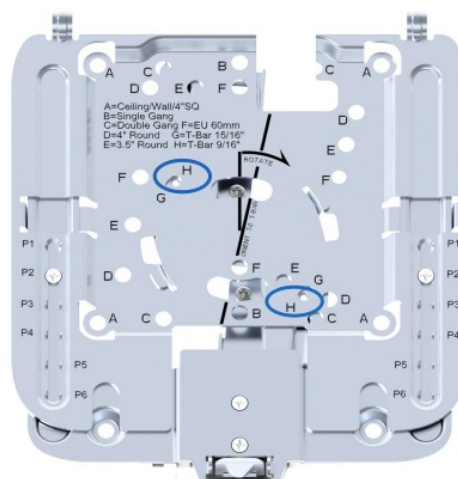


- **E.** Turn the mounting plate around and fasten the two M2 screws in position G or H to lock the clip to the mounting plate.

G = T-Bar 15/16"
Use position G for a T-bar with a width of 15/16 " (24 mm).



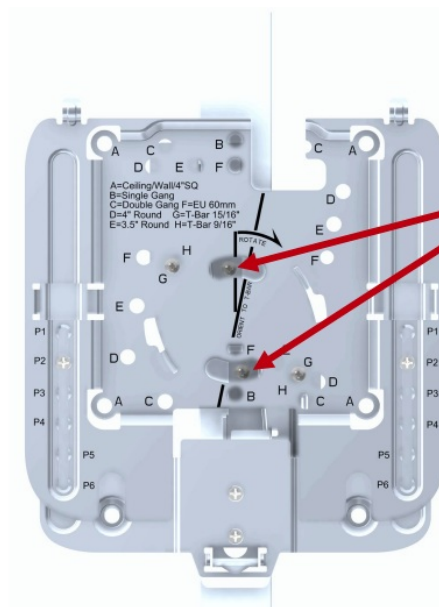
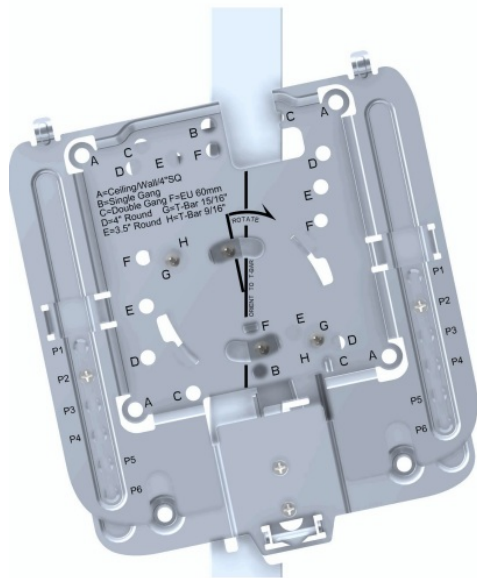
H = T-Bar 9/16"
Use position H for a T-bar with a width of 9/16 " (15 mm).



NE1

Step 3. Attach the mounting plate to the T-bar

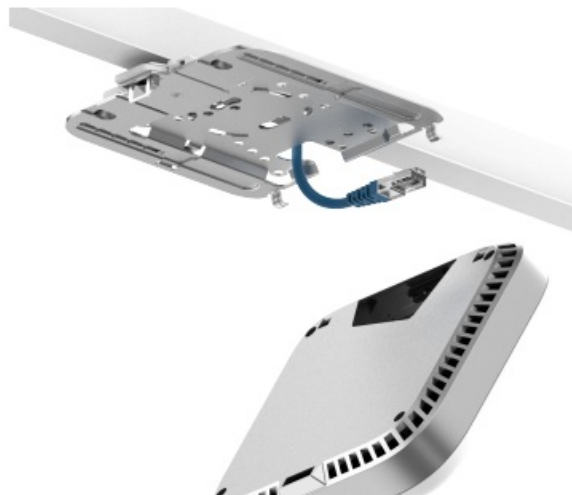
- **A.** Hold the mount plate at an angle and hook it onto the T-bar.
- **B.** Rotate the mounting plate so that the T-bar flanges fit into the clip anchors.



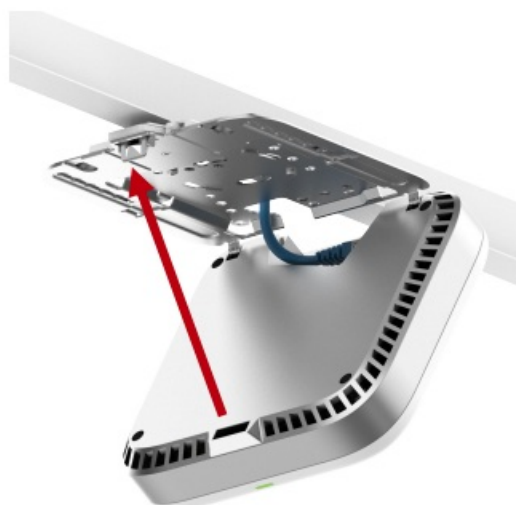
C. To secure the mount plate to the T-bar, reach through the slots under the T-bar to tighten the inner screws of the clip.

Step 4. Attach the AP to the mounting plate

- **A.** Attach the Ethernet cable to the AP.



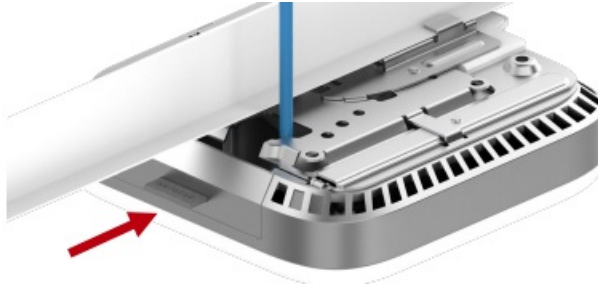
- **B.** Attach the AP to the hooks on the mounting plate and rotate the AP until the latch on the mounting plate engages.



- **C.** Move the lock switch into the lock position.

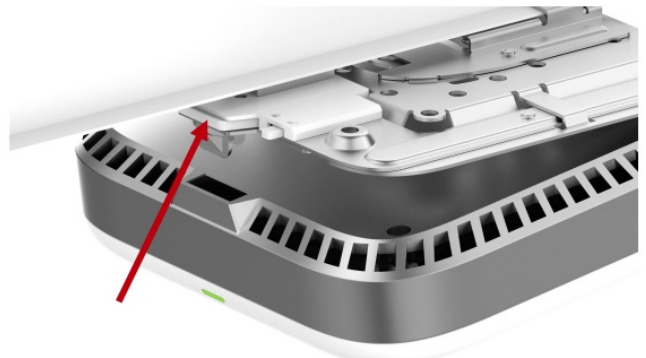


- **D.** Attach the port cover to the AP.



Detaching the AP

1. Move the lock switch into the unlock position.
2. Press the release button to disengage the latch.



Support and Community


- Visit <https://www.netgear.com/support/> to get your questions answered and access the latest downloads.
- You can also check out our NETGEAR Community for helpful advice at <https://community.netgear.com/>.

Regulatory and Legal

- If this product is sold in Canada, you can access this document in Canadian French at <https://www.netgear.com/support/download/>.
- For regulatory compliance information including the EU Declaration of Conformity, visit <https://www.netgear.com/about/regulatory/>.
- See the regulatory compliance document before connecting the power supply.
- For NETGEAR's Privacy Policy, visit <https://www.netgear.com/about/privacy-policy>.
- By using this device, you are agreeing to NETGEAR's Terms and Conditions at <https://www.netgear.com/about/terms-and-conditions>.
- If you do not agree, return the device to your place of purchase within your return period.

- Do not use this device outdoors. The PoE source is intended for intra-building connection only.
- **Applicable to 6 GHz devices only:** Only use the device indoors. The operation of 6 GHz devices is prohibited on oil platforms, cars, trains, boats, and aircraft, except that operation of this device is permitted in large aircraft while flying above 10,000 feet.
- Operation of transmitters in the 5.925-7.125 GHz band is prohibited for control of or communications with unmanned aircraft systems.
- **NETGEAR, Inc. 350 East Plumeria Drive San Jose, CA 95134, USA**
- **© NETGEAR, Inc., NETGEAR and the NETGEAR Logo are trademarks of NETGEAR, Inc.**
- **Any non-NETGEAR trademarks are used for reference purposes only.**
- **NETGEAR INTERNATIONAL LTD Floor 6, Penrose Two Penrose Dock, Cork, T23 YY09, Ireland**

Documents / Resources

	NETGEAR WBE750 Insight Manageable Wi-Fi 7 Access Point [pdf] Installation Guide WBE750, WBE750 Insight Manageable Wi-Fi 7 Access Point, Insight Manageable Wi-Fi 7 Access Point, Manageable Wi-Fi 7 Access Point, Wi-Fi 7 Access Point, Access Point, Point
---	--

References

- [N English - NETGEAR Communities](#)
- [N NETGEAR Support | NETGEAR](#)
- [N Download Center | Downloads and Documentation | NETGEAR](#)
- [User Manual](#)

[Manuals+](#), [Privacy Policy](#)

This website is an independent publication and is neither affiliated with nor endorsed by any of the trademark owners. The "Bluetooth®" word mark and logos are registered trademarks owned by Bluetooth SIG, Inc. The "Wi-Fi®" word mark and logos are registered trademarks owned by the Wi-Fi Alliance. Any use of these marks on this website does not imply any affiliation with or endorsement.