



NETGEAR WBC502 Insight Instant Wireless AirBridge Installation Guide

[Home](#) » [NETGEAR](#) » NETGEAR WBC502 Insight Instant Wireless AirBridge Installation Guide 



Installation Guide
Insight Instant
Wireless AirBridge
Model WBC502

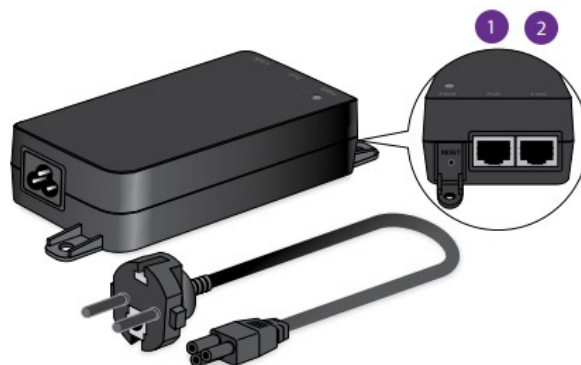
Contents

- [1 Package contents](#)
- [2 AirBridge overview](#)
- [3 Prepare for installation](#)
- [4 Register your device in NETGEAR Insight](#)
- [5 Power on the AirBridge](#)
- [6 Connect to the network we](#)
- [7 Access the Day Zero Easy Setup](#)
- [8 Configure the master](#)
- [9 Configure the satellite](#)
- [10 Install the master and satellite](#)
- [11 Other supported modes](#)
- [12 Documents / Resources](#)
 - [12.1 References](#)
- [13 Related Posts](#)

Package contents

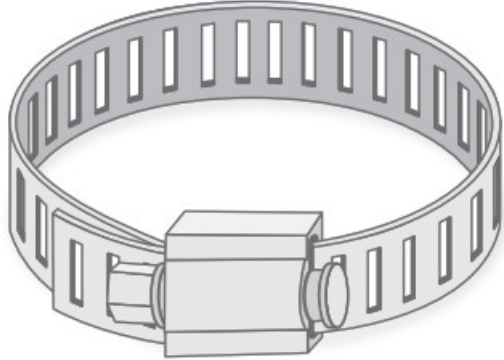
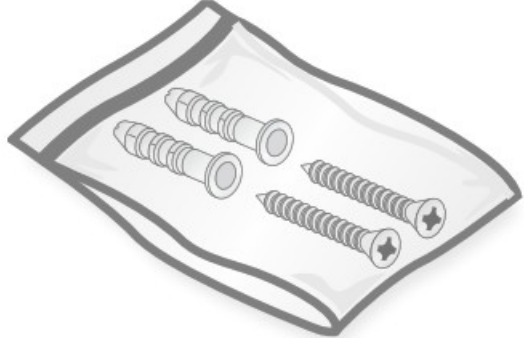


Insight Instant Wireless AirBridge
(Model WBC502)



Power adapter and power cord
(varies by region)

1. PoE port: Connect to AirBridge LAN1
2. LAN ports: Connect to the network

	<p>Pole mounting strap Screw placement guide</p>
	<p>Wall mount screws and anchors Installation guide</p>

Other AirBridge (WBC502) features:

- 2.4 GHz management SSID
- 5 GHz SSID extends your network
- Range of 1.8 miles (3 km) or more

Terms of Use

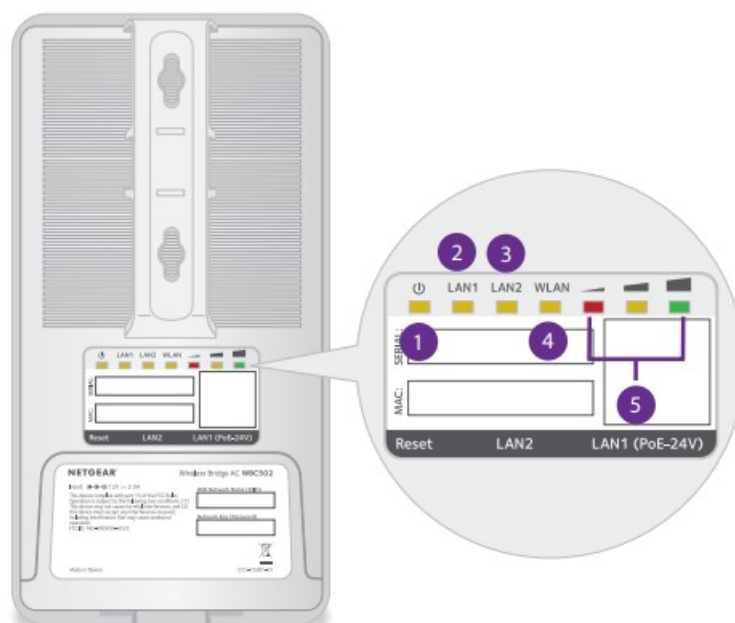
This device must be professionally installed. It is the installer's responsibility to follow local country regulations including operations within legal frequency channels, output power, and DFS requirements. Vendor or Reseller or Distributor is not responsible for illegal wireless operations. Please see Device's Terms and Conditions for more details.

AirBridge overview

Front view

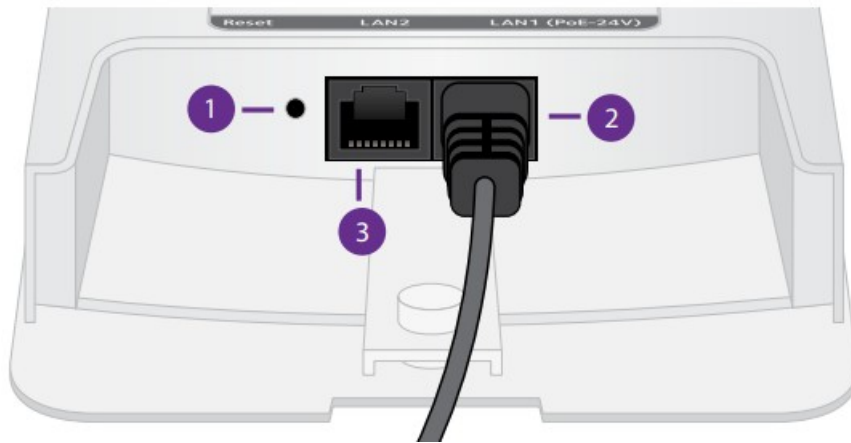


Back view



- 1) Power LED
- 2) LAN1 LED: Power and network
- 3) LAN2 LED: Ethernet device
- 4) WLAN LED: WiFi connectivity
- 5) Signal strength indicator LEDs

Bottom view



- 1) Reset button
- 2) LAN1: PoE and network connectivity
- 3) LAN2: Optional device for satellite-only

Prepare for installation

This installation guide describes how you can use the local browser user interface (UI) to establish a WiFi bridge between two Insight Instant Wireless AirBridge devices in a point-to-point master-to-satellite setup.

Note: You can also use **NETGEAR** Insight to configure a point-to-point (or point- to multipoint) master-to-satellite setup. However, to configure an access point or client bridge setup, you must use the WBC502 local browser UI. First set up the AirBridge master, then set up the AirBridge satellite. The master remains connected to the network to provide connectivity to the satellite after you install the satellite at the detached location.

We recommend that you complete the initial pairing at a staging area with easy access to the network that is to supply connectivity to the master.

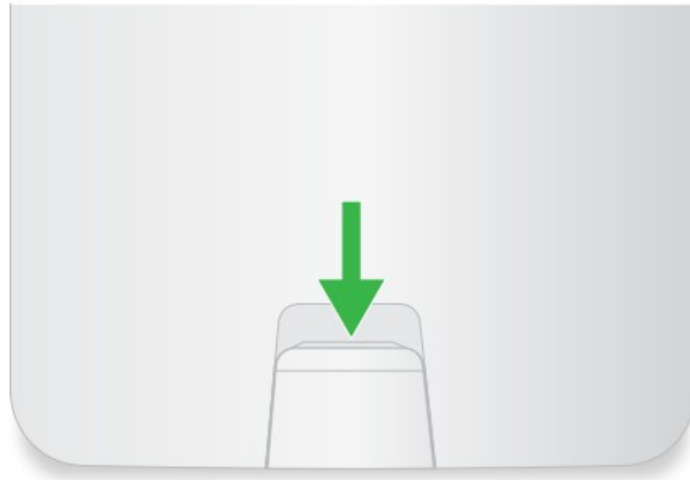
Register your device in NETGEAR Insight

1. On your mobile device, visit the Apple App Store or Google Play Store, search for **NETGEAR** Insight, and download the latest version of the app.
2. Open the NETGEAR Insight app on your mobile device.



3. If you do not own a NETGEAR account, tap **Create NETGEAR Account** and follow the onscreen instructions.
4. Enter the email address and password for your account and tap **login**.
5. Tap + in the upper right corner.
6. Either use the camera on your phone to scan the bar code, or type in the serial number.
7. Follow the instructions on the screen to register the device.

Power on the AirBridge



1. Pull down on the latch on the front of the device and remove the bottom panel of the AirBridge to expose the ports.



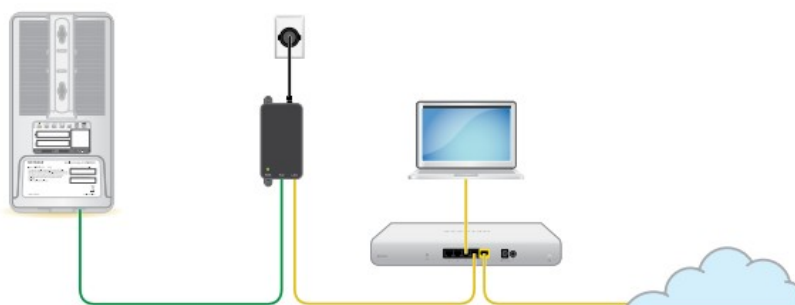
2. With the back of the AirBridge facing you, connect an RJ-45 Ethernet cable (not provided) to the AirBridge 24V PoE port on the RIGHT side of the device. Connect the other end of the cable to the PoE port on the power adapter.

WARNING: Power on the AirBridge only with an Ethernet cable connected to the provided power adapter. Do not use any other power source. This is not a standard PoE port. Using any other power source can damage the device.

3. Insert the plug into a power source.

All the LEDs light and then go off. The power LED stays lit.

Connect to the network we



We recommend that you connect the AirBridge to a network with Internet access during setup. If the network

includes a DHCP server, such as a router, the AirBridge is automatically assigned a new IP address. (The default IP address is 192.168.0.100.) To prevent a network loop, set up the AirBridge master first, and then disconnect it from the network before you set up the AirBridge satellite.

1. Connect the LAN port on the power adapter to a router or switch on your network.
(Do not connect the LAN2 port on the master directly to your network.)
2. Connect your mobile device or computer to the same network where you connected the AirBridge that you are setting up.

Access the Day Zero Easy Setup

1. Enter the IP address of the AirBridge.

If you don't know the IP address of the AirBridge, use the NETGEAR Insight app or another discovery method.

Your browser might display a security message. Ignore it or add an exception.

For the Management Mode, select the Standalone Mode radio button. The page adjusts to show the Day Zero Easy Setup settings.

Configure the master

The first time that you access the local browser UI of an AirBridge, you must set the operation mode, a new admin local device password, a unique name and new passphrase for the 5 GHz SSID, and a new passphrase for the management SSID. Tip: Be sure to write down the SSID name and all your passwords.

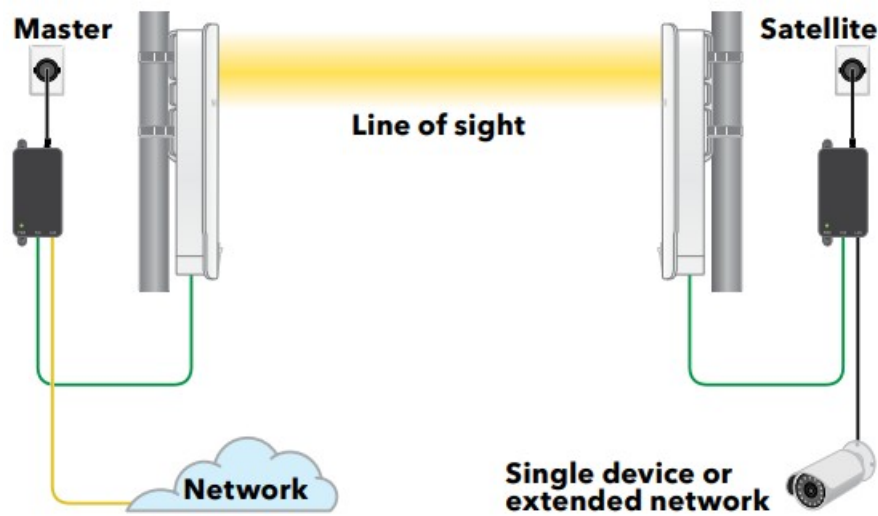
1. In the **AP Login New Password** field, enter a new admin local device password.
2. From the **Operation mode** menu, select **AirBridge Master**.
3. In the **SSID** field, enter a new name for the 5 GHz SSID.
4. In the **Passphrase** field, enter a new passphrase for the 5 GHz SSID.
5. In the **Management WPA2 Passphrase** field, enter a new passphrase for the management SSID, which lets you manage the master over a WiFi connection.
6. Click the **Apply** button. Your settings are saved and the master reboots to apply your settings.
7. Log in as admin with the new local device password, and agree to the Terms of Use. You can now log out and disconnect the master.

Configure the satellite

1. Disconnect the AirBridge master from the network, and then connect the AirBridge satellite to the network.
2. Repeat step 3. Power on the AirBridge and step 5. Access the Day Zero Easy Setup on the satellite.
3. In the **AP Login New Password** field, enter a new admin local device password.
4. From the **Operation mode** menu, select **AirBridge Satellite**.
5. In the **SSID** field, enter the same name that you set for the master.
6. In the **Passphrase** field, enter the same passphrase that you set for the master.
7. In the **Management WPA2 Passphrase** field, enter a new passphrase for the management SSID, which lets you manage the satellite over a WiFi connection.
8. Click the **Apply** button. Your settings are saved and the satellite reboots to apply your settings.
9. Log in as admin with the new local device password, and agree to the Terms of Use.

10. View the LEDs on the back of the satellite device. The green LED on the far right lights, indicating a strong signal. You can now log out and disconnect the satellite.

Install the master and satellite



1. Connect the LAN port on the power adapter for the master to your wired network.
2. Install the master in such a way that it is in a direct line of sight to the location where you want to install the satellite.
3. Install the satellite at the detached location, facing the front panel of the master at the main site.
You can place the satellite at a distance of 1.8 miles (3 km) or more from the master.
4. Connect power to the devices. After the satellite establishes a WiFi connection with the master, the signal strength indicator (SSI) LEDs light.
5. Use the SSI LEDs to adjust the position of the satellite for an optimal WiFi signal.

Green LED		Right SSI LED solid green. The signal for the WiFi connection is strong. The left and middle SSI LEDs are off.
Amber LED		Middle SSI LED solid amber. The signal for the WiFi connection is moderately good. The left and right SSI LEDs are off.
Red LED		Left SSI LED solid red. The signal for the WiFi connection is weak. The middle and right SSI LEDs are off.

Other supported modes

Other supported operation modes for the AirBridge include point-to-multipoint master-to-satellite, access point, and client bridge. For more information, see the user manual at netgear.com/support/product/WBC502. Insight Premium and Insight Pro subscribers can use the Insight Cloud portal to configure a point-to-point master-to-satellite setup. For more information, see the **NETGEAR**

Knowledge Base.

Support and Community Visit netgear.com/support to get your questions answered and access the latest downloads.

You can also check out our **NETGEAR A** community for helpful advice at community.netgear.com.

For more information about Insight Instant Mesh-capable products, visit netgear.com.

Regulatory and Legal

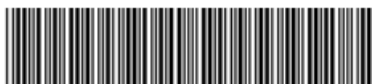
(If this product is sold in Canada, you can access this document in the Canadian French at <https://www.netgear.com/support/download/>.)

For regulatory compliance information including the EU Declaration of Conformity, visit <https://www.netgear.com/about/regulatory/>.

See the regulatory compliance document before connecting the power supply.

For **NETGEAR's** Privacy Policy, visit <https://www.netgear.com/about/privacy-policy>.

By using this device, you are agreeing to **NETGEAR's** Terms and Conditions at <https://www.netgear.com/about/terms-and-conditions>. If you do not agree, return the device to your place of purchase within your return period.



201-26017-03

NETGEAR, Inc. 350 East Plumeria Drive San Jose, CA 95134, USA April 2020	NETGEAR INTERNATIONAL LTD Floor 1, Building 3, University Technology Centre Curraheen Road, Cork, T12EF21, Ireland
--	---

© NETGEAR, Inc., NETGEAR and the NETGEAR

Logo are trademarks of NETGEAR, Inc. Any non-NETGEAR trademarks are used for reference purposes only.

Documents / Resources

	NETGEAR WBC502 Insight Instant Wireless AirBridge [pdf] Installation Guide WBC502, Insight Instant Wireless AirBridge
--	--

References

- [N English - NETGEAR Communities](#)
- [N NETGEAR: Advanced WiFi & Networking](#)
- [N NETGEAR Support | NETGEAR](#)
- [N WBC502 | Wireless AirBridge | NETGEAR Support](#)
- [N NETGEAR: Advanced WiFi & Networking](#)
- [N What is NETGEAR | Company Info | NETGEAR](#)