

NETGEAR S3300-28X Gigabit Ethernet Stackable Smart Managed Pro Switch



NETGEAR S3300-28X Gigabit Ethernet Stackable Smart Managed Pro Switch Installation Guide

[Home](#) » [NETGEAR](#) » NETGEAR S3300-28X Gigabit Ethernet Stackable Smart Managed Pro Switch Installation Guide 

Contents

- [1 NETGEAR S3300-28X Gigabit Ethernet Stackable Smart Managed Pro Switch](#)
- [2 Package contents](#)
- [3 Discover and register the switch](#)
- [4 Configure the switch with a static IP address](#)
- [5 Configure the switch](#)
- [6 Troubleshooting](#)
- [7 Documents / Resources](#)
 - [7.1 References](#)

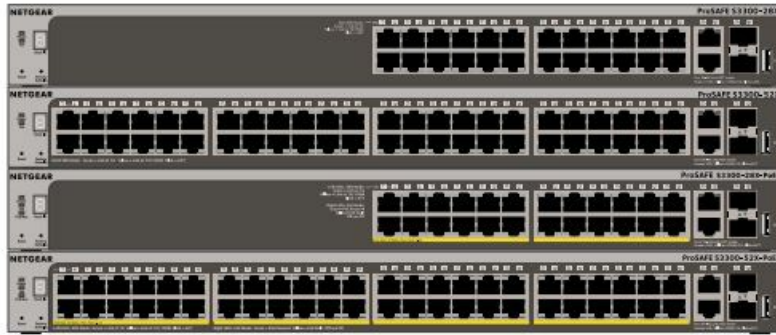
NETGEAR

NETGEAR S3300-28X Gigabit Ethernet Stackable Smart Managed Pro Switch



Installation Guide

28-Port and 52-Port Gigabit Ethernet Stackable Smart Managed Pro Switch with 2 Copper 10G and 2 SFP+ 10G Ports Model S3300-28X and S3300-52X 28-Port and 52-Port Gigabit Ethernet PoE+ Stackable Smart Managed Pro Switch with 24 and 48 PoE+ Ports, 2 Copper 10G and 2 SFP+ 10G Ports Model S3300-28X-PoE+ and S3300-52X-PoE



Package contents

- Switch
- Power cord
- Rubber footpads for tabletop installation
- Rack-mount kit for rack installation
- Installation guide

Note: For more information about installation, see the hardware installation guide, which you can download from netgear.com/support/.

Connect the switch to your network

Note: If you are using static IP addresses in your network, configure the switch IP address before you connect the switch to a network. See [Configure the switch with a static IP address](#).

1. Connect network devices to the ports on the switch.
2. Connect one port on the switch to a network router that provides Internet connectivity.
3. Power on the switch.

Check the PoE status

PoE+ power is provided by the S3300-28X-PoE+ and S3300-52X-PoE+ switches on all ports. The switch can supply up to 30W PoE+ (IEEE 802.3at) to each port, with a PoE power budget of 195W and 390W across all active PoE+ ports.

The PoE Max LED indicates the status of the PoE budget on the switch:

- Off. Sufficient. More than 7W of PoE power is available.
- Solid yellow. Less than 7W of PoE power is available.
- Blinking yellow. At least once during the previous two minutes, less than 7W of PoE power was available.

Discover and register the switch

If the switch is connected to a WiFi router or access point and to the Internet, you can use the NETGEAR Insight app to discover the switch in your network, register the switch with NETGEAR, and activate your warranty.

1. On your mobile device, visit the app store, search for NETGEAR Insight, and download the latest version of the app.



2. Connect your mobile device to the same WiFi network as the switch.
 3. Open the NETGEAR Insight app.
 4. If you did not set up a NETGEAR account, tap Create NETGEAR Account and follow the onscreen instructions.
 5. Enter the email address and password for your account and tap LOG IN. After you log in to your account, the switch displays in the devices list.
 6. Tap + in the upper right corner.
 7. Either use the camera on your phone to scan the serial number bar code located on the bottom of the switch, or enter the serial number.
 8. Tap Go.
 9. Follow the onscreen instructions to add your switch to a network location.
 10. The switch is registered and added to your NETGEAR account. You can now view and monitor the switch.
- Note: Model S3300 Smart Managed Pro switches are not Insight manageable.

Configure the switch with a static IP address

Note: If your network uses a DHCP server, this section does not apply. If you are using static IP addresses in your network, configure the switch IP address before you connect the switch to a network.

1. Configure a computer with a static IP address in the 192.168.0.x subnet.
2. Power on the switch, and connect your computer to the switch using an Ethernet cable.
3. Open a web browser and enter 192.168.0.239 in the address bar. (The default IP address of the switch is 192.168.0.239.) A login page displays.
4. Enter password for the password. The System Information page displays.
5. Select System > Management > IP Configuration. Select the Static IP Address radio button.
6. Enter the static IP address, subnet mask, and default gateway IP address that you want to assign to the switch and click the Apply button. Your settings are saved.

Configure the switch

To configure the switch either:

- Use the local browser browser-based interface.
- Install the NETGEAR Switch Discovery Tool on your Mac or a 64-bit Windows-based computer.
- Install the Smart Control Center utility on your Windows-based computer.

Access the local browser interface

1. For initial configuration, open a web browser on a computer that is on the same network and subnet as the switch and enter the switch's IP address.
 - If you are unsure how to determine the IP address of the switch, you can use the Smart Control Center utility.
2. A login page displays. Enter password for the password.
 - The System Information page displays.

3. Configure the switch for your network.

- For information about switch configuration, see the user manual for your switch, which you can download from netgear.com/support/.

Other discovery and configuration methods

The NETGEAR Switch Discovery Tool and the Smart Control Center utility let you discover the IP address and configure the switch.

- NETGEAR Switch Discovery Tool. You can use a Mac or a 64-bit Windows-based computer on the same network as the switch. To download this tool, visit netgear.com/support/product/netgear-switch-discovery-tool.aspx.
- Smart Control Center utility. You can use a Windows-based computer on the same network as the switch. To download this utility, visit netgear.com/support/product/SCC.

Troubleshooting

Troubleshooting tips

Here are some tips for correcting simple problems that might occur.

- Be sure to power on your computer and switch in the following sequence:
 - a. Turn on the switch and wait about two minutes.
 - b. Turn on the computer and connect it to the switch.
- Make sure the Ethernet cables are plugged in. For each powered-on computer connected to the switch, the corresponding switch LAN port status LED is lit.
- Make sure the network settings of the computer are correct. In most cases, computers should be configured to obtain an IP address through DHCP. If your network uses static IP addresses, be sure that the switch and computer are configured with valid IP addresses. For more information, see the user manual.

Support

Thank you for purchasing this NETGEAR product. You can visit

- <https://www.netgear.com/support>

to register your product, get help, access the latest downloads and user manuals, and join our community. We recommend that you use only official NETGEAR support resources. Si ce produit est vendu au Canada, vous pouvez accéder à ce document en français canadien à

- <https://www.netgear.com/support/download>

(If this product is sold in Canada, you can access this document in Canadian French at

- <https://www.netgear.com/support/download>

For regulatory compliance information including the EU Declaration of Conformity, visit

- <https://www.netgear.com/about/regulatory>


See the regulatory compliance document before connecting the power supply. Do not use this device outdoors. If you connect cables or devices that are outdoors to this device, see

- <https://kb.netgear.com/000057103>

for safety and warranty information.

NETGEAR INTERNATIONAL LTD Floor 1, Building 3 University Technology Centre Curraheen Road, Cork, T12EF21, Ireland

Documents / Resources

	<p>NETGEAR S3300-28X Gigabit Ethernet Stackable Smart Managed Pro Switch [pdf] Installation Guide</p> <p>S3300-28X Gigabit Ethernet Stackable Smart Managed Pro Switch, S3300-28X, Gigabit Ethernet Stackable Smart Managed Pro Switch, Ethernet Stackable Smart Managed Pro Switch, Stackable Smart Managed Pro Switch, Smart Managed Pro Switch, Managed Pro Switch, Switch</p>
---	---

References

- [N Switch Discovery Protocol | Product | Support | NETGEAR](#)
- [N Do I need to use a surge protector with my NETGEAR Business device? - NETGEAR Support](#)
- [N Regulatory | NETGEAR](#)
- [N NETGEAR Support | NETGEAR](#)
- [N Download Center | Downloads and Documentation | NETGEAR](#)
- [N Error | NETGEAR](#)
- [User Manual](#)

[Manuals+](#), [Privacy Policy](#)

This website is an independent publication and is neither affiliated with nor endorsed by any of the trademark owners. The "Bluetooth®" word mark and logos are registered trademarks owned by Bluetooth SIG, Inc. The "Wi-Fi®" word mark and logos are registered trademarks owned by the Wi-Fi Alliance. Any use of these marks on this website does not imply any affiliation with or endorsement.