



NETGEAR FS524 24 Port Rackmount Ethernet Switch Specifications And Datasheet

[Home](#) » [Support](#) » NETGEAR FS524 24 Port Rackmount Ethernet Switch Specifications And Datasheet 

Contents

- [1 NETGEAR FS524 24 Port Rackmount Ethernet Switch](#)
- [2 Introduction](#)
- [3 PACKAGE CONTENTS](#)
- [4 Highlight](#)
- [5 TECHNICAL SPECIFICATIONS](#)
- [6 Warranty](#)
- [7 Support](#)
- [8 Connection](#)
- [9 FAQ's](#)
- [10 Related Posts](#)

NETGEAR

NETGEAR FS524 24 Port Rackmount Ethernet Switch



Introduction

NETGEAR's Fast Ethernet switches provide a cost-effective way to instantaneously increase network performance while preserving most of your network investment, including installed cabling and end users' software and hardware. These switches are ideal for intermixing 10 and 100-Mbps devices. They provide you with automatic speed and full/half-duplex sensing per port. Running in full-duplex mode, each port delivers 200 Mbps of network speed. Easy to set up and use, these 500-series switches are ideal for speedily delivering large amounts of multimedia, image, and video information.

PACKAGE CONTENTS

- Switch unit
- Power cord
- Rack-mount kit
- User guide
- Warranty card
- Support card

Highlight

• ACCESSIBLE

Switched 10/100 Mbps ports provide private 10 or 100 Mbps bandwidth for PCs, servers, or hubs—no need to share and compete with other users for bandwidth.

• EFFECTIVE

Each port supports up to 200 Mbps of throughput.

• INTUITIVE

These switches begin operating as soon as they are powered on. Every port automatically senses the proper speed and full/half duplex mode, taking the burden of configuration off the user.

• EXPLICIT

LEDs are integrated with the network ports which simplifies installation and makes network monitoring very easy.

• CONVENIENT

Built into sturdy, 13-inch metal cases, these units can be mounted in a standard 19-inch rack.

TECHNICAL SPECIFICATIONS

Network Ports

- 24 10 or 100 Mbps
- RJ-45 ports

Performance (64-byte packets)

- Store-and-forward packet switching
- Forward rate (10 Mbps)
- 14,800 packet per sec
- Forward rate (100 Mbps)
- 148,000 packet per sec.

- Latency (100 to 100 Mbps)
- 60 usec max
- <80μs

MAC addresses

- 4,000
- Queue buffer per port
- 64 KBytes
- Weight
- 2.6 kg (5.7 lb)

Dimensions

- W 330 mm (13")
- D 202 mm (8")
- H 43 mm (1.7")

AC Power

- 30W maximum
- Auto-sensing 100 to 240V, 50/60 Hz
- Localized plug for North America, Japan, the UK, Europe, and Australia

Standards Compliance

- IEEE 802.3i 10BASE-T Ethernet
- IEEE 802.3u 100BASE-TX Fast Ethernet
- Compatible with all major network software

Status LEDs

- **Unit:** power
- **Per network port:** 10 or 100 Mbps operations, Rx/Tx and collision, link, half/full duplex

Electromagnetic Emissions

- CE mark, commercial
- FCC Part 15 Class A
- EN 55 022 (CISPR 22), Class A
- VCCI Class A

Environmental Specifications

- **Operating temperature:** 0 to 40° C (32 to 104° F)
- **Operating humidity:** 80% max. relative humidity, non-condensing

Safety Agency Approvals

- UL listed (UL 1950)/CUL
- TUV licensed (EN 60 950)

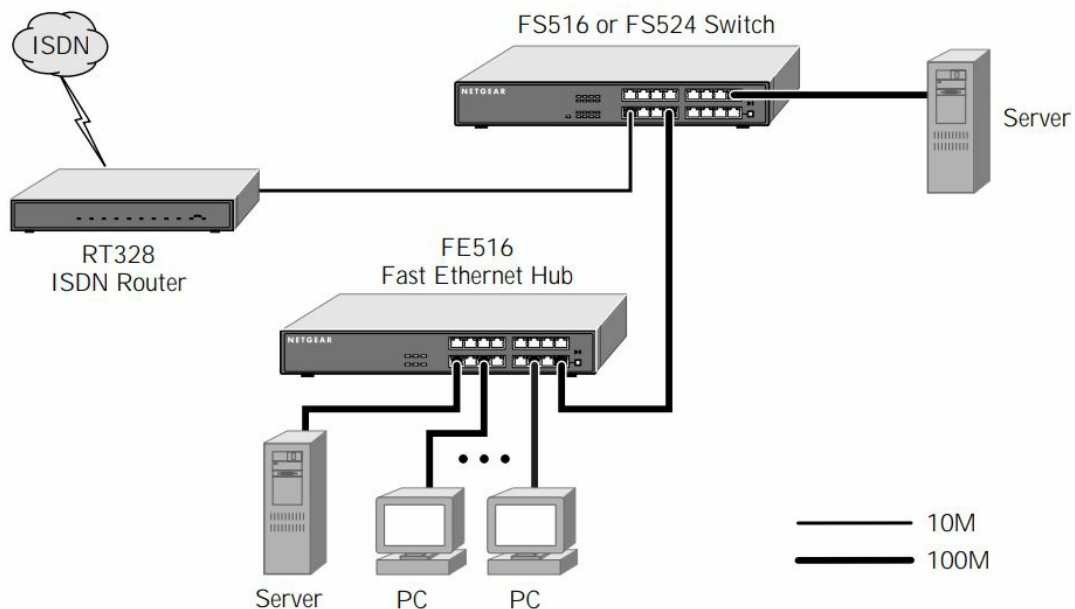
Warranty

- **Switch** – 5 years
- **Power supply** – 2 years

Support

- **Address:** 4500 Great America Parkway Santa Clara, CA 95054 USA
- **Phone:** 1-888-NETGEAR
- **E-mail:** info@NETGEAR.com
- **Website:** www.NETGEAR.com

Connection



In-Country Phone Support

(24×7 phone support in English, local language support during office hours.)

Trademarks

NETGEAR®, the Netgear logo, Everybody's connecting, The Gear Guy and Auto Uplink are trademarks or registered trademarks of Netgear, Inc. in the United States and/or other countries. Other brand and product names are trademarks or registered trademarks of their respective holders. Information is subject to change

without notice. All rights reserved. *Free basic installation support is provided for 90 days from the date of purchase; optional premium support is available.

Help

Help is there when you need it! NETGEAR provides free, 24x7 telephone and e-mail technical support in English, with selected local language support during office hours.

FAQ's

What is the maximum data transfer rate supported by the NETGEAR FS524 24 Port Rackmount Ethernet Switch?

The NETGEAR FS524 supports a maximum data transfer rate of 100 Mbps on each of its 24 ports.

Is the NETGEAR FS524 a managed switch?

No, the NETGEAR FS524 is an unmanaged switch, meaning it operates without any configuration or management interface.

Can the NETGEAR FS524 be rack-mounted?

Yes, the NETGEAR FS524 is designed to be rack-mounted, making it suitable for data centers and network cabinets.

What is the power input for the NETGEAR FS524 switch?

The NETGEAR FS524 switch requires an AC power input of 100-240V, 50/60Hz.

How does the NETGEAR FS524 handle auto-negotiation for network connections?

The switch supports auto-negotiation on all ports, allowing it to automatically determine the optimal speed and duplex settings for connected devices.

Can I use the NETGEAR FS524 for PoE (Power over Ethernet) devices?

No, the NETGEAR FS524 does not support PoE. It is a standard Ethernet switch without Power over Ethernet capabilities.

What are the dimensions of the NETGEAR FS524?

The NETGEAR FS524 has dimensions of approximately 17.32 x 8.15 x 1.73 inches (440 x 207 x 44 mm).

How can I connect the NETGEAR FS524 to my network?

Simply connect an Ethernet cable from your network router or modem to any of the 24 Ethernet ports on the NETGEAR FS524.

Can I use the NETGEAR FS524 in a fanless setup?

Yes, the NETGEAR FS524 is fanless, which means it operates silently and does not require additional cooling.

Does the NETGEAR FS524 support VLANs (Virtual LANs)?

No, the NETGEAR FS524 is an unmanaged switch and does not have VLAN support. It operates as a single broadcast domain.

What is the MTBF (Mean Time Between Failures) of the NETGEAR FS524?

The MTBF of the NETGEAR FS524 is approximately 426,000 hours.

Can I mount the NETGEAR FS524 on both sides of the rack?

Yes, the switch includes mounting brackets that allow you to mount it on both sides of the rack, providing flexibility in installation.

References: [NETGEAR FS524 Rackmount Ethernet Switch – Device report](#)