

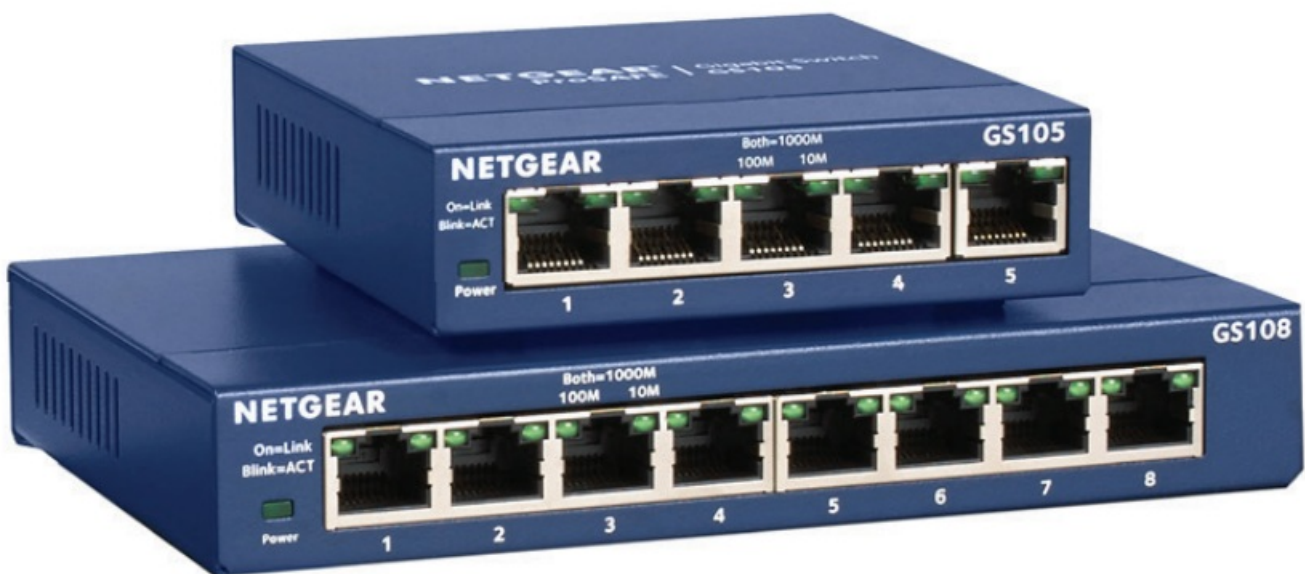


NETGEAR GS105v5 and GS108v4 5 Port and 8 Port Gigabit Ethernet Unmanaged Switch Installation Guide

[Home](#) » [NETGEAR](#) » NETGEAR GS105v5 and GS108v4 5 Port and 8 Port Gigabit Ethernet Unmanaged Switch Installation Guide 

NETGEAR®

GS105v5 and GS108v4 5 Port and 8 Port Gigabit Ethernet Unmanaged Switch
Installation Guide



Contents

- [1 Package contents](#)
- [2 Register with the NETGEAR Insight app](#)
- [3 Connect the switch](#)
- [4 Check the LEDs](#)
- [5 Wall-mount the switch](#)
- [6 Technical specifications](#)
- [7 Support](#)
- [8 Instant Connectivity with Reliable Performance](#)
- [9 Highlights](#)
- [10 Hardware at a Glance](#)
- [11 Example Application](#)
- [12 Documents / Resources](#)
 - [12.1 References](#)
- [13 Related Posts](#)

Package contents

- Gigabit Ethernet switch
- Power adapter (varies by region)
- Wall-mount kit
- Installation guide



Register with the NETGEAR Insight app

1. Search for NETGEAR Insight and download the latest app.

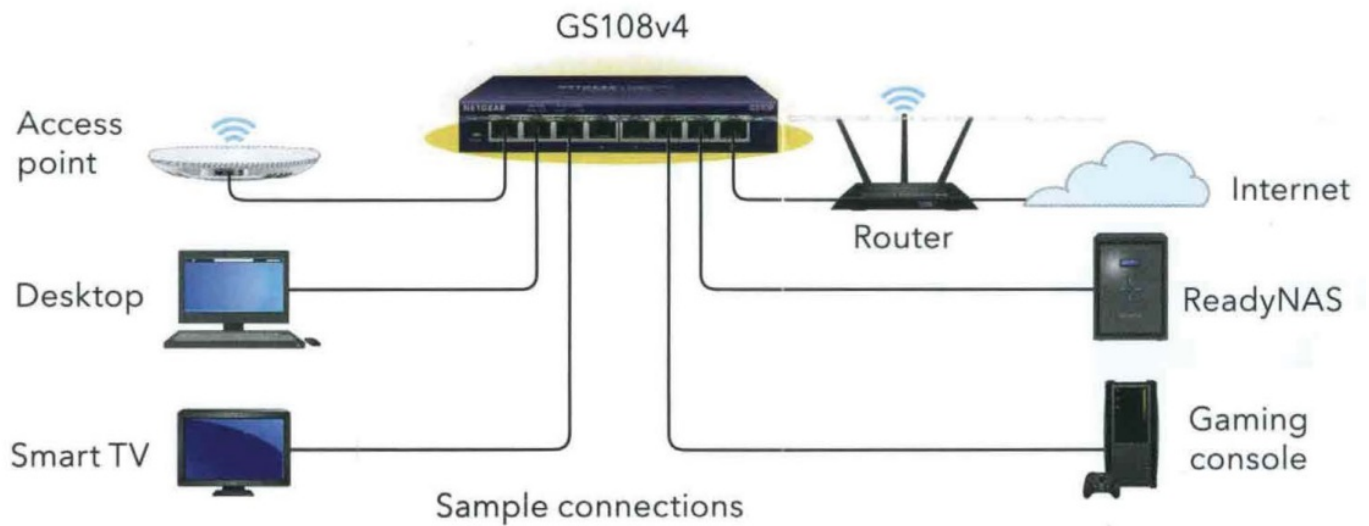


2. Set up a NETGEAR account if you do not have one.
3. Tap the menu in the upper-left corner.
4. Tap REGISTER ANY NETGEAR DEVICE.
5. Enter the serial number located on the bottom of the switch, or use the camera on your mobile device to scan the serial number bar code.
6. Tap GO.

The switch is registered and added to your account. You can now view the switch in the NETGEAR Insight app.

Note: Because this is an unmanaged switch, you cannot configure or manage it in NETGEAR Insight.

Connect the switch



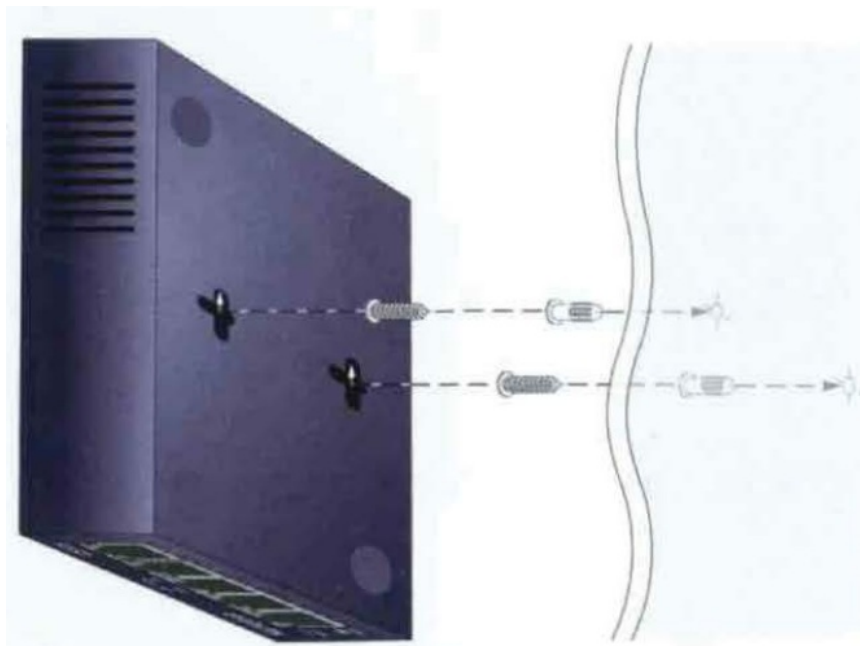
Check the LEDs

LED	Description
Power	<ul style="list-style-type: none"> On. The switch is receiving power. Off. The switch is not receiving power.
Port (left and right)	<ul style="list-style-type: none"> Both LEDs are solid green. 1000 Mbps link on this port. Left LED is solid green. 100 Mbps link on this port. Right LED is solid green. 10 Mbps link on this port. Blinking green. The port is sending or receiving traffic. Off. The switch does not detect a link on this port.

Wall-mount the switch

The bottom panel of the switch includes two mount holes. The center-to-center distance between the holes is:

- GS1 OSvS: 1.8 in (46 mm)
- GS 108v4: 3.15 in (80 mm)



Note: You can mount the switch with the Ethernet ports facing down (at the bottom) as shown, or with the Ethernet ports facing up.

1. Mark the wall where you want to drill the holes.
2. Insert the provided anchors into the wall.
3. Install the provided screws with a No. 2 Phillips screwdriver.
Leave about 1/4 an inch (6 mm) of each screw protruding from the wall.
4. Align the holes on the bottom panel of the switch with the screws and mount the switch.

Technical specifications

Specifications	Description
Network interface	RJ-45 connector for 1 0BASE-T, 1 00BASE-TX, or 1 000BASE-T
Ports	GS105v5: 5 GS108v4: 8
Power adapter	12V@ 0.5A DC input
Power consumption	GS 105v5: 2.7W max. GS108v4: 4.92W max.
Weight	GS 105v5: 0.56 lb (0.254 kg) GS 108v4: 1.11 lb (0.5 kg)
Dimensions (W x D x H)	GS105v5: 3.97 x 3.7 x 1.02 in. (100.8 x 94 x 25.9 mm) GS108v4: 6.2x4x 1.1 in.(158x 102x27 mm)
Operating temperature	32-122° F (0-50° C)
Operating humidity	10%- 90% relative humidity, non-condensing

Support

Thank you for purchasing this NETGEAR product. You can visit <https://www.netgear.com/support/> to register your product, get help, access the latest downloads and user manuals, and join our community. We recommend that you use only official NETGEAR support resources.

Si ce produit est vendu au Canada, vous pouvez accéder à ce document en français canadien à <https://www.netgear.com/support/download/>. (If this product is sold in Canada, you can access this document in Canadian French at <https://www.netgear.com/support/download/>.)

For regulatory compliance information including the EU Declaration of Conformity, visit <https://www.netgear.com/about/regulatory/>.

See the regulatory compliance document before connecting the power supply.

Do not use this device outdoors. If you connect cables or devices that are outdoors to this device, see <https://kb.netgear.com/000057103> for safety and warranty information.



Floor 1, Building 3,
University Technology Centre Curraheen Road, Cork, T12EF21, Ireland

© NETGEAR, Inc., NETGEAR and the NETGEAR

Logos are trademarks of NETGEAR, Inc. Any non-NETGEAR trademarks are used for reference purposes only.

NETGEAR, Inc.
350 East Plumeria Drive
San Jose, CA 95134, USA



* In US & Europe Market Share
according to NPD and Context, January 2019



Instant Connectivity with Reliable Performance

The NETGEAR® Gigabit Unmanaged Switch series helps businesses cost-effectively expand their network to Gigabit speeds and higher port counts.

The GS105 and GS108 Gigabit Ethernet switches come with 5 and 8 Gigabit copper ports in a desktop metal case and are wall-mountable. These switches are energy efficient, built to last, and rigorously tested to provide the reliability businesses need. 802.1p traffic prioritization and jumbo frame support allow for seamless integration with more sophisticated networks.

Highlights

Plug and Play

- The standards-based Gigabit switches to sense and adjust for network speed and cabling type automatically. Easily integrate into your existing Ethernet network – no matter if it is running at 10/100Mbps or Gigabit speed
- Simple setup with no software or configuration needed
- Front panel LEDs keep you informed of power status, link speed, and link activities

Traffic Prioritization

- Prioritize mission-critical applications such as voice and video Support IEEE 802.1p and DSCP-based QoS for delivering data based on priority and type

High Quality and Reliable Performance

- Superior network performance at a non-blocking rate delivers true Gigabit speed with no compromise
- Durable metal case and long product life (shown by MTBF numbers)

Energy Efficient

- GS105 and GS108 support the latest Energy Efficient Ethernet (IEEE 802.3az) standard, which reduces energy consumption when there is light traffic on an active port or when there is no link or no activity detected. It can further save energy when a short cable (<100m) is used. Energy savings lead directly to cost savings in operation.

Limited Lifetime* Warranty

- Industry's leading limited lifetime* warranty, not only on hardware but also includes lifetime online support as well as next-business-day (NBD) replacement support, providing customers peace of mind using NETGEAR switches in their network.

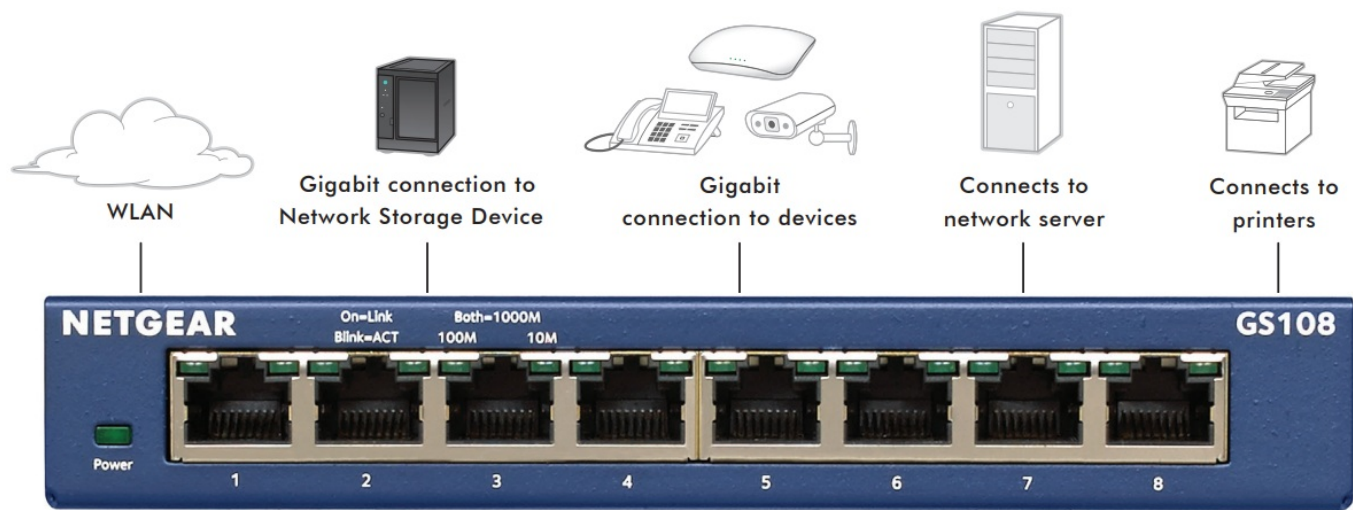


Hardware at a Glance

		FRONT	REAR
Model Name	Form-Factor	10/100/1000 Base-T RJ45 ports	Power Supply
GS105	Desktop, Wall mount	5	External Power Adapter, 12V/0.5A
GS108	Desktop, Wall mount	8	External Power Adapter, 12V/0.5A

Example Application

SOHO Network Application



Why the NETGEAR Gigabit Ethernet Switch is ideal for SOHO Networks

- Superior Performance
- High Quality and Reliability
- Prioritize voice and video traffic

Environmental Specifications	GS105v5	GS108v4
Storage		
Storage Temperature	– 4° to 158°F (–20° to 70°C)	
Humidity	95% maximum relative humidity, non-condensing	
Altitude	10,000 ft (3,000 m) maximum	
Electromagnetic Emissions and Immunity		
Certifications Class	B (CE mark, FCC Part 15, ICES-003, VCCI, RCM)	B (CE mark, FCC Part 15, ICES-003, VCCI, RCM)
Safety		
Certifications	CB	CE LVD
	EN 60950-1	EN 60950-1

Warranty and Support*	
Hardware Warranty	Limited lifetime* on switch and 2-year on the power adapter
Live Chat Support	Limited lifetime*
Next Business Day Replacement	Limited lifetime*
Package Content	
All models	Gigabit Ethernet Switch Power adapter Wall mount kit and rubber feet Installation Guide
Ordering Information	
GS105NA	North America and Latin America
GS105GE	Europe
GS105AU	Australia
GS105UK	United Kingdom
GS105-500JPS	Japan
GS108-400NAS	North America and Latin America
GS108GE	Europe
GS108AU	Australia
GS108UK	United Kingdom
GS108-400JPS	Japan

* This product comes with a limited warranty that is valid only if purchased from a NETGEAR authorized reseller and covers unmodified hardware, fans, and internal power supplies – not software or external power supplies, and requires product registration at <https://www.netgear.com/business/registration> within 90 days of purchase; see <https://www.netgear.com/about/warranty> for details. Intended for indoor use only.

† NETGEAR #1 in US Market Share according to NPD data for Unmanaged and Smart Switches, January 2019. NETGEAR #1 in Europe Market Share according to Context data for Unmanaged and Smart Switches, January 2019.

NETGEAR, the NETGEAR Logo, and NETGEAR Insight are trademarks of NETGEAR, Inc. in the United States and/or other countries. Other brand names mentioned herein are for identification purposes only and may be trademarks of their respective holder(s).

NETGEAR, Inc. 350 E. Plumeria Drive, San Jose, CA 95134-1911 USA, 1-888-NETGEAR (638-4327), E-mail: info@NETGEAR.com, www.NETGEAR.com

NETGEAR®

Documents / Resources



NETGEAR GS105v5 and GS108v4 5 Port and 8 Port Gigabit Ethernet Unmanaged Switch

[pdf] Installation Guide

GS105v5 and GS108v4 5 Port and 8 Port Gigabit Ethernet Unmanaged Switch, GS105v5, GS108v4, 5 Port and 8 Port Gigabit Ethernet Unmanaged Switch, 5 Port Gigabit Ethernet Unmanaged Switch, 8 Port Gigabit Ethernet Unmanaged Switch, Gigabit Ethernet Unmanaged Switch, Ethernet Unmanaged Switch, Unmanaged Switch, Ethernet Switch, Gigabit Switch, Switch

References

- [N Error | NETGEAR](#)
- [N NETGEAR: Advanced WiFi & Networking](#)
- [N NETGEAR: Advanced WiFi & Networking](#)
- [N NETGEAR Product Registration FAQ | Answer | NETGEAR Support](#)

Manuals+,