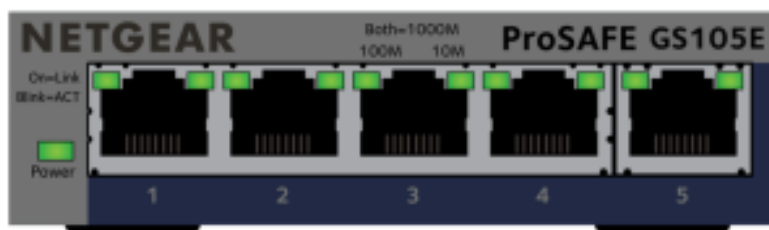


NETGEAR GS105Ev2 5-Port Gigabit Ethernet Smart Managed Plus Switch Installation Guide

[Home](#) » [NETGEAR](#) » NETGEAR GS105Ev2 5-Port Gigabit Ethernet Smart Managed Plus Switch Installation Guide 

NETGEAR GS105Ev2 5-Port Gigabit Ethernet Smart Managed Plus Switch



Contents

- [1 Register your switch](#)
- [2 Connect the switch](#)
- [3 Discover your switch's IP address](#)
- [4 Support and community](#)
- [5 Regulatory and legal](#)
- [6 Documents / Resources](#)
 - [6.1 References](#)
- [7 Related Posts](#)

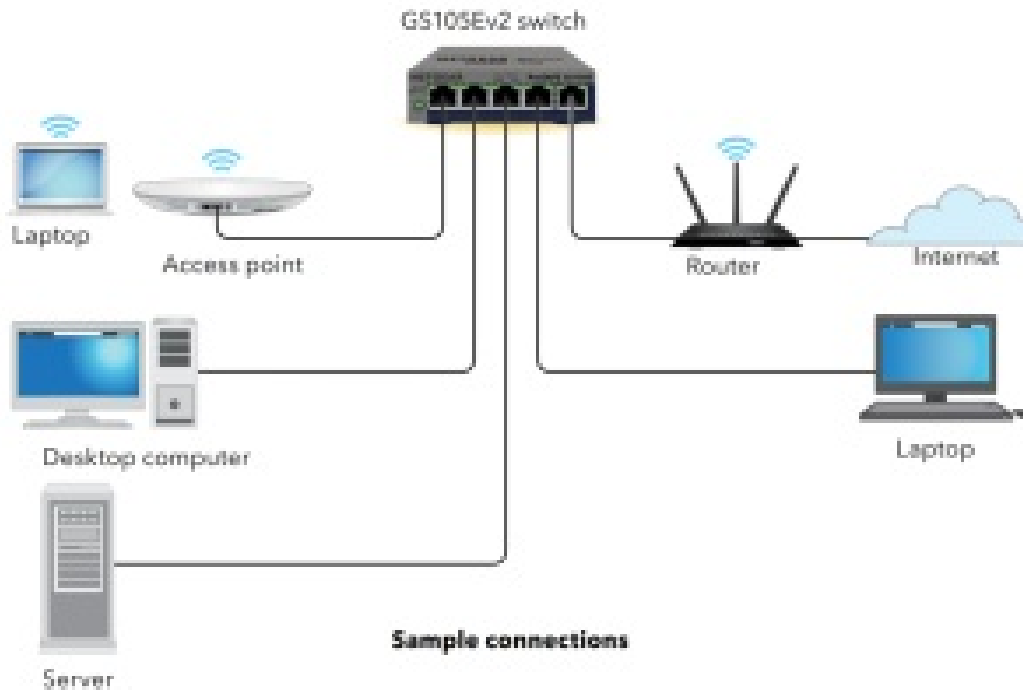
Register your switch

1. From a computer or mobile device that is connected to the Internet, visit my.netgear.com
2. Log in to your NETGEAR account. If you do not have a free NETGEAR account, you can create one.
The My Products page displays.
3. From the menu on the left, select **Register a Product**.
4. In the **Serial Number** field, type the serial number of your device.

The serial number is 13 digits long. It is printed on the switch label.

5. From the **Date of Purchase** menu, select the date when you purchased the device.
6. Click the **REGISTER** button. The switch is registered with NETGEAR. A confirmation email is sent to your NETGEAR account email address.

Connect the switch



This switch is designed for indoor use only. If you want to connect it to a device located outdoors, the outdoor device must be properly grounded and surge protected, and you must install an Ethernet surge protector inline between the switch and the outdoor device. Failure to do so can damage the switch.

WARNING: Before connecting the GS105Ev2 device to outdoor cables or devices, see <https://kb.netgear.com/000057103> for safety and warranty information.

Discover your switch's IP address

The NETGEAR Switch Discovery Tool (NSDT) lets you discover the switch in your network and access the local browser interface of the switch from a Mac or a Windows-based computer.

To install the NSDT, discover the switch in your network, access the switch, and discover the switch IP address:

1. To download the tool, visit <https://www.netgear.com/support/product/netgear-switch-discovery-tool.aspx>. Depending on the computer that you are using, download either the Mac or Windows version.
2. Temporarily disable the firewall, Internet security, antivirus programs, or all of these on the computer that you use to configure the switch
3. Unzip the NSDT files, and click or double-click the Setup.exe file (for example, NetgearSDT-V1.1.115_Win_x64_Setup.exe) to install the program on your computer. You might see the tool icon appear on your Mac dock or Windows desktop.
4. Reenable the security services on your computer.
5. Power on the switch
6. Connect your computer to the same network as the switch.
7. Open the NSDT.

The initial page displays a menu and a button.

8. From the **Choose a connection** menu, select a network for this switch.
9. Click the **Start Searching** button.

The NSDT displays the IP addresses of the switches that it discovers.

10. Click the **ADMIN PAGE** button. The login page or login window of the local browser user interface opens.
11. Enter the default password that is printed on the label of the device.
12. If prompted, enter a new admin password for the switch. The Switch Information page displays, and shows the IP address assigned to the switch.
13. Save the password and IP address for future use. For more information, see the user manual, which you can download by visiting netgear.com/support/download/.

Support and community

Visit netgear.com/support to get your questions answered and access the latest downloads. You can also check out our NETGEAR Community for helpful advice at community.netgear.com.

Regulatory and legal

(If this product is sold in Canada, you can access this document in Canadian French at <https://www.netgear.com/support/download/>.)

For regulatory compliance information including the EU Declaration of Conformity, visit <https://www.netgear.com/about/regulatory/>.

See the regulatory compliance document before connecting the power supply. For NETGEAR's Privacy Policy, visit <https://www.netgear.com/about/privacy-policy>.

By using this device, you are agreeing to NETGEAR's terms and conditions at <https://www.netgear.com/about/terms-and-conditions>. If you do not agree, return the device to your place of purchase within your return period.

NETGEAR, Inc.


350 East Plumeria Drive San Jose, CA 95134, USA

NETGEAR INTERNATIONAL LTD

Floor 1, Building 3 University Technology Centre Curraheen Road, Cork, T12K516, Ireland

NETGEAR®
B U S I N E S S

Documents / Resources

	NETGEAR GS105Ev2 5-Port Gigabit Ethernet Smart Managed Plus Switch [pdf] Installation Guide 5-Port Gigabit Ethernet Smart Managed Plus Switch, GS105Ev2
---	--

References

- [!\[\]\(a22ba4e13c745edbf29e51af246c4c12_img.jpg\) English - NETGEAR Communities](#)
- [!\[\]\(33b18af9a4b997eb52666cfeb3c44157_img.jpg\) NETGEAR - Common Account Management](#)
- [!\[\]\(262b158440b847a82f89a14cab8644ec_img.jpg\) NETGEAR Support | NETGEAR](#)
- [!\[\]\(f51929fecf7b0dc947ac13f4c4835e8f_img.jpg\) Do I need to use a surge protector with my NETGEAR Business device? | Answer | NETGEAR Support](#)
- [!\[\]\(dfbf0e54bcca114319aa65c906feb8d0_img.jpg\) NETGEAR Privacy Policy | NETGEAR](#)
- [!\[\]\(64792950f1b7ee883a860b5f0af110c3_img.jpg\) Regulatory | NETGEAR](#)
- [!\[\]\(a4c91228d412dab12bd635819fc28c10_img.jpg\) NETGEAR Terms and Conditions | NETGEAR](#)
- [!\[\]\(c6956848df6ff9e9b3dad161d5adefac_img.jpg\) Download Center | Downloads and Documentation | NETGEAR](#)
- [!\[\]\(a8426952ff919f2600e76f3323526877_img.jpg\) Error | NETGEAR](#)

Manuals+.