



# NETGEAR AV Adding Devices On Engage Controller User Guide

[Home](#) » [NETGEAR AV](#) » NETGEAR AV Adding Devices On Engage Controller User Guide 

## Contents

- [1 NETGEAR AV Adding Devices On Engage Controller](#)
- [2 Product Information](#)
- [3 Product Usage Instructions](#)
- [4 ADDING DEVICES ON ENGAGE CONTROLLER](#)
- [5 APPLICATION](#)
- [6 HOW TO CONNECTING WIRES](#)
- [7 Documents / Resources](#)
- [8 Related Posts](#)

# NETGEAR®

## NETGEAR AV Adding Devices On Engage Controller



## Product Information

The product being referred to in the user manual is called the Engage Controller. It is a device used for

onboarding and managing network devices. The controller allows users to add switches to the network and configure them for optimal performance. It also provides firmware updates for switches that are not on the latest version. The Engage controller can be accessed through a computer and offers features like password configuration and device discovery.

## **Product Usage Instructions**

To add devices to the Engage controller, follow these steps:

1. **Connect the switch to the network:** Ensure that the switch is connected to a router acting as the DHCP server. Also, make sure that a computer running the Engage controller is connected to the network.
2. **Open the Engage Controller:** Launch the Engage controller on your computer and navigate to the Devices tab.
3. **Discover and onboard the switch:** Connect the new switch to the network and wait for it to boot up. Once the switch is powered up and connected, it will appear under “Discovered Devices” in the Engage controller. Click on “Onboard” to add the switch.
4. **Enter password (if applicable):** If you have already set a password for the switch, enter it in the provided field and click “Apply”.
5. **Use device default password:** If you are using a switch with no configuration, toggle the “Use device default password” option.
6. **Apply changes:** Click on “Apply” to save the settings.
7. **Verify successful addition:** You will see that the switch has been successfully added to the Engage controller.
8. **Firmware update (if required):** If the switch is not on the latest firmware version, the Engage controller will update the firmware automatically. The update process will cause the device to reboot as the new firmware is applied. If you encounter any issues during the device addition, you can manually update the firmware of the device before adding it to the Engage controller.

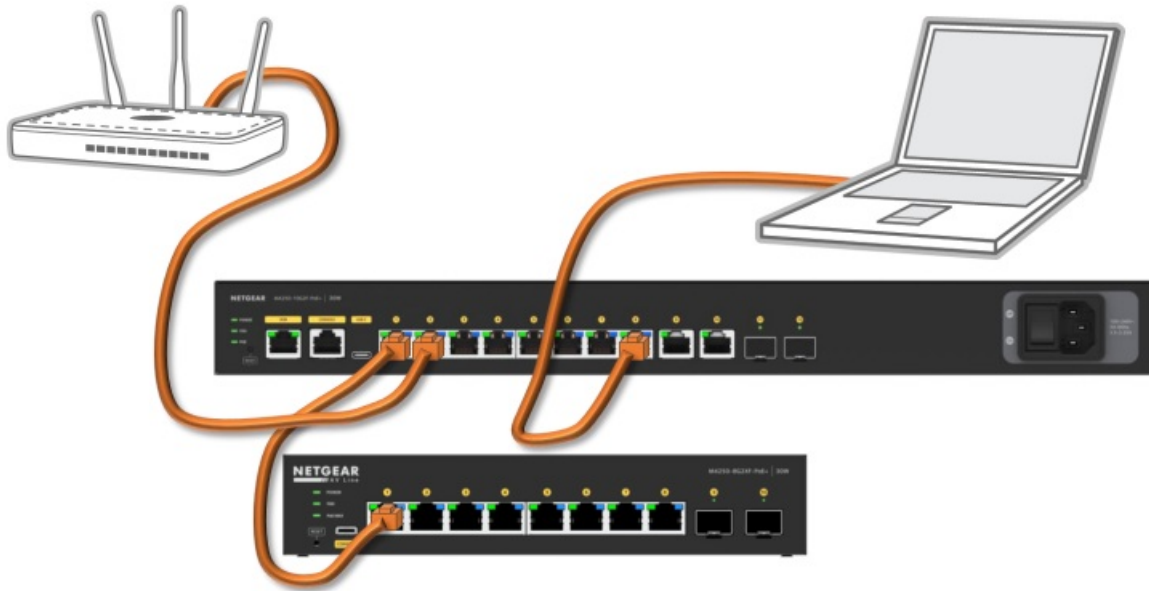
To add a device using the IP address, follow these additional steps:

1. Click on “Add Device” in the Engage controller.
2. Enter the IP address of the switch in the provided field.
3. Enter a password (if applicable): If a password has been set for the switch, enter it in the appropriate field and click “Apply”.
4. **Use device default password:** Toggle the “Use device default password” option if you are using a switch with no configuration.
5. **Apply changes:** Click on “Apply” to save the settings.
6. **Verify successful addition:** You will see that the switch has been added to the Engage controller.
7. **Check topology:** Click on “Topology” to view the network topology, which will now include the switches that were added. By following these instructions, you can successfully add and manage devices on the Engage controller.

## **ADDING DEVICES ON ENGAGE CONTROLLER**

This article will go over how to add devices to the Engage controller.

For this setup we will have the switch connected to a router that will be our DHCP server, a computer running the Engage controller, and we will be adding a second switch.



## APPLICATION

NETGEAR Engage

**NETGEAR ENGAGE**

Open the "Engage" controller and go to the "Devices" tab.

Question/Help admin

Devices Topology Site Settings Support Controller Management

Site HQ Save

Managed Devices [Add Device](#)

Switch Model	System Name	Serial Number	IP Address	FW Version	AV Version	Status
M4250-8G2XF-PoE+ GSM4210PX		6YX32A5NA0109	192.168.77.106	13.0.4.13	2.2.3.16	Online <a href="#">Configure</a>

Total 1 10/page < 1 > Go to 1

Discovered Devices

Switch Model	System Name	Serial Number	MAC Address	IP Address	FW Version	AV Version
You do not have any discovered devices						

Total 0 10/page < 1 > Go to 1

Connect the new switch to the network and wait for it to boot up.

© 1996 - 2023 NETGEAR®

NETGEAR Engage

Question/Help admin

Devices Topology Site Settings Support Controller Management

Site HQ Save

### Managed Devices

[Add Device](#)

Switch Model	System Name	Serial Number	IP Address	FW Version	AV Version	Status
M4250-8G2XF-PoE+ GSM4210PX		6YX32A5NA0109	192.168.77.106	13.0.4.13	2.2.3.16	Online <a href="#">Configure</a>

Total 1 10/page < 1 > Go to 1

### Discovered Devices

Switch Model	System Name	Serial Number	MAC Address	IP Address	FW Version	AV Version
M4250-8G2XF-PoE+ GSM4210PX	M4250-8G2XF-PoE+-7D5...	6YX32A5FA00F7	94:18:65:7D:5D:28	192.168.77.103	13.0.4.13	2.2.3.16 <a href="#">Onboard</a>

Total 1 10/page < 1 > Go to 1

Once the switch has booted up and is connected to the network you will see it under the "Discovered Devices." Click on "Onboard" to add the switch.

© 1996 - 2023 NETGEAR

NETGEAR Engage

Question/Help admin

Devices Topology Site Settings Support Controller Management

Site HQ Save

### Managed Devices

[Add Device](#)

Switch Model	System Name	Serial Number	MAC Address	IP Address	FW Version	AV Version
M4250-8G2XF-PoE+ GSM4210PX						

### Discovered Devices

Switch Model	System Name	Serial Number	MAC Address	IP Address	FW Version	AV Version
M4250-8G2XF-PoE+ GSM4210PX	M4250-8G2XF-PoE+-7D5...	6YX32A5FA00F7	94:18:65:7D:5D:28	192.168.77.103	13.0.4.13	2.2.3.16 <a href="#">Onboard</a>

Total 1 10/page < 1 > Go to 1

#### Onboard

Onboard devices to Engage. Note: Login into the switch to have the Engage manage the device. Once logged into the switch, the Engage will apply the site's password onto the device. Engage automatically upgrades device firmware for compatibility as needed.

Device Admin User: admin

Device Password:

Device IP Address: 192.168.77.103

☒ Use device default password

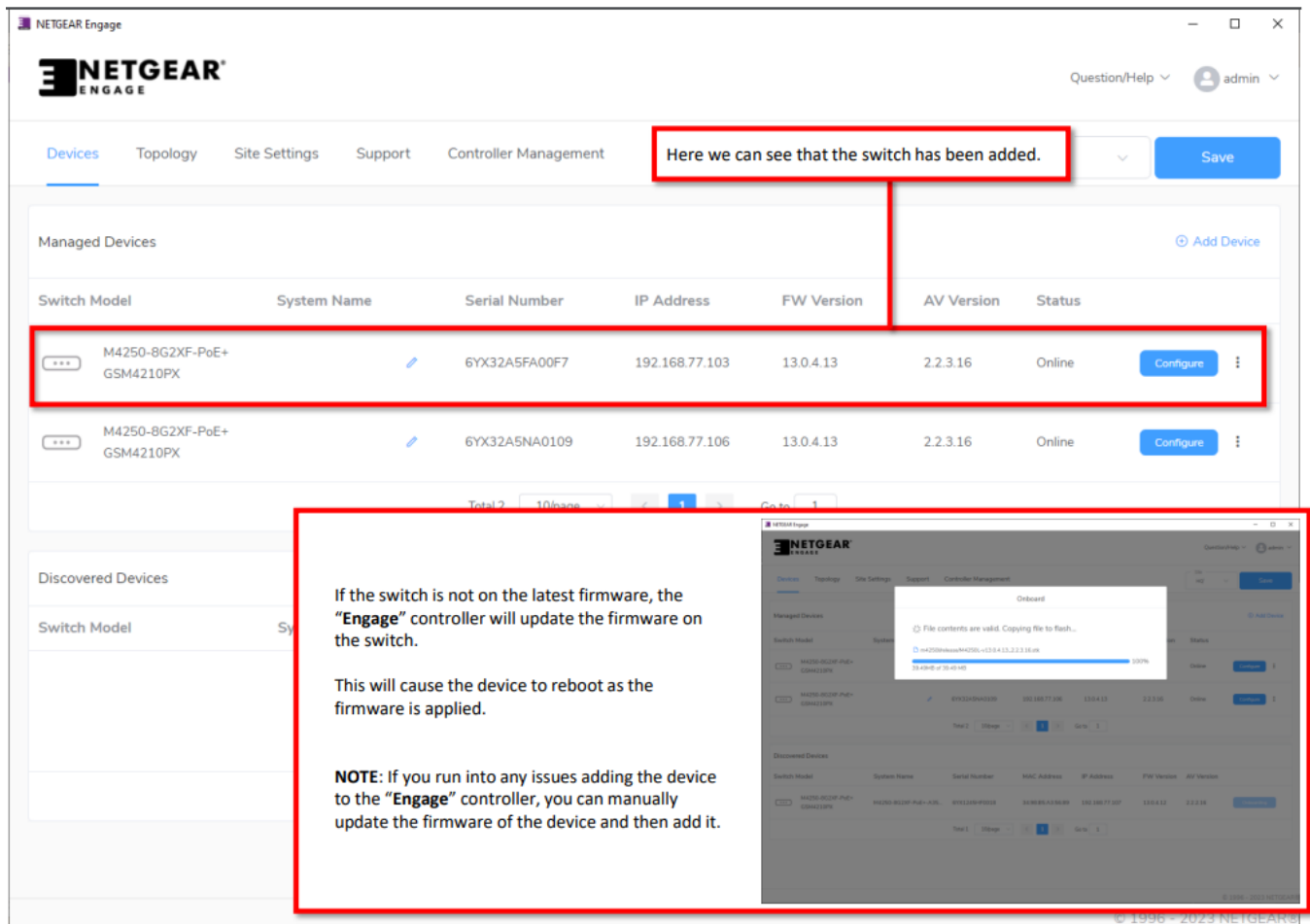
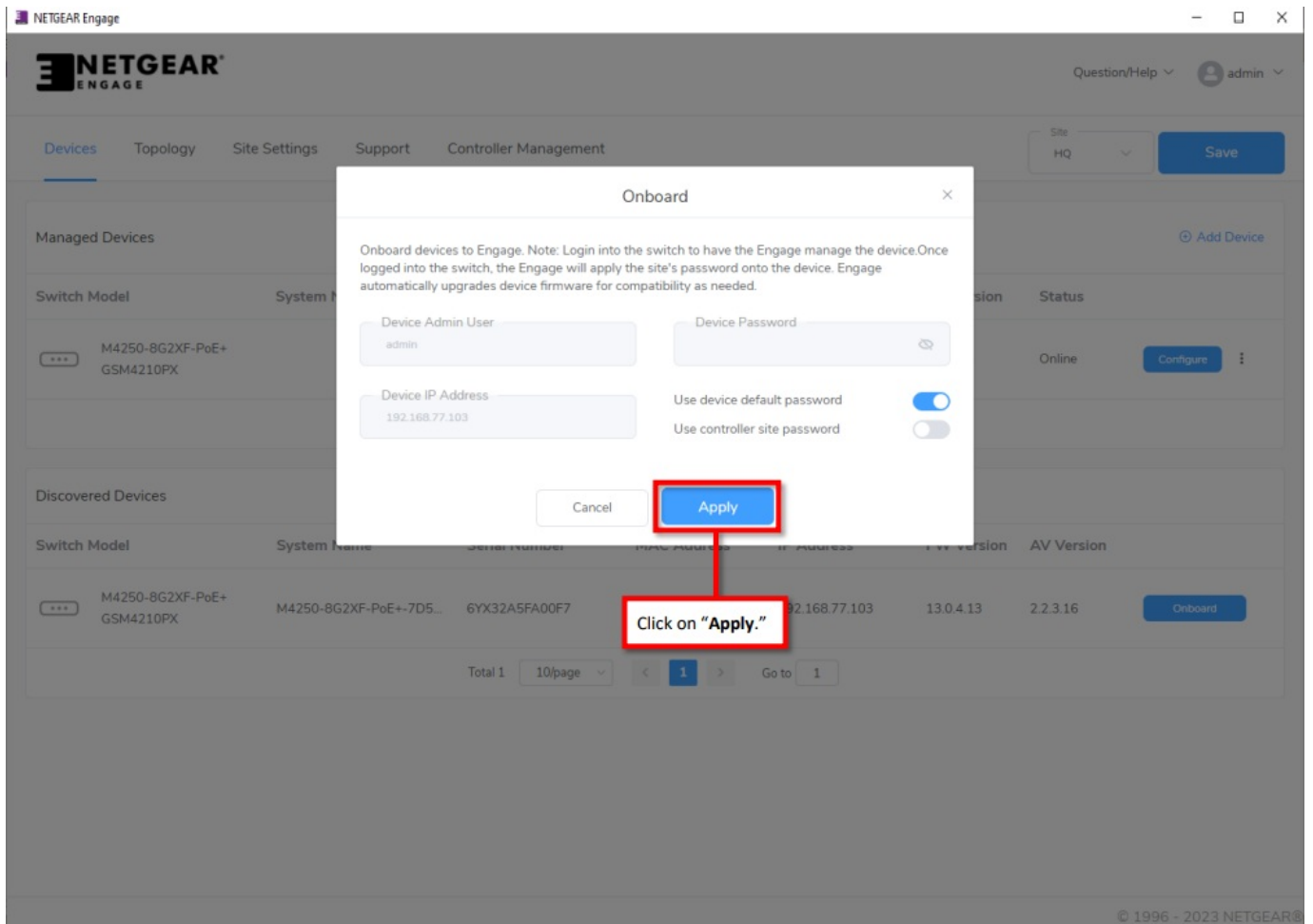
☐ Use controller site password

[Cancel](#) [Apply](#)

If you have already configured a password for the switch, enter it and click "Apply."

For this example, we are using a switch with no configuration.

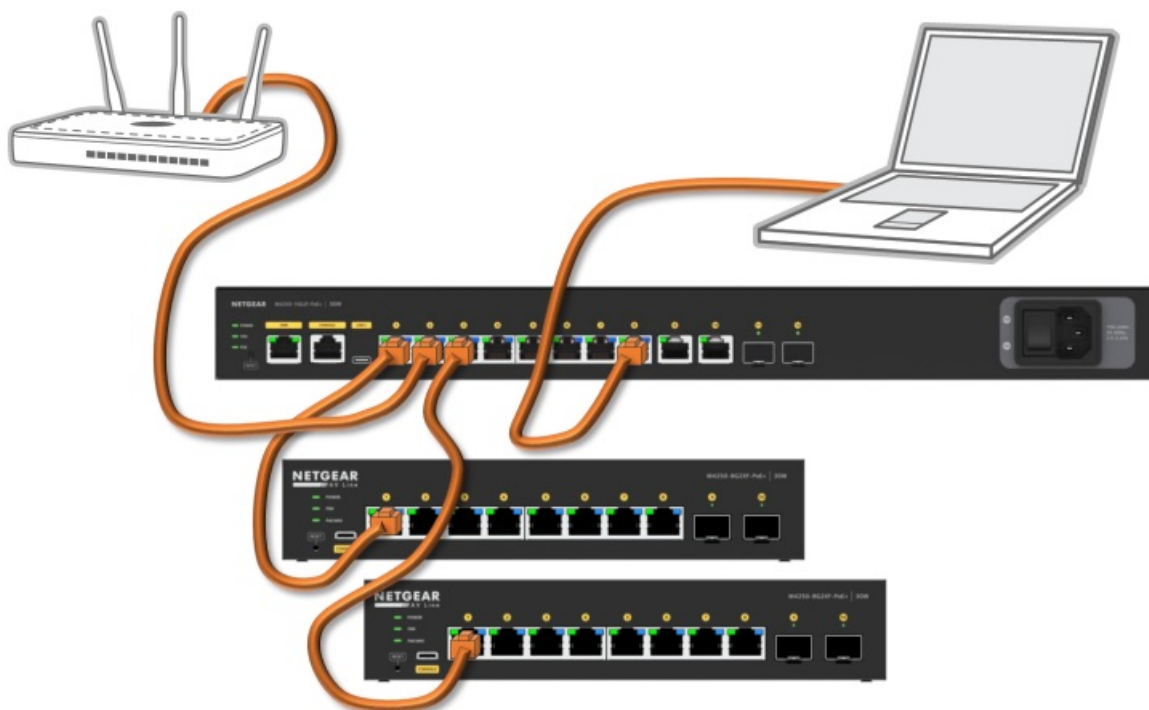
Toggle the "Use device default password."



## HOW TO CONNECTING WIRES

## ADDING DEVICES ON ENGAGE CONTROLLER VIA IP ADDRESS

We are going to add a third switch using the IP address of the switch.



NETGEAR Engage

Question/Help admin

Devices Topology Site Settings Support Controller Management

Site HQ Save

### Managed Devices

Click on "Add Device." [Add Device](#)

Switch Model	System Name	Serial Number	IP Address	FW Version	AV Version	Status
M4250-8G2XF-PoE+ GSM4210PX		6YX32A5FA00F7	192.168.77.103	13.0.4.13	2.2.3.16	Online <a href="#">Configure</a>
M4250-8G2XF-PoE+ GSM4210PX		6YX32A5NA0109	192.168.77.106	13.0.4.13	2.2.3.16	Online <a href="#">Configure</a>

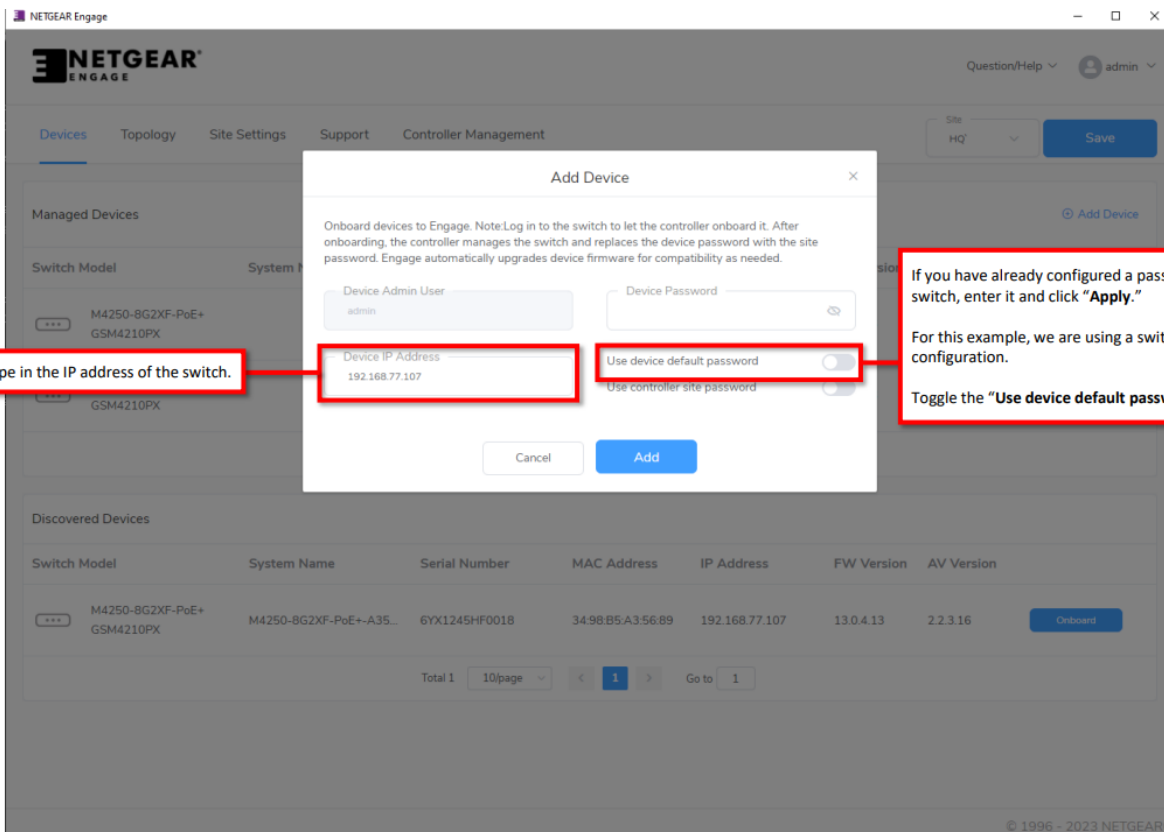
Total 2 10/page < 1 > Go to 1

### Discovered Devices

Switch Model	System Name	Serial Number	MAC Address	IP Address	FW Version	AV Version
M4250-8G2XF-PoE+ GSM4210PX	M4250-8G2XF-PoE+-A35...	6YX1245HF0018	34:98:B5:A3:56:89	192.168.77.107	13.0.4.13	2.2.3.16 <a href="#">Onboard</a>

Total 1 10/page < 1 > Go to 1

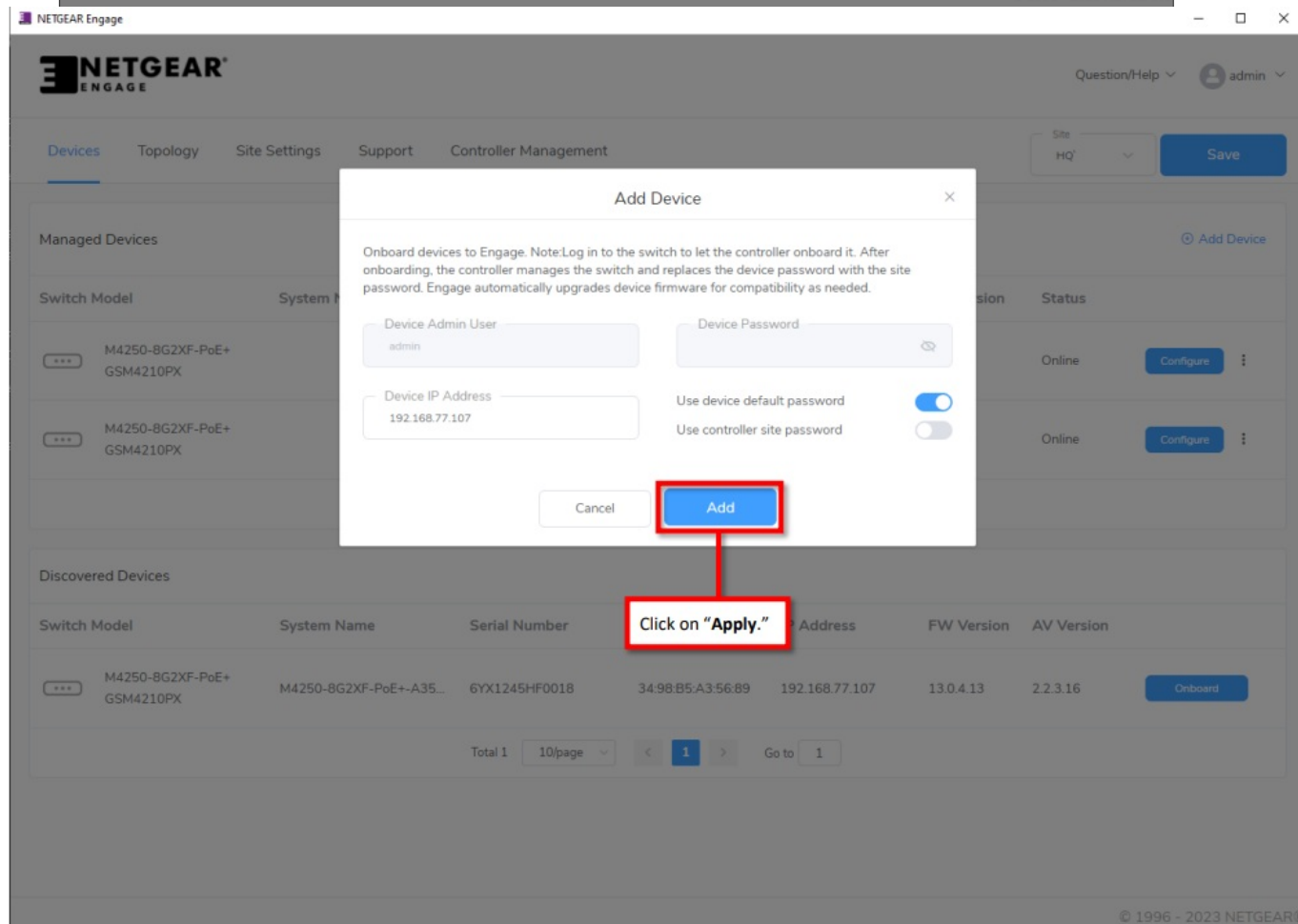
© 1996 - 2023 NETGEAR®



If you have already configured a password for the switch, enter it and click **"Apply."**

For this example, we are using a switch with no configuration.

Toggle the **"Use device default password."**



NETGEAR Engage

NETGEAR ENGAGE

Question/Help admin

DevicesTopologySite SettingsSupportController Management

Here we can see that the switch has been added.

Managed Devices

Add Device

Switch Model	System Name	Serial Number	IP Address	FW Version	AV Version	Status	
M4250-8G2XF-PoE+ GSM4210PX		6YX1245HF0018	192.168.77.107	13.0.4.13	2.2.3.16	Online	Configure
M4250-8G2XF-PoE+ GSM4210PX		6YX32A5FA00F7	192.168.77.103	13.0.4.13	2.2.3.16	Online	Configure
M4250-8G2XF-PoE+ GSM4210PX		6YX32A5NA0109	192.168.77.106	13.0.4.13	2.2.3.16	Online	Configure

Total 310/page1Go to 1

Discovered Devices

Switch Model	System Name	Serial Number	MAC Address	IP Address	FW Version	AV Version
--------------	-------------	---------------	-------------	------------	------------	------------

You do not have any discovered devices

Total 010/page1Go to 1

NETGEAR Engage

NETGEAR ENGAGE

Question/Help admin

DevicesTopologySite SettingsSupportController Management

Click on "Topology."

Managed Devices

Add Device

Switch Model	System Name	Serial Number	IP Address	FW Version	AV Version	Status	
M4250-8G2XF-PoE+ GSM4210PX		6YX1245HF0018	192.168.77.107	13.0.4.13	2.2.3.16	Online	Configure
M4250-8G2XF-PoE+ GSM4210PX		6YX32A5FA00F7	192.168.77.103	13.0.4.13	2.2.3.16	Online	Configure
M4250-8G2XF-PoE+ GSM4210PX		6YX32A5NA0109	192.168.77.106	13.0.4.13	2.2.3.16	Online	Configure

Total 310/page1Go to 1

Discovered Devices

Switch Model	System Name	Serial Number	MAC Address	IP Address	FW Version	AV Version
--------------	-------------	---------------	-------------	------------	------------	------------

You do not have any discovered devices

Total 010/page1Go to 1

NETGEAR Engage

NETGEAR ENGAGE

Question/Help admin

Devices Topology Site Settings Support Controller Management

Site HQ Save

Site Topology Site Neighbors Refresh

Here we can see that the topology has populated with the switches that we added.

6YX32A5NA0109 6YX32A5FA00F7 6YX1245HF0018

© 1996 - 2023 NETGEAR

## END SETUP



## Documents / Resources



[NETGEAR AV Adding Devices On Engage Controller](#) [pdf] User Guide  
Adding Devices On Engage Controller, Devices On Engage Controller, Engage Controller, Controller