

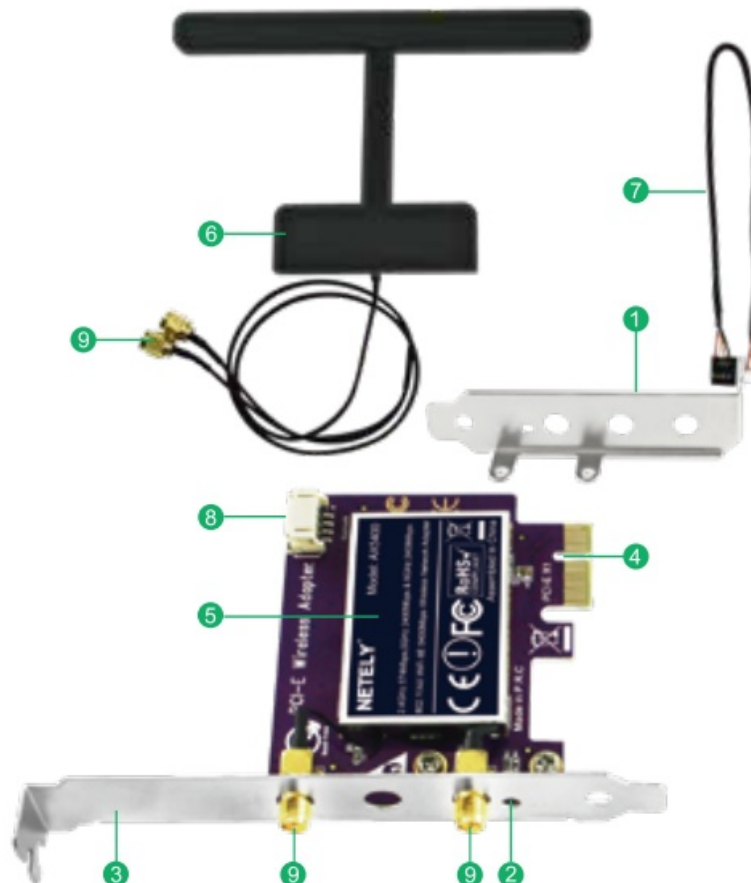


NETELY AX5400 5400Mbps PCIE WiFi Adapter for Windows User Manual

[Home](#) » [NETELY](#) » NETELY AX5400 5400Mbps PCIE WiFi Adapter for Windows User Manual 

NETELY[®]

AX5400 WiFi 6E 5400Mbps PCIE Wireless Network Adapter 2.4GHz 574Mbps,
5GHz 2400Mbps and 6GHz 2400Mbps



Contents

- [1 AX5400 5400Mbps PCIE WiFi Adapter for Windows](#)
- [2 WiFi 6E Network Card on Desktop PCs](#)
- [3 Description:](#)
- [4 Install WiFi Adapter Hardware on PCs:](#)
- [5 Connect to WiFi Stereo Device](#)
- [6 Connect to Internet](#)
- [7 Documents / Resources](#)
- [8 Related Posts](#)

AX5400 5400Mbps PCIE WiFi Adapter for Windows

- 1. Low profile bracket
- 2. Activity indicator
- 3. Full height bracket
- 4. PCIE X1 interface
- 5. Shield cover
- 6. Wi-Fi antenna kit
- 7. USB 2.0 cable
- 8. USB 2.0 connector
- 9. SMA connector

WiFi 6E Network Card on Desktop PCs



Internet Surfing



Live Streaming



Desktop PC



Gaming



Video Streaming

Description:

AX5400 is based on Intel WiFi 6E AX210NGW WiFi module. It supports latest 802.11AX WiFi 6E technology, provides tri-band WiFi connection for desktop computers on 2.4GHz 574Mbps 5GHz 2400Mbps and 6GHz 2400Mbps. It also comes with WiFi antenna adapter. It is a cost-effective way to add WiFi network and WiFi audio function on PCs/Servers for online gaming, 8K Ultra-HD video streaming and WiFi audio device data transmission.

Technical Specifications: WiFi module: Intel WiFi 6E AX210NGW Operation frequency: 5GHz, 2.4GHz, 6GHz Wireless standard: IEEE802.11AX WiFi 6E Wireless signal type: 802.11AX WiFi 6E 2X stream Working mode: Wi-Fi adapter (receiver) and wireless AP WiFi encryption: WEP,WPA/WPA2,WPA3,WPA-PSK/WPA2-PSK Max Wi-Fi speed: 2.4GHz 574Mbps, 5GHz 2400Mbps and 6GHz 2400Mbps

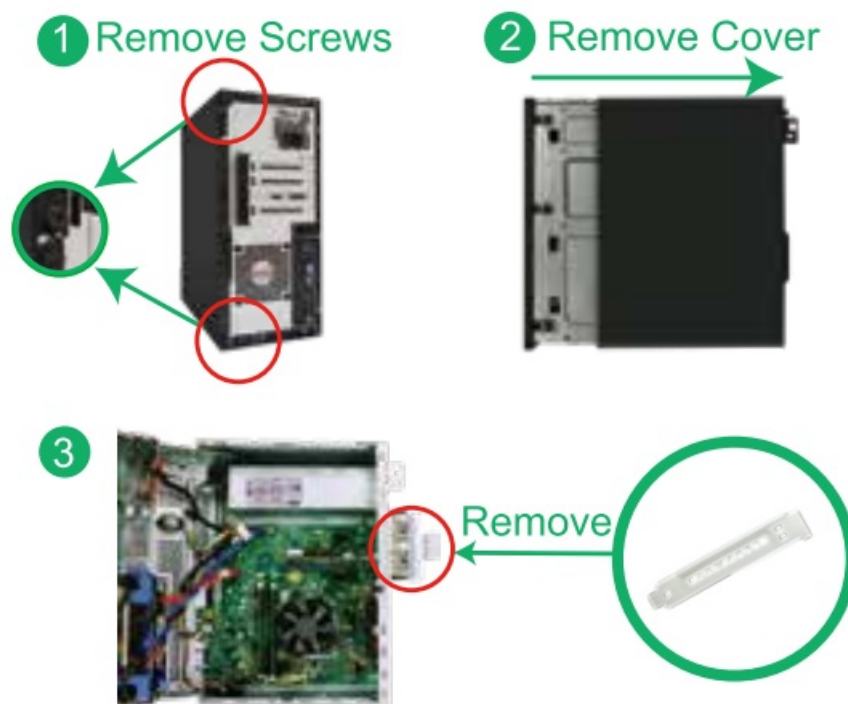
System Requirements:

1. Need to install WiFi network and WiFi stereo driver on Windows 10 64bit and Windows 11 64bit systems.
2. Need to compile on Linux Kernels 5.1+ systems.
3. NOT for other Windows and MAC systems.

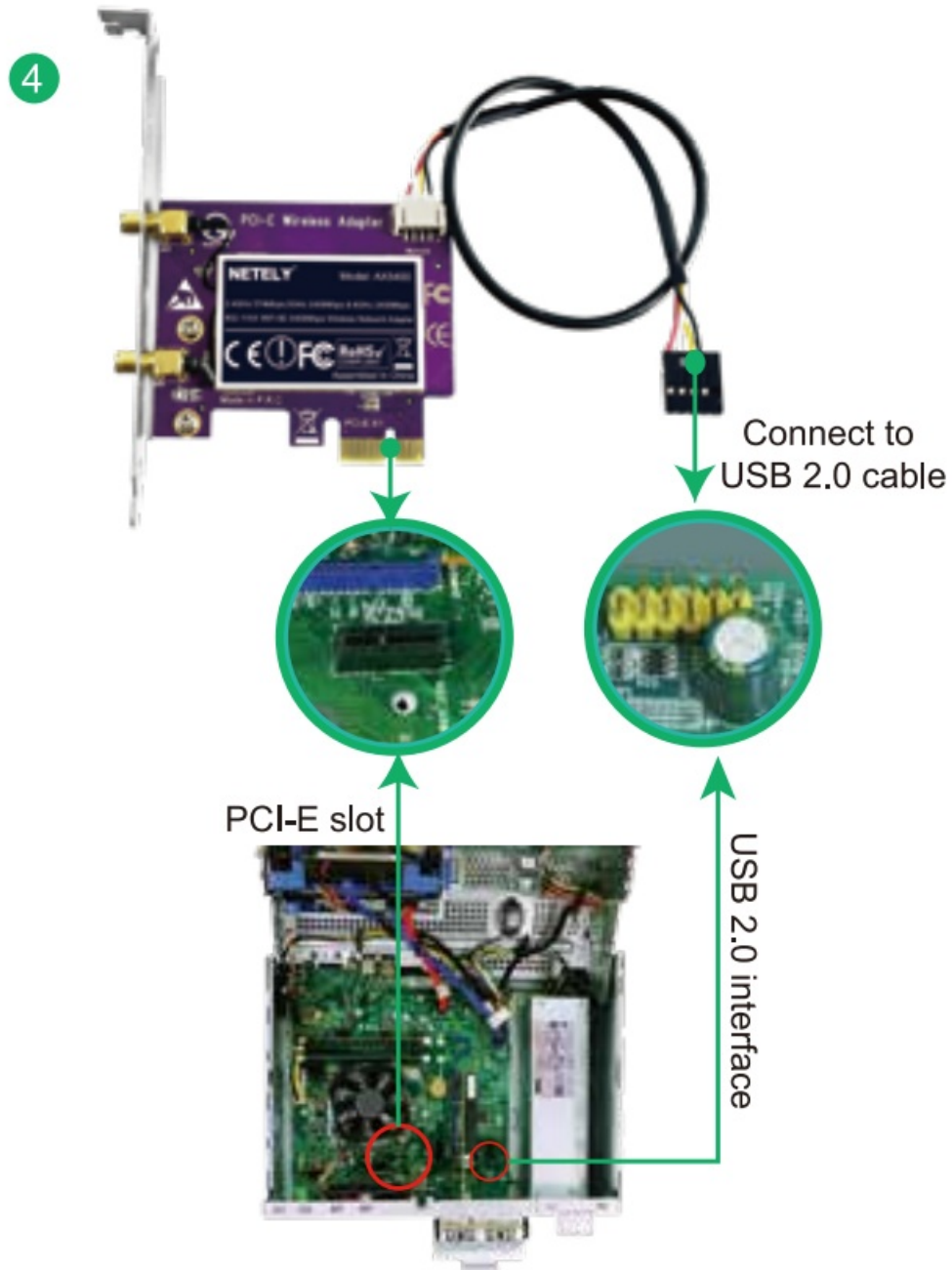
Package List: 1X AX5400 1X Mini driver CD 1X User manual 1X Mounting screw 1x WiFi antennas kit 1X Low profile bracket 1x USB 2.0 Cable

Install WiFi Adapter Hardware on PCs:

Step 1. Switch OFF, unplug computer from main socket, unplug power-cord and other connected peripheral devices. Remove PC case cover.



Step 2. Find correct PCI express slot, insert this WiFi card into an empty PCI-E slot on motherboard. Find USB 2.0 interface, plug in the USB 2.0 cable. PLEASE NOTE: Slim PCs need change to low profile bracket



Step 3. Screw the antennas directly to wireless network card. If needed, the antennas can be adjusted and face to wireless AP's direction. It will improve the wireless network reception. Then reattach the PC's cover, put back all peripheral devices and turn on computer.

5 Screw on the WiFi Antenna



The add-on WiFi card

How to get latest driver?

1. If PCs have CD-ROM, please open Mini CD directly, refer to install steps as below to complete driver installation.
2. If computers can not read CD, please try to download correct driver from our site www.netely.com or contact us at support@netely.com
3. Get driver from www.intel.com, search "AX210NGW" and download driver for PCs.

Find best way to install driver

1. PCs is online. Have Internet connection already. Link to www.intel.com, search "AX210NGW", find the latest driver for Windows 10/11 64bit and install driver to active this WiFi card.
2. PCs is offline. No Internet connection. Need to install driver from Mini CD and select correct driver by hand. Refer to driver installation steps as below.

Install Driver on Supported System:

Step 1. Know PC System Version

1. Windows 10/11-Desktop-Left click select This PC"- Right-click select "Properties"-Check info "Windows Edition" and "System Type". Make sure Windows system is Windows 10/11 64bit.

Step 2. Select Correct Driver from Mini CD. Open Mini CD and then refer to steps as below:

Windows 10/11 64bit Users: AX5400 will compatible with Windows 10/11 64bit system. So Windows users please click "WiFi Network Driver" and "WiFi Stereo Driver" from Mini-CD.

Linux Kernels Users: AX5400 supports Linux Kernel 5.1+. Linux users please select from path: Mini-CD-Linux-AX5400 to get the source code.

Step 3. Install WWI driver on Windows 10/11 64bit.

1. Double right-click the software and running software



WiFi Network Driver

2. Click "Next"



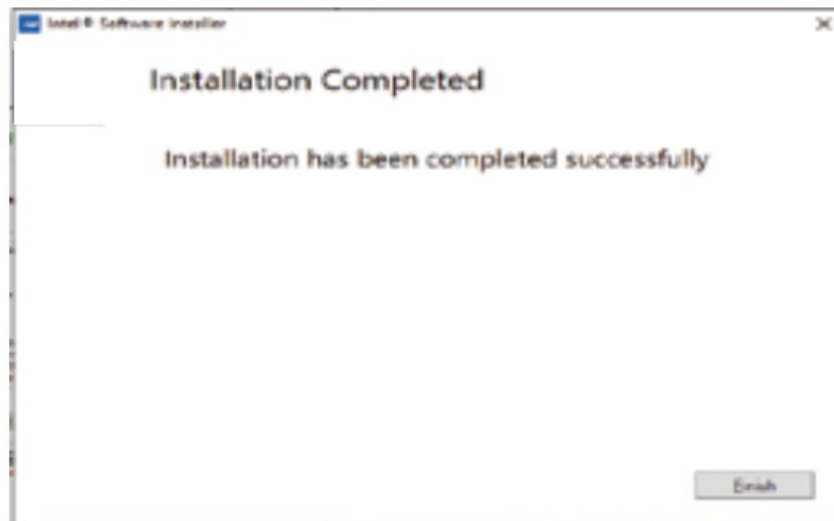
3. Accept license, Click "Install".



4. Waiting the installation.



5. Installation done, click “Finish”. Restart PC.



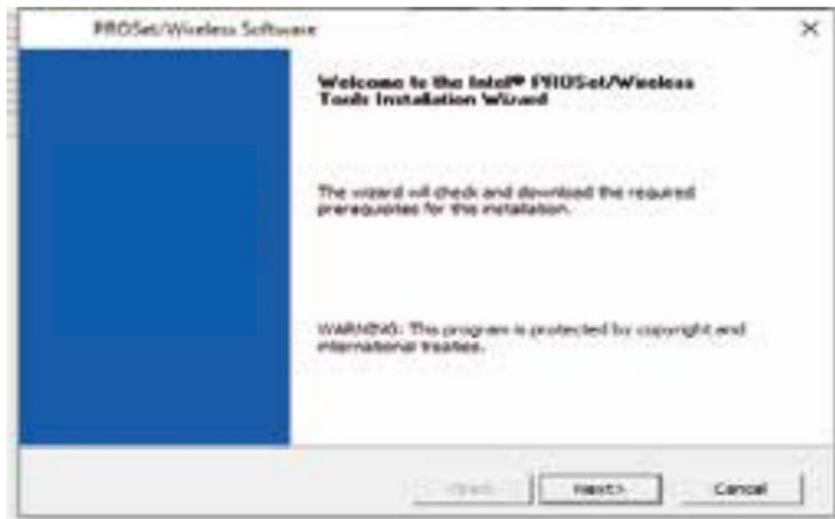
Step 4. Install INiFi Stereo driver.

1. Double right-click the software and running software

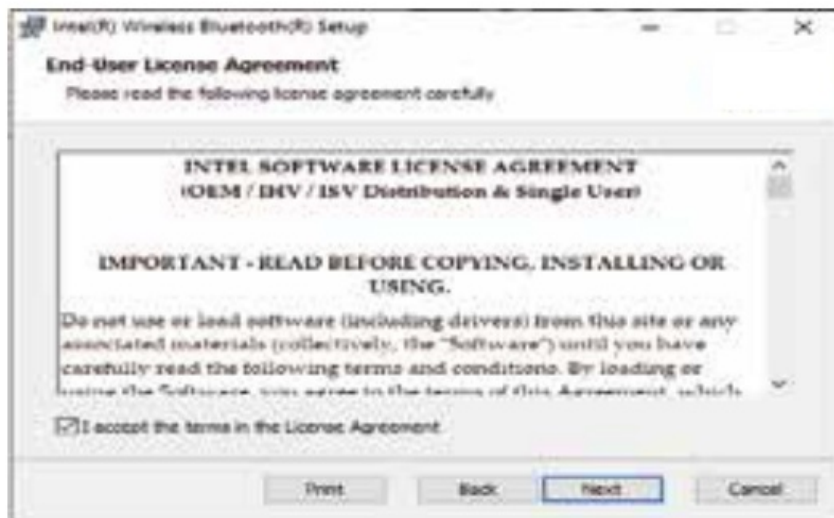


WiFi Network Driver

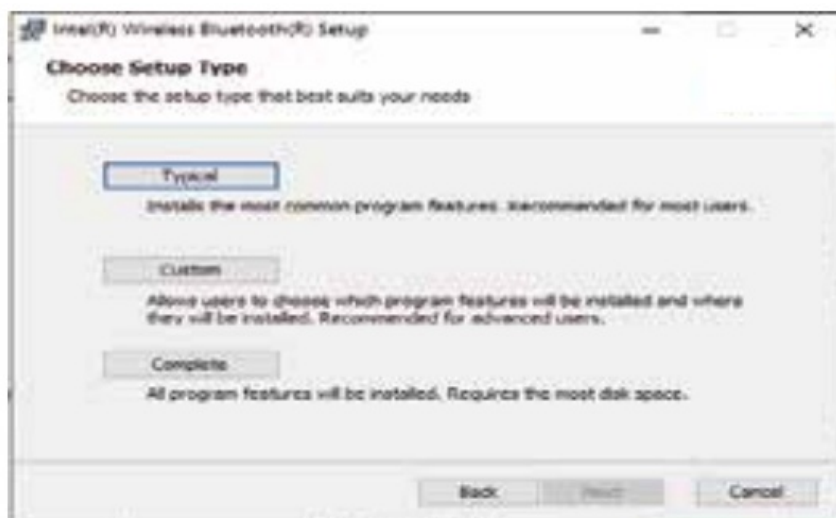
2. Click “Next”



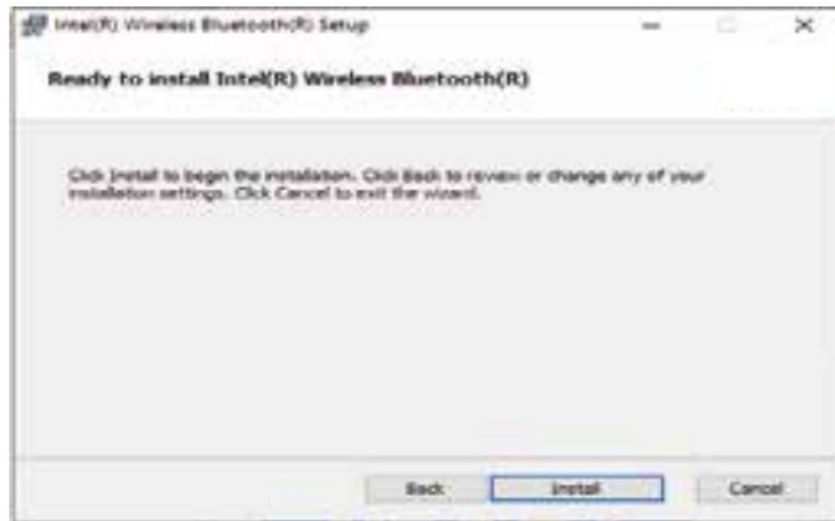
3. Accept license, Click Install.



4. Choose setup type, Click "Typical".



5. Click "Install".



6. Click “Finish”, WiFi Stereo driver installation done.



Connect to WiFi Stereo Device

1. Locate the task bar in the bottom right corner of PC's desktop.
2. Click WiFi stereo icon. And follow windows reminder to connect it to the WiFi audio device.

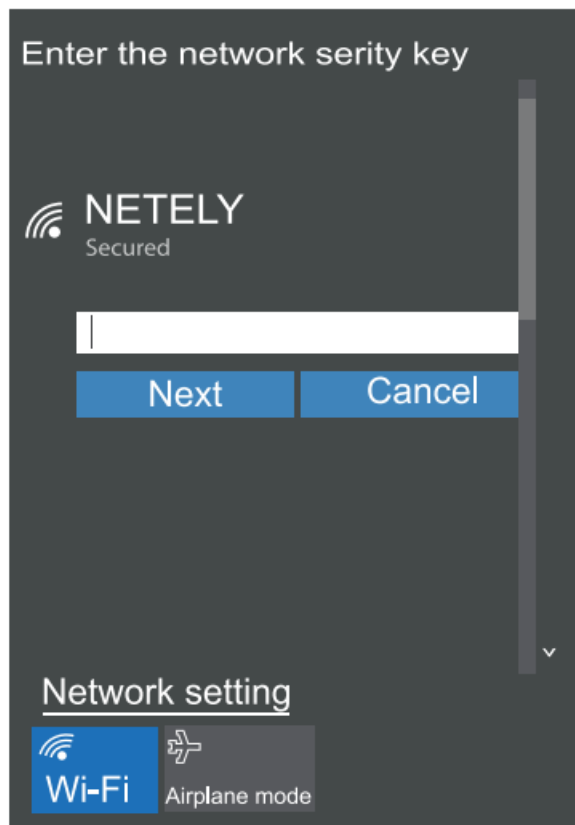
Connect to Internet

1. Locate the task bar in the bottom-right corner of PC's desktop.
2. Select the wireless icon as below on Windows 10/11 64bit system.



Windows10/11

3. Select WiFi signal around PCs, fill correct password and connect to it. Afterwards enjoy super speed internet.



Windows 10/11

How to contact with us ?

Our Site: www.netely.com


Support: support@netely.com

Model: AX5400

Site: www.netely.com

Contacts: support@netely.com

Documents / Resources

	NETELY AX5400 5400Mbps PCIE WiFi Adapter for Windows [pdf] User Manual AX5400 5400Mbps PCIE WiFi Adapter for Windows, AX5400, 5400Mbps PCIE WiFi Adapter for Windows, Adapter for Windows
---	--