



NetComm GateWay Dual Band WiFi VoIP Router USB Storage Setup User Guide

[Home](#) » [NetComm](#) » NetComm GateWay Dual Band WiFi VoIP Router USB Storage Setup User Guide



Contents [[hide](#)]

- [1 USB Storage Setup Guide](#)[NF18ACV FAQs](#)
- [2 Storage Service](#)
 - [2.1 Storage Device Info](#)
 - [2.2 Log in to the web interface](#)
 - [2.3 Accessing USB hard drive Connected to NF18ACV using a Windows PC](#)
 - [2.4 Accessing USB hard drive Connected to NF18ACV using a Mac PC](#)
- [3 Documents / Resources](#)
- [4 Related Posts](#)

USB Storage Setup Guide
NF18ACV FAQs

Storage Service

The Storage Service options enable you to manage attached USB Storage devices and create accounts to access the data stored on the attached USB device.

This guide has been revised to include the latest changes and updates from the NF18ACV's new NC2 web user interface.

Storage Device Info

The storage device info page displays information about the attached USB Storage device.

Log in to the web interface

1 Open a web browser (such as Internet Explorer, Google Chrome or Firefox), type <http://192.168.20.1> into the address bar and press **enter**.



2 At the login screen, type **admin** into both the **User Name** and the **Password** fields and click **Log In**.

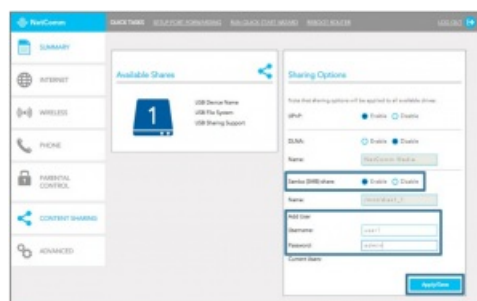
1 of 5

3 Click on the **Content Sharing** menu at the left of the page.

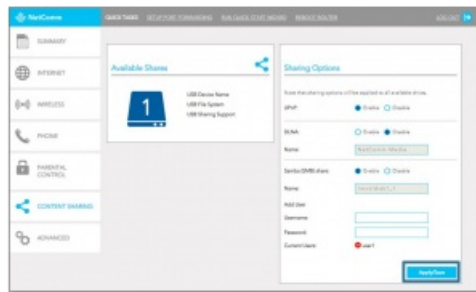


4  Enable **Samba (SMB) Share** and provide user account details.

Click the **Apply/Save** button to create a user account.



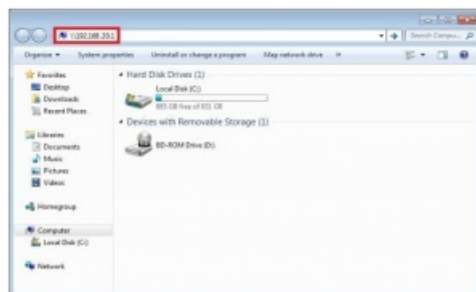
5 Adding an account allows the creation of specific user accounts with a password to further control access permissions.



2 of 5

Accessing USB hard drive Connected to NF18ACV using a Windows PC

1 Exit out from the NetComm router's WEB Interface page and open "Windows Explorer" and type **\\192.168.20.1** on the top address bar.



Note – Windows Explorer is different from the Internet Explorer. You can open a Windows Explorer by opening Computer or Documents.

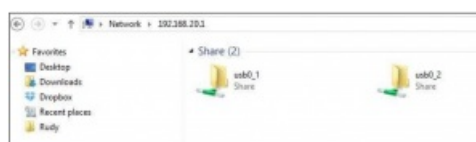


Important - Turn off firewall/ antivirus firewall if it has no connection to USB storage through Wireless.

2 When prompted for login details, type the Storage User Account **Username** and **Password**. The example below uses "user1" as the username.



3 Once you have **logged in**, you will be able to **view and edit** the contents of the USB storage device.



3 of 5

Accessing USB hard drive Connected to NF18ACV using a Mac PC

1 On you Mac click on **Go > Connect to a Server**.



2 Enter the path to the network drive you want to map, ie: **smb://192.168.20.1** then click **Connect**.



4 of 5


3 Enter your Storage User Account user **Name** and **Password** as shown below and click the **Connect** button to mount the network drive.



4 The drive will now appear on your **finder window sidebar**.



Documents / Resources

	<p>NetComm GateWay Dual Band WiFi VoIP Router USB Storage Setup [pdf] User Guide GateWay Dual Band WiFi VoIP Router USB Storage Setup, NF18ACV</p>
---	--