



Netatmo NDL01 Smart Door Lock and Keys Instruction Manual

[Home](#) » [Netatmo](#) » Netatmo NDL01 Smart Door Lock and Keys Instruction Manual 

Contents

- [1 Netatmo NDL01 Smart Door Lock and Keys](#)
- [2 Product Usage Instructions](#)
- [3 Pack contents](#)
- [4 Product overview](#)
- [5 Compatibility](#)
- [6 Product use and maintenance](#)
- [7 Troubleshooting](#)
- [8 Technical specification](#)
- [9 Documents / Resources](#)
 - [9.1 References](#)
- [10 Related Posts](#)



Netatmo NDL01 Smart Door Lock and Keys



Product Information

- Product Name: Smart Door Lock and Keys
- Model Number: NDL01
- Website for Online Installation Video: <https://doorlock.netatmo.com>

Product Usage Instructions

Please read the following instructions carefully before starting the installation:

- The product should not be modified in any way except in accordance with the modifications described in the instructions.
- If your door is equipped with a European cylinder, you can easily replace it with the Netatmo Smart Door Lock. However, if your door has a different type of cylinder, please contact a professional to replace it with the Netatmo Smart Door Lock.
- If your door is equipped with an outdoor security hiding the eurocylinder, this may prevent the installation of the Netatmo Smart Door Lock. In such cases, please contact a professional for advice before installing the product.

Pack Contents:

- A. One Smart Door Lock
- B. Three Smart Keys
- C. One Property Card (Do not throw away)
- D. Four AAA batteries
- E. One M5-60 steel fixing screw, length (backset + 10 mm)
- F. One Allen key
- G. Two extension kits
- H. One door measurement tool

Product Overview:

The product overview includes the following components:

- A. Outdoor knob and key hole
- B. USB trapdoor
- C. European cylinder
- D. Cam
- E. Securing ring
- F. Indoor handle cover

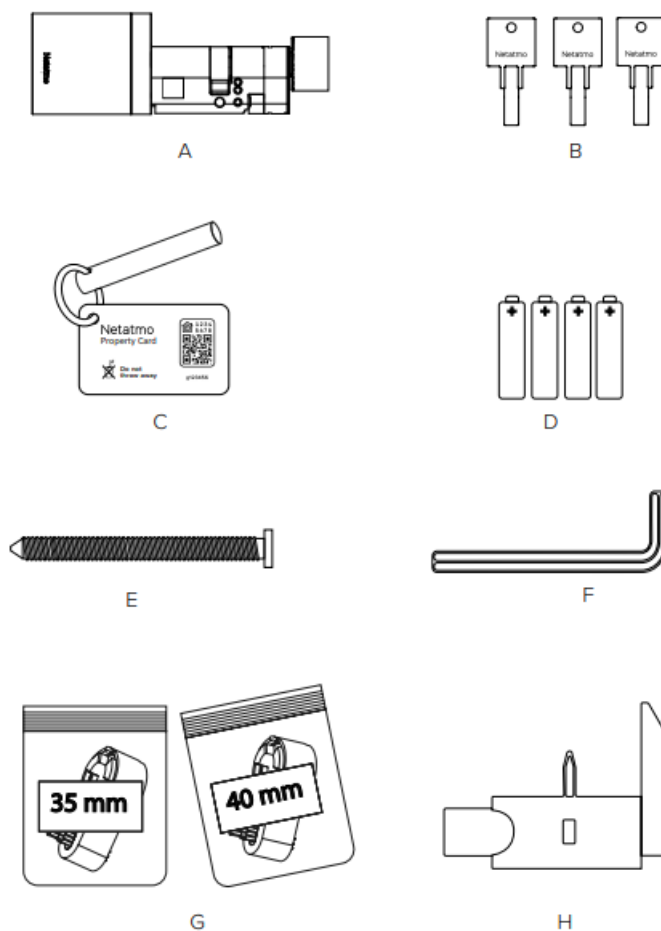
Note: The instructions are provided in multiple languages. Please refer to the appropriate language section for detailed instructions.

You can watch an installation video tutorial online at the following address:

Read these instructions carefully before starting the installation.

The product should not be modified in any way except in accordance with those modifications described in the instructions.

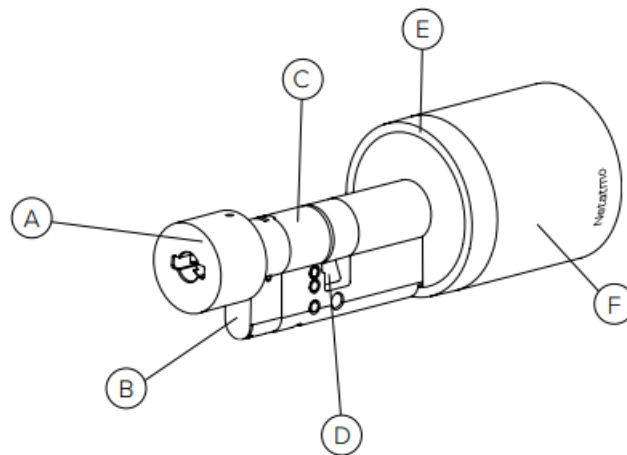
Pack contents



- **A.** One Smart Door Lock
- **B.** Three Smart Keys
- **C.** One property card

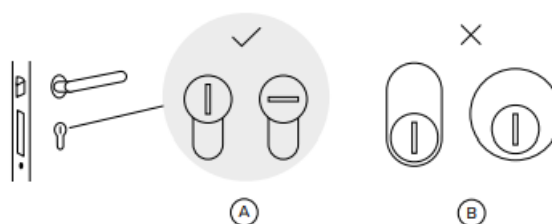
- **D.** Four AAA batteries
- **E.** One M5-60 steel fixing screw, length \geq backset + 10 mm
- **F.** One Allen key
- **G.** Two extension kits
- **H.** One door measurement tool

Product overview



- **A.** Outdoor knob and key hole
- **B.** USB trapdoor
- **C.** European cylinder
- **D.** Cam
- **E.** Securing ring
- **F.** Indoor handle cover

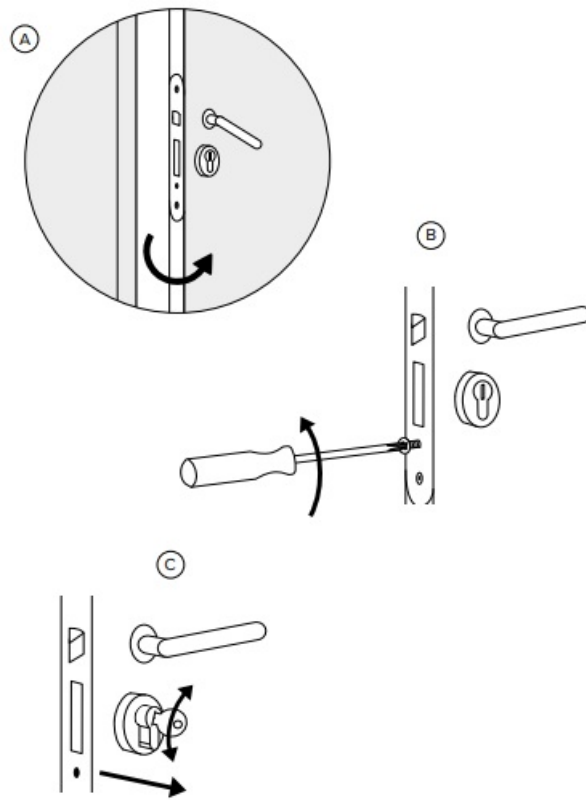
Compatibility



There are different types of door cylinders. Only the European cylinders (A) can be easily replaced with the Netatmo Smart Door Lock. If your door is equipped with another type of cylinder (B), please contact a professional to replace it with the Netatmo Smart Door Lock.

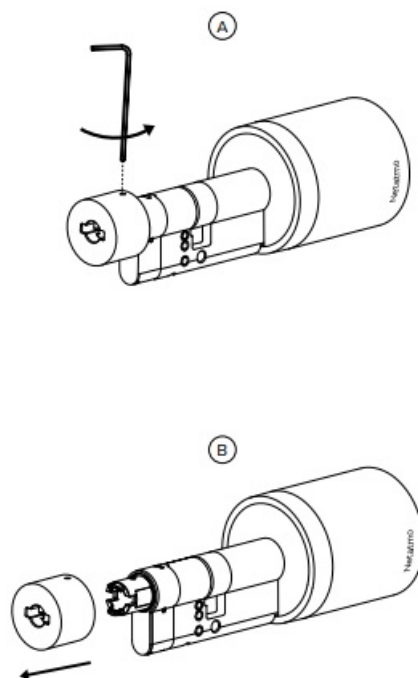
Note: if your door is equipped with an outdoor security hiding the eurocylinder, this can prevent the installation of a Netatmo Smart Door Lock. Please contact a professional for advice before installing your product.

Remove the existing cylinder



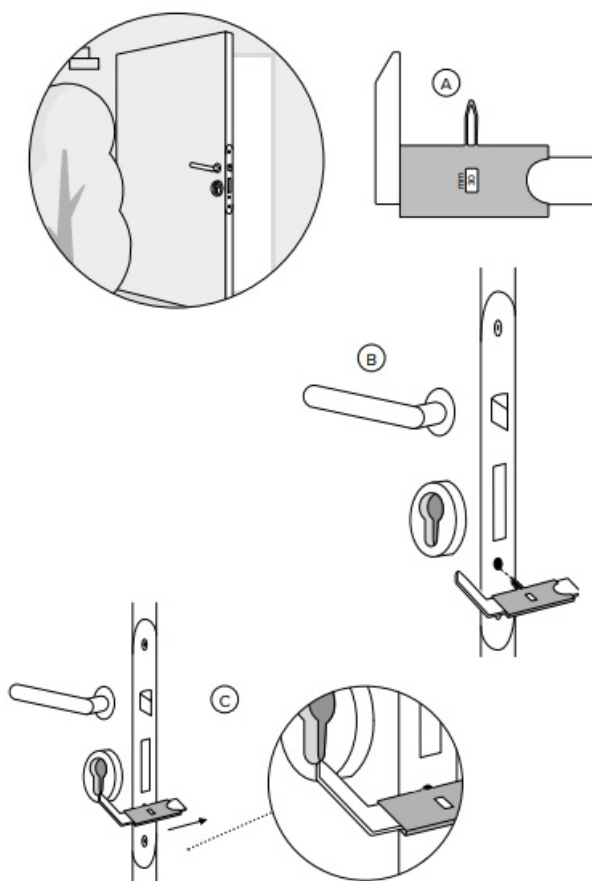
- **A.** Open the door and locate on the edge the fixing screw at the level of the eurocylinder.
Tips: This screw is usually different from the other screws along the edge of the door.
- **B.** Unscrew the fixing screw with a suitable screwdriver.
- **C.** Insert your key into the existing cylinder and turn it a few degrees in one direction or the other while gently pulling out the cylinder of your door

Prepare the Smart Door Lock



- **A.** Unscrew the outdoor knob using the Allen key.
- **B.** Pull out the outdoor knob from the Smart Door Lock.

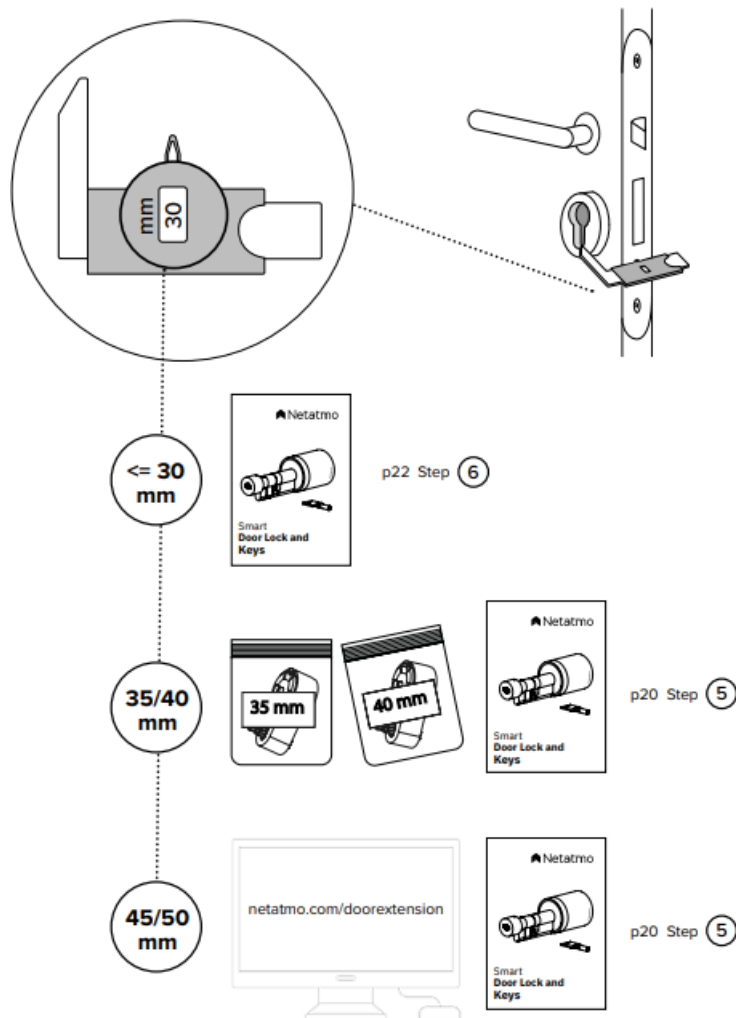
Measure the outdoor thickness



- **A.** Use the door measurement tool provided in the pack to measure the outside thickness of your door.
- **B.** Insert the black arrow in the hole of the M5 fixing screw on the edge of the door.
- **C.** Pull the tab until it covers the outdoor decoration of your lock (plate or rosette).

Note: if in doubt, you can also confirm your measurement directly on the cylinder you removed from the door.

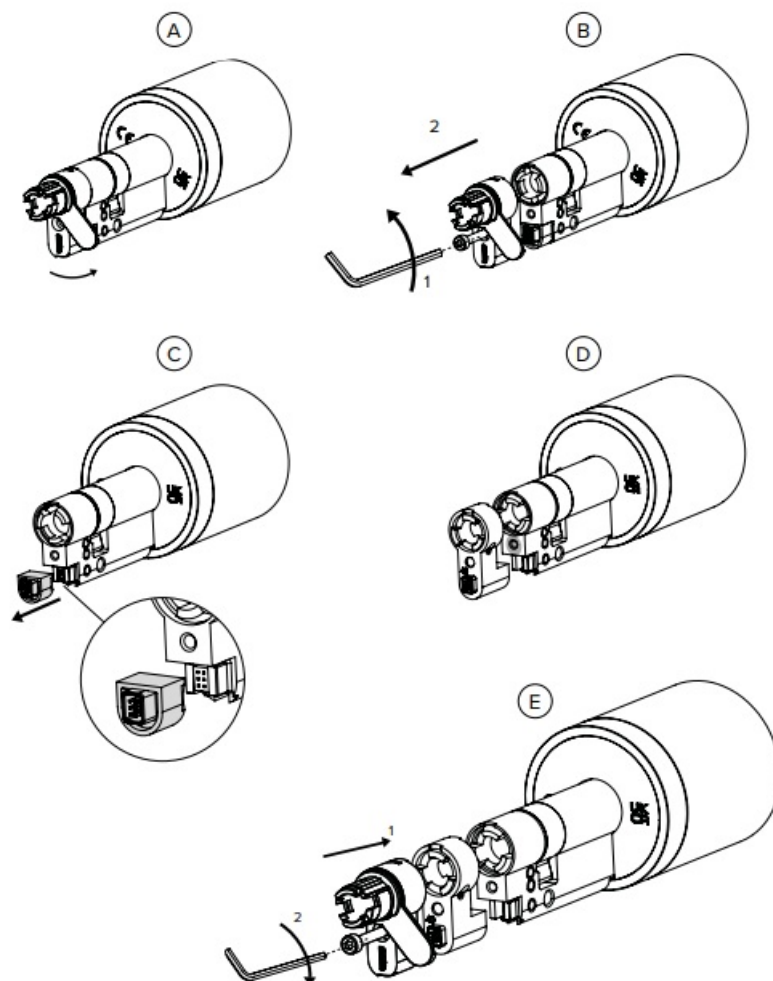
Select the outdoor extension



Read the outdoor thickness of your door in the reading window

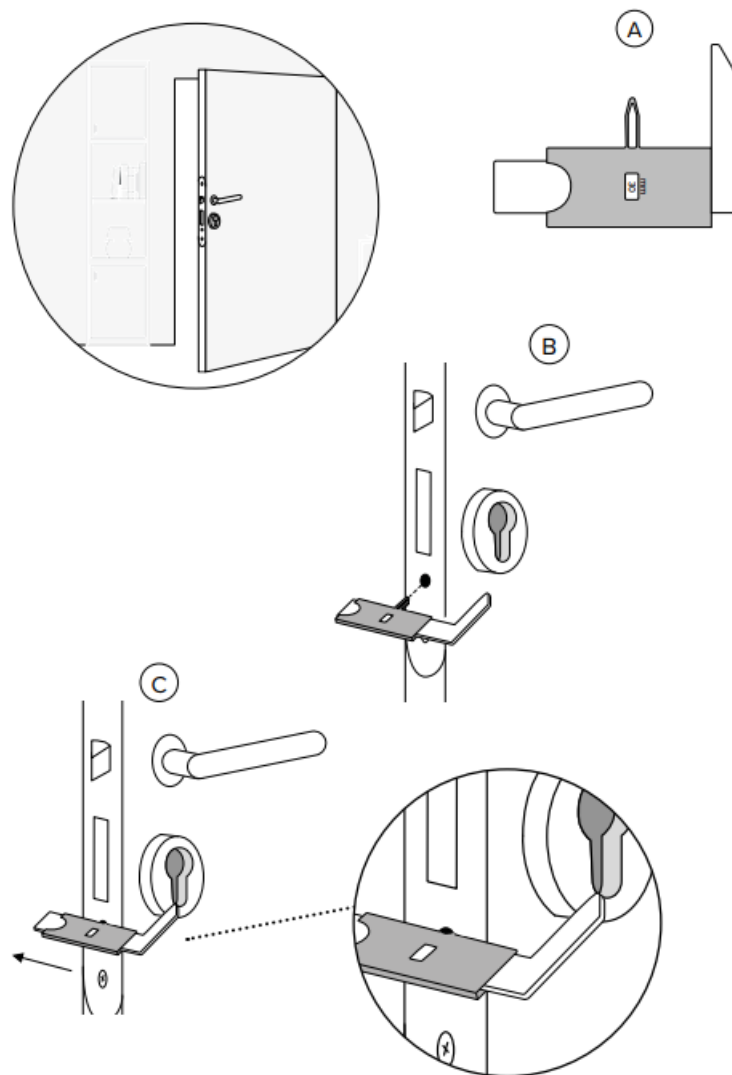
- 30 mm (or less): go to page 22, step (6)
- 35 or 40 mm: take the extension kit of the corresponding thickness in the pack and continue on the next page, step (5)
- 45 ou 50 mm: order the extension on netatmo.com/doorextension, then continue on the next page, step (5)

Add the outdoor extension (35, 40, 45, or 50 mm)



- **A.** Open the USB trapdoor, by rotating it to the right.
- **B.** Unscrew the holding screw on the front panel using the Allen key and remove the extremity of the European cylinder. You will not need this screw anymore.
- **C.** Remove the black connector at the bottom of the European cylinder. You will not need it anymore.
- **D.** Insert the extension selected in the previous step.
- **E.** Insert back the extremity of the European cylinder and tighten the screw selected in the previous step. Then close the USB trapdoor.

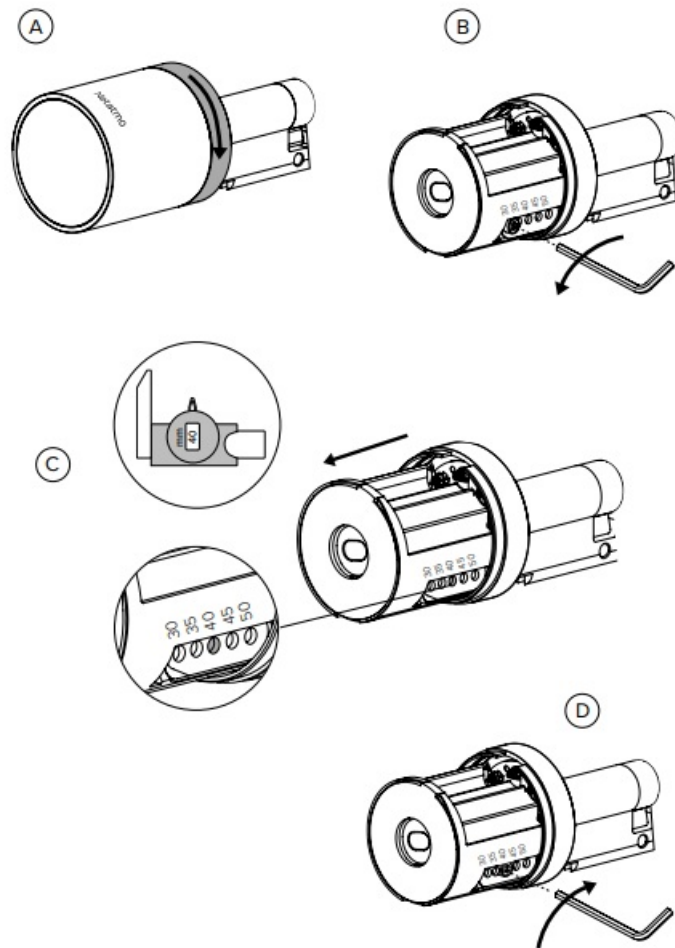
Measure the indoor thickness



- **A.** Use again the door measurement tool provided in the pack to measure the indoor thickness of your door.
- **B.** Insert the black arrow in the hole of the fixing screw on the edge of the door.
- **C.** Pull the tab until it covers the indoor decoration of your lock (plate or rosette).

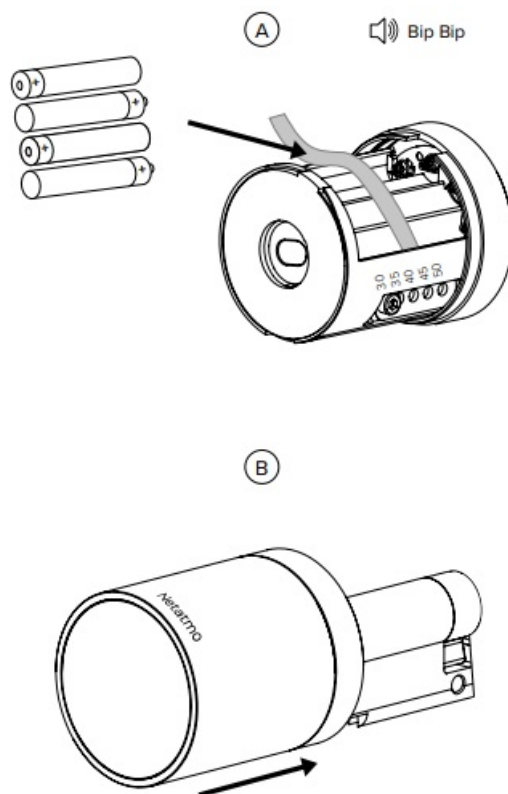
Note: if in doubt, you can also confirm your measurement directly on the cylinder you removed from the door.

Set the indoor length (30, 35, 40, 45 or 50 mm)



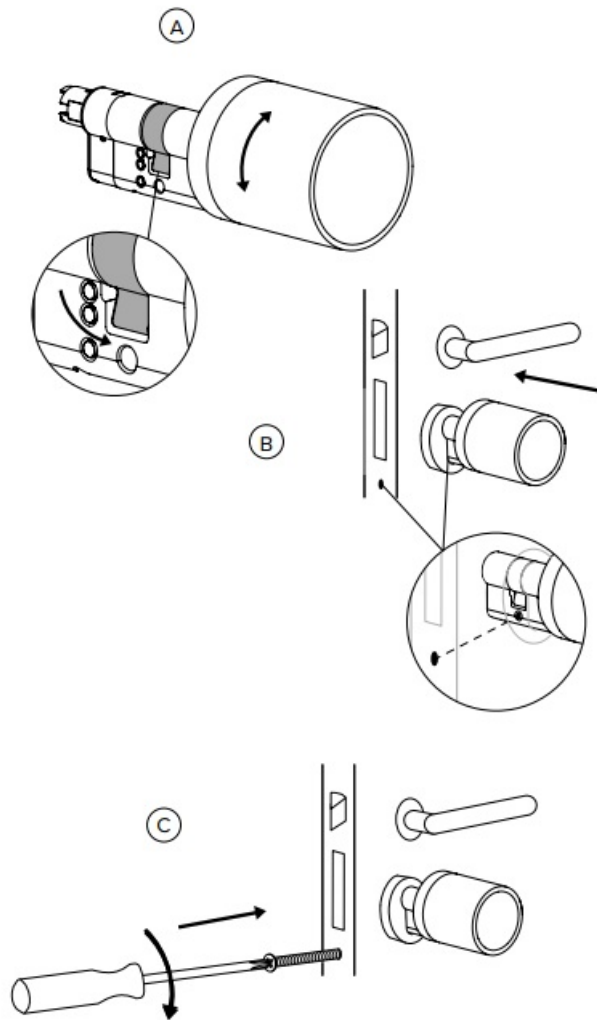
- **A.** Unscrew the securing ring and remove the cover.
- **B.** If the measurement read in step 6 indicated 30 mm, proceed to step 8. Otherwise, unscrew the positioning screw using the Allen key.
- **C.** Pull out the battery box to align the hole with the engraving corresponding to the length measured in step 6.
- **D.** Screw back tightly the positioning screw.

Insert the batteries



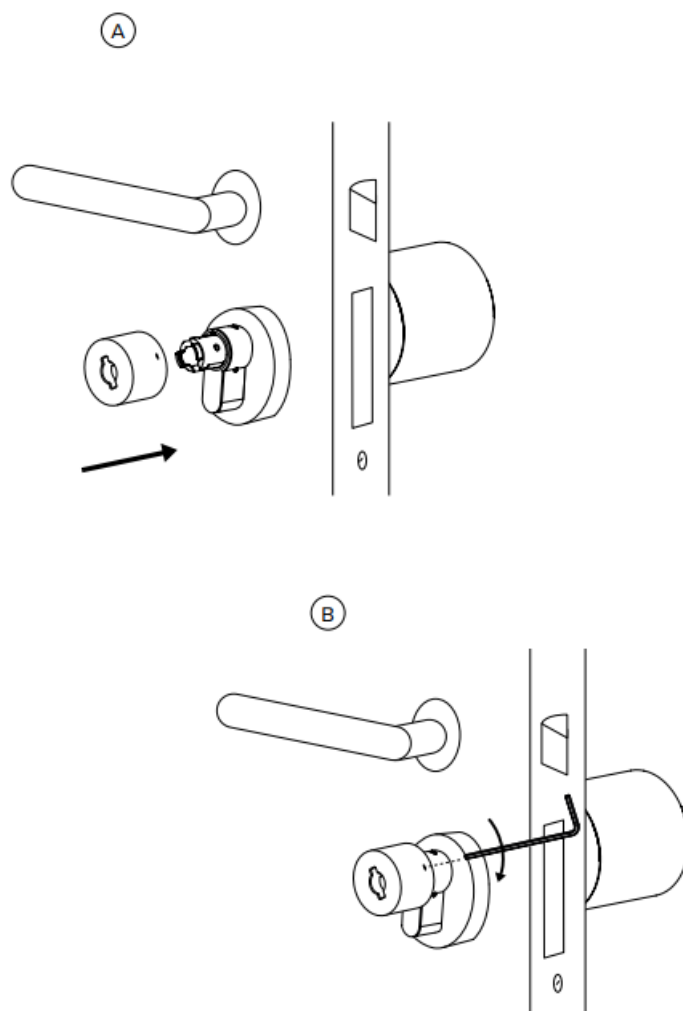
- **A.** Insert the 4 AAA batteries over the ribbon ensuring the positive and negative ends match the engraving. The Smart Door Lock will emit a sound signal to indicate it has been powered on.
- **B.** Put the cover back on.

Install the Smart Door Lock



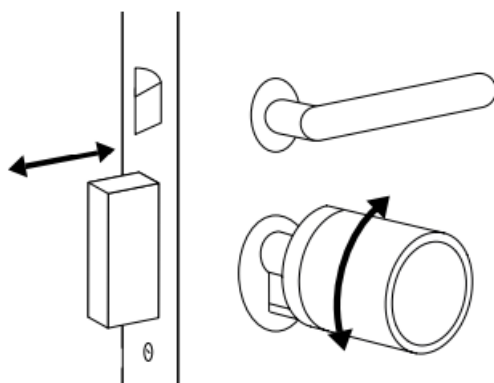
- **A.** Align the cam vertically with the body of the European cylinder by turning the indoor handle.
- **B.** Insert the Smart Door Lock from the indoor side of the door. Make sure to align the M5 hole in the Smart Lock with the hole in the door.
Tip: if you can lock/unlock your door with the indoor handle, you are aligned.
- **C.** Screw without forcing the M5 fixing screw provided with a suitable screwdriver.
Tip: If the provided M5 screw is not compatible, use your original screw.

Install the outdoor knob



- **A.** Check that you have access to the USB trapdoor by rotating it to the right.
Note: If the trapdoor is blocked by your door, increase the length of your cylinder by using the extensions.
- **B.** Insert the outdoor knob by aligning its screw with the hole on the black part.
- **C.** Screw back the outdoor knob screw with the Allen key.

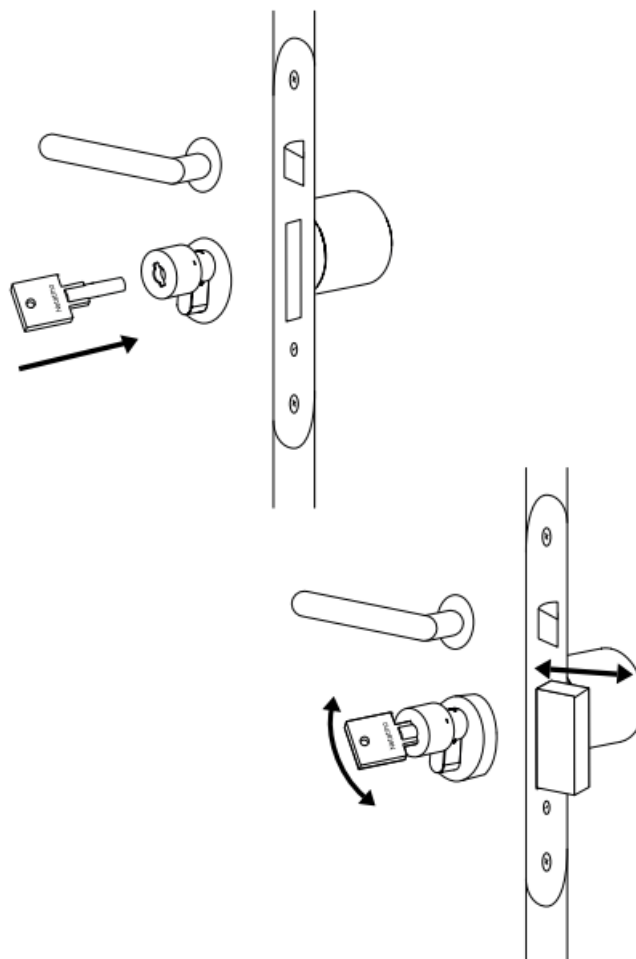
Test the Smart Door Lock from the inside



Lock and unlock the door by turning the indoor handle of the Smart Door Lock.

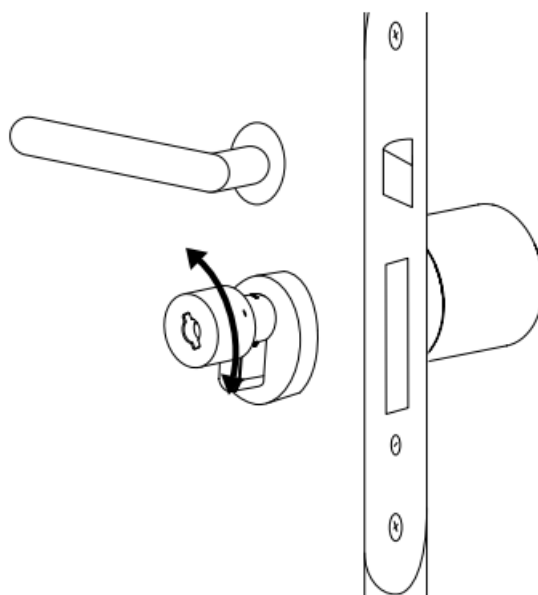
Check that your door can open properly: the handle must not block or bang the wall while opening. In case of problems, refer to the help p.46.

Unlock from the outside



Insert one of the provided Smart Keys in the slot of the Smart Door Lock. Lock and unlock the door by turning the Smart Key. In case of problems, refer to the help p.46.

Check your Smart Door Lock is secured from the outside



Pull out the Smart Key from the Smart Door Lock. Try to unlock / lock the door by turning the outdoor knob of the Smart Door Lock: check that it turns freely preventing the opening. Check that the indoor handle cannot be reached with the hand when the door is closed. In case of problems, refer to the help p.46.

Property Card



Make sure you keep the Property Card in a safe place.

This card is the only way to manage the advanced security settings of your Smart Door Lock. You will also find the setup code on it.

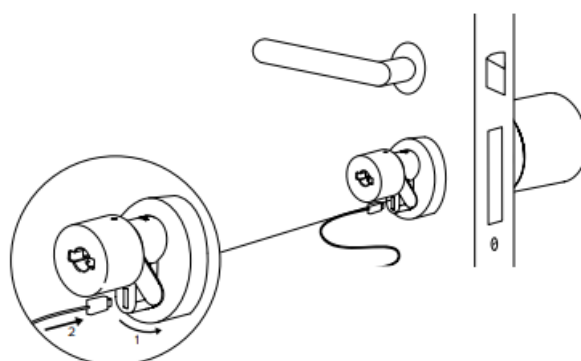
Download the app and follow the instructions



To set up and control your Smart Door Lock from your smartphone or tablet, download the application. You can add or remove Smart Keys and send invitations.

Product use and maintenance

Procedure in case of Empty Battery .



The Smart Door Lock benefits from more than a year of autonomy. When the battery is low, it warns you to replace the batteries. If you have not replaced your batteries in time, you can still open your Smart Door Lock punctually by powering it through the micro USB port:

- Open the front cover under the outer knob.
- Plug a micro-USB cable into the micro-USB port of the Smart Door Lock (the micro-USB cable required may be the same as that used to charge some smartphones)
- Then plug the cable into a power bank. The Smart Lock will emit a sound signal to indicate that it is switched on.
- Unlock the door using the mobile application.
- Remove the USB cable and close the cover.
- Change the batteries from the inside.

Note: You will not lose your data stored in the Smart Lock.

Troubleshooting

If you cannot lock / unlock your door:

- Check that the fixing screw is not too tightened (it can block the system).
- Check that nothing blocks the Lock.
- Check that the batteries are well inserted by removing them. Then put them back over the ribbon ensuring the positive and negative ends match the engraving. The Smart Door Lock will emit a sound signal to indicate it has been powered on.

For any question or help, please visit:

<https://helpcenter.netatmo.com>

Sound signals

Indicator	Meaning
2 short beeps	Electrical boot
1 long beep	Smart Key denied

Technical specification

SIZE

Smart Door Lock

- Length: 146mm
- Indoor handle diameter: 50mm
- Outdoor knob diameter: 26mm
- Weight: 330g
- Smart Key

- Height: 58mm
- Width: 26mm
- Tube diameter: 8mm
- Weight: 20g

POWER

- 4 x 1.5V AAA batteries
- Notification when low battery
- MicroUSB for empty battery
- 5VDC – 0.6A

REQUIREMENTS

- Door equipped with European cylinder
- Door thickness between 40mm and 100mm

CERTIFICATIONS

- Classification following EN 15684
- Smart Door Lock: 16A4AF32
- Smart Key: 16A4AF22

FIRE DOOR

- The installation on a fire door is in principle possible. However, you must check if its use is allowed.

STORAGE

- Max amount of Smart Door Lock associated to one Smart Key: 80

WEATHERPROOFNESS

- EN15684 protection standard

OPERATING TEMPERATURE

- -25°C to +65°C

STORAGE TEMPERATURE

- -25°C to +65°C

CONNECTIVITY SPECIFICATIONS

- Bluetooth Low Energy (2.4 GHz – 2.48GHz < 100mW)
- Connection between Smart Key and Smart
- Door Lock: NFC (13.56MHz < -10dBμA/m @ 10m)

FREE APP

- No subscription fee
- App available on the App Store / Google
- Play

APP COMPATIBILITY

- A recent version of Android with access to Google Play is recommended with Bluetooth 5 Low Energy technology (BLE).
- To control this HomeKit-enabled accessory, the latest version of iOS or iPadOS is recommended.

COMPATIBLES ACCESSORIES

- Extension kits for 35, 40, 45 and 50mm
- Smart Keys

SAFETY WARNINGS

This device is not intended for use by persons (including children) with reduced physical, sensory or mental capabilities, or lack of experience and knowledge, unless they have been given supervision or instruction concerning use of the appliance by a person responsible for their safety. Children should be supervised to ensure that they do not play with the appliance.

Before inserting the batteries, check that the contacts in the device and on the batteries are clean, and clean them if necessary. Note the polarity (+/-) when inserting the batteries.

Do not throw the batteries into a fire, short-circuit it or dismantle it. Keep children away from batteries. Seek medical attention immediately if a battery is swallowed.

In accordance with EN15684 standard, the indoor handle of the Smart Door Lock is for indoor use only and must be protected from damp and dust, and the outdoor knob can be used outdoor.

HOMEKIT

Controlling this HomeKit-enabled accessory automatically and away from home requires a HomePod, Apple TV, or iPad set up as a home hub. It is recommended that you update to the latest software and operating system.

LEGAL NOTICE

Use of the Works with Apple HomeKit badge means that an electronic accessory has been designed to connect specifically to iPod touch, iPhone, or iPad, respectively, and has been certified by the developer to meet Apple performance standards. Apple is not responsible for the operation of this device or its compliance with safety and regulatory standards.

Apple, Apple Watch, iPad, iPad Air, iPhone, and iPod touch are trademarks of Apple Inc., registered in the U.S. and other countries.

HomeKit is a trademark of Apple Inc.

App Store is a service mark of Apple Inc., registered in the U.S. and other countries.

Android, Google, Google Play and related marks and logos are trademarks of Google LLC.

Non-binding document, may be modified without prior notice.

EU Declaration of Conformity

Hereby, NETATMO, declares that the radio equipment type NDL01 is in compliance with Directive 2014/53/EU as well as the RoHS Directive 2011/65/EU and its amendment 2015/863/EU.

www.netatmo.com/declaration/ndl

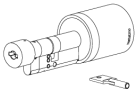
Netatmo SAS – 73/77 rue de Sèvres – 92100 Boulogne-Billancourt

<https://helpcenter.netatmo.com>

Copyright Netatmo © 2023 All rights reserved.

Reproduction and distribution prohibited without written authorization from Netatmo.

Documents / Resources

 <p>Smart Door Lock and Keys</p>	<p>Netatmo NDL01 Smart Door Lock and Keys [pdf] Instruction Manual</p> <p>NDL01 Smart Door Lock and Keys, NDL01, Smart Door Lock and Keys, Lock and Keys, Keys</p>
---	--

References

- netatmo.com/declaration/ndl
- [Installation guide for the Smart Door Lock and Keys | Netatmo](#)