

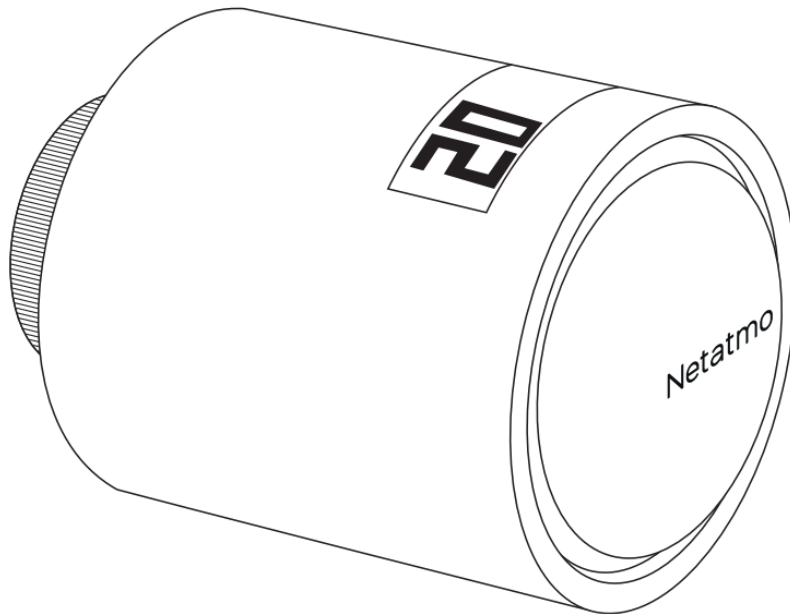


Netatmo NA-74-009 Additional Smart Radiator Valve Installation Guide

[Home](#) » [Netatmo](#) » Netatmo NA-74-009 Additional Smart Radiator Valve Installation Guide 



NA-74-009 Additional Smart Radiator Valve Installation Guide



Contents

- 1 NA-74-009 Additional Smart Radiator Valve
- 2 In the box
- 3 Application
- 4 Installation
- 5 Valve installation
- 6 Installation advice
- 7 Technical specification
- 8 Documents / Resources
 - 8.1 References
- 9 Related Posts

NA-74-009 Additional Smart Radiator Valve

Quick installation guide | Additional Smart Radiator Valve

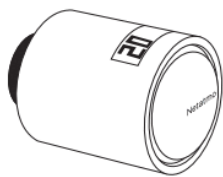
You can watch an installation tutorial video online at the following address: <https://addvalve.netatmo.com>



Read these instructions carefully before starting the installation.

The device is for indoor use only and must be protected from damp and dust as well as solar radiation.

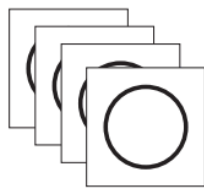
In the box



1. One Smart Radiator Valve



2. One set of 2 AA batteries



3. One set of colour adhesives

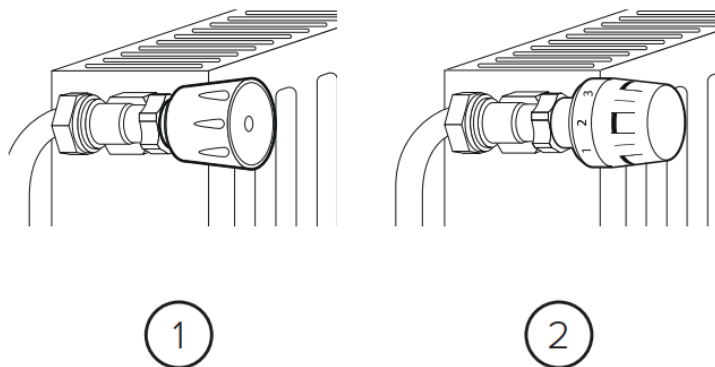


4. One set of radiator adaptors and accessories

In the box:

1. One Smart Radiator Valve
2. One set of 2 AA batteries
3. One set of colour adhesives
4. One set of radiator adaptors and accessories

Compatibility



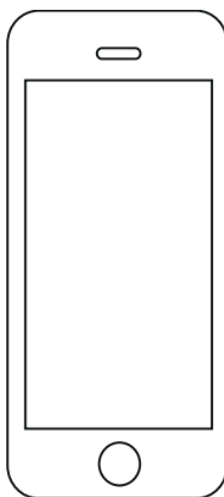
Compatibility

There are two types of radiator valves: manual valves (1), and thermostatic valves (2).

Thermostatic valves (usually with numbered graduation marks from 1 to 5) can be easily replaced with the Netatmo Valve.

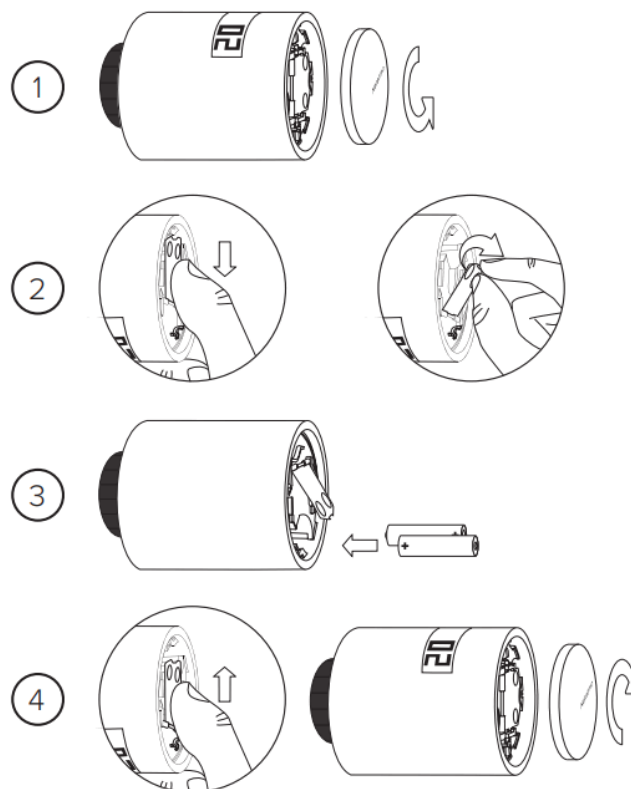
Note: If your installation also includes manual valves you can leave them as they are or call a professional to replace them.

Application



Before inserting the batteries into your valves, download the mobile application Energy Netatmo. To find out how to remotely control your Valves from your smartphone or tablet, go to: <https://valve.netatmo.com>

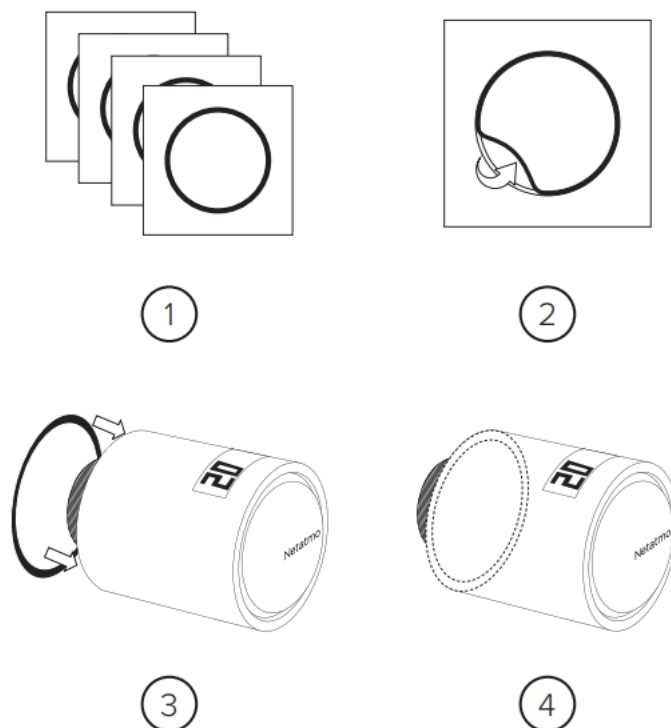
Batteries



Follow the steps below, only when required in the application

1. Open the front panel of the Valve using a small anti-clockwise rotation.
2. Open the metal battery cover.
3. Insert the batteries ensuring the positive and negative ends correspond.
4. Close the metal battery cover and replace the front panel.

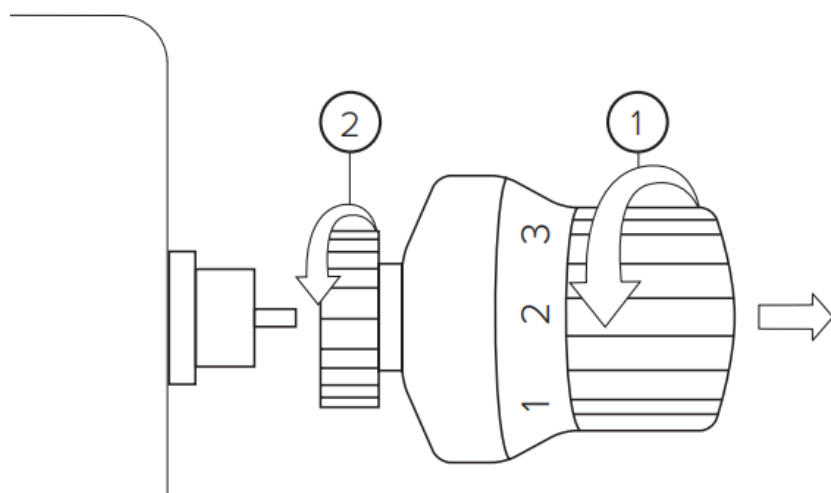
Customisation



Customisation

You can customise each Valve using one of the colour adhesives provided.

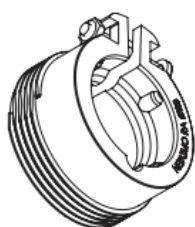
Installation



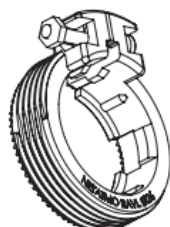
Removing the old valve

Rotate the valve counter-clockwise to remove it from the radiator (1). Unscrew the securing ring (2) and remove the valve.

Radiator Adaptors



Danfoss RA



Danfoss RAVL



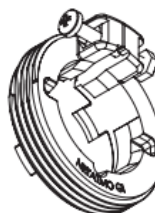
M30 x 1.5



M30 x 1



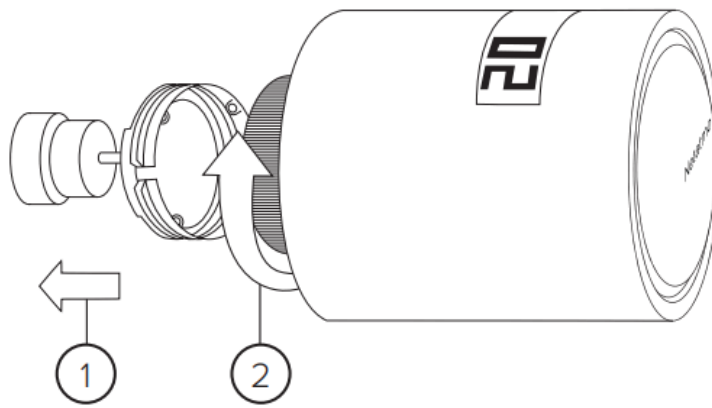
M28 x 1.5



Giacomini (GI)

Use the adaptor selection guide provided to choose the adaptor that fits onto your radiator valve body. For more help, you can use our online compatibility tool at: <https://check.netatmo.com>

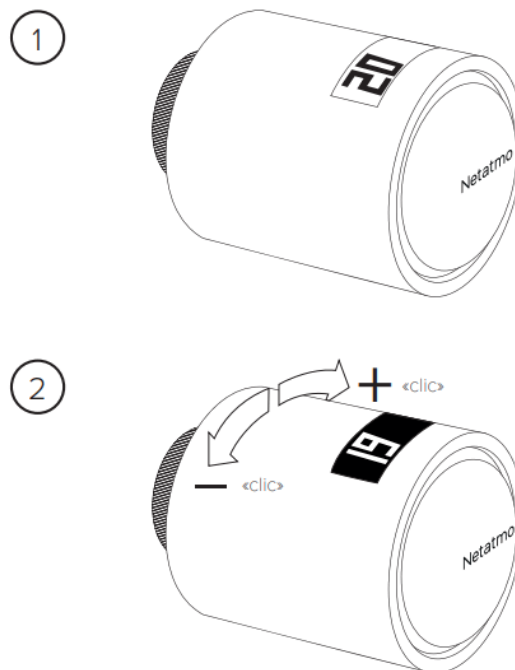
Valve installation



Valve installation

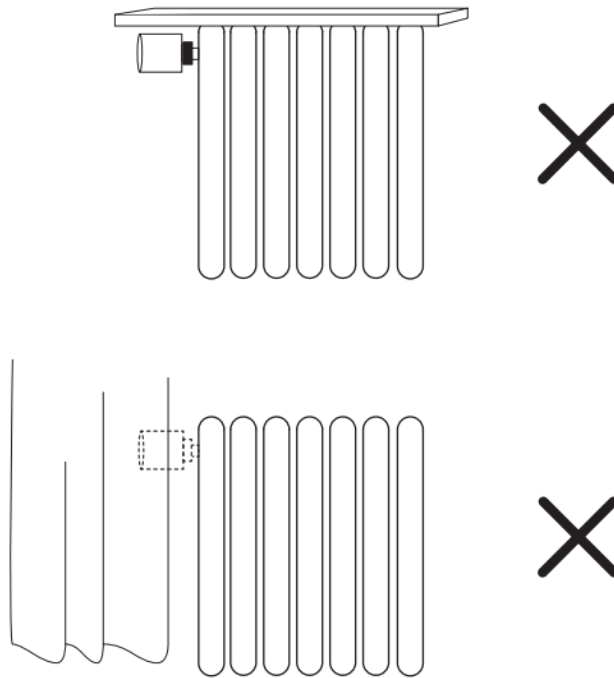
Fit the suitable adaptor (1) onto the valve body. Then, screw the Netatmo Valve onto the adaptor (2) while turning it to ensure the display faces the right direction. Do not use a wrench.

Test



The display shows the room temperature (1). To increase/ decrease the temperature setpoint on the Valve, twist the cylinder clockwise/anticlockwise. The manual setpoint is temporarily displayed on a black background (2).

Installation advice



Installation advice

Do not block air ventilation next to the Valve (curtain, radiator cover...) Do not cover.

Technical specification

SIZE

Valve: 58 mm (diameter), 80 mm (L)

WEIGHT

Valve: 186 g (including batteries)

DESIGN

Designed by Starck

SENSORS AND MEASUREMENTS

Temperature (measurement):

Range: 0°C to 50°C

Accuracy: +/- 0.5°C

Temperature (setpoint):

Range: 5°C to 30°C

Increment: 0.5°C

Motor:

Linear motion: 8 mm max

Noise level: < 35 dBA

Spring force: 80 N max

E-PAPER DISPLAY

Energy efficient, longer battery life and optimal readability.

FREE APP, LIFETIME SUPPORT

No subscription fee. App available on the App Store and on Google Play. Free access to your online personal dashboard. Accessible from multiple devices.

WIRELESS SPECIFICATIONS

Wireless connection between Valves and Relay: long-range radio (868.9-869.1 , 869.7-869.9 MHz @16mW).

POWER AND BATTERIES (PER VALVE)

Two 1.5V AA batteries. Two year-battery life.

SETUP AND COMPATIBILITY (PER VALVE)

6 radiator adaptors suitable for use with the following valve bodies: M30x1.5, M30x1.0, M28x1.5, Danfoss RAVL, Danfoss RA, Giacomini.

SAFETY WARNINGS

This device must be installed according to the applicable norms. Use only with supplied power plug adaptor. This device is for indoor use only. Before inserting the batteries, check that the contacts in the device and on the batteries are clean, is necessary clean them. Note the polarity (+/-) when inserting the batteries. Do not throw the

batteries into a fire, short-circuit them or dismantle them. Keep children away from batteries. Seek medical attention immediately if a battery is swallowed. Do not attempt to repair the device yourself; customer service is available. Any changes or modifications to this unit not expressly approved by the party responsible for compliance could void the user's authority to operate the equipment.

This device is not intended for use by persons (including children) with reduced physical, sensory or mental capabilities, or lack of experience and knowledge, unless they have been given supervision or instruction concerning use of the appliance by a person responsible for their safety. Children should be supervised to ensure that they do not play with the appliance.

EU Declaration of Conformity

Hereby, Netatmo declares that this NRV01 is in compliance with the essential requirements and other relevant provisions of Directive 2014/53/UE and ROHS 2011/65/EC.

The original EU declaration of conformity may be found at <http://www.netatmo.com/declaration/nav>.



Boulogne-Billancourt, 12/06/2017 CEO
Frédéric POTTER



CE marking is the manufacturer's declaration that the product meets the requirements of the applicable EC directives.



WEEE symbol designates safe and responsible collection, recycling and recovery procedures for all types of electronic waste.



Recycling Universal recycling symbol



<http://support.netatmo.com>




QSG-NAV



Copyright Netatmo © 2020 All rights reserved. Reproduction and distribution prohibited without written authorization from Netatmo. Apple and the Apple logo are trademarks of Apple Inc., registered in the U.S. and other countries. App Store is a service mark of Apple Inc., registered in the U.S. and other countries. HomeKit is a trademark of Apple Inc. Google Play and Google Play logo are trademarks of Google LLC.

Documents / Resources

 <p>Additional Smart Radiator Valve</p>	<p>Netatmo NA-74-009 Additional Smart Radiator Valve [pdf] Installation Guide NA-74-009, Additional Smart Radiator Valve, Smart Radiator Valve, Additional Radiator Valve, Radiator Valve, Valve</p>
--	--

References

-  netatmo.com/declaration/nav
-  netatmo.com/declaration/nav
-  [Netatmo : same home, just smarter](#)
-  [Check compatibility tool](#)
-  [Netatmo : same home, just smarter](#)