


NES Light Light Glass
Railing With LED
Lighting System



NES Light Light Glass Railing With LED Lighting System Installation Guide

[Home](#) » [NES Light](#) » NES Light Light Glass Railing With LED Lighting System Installation Guide 

Contents

- [1 NES Light Light Glass Railing With LED Lighting System](#)
- [2 Specifications](#)
- [3 Glass Railing Installation Guide](#)
- [4 FAQs](#)
- [5 Documents / Resources](#)
 - [5.1 References](#)
- [6 Related Posts](#)



NES Light Light Glass Railing With LED Lighting System



Specifications

- **Design:** Combines clear or frosted glass with built-in LED lighting for a sleek, modern look. LED lights can be customized for brightness and color effects, enhancing the ambiance.
- **Material:** Uses durable tempered or laminated glass for safety and longevity.
- **Energy Efficiency:** Features energy-saving LED technology, reducing maintenance and operational costs.
- **Applications:** Suitable for staircases, balconies, lobbies, outdoor terraces, and more. Ideal for spaces prioritizing openness and unobstructed views.
- **Durability:** Weather-resistant materials make it appropriate for indoor and outdoor use.
- **Customization:** LED settings are adjustable for intensity and hue to suit various design requirements.

Glass Railing Installation Guide

1. Flip the mainframe
2. Insert the drainage pads every 1 foot, and tighten them with a hexagonal screw wrench
3. Flip the main frame back to its original position and Install expansion screws every 1 foot for the inner and outer rows.
- 4.

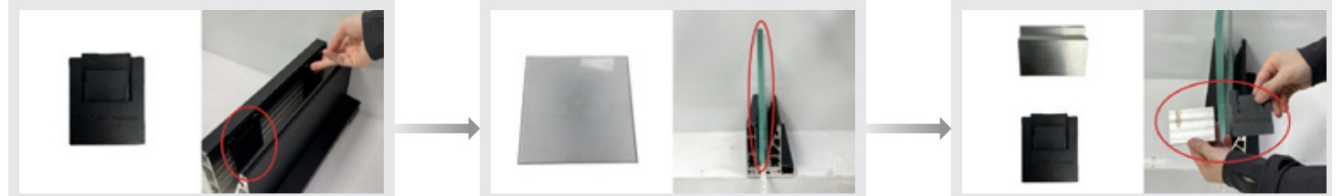


If you need to install an LED light strip, do it at this step with the main LED light strip facing up

5. Add a piece of acrylic every 1 foot.
6. Close the outer cover



7. Paste the glass spacers every 9 inches
8. Put the glass into the main frame
9. Attach the glass spacer to the triangular fixture



10. Put in the triangular fixing components every 9 inches, one by one corresponding to the glass gaskets on the opposite side
11. Insert the hook into the main frame every 9 inches
12. move the hook to the upper end of the fixing assembly and tighten the screw with a hexagonal screwdriver



13. Close the top cover
14. Snap in waterproof strip



FAQs

1. Can the LED lights be controlled remotely?

Yes, most systems include remote controls or apps for adjusting brightness, colors, and effects.

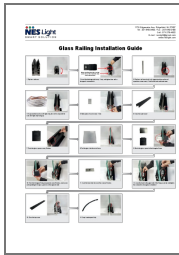
2. Is it easy to clean and maintain?

Yes, the glass panels require standard glass cleaning, and the LED components are designed for long-term use with minimal maintenance.

3. Are the LED lights weatherproof for outdoor use?

Yes, the system is designed to withstand outdoor conditions, making it suitable for terraces, patios, and pool areas.

Documents / Resources



[NES Light Glass Railing With LED Lighting System](#) [pdf] Installation Guide
Light Glass Railing With LED Lighting System, Light Glass, Railing With LED Lighting System, L
ED Lighting System, Lighting System, System

References

- [User Manual](#)

[Manuals+](#), [Privacy Policy](#)

This website is an independent publication and is neither affiliated with nor endorsed by any of the trademark owners. The "Bluetooth®" word mark and logos are registered trademarks owned by Bluetooth SIG, Inc. The "Wi-Fi®" word mark and logos are registered trademarks owned by the Wi-Fi Alliance. Any use of these marks on this website does not imply any affiliation with or endorsement.