



NBD19CC-TX Nerf Board Installation Guide

[Home](#) » [NERF](#) » NBD19CC-TX Nerf Board Installation Guide 

Contents

- [1 NBD19CC-TX Nerf Board Installation](#)
- [2 Product Information](#)
- [3 Product Usage Instructions](#)
- [4 Instructions](#)
- [5 Documents / Resources](#)
 - [5.1 References](#)



NBD19CC-TX Nerf Board Installation



Product Information

Product: Nerf Board

Application: 19-21 RAM 1500 CC

Parts Included:

- Driver Side Running Board (Qty: 1)
- Passenger Side Running Board (Qty: 1)
- Rocker panel brackets (Qty: 6)
- Step Plate (Qty: 4)

Product Usage Instructions

- **Step 1:** Identify Driver Side Nerf board.
DRIVER 12302 Shiloh Church Rd. Houston TX 77066 Phone (281) 880-6322 – Fax (281) 880-6325
- **Step 2:** Install the supplied step plate (x2) to each running board.
Using the M6x20mm button head bolts, M6 nuts, and M6 flat washers, securely attach the step plate to each Running Board. Do not over-tighten.
- **Step 3:** Install the supplied rocker panel brackets (x6) to attachment points located on the backside of the main tube. Using the supplied 3/8×1 carriage bolts and 3/8 flanged nuts, attach the rocker panel brackets to the attachment points on the backside of the main tube. Leave them finger-tight for now. Note that the mounting bracket should be positioned forward on the tube attachment with the threaded part of the bolt facing toward the rear of the vehicle.
- **Step 4:** Clean the three attachment points on the inside rocker panel.
On the inside rocker panel, there will be three attachment points consisting of three 8mm studs. Clean these studs before installation, as they may be covered in paint.
- **Step 5:** Install the step assembly to the three factory attachment points. With the help of an additional person, carefully attach the step assembly to the three factory attachment points using the provided M8 flanged hex nuts. Leave them finger tight for now.
- **Step 6:** Level Nerf board.
Ensure that the Nerf board is level before proceeding.
- **Step 7:** Repeat steps 4-6 for the passenger side.
- Follow steps 4-6 to install the Nerf board on the passenger side of the vehicle.

PASSG DRIVER

12302 Shiloh Church Rd. Houston TX 77066 Phone (281) 880-6322 – Fax (281) 880-6325

ROAN

RUNNING BOARD



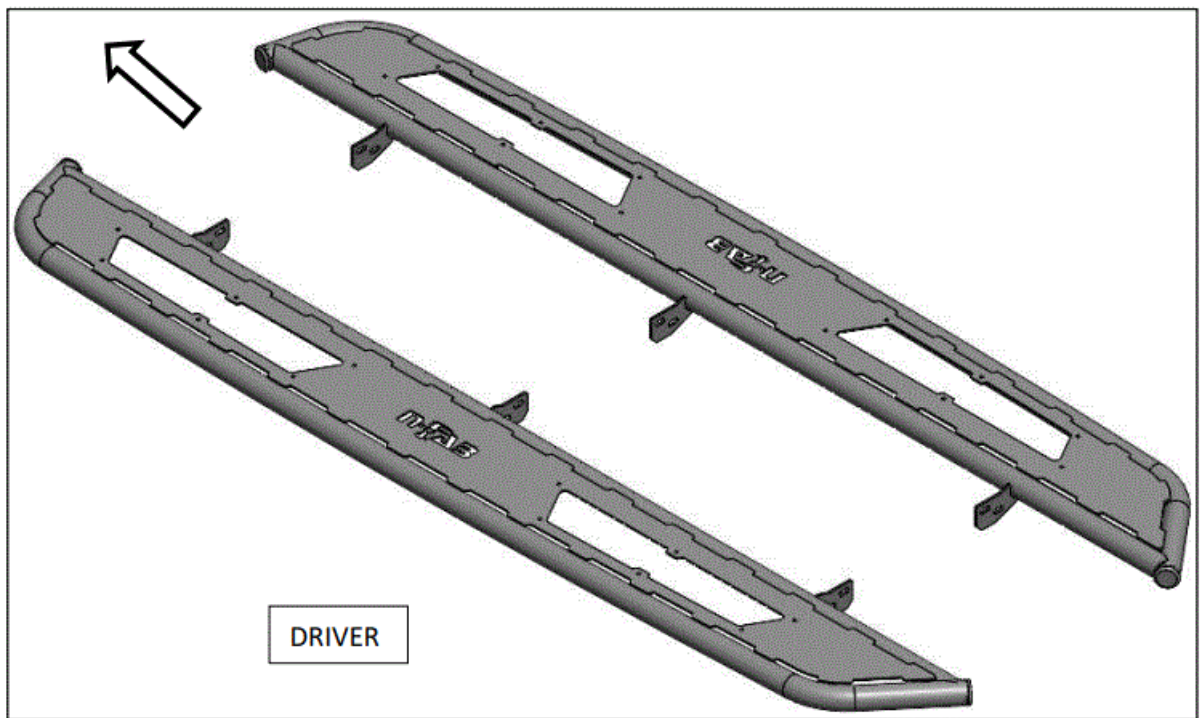
| HWKT-09617X | | QTY |
|--------------|--|-----|
| BHCS- 09591X | M6X16MM BUTTON HEAD CAP SCREW | 24 |
| FW-09601 | M6 FLAT WASHER | 24 |
| BHCS-09603 | M6 flanged nut | 24 |
| CARB-09609 | 3/8"-16X1" Gr 5 Steel Carriage Bolt 1000B BLACK ZINC | 12 |
| FLNT-00664 | 3/8-16 GRADE 8 STEEL FLANGE NUT, ZINKLAD 1000B | 12 |

| HWKT-00031X | | QTY |
|-------------------------|--|-----|
| M8-1.25 HEX FLANGED NUT | | 18 |
| M8 FLAT WASHER | | 18 |

| PARTS INCLUDED | QTY |
|------------------------------|-----|
| Driver Side Running Board | 1 |
| Passenger Side Running Board | 1 |
| Rocker panel brackets | 6 |
| Step Plate | 4 |

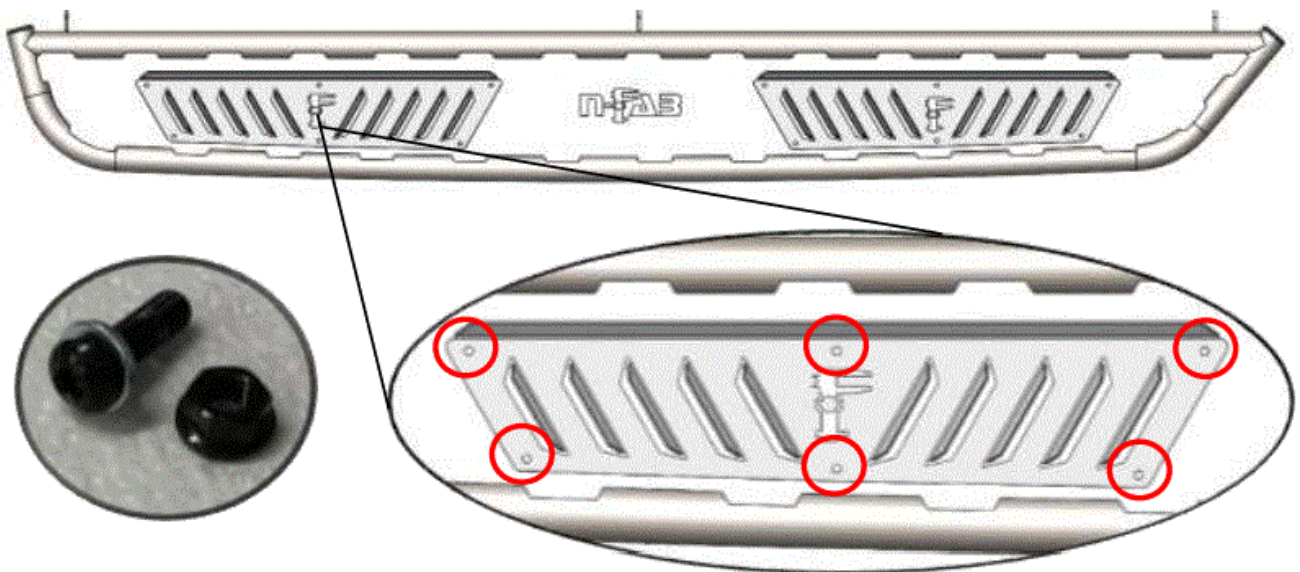
Instructions

- **Step 1:** Identify Driver Side Nerf board.

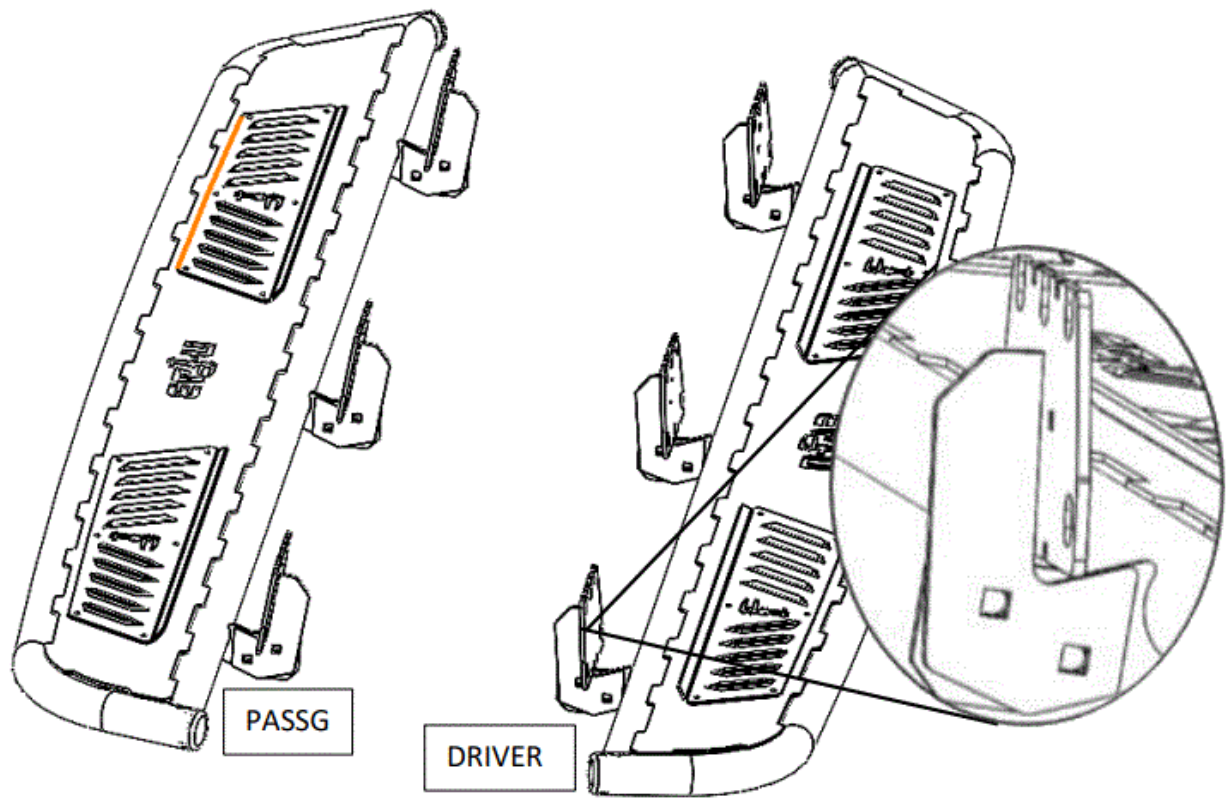


- Step 2: Install the supplied step plate (x2) to each Running Board using the M6x20mm button head bolts, M6 nuts and M6 flat washer.

**** DO NOT OVER TIGHTEN ****



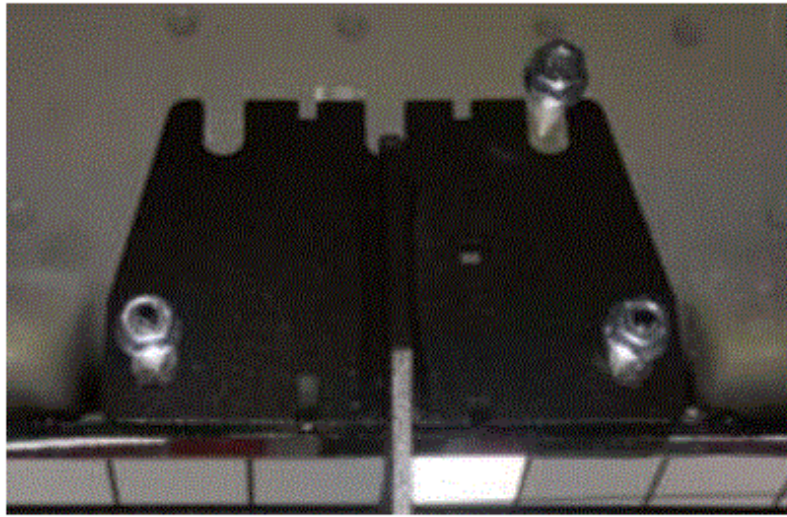
- **Step 3:** Install the supplied rocker panel brackets (x6) to the attachment points located on the backside of the main tube (Driver/Passg) using the supplied 3/8"x 1" carriage bolts and 3/8" flanged nuts. Leave your finger tight for now. *** NOTE: The mounting bracket will mount forward on the tube attachment with the threaded part of the bolt facing toward rear of the vehicle



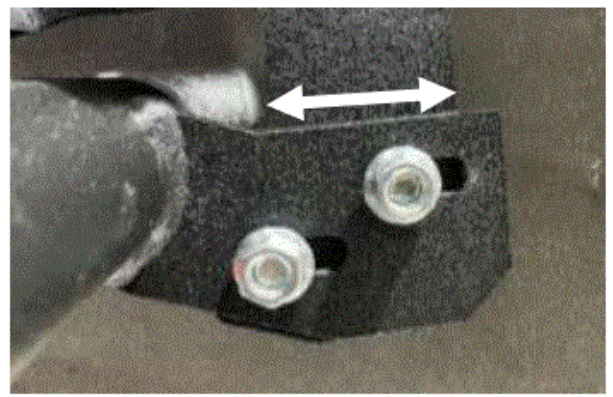
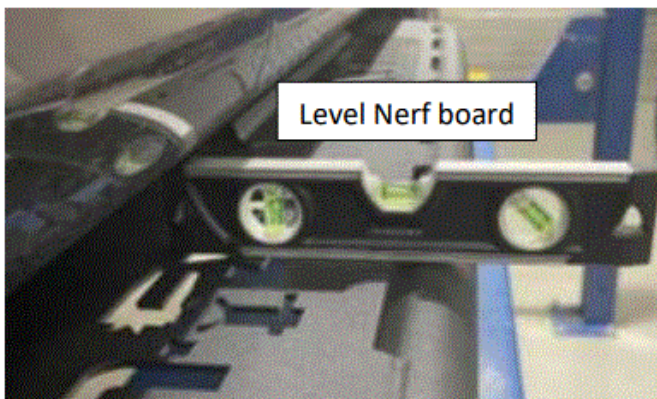
- **Step 4:** On the inside Rocker panel there will be three attachment points consisting of three 8mm studs coming out from the panel. These studs may be covered in paint and will need to be cleaned before the installation.



- **Step 5:** An additional person is recommended for this step. Carefully install the step assembly to the three factory attachment points using the provided M8 flanged hex nuts. Leave your finger tight for now.




- **Step 6:** There will be ½” of adjustment in the (x3) mounting bracket. Adjust to desired position and tighten to (20 ft./lbs). Then tighten body mount brackets to (17-20 ft./lbs)



- **Step 7:** Repeat steps 4-6 for the passenger side.

Documents / Resources

| | |
|---|---|
|  | <p>NERF NBD19CC-TX Nerf Board [pdf] Installation Guide NBD19CC-TX Nerf Board, NBD19CC-TX, Nerf Board, Board</p> |
|---|---|

References

- [User Manual](#)