



Neomounts FPMA-D700DD Monitor Desk Mount Specifications and Datasheet

[Home](#) » [Neomounts](#) » Neomounts FPMA-D700DD Monitor Desk Mount Specifications and Datasheet 

Contents

- [1 Neomounts FPMA-D700DD Monitor Desk Mount](#)
- [2 SPECIFICATIONS](#)
- [3 Description](#)
- [4 Dimensions Overview](#)
- [5 User Support](#)
- [6 FAQ's](#)
- [7 Related Posts](#)

Neomounts®

Neomounts FPMA-D700DD Monitor Desk Mount



SPECIFICATIONS

GENERAL

- **Min. screen size*** 19 inch
- **Max. screen size*** 30 inch
- **Min. weight** 0 kg (per screen)
- **Max. weight** 8 kg (per screen)
- **Screens** 2
- **VESA minimum** 75×75 mm
- **VESA maximum** 100×100 mm
- **Desk mount** Grommet Stand

FUNCTIONALITY

- **Type**
 - Full motion
 - Tilt
 - Rotate
 - Swivel
- **Height adjustment** 34-44 cm
- **Width adjustment** 52-83 cm
- **Depth adjustment** 15 cm
- **Tilt (degrees)** 180°
- **Swivel (degrees)** 180°
- **Rotate (degrees)** 360°
- **Adjustment type** Manual

INFORMATION

- **Color** Black
- **Main material** Steel
- **Warranty** 5-year
- **EAN code** 8717371442507

Please note: The inch sizes stated are just an indication, combined with the weight and VESA sizes. The maximum weight and VESA size are absolute restrictions for the products and should not be exceeded.

Description

Neomounts by Newstar Tilt/Turn/Rotate Dual Desk Stand for two 19-30" Monitor Screens, Height Adjustable – Black

The Neomounts by Newstar desk mount, model FPMA-D700DD is a tilt-, swivel, and rotatable desk mount for 2 flat screens up to 30". This mount is a great choice for space-saving placement on desks using a desk stand or grommet mount.

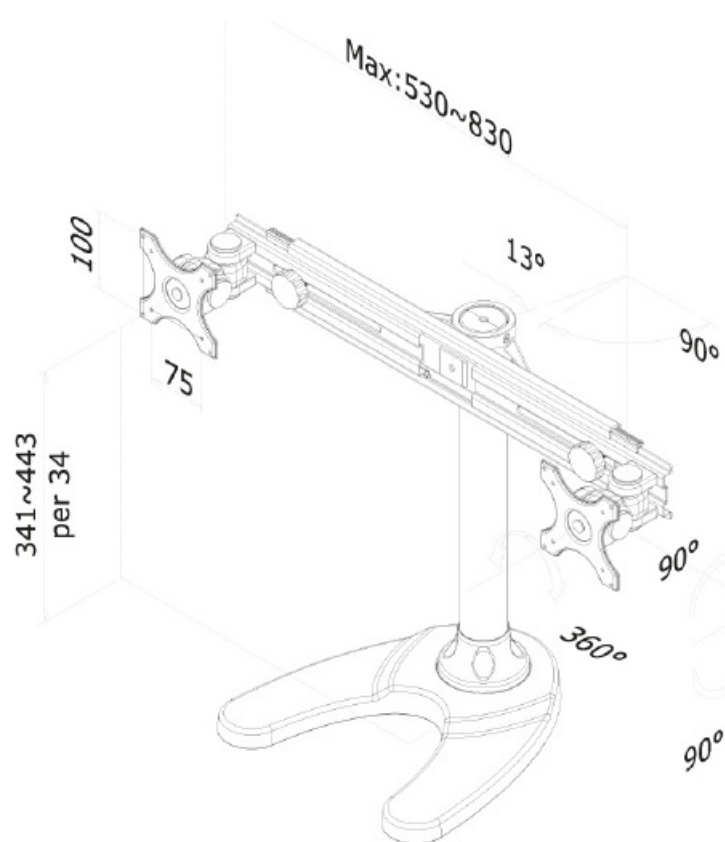
Neomounts by Newstar's versatile tilt (180°), rotate (360°) and swivel (180°) technology allows the mount to change to any viewing angle to fully benefit from the capabilities of the flat screen. Depth 15 centimeters. Innovative cable management conceals and routes cables from mount to flat screen. Hide your cables to keep the workplace nice and tidy.

Neomounts by Newstar FPMA-D700DD has two pivot points and is suitable for screens up to 30" (76 cm). The weight capacity of this product is 8 kg for each screen. The desk mount is suitable for screens that meet VESA hole patterns 75x75 or 100x100mm. Different hole patterns can be covered using Neomounts by Newstar VESA adapter plates. By using an ergonomic mount neck- and back complaints can be avoided. Ideal for use in offices and on counters or in a reception area.

All installation material is included with the product.

Dimensions Overview

FPMA-D700DD NEOMOUNTS BY NEWSTAR MONITOR DESK



User Support

- **Address:** Neomounts Computer Products Europa B.V. | Wateringweg 62 | 2031 EJ Haarlem | The Netherlands
- **Contact no.** +31 (0)23-5478888
- **Support:** info@neomounts.com
- **Email:** www.neomounts.com

FAQ's

Do monitor mounts work for every monitor?

Yes, all monitors can be mounted. The vast majority of monitors today come with a mounting plate on the back, which makes it extremely easy to use popular monitor mounting products. Even older monitors or old CRTs that don't have this setup can still be mounted.

How thick should the desk be for the monitor mount?

Most commercial-grade office furniture desktops of 24 mm thickness will be fine. Commercial desktops of 12 mm thickness are usually OK as well, for single mounts only. Clamp jaws can usually open up to 50 mm in width. If your table is thicker than 50 mm you may have to consider a through mount or a wall mount.

How do monitor desk mounts work?

A monitor arm is a somewhat robotic-looking arm that attaches to your desk, wall, or ceiling and raises your monitor to your personal ideal height. It adjusts easily according to your working style — whether you stand, sit, or do a mix of both throughout the day.

Where should a monitor mount be placed on a desk?

Tips to Position Your Monitor Arms
Keep the Screen Your Eye Level. When positioning the monitor arm, make sure to alter the screen position so that the top 1/3 of the screen is at your eye level.
Centre the Computer. Keep the Screen at Arm's Length from You.
Tilt Your Screen Backward to Avoid Glare.

How do you mount a monitor arm without damaging a desk?

Try clamping a board between the monitor arm base and the desktop. It distributes the force more evenly, thus reducing the risk of deformation. If you'd like to forego the clamp altogether, the monitor arm can also mount through one of the pre-drilled grommet holes.

What is the purpose of the monitor mount?

A monitor mount is a strong but flexible ergonomic arm that supports your monitors. While traditional monitor stands hold your monitor in a stationary, locked position, a monitor mount allows you to move and adjust the height, angle, or position of your monitor.

How do monitor arms attach to the desk?

Most arms will attach to your desktop with a clamp or a grommet hole adapter. Always make sure that your desktop's thickness and/or grommet hole diameter will be compatible with the wall or desk monitor arm you choose.

What is the difference between a monitor stand and an arm?

When placing monitors on your desk withstands instead of arms, they take up tons of space on the back of your desk, especially when you're using more than one monitor. In comparison, having monitor arms allows you to utilize the space on the back of your desk while your monitors are mounted safely above your desk.

Do monitor mounts save space?

Unlike the stand that comes with most monitors, a monitor arm provides flexibility to position your screen exactly where you want it for proper ergonomics and comfort. It can also free up space on your desk and help your workspace look neater.

Are monitor wall mounts safe?

As long as the wall mount and the monitor are perfectly attached to each other along the wall, they are completely safe.

Are all monitor stands the same?

The first thing you need to consider is whether a stand is compatible with the monitor(s) you want to use it with. Every monitor stand has different screen sizes and weight limits that need to be adhered to. Making sure your monitor does not exceed these limits is very important!

Do monitor mounts include screws?

Yes! It also comes with all tools you need to mount to the edge of a table or an existing hole in a table/desk. If you need to make a new hole, you will need to supply your own drill and bit (or plug router and bit).

Download this PDF Link: [Neomounts FPMA-D700DD Monitor Desk Mount Specifications and Datasheet](#)

Manuals+.