

Neomounts DS15-640WH1 Table Support for Tablets Instruction Manual

[Home](#) » [Neomounts](#) » Neomounts DS15-640WH1 Table Support for Tablets Instruction Manual 



Contents

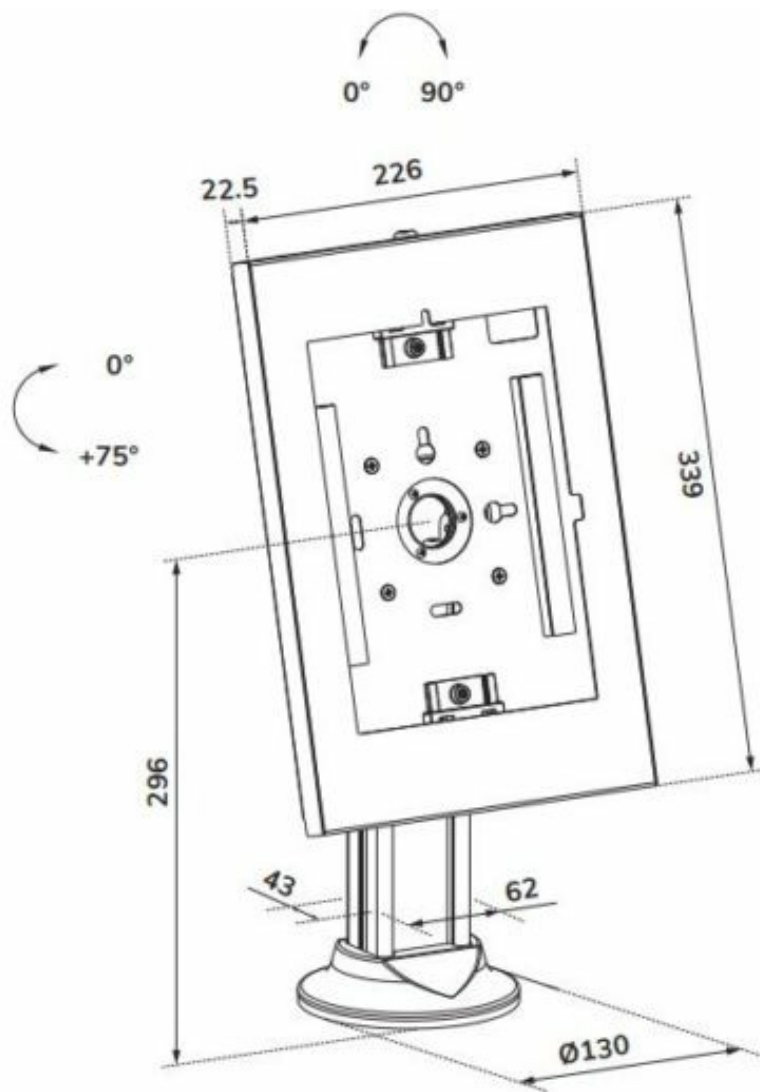
- [1 Neomounts DS15-640WH1 Table Support for Tablets Instruction Manual](#)
- [2 Tablet stand](#)
- [3 PARTS](#)
- [4 Assembly](#)
- [5 Documents / Resources](#)
 - [5.1 References](#)

Neomounts DS15-640WH1 Table Support for Tablets Instruction Manual

Neomounts DS15-640WH1 Table Support for Tablets.webp

DS15-640WH1

Tablet stand



Measuring unit: mm

PARTS



A. (x1)



B. (x1)



C. (x1)



D. (x1)



E. (x1)



F. (x1)



G. (x1)



H. (x1)



I. (x1)



J. (x1)



K. (x4)



L. (x4)



M. (x1)



N. M4x12
(x4)



O. M5x6
(x4)



P. M8x20
(x4)



Q. M8x45
(x1)



R. (x1)



S. 4mm
(x1)

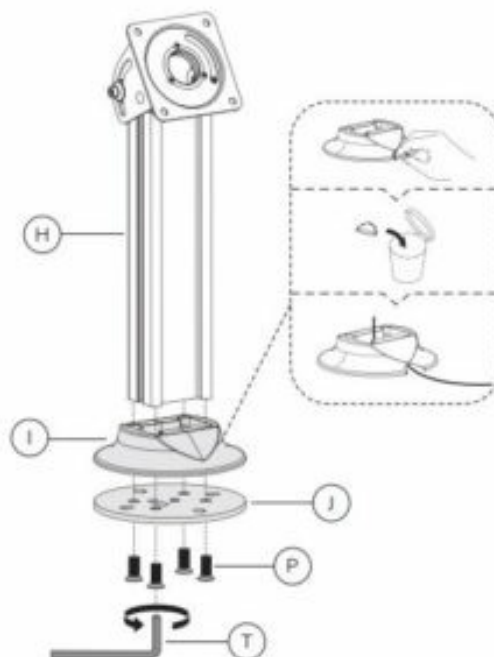


T. 5mm
(x1)

Assembly

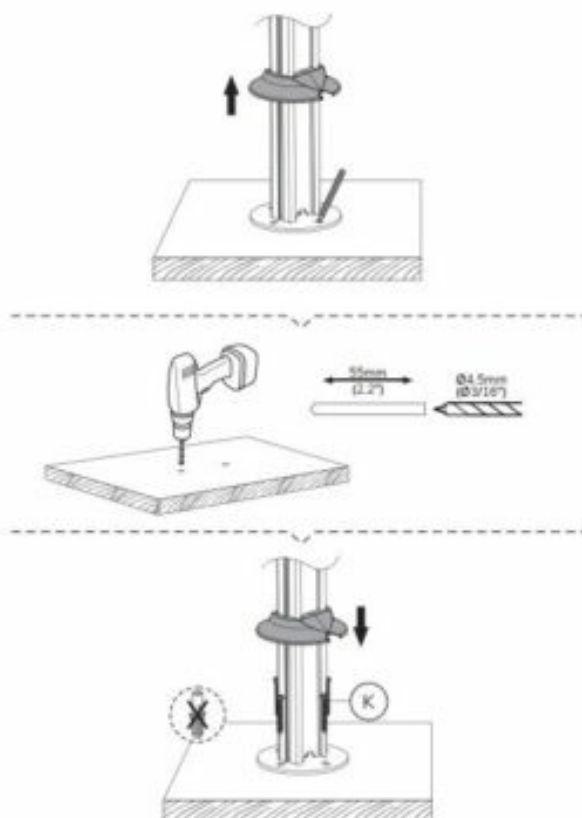
STEP 1

- EN Attach the support to the base
- NL Bevestig de steun aan de voet
- DE Befestigen Sie die Halterung an der Basis
- FR Fixer le support à la base
- IT Fissare il supporto alla base
- ES Fijar el soporte a la base
- PT Fixar o suporte à base
- PL Przymocuj wspornik do podstawy



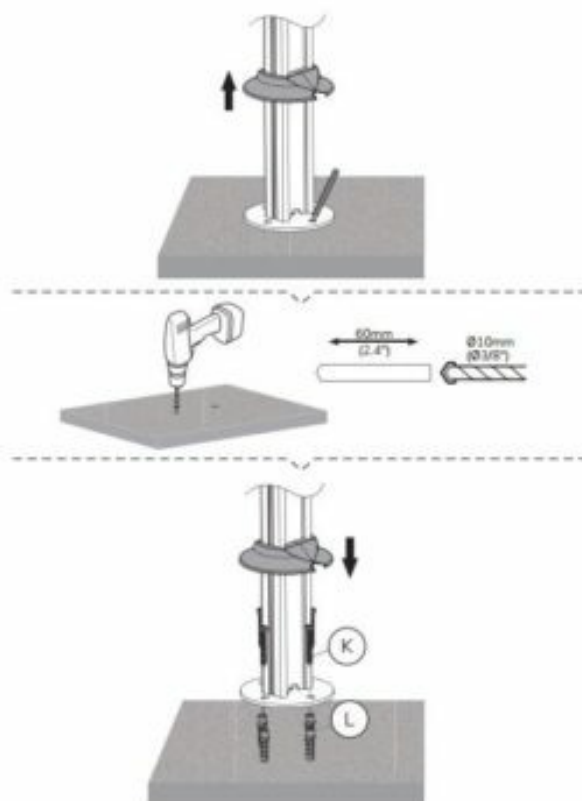
STEP 2 A

- EN Attach the support on a wooden countertop
- NL Installeer de steun op een houten werkblad
- DE Montieren Sie die Halterung auf einer Holzarbeitsfläche
- FR Installer le support sur une surface en bois
- IT Installare il supporto su una superficie di legno
- ES Instale el soporte sobre una superficie de madera
- PT Instalar o suporte numa superfície de madeira
- PL Zamontuj uchwyt na drewnianej powierzchni



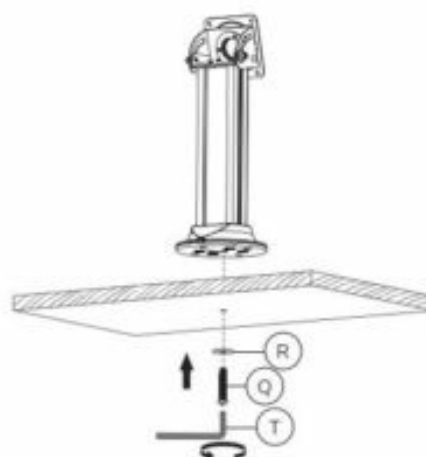
STEP 2 B

- EN Install the support on a concrete or solid brick countertop
- NL Installeer de steun op een betonnen of stevig stenen werkblad
- DE Installieren Sie die Halterung einer Beton- oder Vollstein-arbeitsplatte
- FR Installer le support sur une surface en béton ou en briques pleines
- IT Installare il supporto su una superficie in cemento o in mattoni pieni
- ES Instale el soporte sobre una superficie de hormigón o ladrillo macizo
- PT Instalar o suporte sobre uma superfície de betão ou tijolo maciço
- PL Zamontować wspornik na betonowej lub ceglanej powierzchni



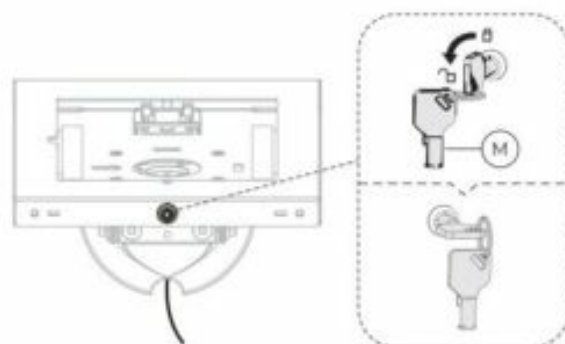
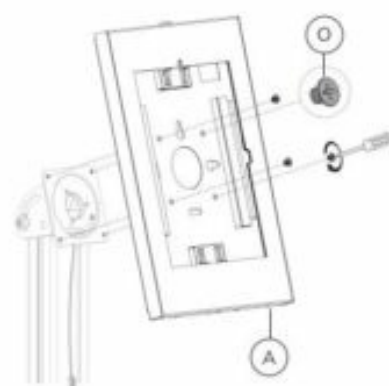
STEP 2 C

- EN Install the support on the countertop
- NL Installeer de steun op het werkblad
- DE Montieren Sie den Halterung an die Arbeitsfläche
- FR Installer le support sur la surface
- IT Installare il supporto sulla superficie
- ES Instale el soporte en la superficie
- PT Instalar o suporte na superfície
- PL Zainstaluj wspornik na powierzchni



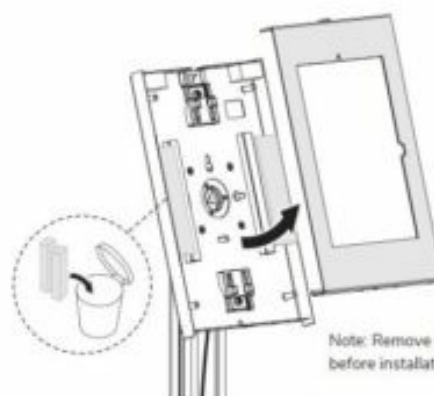
STEP 3

- EN Attach the tablet holder to the mount
- NL Bevestig de tablethouder aan de steun
- DE Befestigen Sie den Tablet-Halter an der Halterung
- FR Fixer le porte-tablette au support
- IT Fissare il portatablet al supporto
- ES Fijar el porta tablet al soporte
- PT Fixar o porta tablet no suporte
- PL Przymocuj uchwyt tabletu do uchwyty



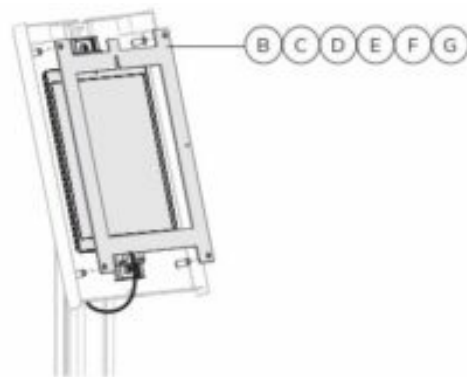
STEP 4

- EN Remove the cover and place the tablet in the holder
- NL Verwijder de afdekkap en plaats de tablet in de houder
- DE Entfernen Sie die Abdeckung und legen Sie das Tablet in die Halterung
- FR Retirez le capuchon et placez la tablette dans le support
- IT Rimuovere le coperte e posiziona il tablet nel supporto
- ES Retire la tapa de la cubierta y coloque la tableta en el soporte
- PT Remova a tampa e coloque o tablet no suporte
- PL Zdejmij osłonę i umieść tablet w uchwycie

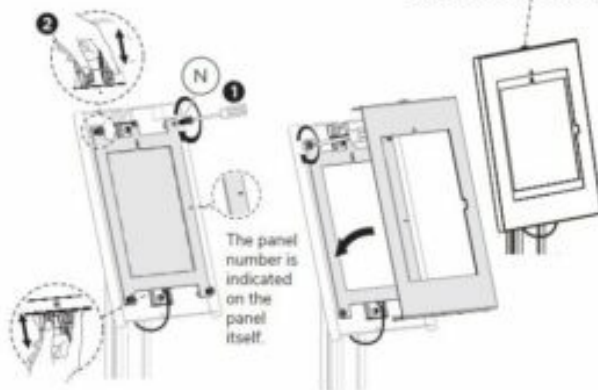
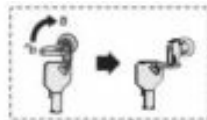


Note: Remove foam parts before installation.





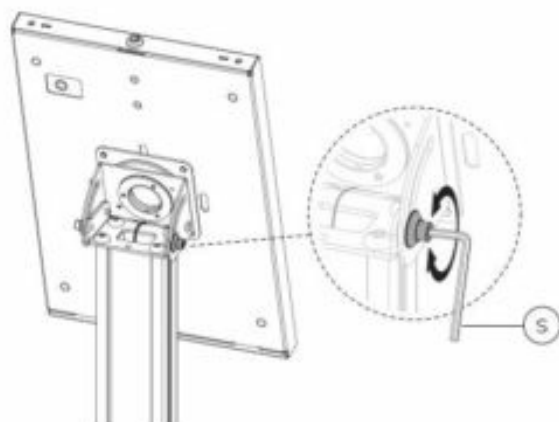
Attach the panel to the holder using 4 screws (N). Adjust the two claws, before completely tightening the screws, to hold the tablet and to ensure the screen is aligned and visible through the front panel.



Choose the corresponding panel according to the tablet:
 Panel 1: For 9.7" iPad 5/6, iPad Air 1/2 & iPad Pro (Gen 1)
 Panel 2: For 10.2" iPad 7/8/9 & 10.5" iPad Air 3, iPad Pro (Gen 2)
 Panel 3: For 11" iPad Pro (Gen 3/4/5) & 10.9" iPad 10, iPad Air 4
 Panel 4: For 10.4" Samsung Galaxy Tab A7
 Panel 5: For 10.1" Samsung Galaxy Tab A
 Panel 6: For 10.4" Samsung Galaxy Tab S6 Lite

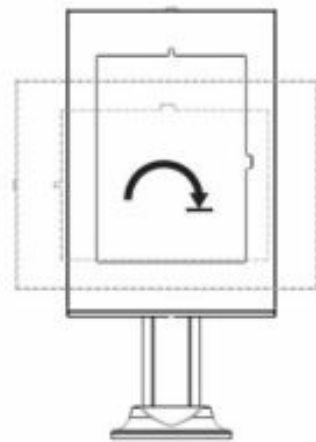
STEP 5

- EN Adjust the torque
- NL Stel het koppel in
- DE Einstellen des Drehmoments
- FR Réglez les couples
- IT Regolazione della coppia
- ES Ajuste el tornillo
- PT Ajustar os parafusos
- PL Dostosuj siłę docisku regulacji



STEP 6

- EN Adjust the mount to the desired position
NL Stel de steun in op de gewenste positie
DE Stellen Sie die Halterung auf die gewünschte Position ein
FR Ajustez le support à la position souhaitée
IT Regolare il supporto nella posizione desiderata
ES Ajuste el soporte a la posición deseada
PT Ajuste o suporte na posição desejada
PL Dostosuj pozycję uchwyty do twoich wymagań



CAUTION

1. To ensure safety, please read this manual carefully before installation and follow the instructions. Store this manual in a secure place for future reference.
2. The manufacturer shall not be legal y responsible for any equipment damage or personal injury caused by incorrect installation or operation Other than that covered in this manual.
3. The mount is designed for easy installation and removal. The manufacturer shall not be liable for damage to equipment or personal injuries arising Out Of human factors or acts Of nature, such as earthquake or typhoon.
4. It is recommended that the mount be installed by qualified personnel only.
5. At least two persons are needed to install or remove the product to avoid hazard of falling objects.
6. Please carefully inspect the area where the mount is to be installed:
 - AVOId places that are subject to high temperatures. humidity or contact With water.
 - DO not install the product near air conditioning vents or areas with excess dust and fumes.
 - Only install on vertical walls and avoid slanted surfaces.
 - Do not install in places subject to any shock or vibration.
 - Do not install in places subject to direct exposure to bright light, as it may cause eye fatigue when viewing the

display panel.

7. Maintain sufficient space around the display to ensure adequate ventilation.
8. To ensure safe installation. first check the Structure Of the wall. ceiling or floor and select a secure mounting location.
9. The wall, ceiling or floor should be strong enough to sustain a weight of at east four times of the display and mount combined. The mounting location must be able to withstand earhquake or other strong shock.
10. Do not modify any accessories or use broken parts. Contact your dealer with any questions.
11. Tighten all screws (do not exert excessive force to avoid breaking the screw or damaging its thread).
12. Drill holes and bolts Will be left in the wall, ceiling or floor once the display and bracket are removed. Stains may occur after extended use.
13. Since the manufacturer has no way to control the wall. ceiling Or floor type and installation Of the mount. the warranty Of the product shall only cover the body Of the mount. The warranty per'od
14. Of the product 's 5 years.

Please consult the English language manual for any dispute on conditions.

Read More About This Manual & Download PDF:

Documents / Resources

	<p>Neomounts DS15-640WH1 Table Support for Tablets [pdf] Instruction Manual DS15-640WH1 Table Support for Tablets, DS15-640WH1, Table Support for Tablets, Support fo r Tablets, Tablets</p>
---	--

References

- [N Neomounts](#)
- [User Manual](#)

[Manuals+](#), [Privacy Policy](#)

This website is an independent publication and is neither affiliated with nor endorsed by any of the trademark owners. The "Bluetooth®" word mark and logos are registered trademarks owned by Bluetooth SIG, Inc. The "Wi-Fi®" word mark and logos are registered trademarks owned by the Wi-Fi Alliance. Any use of these marks on this website does not imply any affiliation with or endorsement.