


Neomounts DS15-630WH1 Table Stand



Neomounts DS15-630WH1 Table Stand Instruction Manual

[Home](#) » [Neomounts](#) » Neomounts DS15-630WH1 Table Stand Instruction Manual 

Contents

- 1 Neomounts DS15-630WH1 Table Stand
- 2 Product Information
- 3 Product Usage Instructions
- 4 PARTS
- 5 INSTALLATION INSTRUCTION
- 6 DIMENSION
- 7 SAFETY WARNINGS
- 8 Documents / Resources
 - 8.1 References

Neomounts[®]

Neomounts DS15-630WH1 Table Stand



Product Information

Specifications:

- **Model:** DS15-630WH1
- **Measuring Unit:** mm
- **Website:** www.neomounts.com

Product Usage Instructions

Step 1: Assembly of Parts

1. Gather all parts listed in the manual.
2. Remove foam parts before installation.

Step 2: Mounting on the Wall or Countertop

- **Wall Mounting:**

1. Attach the holder to the mount.
2. Choose the appropriate panel according to your tablet model.
3. Attach the panel to the holder using 4 screws (K).
4. Adjust the two claws to hold the tablet and align the screen.

- **Countertop Mounting:**

1. Attach adhesive pads to the base.
2. Place the mount on a countertop.

Step 3: Final Adjustments

Before locking the case, ensure the camera is visible through the slot as shown in the manual.

Frequently Asked Questions (FAQ)

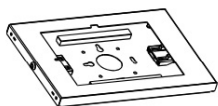
- **Q: How do I choose the correct panel for my tablet?**

A: Refer to the provided information to select the panel that corresponds to your tablet model.

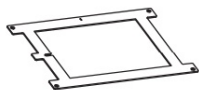
- **Q: Can I use this mount for any tablet?**

A: The mount is designed for specific tablet models as indicated in the manual. Please choose the appropriate panel for your tablet.

PARTS



A. (x1)



B. (x1)



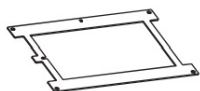
C. (x1)



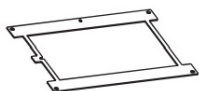
D. (x1)



E. (x1)



F. (x1)



G. (x1)



H. (x1)



I. (x4)



J. (x1)



K. M4x12
(x4)



L. M5x6
(x4)



M. (x3)

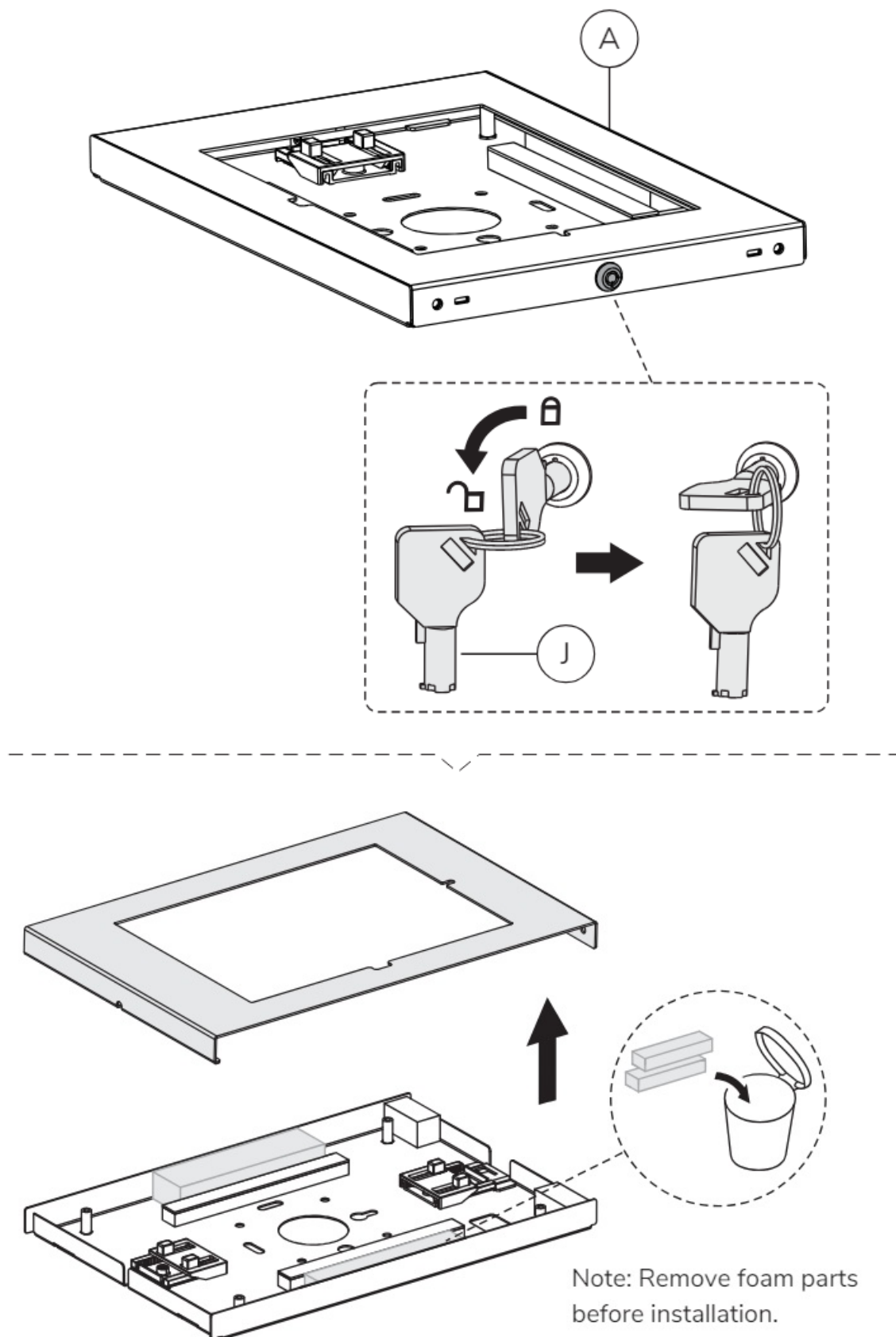


N. (x3)

INSTALLATION INSTRUCTION

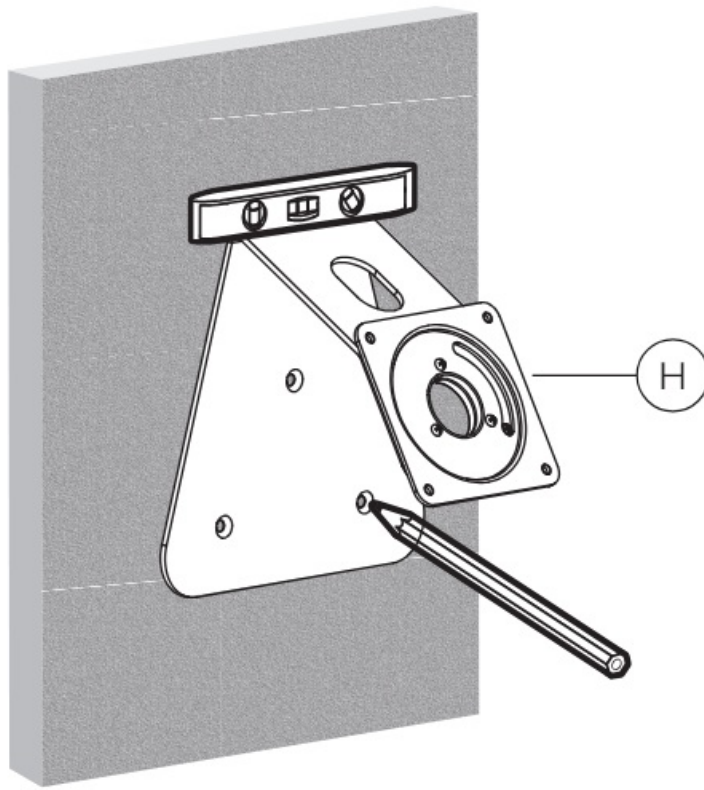
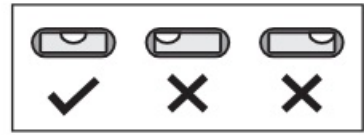
- **STEP 1**

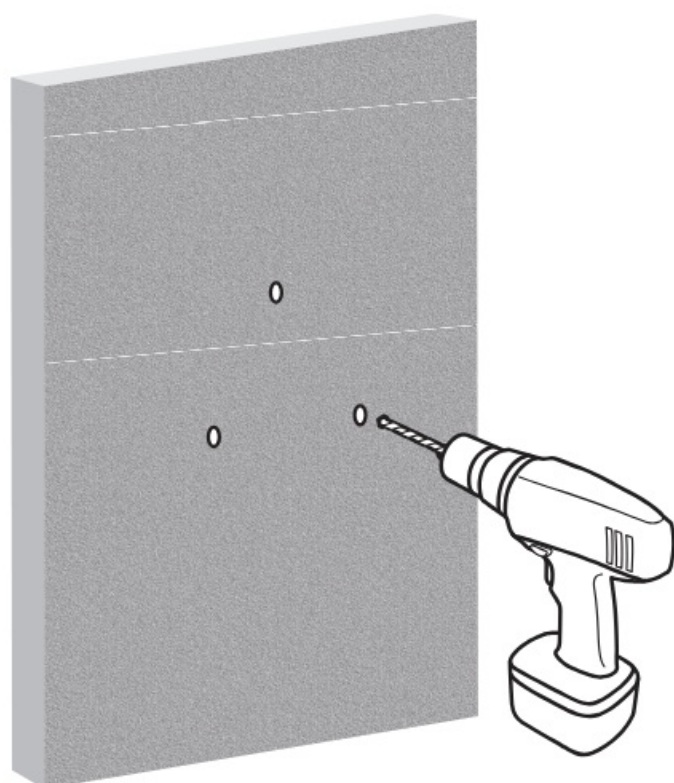
Unlock the holder

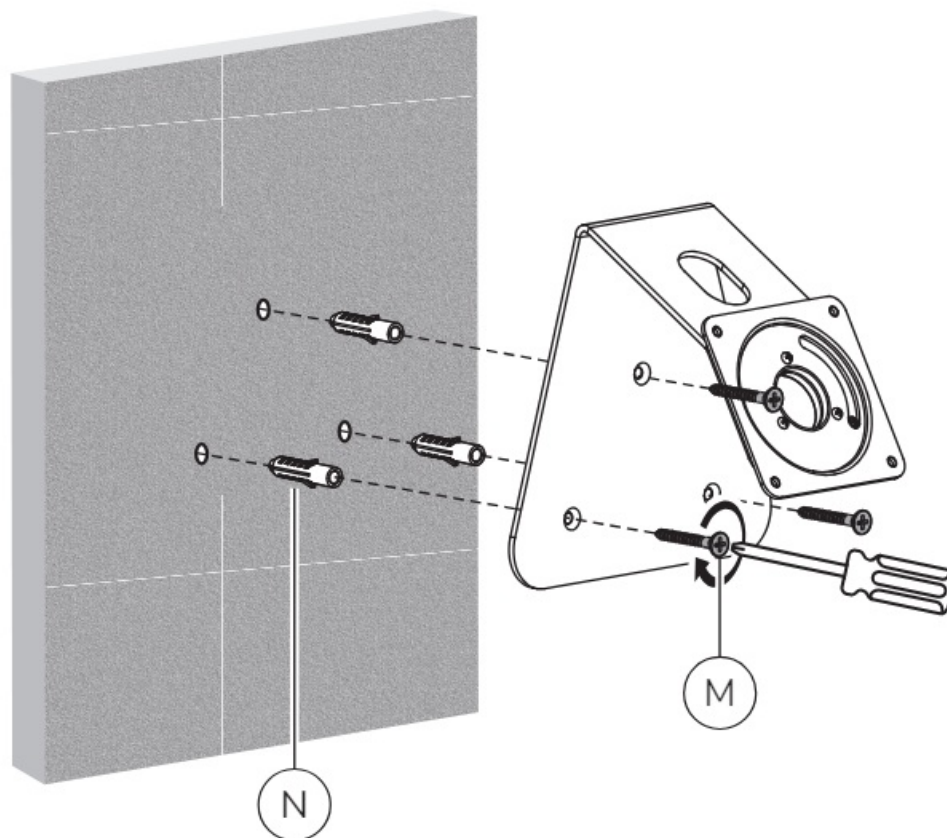


- **STEP 2 A-1 Wall**

Install the holder on a solid wall

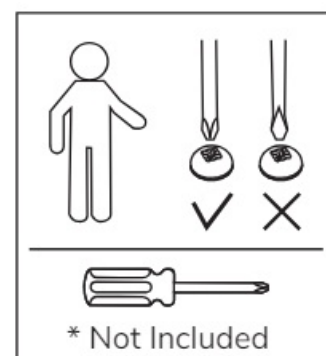
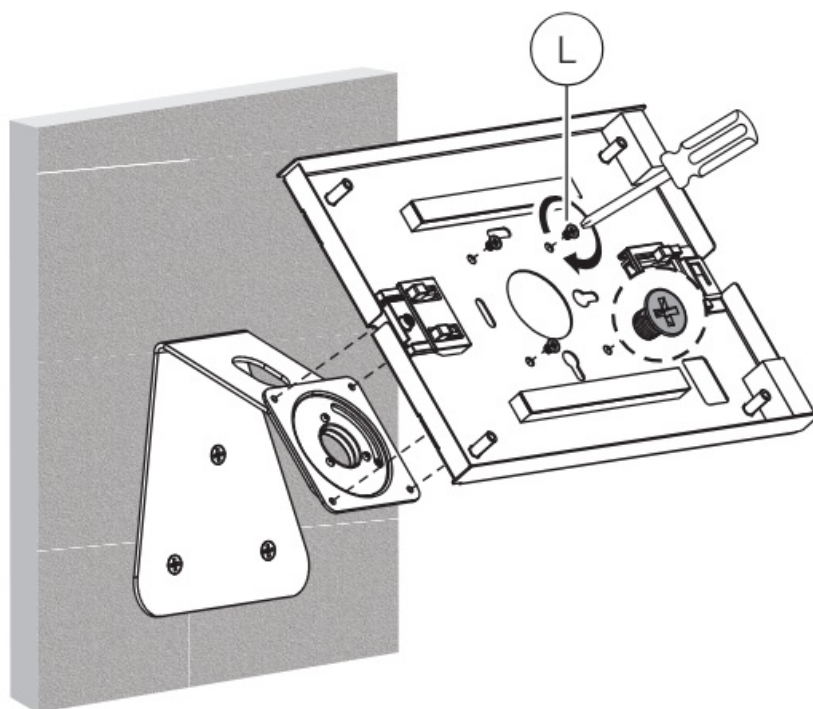


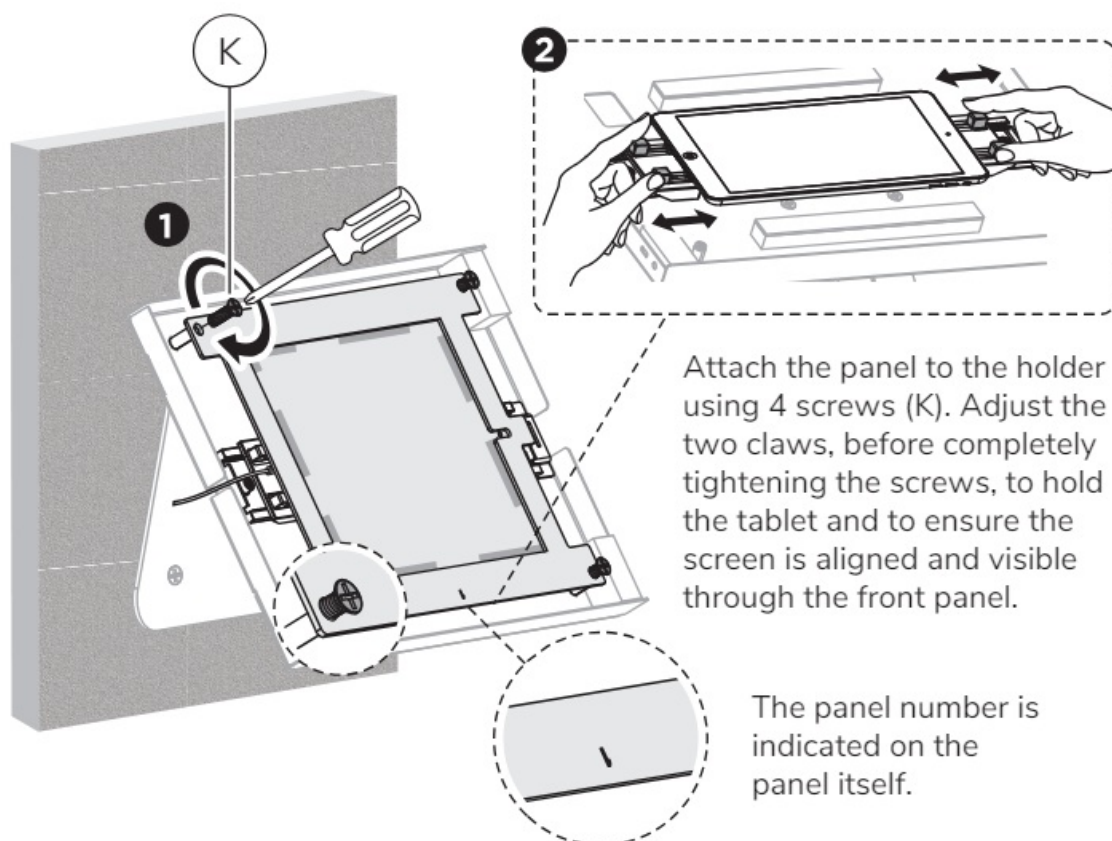
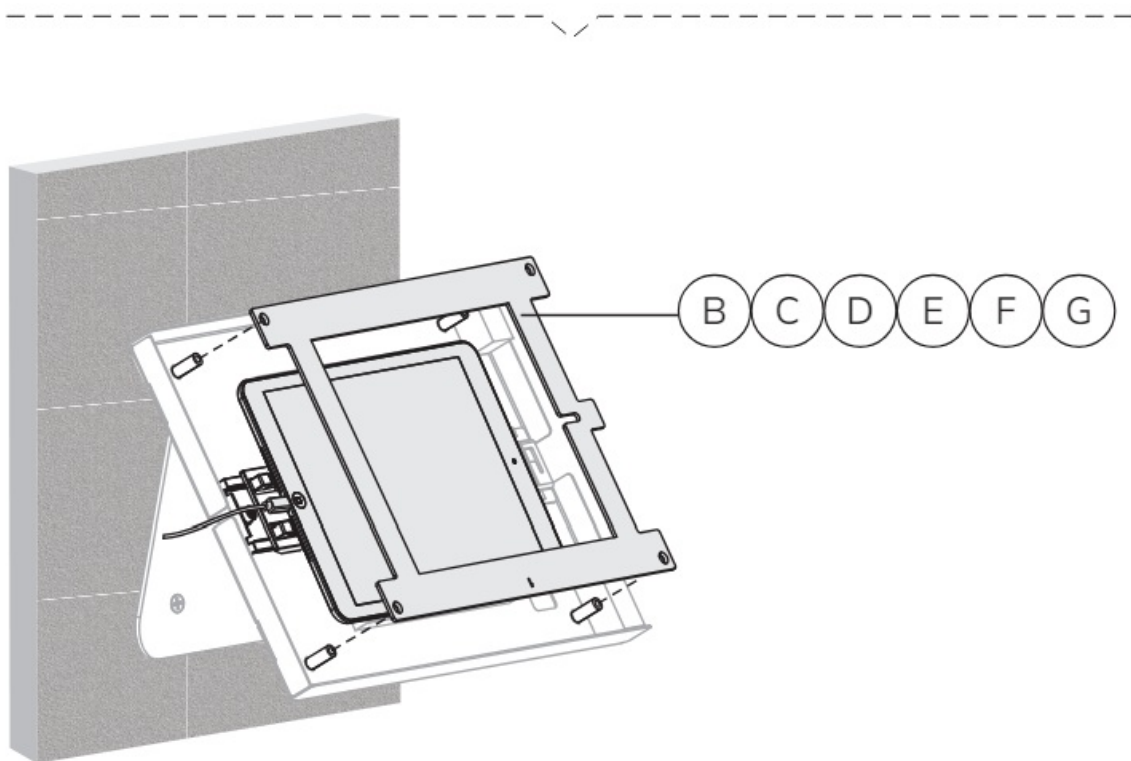




- **STEP 2 A-2 Wall**

Attach the holder to the mount and place the tablet





Choose the corresponding panel according to the tablet:

Panel 1: For 9.7" iPad 5/6, iPad Air 1/2 & iPad Pro (Gen 1)

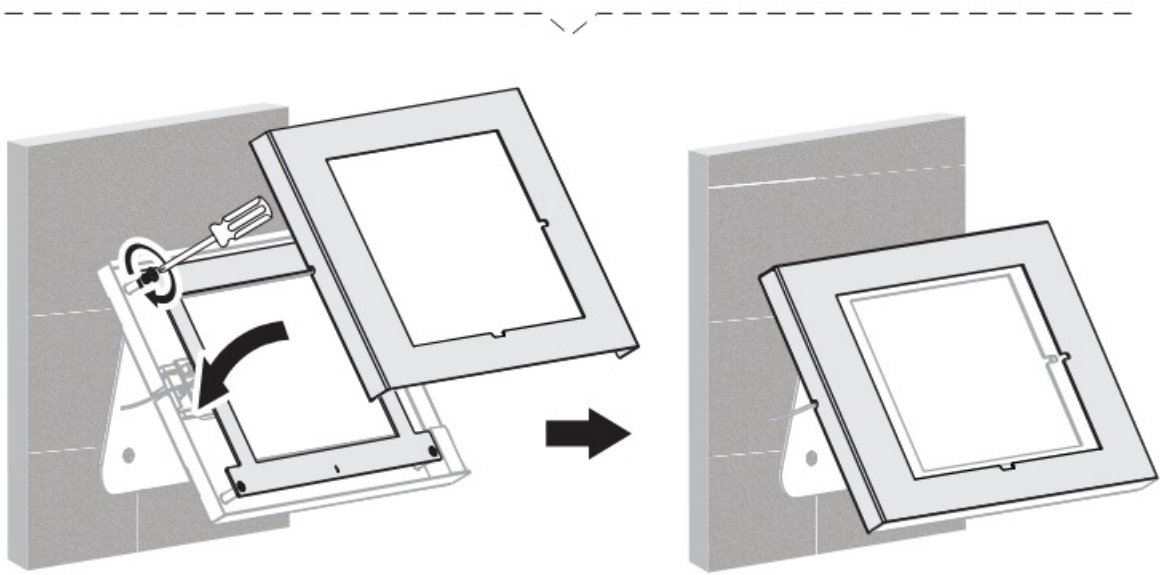
Panel 2: For 10.2" iPad 7/8/9 & 10.5" iPad Air 3, iPad Pro (Gen 2)

Panel 3: For 11" iPad Pro (Gen 3/4/5) & 10.9" iPad 10, iPad Air 4

Panel 4: For 10.4" Samsung Galaxy Tab A7

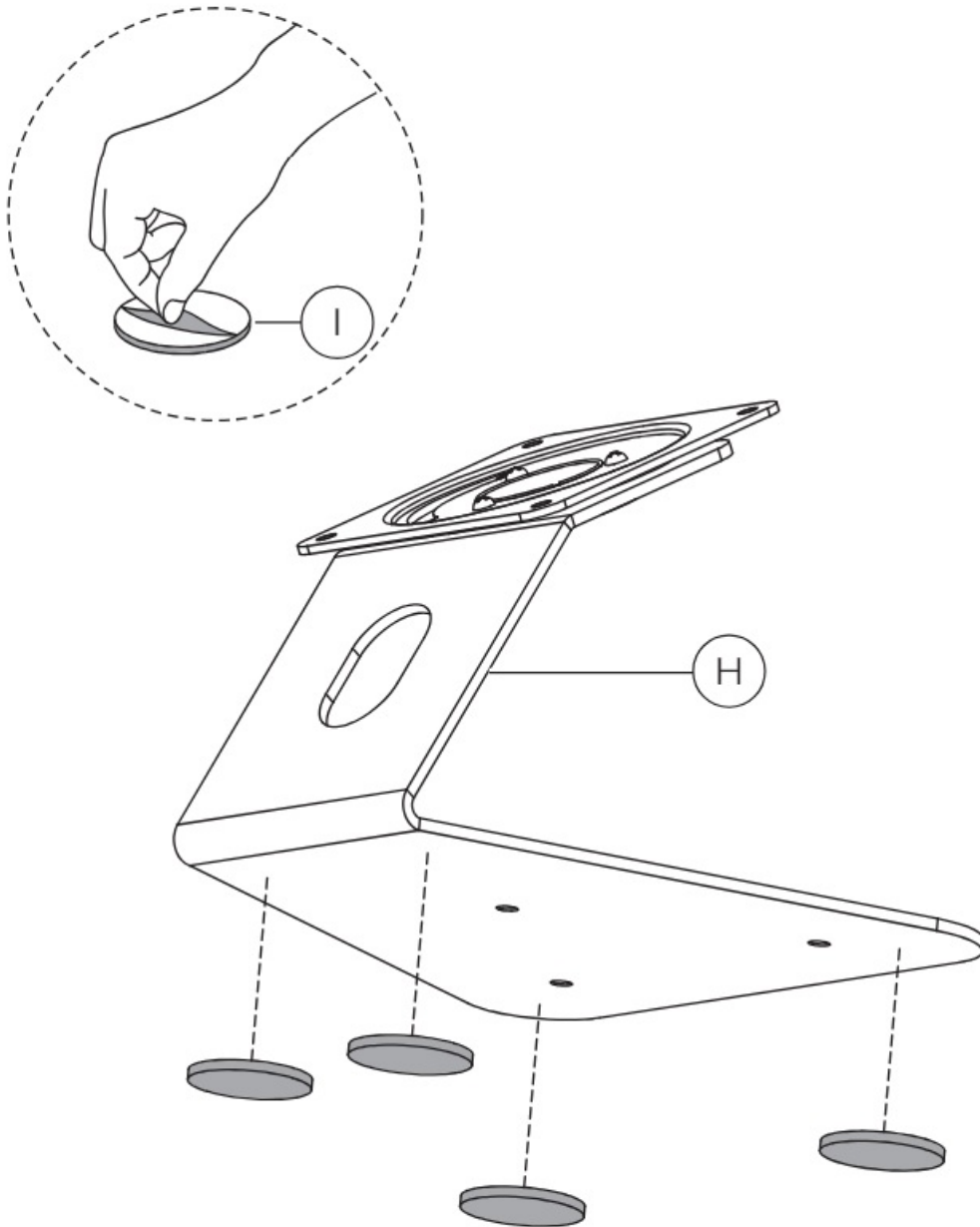
Panel 5: For 10.1" Samsung Galaxy Tab A

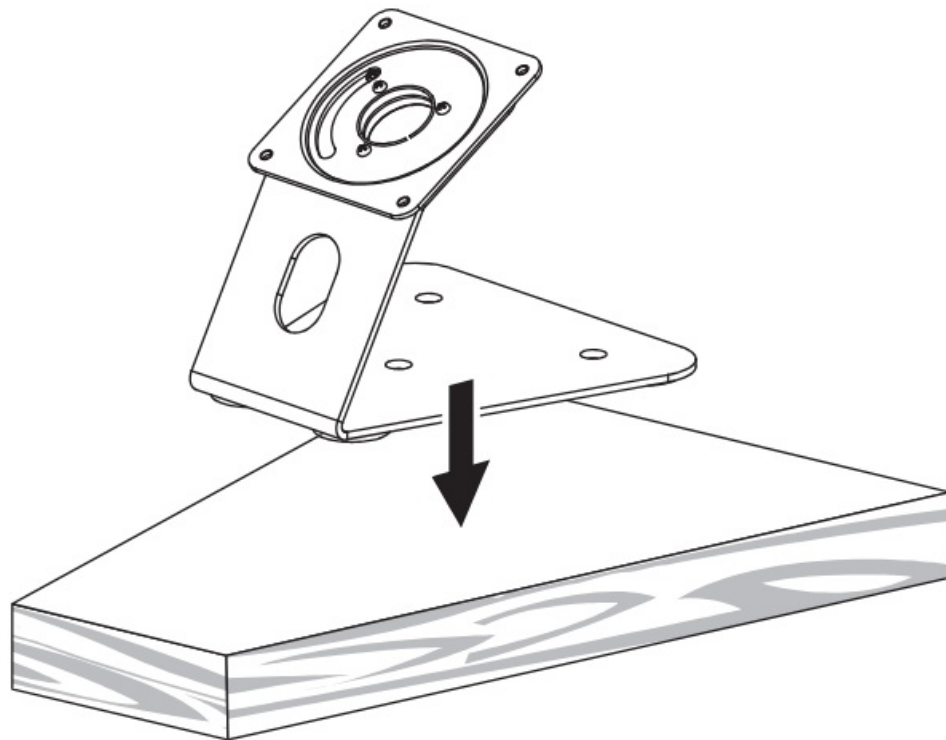
Panel 6: For 10.4" Samsung Galaxy Tab S6 Lite



- **STEP 2 B-1 Countertop**

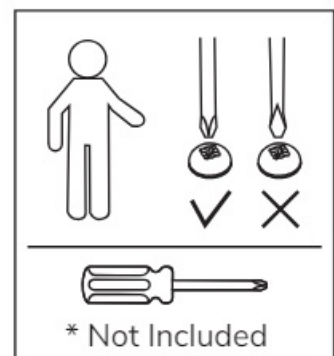
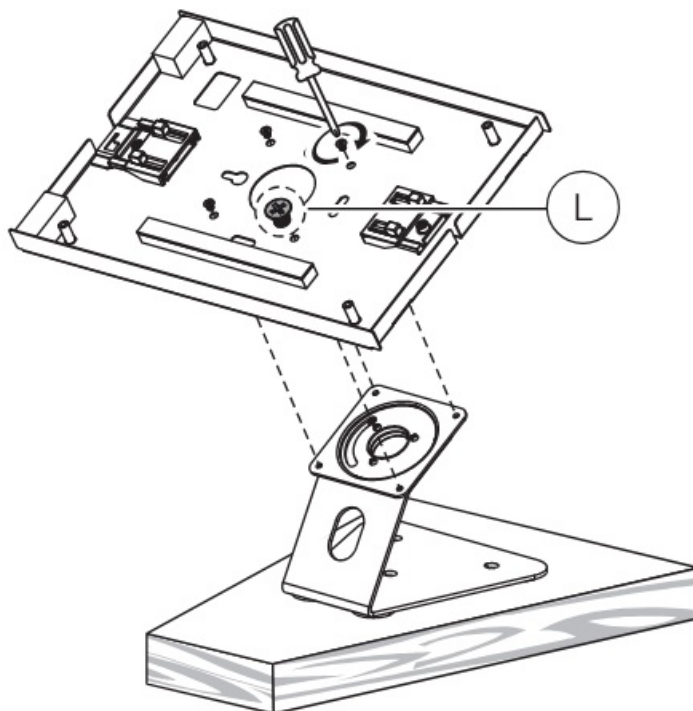
Attach the adhesive pads to the bottom of the base and place it on a countertop

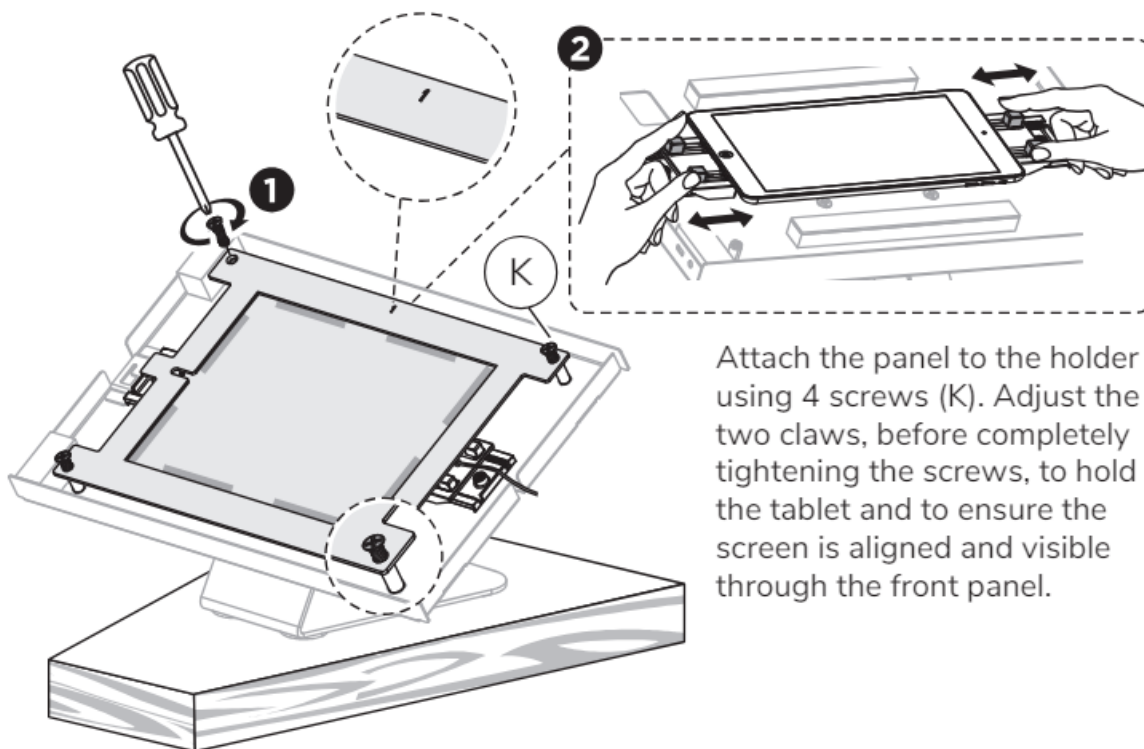
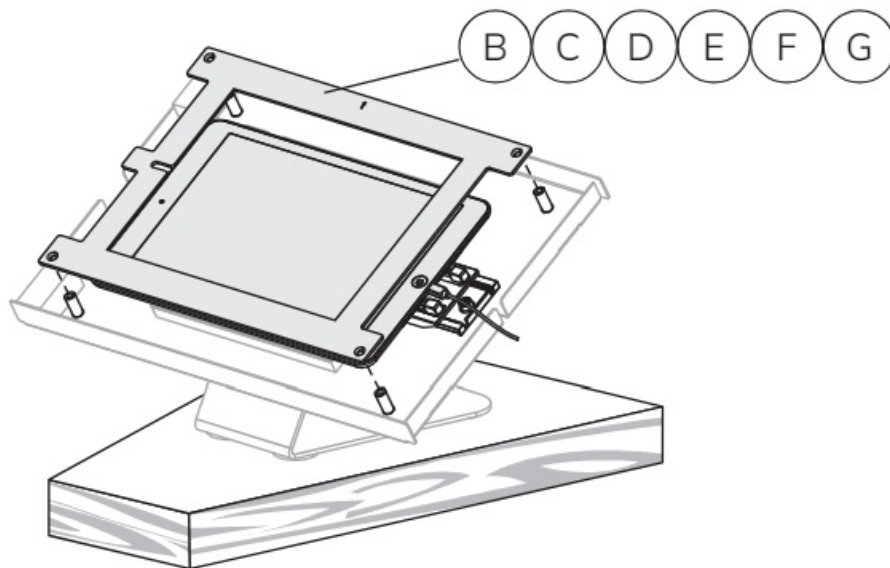




- **STEP 2 B-2 Countertop**

Attach the holder to the mount and place the tablet

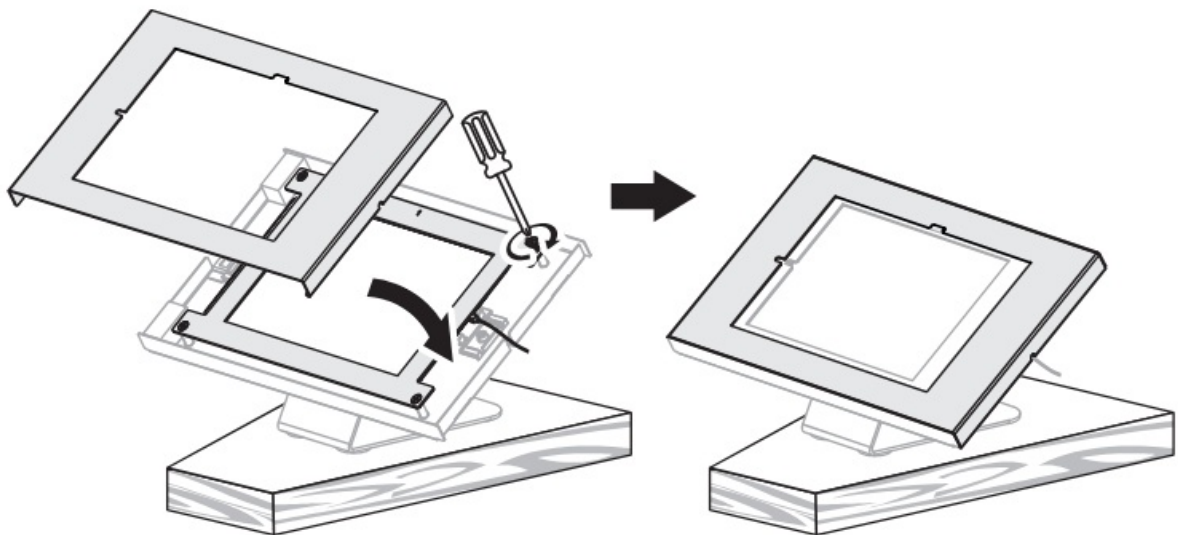




Attach the panel to the holder using 4 screws (K). Adjust the two claws, before completely tightening the screws, to hold the tablet and to ensure the screen is aligned and visible through the front panel.

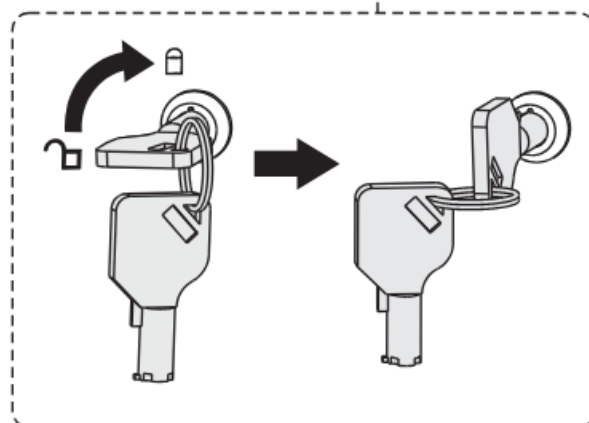
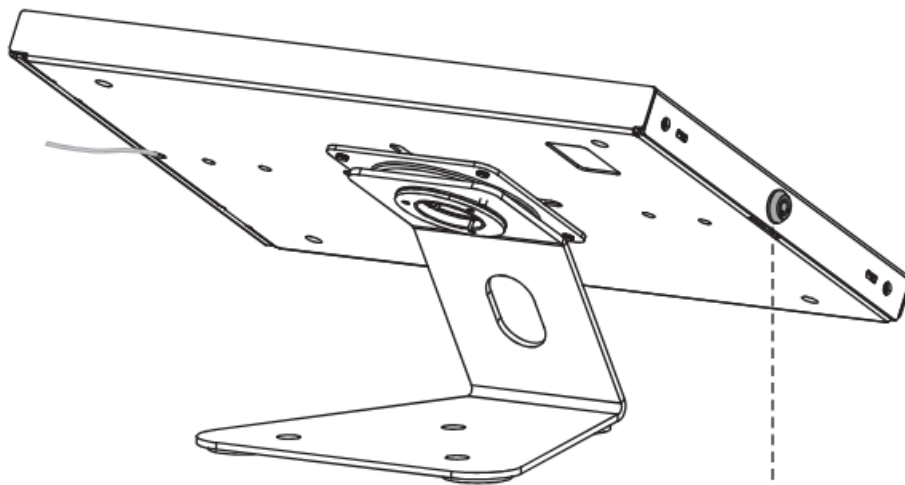
Choose the corresponding panel according to the tablet:

- Panel 1: For 9.7" iPad 5/6, iPad Air 1/2 & iPad Pro (Gen 1)
- Panel 2: For 10.2" iPad 7/8/9 & 10.5" iPad Air 3, iPad Pro (Gen 2)
- Panel 3: For 11" iPad Pro (Gen 3/4/5) & 10.9" iPad 10, iPad Air 4
- Panel 4: For 10.4" Samsung Galaxy Tab A7
- Panel 5: For 10.1" Samsung Galaxy Tab A
- Panel 6: For 10.4" Samsung Galaxy Tab S6 Lit



- **STEP 3**

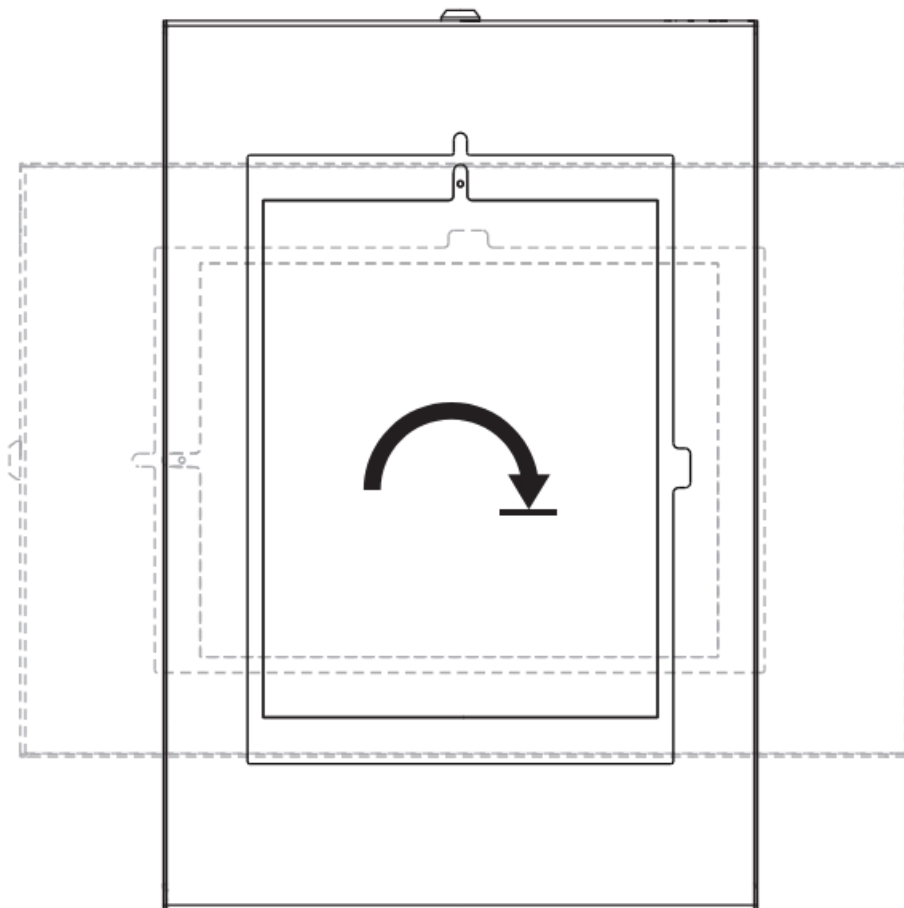
Lock the tablet case with the key



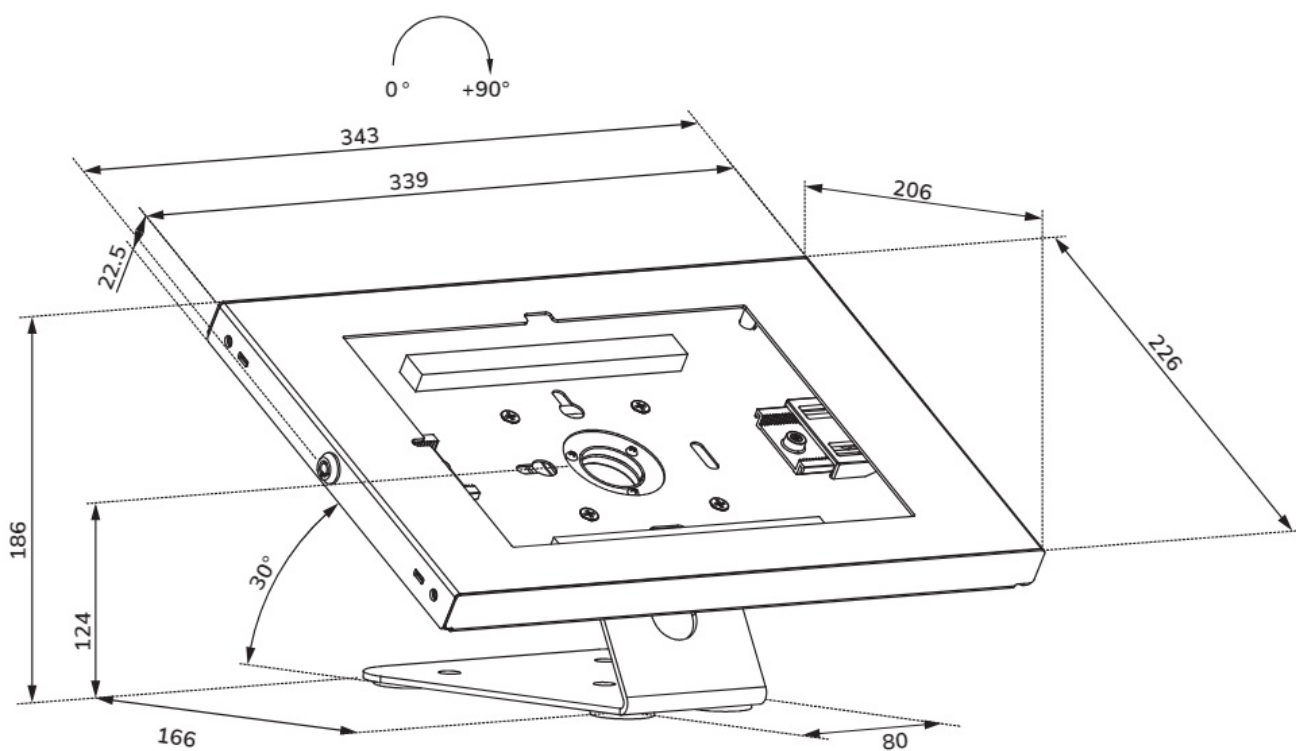
Before locking the case, confirm the camera is visible through the slot as shown.

- **STEP 4**

Adjust the mount to the desired position



DIMENSION



SAFETY WARNINGS

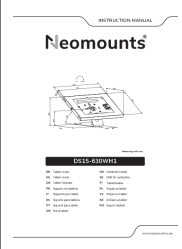
1. To ensure safety, please read this manual carefully before installation and follow the instructions. Store this

manual in a secure place for future reference.

2. The manufacturer shall not be legally responsible for any equipment damage or personal injury caused by incorrect installation or operation other than that covered in this manual.
3. The mount is designed for easy installation and removal. The manufacturer shall not be liable for damage to equipment or personal injuries arising out of human factors or acts of nature, such as earthquakes or typhoons.
4. It is recommended that the mount be installed by qualified personnel only.
5. At least two persons are needed to install or remove the product to avoid the hazard of falling objects.
6. Please carefully inspect the area where the mount is to be installed:
 - Avoid places that are subject to high temperatures, humidity or contact with water.
 - Do not install the product near air conditioning vents or areas with excess dust and fumes.
 - Only install on vertical walls and avoid slanted surfaces.
 - Do not install in places subject to any shock or vibration.
 - Do not install in places subject to direct exposure to bright light. as it may cause eye fatigue when viewing the display panel.
7. Maintain sufficient space around the display to ensure adequate ventilation.
8. To ensure safe installation, first check the structure of the wall, ceiling or floor and select a secure mounting location.
9. The wall, ceiling or floor should be strong enough to sustain a weight of at least four times the display and mount combined. The mounting location must be able to withstand an earthquake or another strong shock.
10. Do not modify any accessories or use broken parts. Contact your dealer with any questions.
11. Tighten all screws (do not exert excessive force to avoid breaking the screw or damaging its thread).
12. Drill holes and bolts will be left in the wall ceiling or floor once the display and bracket are removed Stains may occur after extended use
13. Since the manufacturer has no way to control the wall, ceiling or floor type and installation of the mount, the warranty of the product shall only cover the body of the mount. The warranty period of the product is 5 years
14. Please consult the English language manual for any dispute on conditions.

WWW.NEOMOUNTS.COM

Documents / Resources

	<p>Neomounts DS15-630WH1 Table Stand [pdf] Instruction Manual DS15-630WH1 Table Stand, DS15-630WH1, Table Stand, Stand</p>
---	--

References

- [N Neomounts](#)

- [User Manual](#)

Manuals+, Privacy Policy

This website is an independent publication and is neither affiliated with nor endorsed by any of the trademark owners. The "Bluetooth®" word mark and logos are registered trademarks owned by Bluetooth SIG, Inc. The "Wi-Fi®" word mark and logos are registered trademarks owned by the Wi-Fi Alliance. Any use of these marks on this website does not imply any affiliation with or endorsement.