

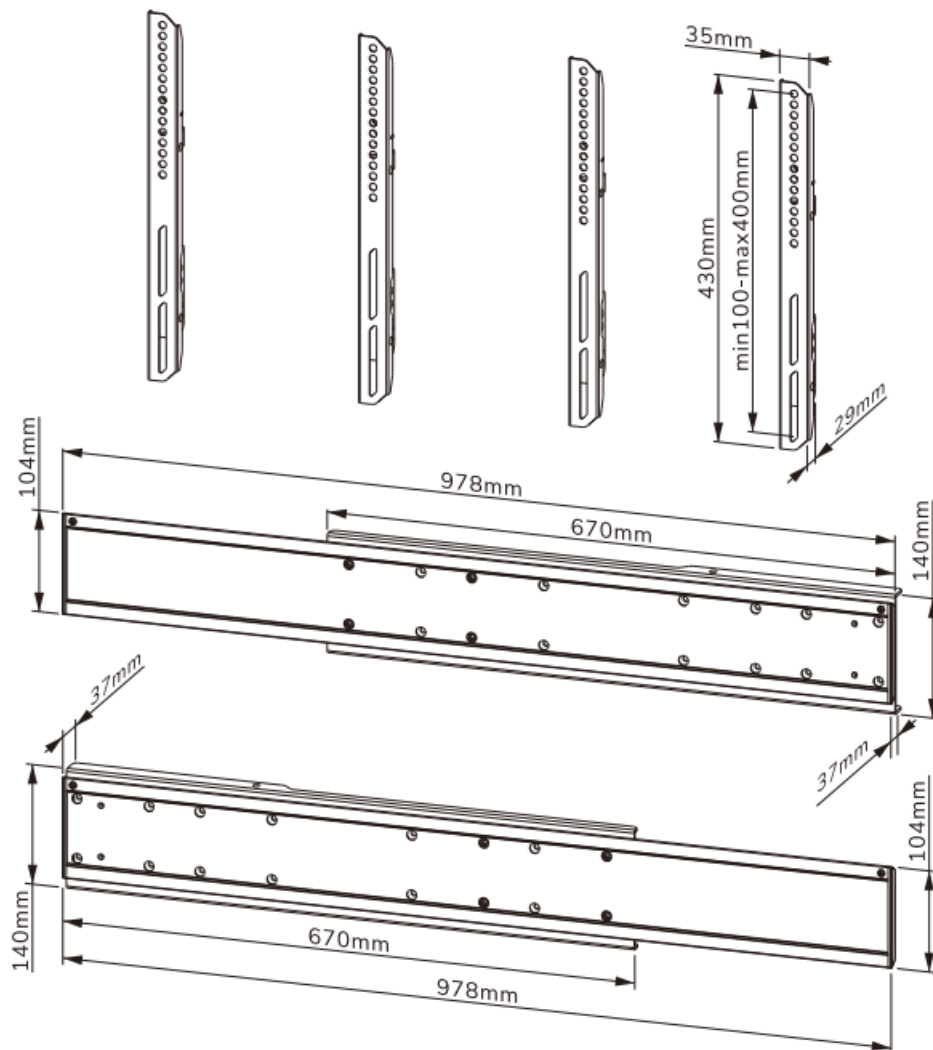


Neomounts ADM-875BL2 Dual Screen Adapter Instruction Manual

[Home](#) » [Neomounts](#) » Neomounts ADM-875BL2 Dual Screen Adapter Instruction Manual 

Neomounts[®]

ADM-875BL2 Dual Screen Adapter
Instruction Manual



ADM-875BL2

Contents

- 1 [ADM-875BL2 Dual Screen Adapter](#)
- 2 [Documents / Resources](#)

ADM-875BL2 Dual Screen Adapter



Tool

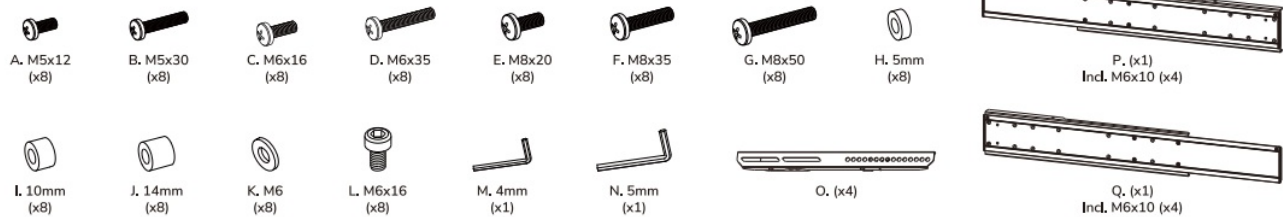


100x100 -
800x400 mm



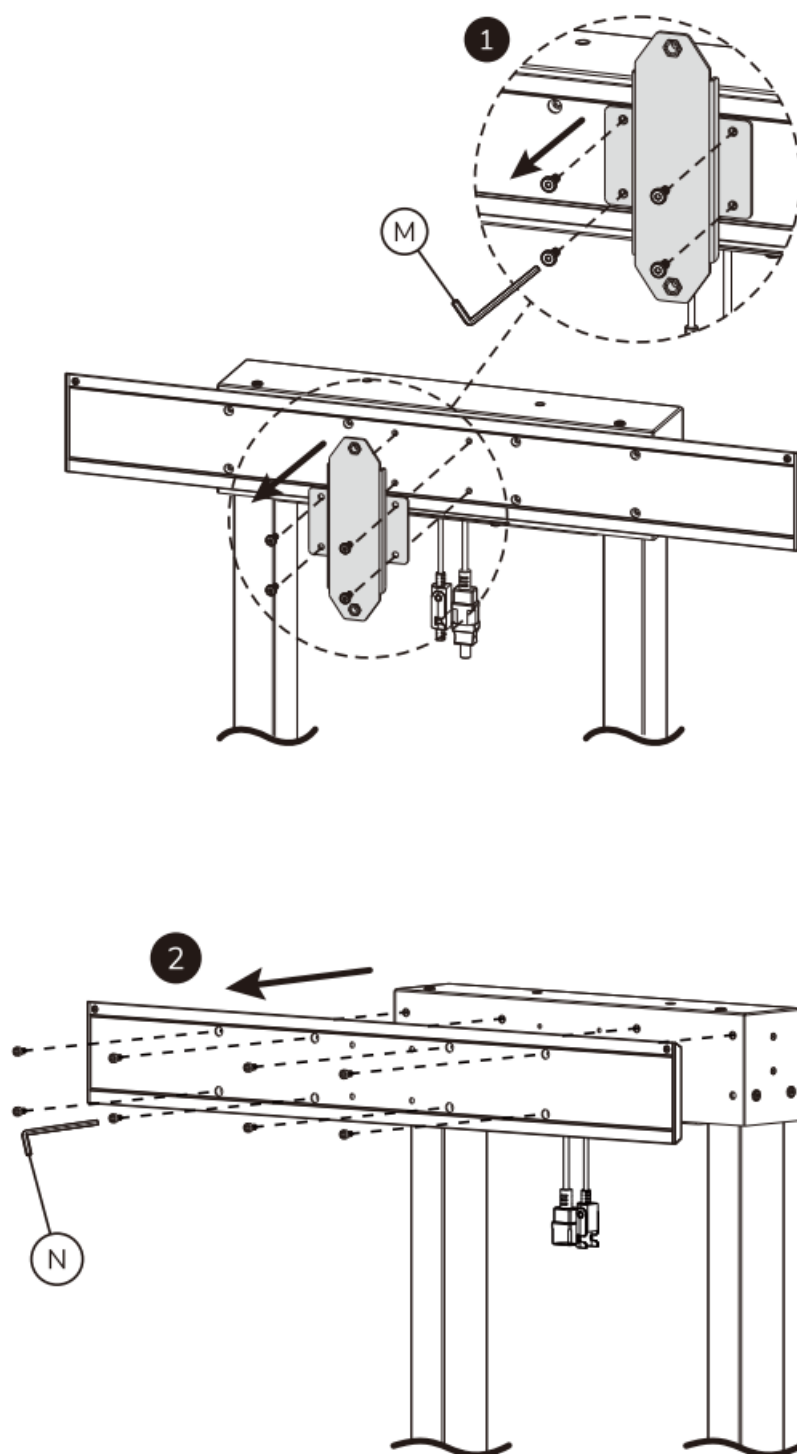
0-100 kg

PARTS



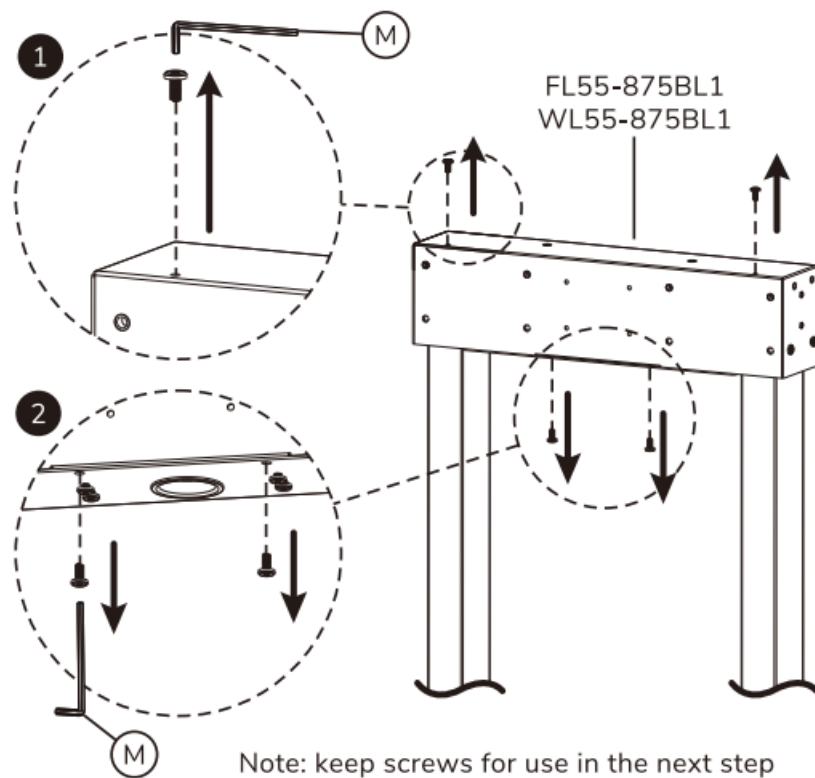
OPTION

If applicable: remove FL55-875/WL55-875 backplate, brackets and for AFL-875 videocast



STEP 1

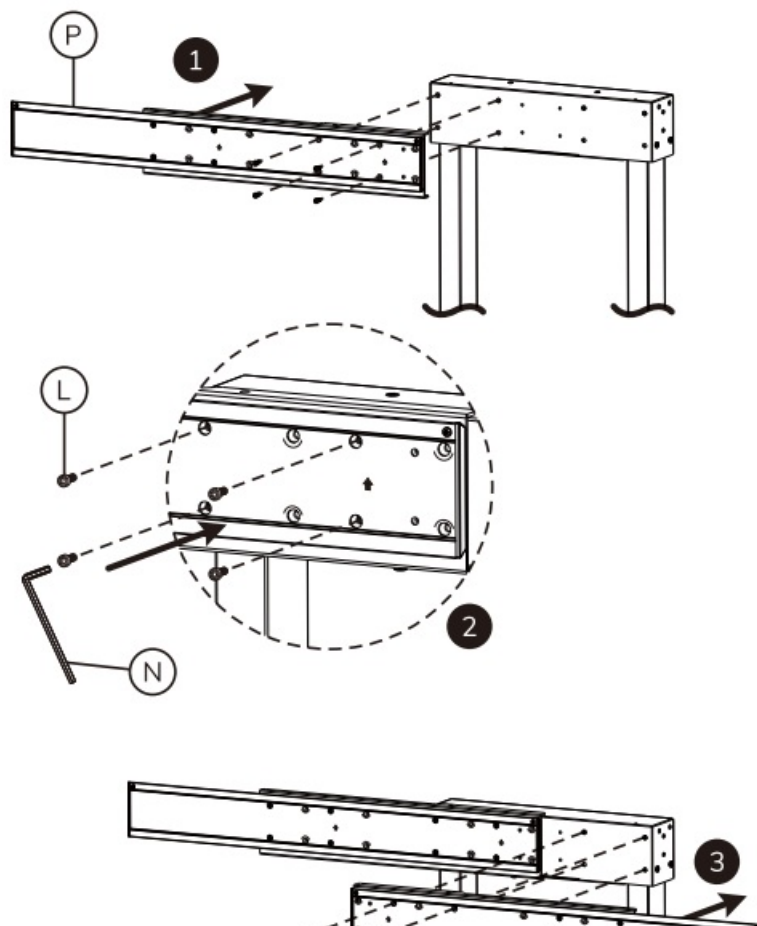
Prepare the floor stand for installation of the adapter plate by removing the specified screws

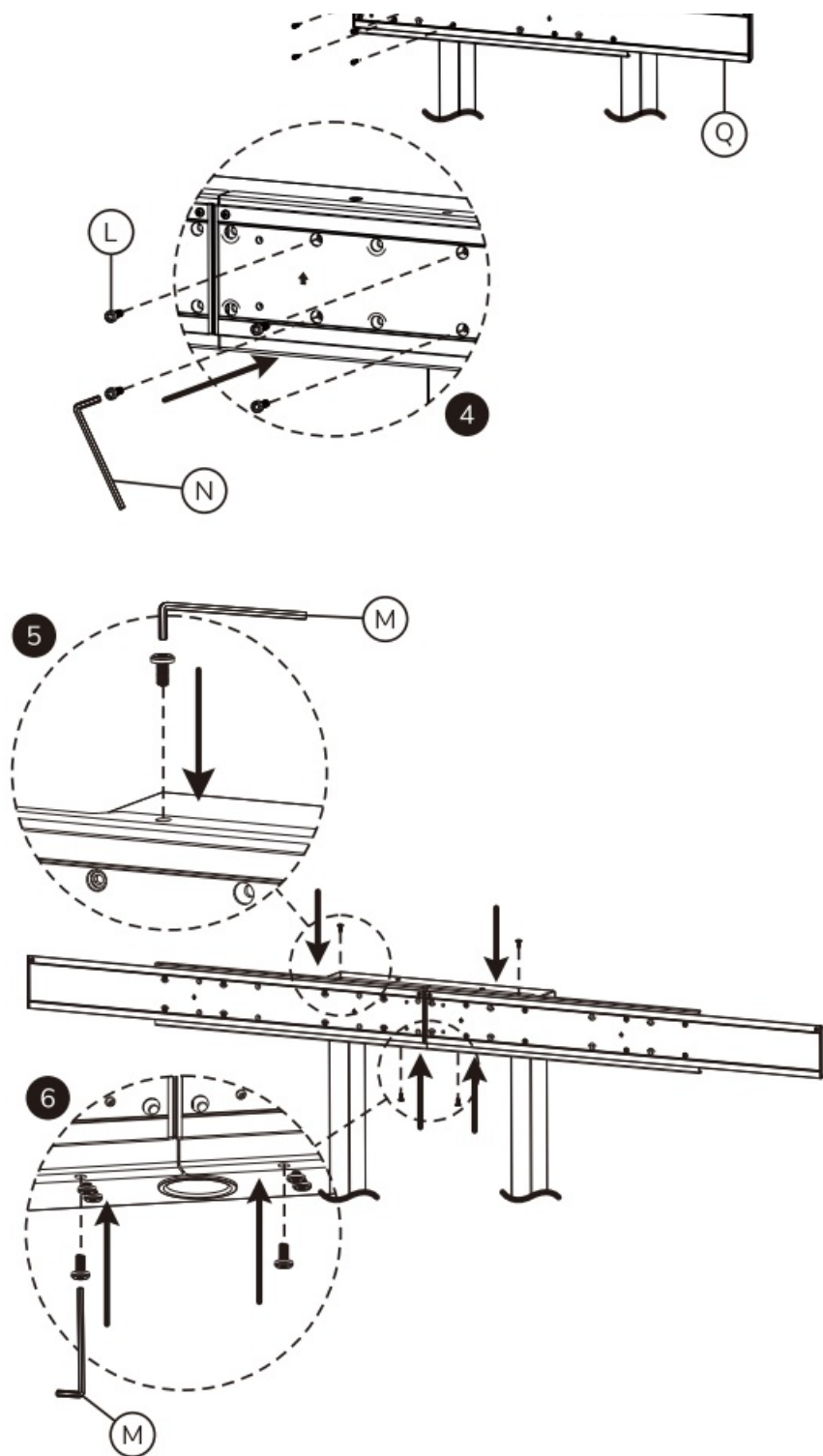


STEP 2

Attach the adapter plate to the floor stand

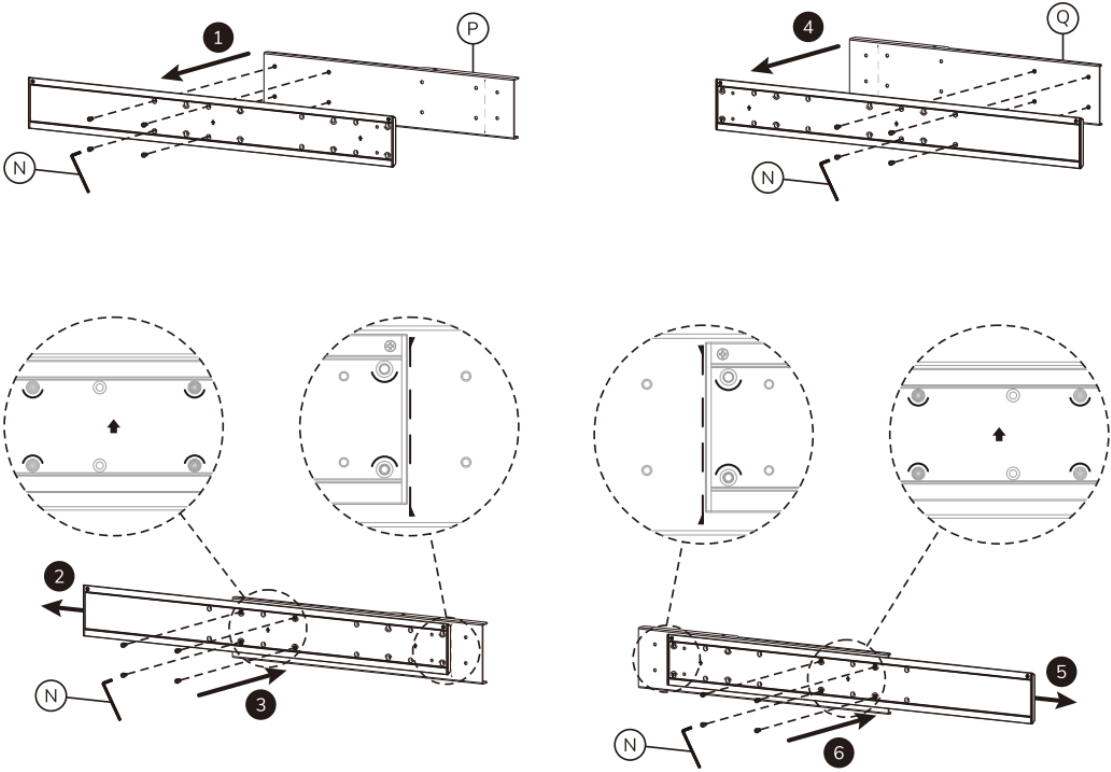
Default setup: screen size 42-48"



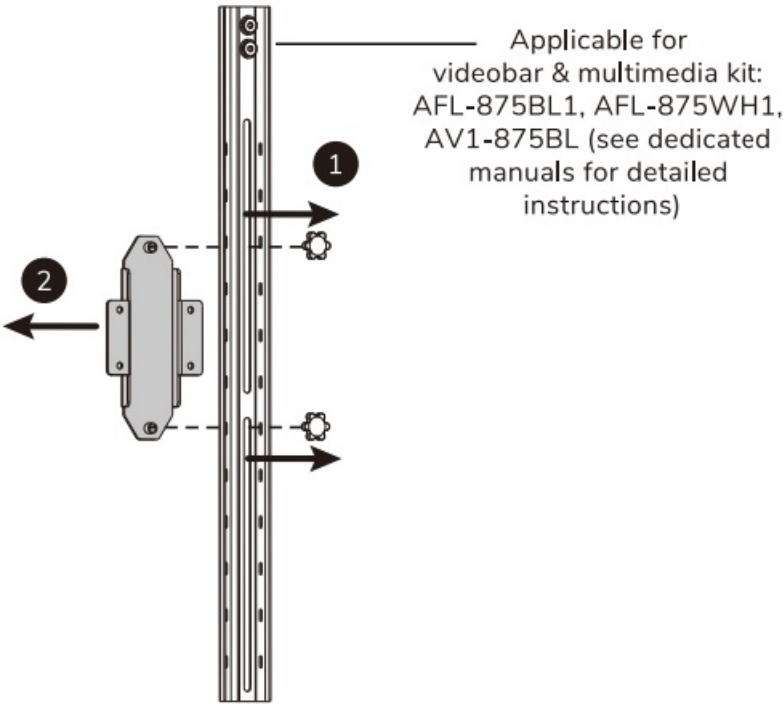


Assemble the adapter plate according to the indicated position on the plates

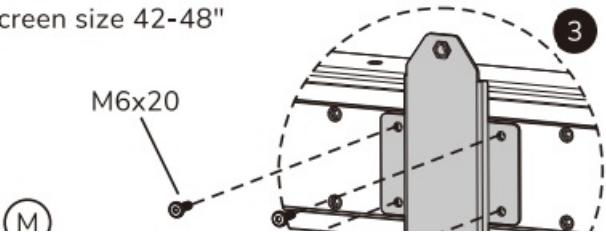
For screen size 48-65"

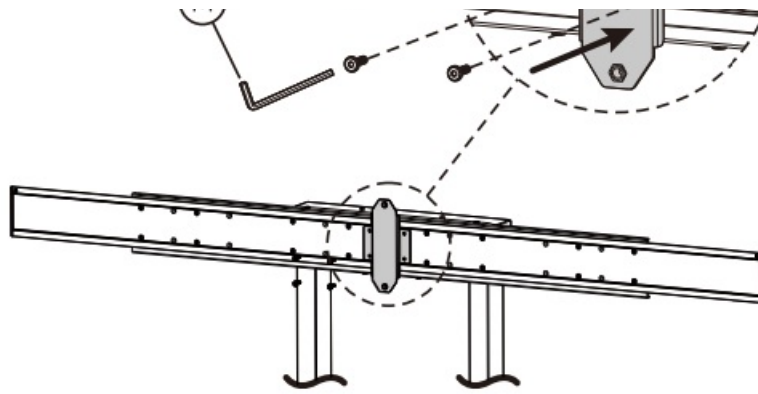


Install the videobar adapter plate

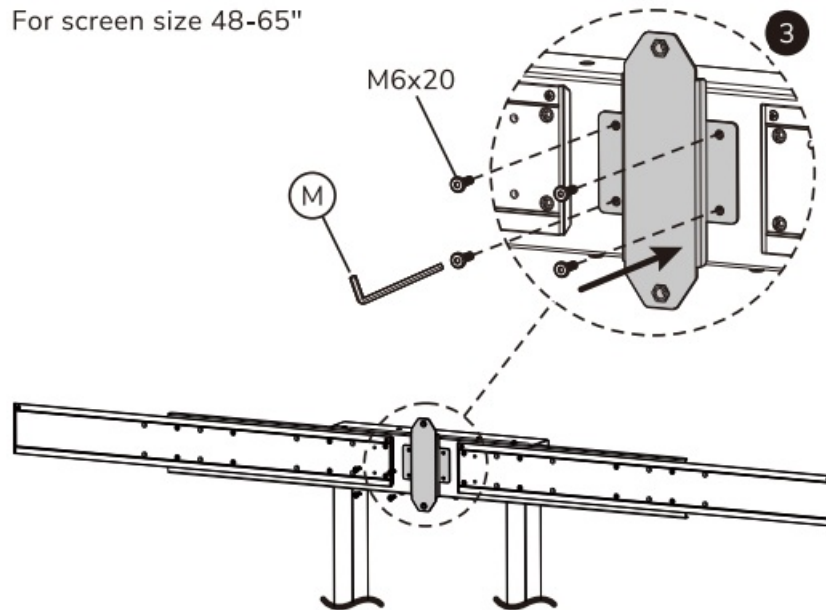


Default setup: screen size 42-48"



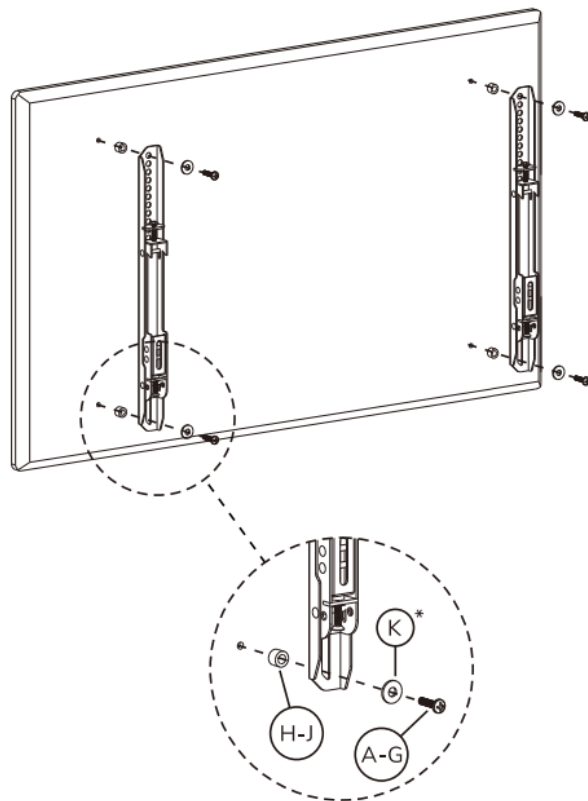


For screen size 48-65"



STEP 3

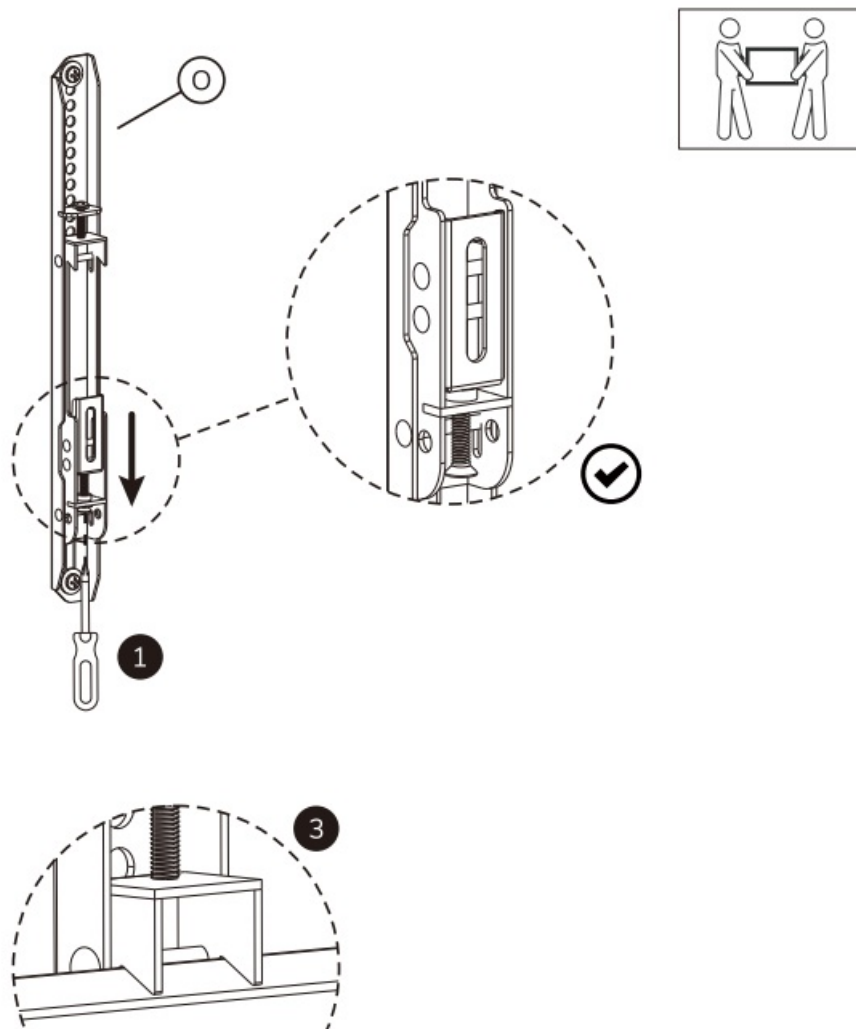
Install the adapter brackets and use spacers if necessary.

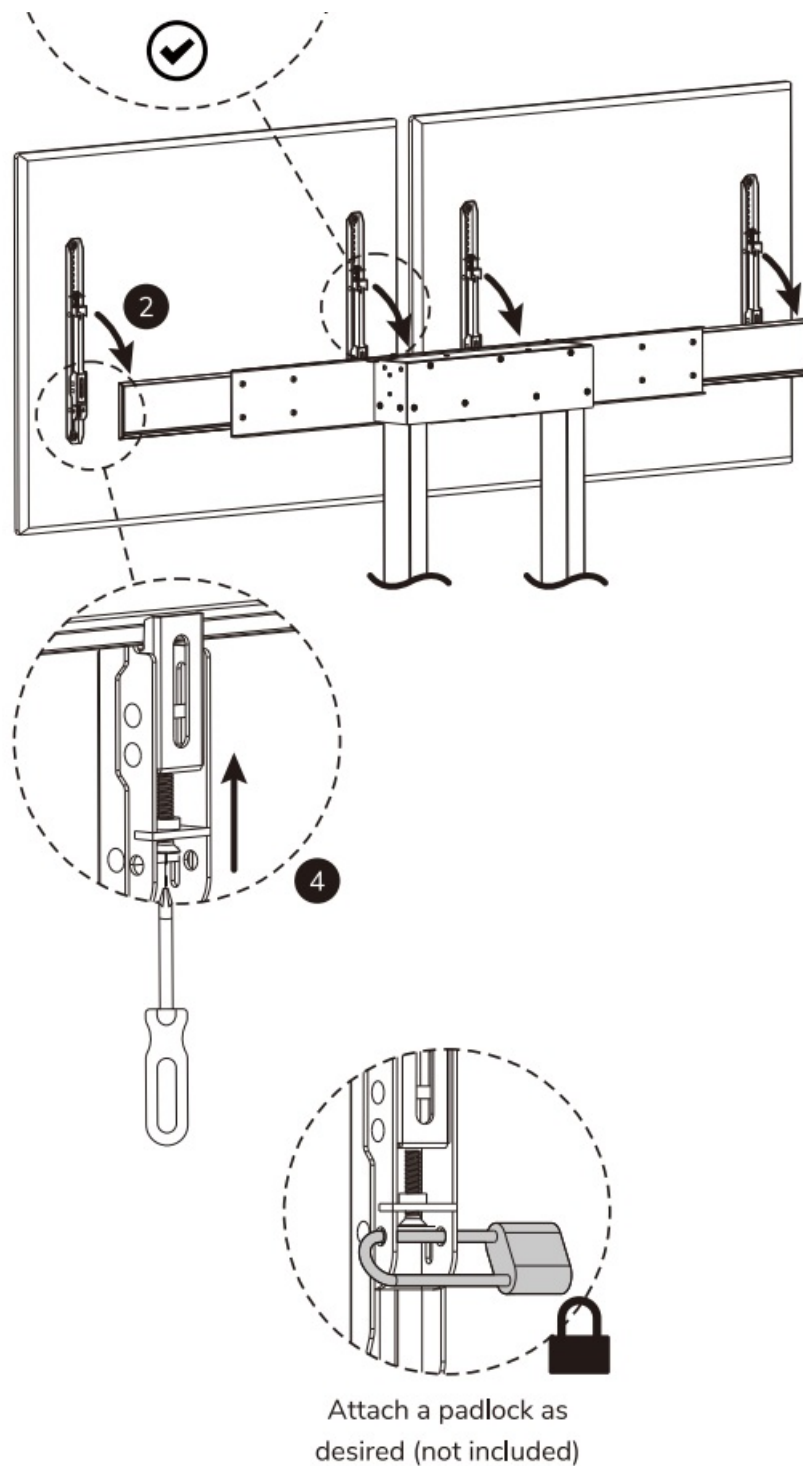


* Only applicable when using M5/M6

STEP 4

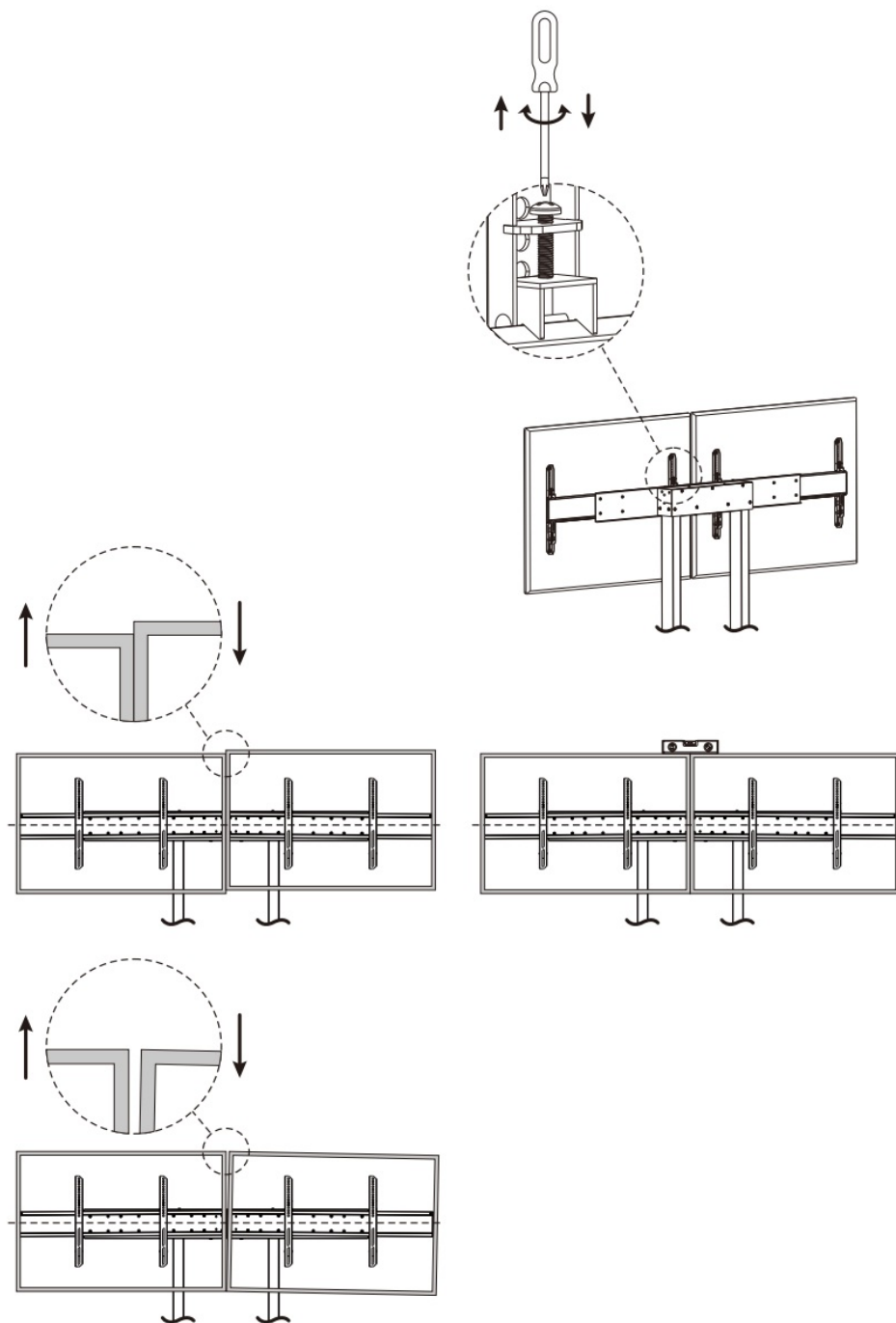
Attach the screens and secure them





STEP 5

Level the screens if necessary




CAUTION

1. To ensure safety please read this manual carefully before installation and follow the instructions. Store this manual in a secure place for future reference.
2. The manufacturer shall not be legally responsible for any equipment damage or personal injury caused by incorrect installation or operation other than that covered in this manual.
3. The mount is designed for easy installation and removal. The manufacturer shall not be liable for damage to equipment or personal injuries arising out of human factors or acts of nature, such as earthquake or typhoon.
4. It is recommended that the mount be installed by qualified personnel only.
5. At least two persons are needed to install or remove the product to avoid hazard of falling objects.
6. Please carefully inspect the area where the mount is to be installed:
 - Avoid places that are subject to high temperatures, humidity or contact with water.
 - Do not install the product near air conditioning vents or areas with excess dust and fumes.

- Only install on vertical walls and avoid slanted surfaces.
 - Do not install in places subject to any shock or vibration.
 - Do not install in places subject to direct exposure to bright light as it may cause eye fatigue when viewing the display panel.
7. Maintain sufficient space around the display to ensure adequate ventilation.
 8. To ensure safe installation. first check the structure of the wall, ceiling or floor and select a secure mounting location.
 9. The wall, ceiling or floor should be strong enough to sustain a weight of at least four times of the display and mount combined. The mounting location must be able to withstand earthquake or other strong shock.
 10. Do not modify any accessories or use broken parts. Contact your dealer with any questions.
 11. Tighten all screws (do not exert excessive force to avoid breaking the screw or damaging its thread).
 12. Drill holes and bolts will be left in the wall, ceiling or floor once the display and bracket are removed. Stains may occur after extended use.
 13. Since the manufacturer has no way to control the wall. ceiling or floor type and installation of the mount the warranty of the product shall only cover the body of the mount The warranty period of the product is 5 years.
 14. Please consult the English language manual for any dispute on conditions.

Neomounts®

Documents / Resources

	<p>Neomounts ADM-875BL2 Dual Screen Adapter [pdf] Instruction Manual ADM-875BL2, ADM-875BL2 Dual Screen Adapter, Dual Screen Adapter, Screen Adapter, Adapter</p>
---	---