



Neomounts by Newstar THINCLIENT-01 CPU holder Instruction Manual

[Home](#) » [NEOMOUNTS BY NEWSTAR](#) » Neomounts by Newstar THINCLIENT-01 CPU holder Instruction Manual

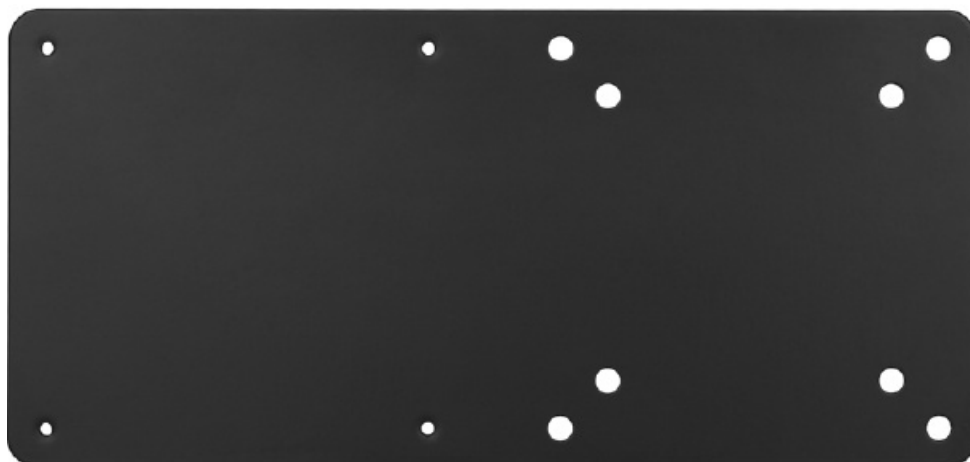


Contents

- [1 Neomounts by Newstar THINCLIENT-01 CPU holder](#)
- [2 Introduction](#)
- [3 Parts](#)
- [4 CAUTION](#)
- [5 User Support](#)
- [6 Frequently Asked Questions](#)
- [7 Related Posts](#)

Neomounts®

Neomounts by Newstar THINCLIENT-01 CPU holder



Introduction

The Neomounts by Newstar THINCLIENT-01 is a CPU holder designed to securely mount and hold thin client computers. It is an ergonomic solution that helps to improve workspace organization and efficiency by freeing up desk space and reducing cable clutter. The THINCLIENT-01 holder is made of durable steel and is designed to support thin clients with a maximum weight capacity of up to 10 kg. It can be easily mounted on the underside of desks or work surfaces using the included mounting hardware, allowing for easy installation and adjustment.

The holder features adjustable straps that can be customized to fit a wide range of thin client sizes and shapes, ensuring a secure and stable hold. The straps are also designed to allow for easy access to the thin client ports and cables, making maintenance and upgrade a breeze.

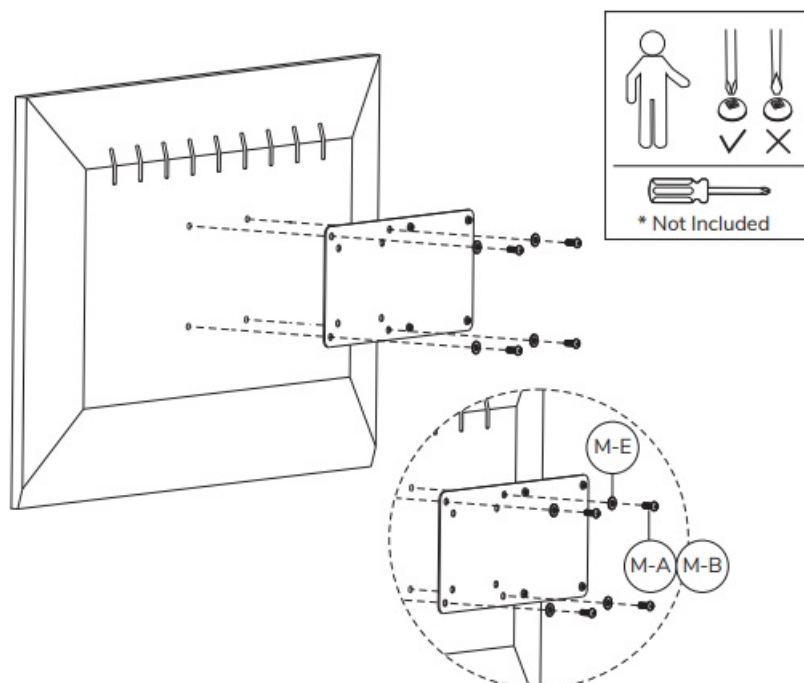
In addition to its functional benefits, the THINCLIENT-01 holder also boasts a sleek and modern design that complements any workspace. Its black finish and clean lines make it a stylish addition to any desk or workstation.

Parts



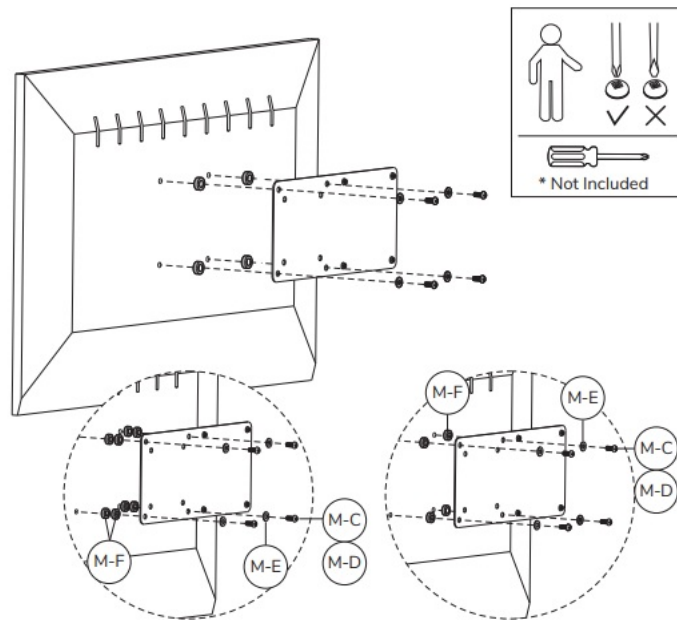
Step 1

- Attach the mount to the back of a display



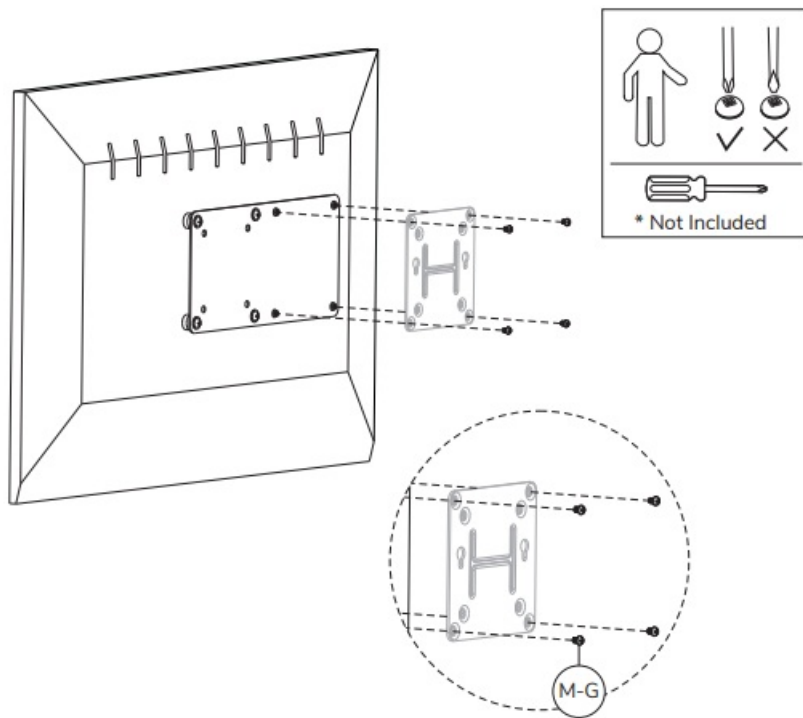
OPTION

- Use spacers if necessary



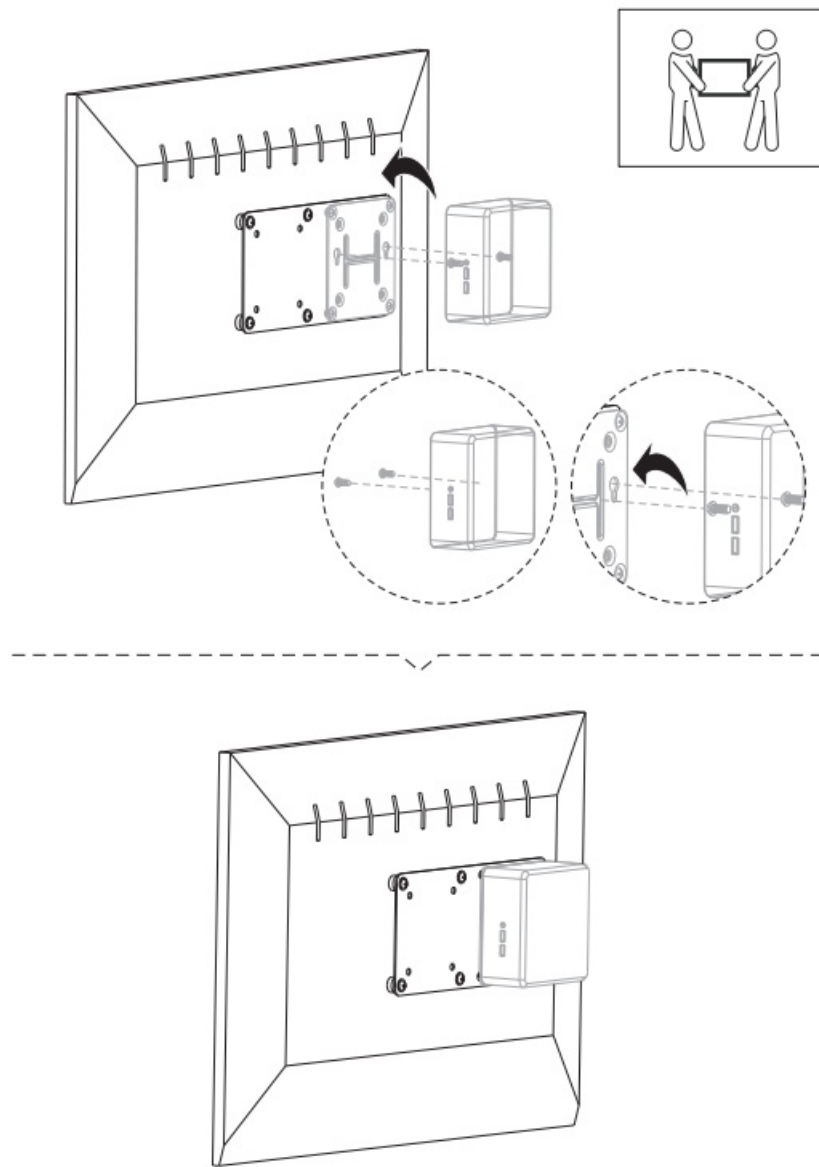
STEP 2

- Attach the PC/ Thin Client holder on the mount



STEP 3

- Place the Thin Client



CAUTION

1. To ensure safety, please read this manual carefully before installation and follow the instructions. Store this manual in a secure place for future reference.
2. The manufacturer shall not be legally responsible for any equipment damage or personal injury caused by incorrect installation or operation other than that covered in this manual.
3. The mount is designed for easy installation and removal. The manufacturer shall not be liable for damage to equipment or personal injuries arising out of human factors or acts of nature, such as earthquakes or typhoons.
4. It is recommended that the mount be installed by qualified personnel only.
5. At least two persons are needed to install or remove the product to avoid the hazard of falling objects.
6. **Please carefully inspect the area where the mount is to be installed:**
 - Avoid places that are subject to high temperatures, humidity, or contact with water.
 - Do not install the product near air conditioning vents or areas with excess dust and fumes.
 - Only install on vertical walls and avoid slanted surfaces.
 - Do not install in places subject to any shock or vibration.
 - Do not install in places subject to direct exposure to bright light, as it may cause eye fatigue when viewing the display panel.

7. Maintain sufficient space around the display to ensure adequate ventilation.
8. To ensure a safe installation, first check the structure of the wall, ceiling, or floor and select a secure mounting location.
9. The wall, ceiling, or floor should be strong enough to sustain a weight of at least four times the display and mount combined. The mounting location must be able to withstand earthquakes or other strong shocks.
10. Do not modify any accessories or use broken parts. Contact your dealer with any questions.
11. Tighten all screws (do not exert excessive force to avoid breaking the screw or damaging its thread).
12. Drill holes and bolts will be left in the wall, ceiling, or floor once the display and bracket are removed. Stains may occur after extended use.
13. Since the manufacturer has no way to control the wall, ceiling, or floor type and installation of the mount, the warranty of the product shall only cover the body of the mount. The warranty period of the product is 5 years.
14. Please consult the English language manual for any dispute on conditions.

User Support

- **Address:** Neomounts Computer Products Europa B.V. | Wateringweg 62 | 2031 EJ Haarlem | The Netherlands |
- **Contact no.** +3 1(0)23-5478888
- **Support:** info@neomounts.com
- **Email:** www.neomounts.com
- **Address:** Chamber of Commerce 37076185 (VAT NL805154383B0 1 | BIC RABONL2U | IBAN NL51RABO0375403299

Frequently Asked Questions

What is the maximum weight capacity of the THINCLIENT-01 holder?

The THINCLIENT-01 holder can support up to 10 kg of weight.

Can the holder be mounted on any desk or work surface?

The holder can be mounted on most desks or work surfaces that have a thickness of up to 5 cm.

Is the THINCLIENT-01 holder adjustable?

Yes, the holder features adjustable straps that can be customized to fit a wide range of thin client sizes and shapes.

Does the holder come with mounting hardware?

Yes, the holder comes with all the necessary mounting hardware for easy installation.

Does the holder allow for easy access to the thin client ports and cables?

Yes, the holder is designed to provide easy access to the thin client ports and cables, making maintenance and upgrades simple.

What is the material of the THINCLIENT-01 holder?

The holder is made of durable steel.

What is the color of the THINCLIENT-01 holder?

The holder has a black finish that complements any workspace.

What is the function of the CPU holder?

A CPU holder allows you to hang the PC under your desk, easily saving space under it. When a PC is standing on the ground, more dust can get into it, and will also stand in the way when the space under the desk has to be cleaned.

Do you need a CPU holder?

In addition to the practical applications and benefits of a CPU holder, having one installed on your desk or workstation can protect your computer. A CPU that sits on the floor is more susceptible to collecting dust or hair. This is especially true when you are working with carpet.

Where should CPU be kept?

You should have it preferably on the desk. It's all about the airflow. Computers need space to breathe or else they will overheat and die. Placing a computer under the desk will promote the sucking in of air (and with it dust), with no space to expel it.

Download this PDF Link: [Neomounts by Newstar THINCLIENT-01 CPU holder Instruction Manual](#)