

NEOGRIP Nintendo Switch OLED and Regular



NEOGRIP Nintendo Switch OLED and Regular Instructions

[Home](#) » [NEOGRIP](#) » NEOGRIP Nintendo Switch OLED and Regular Instructions 

Contents

- [1 NEOGRIP Nintendo Switch OLED and Regular](#)
- [2 Fitting the NeoGrip](#)
- [3 Removing the NeoGrip](#)
- [4 Switching Grips](#)
- [5 Switching to fit regular SWITCH](#)
- [6 Documents / Resources](#)
 - [6.1 References](#)

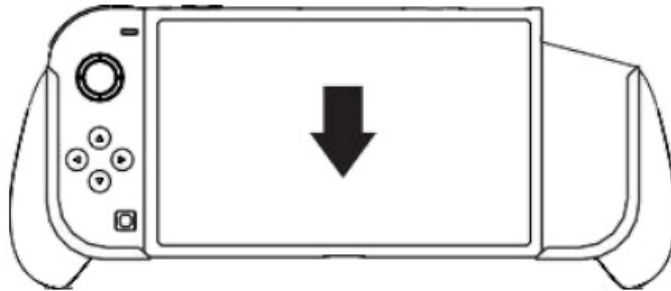
NEO
GRIP

NEOGRIP Nintendo Switch OLED and Regular

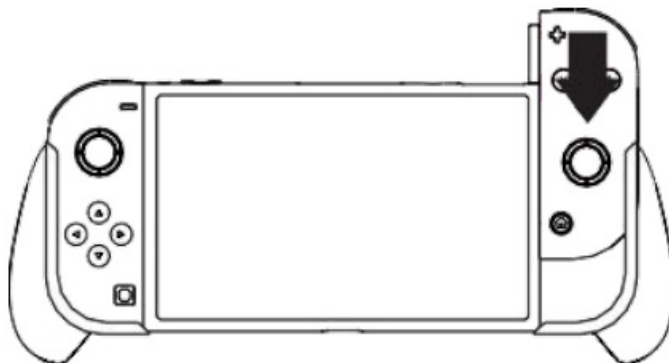


Fitting the NeoGrip

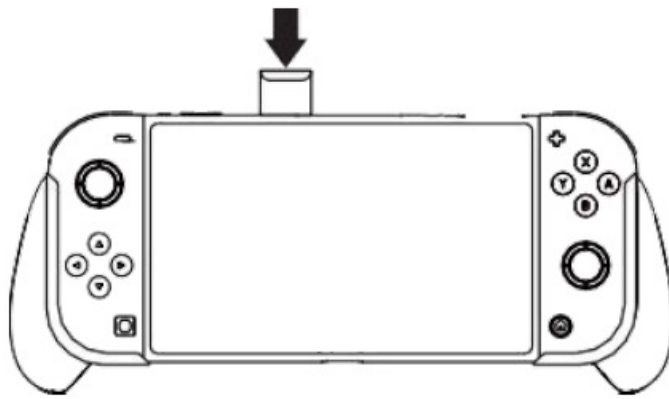
1. Remove one of the joy cons and put the SWITCH into the NeoGrip.



2. Gently insert the joy-con.

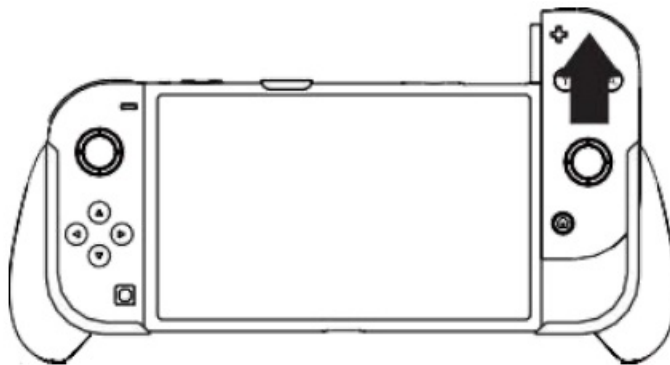


3. Slide in the holder.

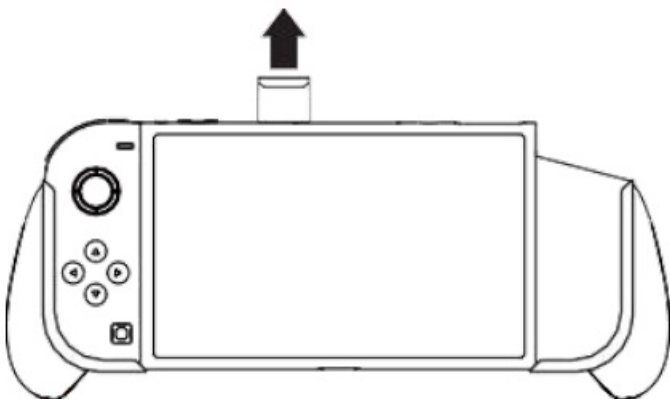


Removing the NeoGrip

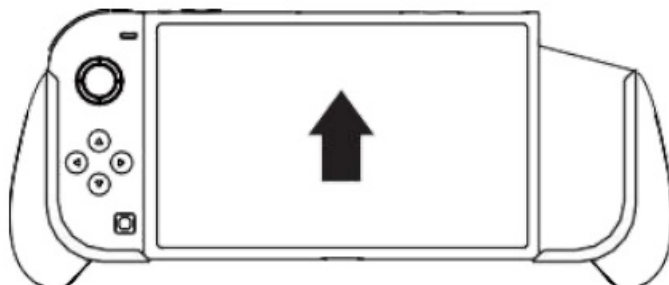
1. Remove one of the joy cons.



2. Slide off the holder.

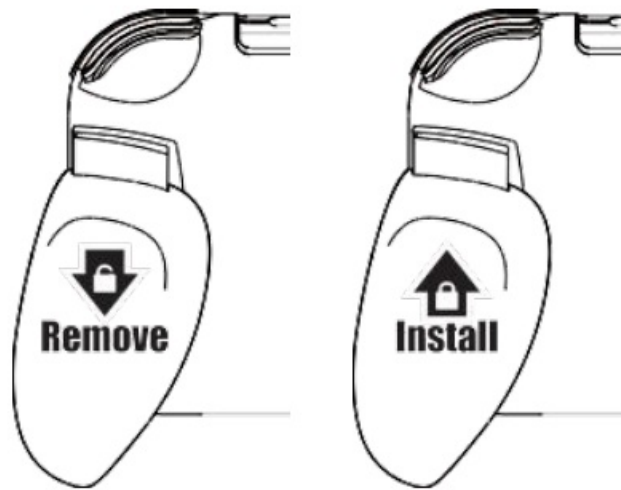


3. Remove the SWITCH.

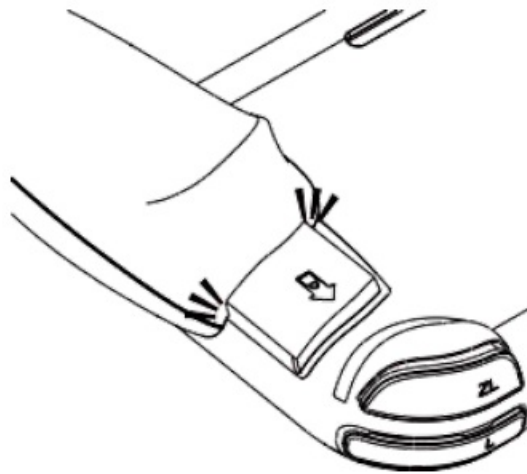


Switching Grips

1. Slide grip downwards to remove and upwards to install.

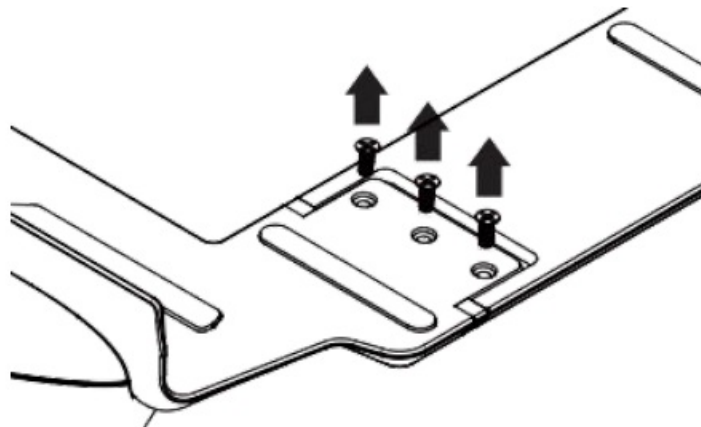


2. Please ensure the slider is fitted correctly.

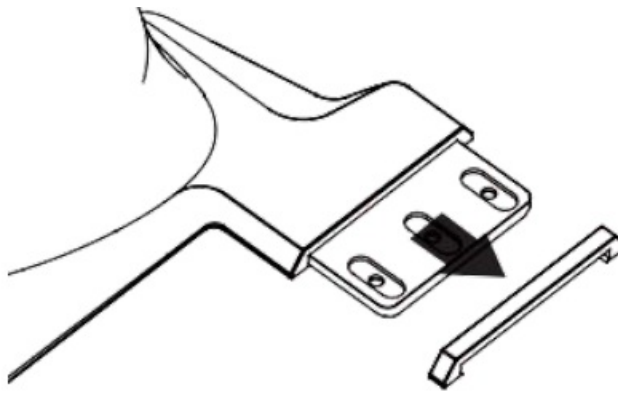


Switching to fit regular SWITCH

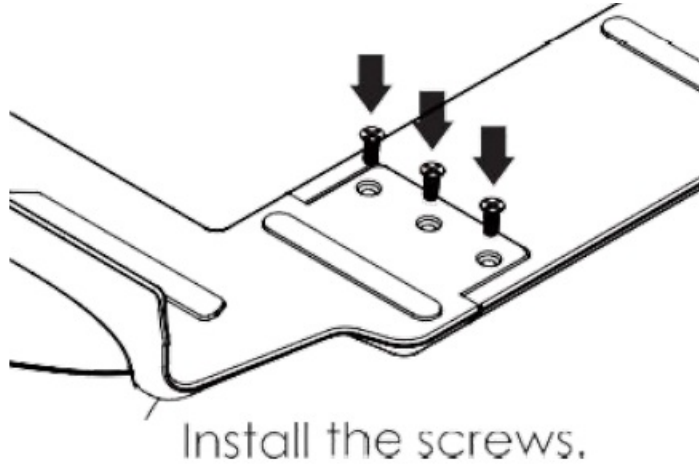
1. Remove the screws.



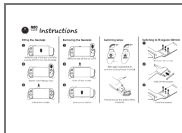
2. Slide off the spacer.



3. Install the screws.



Documents / Resources



[NEOGRIP Nintendo Switch OLED and Regular](#) [pdf] Instructions

Nintendo Switch OLED and Regular, Nintendo, Switch OLED and Regular, OLED and Regular, Regular

References

- [User Manual](#)

[Manuals+](#), [Privacy Policy](#)

This website is an independent publication and is neither affiliated with nor endorsed by any of the trademark owners. The "Bluetooth®" word mark and logos are registered trademarks owned by Bluetooth SIG, Inc. The "Wi-Fi®" word mark and logos are registered trademarks owned by the Wi-Fi Alliance. Any use of these marks on this website does not imply any affiliation with or endorsement.