



## Neodrain SWN009 Double Layer Niche Installation Guide

[Home](#) » [Neodrain](#) » Neodrain SWN009 Double Layer Niche Installation Guide 

# Neodrain<sup>®</sup>

### INSTALLATION MANUAL

Please read the instruction carefully before using.

#### Contents

- 1 SAFETY NOTES:
- 2 INSTALLATION INSTRUCTIONS:
- 3 IMPORTANT NOTES:
- 4 Documents / Resources
  - 4.1 References

#### SAFETY NOTES:

Gloves should be worn during installation to prevent crushing and cutting injuries.

#### INSTALLATION INSTRUCTIONS:

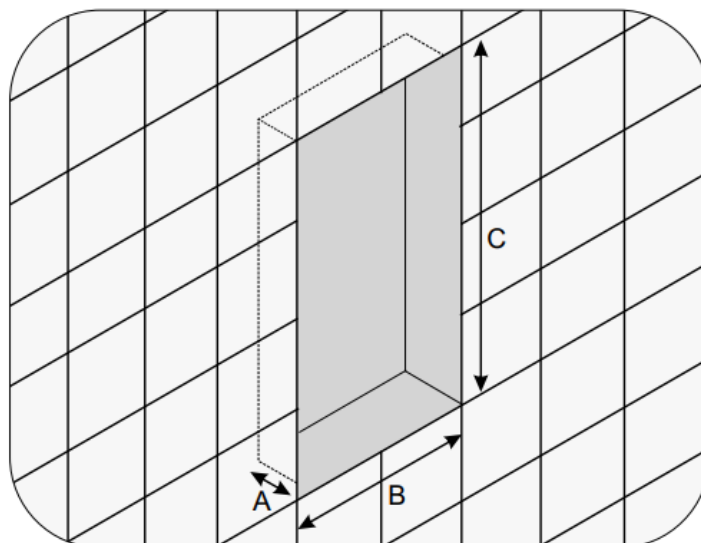
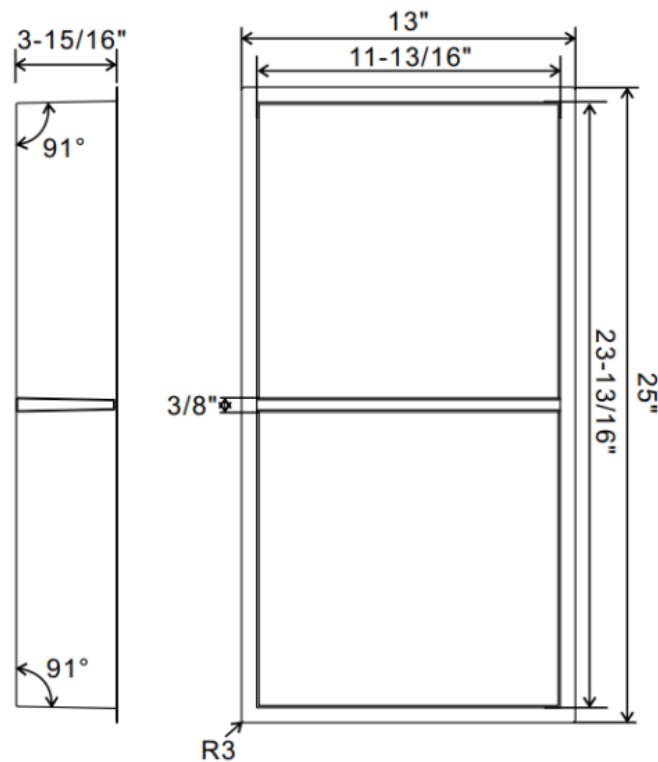
- The plumbing codes applicable in the respective countries must be observed. Prior to installation, inspect the product for transport damages. After it has been installed, no transport or surface damage will be honoured.
- Before installation, the wall of the installation area should have been reserved, it cannot to be the bearing wall and the wall thickness no less than 25cm. The reserved installation position (opening size) and the overall size of the product differ by 15mm in width and length. The following dimensions are reference data, please measure and calculate according to the actual product size.
- When installing, wipe and clean the surface of the niche and the reserved installation position on the wall. Put glass glue on the between the back of the edge of the niche and the wall, and snap the niche into a reserved

installation position on the wall. The frame of the niche can be covered an the wall tiles.

- Products containing chlorine or acids, such as cement residue remover or similar, often contain aggressive chemicals. These can corrode the surface of the product. Bleaches or silver cleaning agents are also unsuitable for care. When using tile and joint cleaners, the product must subsequently be cleaned with adequate amounts of clear water. The product cannot be cleaned with abrasive cleaners and / or pointed or abrasive objects. Clean brushed or ground surfaces always parallel to the grind instead of across it.
- It is not recommended to permanently place products with corrosive steel or aluminum bottoms directly on the stainless steel.

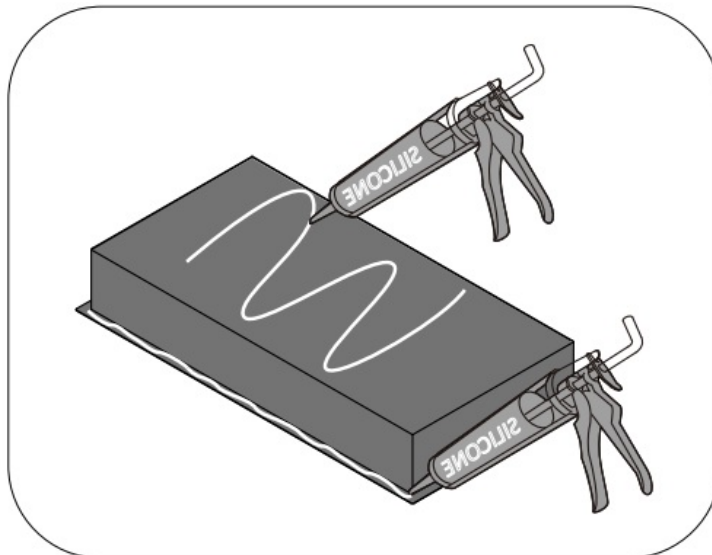
## IMPORTANT NOTES:

Do not use silicone containing acetic acid!

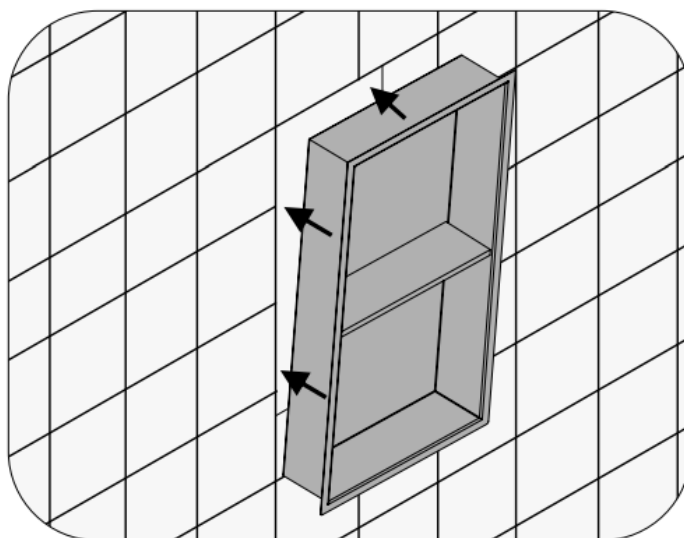


1. Dig a hole in the wall where the niche is to be installed. For dimensions, refer to the technical drawing shown

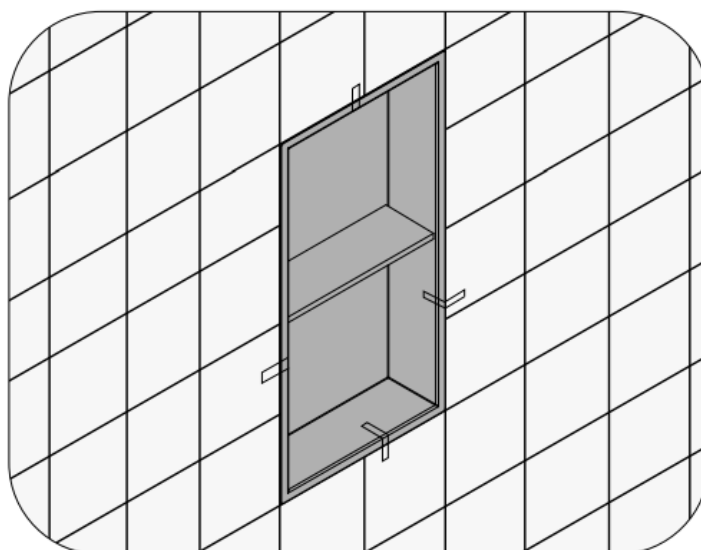
below.Keep an extra 5mm sapace for the notch.Length and width.



2. Seal the edges of the back of the mounting niche.



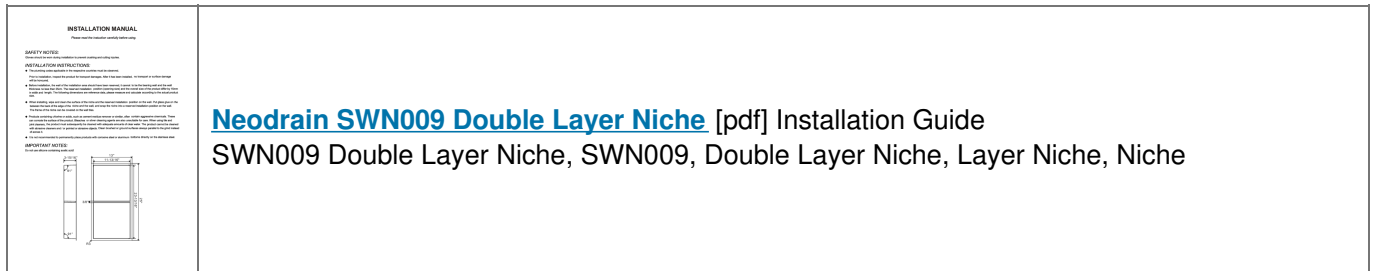
3. Install niches in wall recesses.



4. Use adhesive tape to adhere the niche to the wall and tear off the tape after the glue has been fixed for 24 hours.



## Documents / Resources



## References

- User Manual

[Manuals+](#), [Privacy Policy](#)

This website is an independent publication and is neither affiliated with nor endorsed by any of the trademark owners. The "Bluetooth®" word mark and logos are registered trademarks owned by Bluetooth SIG, Inc. The "Wi-Fi®" word mark and logos are registered trademarks owned by the Wi-Fi Alliance. Any use of these marks on this website does not imply any affiliation with or endorsement.