



Contents [[hide](#)]

[1 Neocom Software Wave PTX Dispatch Over IP Solutions](#)

[2 1. Introduction](#)

[2.1 1.1 About This Guide](#)

[2.2 1.2 About TRBOnet](#)

[2.3 1.3 Contacts](#)

[3 2. Configuring TRBOnet Software](#)

[3.1 2.1 TRBOnet Server](#)

[3.2 2.2 TRBOnet Dispatch](#)

[4 Specifications](#)

[5 FAQ](#)

[5.1 Q: What is the purpose of TRBOnet PLUS Wave PTX?](#)

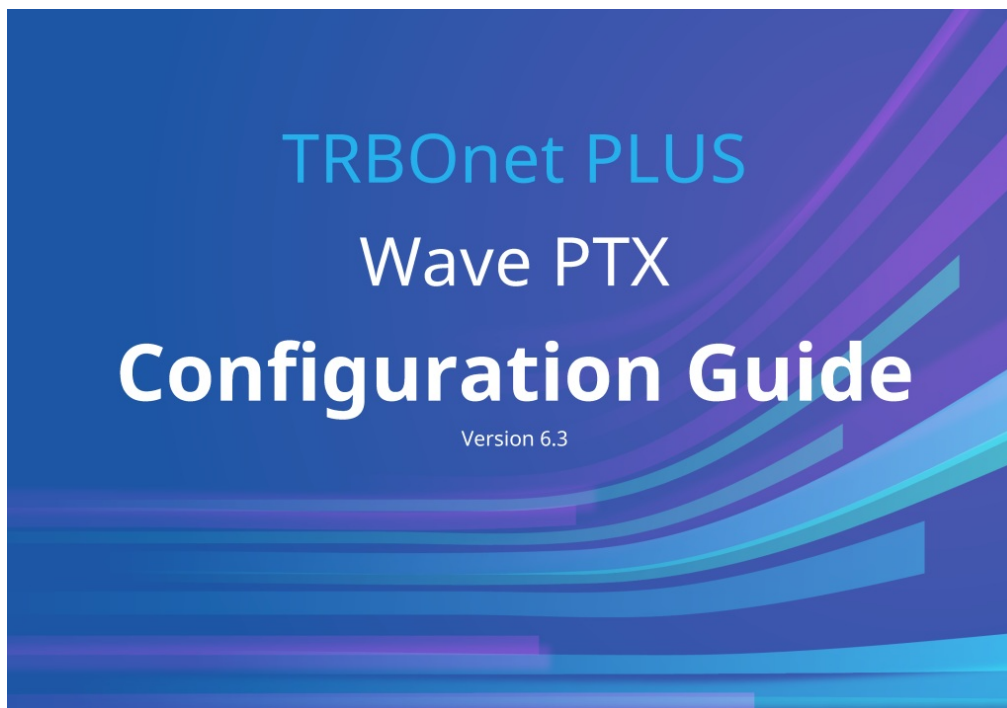
[5.2 Q: How can I contact TRBOnet support?](#)

[6 Documents / Resources](#)

[6.1 References](#)

[7 Related Posts](#)

Neocom Software Wave PTX Dispatch Over IP Solutions



USER GUIDE

The TRBOnet PLUS Wave PTX is a Push-to-Talk (PTT) service that integrates phones, computers, and radios for seamless communication. It is designed for administrators setting up MOTOTRBO Dispatch over IP solutions.

1. Introduction

1.1 About This Guide

This document is intended for administrators setting up evaluation and proof-of-concept deployments of MOTOTRBO Dispatch over IP solutions. The document describes the minimum steps required to integrate Wave PTX service into TRBOnet software.

WAVE PTX is a Push-to-Talk (PTT) service that connects phones, computers, and radios together.

1.2 About TRBOnet

TRBOnet is a suite of professional applications for MOTOTRBO digital two-way radio networks. TRBOnet manages voice and data communication paths across network endpoints. It provides a unified graphical dispatcher workbench interface for the entire range of workforce fleet management tasks.

For more information about TRBOnet products, refer to our website.

1.3 Contacts

Region	Phone	Email & Support
EMEA	+44 203 608 0598	info@trbonet.com — general and commercial inquiries
Americas	+1 872 222 8726	support@trbonet.com — technical support
APAC	+61 28 607 8325	https://trbonet.com/kb/ — online knowledge base

2. Configuring TRBOnet Software

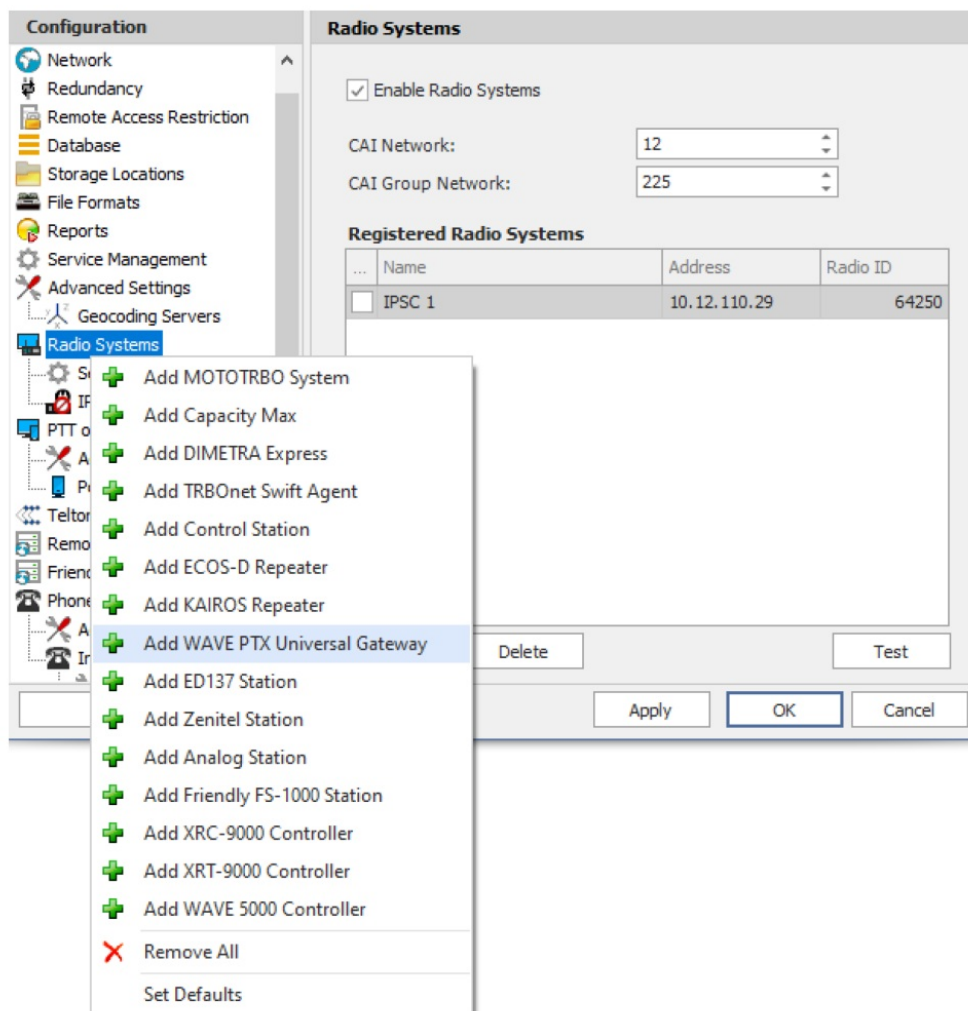
This section describes how to configure TRBOnet software.

2.1 TRBOnet Server

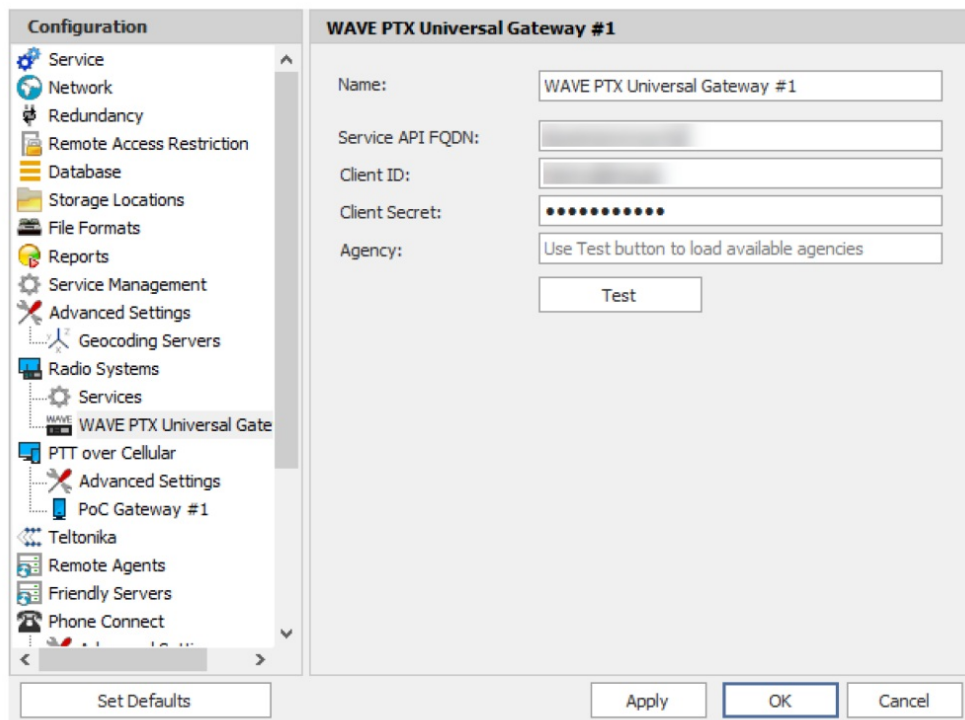
- Run TRBOnet Server.

Note: Make sure that your TRBOnet Software license includes Wave PTX.

- In the Radio Systems pane, click Add. Or, in the Configuration pane, right-click Radio Systems.



In the drop-down menu, click Add WAVE PTX Universal Gateway. The gateway is used to send and receive GPS locations, online statuses, and text messages from Wave devices.



In the Wave PTX Universal Gateway pane, specify the following Wave gateway-related parameters:

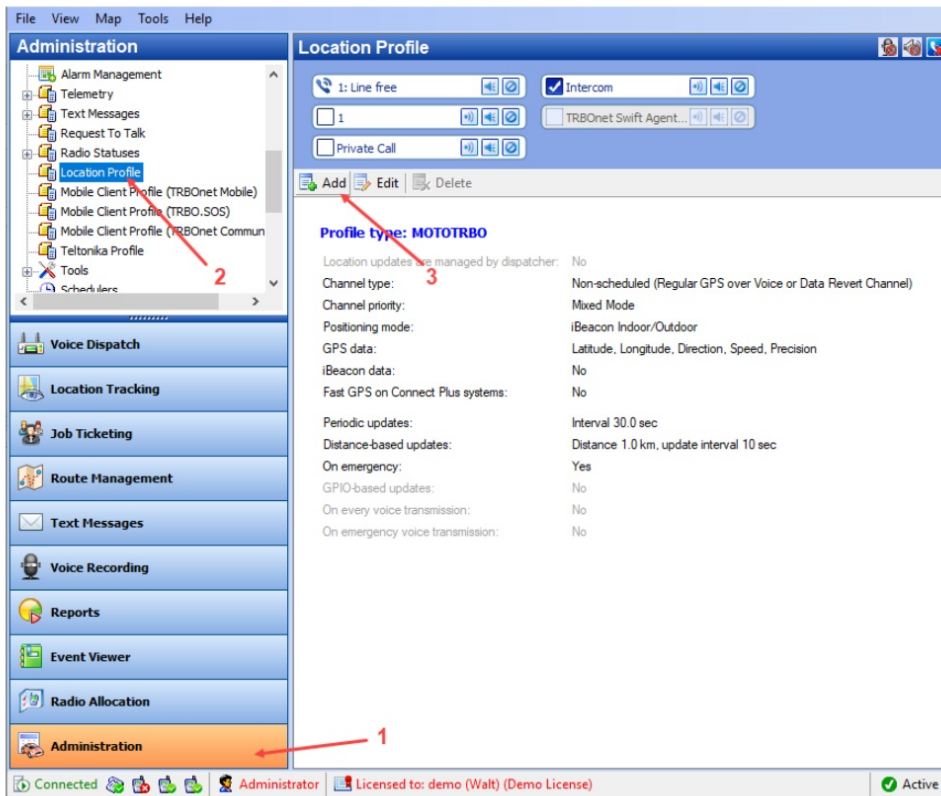
- **Name** Enter a name for the Wave PTX gateway. This name will be displayed in the Dispatch Console.
- **Service API FQDN** Enter the fully-qualified domain name of the service API.
- **Client ID** Enter the Client ID that will be used for authentication.
- **Client Secret** Enter the Client Secret that will be used for authentication.
- **Agency** Enter the name of the agency that will be used.
- **Test** Click this button and see the list of all available agencies.

2.2 TRBOnet Dispatch

- Run TRBOnet Dispatch.

2.2.1 Location profile for WAVE radios

- Go to Administration (1), Location Profile (2).



- Click Add (3) to add a location profile for WAVE radios.

Location Profile (MOTOTRBO)

General Location Updates Management

Name: TLK Profile

Description:

Channel type: Non-scheduled (Regular GPS over Voice or Dat...)

Channel priority: Mixed Mode (recommended)

Protocol type: Mixed Mode (recommended)

Positioning mode: LMR Channel

GPS data: ☒ Latitude, Longitude, Precision, Direction, Speed

iBeacon data: ☐ Major, Minor

Number of iBeacons: 1

Fast GPS on Connect Plus systems: ☐

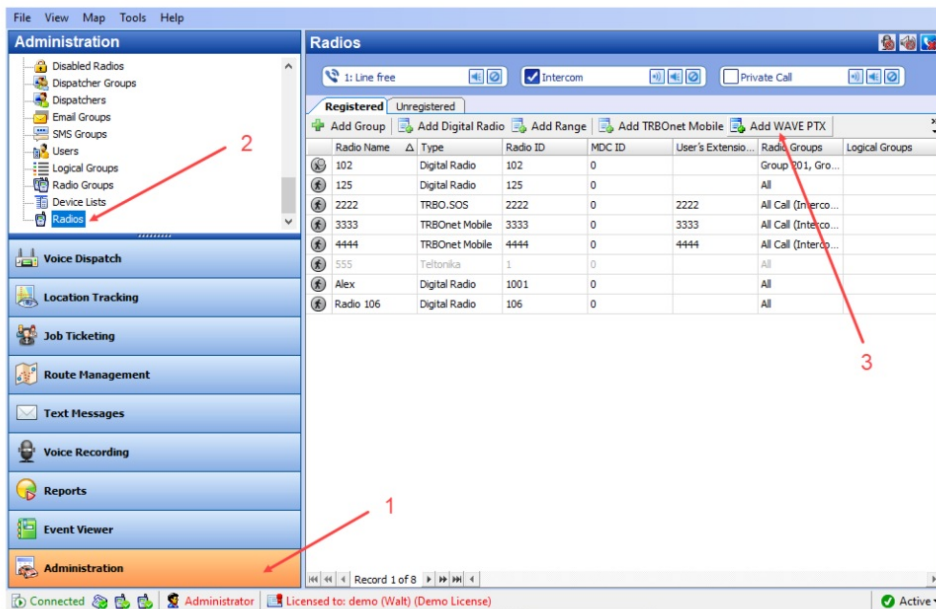
OK Cancel

Channel priority Select either Mixed Mode or Broadband Channel.

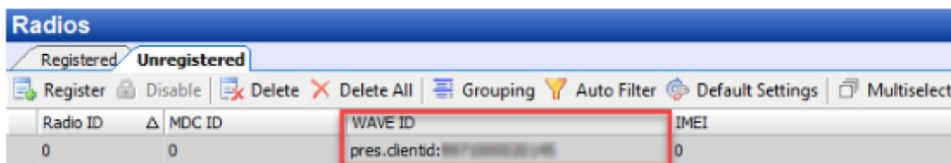
- Mixed Mode Select this option if the WAVE radio is a device that operates on both LMR and broadband networks (ION, etc.).
- Broadband Select this option if the WAVE radio is a device that operates on broadband networks only (WAVE PTX, WAVE TLK, EVOLVE, etc.).

2.2.2 Adding WAVE radios

- Go to Administration (1), Radios (2).



- Click Add WAVE PTX (3) to add a new WAVE PTX Radio. OR:
- Click the Unregistered tab and find the radio with the populated WAVE ID.



On the General tab, specify the following settings:

WAVE PTX

General | Logical Groups | Additional | SIP Account | Cameras | Teltonika

Radio Name:

Radio ID: WAVE ID:

Radio Groups: +

Home Group: +

Use icon: + -

Extended Device: Test

Location Service

Location Source:

Location Profile: +

☒ Location Enabled

Telemetry Service

TLM Source:

TLM Profile: +

Text Messages Service

[Hide Advanced Settings](#)

OK Cancel

- **Radio ID:** Specify a Radio ID for the WAVE PTX radio. This ID is used to call this radio or send a text message to it.
- **WAVE ID:** Enter the WAVE ID (if not automatically populated) that corresponds to the user registered in the WAVE server's user database. This ID is used to send or receive data through the Wave PTX Universal Gateway.
- **Location Profile:** Select the specific location profile. See section 2.2.1, Location profile for WAVE radios.

Specifications

- Product: TRBOnet PLUS Wave PTX
- Configuration Guide Version: 6.3
- Last Revision Date: 30 April 2025
- Manufacturer: Neocom Software



USA Office

Neocom Software

150 South Pine Island Rd., Suite 300

Plantation, FL 33324, USA

Sales

EMEA: +44 203 608 0598

Americas: +1 872 222 8726

APAC: +61 28 607 8325

www.trbonet.com

info@trbonet.com

FAQ

Q: What is the purpose of TRBOnet PLUS Wave PTX?

A: TRBOnet PLUS Wave PTX is a Push-to-Talk (PTT) service that connects phones, computers, and radios together for seamless communication.


Q: How can I contact TRBOnet support?

A: You can reach TRBOnet support via email at **support@trbonet.com** or

visit their online knowledge base at

<https://trbonet.com/kb/> for technical assistance.

Documents / Resources

	<p>Neocom Software Wave PTX Dispatch Over IP Solutions [pdf] User Guide</p> <p>e</p> <p>TRBOnet PLUS Wave PTX, Wave PTX Dispatch Over IP Solutions, Wave PTX, Dispatch Over IP Solutions, IP Solutions, Solutions</p>
---	---

References

- [User Manual](#)

Related Posts



[neocom software TRBOnet PLUS Wave PTX User Guide](#)

TRBOnet PLUS Wave PTX Configuration Guide Version 6.2 Last revised on 20 December 2023 USA Office Neocom Software...



[SILICON LABS Zombie Z-Wave Nodes Software Instruction Manual](#)

Removing Zombie Z-Wave nodes 1. Download SiLabs' Z-Wave Software Development Kit and install it. 2. Plug in your...



[motorola TLK 150 Wave PTX Two Radio User Guide](#)

SOLUTIONS TLK 150 Quick Reference Guide
MN006891A01 MN006891A01-AA
<https://waveoncloud.com/>

<https://learning.motorolasolutions.com/> MOTOROLA, MOTO, MOTOROLA SOLUTIONS, and the...

[motorola TLK 150 Wave PTX Two Way Radio User Guide](#)

Quick Reference Guide MN007307A01-AA <https://waveoncloud.com/>
<https://learning.motorolasolutions.com/> MOTOROLA, MOTO, MOTOROLA SOLUTIONS,



and the Stylized M Logo are trademarks or...

neocom

software

Dispatch Over IP Solutions, IP Solutions, neocom software, Solutions, TRBOnet PLUS Wave PTX, Wave PTX, Wave PTX
Dispatch Over IP Solutions

Leave a comment

Your email address will not be published. Required fields are marked *

Comment *

Name

Email

Website

☐ Save my name, email, and website in this browser for the next time I comment.

Post Comment

Search:

e.g. whirlpool wrf535swhz

Search

This website is an independent publication and is neither affiliated with nor endorsed by any of the trademark owners. The "Bluetooth®" word mark and logos are registered trademarks owned by Bluetooth SIG, Inc. The "Wi-Fi®" word mark and logos are registered trademarks owned by the Wi-Fi Alliance. Any use of these marks on this website does not imply any affiliation with or endorsement.