

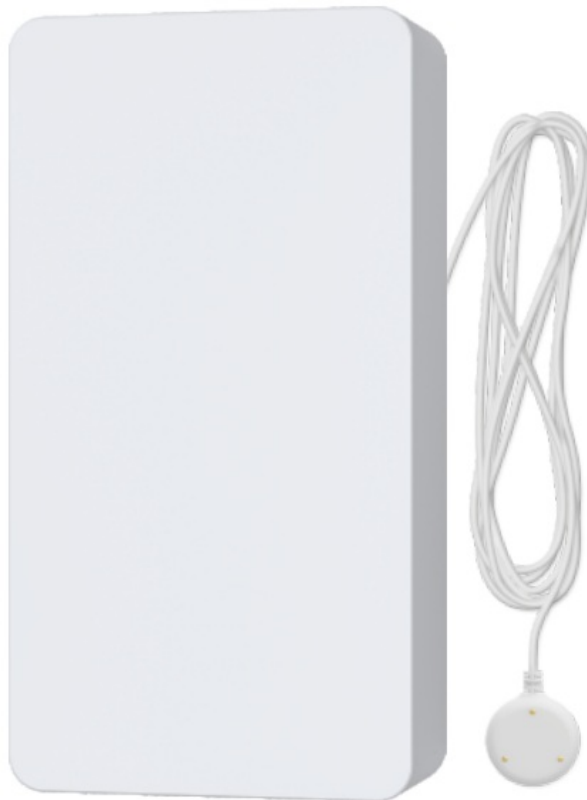


NEO NAS-WS05B Zigbee Water and Flood Sensor User Guide

[Home](#) » [NEO](#) » NEO NAS-WS05B Zigbee Water and Flood Sensor User Guide 

NEO

WATER SENSOR
USER GUIDE



ZIGBEE

Contents

- [1 Feature & Specifications](#)
- [2 LED State](#)
- [3 Get Started](#)
- [4 Add ZigBee Controller](#)
- [5 Add Device](#)
- [6 Main User Interface](#)
- [7 Advanced Features](#)
- [8 Documents / Resources](#)
- [9 Related Posts](#)

Feature & Specifications

Detect water leakage and push alarm to smartphone

App remote control

Power supply: AA LR6 1.5V * 2PCS

Operating current: 58mA

Standby (dormant) current: 2.5uA

Operating temperature: 0°C ~ 50°C (32 °F ~ 122 °F)

Working humidity: 20% ~ 85%

Comprehensive number of work: 5,000

Wireless frequency: 2.4GHz

Communication protocol: Zigbee 3.0

Network protocol: Zigbee IEEE 802.15.4

Size: 82mm x 42mm x 16mm

Power change

Power supply	Full power	High power	low battery	Units
AA 1.5V * 2	>2.90	>2.82	<2.70	V

LED State

Device Status	LED State
Pairing mode	Indicator flashes 2times/second
Reset	Long press for 6s

Function description:

1. Free IOS and android apps;
2. After the water leakage alarm triggers, the phone can receive the push via APP;
3. Equipment can be shared with others,support multi-users to modify the device and receive the push;
4. Linkage with other Wi-Fi product settings;
5. Using a Wi-Fi signal of 2.4GHz, the maximum distance can reach 55M;

Note:

When the sensor is triggered, the sensor will continuously push alarm message every 3s until the sensor is out of

triggering;

Get Started

1. Download APP

Download the “Smart life” app from APP Store or Google Play to your mobile.



<http://smartapp.tuya.com/smartlife>

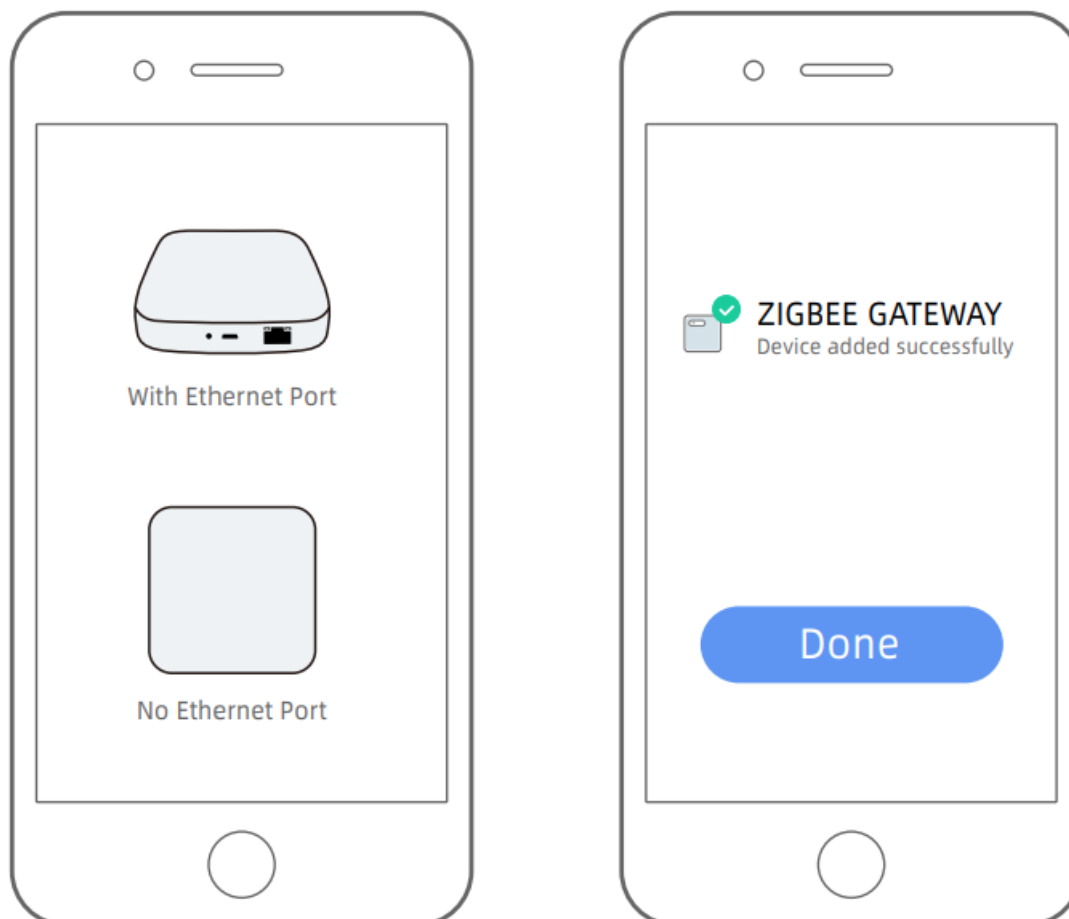
2. Register and Login

A.Launch the “Smart life” app.

B.To register,enter your mobile phone number or email address,create a password ,then login to the app.

C.Login if you have an account already.

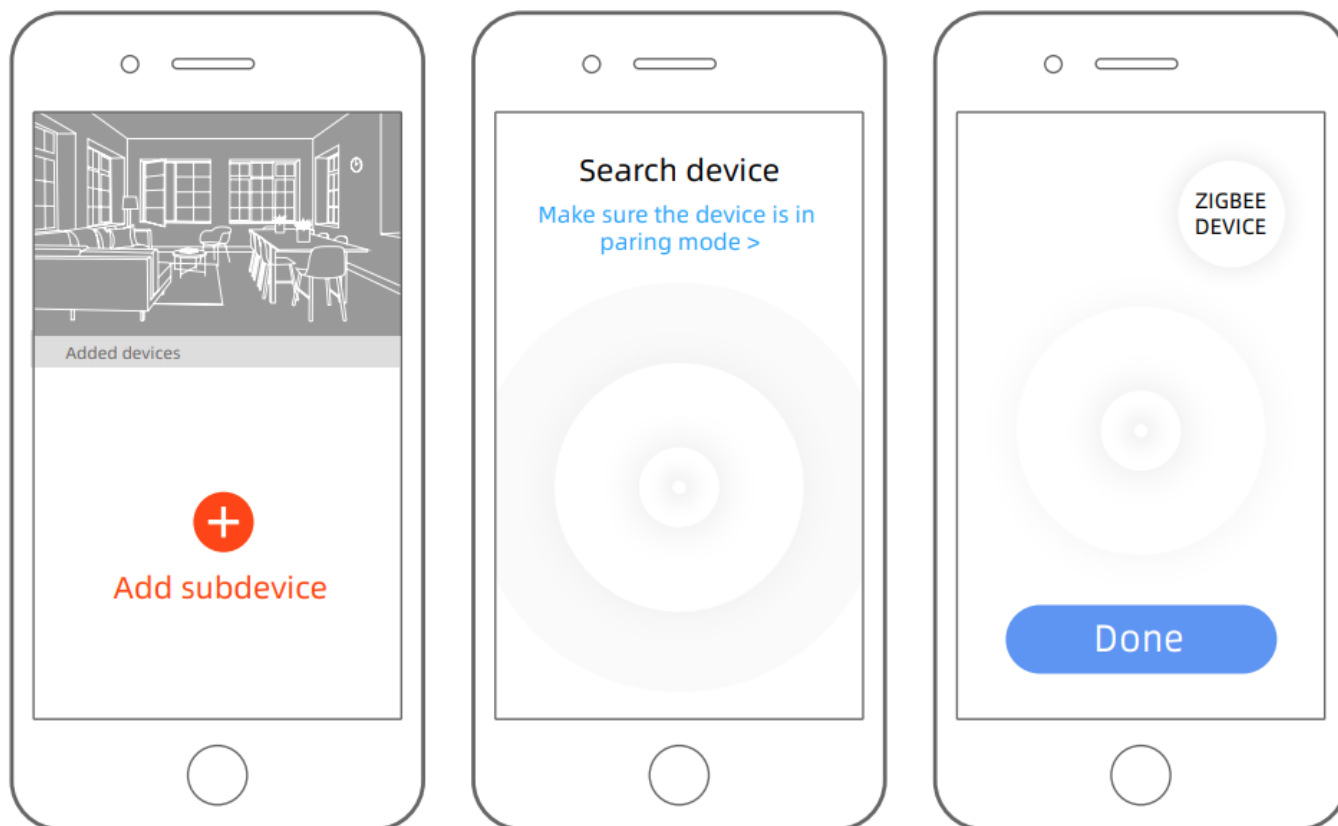
Add ZigBee Controller



Note: The diagram is for reference only. (UI maybe different in other APP version)

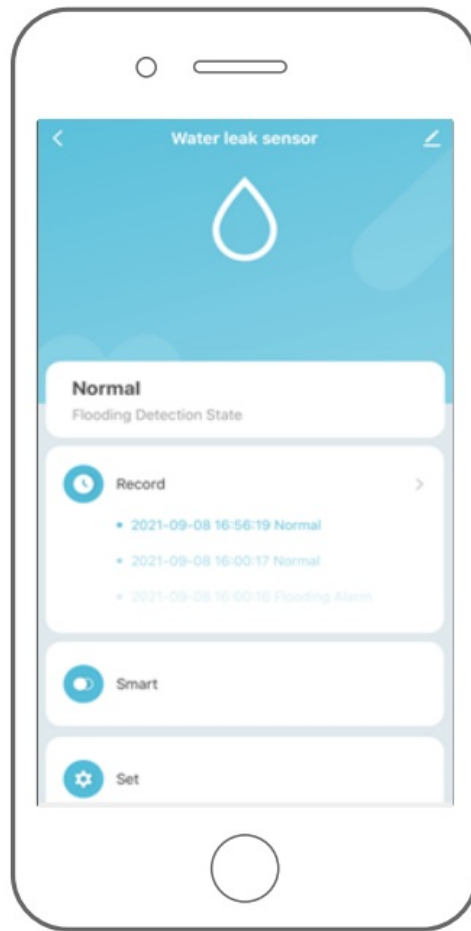
Add Device

Add the ZigBee Sub-device.(Reset first before configuration)



Note: The diagram is for reference only. (UI maybe different in other APP version)

Main User Interface



Note: The diagram is for reference only. (UI maybe different in other APP version)

Advanced Features

You can experience the various advanced features of the device with the app, just try and do it yourself.

1. alarm records
 1. Equipment record
 2. APP record; go to the message center to view the historical alarm record of the added device
2. power display
3. clear records; clear history by removing devices via APP and adding devices again

OTHER FUCTION

Linkage alarm setting

To connect two Sensors via scene setting.

Device sharing

Allow others to control the device

Push notification

(1)Device push When the push is disable, message records still exist, but push messages will not be received.

(2)All APP push; If push is disabled, all devices in the APP will not push notification, but message records will not be affected.

Remove device

Restore default settings; Delete and add the device again to clear the record by APP.



Smart Home Device contains WiFi smart device,Z-Wave device and ZigBee device,give you more choices to create a new smart life.

Wide application on the living room, kitchen, bedroom,bathroom, garage, garden, yard or basement of your home,office,warehouse,chain store...

Make life smarter and more convenient.



Documents / Resources



[NEO NAS-WS05B Zigbee Water and Flood Sensor](#) [pdf] User Guide

NAS-WS05B, Zigbee Water Sensor and Flood Sensor, NAS-WS05B Zigbee Water and Flood Sensor, Water and Flood Sensor, Sensor, Flood Sensor

[Manuals+](#).