



# NEO NAS TH02 Temperature and Humidity Sensor User Guide

[Home](#) » [NEO](#) » NEO NAS TH02 Temperature and Humidity Sensor User Guide 

## Contents

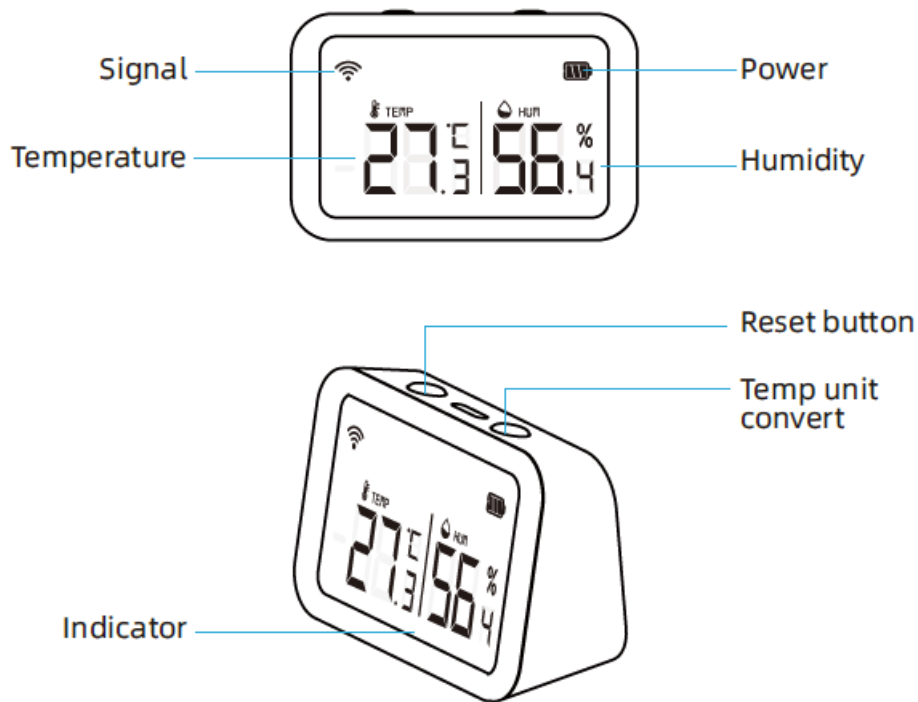
- [1 NEO NAS TH02 Temperature and Humidity Sensor](#)
- [2 Product Configuration](#)
- [3 Feature & Specifications](#)
- [4 LED State](#)
- [5 Get Started](#)
- [6 Add ZigBee Controller](#)
- [7 Main User Interface](#)
- [8 Advanced Features](#)
- [9 Documents / Resources](#)
- [10 Related Posts](#)



**NEO NAS TH02 Temperature and Humidity Sensor**



## Product Configuration



## Feature & Specifications

- **Temperature detection:** humidity detection
- **Battery type:** AA\*2PCS
- **Standby current:** 60.5uA
- **Wireless type:** 2.4GHz
- **Working temperature:** -10°C 60°C (14°F 140°F)
- **Working humidity:** 0% 100%
- **Storage temperature:** -10°C 60°C (14°F 140°F)
- **Storage humidity:** 0% 90%
- **Support protocol:** Zigbee 3.0
- **Network protocol:** Zigbee IEEE 802.15.4

- **Wi-Fi distance:** 55M
- **Size:** 84mm x 55mm x 32mm

## LED State

### NOTE:

1. Reset the device first before configuration.
2. Zigbee device needs to work with Tuya controller

## Get Started

### 1. Download APP

Download the “Smart life” app from APP Store or Google Play to your mobile.

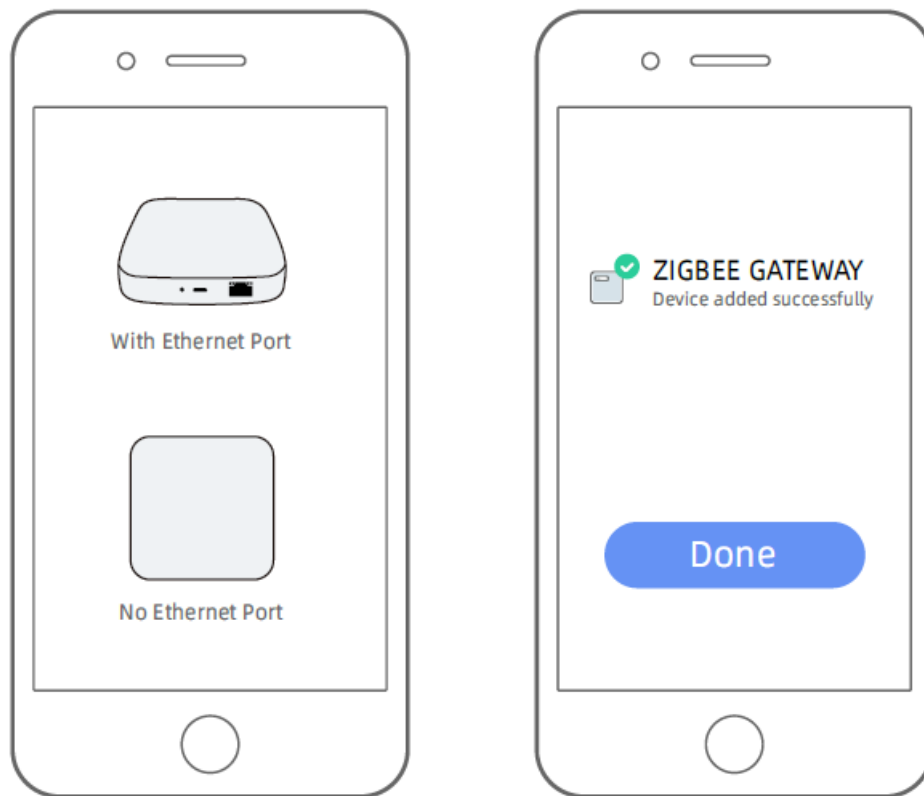


### 2. Register and Login

- **A.** Launch the “Smart life” app.
- **B.** To register, enter your mobile phone number or email address, create a password, then login to the app.
- **C.** Login if you have an account already.

## Add ZigBee Controller

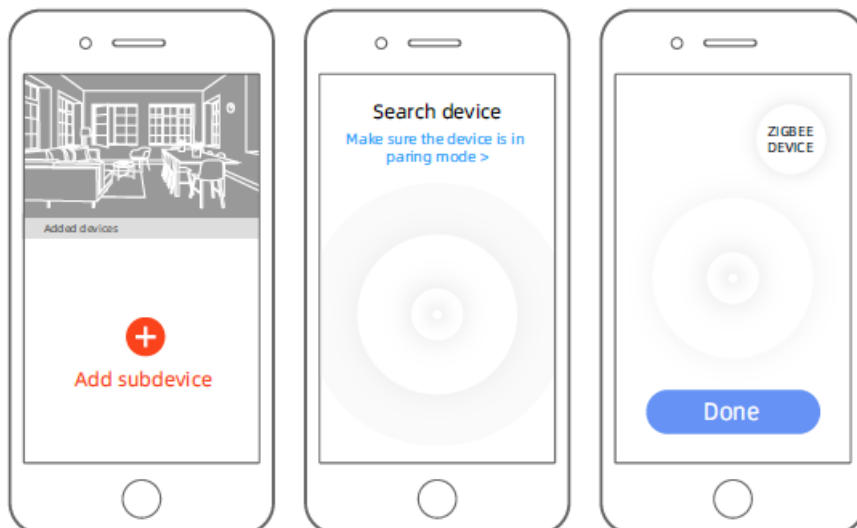
Add Tuya ZigBee controller first and operate with the controller user manual.(Pls notice the wired and wireless version controller).



**Note:** The diagram is for reference only. (UI maybe different in other APP version)

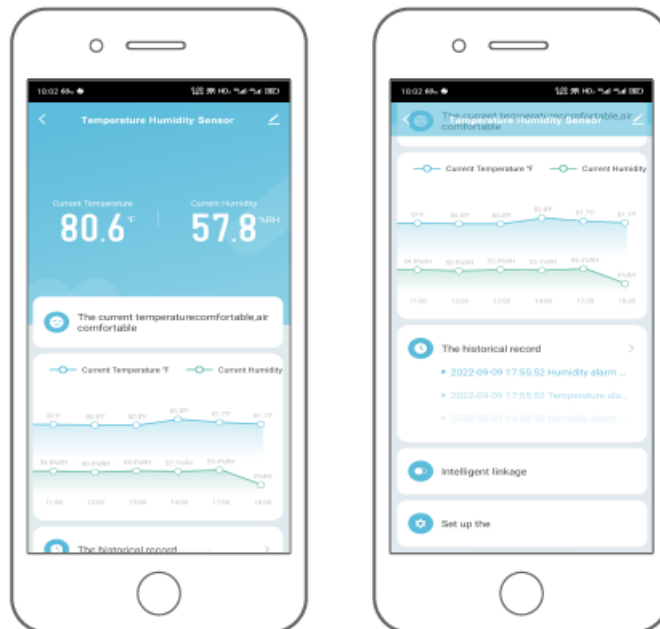
### Add Device

Add the ZigBee device.(Reset first before configuration)



**Note:** The diagram is for reference only. (UI maybe different in other APP version)

### Main User Interface



## Advanced Features

You can experience the various advanced features of the device with the app, just try and do it yourself.

1. Current Temperature
2. Current Humidity
3. **Data curve**

The data curve of temperature, humidity (Able to check the data curve of temperature , humidity according to the date of use)

4. **Alarm record**

historical record:Check all the added devices alarm message in history.

## OTHER FUNCTION

- **Linkage alarm setting**

To connect two Sensors via scene setting.

- **Device sharing**

Allow others to control the device

- **Push notification**

Open/close push notification

- **Remove device**

Restore default settings; Delete and add the device again to clear the record by APP.

Smart Home Device contains WiFi smart device, Z-Wave device and ZigBee device, give you more choices to create a new smart life. Wide application on the living room, kitchen, bedroom, bathroom, garage, garden, yard or basement of your home, office, warehouse, chain store... Make life smarter and more convenient.

## Documents / Resources



**[NEO NAS TH02 Temperature and Humidity Sensor](#)** [pdf] User Guide

NAS TH02, Temperature and Humidity Sensor, NAS TH02 Temperature and Humidity Sensor, Humidity Sensor, Temperature Sensor, NAS-TH02B2