



NEO NAS-CW01W6 4-in-1 Temperature and Humidity Smart Clock Instruction Manual

[Home](#) » [NEO](#) » NEO NAS-CW01W6 4-in-1 Temperature and Humidity Smart Clock Instruction Manual 



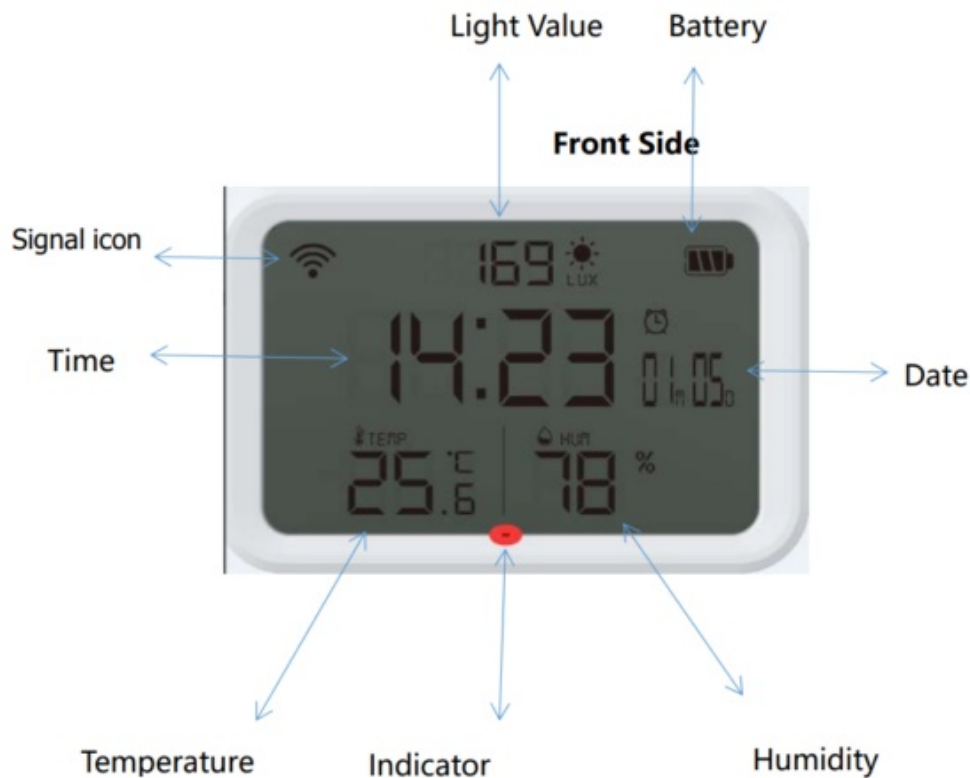
Temperature and Humidity (4 IN
1)



Contents

- [1 NAS-CW01W6](#)
- [2 Specification](#)
- [3 Battery State](#)
- [4 Indicator Status](#)
- [5 Features](#)
- [6 Documents / Resources](#)
- [7 Related Posts](#)

NAS-CW01W6



NOTE: This equipment has been tested and found to comply with the limits for a Class B digital device, pursuant to part 15 of the FCC Rules. These limits are designed to provide reasonable protection against harmful interference in a residential installation. This equipment generates uses and can radiate radio frequency energy and, if not installed and used in accordance with the instructions, may cause harmful interference to radio communications. However, there is no guarantee that interference will not occur in a particular installation. If this equipment does cause harmful interference to radio or television reception, which can be determined by turning the equipment off and on, the user is encouraged to try to correct the interference by one or more of the following measures:

- Reorient or relocate the receiving antenna.
- Increase the separation between the equipment and receiver.
- Connect the equipment into an outlet on a circuit different from that to which the receiver is connected.
- Consult the dealer or an experienced radio/TV technician for help Changes or modifications not expressly approved by the party responsible for compliance could void the user's authority to operate the equipment.

This device complies with Part 15 of the FCC Rules. Operation is subject to the following two conditions:

- this device may not cause harmful interference, and

- this device must accept any interference received, including interference that may cause undesired operation.

The Water Leakage Detector is a Z-Wave™ enabled device and is fully compatible with any Z-Wave™ enabled network. Z-Wave™ enabled devices displaying the Z-Wave™ logo can also be used with it regardless of the manufacturer, and ours can also be used in other manufacturer's Z-Wave™ enabled networks.

This product can be included and operated in any Z-Wave™ network with other Z-Wave™ certified devices from other manufacturers and/or other applications. All non-battery-operated nodes within the network will act as repeaters regardless of vendor to increase the reliability of the network.

Specification

Device WiFi smart clock

Power AA LR6 1.5V * 2PCS

StorageTemp 0°C 50°C (32°F 122°F)

StorageHumidity 0% 80%RH(Noncondensation)

Working Temp 0°C 50°C (32°F 122°F)

WorkingHumidity 0—100%RH(Noncondensation)

Wireless Standard IEEE 802.11b/g/n

Wi-FiDistance 40M

Weight 64g

SleepCurrent 16.5uA

Status Indicator 1 LED

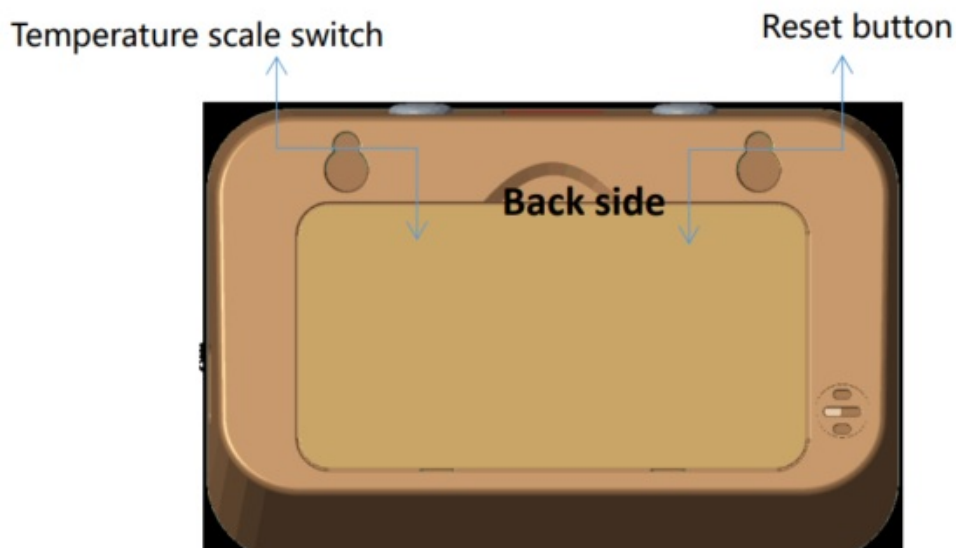
WirelessFrequency 2.4GHz

LightIntensityRange 0 9999Lux

Size 84mm x 55mm x 32mm

BluetoothPairingnetwork: 2.4GHz IEEE801.11b/g/n

The equipment can be hung on
Version 1.0.3 the wall



Battery compartment (open back cover to install battery)

1. There are hanging holes on the back of the device, which can be hung on the wall, cabinet or placed on the desk, windowsill, bedside table, and other places with light
2. The battery must be installed correctly in the battery slot which is marked “+” “-” direction

Battery State

1. 1. Power display has 4 grade

More than 100% full charge is greater than 2.900 full grid 75% medium 2.850-2.900 two grids 50% less power 2.650-2.850 one grid

Lower than 25% low power Lower than 2.650V space Low battery will have alarm and alarm push

Indicator Status

Device Status	Indicator
Internet-connected	LED light off
Smart Wi-Fi Mode	Blink 3 times per second (Bluetooth with network)
AP Mode	Blink 2 times per second (Bluetooth with the network)

Note:

1. Both Smart Wi-Fi mode and AP compatible mode have Bluetooth mode.
2. If the device does not enter the pairing mode after the first power-on, then press the reset button for 6 seconds
3. When the device enters be configured or switches to be configured mode,a prompt tone will be played

Features

1. If the device is successfully connected to the network, the indicator switches from blinking at short intervals to off.
2. Hold down the reset button for more than 6 seconds to disconnect the network and enter the network configuration state.
3. When the device is powered on for the first time, the device does not enter the pairing state automatically.
4. Press the temperature scale switch button to wake up the device. Then the temperature scale switch can be set successfully and reported to the APP.
5. Support Bluetooth pairing, open Bluetooth, and search device automatically.
6. Light value $\pm 20\text{Lux}$ will automatically report data.
7. Light display up to 9999Lux.
8. Temperature and humidity have sensitivity parameters settings, and the data will be reported when the set parameter value is reached.
9. The default time is used when the smart clock is disconnected from the network. After the smart clock is connected to the network, the time can be synchronized.
10. When the device alarm and alarm bell ring, press the reset button and the temperature scale button to stop the alarm.
11. Set a maximum of five-alarm clocks.
12. For the first time, the device will automatically calibrate the time, and the calibration switch must be turned on.
13. When the device is sleeping, you can set the temperature scale, temperature and humidity sensitivity, buzzer switch, and network time adjustment switch in the cache. When the device reports data next time, the data will be reported together with the cache settings.
14. Humidity sensitivity $0.3^{\circ}\text{C} \sim 2.0^{\circ}\text{C}$, humidity sensitivity 5%-10%.

15. Before adjusting parameters and buzzers, ensure that the device is connected to the network.



16. After the device is connected to the network, the signal icon on the LCD is displayed online.



17. After the device is disconnected from the network, the signal icon on the LCD shows that the device is offline



18. The reporting range of illumination value

No.	Illumination Rang (Lux)	Conditions for the illumination range variation (Lux)	Illumination variation description
1	0-99Lux	-+10Lux	1. The lighting value varies in different intervals. The lighting value will change only when the changing conditions of the corresponding interval are met, and the APP will synchronize the lighting value. 2. To determine which range the light value is in, just look at the light value displayed on the device.
2	100-500Lux	?-:+30Lux	
3	500-1000Lux	?-:+50Lux	
4	1000-2000Lux	?-:±100Lux	
5	2000-9999Lux	..?-:+ 200 Lux	

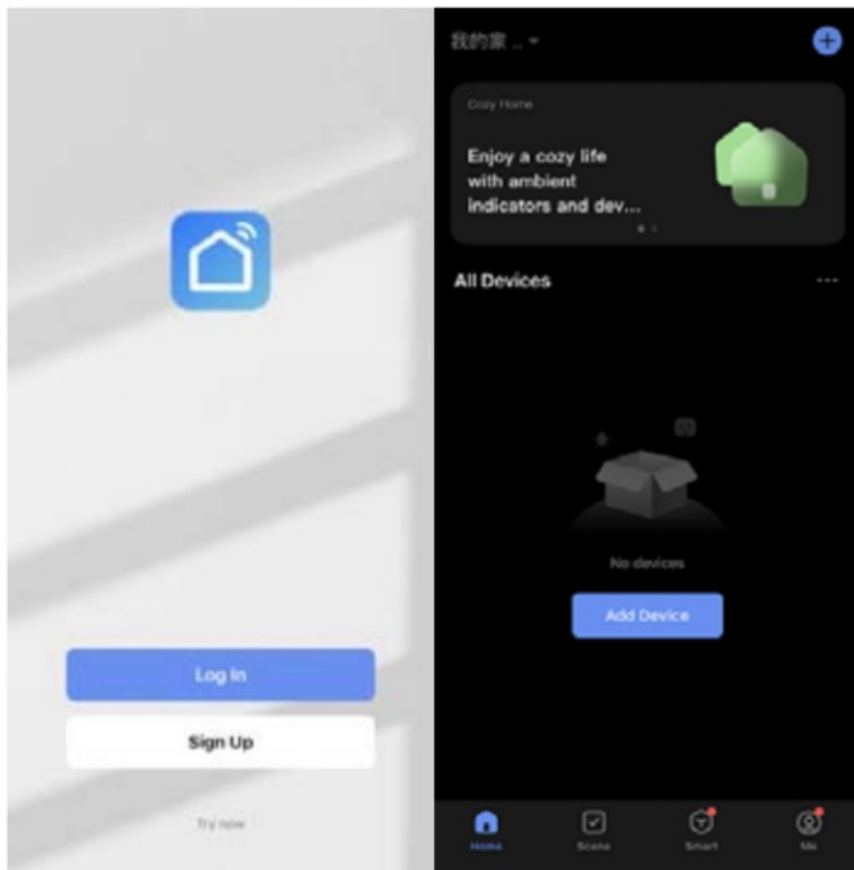
Download APP

1. Android Download "Smart Life" APP from Google Play Store
2. iOS: Download the "Smart Life" APP from Apple Store



<http://smartapp.tuya.com/smartlife>

1. Start the APP, register, and log in

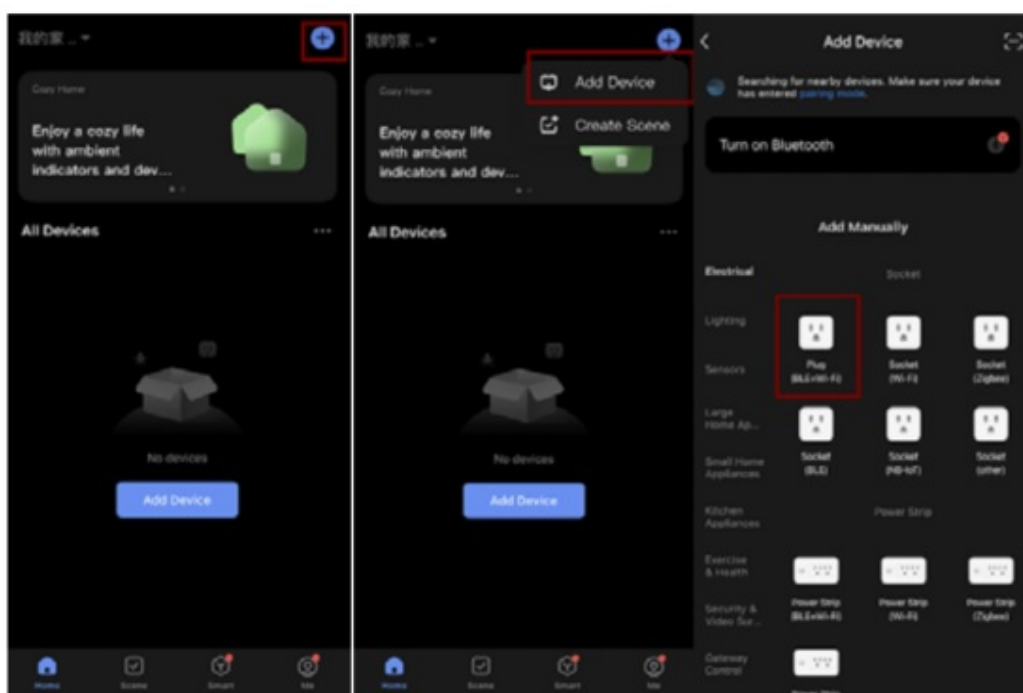


Add Equipment

The device is powered on in Smart wifi mode by default (the indicator blinks at short intervals). If the indicator is off, hold down the reset button for 6 seconds and select the mode corresponding to the indicator to add a device

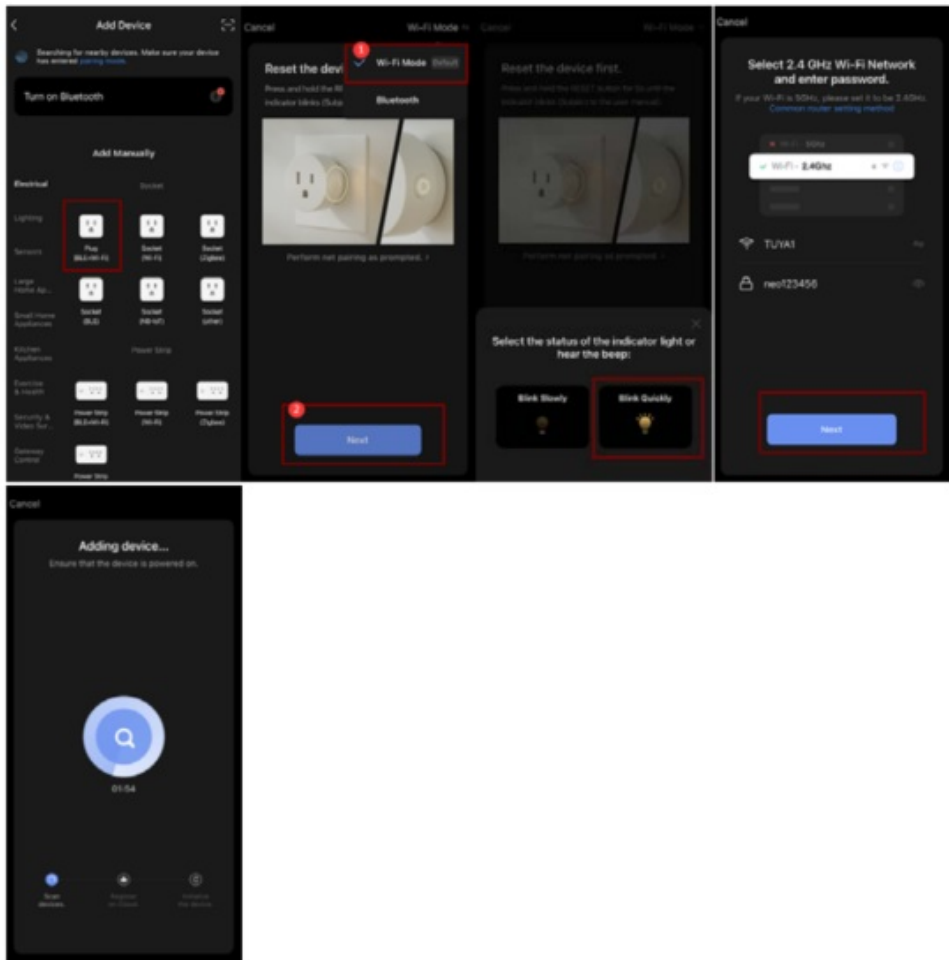
1. Select a device type to add

Note: All Wi-Fi products can be added with any Wi-Fi option. The device only supports 2.4GHz Wi-Fi signal. This manual uses the socket option

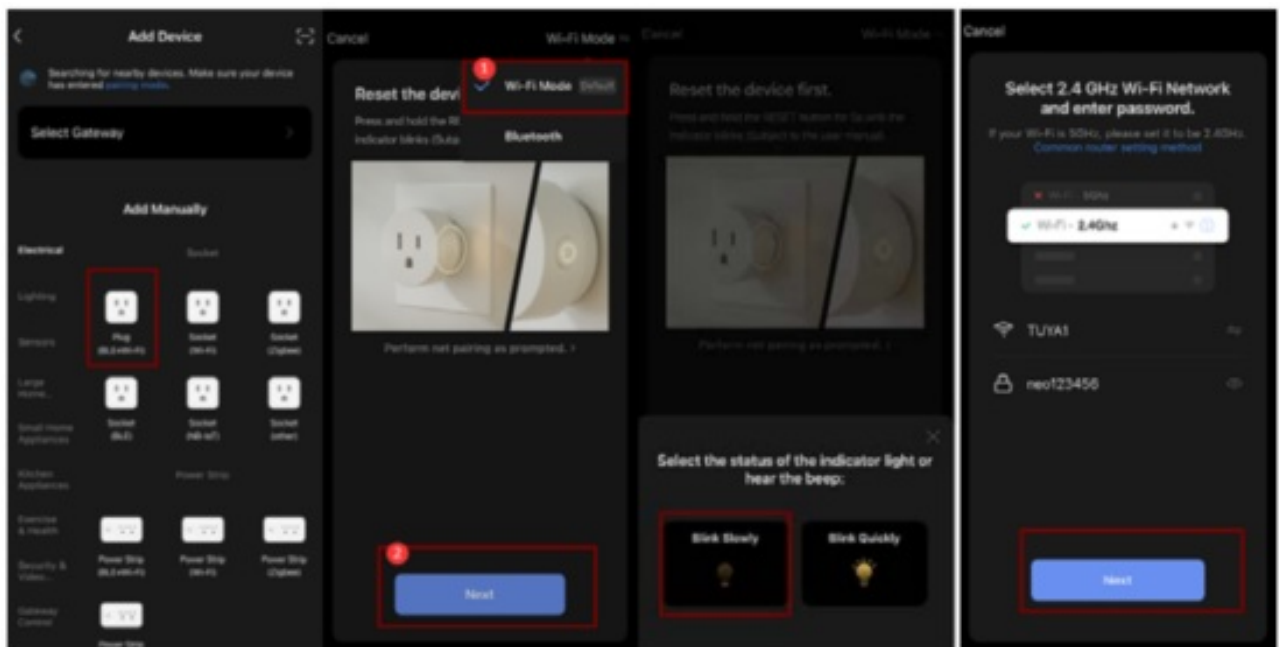


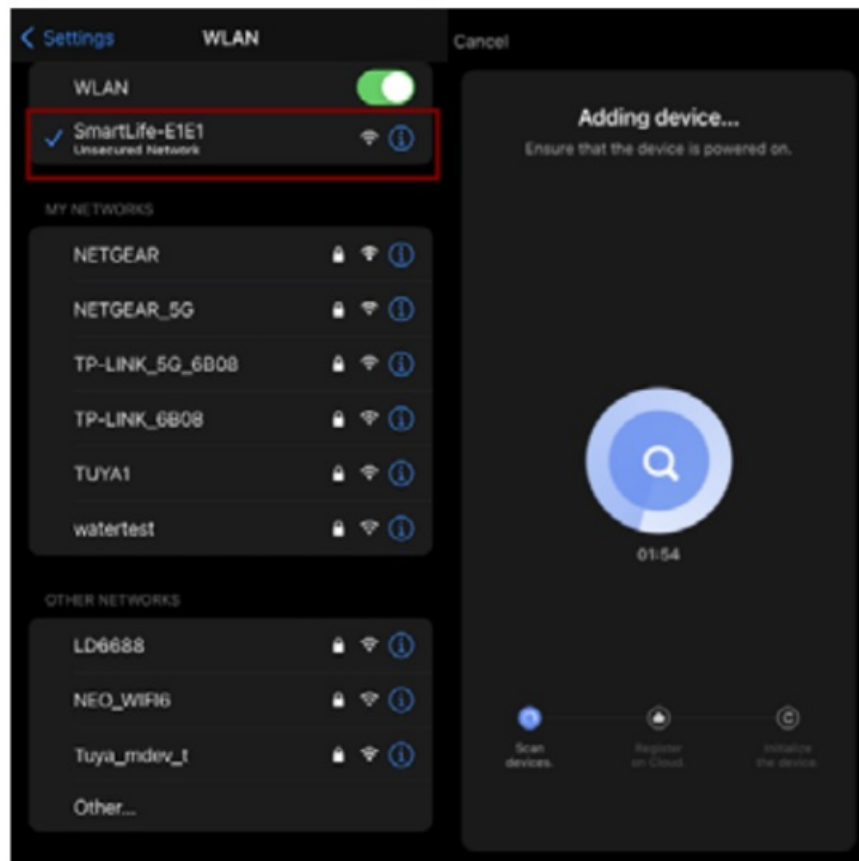
1. Smart config mode: Press the reset button to switch device status until the device changes to Smart Config

mode, and then add (please follow the instructions of the APP).



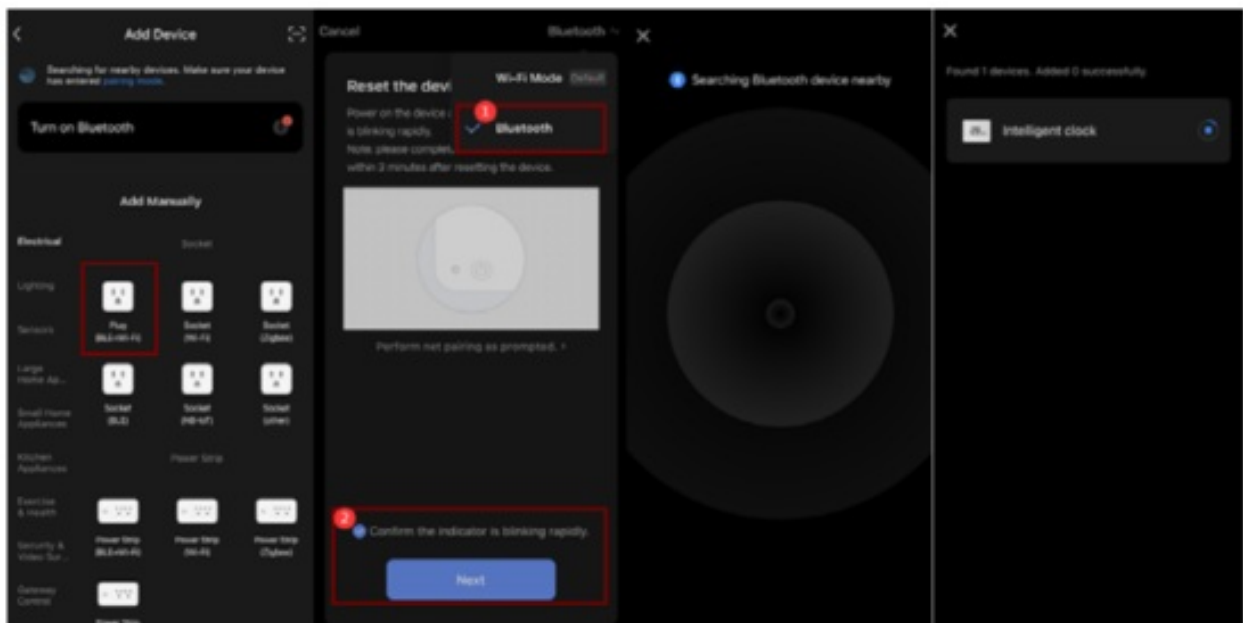
2. AP compatible mode: Press the reset button to switch device status until the device changes to AP mode, and then add the device (please follow the instructions of APP).



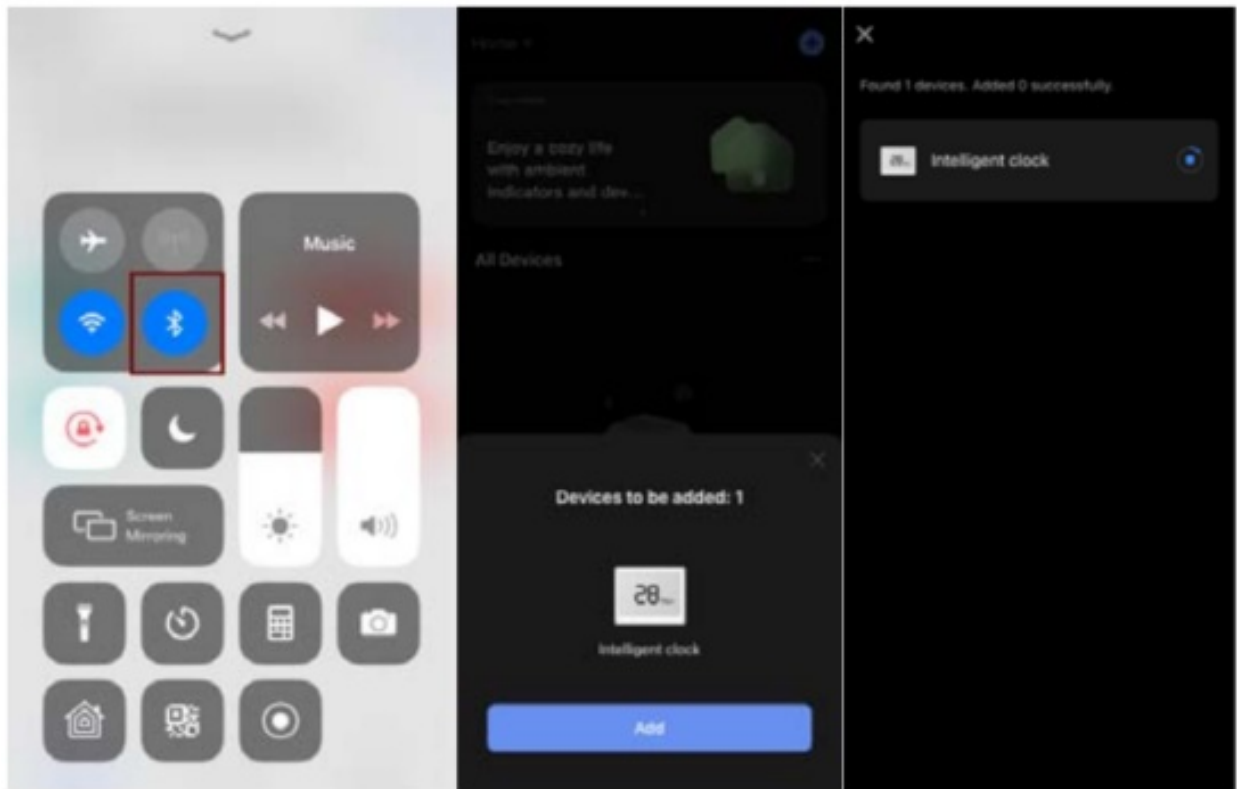


3. Bluetooth Add: Enable Bluetooth to add WiFi temperature and humidity in Bluetooth mode (you can add WiFi temperature and humidity in Bluetooth mode when Smart Config mode and AP mode are to be configured).

1. Bluetooth add method one

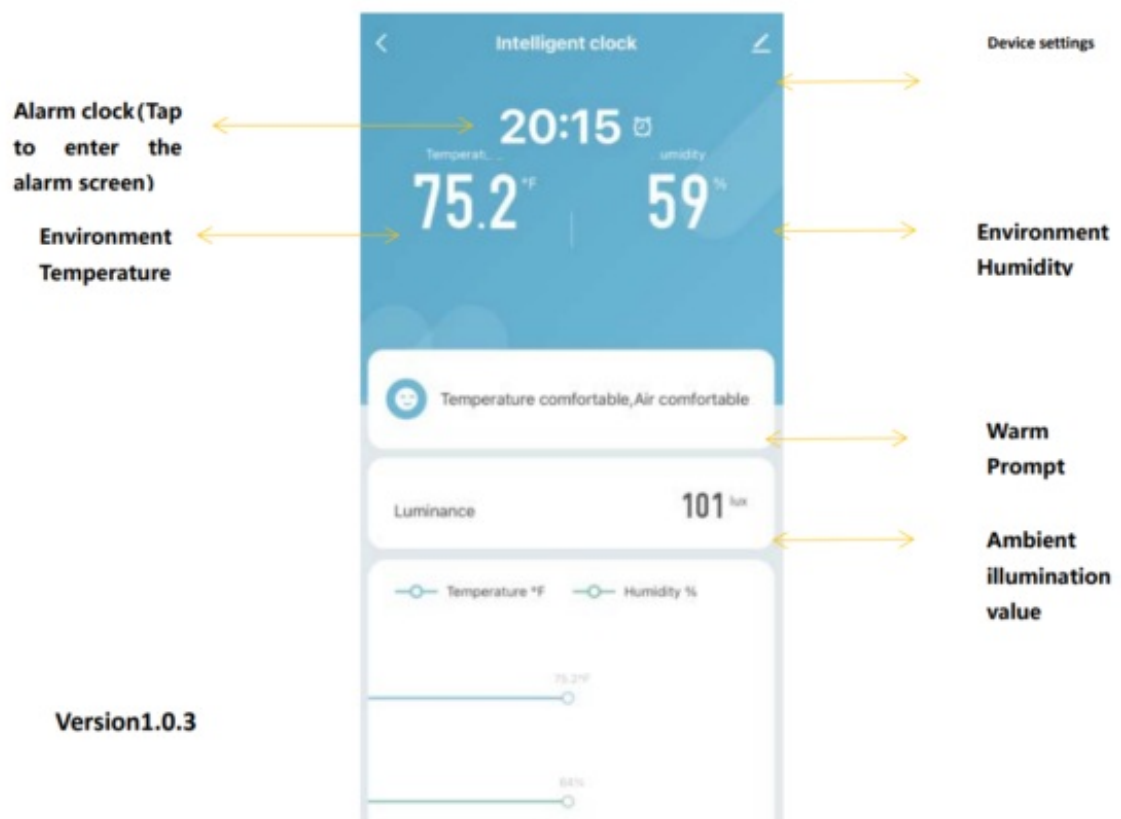


2. Bluetooth add method one Wifi temperature and humidity will be automatically searched by Bluetooth and added

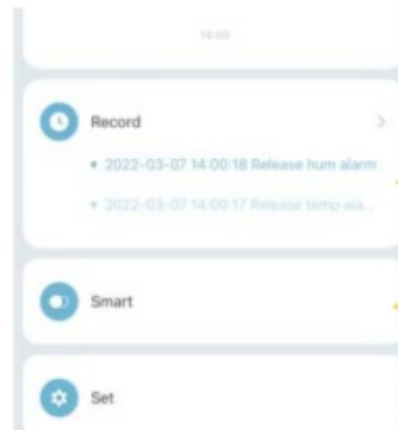


The main function, working state, and record settings

1. APP Main Interface



Temperature,
humidity,
brightness value
data curve



Temperature and
humidity alarm records



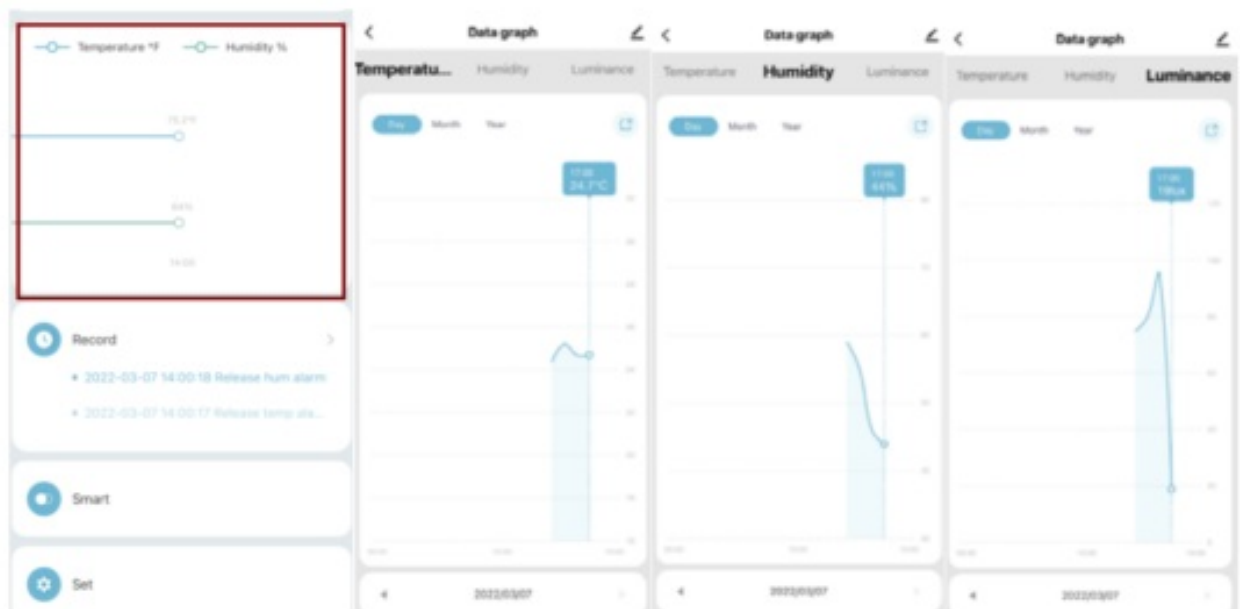
Smart



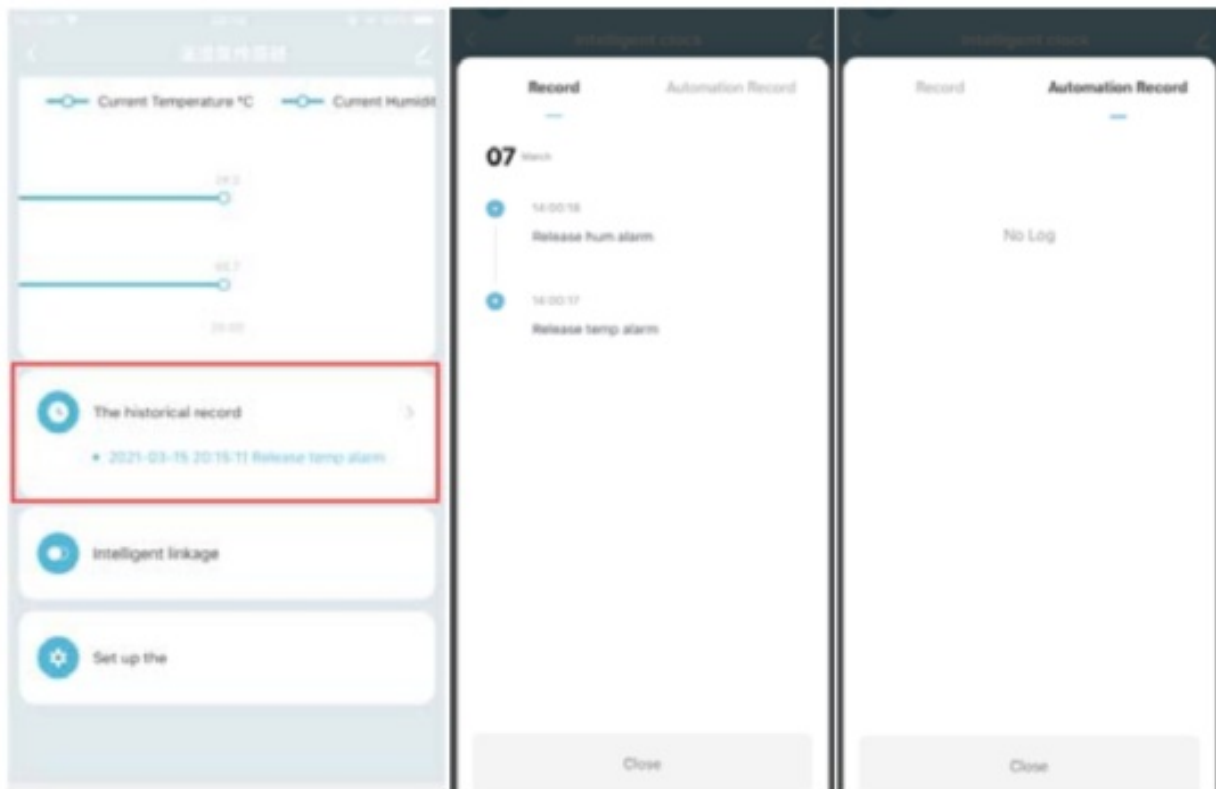
Settings



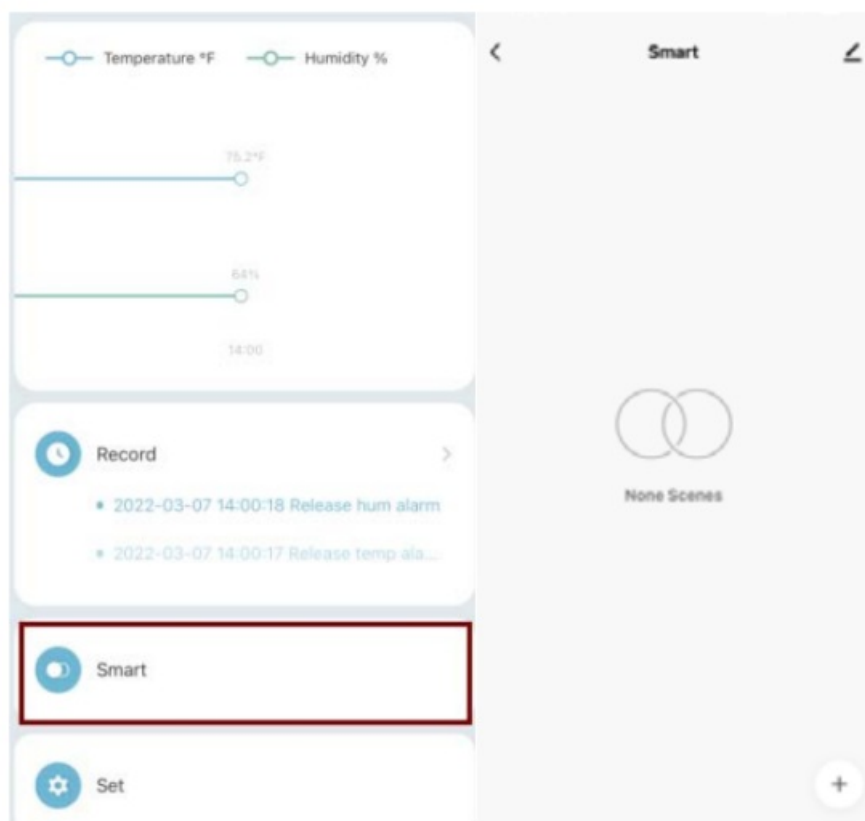
. Temperature, humidity and luminance value data curve (temperature, humidity and luminance value data can be queried on the date of use)



APP Record You can view historical alarm records of added devices in the message center.

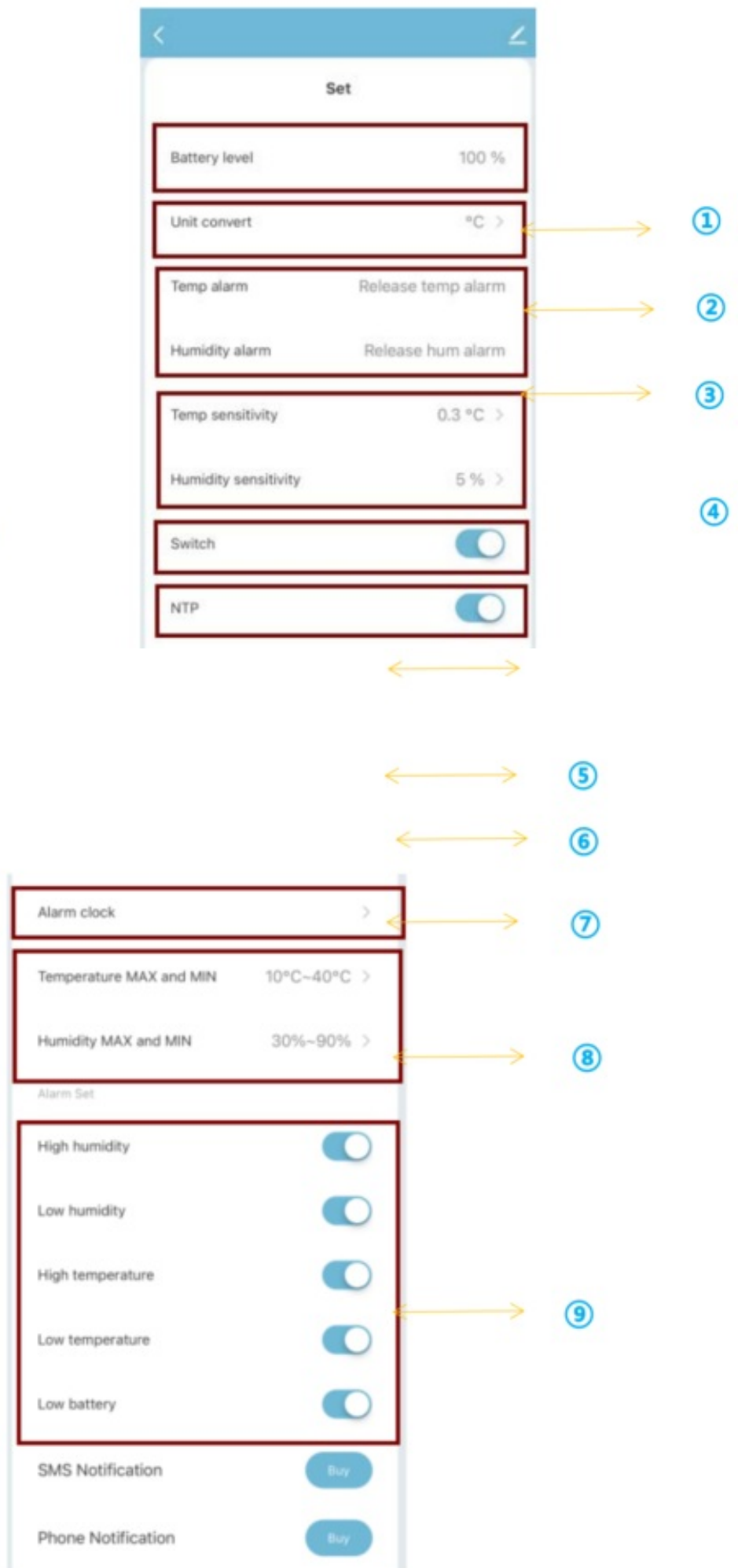


Smart Scene

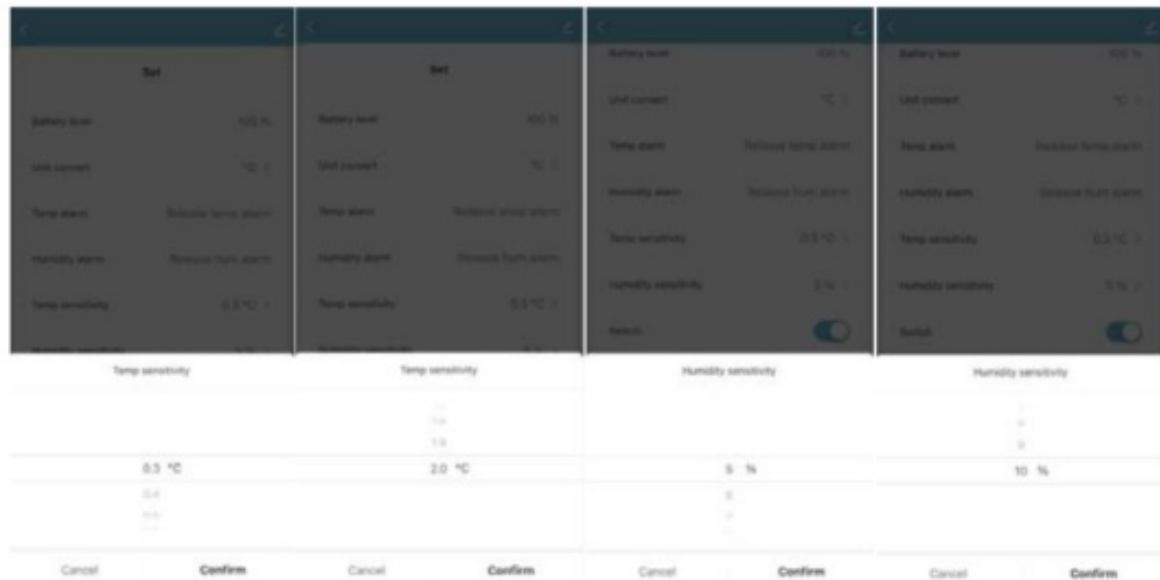


Setting (temperature scale switch, temperature and humidity alarm setting, buzzer switch, temperature and humidity upper and lower limits setting alarm clock settings)

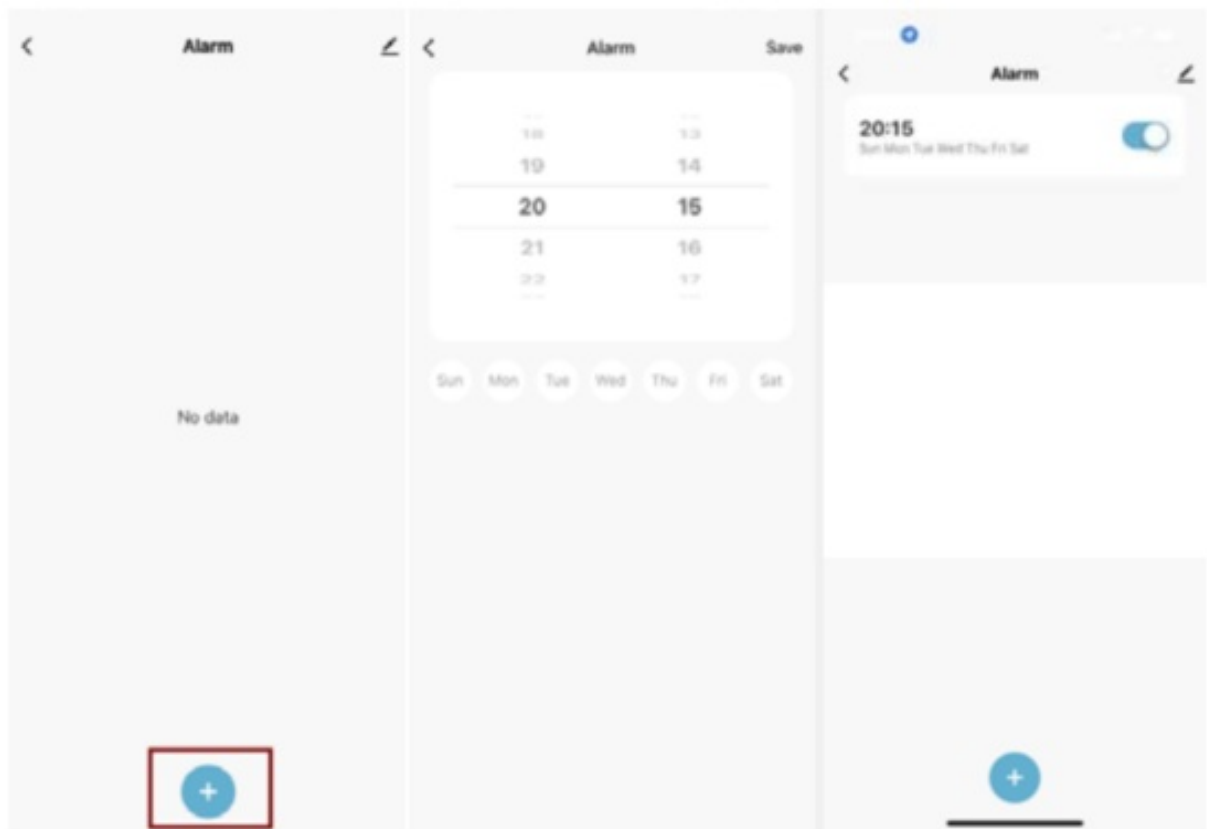
Version1.0.3



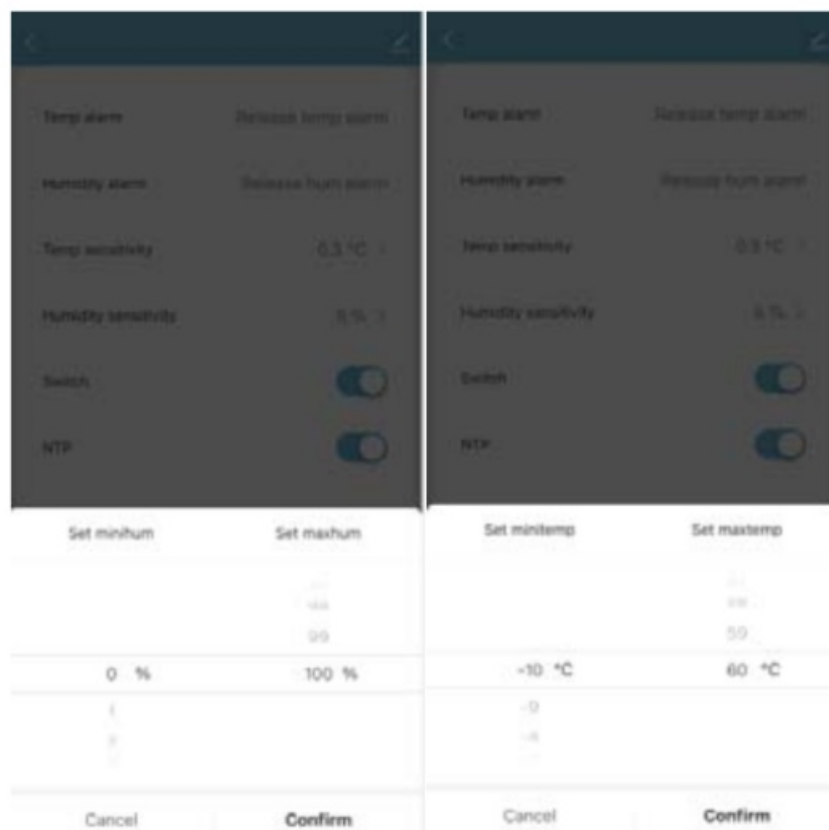
1. Display the current power status of the battery; 25% will be low battery alarm
2. Temperature scale switch: Switch between degrees Celsius and Fahrenheit:
Before setting, press the reset button to wake up the device
3. Temperature and humidity alarm: display temperature and humidity alarm 6 state; (high-temperature alarm, low-temperature alarm, high humidity alarm, low humidity alarm, temperature alarm remove, humidity alarm removed)
4. Temperature and humidity sensitive parameters: data will be reported only when the temperature and humidity value is reached.(Before setting, press the reset button to wake up the device)



5. Buzzer switch: can be set to open and close;(Before setting, press the reset button to wake up the device)
6. Network calibration: When network calibration is enabled, the time will be calibrated each time. When network calibration is closed, the time will not be calibrated (press the reset button to wake up the device before setting).
7. Alarm clock: Set the alarm clock for a different time. The alarm clock rings for one minute. A maximum of five alarm clocks can be set. Press the reset button or the temperature scale button to pause the alarm (press the reset button to wake up the device before setting the alarm).



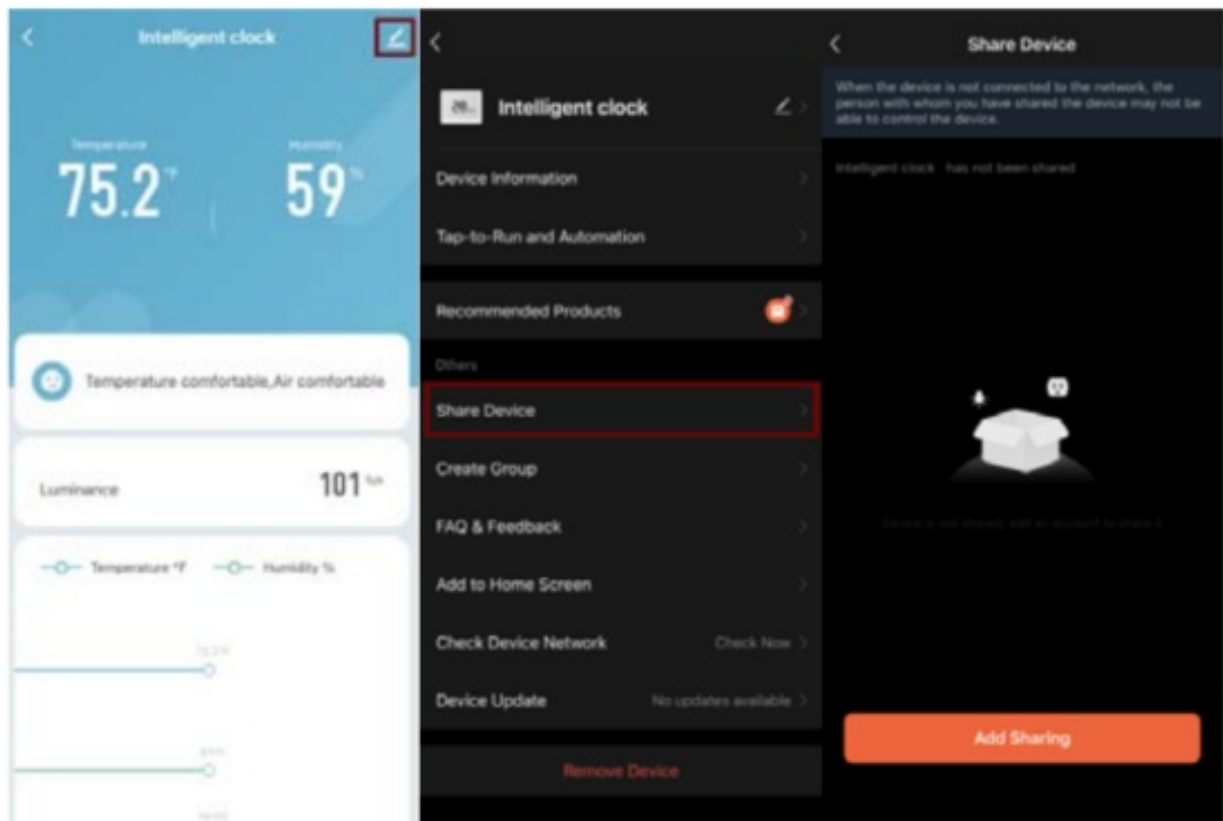
8. Upper and lower limits of temperature and humidity (minimum temperature -10 °C , maximum humidity 60°C, minimum humidity 0%, maximum humidity 100%)



9. Alarm management: temperature and humidity alarm push switch, low electric alarm push switch (press reset button to wake up the device before setting);

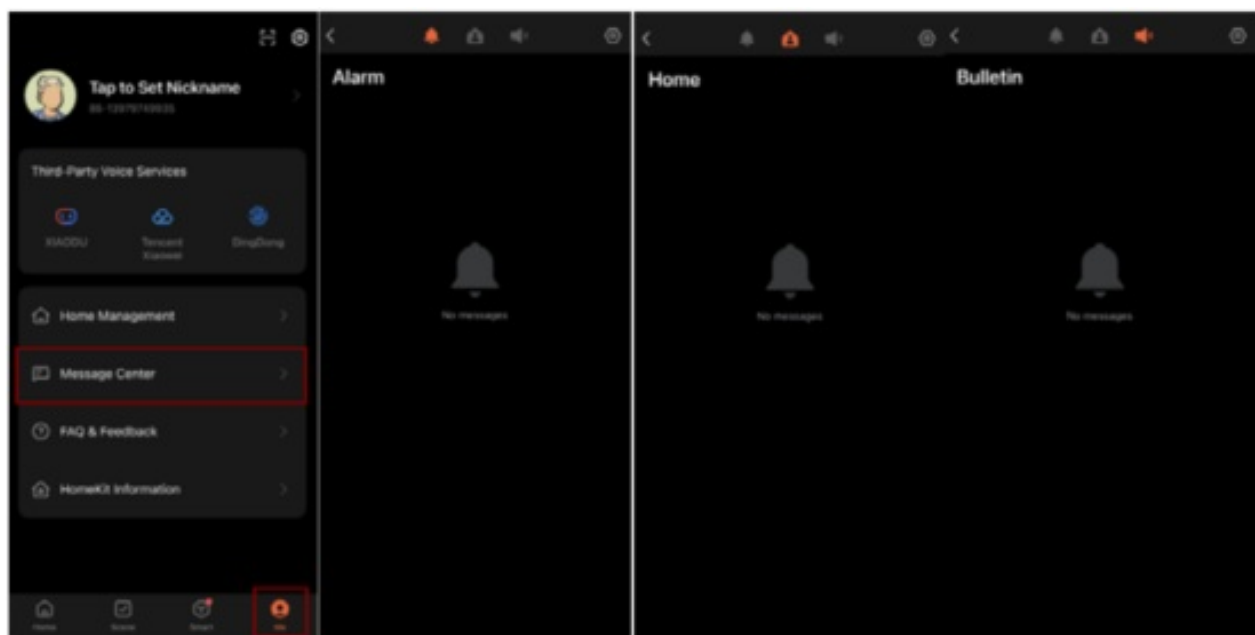
Other Functions

1. Shared Device

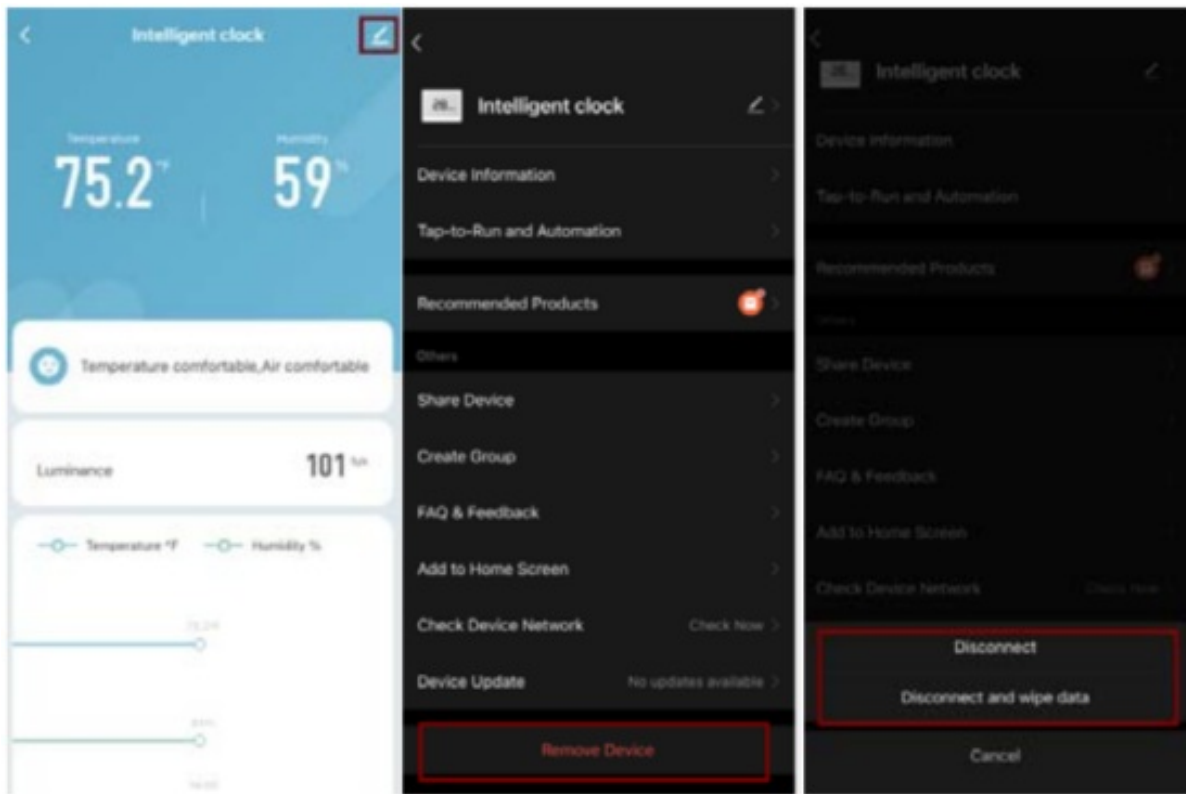


2. Push Management

APP all push; If push is disabled, all devices in the APP will not receive a push, but message records will not be affected.




3. Clear records; Delete the device through the APP and add the device again to clear the historical record



Make Your Home Smarter

Documents / Resources

	<p>NEO NAS-CW01W6 4-in-1 Temperature and Humidity Smart Clock [pdf] Instruction Manual NAS-CW01W6, NASCW01W6, Z52NAS-CW01W6, Z52NASCW01W6, NAS CW01W6 4-in-1 Temperature and Humidity Smart Clock, NAS CW01W6, 4-in-1 Temperature and Humidity Smart Clock</p>
---	--