



Neo Ruler NeoRuler N01 Metric Scale User Guide

[Home](#) » [Neo Ruler](#) » Neo Ruler NeoRuler N01 Metric Scale User Guide 

Contents

- [1 Neo Ruler NeoRuler N01 Metric Scale](#)
- [2 Product Information](#)
- [3 Product Usage Instructions](#)
- [4 Basic](#)
- [5 Start to use](#)
- [6 Calibration](#)
- [7 Main menu](#)
- [8 Scale Ruler](#)
- [9 Customized Scale](#)
- [10 Divider](#)
- [11 Setting](#)
- [12 Accessories](#)
- [13 APP](#)
- [14 WARRANTY](#)
- [15 FCC warning](#)
- [16 Documents / Resources](#)
 - [16.1 References](#)
- [17 Related Posts](#)

NeoRuler

Neo Ruler NeoRuler N01 Metric Scale



Product Information

The NeoRuler is a measuring tool that has 93 built-in scales distributed in 8 scale modes. It comes with a USB-C charging port and a charging light. The device has LED marks, a screen, a select button, a switch button, and a NeoPointer 5 Back/ON-OFF button. Additionally, the device comes with a caliper kit, penholders (1.2mm and 0.8mm), and a pointer. The NeoRuler can be used in normal or performance mode and can be enhanced with the MEAZOR APP 2.0.

Product Usage Instructions

Selecting the Scale Mode: Before using the NeoRuler, select the default scale mode by accessing the setting menu. Switch between scale modes as needed.

Calibrating the Device: Use the calibration function to ensure accurate measurements.

Using the Device: To use the device, measure the graphic length of the object you wish to measure. The principle of customized scale is to measure a section of graphic length corresponding to its actual distance. Input the actual distance and the calculated scale will be displayed on the screen. Use the divider function to divide a certain distance into 2-12 sections.

Charging the Device: Charge the device using the USB-C charging port and wait for the charging light to turn off before using the device.

Using the MEAZOR APP 2.0: Download the MEAZOR APP from the Apple APP Store or Google Play Store to enhance your experience with NeoRuler. Features include data transfer, list mode, drawing, and much more!

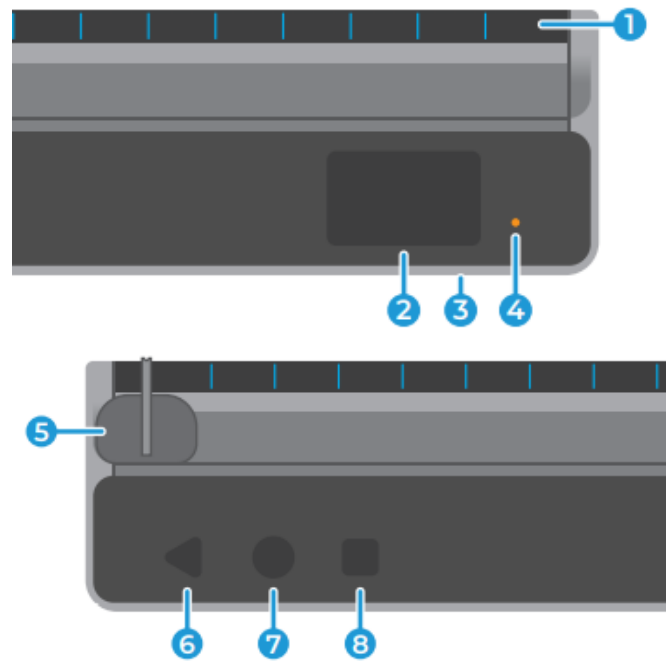
Warranty Information: The NeoRuler comes with a one-year limited consumer warranty that covers your product against manufacturing defects for one year from the date you bought your product. To send the product for repair, please contact the distributor and provide a valid device number with proof of purchase.

Contact Information: For further assistance, access detailed multilingual instruction manuals, FAQ & Instruction video in English, Chinese, Japanese, German, Spanish, Italian, or French or email support@hozodesign.com.

QUICKSTART GUIDE

Model : N01 | Ver:1.3

Basic



1. LED Marks
2. Screen
3. USB-C Charging Port
4. Charging Light
5. NeoPointer
6. Back / ON-OFF
7. Select Button
8. Switch Button

Start to use



NeoRuler has 93 built-in scales distributed in 8 scale modes. Select the default scale mode before use, and switch it in the setting menu.

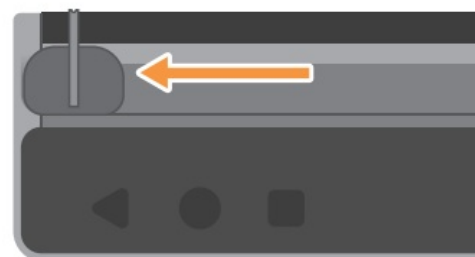
41 Built-in Metric Scales			
Arch	ENG I	ENG II	MAP
$\sqrt{1}$			
$\sqrt{2}$	$\sqrt{125}$	$\sqrt{1000}$	$\sqrt{100k}$
$\sqrt{3}$	$\sqrt{150}$	$\sqrt{1250}$	$\sqrt{125k}$
$\sqrt{4}$	$\sqrt{200}$	$\sqrt{1500}$	$\sqrt{200k}$
$\sqrt{5}$	$\sqrt{250}$	$\sqrt{1625}$	$\sqrt{250k}$
$\sqrt{10}$	$\sqrt{300}$	$\sqrt{2000}$	$\sqrt{500k}$
$\sqrt{20}$	$\sqrt{400}$	$\sqrt{2500}$	$\sqrt{1000k}$
$\sqrt{25}$	$\sqrt{500}$	$\sqrt{5000}$	$\sqrt{2000k}$
$\sqrt{30}$		$\sqrt{6000}$	$\sqrt{2500k}$
$\sqrt{40}$		$\sqrt{10k}$	
$\sqrt{50}$		$\sqrt{12.5k}$	
$\sqrt{72}$		$\sqrt{20k}$	
$\sqrt{75}$		$\sqrt{25k}$	
$\sqrt{100}$		$\sqrt{50k}$	

52 Built-in US Standard Scales			
Arch	ENG I	ENG II	MAP
$T = T$			
$6'' = T$	$T' = 10'$	$T' = 300'$	$T' = 1\text{Mi}$
$4'' = T$	$T' = 20'$	$T' = 333'$	$T' = 15\text{Mi}$
$3'' = T$	$T' = 30'$	$T' = 416.6'$	$T' = 2\text{Mi}$
$2'' = T$	$T' = 40'$	$T' = 500'$	$T' = 3\text{Mi}$
$1\frac{1}{2}'' = T$	$T' = 50'$	$T' = 583.3'$	$T' = 4\text{Mi}$
$T' = T$	$T' = 60'$	$T' = 600'$	$T' = 5\text{Mi}$
$3/4'' = T$	$T' = 70'$	$T' = 625'$	$T' = 6\text{Mi}$
$1/2'' = T$	$T' = 80'$	$T' = 666'$	$T' = 10\text{Mi}$
$3/8'' = T$	$T' = 83.3'$	$T' = 750'$	$T' = 20\text{Mi}$
$1/4'' = T$	$T' = 90'$	$T' = 1000'$	$T' = 24\text{Mi}$
$3/16'' = T$	$T' = 100'$	$T' = 1200'$	$T' = 25\text{Mi}$
$1/8'' = T$	$T' = 166.6'$	$T' = 2000'$	
$3/32'' = T$	$T' = 200'$	$T' = 3000'$	
$1/16'' = T$	$T' = 250'$		

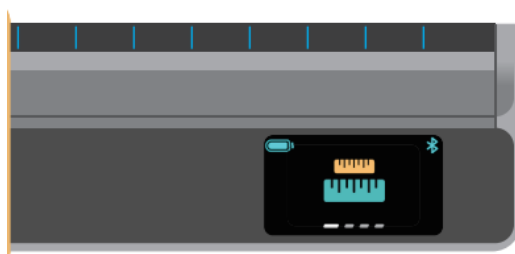
Calibration



When the calibration notification shows up, move the NeoPointer to the left for calibration. When finished, click any button to return.

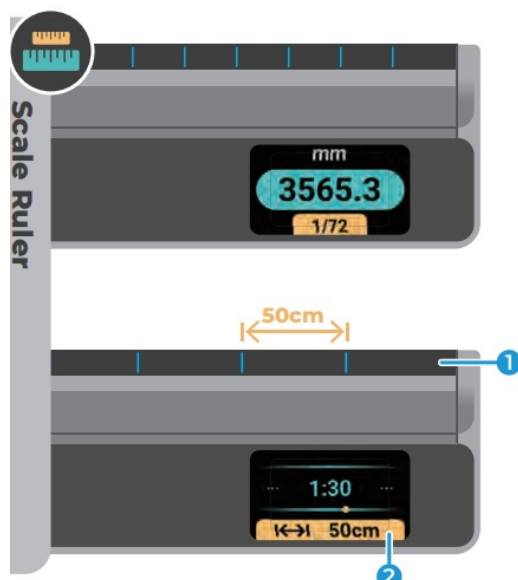


Main menu



- ◀ 2 sec > ON/OFF
- Select
- Switch Function
- ⌚ 5 min > Sleep, 2 hr > OFF
- ⚡ 1.5-2 hrs > 100%

Scale Ruler



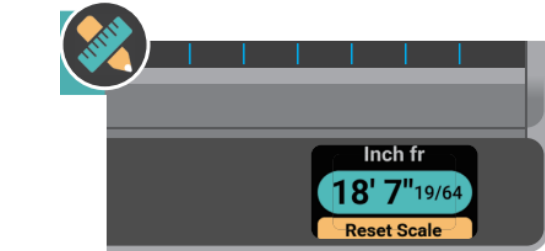
- ◀ *1 Back to zero / *2 Main Menu
- Bluetooth Send / Select Scale / Select Unit
- Switch (length / scales / unit)

Scale Setting

The spacing between the LED Mark (1) changes when changing the scale. The distance indicator (2) represents the actual scaled length between two marks.

- ◀ Back to measure
- Switch Scales

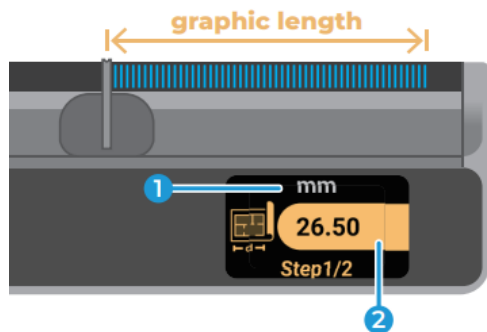
Customized Scale



◀ *1 Zero / *2 Main Menu

● Bluetooth Send / Reset Scale / Select Unit

■ Switch (length / scales / unit)



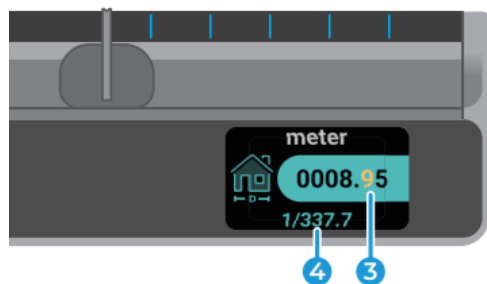
Step 1 | Measure Graphic Length

The principle of customized scale is to measure a section of graphic length corresponding to its actual distance

① Unit of Graphic Length ② Graphic Length

◀ Back to measure

■ Switch Section



Step 2 | Input Actual Distance

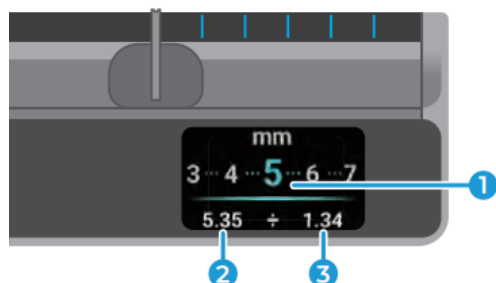
Use the pointer or press the ● button to increase the value of the actual length. Press the ■ button to switch between different digits and units.

③ Actual Distance

④ Calculated Scale

■ Switch digits/Sections ● Add value

Divider



Divider allows the user to divide a certain distance (slider's distance) into 2-12 sections.

① # of division

◀ Main Menu

② Total Length

● Change # of division

③ Section Length

■ Switch Section

Setting



Mode
(Normal/Caliper)



Battery
Normal/ Performance

* In performance mode, NeoRuler does not go into standby or power off



Scale
(8 Scale Modes)



Info

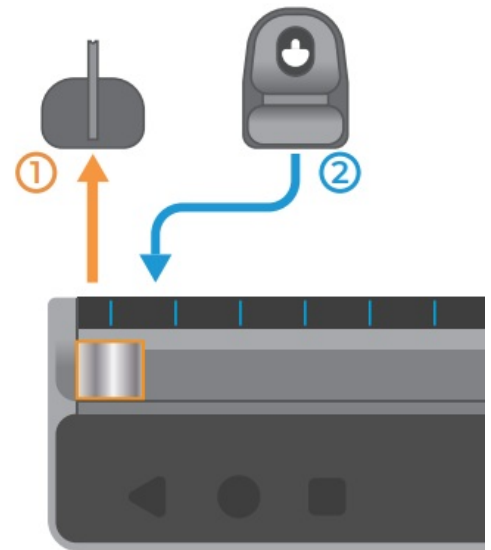
Accessories



NeoRuler's slider uses a modular snap design that allows you to easily replace the slider pointer or other functional accessories. For more information, please visit the HOZO DESIGN official website."

*The accessories shown on this page are not included and need to be purchased separately.

Place the NeoRuler flat on the desktop when replacing the module, and gently push the pointer forward. Then put the new accessory into the slot.



APP



MEAZOR APP 2.0

Free for Lifetime



Download MEAZOR APP to enhance your experience with NeoRuler, Include Data transfer, List mode, Drawing, and much more! Free for lifetime use and Available to download in Apple APP Store and Google Play Store.

WARRANTY

Special cases

The following cases are not covered by the warranty policy during the warranty period and will be repaired at extra cost.

1. Damage caused by improper use, maintenance, or storage by the user.
2. Dismantling of parts under unauthorized circumstances.
3. No proof of purchase.
4. The serial number does not correspond to the product sent for repair or has been altered
5. Damage to the body caused by force majeure
6. Normal wear and tear of the parts, which need to be replaced
7. Damage caused by abnormalities in the temperature/humidity of use or storage

8. Damage to the battery caused by not charging in accordance with the instructions
9. Any damage caused by not following the instructions.

Warranty period

HOZO Design. CO. - One-year Limited Consumer Warranty covers your product against manufacturing defects for one year from the date you bought your product.

How to send it for repair?

If the product needs to be repaired, please contact the distributor and send the product accordingly, and provide a valid **device number** with proof of purchase.



USER INSTRUCTIONS

Access to detailed multilingual instruction manuals, FAQ & Instruction video in: English | Chinese | Japanese | German | Spanish | Italian | French



- a) Download MEAZOR APP to view
- b) Scan the QR code with web browser to view online

Contact US

Online form: www.hozodesign.com/contact

Support Email: support@hozodesign.com

Copyright

The above product specifications are subject to change without notice. All rights of interpretation are reserved by HOZO DESIGN co. All trademarks, images, technical data, and intellectual property rights are the properties of HOZO DESIGN CO., Limited and are subject to copyright infringement.



FCC warning

This device should be installed and operated with minimum distance 10cm between the radiator&your body.
This device complies with part 15 of the FCC Rules. Operation is subject to the following two conditions:

1. This device may not cause harmful interference, and
2. This device must accept any interference received, including interference that may cause undesired operation.

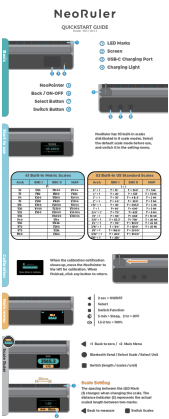
Changes or modifications not expressly approved by the party responsible for compliance could void the user's authority to operate the equipment. This equipment has been tested and found to comply with the limits for a Class B digital device, pursuant to part 15 of the FCC Rules. These limits are designed to provide reasonable

protection against harmful interference in a residential installation. This equipment generates, uses and can radiate radio frequency energy and, if not installed and used in accordance with the instructions, may cause harmful interference to radio communications. However, there is no guarantee that interference will not occur in a particular installation. If this equipment does cause harmful interference to radio or television reception, which can be determined by turning the equipment off and on, the user is encouraged to try to correct the interference by one or more of the following measures:

- Reorient or relocate the receiving antenna.
- Increase the separation between the equipment and receiver.
- Connect the equipment into an outlet on a circuit different from that to which the receiver is connected.
- Consult the dealer or an experienced radio/TV technician for help.

This equipment complies with FCC radiation exposure limits set forth for an uncontrolled environment. This equipment should be installed and operated with minimum distance 0cm between the radiator and your body

Documents / Resources



The thumbnail shows the cover of the NeoRuler N01 Metric Scale User Guide. It features the product name 'NeoRuler' at the top, followed by 'QUICKSTART GUIDE'. Below this, there are several images of the device in different states: a top-down view, a side view, and a close-up of the display. A table of contents is visible on the right side of the thumbnail, listing sections like 'Getting Started', 'Using the Device', and 'Troubleshooting'.

[Neo Ruler NeoRuler N01 Metric Scale \[pdf\] User Guide](#)
N01, NeoRuler N01, NeoRuler N01 Metric Scale, Metric Scale, Scale

References

-  [Support Center – HOZO Design](#)