

Neo-Pure

Neo-Pure Q Series Filter
Kit



Neo-Pure Q Series Filter Kit Installation Guide

[Home](#) » [neo PUnE](#) » Neo-Pure Q Series Filter Kit Installation Guide 

Contents

- 1 Neo-Pure Q Series Filter Kit
- 2 Product Information
- 3 Product Usage Instructions
- 4 Inspect Kit Parts
- 5 Verify Under-sink Location
- 6 Mount Filter Head Under Sink
- 7 Feed Supply Valve Installation
- 8 Install and Flush Filter Cartridge*
- 9 Documents / Resources
 - 9.1 References
- 10 Related Posts

Neo-Pure

Neo-Pure Q Series Filter Kit



Product Information

Specifications

- Reductions: chlorine, tastes and odors, cysts, lead
- Compact and easy to maintain system
- Can be installed under most sink cabinets
- Includes mounting bracket, valved head, cartridge, screws, angle stop adapter, tubing

Product Usage Instructions

Inspect Kit Parts

Inspect and familiarize yourself with all the components included in the kit.

Verify Under-sink Location

Measure 15 inches from the base of the cabinet and mark the mounting location for the filter head. Ensure there is enough space to avoid crimping the water line tubing and for future cartridge changes.

Mount Filter Head Under Sink

A. Identify the inlet and outlet ports of the filter head. Mount the head to the bracket and then attach the bracket to the cabinet wall.

FAQ:

Q: Can I use this filter kit with any type of faucet?

A: The kit does not include a faucet; you need to install a separate faucet for filtered water following the manufacturer's instructions.

Neo-Pure Q Series Filter Kit Installation Guide

The Neo-Pure Q Series filter kit is a compact and easy to maintain system providing reductions of chlorine, tastes and odors, cysts, and lead. The small compact profile makes it easy to install under most any sink cabinet

including the kitchen and bathrooms.

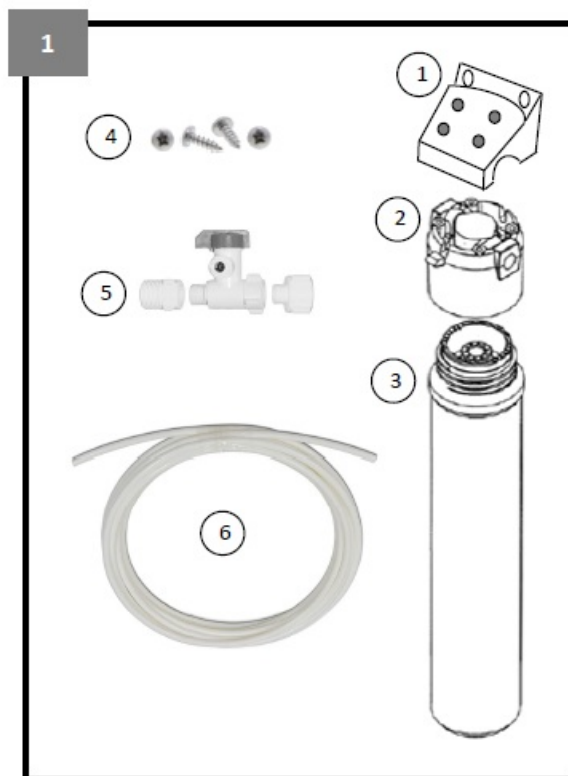
Tools Needed for Installation:

- #2 Phillips Screw Driver
- Wrench
- Pencil
- Utility Knife
- Measuring Tape

Inspect Kit Parts

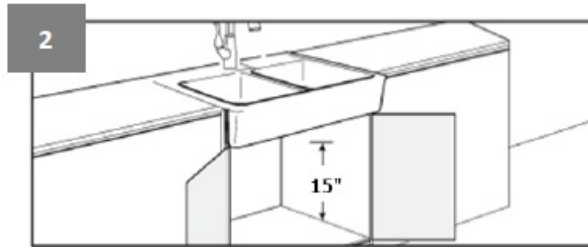
Key Description

1. Mounting Bracket
2. Valved head 1/4" QC
3. Neo-Pure Q Series CTO/Cyst/Lead reduction Cartridge
4. #8 x 1/2 panhead screws
5. Angle Stop Adapter 3/8 comp x 1/4 tube
6. 5' LLDPE White 1/4" OD Tubing



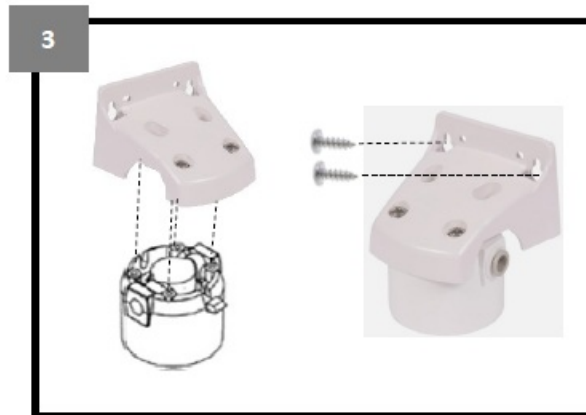
Verify Under-sink Location

Measure 15" from the base of the cabinet, and mark the mounting location for the top of the filter head. Make sure there is adequate space to avoid crimping the water line tubing. Also, make sure your chosen location offers easy access for future cartridge changes.



Mount Filter Head Under Sink

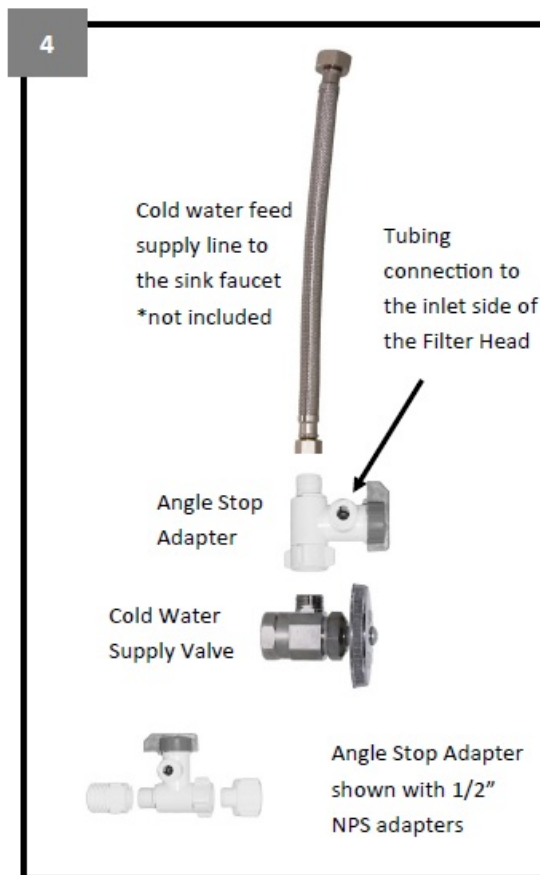
- Identify Filter Head and the inlet and outlet ports. The head can be mounted on the bracket in either direction so make sure the inlet and outlet ports are located to coincide with the flow path from water supply to faucet.
- Mount the head to the mounting bracket. Then mount the bracket to cabinet wall. (screws not included)



Feed Supply Valve Installation

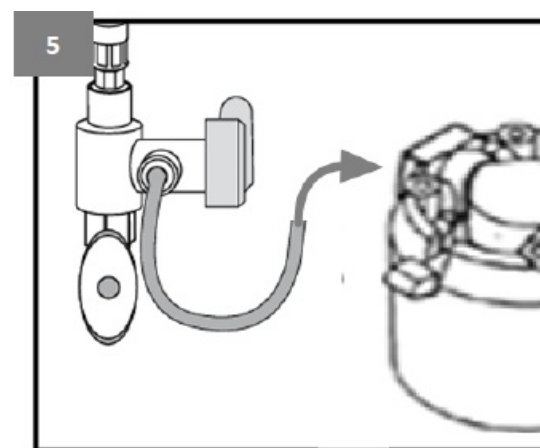
Note: This adaptor is designed to fit 3/8" compression supply threads and has adapters for 1/2" NPS connections. It connects to 1/4" OD tubing to feed the QL3 filter head inlet port.

- Locate the cold water supply valve (shut-off) under the sink. Turn off the cold water supply.
- Turn on the kitchen faucet. This will release pressure and allow water to completely drain from the line.
- Disconnect the cold water feed supply line from the top of the cold water supply valve. (Angle stop valve)
- Holding the Angle Stop Valve Adapter in an upright position, thread the female side of the faucet adapter on to the cold water supply valve.
- Attach the cold water supply line for the faucet to the male -top side of the adapter.
- Occasionally, The adapter will have to be located at the base of the base of the cold water side of the sink faucet and the reason for the 1/2" NPS adapters.



Attach Feed Water Line to Filter Head

- Measure length of tubing needed to connect Angle Stop Adapter to Inlet Fitting on Filter Head. Allow adequate tubing to avoid sharp turns.
- Cut tubing at a 90° angle using a sharp knife.
- Insert ends of tubing into quick-connect fittings. Make sure 'IN' side connects to the tube from the angle stop adapter. Push tubes into fittings and gently pull to confirm a tight fit.



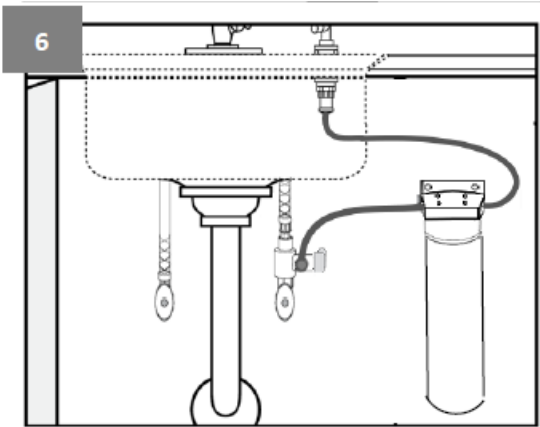
Attach Filtered Water to Dedicated Faucet*

Faucet not included with this kit

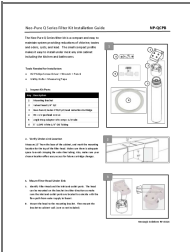
- Install separate faucet for filtered drinking water. Follow individual manufacturer's instructions.
- Measure length of tubing needed to connect the outlet fitting on the Filter Head to the faucet connector fitting. Allow adequate tubing to avoid sharp turns. Cut and insert each end of the tubing into the fittings.

Install and Flush Filter Cartridge*

Once tube connections are made, open feed supply valve and check for leaks. Open faucet handle and flush the cartridge for 3-5 minutes minimum. Follow cartridge specific flushing instructions before using.



Documents / Resources

	Neo-Pure Q Series Filter Kit [pdf] Installation Guide Q Series Filter Kit, Q Series, Filter Kit, Kit
--	---

References

- [User Manual](#)

[Manuals+](#), [Privacy Policy](#)

This website is an independent publication and is neither affiliated with nor endorsed by any of the trademark owners. The "Bluetooth®" word mark and logos are registered trademarks owned by Bluetooth SIG, Inc. The "Wi-Fi®" word mark and logos are registered trademarks owned by the Wi-Fi Alliance. Any use of these marks on this website does not imply any affiliation with or endorsement.