

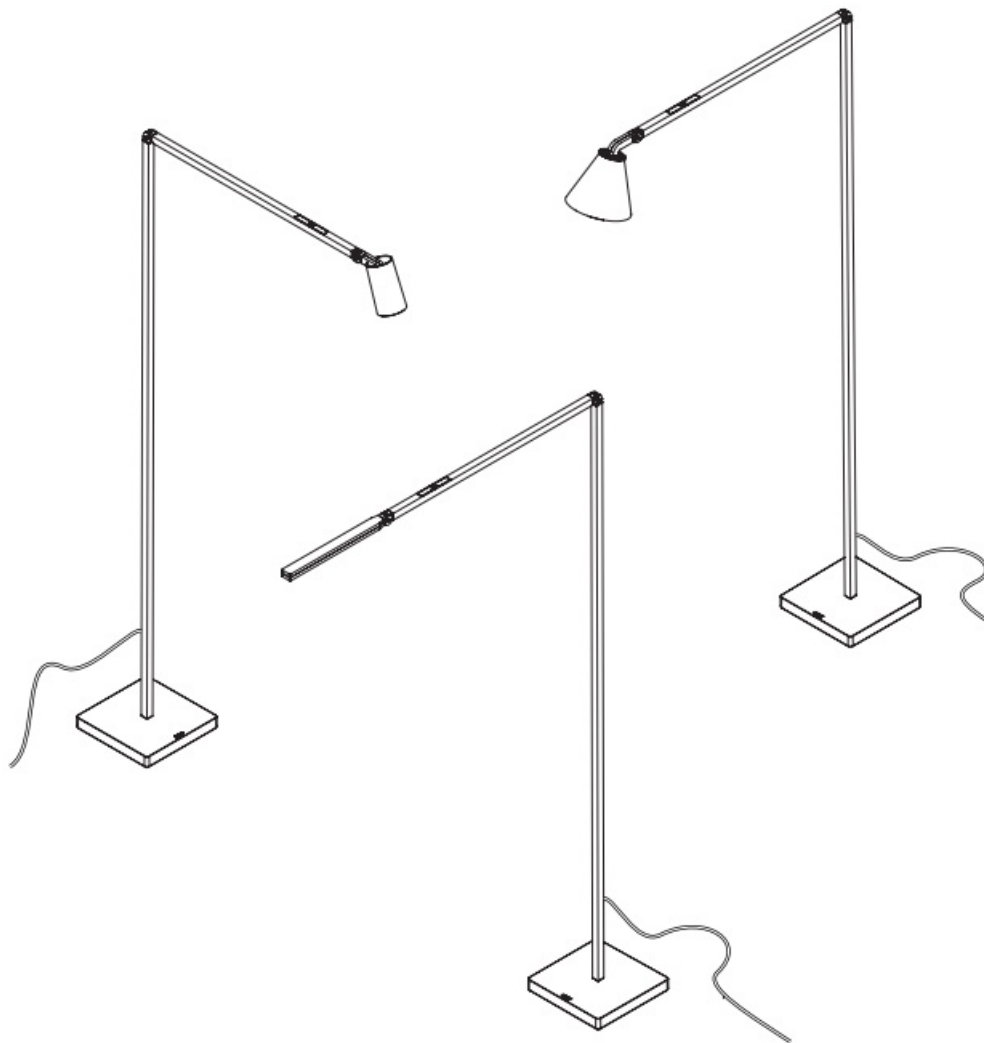


## NEMO Untitled Reading LED Floor Lamp Instruction Manual

[Home](#) » [NEMO](#) » NEMO Untitled Reading LED Floor Lamp Instruction Manual 

# NEMO

Assembly instructions

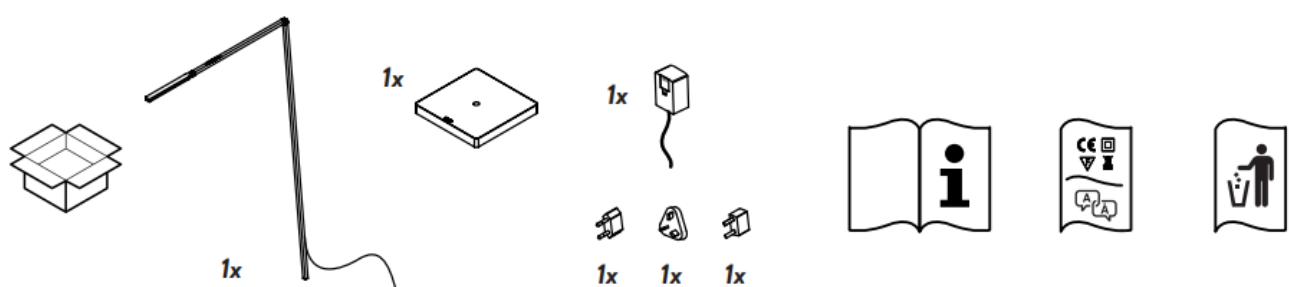


**Bernhard Osann**  
**UNTITLED reading**  
**CODE**  
**072UNT000320**  
**07/07/2022**

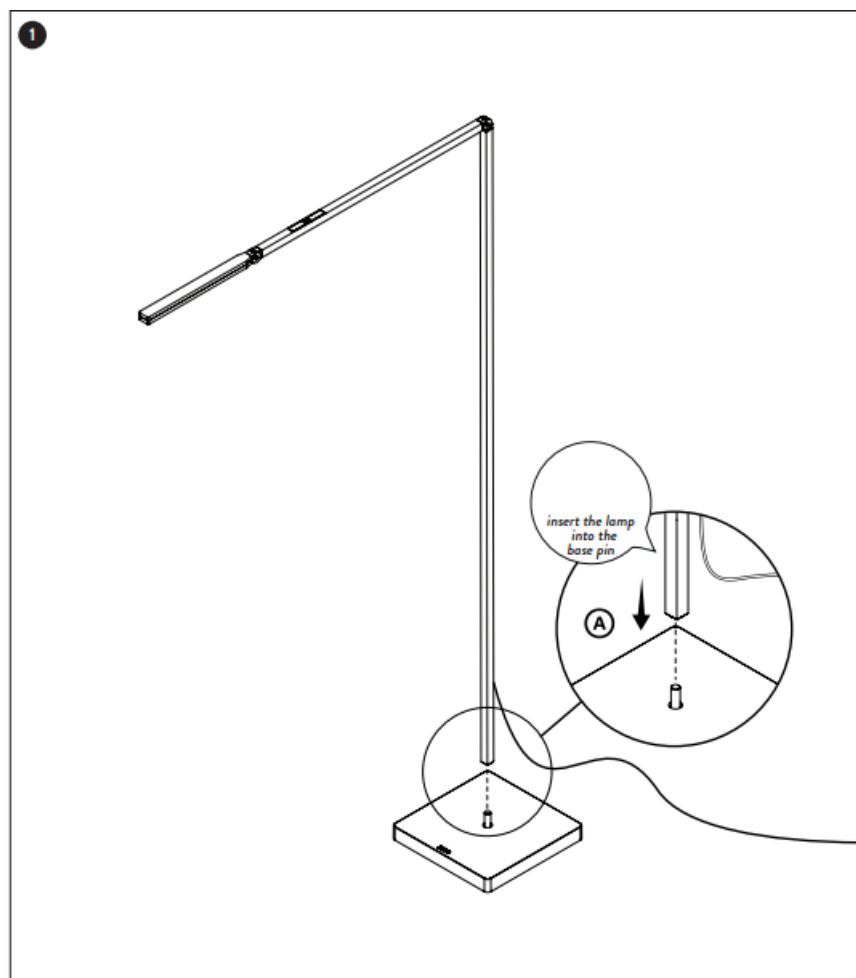
## Contents

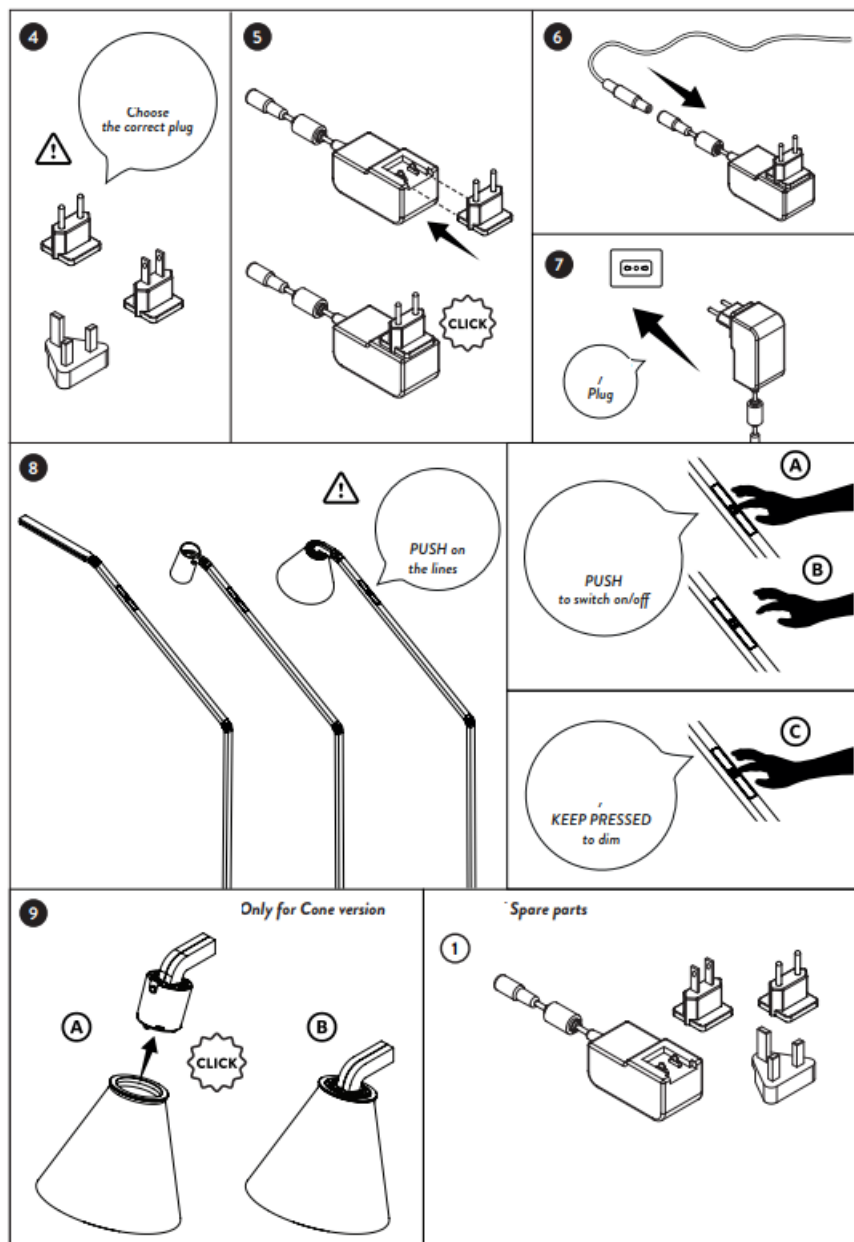
- [1 Box contents](#)
- [2 Installation](#)
- [3 Lamping](#)
- [4 Documents / Resources](#)
  - [4.1 References](#)
- [5 Related Posts](#)

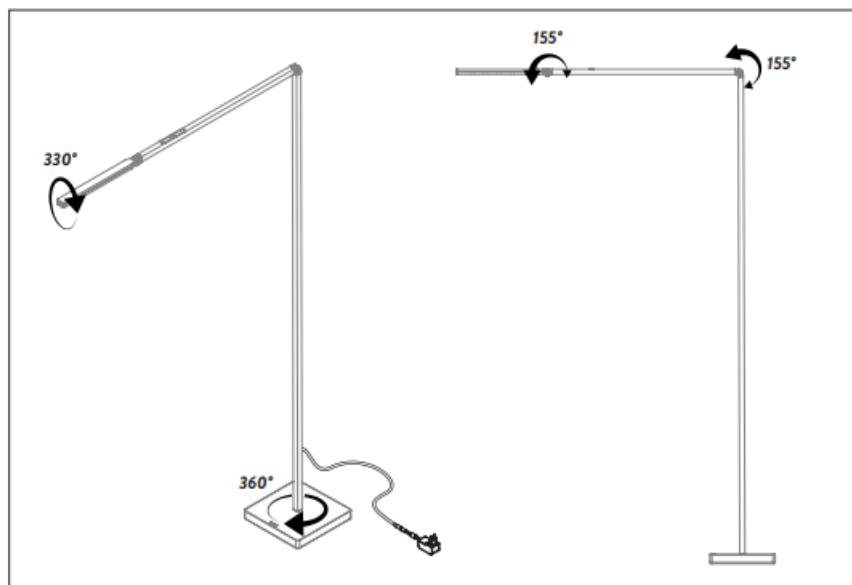
## Box contents



## Installation

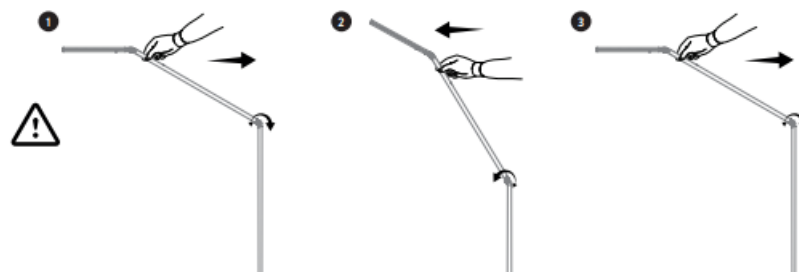






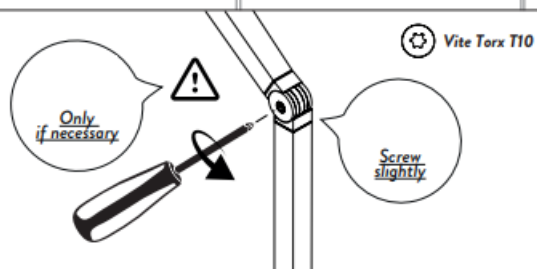
**Warning**

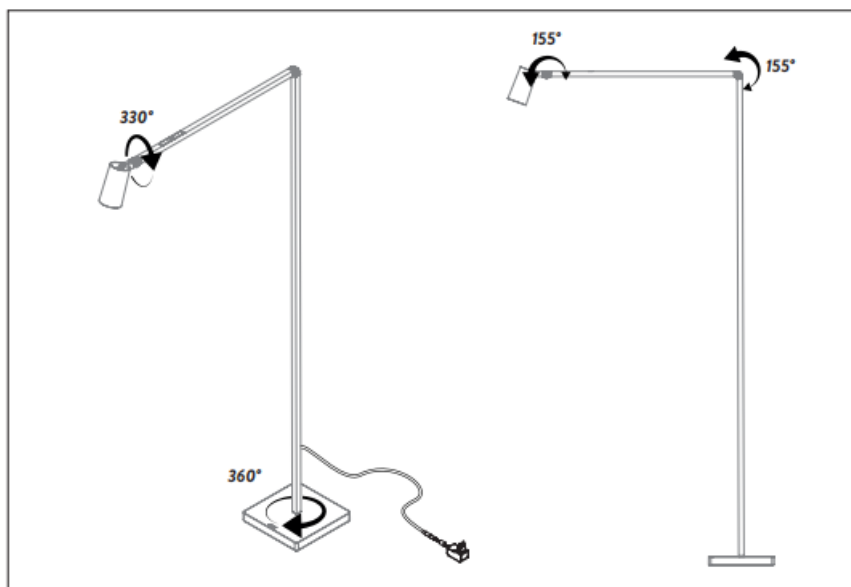
- (A)** At first use, if the junctions feels loose, move the arms 10 times to set up back the junctions



- (B)** All junctions are calibrated

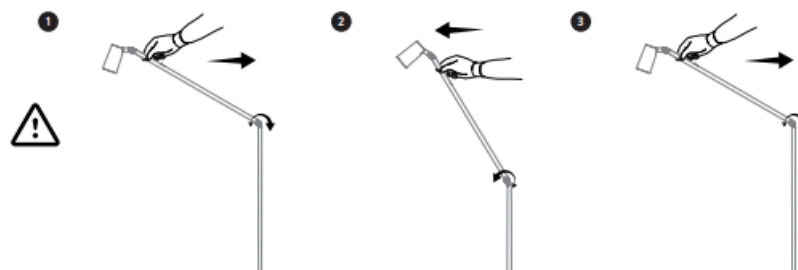
If the junctions loosen, can screw it slightly. Excessively screwing can break the junction

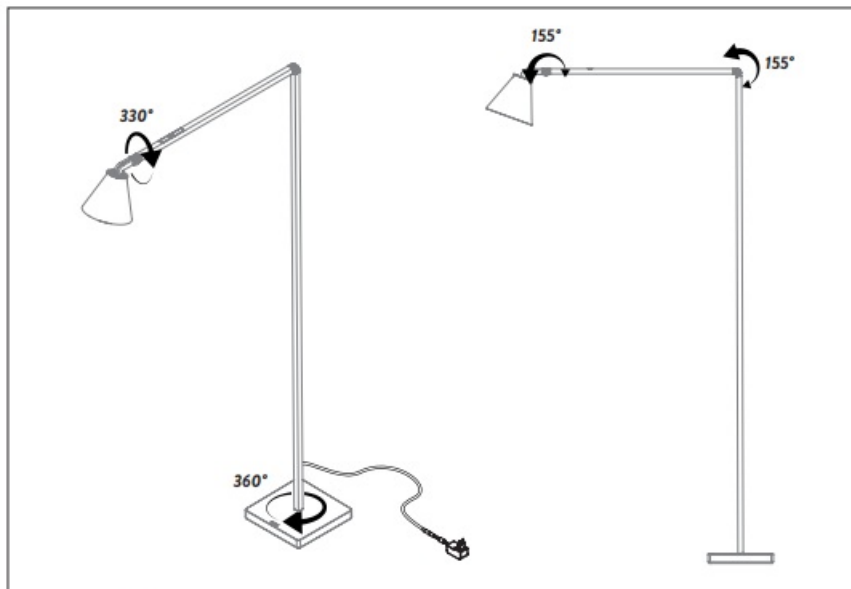




### Warning

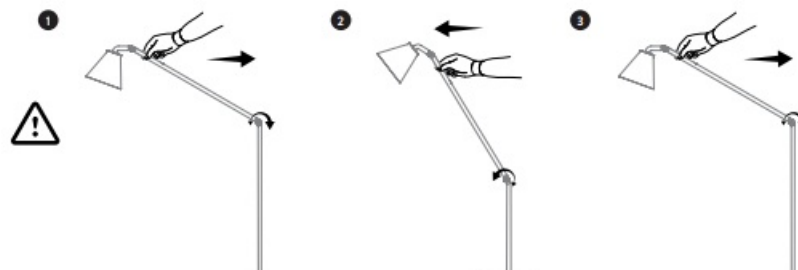
- (A)** At first use, if the junctions feels loose, move the arms 10 times to set up back the junctions

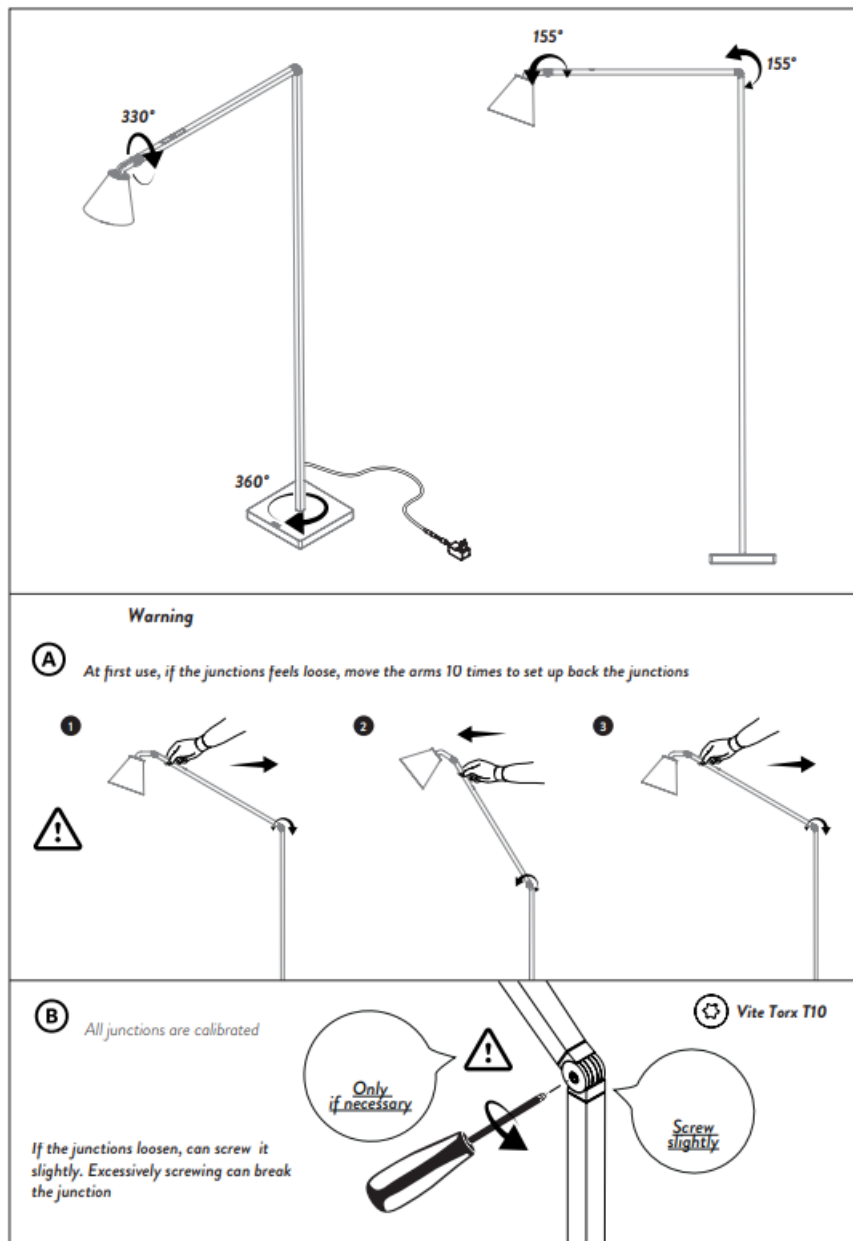




**Warning**

- (A)** At first use, if the junctions feels loose, move the arms 10 times to set up back the junctions





## CAUTION



Symbols and guarantee of the fixture are described in the enclosed sheet. / Disconnect power before proceeding with the installation of the fixture. / In the absence of the IP symbol, fixture is only for indoor installation. / Use only bulbs of suitable type and power specified in the label. / Safety is guaranteed only if installation is carried out by a qualified electrician. / Products with anodized finishes could show different color shades due to the industrial galvanic process. Shades have to be considered as aesthetic elements of the product. / Polishing process is hand-made. Shades are therefore due to this manual process. / Dimensions of products made with deformations of extrusions could be subject to changes of  $\pm 1\text{cm}$ . / As blown glass is produced by traditional craft techniques, its thickness, color and finish are subject to variation, a feature that makes each piece unique. / Do not install fixture in ambiances with presence of chlorine, salt air or aggressive agents, if not expressly mentioned. / The color temperature (CCT) of LED sources can be different from the declared nominal value between a range of  $\pm 5\%$ . / NEMO reserves the right to make any technical or formal alterations to its products without giving prior notice, especially for LED sources. / We recommend you to keep instructions for further consultations.



This lamp has been manufactured in conformity with EU Directive 2002/96/EC. The crossed-out wheeled bin symbol marked on the appliance means that it was put on the market after 13th August 2005 and that it must therefore be disposed of separately from household waste. Separate disposal of this product prevents any negative effects to public health and the environment deriving from unsuitable disposal and allows the materials it



is made of to be recovered to achieve considerable savings of power and resources. The end user is responsible for delivering the appliance, at the end of its working life, to a suitable collection facility. Failure to do so will be punished according to the current national legislation. For detailed information on collection systems and methods, please contact the relative office in your town, the local waste disposal service or the shop where you purchased the product.

## Lamping

### LINEAR

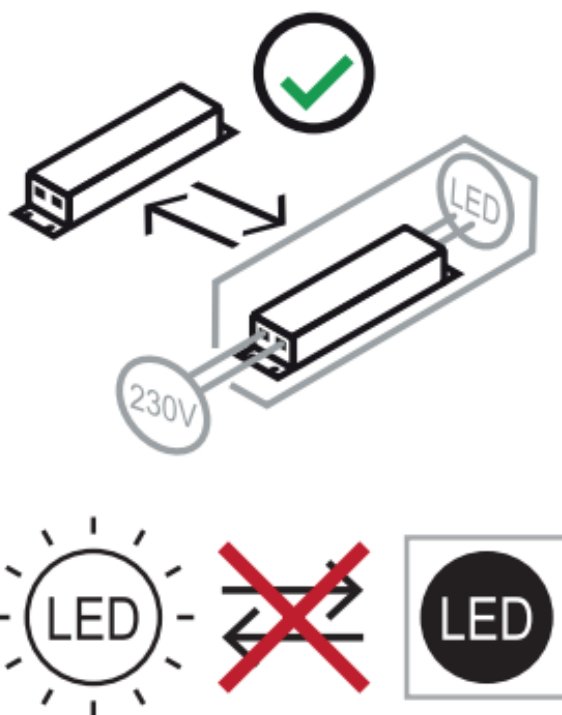
LED, 7W, 483 lm, 110-240V, 2700K , 50/60Hz dimmable (on board)

LED, 7W, 483 lm, 110-240V, 3000K , 50/60Hz dimmable (on board)

Questo prodotto contiene una sorgente luminosa in classe "E"

This product contains a light source of energy class "E"

### SPOT/CONE

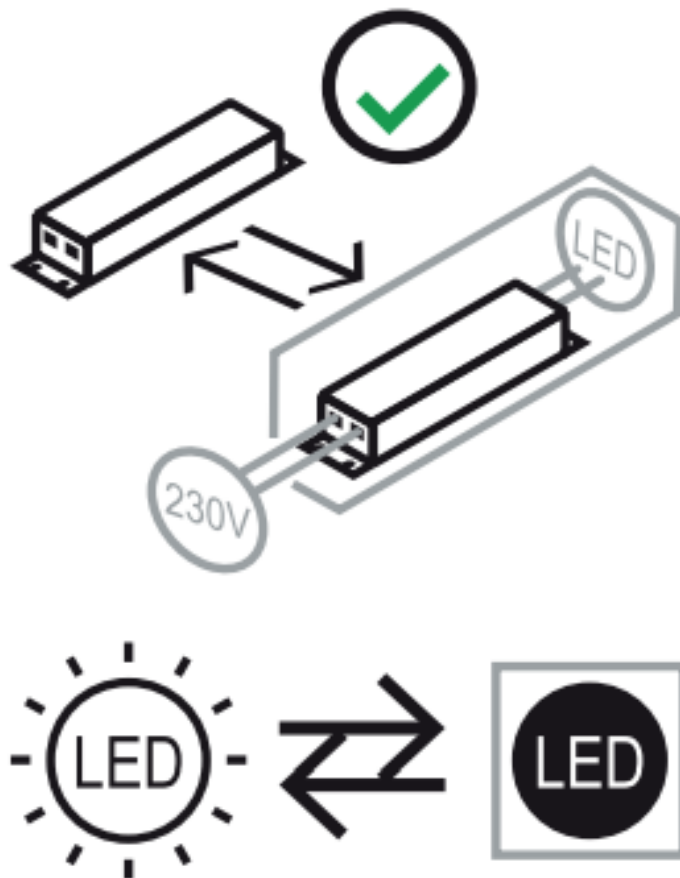


LED, 5W, 395 lm, 110-240V, 2700K , 50/60Hz dimmable (on board)

LED, 5W, 395 lm, 110-240V, 3000K , 50/60Hz dimmable (on board)

Questo prodotto contiene una sorgente luminosa in classe "G"

This product contains a light source of energy class "G"



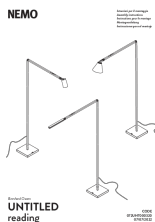
## INSTRUCTIONS FOR LAMP CLEANING



To clean the lamp, use only a soft cloth.

Copyright © 2022 NEMO Srl Milano, Italia.  
The text and images are protected by copyright.  
Unauthorized reproduction.

## Documents / Resources

 <p>NEMO</p> <p>UNTITLED reading</p>	<p><a href="#">NEMO Untitled Reading LED Floor Lamp</a> [pdf] Instruction Manual Untitled Reading LED Floor Lamp, Untitled, Reading LED Floor Lamp, LED Floor Lamp, Floor L amp, Lamp</p>
---	---

## References

- [NEMO LIGHTING USA](#)